

Kingsmen (Thames) Inc. / Havelock Corners (Kingsmen)

Lot/Unit: 81 Phase/Building: 4A Model/Floor Plan: Arthur (4205) Elev C 4 Bed - 4+1 Bath

CABINETRY

Inv.4640	1 - This is to accomodate for the upgraded hood fan in the kitchen... see spec's	
Line 59409	Note:	
13May20 / 29May20		

CABINETRY APPLIANCE - FRIDGE

Inv.4640	1 - To supply & install the 66CM DEEP FRIDGE ENCLOSURE - COUNTER DEPTH WITH NO WALLS - 2 66CM DEEP GABLES AND 1 66CM DEEP CABINET with the flip up door - THIS IS NOT A ZERO CLEARANCE ENCLOSURE. STANDARD HEIGHTS AND WIDTHS WILL BE USED. - CLASSIC SERIES..	
Line 59446	Note: See fridge spec's attached.	
13May20 / 29May20		

CABINETRY BASE CABINETS

Inv.4640	1 - To supply & install a BASE PIE CUT CORNER - CLASSIC SERIES in the kitchen... see sketch # 1	
Line 59441	Note:	
13May20 / 29May20		

CABINETRY HOOD FANS

Inv.4640	1 - To supply & install the HOOD FAN - PRO COLLECTION (NA330R30) UNDERMOUNT RANGE HOOD WITH 680 CFM FAN - 30 INCH - DIGITAL CONTROL in lieu of the standard hood fan in the kitchen...see spec's	
Line 59408	Note:	
13May20 / 29May20		

CABINETRY MICROWAVE OVEN STOVE COOKTOP

Inv.4640	1 - To supply & install a BASE CABINET FOR UNDER-COUNTER MICROWAVE - SMALL APPLIANCE WITH TRIM KIT WITH DRAWER BELOW - SUPPLY SPECS - CLASSIC SERIES to the kitchen island... see sketch # 1	
Line 59442	Note: Elec. outlet for this upgrade is sold sep. and is mandatory to be sold for this upgrade.	
13May20 / 29May20		

CABINETRY PANTRY

Inv.4640	3 - To supply & instal a 34" wide (2 door wide) PANTRY 30 CM DEEP - CLASSIC SERIES in the kitchen /breakfast area... see sketch # 1	
Line 59449	Note:	
13May20 / 29May20		

CABINETRY VANITY

Inv.4640	1 - To INCREASE VANITY TO KITCHEN HEIGHT - 90CM HIGH - MAINTAINS VANITY DEPTH - CLASSIC SERIES in the powder room.	
Line 59439	Note:	
13May20 / 29May20		

CABINETRY WALL AND HUTCH

Kingsmen (Thames) Inc. / Havelock Corners (Kingsmen)

Lot/Unit: 81 Phase/Building: 4A Model/Floor Plan: Arthur (4205) Elev C 4 Bed - 4+1 Bath

Inv.4640	1 - To supply & install an UPPER ANGLE CORNER PER UNIT - CLASSIC SERIES in the kitchen... see sketch # 1	
Line 59440	Note:	
13May20 / 29May20		

COUNTER TOP - EXTRAS

Inv.4640	4 - To supply & install A shower niche in the master ensuite & bedroom #2's, #3's and #4's bathroom's... see sketch # 2	
Line 59433	Note: The colour of the niches will be selected at the time of the interior finishing appointments.	
13May20 / 29May20		

ELECTRICAL

Inv.4640	1 - To SUPPLY AND INSTALL MICROWAVE PLUG (DEDICATED CIRCUIT AND INCLUDES ARC FAULT BREAKER) for the future under counter microwave at the island.	
Line 59444	Note:	
13May20 / 29May20		
Inv.4640	1 - To supply & install the standard T.V. rough in in the great room and master bedroom... see sketch # 1 & # 2	
Line 59414	Note:	
13May20 / 29May20		
Inv.4640	1 - To supply & install the standard Phone rough in in the great room, master bedroom and computer niche area... see sketch # 1 & # 2	
Line 59415	Note:	
13May20 / 29May20		
Inv.4640	1 - To supply & install a RG6 CABLE rough in in bedroom # 3...see sketch # 2	
Line 59416	Note:	
13May20 / 29May20		
Inv.4640	1 - To supply & install a TELEPHONE rough in in bedroom #3's bedroom... see sketch # 2	
Line 59417	Note:	
13May20 / 29May20		
Inv.4640	1 - Relocate the standard ceiling light in the kitchen over to the breakfast bar area... see sketch # 1	
Line 59418	Note: Still connected to the standard switch.	
13May20 / 29May20		
Inv.4640	1 - To supply & install ONE LED pot light in the kitchen... see sketch # 1	
Line 59419	Note: This pot light will be connected to a sep. switch, switch is sold sep.	
13May20 / 29May20		
Inv.4640	1 - To supply & install AN ADDITIONAL SINGLE POLE SWITCH connected to the upgraded one pot light in the kitchen area... see sketch # 1	
Line 59420	Note:	
13May20 / 29May20		
Inv.4640	1 - To supply & install ONE LED pot light in the breakfast area... see sketch # 1	
Line 59421	Note: This pot light will be connected to a sep. switch, switch is sold sep.	
13May20 / 29May20	STILL TO INSTALL THE STD. LIGHT IN THE BREAKFAST AREA.	

Kingsmen (Thames) Inc. / Havelock Corners (Kingsmen)

Lot/Unit: 81 Phase/Building: 4A Model/Floor Plan: Arthur (4205) Elev C 4 Bed - 4+1 Bath

Inv.4640	1 - To supply & install AN ADDITIONAL SINGLE POLE SWITCH connected to the one upgraded pot light in the breakfast area.	
Line 59422	Note:	
13May20 / 29May20		
Inv.4640	1 - To supply & install ONE LED pot light in the great room area... see sketch # 1	
Line 59423	Note: This pot light will be connected to a sep. switch, switch is sold sep.	
13May20 / 29May20 STILL TO INSTALL THE STD. LIGHT IN THE GREAT ROOM AREA.		
Inv.4640	1 - To supply & install AN ADDITIONAL SINGLE POLE SWITCH connected to the upgraded one pot light in the great room.	
Line 59424	Note:	
13May20 / 29May20		
Inv.4640	1 - To supply & install ONE LED pot light in the dining room area... see sketch # 1	
Line 59426	Note: This pot light will be connected to a sep. switch, switch is sold sep.	
13May20 / 29May20 STILL TO INSTALL THE STD. LIGHT IN THE DINING ROOM.		
Inv.4640	1 - To supply & install AN ADDITIONAL SINGLE POLE SWITCH connected to the one upgraded pot light in the dining room.	
Line 59427	Note:	
13May20 / 29May20		
Inv.4640	1 - To supply & install ONE LED pot light in the study area... see sketch # 1	
Line 59428	Note: This pot light will be connected to a sep. switch, switch is sold sep.	
13May20 / 29May20 STILL TO INSTALL THE STD. LIGHT IN THE STUDY AREA.		
Inv.4640	1 - To supply & install AN ADDITIONAL SINGLE POLE SWITCH connected to the upgraded pot light in the study area.	
Line 59429	Note:	
13May20 / 29May20		
Inv.4640	1 - To supply & install ONE LED pot light to the main floor hallway... see sketch # 1	
Line 59431	Note: Still to supply & install the standard lights to the main floor hallway, have this upgraded pot light connected to the standard light(s) and standard switch(s) that are applicable to the main floor hallway	
13May20 / 29May20		
Inv.4640	1 - To SUPPLY AND INSTALL REINFORCING FOR A CEILING light at the O.T.B. area on the second floor. ... see sketch # 2	
Line 59432	Note:	
13May20 / 29May20		
Inv.4640	1 - To SUPPLY AND INSTALL AN ADDITIONAL BASIC RECEPTACLE (NOT DEDICATED)at approx. 66 " + - up from the floor centered + - to the F/P mantle	
Line 59470	Note: in the great room... see sketch # 1	
13May20 / 29May20 This is for a future wall mount t.v.		
Inv.4640	1 - To SUPPLY AND INSTALL CONDUIT FOR TV OVER THE FIREPLACE – TERMINATED IN SAME ROOM installed at approx. 66 " + - up from the floor centered + - to the F/P mantle and terminated next to the std. T.V. and Phone rough in in the great room..see sketch # 1	
Line 59471	Note: This is for a future wall mount t.v.	
13May20 / 29May20		

FIREPLACE

Kingsmen (Thames) Inc. / Havelock Corners (Kingsmen)

Lot/Unit: 81 Phase/Building: 4A Model/Floor Plan: Arthur (4205) Elev C 4 Bed - 4+1 Bath

Inv.4640	1 - To supply an- ON AND OFF REMOTE in lieu of the standard switch on the wall for the 2 sided F/P between the great room and study area.	
Line 59434	Note:	
13May20 / 29May20		

HEATING AND AIR CONDITIONING

Inv.4640	1 - To supply & install the Humidifier to the furnace...	
Line 59402	Note:	
13May20 / 29May20		

MISCELLANEOUS

Inv.4640	1 - To supply & install the OPTIONAL COFFERED CEILING in the study area... see sketch # 1	
Line 59403	Note:	
13May20 / 29May20		

Inv.4640	1 - To supply & install the OPTIONAL COFFERED CEILING in the great room area... see sketch # 1	
Line 59404	Note:	
13May20 / 29May20		

Inv.4640	1 - To supply & install a gas capped rough in and the 110V elec. (code requirement) for a future gas stove in the kitchen...	
Line 59405	Note:	
13May20 / 29May20		

Inv.4640	1 - To supply & intall the COFFERED CEILING in the dining room as per plan... see sketch # 1	
Line 59683	Note:	
13May20 / 29May20		

PLUMBING

Inv.4640	1 - To supply & install a WATERLINE ROUGH-IN TO THE FRIDGE LOCATION (NO HOOK UP) in the kitchen...	
Line 59406	Note:	
13May20 / 29May20		

Inv.4640	1 - To supply & install the WATERLINE ROUGH-IN TO THE DRYER LOCATION (NO HOOK UP) in the laundry room..	
Line 59407	Note:	
13May20 / 29May20		

Inv.4640	1 - To supply & install the PLUMBING EXTRAS - SHOWER STALL (IN LIEU OF STANDARD 5 FOOT TUB) in bedroom #2's bathroom ... see sketch # 2	
Line 59410	Note: This includes a shower light.	
13May20 / 29May20 NO GLASS SHOWER PANEL OR DOOR HAS BEEN PURCHASED.		

Inv.4640	1 - To supply & install the PLUMBING EXTRAS - SHOWER STALL (IN LIEU OF STANDARD 5 FOOT TUB) in bedroom #4's bathroom ... see sketch # 2	
Line 59411	Note: This includes a shower light.	
13May20 / 29May20 NO GLASS SHOWER PANEL OR DOOR HAS BEEN PURCHASED.		



CONSTRUCTION SUMMARY

Kingsmen (Thames) Inc. / Havelock Corners (Kingsmen)

Lot/Unit: 81 Phase/Building: 4A Model/Floor Plan: Arthur (4205) Elev C 4 Bed - 4+1 Bath

EXTRAS AS PER OFFER

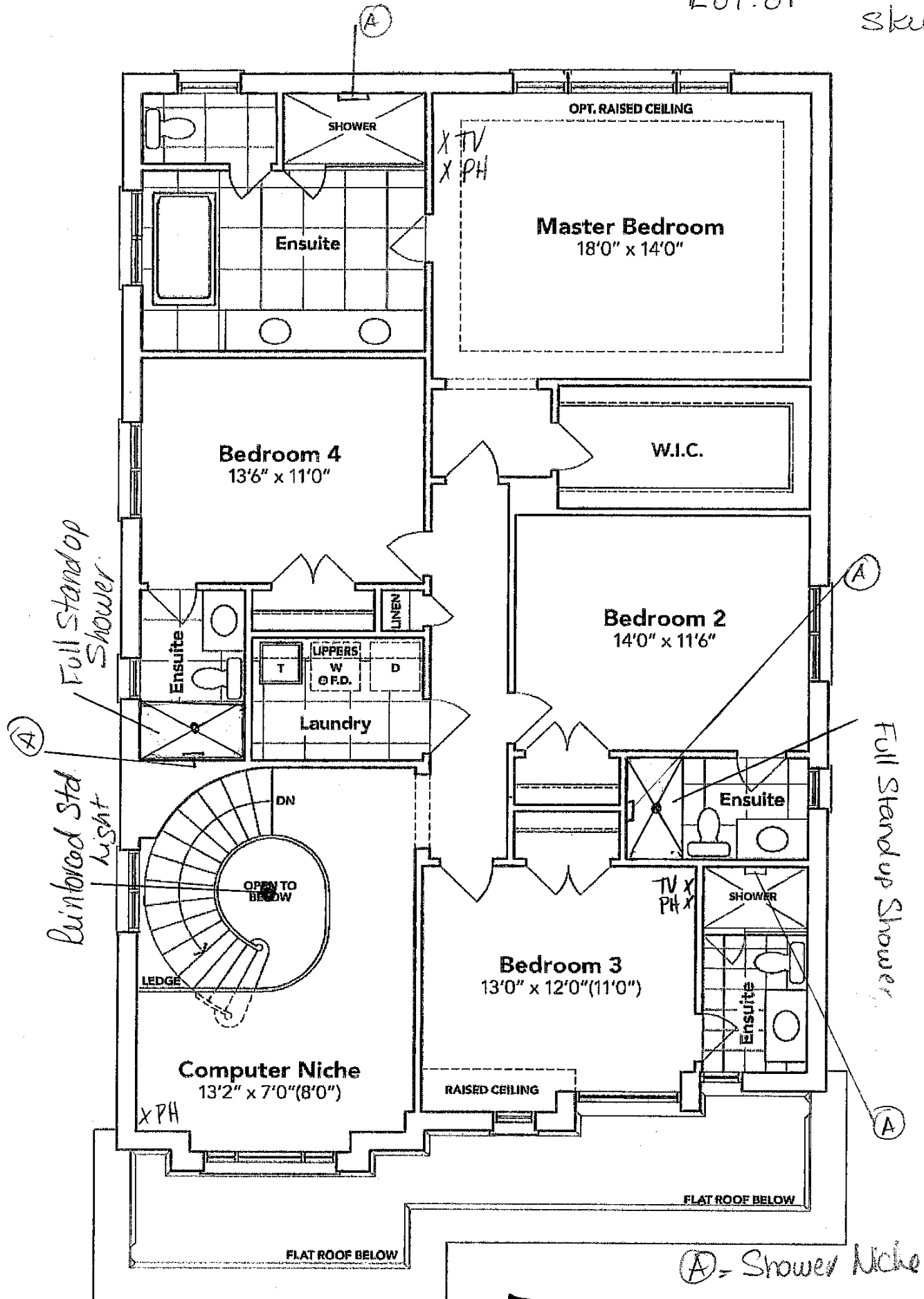
VENDOR TO INSTALL CAPPED GAS LINE (ROUGH-IN ONLY) AT REAR OF HOME FOR FUTURE BBQ LOCATION. LOCATION TO BE FINALIZED AT VENDORS SOLE DISCRETION. <i>Worksheet</i> Note:	
VENDOR TO SUPPLY & INSTALL AIR CONDITIONING UNIT, SIZED ACCORDINGLY, FROM VENDORS STANDARD SAMPLES. <i>Worksheet</i> Note:	

Floor Plan

Phase 4A
Model: Arthur (4205) Elev C 4 Bed - 4+1 Bath
Standard

LOT: 81

Sketch #2



SECOND FLOOR EL. C



SEE ATTACHED FOR SIGNATURES



SEE ATTACHED FOR SIGNATURES

The floor plans and elevations shown are pre-construction plans and may be revised or improved as necessitated by architectural controls and the construction process. The measurements adhere to the rules and regulations of the TARION Warranty Corporation's official method for the calculation of floor area. Materials, specifications and floor plans are subject to change without notice. All house renderings are artist's concept only. Actual usable floor space may vary from the stated floor area. All options shown are upgrades. E. & O. E.

(S)

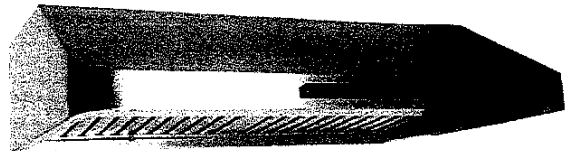
(PB)

LOT: 81 Thomas PH: 4A

RE: UPG. 30" Hood Fan for Kitchen

Specifications

Air Flow Volume: 680 CFM
Electrical Connection: 120V/60Hz
Power Consumption: 210 Watts
Current: 2.4 Amps
Fan Speed: 1550 RPM
Finishes: Stainless Steel
Duct: 6" Round
Knock-out: 3 1/4" x 10" Rectangular
(Top Only)
Dimensions: Width: 30"/36"
Height: 8"
Depth: 22"
Noise Level: Min. 2 Sones
Max. 7 Sones



Ordering Model Chart

Model	Colour	Knock-out	Duct	Size	Filter
NA330R30	Stainless Steel	3 1/4" x 10"	6" Round	30"	Baffle
NA330R36	Stainless Steel	3 1/4" x 10"	6" Round	36"	Baffle

Notes

Cyclone[®]

Lot: 81 Thames PH: 4A
Re: Fridge Spec's.



SEE ATTACHED FOR SIGNATURES
SEE ATTACHED FOR SIGNATURES

KitchenAid® French Door Bottom Mount Refrigerator

PRODUCT MODEL NUMBER:

KRFF507H

ELECTRICAL AND WATER REQUIREMENTS:

Electrical: A 115 volt, 60 Hz, AC only 15 or 20 A fused, grounded electrical supply is required. It is recommended that a separate circuit serving only your refrigerator and approved accessories be provided. Use an outlet that cannot be turned off by a switch. Do not use an extension cord.

Water: A cold water supply with water pressure between 35 and 120 psi (241 and 827 kPa) is required to operate the water dispenser and ice maker. If you have questions about your water pressure, call a licensed, qualified plumber.

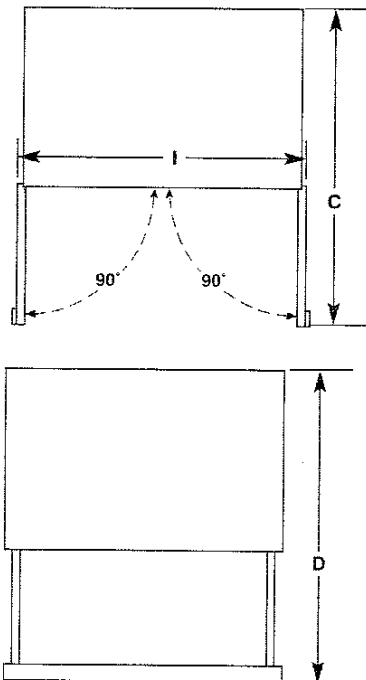
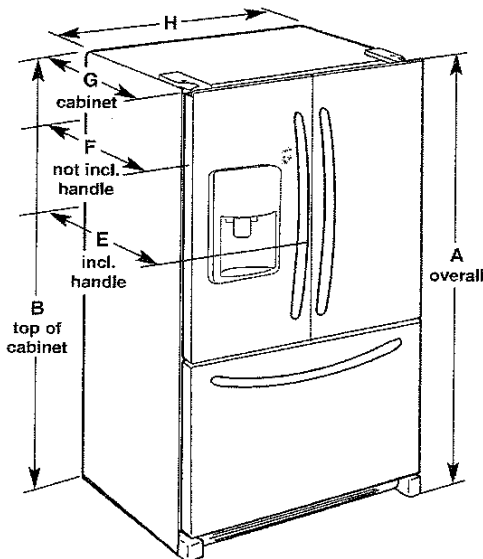
NOTE: If the water pressure is less than what is required, the flow of water from the water dispenser could decrease or ice cubes could be hollow or irregular shaped.

Reverse Osmosis Water Supply

IMPORTANT: The pressure of the water supply coming out of a reverse osmosis system going to the water inlet valve of the refrigerator needs to be between 35 and 120 psi (241 and 827 kPa).

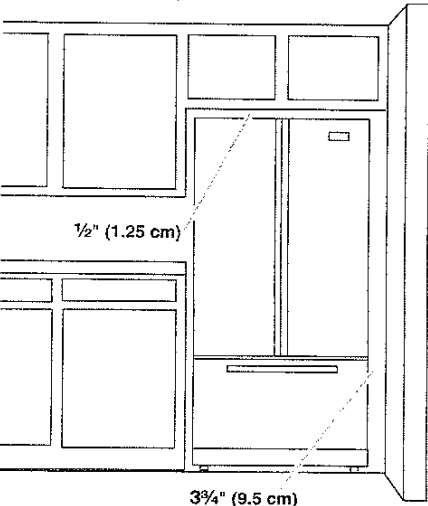
If a reverse osmosis water filtration system is connected to your cold water supply, the water pressure to the reverse osmosis system needs to be a minimum of 40 to 60 psi (276 to 414 kPa).

PRODUCT DIMENSIONS:



Model Number	KRFF507H
Model Size	27 cu. ft. (764.6 L)
Height - Overall "A"	70 1/8" (178.1 cm)
Height - Top of Cabinet "B"	68 3/4" (174.6 cm)
Depth - Doors Open 90° "C"	48 5/8" (123.5 cm)
Depth - Drawer Open With Handles "D"	54 1/8" (137.8 cm)
Depth - With Handles "E"	36" (91.4 cm)
Depth - Without Handles "F"	33 3/4" (85.7 cm)
Depth - Cabinet Only "G"	29 5/8" (75.2 cm)
Width - Cabinet Only "H"	35 5/8" (90.5 cm)
Width - Doors Open 90° "I"	38 3/8" (97.5 cm)

LOCATION REQUIREMENTS:



To ensure proper ventilation for your refrigerator, allow for a 1/2" (1.25 cm) of space on each side and at the top. Allow for a 1" (2.54 cm) space behind the refrigerator. If your refrigerator has an ice maker, allow extra space at the back for the water line connections. When installing your refrigerator next to a fixed wall, leave a 3 3/4" (9.5 cm) minimum space between the refrigerator and wall to allow the door to swing open.

NOTE: This refrigerator is intended for use in a location where the temperature ranges from a minimum of 55°F (13°C) to a maximum of 110°F (43°C). The preferred room temperature range for optimum performance, which reduces electricity usage and provides superior cooling, is between 60°F (15°C) and 90°F (32°C). It is recommended that you do not install the refrigerator near a heat source, such as an oven or radiator.



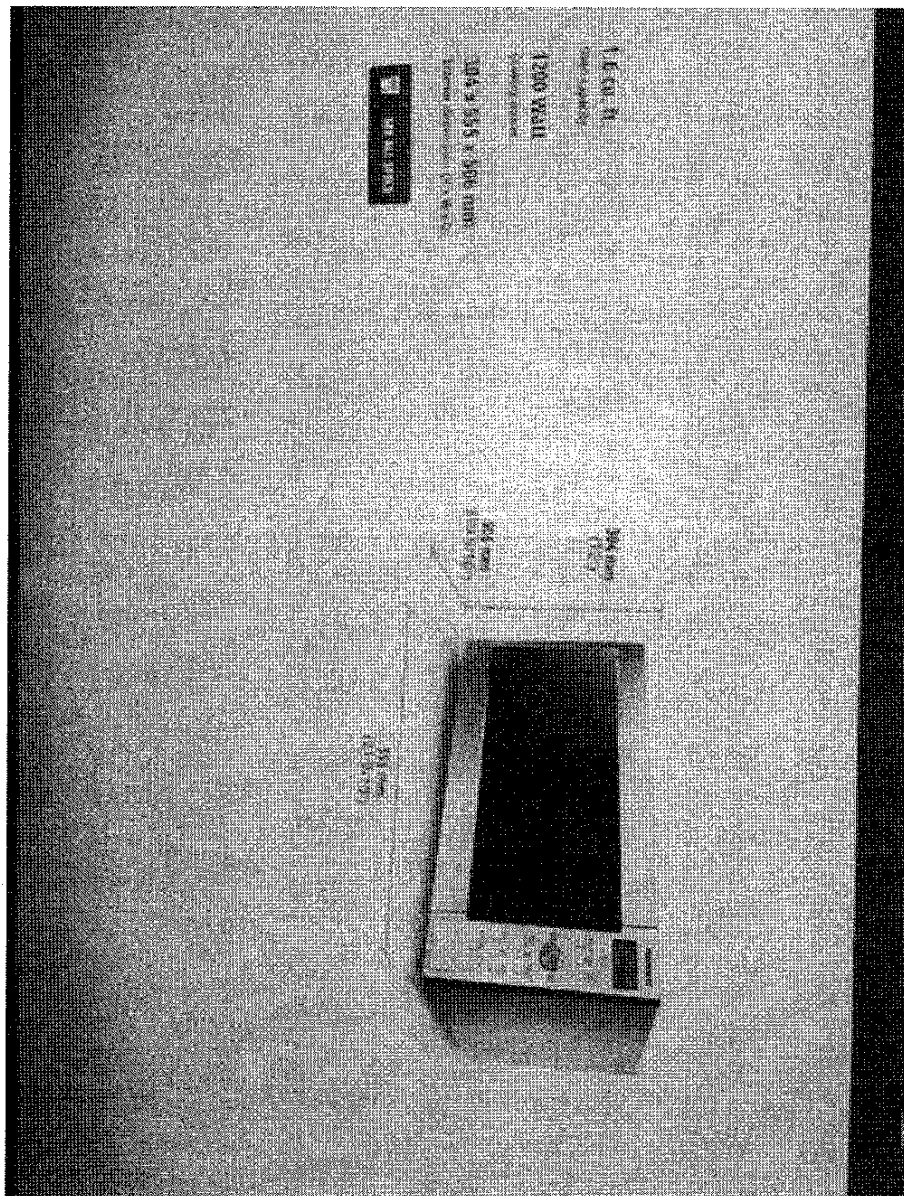
Microwave Ovens Countertop
Countertop NN-SD765S

Lot: 81 Thames PH. 4A
Re: Undercounter Micro.
Spec's

→ SEE ATTACHED FOR SIGNATURES	Model Number	NN-SD765S
	Type	Family-size
→ SEE ATTACHED FOR SIGNATURES	Installation	Countertop or built-in
	Oven Capacity	1.6 cu. ft.
MODEL & SIZE	Cooking Power	1200W
	Turntable Diameter	380mm
PANASONIC TECHNOLOGY	Panasonic Inverter	Cyclonic Inverter
	Genius Sensor	Genius®
DESIGN	Color	Stainless Steel
	Control Panel	Solid Dial + Button
STYLE	Display Panel	New 6 Digit LCD / Green
	Door Window	Smoked Glass
PERFORMANCE	Door Release	Push Open
	Oven Interior	Paint White
PROGRAMMABLE FEATURES	Multi-stage Cooking	3 stage
	Sensor Cook	Yes
	Sensor Reheat	Yes
	Auto Cook/Reheat	Yes
	More / Less Control	Yes
	Inverter Turbo Defrost	Yes
	Keep Warm Button	Yes
	Popcorn Button	Yes
SPECIFICATIONS	Quick Minute	Yes
	Cavity Dimensions (W x D x H)	Approx. 418 x 470 x 228 mm 15.7 x 18.5 x 8.3 inch
ACCESSORIES	Unit Dimensions (W x D x H)	555 x 506 x 304 mm 21.9 x 19.9 x 12 inch
	Carton Dimensions (W x D x H)	627 x 540 x 360 mm
TRIM KITS	27" Model Number	NN-TK722S
	30" Model Number	NN-TK732S
	Accessory	Glass Tray

Lot: 81 Thames PH. 4A.
Re: Undercounter Micro. Spec's Cont'

→ SEE ATTACHED FOR SIGNATURES
→ ~~SEE ATTACHED FOR SIGNATURES~~



Lot: 81 Thames PH. 4A.

Re: Undercounter Micro. Spec's TRIM Kit Spec's



SEE ATTACHED FOR SIGNATURES



SEE ATTACHED FOR SIGNATURES

