

Kingsmen (Thames) Inc. / Havelock Corners (Kingsmen)

Lot/Unit: 55 Phase/Building: 4A Model/Floor Plan: John (4201) Elev C 4 Bed - 2+1 Bath

CABINETRY APPLIANCE - FRIDGE

Inv.4649	1 - To supply & install the 66CM DEEP FRIDGE ENCLOSURE - COUNTER DEPTH WITH - 1 WALL - 1 66CM DEEP GABLE AND 1 66CM DEEP CABINET - THIS IS NOT A ZERO CLEARANCE ENCLOSURE. STANDARD HEIGHTS AND WIDTHS WILL BE USED-CLASSIC SERIES in the kitchen..see sketch #1	
Line 59573	Note:	
22May20 / 28May20		

CABINETRY BASE CABINETS

Inv.4649	1 - To supply & install the POTS & PANS DRAWER - MINIMUM 60 CM - MAXIMUM 90 CM - SIZE SUBJECT TO FLOOR PLAN - CLASSIC SERIES in the kitchen... see sketch # 1	
Line 59577	Note:	
22May20 / 28May20		
Inv.4649	1 - PULL-OUT SPICE RACK CABINET - FULL-HEIGHT CABINET RECEIVES 3 TRAYS - TOP DRAWER CABINET RECEIVES 2 TRAYS - AVAILABLE ONLY IN 30CM AND 40CM WIDE CABINETS - CLASSIC SERIES	
Line 59597	Note:	
22May20 / 28May20		

CABINETRY HARDWARE

Inv.4649	1 - To supply & install the BASE WASTE / RECYCLE CENTER PULL OUT DOOR - ONLY AVAILABLE IN 45 CM CABINET (2) 35L BINS - PRICE IS PER UNIT to the kitchen island..see sketch # 1	
Line 59578	Note:	
22May20 / 28May20		

CABINETRY MICROWAVE OVEN STOVE COOKTOP

Inv.4649	1 - To supply & install the WALL CABINET WITH SHELF FOR MICROWAVE - FINISHED INTERIOR - OPENING 24INCHESW X 13 3 - 4INCHESH X 17INCHESD - CLASSIC SERIES in the kitchen..see sketch # 1	
Line 59574	Note: The elec. outlet is sold sep. and is mandatory with this upgrade.	
22May20 / 28May20		

CABINETRY PANTRY

Inv.4649	2 - To supply & install a 24" +- wide, 2 door wide PANTRY 66 CM DEEP IN LIEU OF UPPER - BASE - COUNTER DEPTH - PRICE IS PER FOOT - CLASSIC SERIES in the kitchen..see sketch # 1	
Line 59576	Note:	
22May20 / 28May20		

CABINETRY VANITY

Inv.4649	1 - To supply & install a VANITY BANK OF DRAWERS - MAX. WIDTH 55CM - CLASSIC SERIES in the master ensuite bathroom... see sketch # 2	
Line 59571	Note:	
22May20 / 28May20		
Inv.4649	1 - To supply & install a VANITY BANK OF DRAWERS - MAX. WIDTH 55CM - CLASSIC SERIES in the main bathroom... see sketch # 2	
Line 59572	Note:	
22May20 / 28May20		

Kingsmen (Thames) Inc. / Havelock Corners (Kingsmen)

Lot/Unit: 55 Phase/Building: 4A Model/Floor Plan: John (4201) Elev C 4 Bed - 2+1 Bath

ELECTRICAL

Inv.4649	1 - To supply & install the standard T.V. rough in the great room and master bedroom..see sketch # 1 & # 2	
Line 59561	Note: Install the t.v. rough in in the great rom at approx. 66 " + - up from the floor centered + - to the F/P mantle	
22May20 / 28May20	This is for a future wall mount t.v.	
Inv.4649	1 - To supply & install the standard Phone rough in in the great room, master bedroom and bedroom # 2..see sketch #1 & # 2	
Line 59562	Note:	
22May20 / 28May20		
Inv.4649	1 - To SUPPLY AND INSTALL AN ADDITIONAL BASIC RECEPTACLE (NOT DEDICATED) at approx. 66 " + - up from the floor centered to the F/P mantle in the great room	
Line 59564	Note: See sketch # 1	
22May20 / 28May20	This is for a future wall mount t.v.	
Inv.4649	1 - To SUPPLY AND INSTALL CONDUIT FROM PANEL in the basement TO ATTIC	
Line 59565	Note:	
22May20 / 28May20		
Inv.4649	1 - To SUPPLY AND INSTALL EXTRA CEILING BOX ROUGH IN CAPPED (DOES NOT INCLUDE SWITCH) over the breakfast bar in the kitchen... see sketch # 1	
Line 59567	Note: This capped ceiling elec. will be connected to a sep. switch, switch is sold sep.	
22May20 / 28May20		
Inv.4649	1 - To supply & install AN ADDITIONAL SINGLE POLE SWITCH connected to the upgraded ceiling capped elec. over the breakfast bar in the kitchen..	
Line 59568	Note:	
22May20 / 28May20		
Inv.4649	1 - To SUPPLY AND INSTALL MICROWAVE PLUG (DEDICATED CIRCUIT AND INCLUDES ARC FAULT BREAKER) for the micorwave shelf in the kitchen..see sketch # 1	
Line 59575	Note:	
22May20 / 28May20		
Inv.4649	1 - Relocate the standard light in the great room area... see sketch # 1	
Line 59652	Note:	
22May20 / 28May20		
Inv.4649	1 - To SUPPLY AND INSTALL EXTRA CEILING BOX ROUGH IN CAPPED (DOES NOT INCLUDE SWITCH) in the great room... see sketch #1	
Line 59653	Note: This capped ceiling elec. will be connected to the relocated standard light in the great room, both connected to the standard switch.	
22May20 / 28May20		

HEATING AND AIR CONDITIONING

MISCELLANEOUS



CONSTRUCTION SUMMARY

Kingsmen (Thames) Inc. / Havelock Corners (Kingsmen)

Lot/Unit: 55 Phase/Building: 4A Model/Floor Plan: John (4201) Elev C 4 Bed - 2+1 Bath

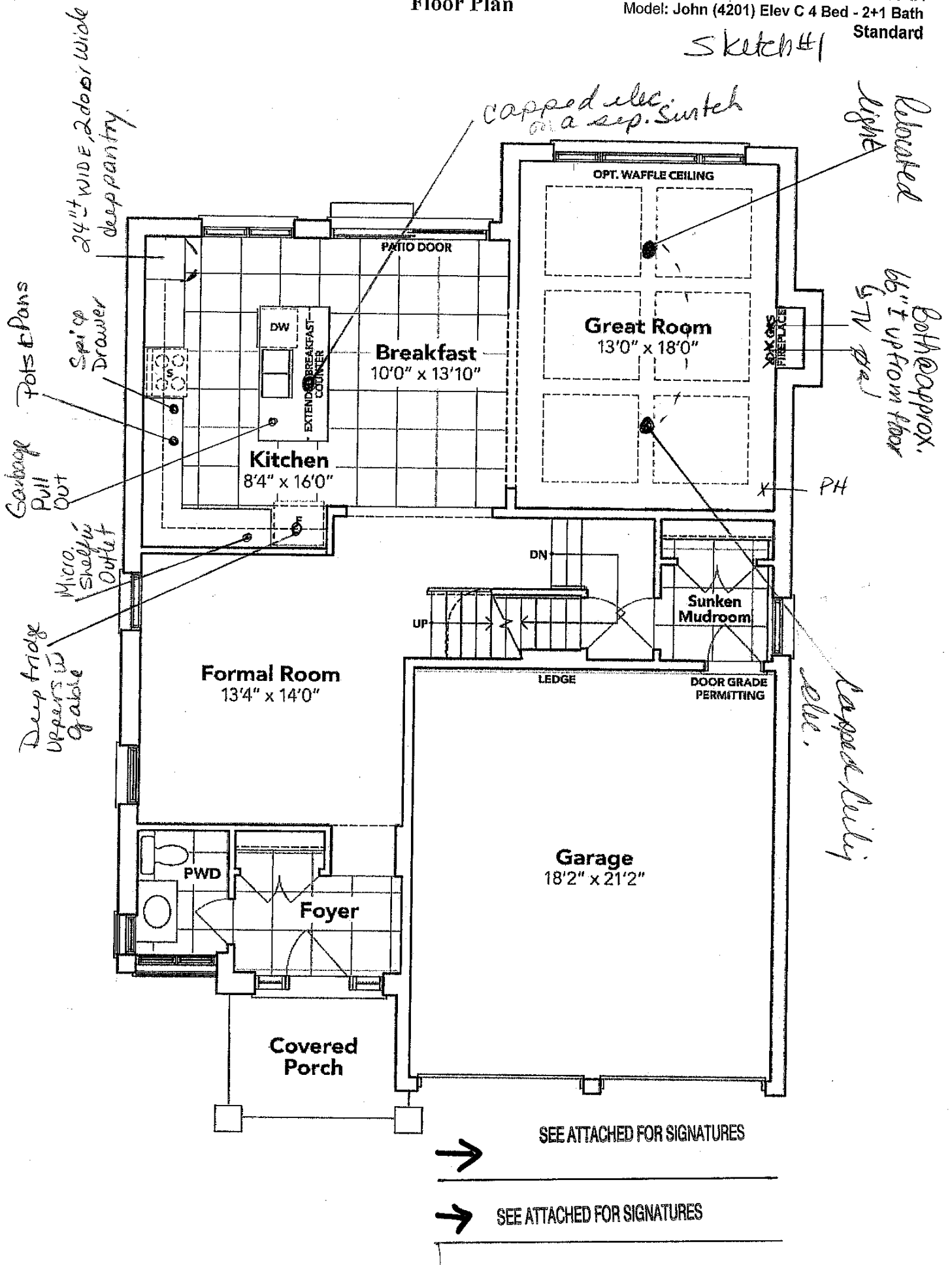
EXTRAS AS PER OFFER

VENDOR TO INSTALL CAPPED GAS LINE (ROUGH-IN ONLY) AT REAR OF HOME FOR FUTURE BBQ LOCATION. LOCATION TO BE FINALIZED AT VENDORS SOLE DISCRETION. <i>Worksheet</i> Note:	
VENDOR TO SUPPLY & INSTALL AIR CONDITIONING UNIT, SIZED ACCORDINGLY, FROM VENDORS STANDARD SAMPLES. <i>Worksheet</i> Note:	

SCHEDULE "B-1"
Floor Plan

Lot 55
Phase 4A
Model: John (4201) Elev C 4 Bed - 2+1 Bath
Standard

Sketch #1

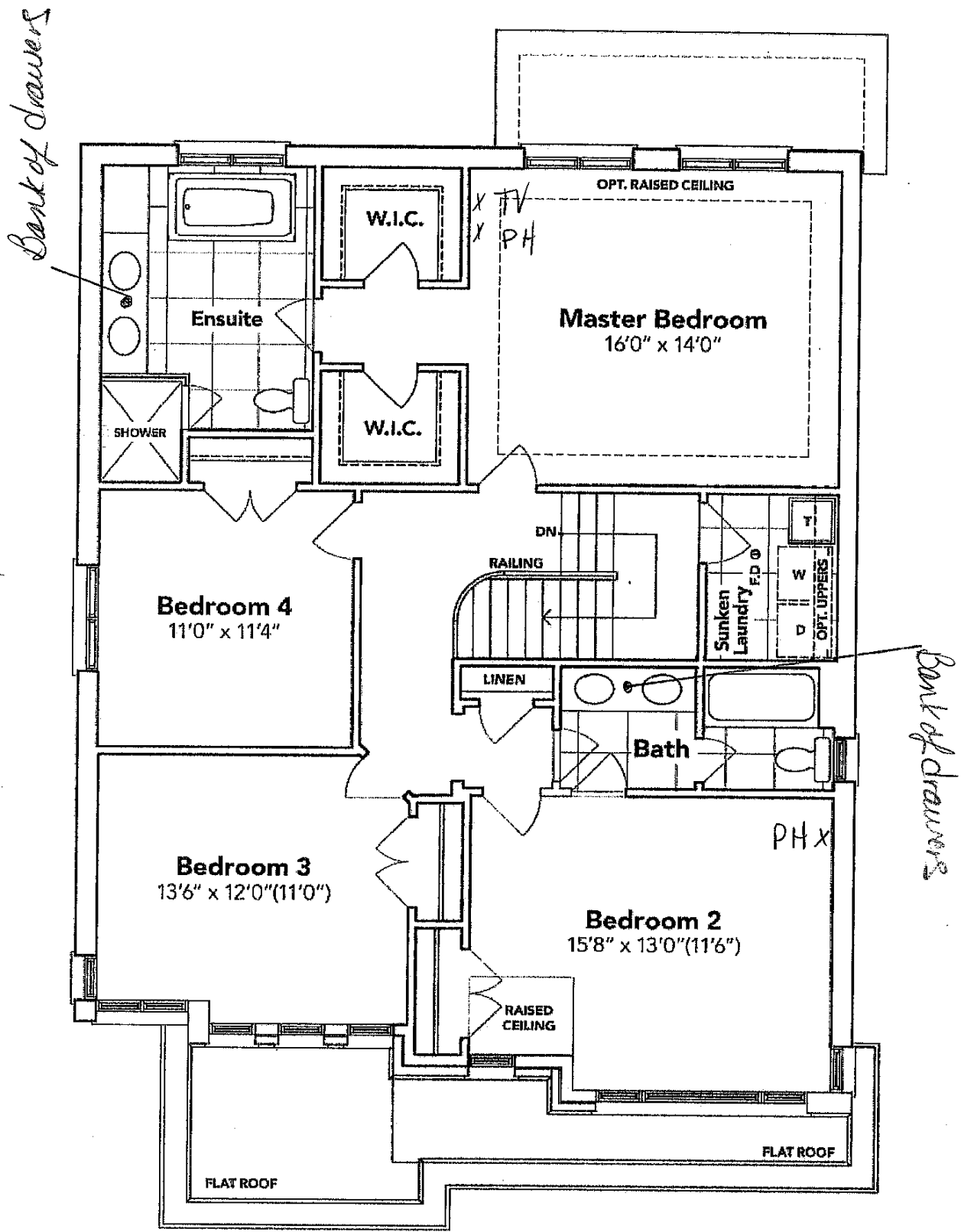


GROUND FLOOR EL. C

The floor plans and elevations shown are pre-construction plans and may be revised or improved as necessitated by architectural controls and the construction process. The measurements adhere to the rules and regulations of the TARION Warranty Corporation's official method for the calculation of floor area. Materials, specifications and floor plans are subject to change without notice. All house renderings are artist's concept only. Actual usable floor space may vary from the stated floor area. All options shown are upgrades. E. & O. E.

SCHEDULE "B-1"
Floor Plan

Lot 55
Phase 4A
Model: John (4201) Elev C 4 Bed - 2+1 Bath
Standard
Sketch #2



→ SEE ATTACHED FOR SIGNATURES
→ SEE ATTACHED FOR SIGNATURES

SECOND FLOOR EL. C

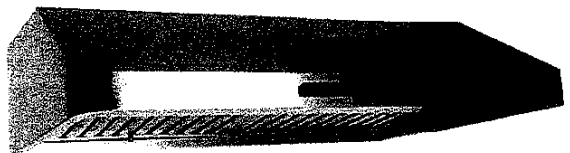
The floor plans and elevations shown are pre-construction plans and may be revised or improved as necessitated by architectural controls and the construction process. The measurements adhere to the rules and regulations of the TARION Warranty Corporation's official method for the calculation of floor area. Materials, specifications and floor plans are subject to change without notice. All house renderings are artist's concept only. Actual usable floor space may vary from the stated floor area. All options shown are upgrades, E. & O. E.

LOT: 55 Thames PH: 4A

RE: UPG. 30" Hood Fan for Kitchen

Specifications

Air Flow Volume: 680 CFM
Electrical Connection: 120V/60Hz
Power Consumption: 210 Watts
Current: 2.4 Amps
Fan Speed: 1550 RPM
Finishes: Stainless Steel
Duct: 6" Round
Knock-out: 3 1/4" x 10" Rectangular
(Top Only)
Dimensions: Width: 30"/36"
Height: 8"
Depth: 22"
Noise Level: Min. 2 Sones
Max. 7 Sones



Ordering Model Chart

Model	Colour	Knock-out	Duct	Size	Filter
NA330R30	Stainless Steel	3 1/4" x 10"	6" Round	30"	Baffle
NA330R36	Stainless Steel	3 1/4" x 10"	6" Round	36"	Baffle



SEE ATTACHED FOR SIGNATURES

Notes



SEE ATTACHED FOR SIGNATURES

Cyclone[®]
Breathe Better