



CONSTRUCTION SUMMARY

Kingsmen (Thames) Inc. / Havelock Corners (Kingsmen)

Lot/Unit: 59 Phase/Building: 4A Model/Floor Plan: James (3601) Elev A 4 Bed - 2+1 Bath

CABINETRY

Inv.4632	1 - To accomodate for the upgraded 30" Chimney hood fan in the kitchen... see spec's	
Line 59180	Note:	
5May20 / 13May20		

CABINETRY APPLIANCE - FRIDGE

Inv.4632	1 - To supply & install a 66CM DEEP FRIDGE ENCLOSURE - COUNTER DEPTH WITH NO WALLS - 2 66CM DEEP GABLES AND 1 66CM DEEP CABINET - THIS IS NOT A ZERO CLEARANCE ENCLOSURE. STANDARD HEIGHTS AND WIDTHS WILL BE USED. - VIKING SERIES..in the kitchen	
Line 59192	Note: See sketch # 1	
5May20 / 13May20 (this is required if no pantry is purchased)		

CABINETRY HOOD FANS

Inv.4632	1 - To supply & install the HOOD FAN - PRO COLLECTION (SCB72230) WALL MOUNT RANGE HOOD WITH 650 CFM FAN - 30 INCH in the kitchen... see spec's	
Line 59179	Note:	
5May20 / 13May20		

ELECTRICAL

Inv.4632	1 - To supply & install the standard T.V. rough in in the great room and master bedroom... see sketch # 1 & # 2	
Line 59183	Note: Install the T.V. rough in in the great room at approx. 66 " + - up from the floor next to the upg. elec. outlet and standard Phone rough in.	
5May20 / 13May20 This is for a future wall mount T.V.		
Inv.4632	1 - To supply & install the standard phone rough in in the great room, master bedroom and bedroom # 2...see sketch #1 & 2	
Line 59184	Note: Install the phone rough in in the great room at approx. 66 " + - up from the floor next to the upg. elec. outlet and standard T.V. rough in.	
5May20 / 13May20 This is for a future wall mount T.V.		
Inv.4632	1 - To SUPPLY AND INSTALL AN ADDITIONAL BASIC RECEPTACLE (NOT DEDICATED) at approx. 66 " + - up from the floor centered + - to the F/P mantle..see sketch # 1	
Line 59185	Note:	
5May20 / 13May20		
Inv.4632	1 - To SUPPLY AND INSTALL EXTRA CEILING BOX ROUGH IN CAPPED (DOES NOT INCLUDE SWITCH) over the breakfast bar in the kitchen... see sketch # 1	
Line 59186	Note: This capped ceiling elec. will be connected to a sep. switch, switch is sold sep.	
5May20 / 13May20		
Inv.4632	1 - To supply & install AN ADDITIONAL SINGLE POLE SWITCH connected to the upgraded capped ceiling elec. over the breakfast bar in the kitchen.	
Line 59187	Note:	
5May20 / 13May20		
Inv.4632	1 - Relocate the standard ceiling light from the upper stair landing to the O.T.B. area on the second floor.... see sketch # 2	
Line 59188	Note:	
5May20 / 13May20		

HEATING AND AIR CONDITIONING

Kingsmen (Thames) Inc. / Havelock Corners (Kingsmen)

Lot/Unit: 59 Phase/Building: 4A Model/Floor Plan: James (3601) Elev A 4 Bed - 2+1 Bath

MISCELLANEOUS

Inv.4632	1 - To supply & install a capped gas rough in and a 110V elec. outlet (code requirement) for a future gas stove in the kitchen..	
Line 59178	Note:	
5May20 / 13May20		

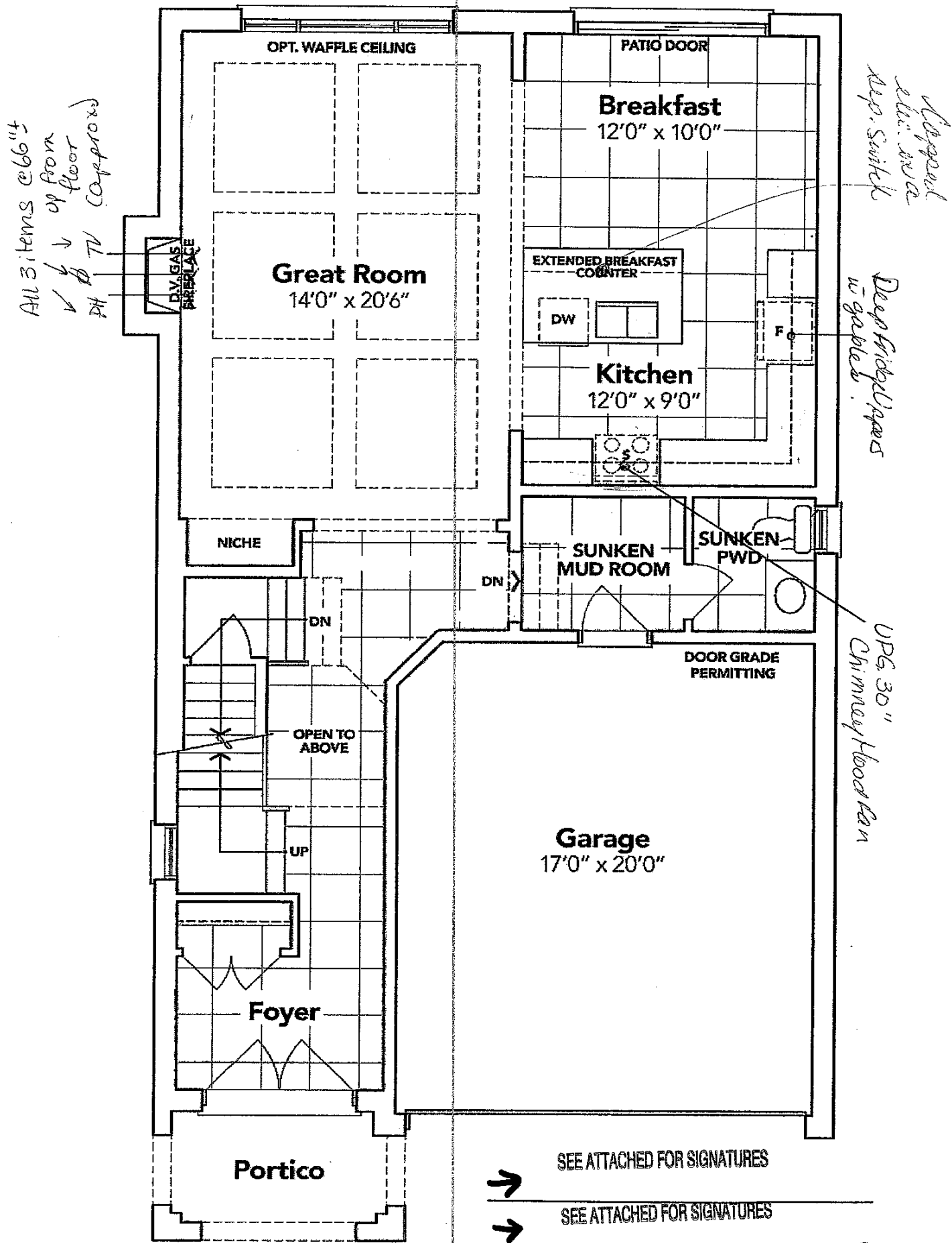
EXTRAS AS PER OFFER

VENDOR TO INSTALL CAPPED GAS LINE (ROUGH-IN ONLY) AT REAR OF HOME FOR FUTURE BBQ LOCATION. LOCATION TO BE FINALIZED AT VENDORS SOLE DISCRETION. <i>Worksheet</i> Note:	
VENDOR TO SUPPLY & INSTALL AIR CONDITIONING UNIT, SIZED ACCORDINGLY, FROM VENDORS STANDARD SAMPLES. <i>Worksheet</i> Note:	

SCHEDULE "B-1"
Floor Plan

Lot 59
Phase 4A
Model: James (3601) Elev A 4 Bed - 2+1 Bath
Standard

Sketch #1

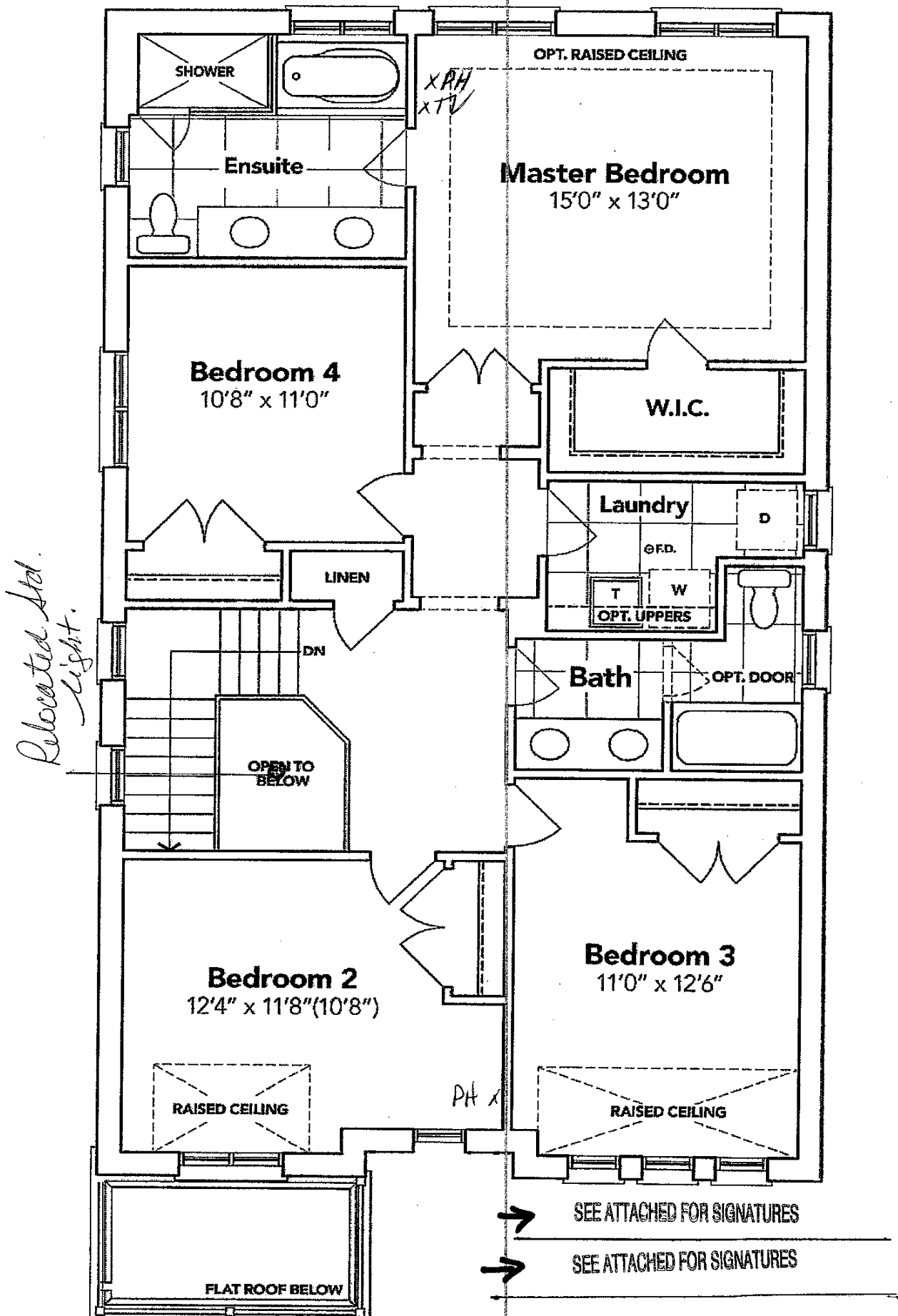


GROUND FLOOR EL. A

The floor plans and elevations shown are pre-construction plans and may be revised or improved as necessitated by architectural controls and the construction process. The measurements adhere to the rules and regulations of the TARION Warranty Corporation's official method for the calculation of floor area. Materials, specifications and floor plans are subject to change without notice. All house renderings are artist's concept only. Actual usable floor space may vary from the stated floor area. All options shown are upgrades. E. & O. E.

SCHEDULE "B-1"
Floor Plan

Lot 59
Phase 4A
Model: James (3601) Elev A 4 Bed - 2+1 Bath
Standard
Sketch #2



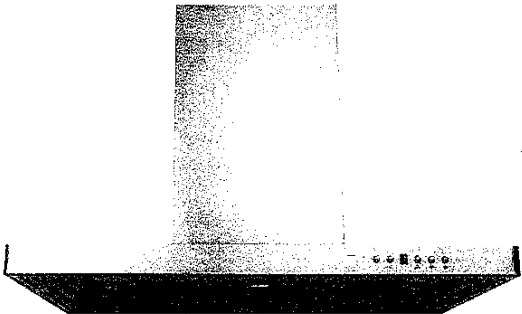
SECOND FLOOR EL. A

The floor plans and elevations shown are pre-construction plans and may be revised or improved as necessitated by architectural controls and the construction process. The measurements adhere to the rules and regulations of the TARIION Warranty Corporation's official method for the calculation of floor area. Materials, specifications and floor plans are subject to change without notice. All house renderings are artist's concept only. Actual usable floor space may vary from the stated floor area. All options shown are upgrades. E. & O. E.

Lot: 59 Thames PH: 4A
RE: UPG. 30" Chimney Hood Fan in Kitchen

Specifications

Air Flow Volume: 650 CFM
Electrical Connection: 120V/60Hz
Power Consumption: 240 Watts
Current: 2.0 Amps
Fan Speed: 1599 RPM
Finishes: Stainless Steel
Duct: 6" Round
Knock-out: 6" Round - Top Only
Dimensions: Width: 30"/36"
Height: 44 1/2"
Depth: 19 3/4"
Noise Level: Min. 2 Sones
Max. 7 Sones



SCB722 - Baffle Filter



Ordering Model Chart

Model	Colour	Knock-out	Duct	Size	Filter	CFM
SCB72230	Stainless Steel	6"	6" Round	30"	Baffle	650
SCB72236	Stainless Steel	6"	6" Round	36"	Baffle	850

SEE ATTACHED FOR SIGNATURES

Notes

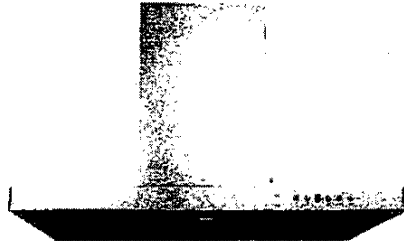
SEE ATTACHED FOR SIGNATURES

Cyclone®

LOT: 59 THOMAS PH. 9A
RE: OPG. 30" Chimney Hood Fan in Kitchen

Specifications

Air Flow Volume: 650 CFM
Electrical Connection: 120V/60Hz
Power Consumption: 240 Watts
Current: 2.0 Amps
Fan Speed: 1599 RPM
Finishes: Stainless Steel
Duct: 6" Round
Knock-out: 6" Round - Top Only
Dimensions: Width: 30"/36"
Height: 44 1/2"
Depth: 19 3/4"
Noise Level: Min. 2 Sones
Max. 7 Sones



SCB722 - Baffle Filter



Ordering Model Chart

Model	Colour	Knock-out	Duct	Size	Filter	CFM
SCB72230	Stainless Steel	6"	6" Round	30"	Baffle	650
SCB72236	Stainless Steel	6"	6" Round	36"	Baffle	860

Notes

→ *[Handwritten signature]*
→ *[Handwritten signature]*

Cyclone®