



CONSTRUCTION SUMMARY

Kingsmen (Thames) Inc. / Havelock Corners (Kingsmen)

Lot/Unit: 5 Phase/Building: 4A Model/Floor Plan: Louis (4203) Elev B 4 Bed - 4+1 Bath

CABINETRY

Inv.4647	1 - See fridge spec's attached.	
Line 59548	Note: ***PURCHASER HAS NOT PURCHASED THE ROUGH IN WATERLINE ***	
20May20 / 21May20		

ELECTRICAL

Inv.4647	1 - To supply & install the standard T.V. rough in in the great room and master bedroom...see sketch # 1 & # 2	
Line 59549	Note:	
20May20 / 21May20		
Inv.4647	1 - To supply & install the standard Phone rough in in the kitchen, great room and master bedroom...see sketch # 1 & # 2	
Line 59550	Note:	
20May20 / 21May20		
Inv.4647	1 - To SUPPLY AND INSTALL AN ADDITIONAL BASIC RECEPTACLE (NOT DEDICATED) next to +- the standard phone and T.V. cable rough in in the great room..	
Line 59551	Note: ...see sketch # 1	
20May20 / 21May20		

HEATING AND AIR CONDITIONING

Inv.4647	1 - To supply & install a capped gas rough in and a 110V elec. (code requirement) for a future gas stove in the kitchen...	
Line 59547	Note:	
20May20 / 21May20		

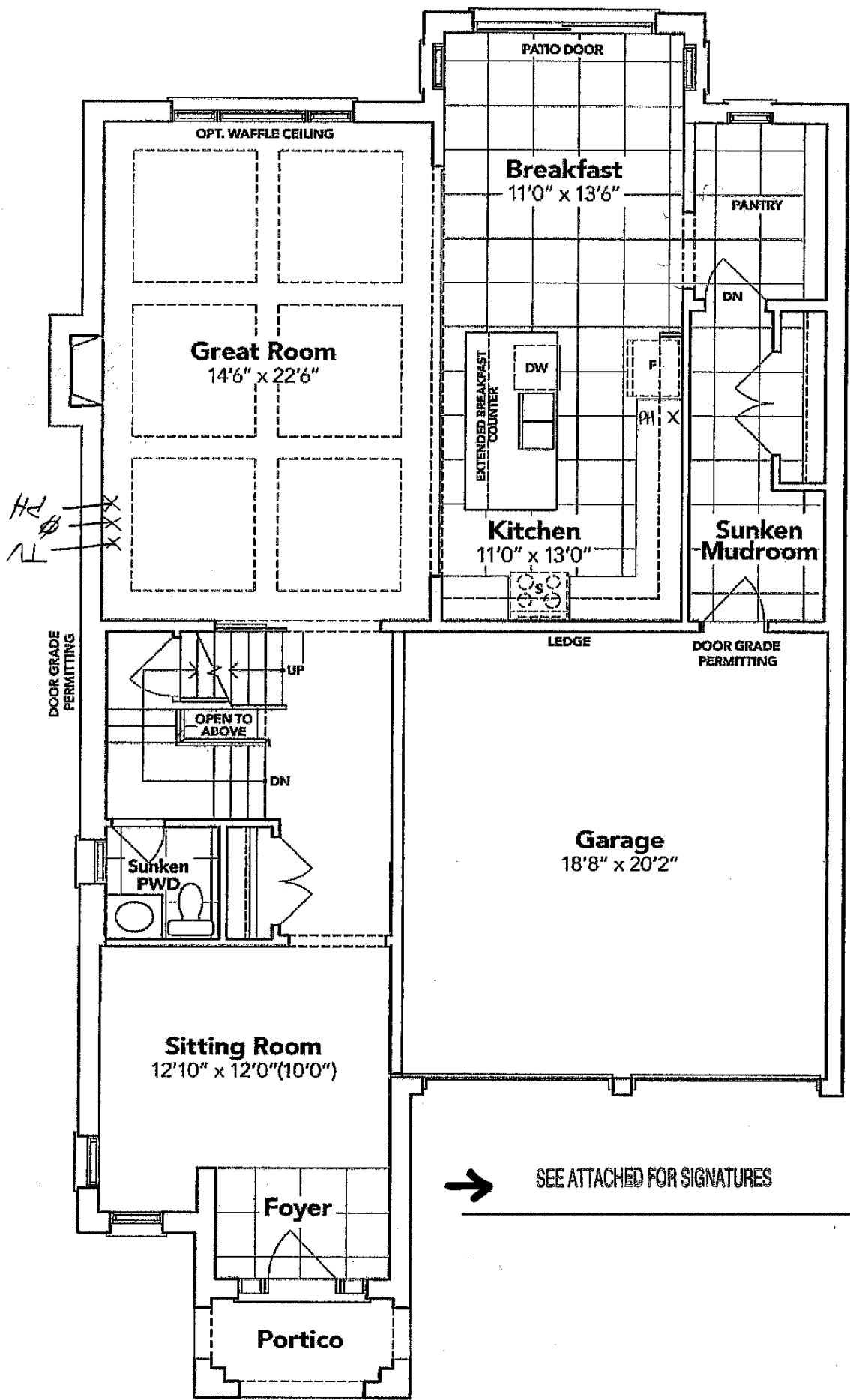
EXTRAS AS PER OFFER

VENDOR TO INSTALL CAPPED GAS LINE (ROUGH-IN ONLY) AT REAR OF HOME FOR FUTURE BBQ LOCATION. LOCATION TO BE FINALIZED AT VENDORS SOLE DISCRETION. Worksheet Note:	
VENDOR TO SUPPLY & INSTALL AIR CONDITIONING UNIT, SIZED ACCORDINGLY, FROM VENDORS STANDARD SAMPLES. Worksheet Note:	

SCHEDULE "B-1"
Floor Plan

Lot 5
Phase 4A
Model: Louis (4203) Elev B 4 Bed - 4+1 Bath
Standard

Sketch #1



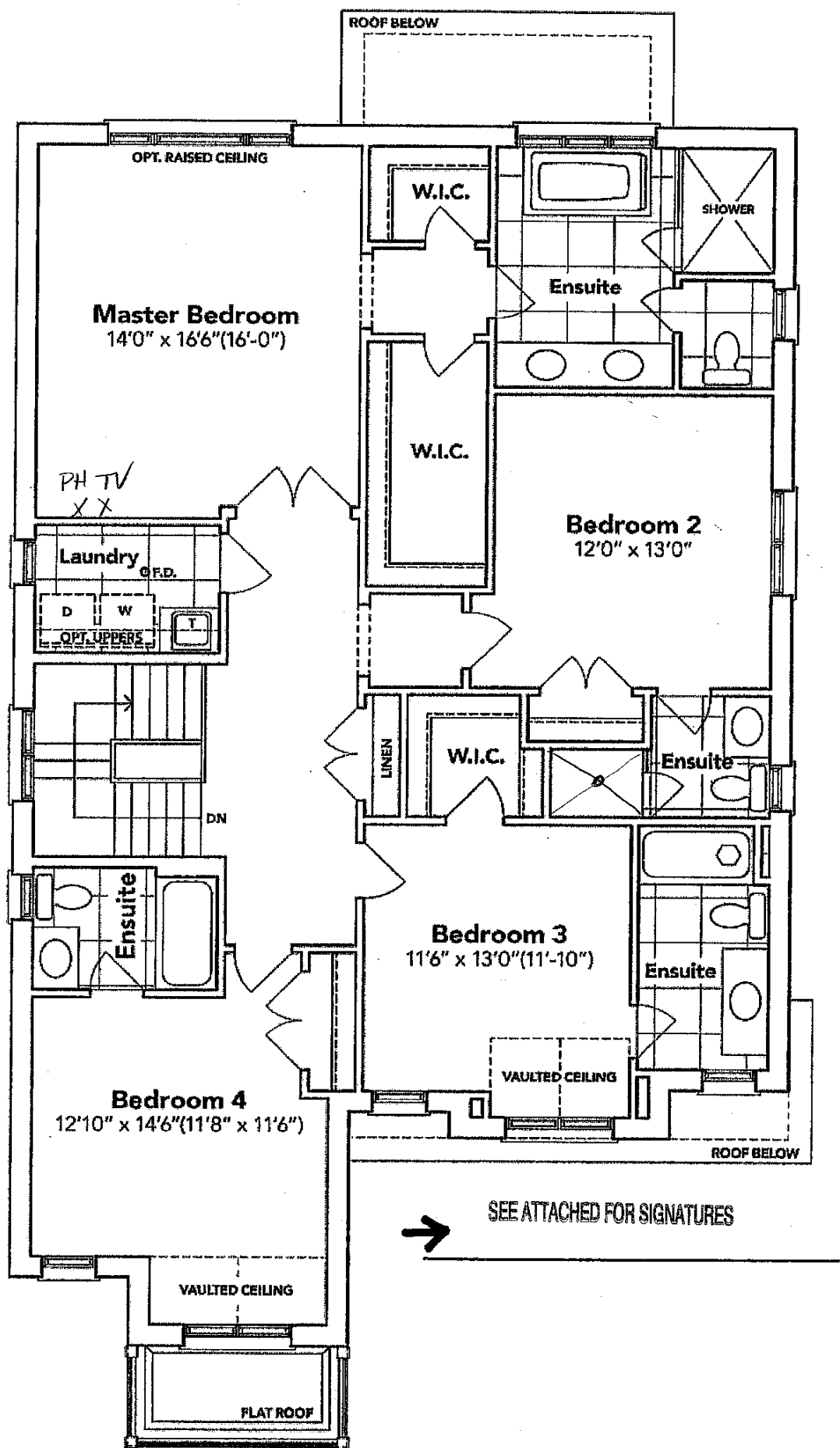
GROUND FLOOR EL. B

The floor plans and elevations shown are pre-construction plans and may be revised or improved as necessitated by architectural controls and the construction process. The measurements adhere to the rules and regulations of the TARION Warranty Corporation's official method for the calculation of floor area. Materials, specifications and floor plans are subject to change without notice. All house renderings are artist's concept only. Actual usable floor space may vary from the stated floor area. All options shown are upgrades. E. & O. E.

SCHEDULE "B-1"
Floor Plan

Lot 5
Phase 4A
Model: Louis (4203) Elev B 4 Bed - 4+1 Bath
Standard

Sketch #2



SECOND FLOOR EL. B

The floor plans and elevations shown are pre-construction plans and may be revised or improved as necessitated by architectural controls and the construction process. The measurements adhere to the rules and regulations of the TARION Warranty Corporation's official method for the calculation of floor area. Materials, specifications and floor plans are subject to change without notice. All house renderings are artist's concept only. Actual usable floor space may vary from the stated floor area. All options shown are upgrades. E. & O. E.

Lot: 5 Thames PH: 4A
RE: FRIDGE SPEC'S

* NO ROUGH IN WATERLINE PURCHASED *

RF28R7201SR

SAMSUNG

28 cu. ft. 4-Door French Door Refrigerator

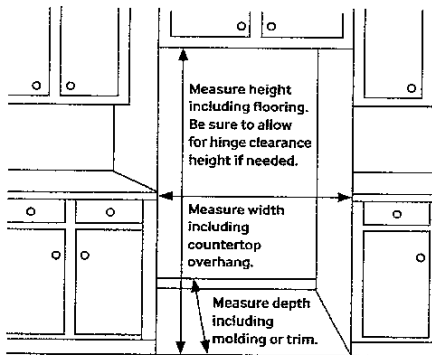


Installation Specifications

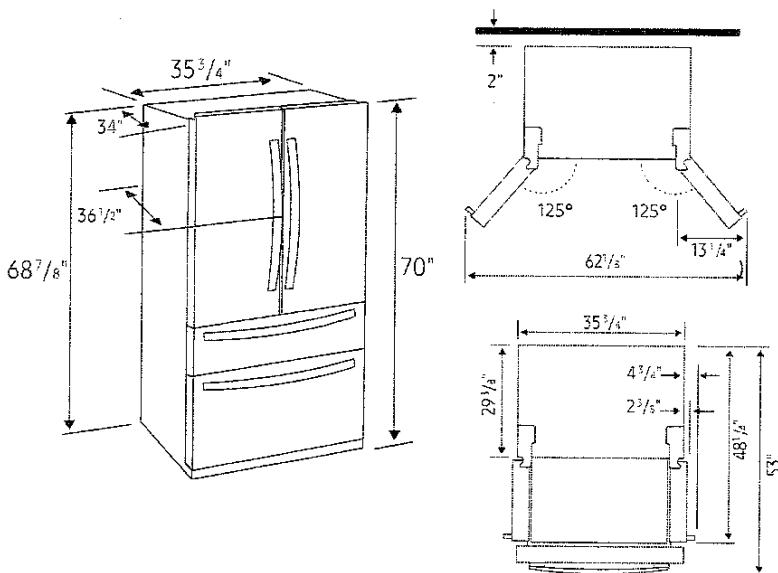
1. Measure the height, width and depth of the opening, making sure to include baseboards, molding tile, countertop overhang, etc. Check to be sure there is enough room to open the door (consider walls, islands or other obstacles when measuring).
2. Refer to illustration below to determine dimensions.
3. Allow 2.5" of clearance on hinge side of refrigerator when installing next to a wall where handle may make contact.
4. Allow 1" minimum clearance at rear for proper air circulation and water/electrical connections. Allow a 3/8" minimum clearance at sides and top for ease of installation.
5. Ensure each door and entryway in the home is wide enough for the refrigerator to be moved through easily.

For optimal usage and to be able to open refrigerator doors completely, do not install next to a wall.

Please note: The following dimension and cutout information is for planning purposes only. For complete installation details, consult manual packed with product, or download manual online at samsung.com.



Dimensions



Total Capacity: 28 cu. ft.

Refrigerator: 15.9 cu. ft.

- Modern External Filtered Water and Ice Dispenser – Crushed or Cubed Ice
- Ice Max
- 2 Humidity-Controlled Crispers
- Tempered Glass Spill-Proof Shelves
- Adjustable Shelf for Tall Oversized Items
- 6 Door Bins
 - Right Door: 3 Gallon Bins
 - Left Door: 3 Regular Bins
- High-Efficiency LED Lighting

FlexZone™ Drawer: 3.8 cu. ft.

- EZ-Open Handle™
- 4 Temperature Zones with Smart Divider:
 - Meat/Fish (-1°C)
 - Cold Drinks (1°C)
 - Deli/Snacks (3°C)
 - Wine/Party Dishes (5°C)
- High-Efficiency LED Lighting

Freezer: 8.3 cu. ft.

- EZ-Open Handle™
- 1 Drawer Divider
- High-Efficiency LED Lighting

Warranty

One (1) Year Parts and Labour on Refrigerator
Ten (10) Years Parts only on Digital Inverter Compressor

Product Dimensions & Weight

Dimensions (WxHxD with hinges, handles and doors):
35 3/4" x 70" x 36 1/2"

Dimensions (WxHxD without hinges and door):
35 3/4" x 68 7/8" x 29 3/8"

Dimensions (WxHxD with hinge and door, no handle):
35 3/4" x 70" x 34"

Weight: 322 lbs.

Shipping Dimensions & Weight (WxHxD)

Dimensions: 38 1/4" x 75 3/4" x 36 1/4"

Weight: 344 lbs.

Colour

Fingerprint Resistant
Stainless Steel

Model

RF28R7201SR

UPC Code

887276304922

Fingerprint Resistant
Black Stainless Steel

RF28R7201SG

887276304915

Assets

Access RF28R7201SR assets on Box.com -
<https://app.box.com/folder/70795415032>

RF28R7201SG -

<https://app.box.com/folder/70796485672>

Lot: 5. THUNDER PD. 4A
REF. FRIDGE SPECS

* NO ROUGH IN WATERLINE PURCHASED *

RF28R7201SR

SAMSUNG

28 cu. ft. 4-Door French Door Refrigerator

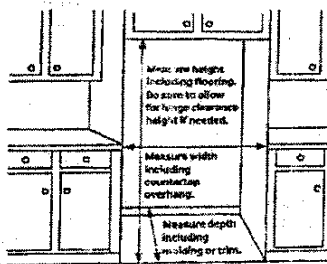
→ Kulwant Singh

Installation Specifications

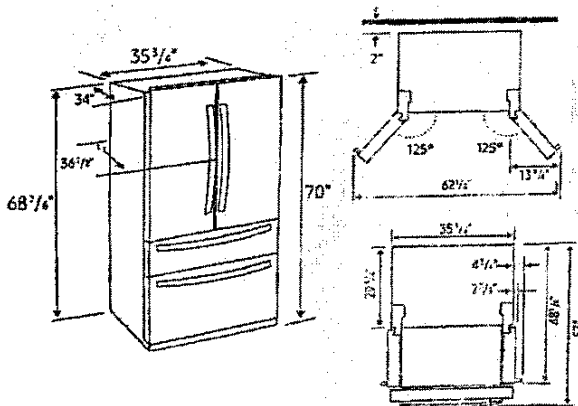
1. Measure the height, width and depth of the opening, making sure to include baseboards, molding, tile, counter-top overhang, etc. Check to be sure there is enough room to open the door (consider walls, islands or other obstacles when measuring).
2. Refer to illustration below to determine dimensions.
3. Allow 2.5" of clearance on hinge side of refrigerator when installing next to a wall where handle may make contact.
4. Allow 1" minimum clearance at rear for proper air circulation and water/electrical connections. Allow a 3/8" minimum clearance at sides and top for ease of installation.
5. Ensure each door and entryway in the home is wide enough for the refrigerator to be moved through easily.

For optimal usage and to be able to open refrigerator doors completely, do not install next to a wall.

Please note: The following dimension and cutout information is for planning purposes only. For complete installation details, consult manual packed with product, or download manual online at samsung.com.



Dimensions



Total Capacity: 28 cu. ft.

Refrigerator: 15.9 cu. ft.

- Modern External Filtered Water and Ice Dispenser
 - Crushed or Cubed Ice
- Ice Max
- 2 Humidity-Controlled Crispers
- Tempered Glass Spill-Proof Shelves
- Adjustable Shelf for Tall Oversized Items
- 6 Door Bins
 - Right Door: 3 Gallon Bins
 - Left Door: 3 Regular Bins
- High-Efficiency LED Lighting

FlexZone™ Drawer: 3.8 cu. ft.

- EZ-Open Handle™
- 4 Temperature Zones with Smart Divider:
 - Meat/Fish (-1°C)
 - Cold Drinks (1°C)
 - Deli/Snacks (3°C)
 - Wine/Party Dishes (5°C)
- High-Efficiency LED Lighting

Freezer: 8.3 cu. ft.

- EZ-Open Handle™
- 1 Drawer Divider
- High-Efficiency LED Lighting

Warranty

One (1) Year Parts and Labour on Refrigerator
Ten (10) Years Parts only on Digital Inverter Compressor

Product Dimensions & Weight

Dimensions (WxHxD with hinges, handles and doors):
35 1/2" x 70" x 36 1/2"

Dimensions (WxHxD without hinges and door):
35 1/2" x 68 7/8" x 29 1/8"

Dimensions (WxHxD with hinge and door, no handle):
35 1/2" x 70" x 34"

Weight: 322 lbs.

Shipping Dimensions & Weight (WxHxD)

Dimensions: 36 1/4" x 75 3/4" x 34 1/4"

Weight: 344 lbs.

Colour	Model #	UPC Code
Fingerprint Resistant Stainless Steel	RF28R7201SR	887276304922
Fingerprint Resistant Black Stainless Steel	RF28R7201SG	887276304915

Assets

Access RF28R7201SR assets on Box.com -
<https://app.box.com/folder/70795415032>

RF28R7201SG -

<https://app.box.com/folder/70794846672>