

Kingsmen (Thames) Inc. / Havelock Corners (Kingsmen)

Lot/Unit: 53    Phase/Building: 4A    Model/Floor Plan: Spencer (4204) Elev C 4 Bed - 4+1 Bath

CABINETRY

Inv.4622	1 - Purchaser has uggraded to a 30" Chimney hood fan... see spec's	
Line 59054	Note: This is to accomodate the chimney hood fan.	
28Apr20 / 5May20		

CABINETRY HOOD FANS

Inv.4622	1 - HOOD FAN - PRO COLLECTION (SCB72230) WALL MOUNT RANGE HOOD WITH 650 CFM FAN - 30 INCH	
Line 59053	Note:	
28Apr20 / 5May20		

CABINETRY VANITY

Inv.4622	1 - To supply & install the VANITY BANK OF DRAWERS - MAX. WIDTH 55CM - CLASSIC SERIES in the master ensuite ... see sketch # 2	
Line 59110	Note:	
28Apr20 / 5May20		

ELECTRICAL

Inv.4622	2 - To supply & install TWO LED exterior pot lights to the Balcony on the second floor.... see sketch # 2	
Line 59111	Note: These two exterior pot lights will be connected to a sep switch... switch sold sep.	
28Apr20 / 5May20                      STILL TO INSTALL THE STANDARD EXTERIOR LIGHT AT DOOR AT BALCONY AREA.		
Inv.4622	1 - To supply & install AN ADDITIONAL SINGLE POLE SWITCH connected to the TWO exterior pot lights in at balcony area ....	
Line 59112	Note: Have switch installed in the MEDIA NICHE AREA on the second floor.	
28Apr20 / 5May20		
Inv.4622	1 - To supply & install the standard T.V. in the great room and master bedroom... see sketch # 1 & # 2	
Line 59055	Note:	
28Apr20 / 5May20		
Inv.4622	1 - To supply & install the standard Phone rough in in the kitchen, master bedroom and media room... see sketch # 1 & # 2	
Line 59056	Note:	
28Apr20 / 5May20		
Inv.4622	1 - TO SUPPLY AND INSTALL AN ADDITIONAL BASIC RECEPTACLE (NOT DEDICATED) at approx. 66 " + - up from the floor ... see sketch # 1	
Line 59057	Note: This is for a future wall mount t.v.	
28Apr20 / 5May20		
Inv.4622	1 - To SUPPLY AND INSTALL CONDUIT FOR TV OVER THE FIREPLACE – TERMINATED IN SAME ROOM at approx. 66 " + - up from the floor next to + - the upgraded electrical outlet and terminated next to the std. T.V. rough in in the great room... see sketch # 1	
Line 59058	Note: This is for a wall mount t.v.	
28Apr20 / 5May20		
Inv.4622	1 - To SUPPLY AND INSTALL EXTRA CEILING BOX ROUGH IN CAPPED (DOES NOT INCLUDE SWITCH) over the breakfast bar in the kitchen... see sketch # 1	
Line 59059	Note: This elec. cap rough in will be connected to a sep. switch, switch is sold sep.	
28Apr20 / 5May20		

**Kingsmen (Thames) Inc. / Havelock Corners (Kingsmen)**

**Lot/Unit: 53    Phase/Building: 4A    Model/Floor Plan: Spencer (4204) Elev C 4 Bed - 4+1 Bath**

Inv. <b>4622</b>  <b>Line 59060</b>  28Apr20 / 5May20	<b>1</b> - To supply & install AN ADDITIONAL SINGLE POLE SWITCH connected to the ceiling capped elec. over the breakfast bar in the kitchen.  Note:	
Inv. <b>4622</b>  <b>Line 59061</b>  28Apr20 / 5May20	<b>1</b> - Relocate the standard ceiling light from the upper stair landing to the O.T.B. area on the second floor... see sketch #2  Note:	

**HEATING AND AIR CONDITIONING**

**MISCELLANEOUS**

Inv. <b>4622</b>  <b>Line 59049</b>  28Apr20 / 5May20	<b>1</b> - To supply & install the side door... see sketch # 1  Note:	
---	---	--

**EXTRAS AS PER OFFER**

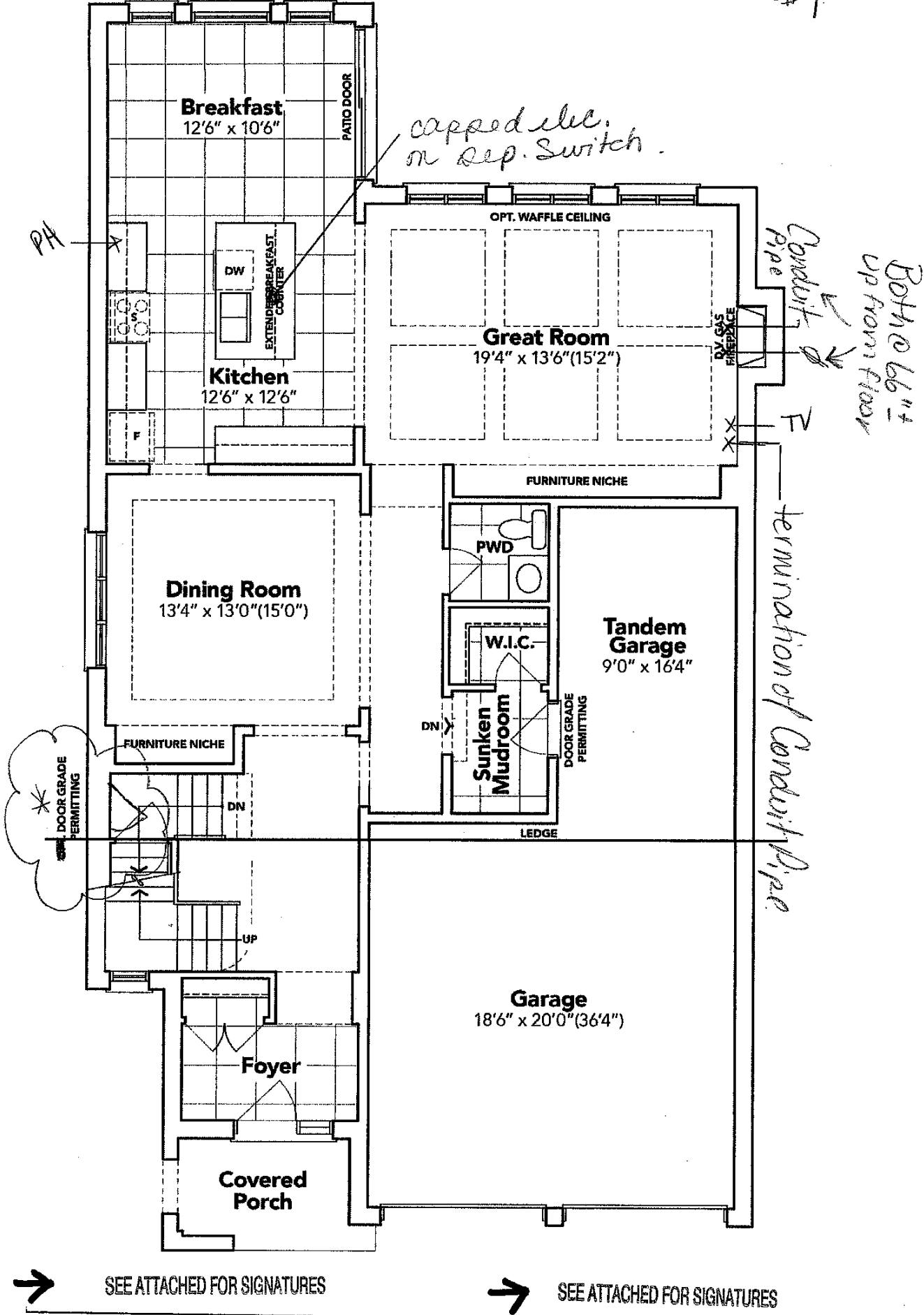
VENDOR TO INSTALL CAPPED GAS LINE (ROUGH-IN ONLY) AT REAR OF HOME FOR FUTURE BBQ LOCATION. LOCATION TO BE FINALIZED AT VENDORS SOLE DISCRETION. <i>Worksheet</i> Note:	
VENDOR TO SUPPLY & INSTALL AIR CONDITIONING UNIT, SIZED ACCORDINGLY, FROM VENDORS STANDARD SAMPLES. <i>Worksheet</i> Note:	

SCHEDULE "B-1"  
Floor Plan

Model: Spencer (4204) Elev C 4 Bed - 4+1 Bath  
Standard

LOT 53  
Phase 4A

Sketch #1

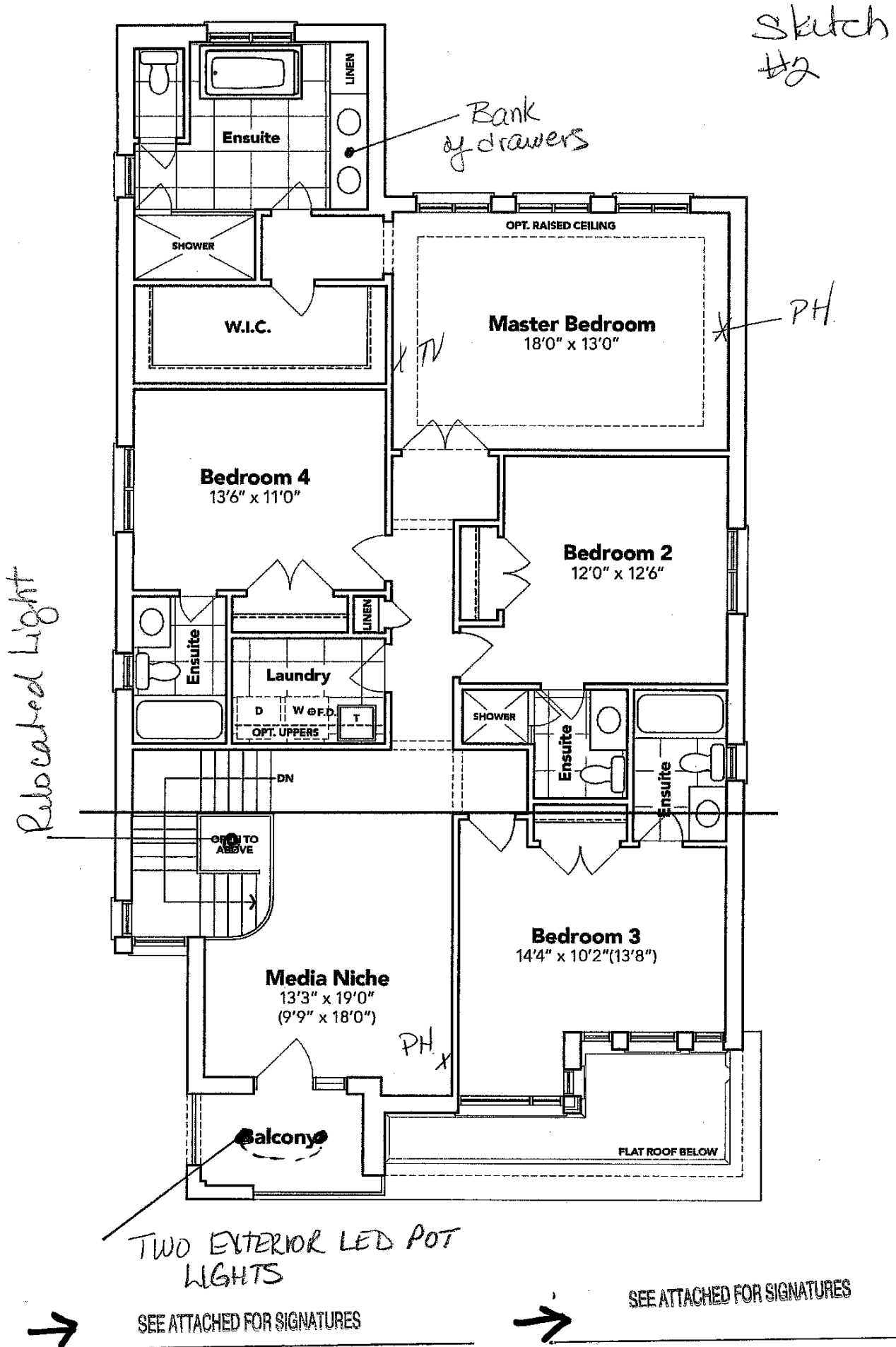


PART. GROUND FLOOR EL. C

The floor plans and elevations shown are pre-construction plans and may be revised or improved as necessitated by architectural controls and the construction process. The measurements adhere to the rules and regulations of the TARION Warranty Corporation's official method for the calculation of floor area. Materials, specifications and floor plans are subject to change without notice. All house renderings are artist's concept only. Actual usable floor space may vary from the stated floor area. All options shown are upgrades. E. & O. E.

**SCHEDULE "B-1"**  
**Floor Plan**

Lot 53  
 Phase 4A  
 Model: Spencer (4204) Elev C 4 Bed - 4+1 Bath  
 Standard



**PART. SECOND FLOOR EL. C**

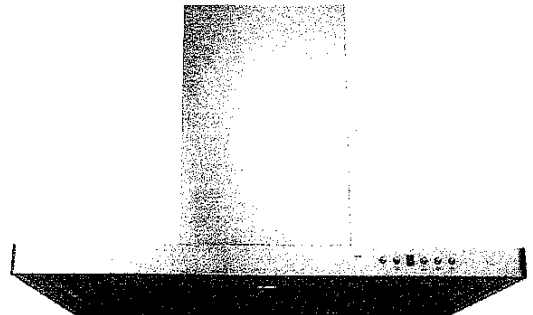
The floor plans and elevations shown are pre-construction plans and may be revised or improved as necessitated by architectural controls and the construction process. The measurements adhere to the rules and regulations of the TARION Warranty Corporation's official method for the calculation of floor area. Materials, specifications and floor plans are subject to change without notice. All house renderings are artist's concept only. Actual usable floor space may vary from the stated floor area. All options shown are upgrades. E. & O. E.

LOT: 53 Havelock Corners PH: 4A

RE: UPG. 30" Chimney Hood Fan

## Specifications

Air Flow Volume: 650 CFM  
Electrical Connection: 120V/60Hz  
Power Consumption: 240 Watts  
Current: 2.0 Amps  
Fan Speed: 1599 RPM  
Finishes: Stainless Steel  
Duct: 6" Round  
Knock-out: 6" Round - Top Only  
Dimensions: Width: 30"/36"  
Height: 44 1/2"  
Depth: 19 3/4"  
Noise Level: Min. 2 Sones  
Max. 7 Sones



SCB722 - Baffle Filter



## Ordering Model Chart

Model	Colour	Knock-out	Duct	Size	Filter	CFM
SCB72230	Stainless Steel	6"	6" Round	30"	Baffle	650
<del>SCB72236</del>	<del>Stainless Steel</del>	<del>6"</del>	<del>6" Round</del>	<del>36"</del>	<del>Baffle</del>	<del>650</del>



SEE ATTACHED FOR SIGNATURES

## Notes



SEE ATTACHED FOR SIGNATURES

**Cyclone**<sup>®</sup>  
Breathe Better