

Kingsmen (Thames) Inc. / Havelock Corners (Kingsmen)

Lot/Unit: 12    Phase/Building: 4A    Model/Floor Plan: Arthur (4205) Elev C 4 Bed - 4+1 Bath

CABINETRY

Inv.4543	1 - Purchaser has upgraded to a 30" Chimney hood fan... see spec's	
Line 59328	Note: This is to accomodate for the 30" chimney hood fan.	
6Feb20 / 13May20		

CABINETRY ACCESSORIES

Inv.4543	3 - To supply & install the LIGHT VALANCE - FOR CLARIFICATION OF STYLES SEE MOULDING MATRIX - LIGHT VALANCE IS NOW APPROXIMATELY 2INCHES 50MM HIGH - CLASSIC SERIES in the kitchen.	
Line 59337	Note: NO ROUGH IN WIRES ON A SEP. SWITCH OR LIGHTS HAVE BEEN PURCHASED	
6Feb20 / 13May20		

CABINETRY APPLIANCE - FRIDGE

Inv.4543	1 - To supply & install a 66CM DEEP FRIDGE ENCLOSURE - COUNTER DEPTH WITH NO WALLS - 2 66CM DEEP GABLES AND 1 66CM DEEP CABINET - THIS IS NOT A ZERO CLEARANCE ENCLOSURE. STANDARD HEIGHTS AND WIDTHS WILL BE USED. - CLASSIC SERIES.. see sketch # 1	
Line 59335	Note: See attached for fridge specs'.	
6Feb20 / 13May20                      PURCHASER HAS NOT PURCHASED THE WATER LINE ROUGH IN.		

CABINETRY BASE CABINETS

Inv.4543	1 - To supply & install the BASE PIE CUT CORNER - CLASSIC SERIES in the kitchen...see sketch #1	
Line 59336	Note:	
6Feb20 / 13May20		

CABINETRY HOOD FANS

Inv.4543	1 - To supply & install the HOOD FAN - PRO COLLECTION (SCB72230) WALL MOUNT RANGE HOOD WITH 650 CFM FAN - 30 INCH in the kitchen... see spec's	
Line 59327	Note:	
6Feb20 / 13May20		

CABINETRY MICROWAVE OVEN STOVE COOKTOP

Inv.4543	1 - To supply & install the BUILT-IN TALL APPLIANCE CABINET WITH DRAWER - S BELOW FOR PANEL-MOUNT - PROUD - OR TRIM KIT INSTALLATIONS - TRIM KIT REQUIRED - SUPPLY ALL SPECS AND INSTALLATION GUIDES - COUNTER DEPTH - CLASSIC SERIES.. see sketch # 1	
Line 59333	Note: See spec's attached. ( elec. is sold sep. )	
6Feb20 / 13May20		
Inv.4543	1 - To accomodate for a futre 30" COOKTOP CABINET WITH FALSE TOP DRAWER AND POTS AND PANS DRAWERS BELOW - SUPPLY SPECS - LAMINATE COUNTER SHOULD BE CLEAN CUT - SEE 01F - CLASSIC SERIES.. see sketch # 1	
Line 59331	Note: See spec's attached.	
6Feb20 / 13May20		

CABINETRY VANITY

**Kingsmen (Thames) Inc. / Havelock Corners (Kingsmen)**

**Lot/Unit: 12    Phase/Building: 4A    Model/Floor Plan: Arthur (4205) Elev C 4 Bed - 4+1 Bath**

Inv.4543	2 - To supply & install a LOWER DRAWER PRICE PER DRAWER CLASSIC SERIES in bedroom 4's bathroom... see sketch # 2	
Line 59342	Note:	
6Feb20 / 13May20		
Inv.4543	1 - To supply & isntall a VANITY BANK OF DRAWERS - MAX. WIDTH 55CM - CLASSIC SERIES in the master ensuite..see sketch # 2	
Line 59343	Note:	
6Feb20 / 13May20		

**COUNTER TOP - KITCHEN**

Inv.4543	1 - To accomodate the stone countertop for the future 30" cook top .... see sketch #1 See spec's attached.	
Line 59332	Note: The standard stove opening has been shifted, see sep. extra.	
6Feb20 / 13May20		

**ELECTRICAL**

Inv.4543	1 - To SUPPLY AND INSTALL AN ADDITIONAL BASIC RECEPTACLE (NOT DEDICATED) at approx. 66 " +- up from the floor centered + - to the F/P mantle	
Line 59319	Note: in the great room... see sketch # 1	
6Feb20 / 13May20                      This is for a future wall mount t.v.		
Inv.4543	1 - To SUPPLY AND INSTALL CONDUIT FOR TV OVER THE FIREPLACE – TERMINATED IN SAME ROOM have this conduit pipe at approx. 66 " +- up from the floor centered + - to the F/P mantle and terminated next to +- the std. T.V. rough in in the great room	
Line 59320	Note: See sketch # 1	
6Feb20 / 13May20                      This is for a future wall mount t.v.		
Inv.4543	1 - To supply & install the standard T.V. rough in in the great room and master bedroom... see sketch # 1 & # 2	
Line 59321	Note:	
6Feb20 / 13May20		
Inv.4543	1 - To supply & install the standard Phone rough in in the great room, master bedroom and computer niche area on the second floor... see sketch # 1 & # 2	
Line 59322	Note:	
6Feb20 / 13May20		
Inv.4543	1 - To SUPPLY AND INSTALL AN ADDITIONAL BASIC RECEPTACLE (NOT DEDICATED) next to + - the standard Phone rough in in the computer niche area.. see sketch #	
Line 59323	Note: This is over and above the standard receptacles in this area.	
6Feb20 / 13May20		
Inv.4543	1 - To SUPPLY AND INSTALL EXTRA CEILING BOX ROUGH IN CAPPED (DOES NOT INCLUDE SWITCH) over the breakfast bar area in the kitchen... see sketch # 1	
Line 59324	Note: This ceiling capped elec. will be connected to a sep. switch, switch is sold sep.	
6Feb20 / 13May20		
Inv.4543	1 - To supply & install AN ADDITIONAL SINGLE POLE SWITCH connected to the upgraded ceiling capped elec. over the breakfast bar in the kitchen.	
Line 59325	Note:	
6Feb20 / 13May20		

Kingsmen (Thames) Inc. / Havelock Corners (Kingsmen)

Lot/Unit: 12    Phase/Building: 4A    Model/Floor Plan: Arthur (4205) Elev C 4 Bed - 4+1 Bath

Inv.4543	1 - To SUPPLY AND INSTALL EXTRA 240 STOVE PLUG for the future built in micro/oven in the kitchen... see spec's	
Line 59334	Note:	
6Feb20 / 13May20		

HEATING AND AIR CONDITIONING

MISCELLANEOUS

Inv.4543	1 - Open up area next to W.I.C. in the master bedroom and install four wood shelves, area will be finished and painted....see sketch # 2	
Line 59329	Note:	
6Feb20 / 13May20		
Inv.4543	1 - Shift standard stove opening by approx. 4" + - towards the corner and relocate the standard bank of drawers in the kitchen... see sketch # 1	
Line 59330	Note:	
6Feb20 / 13May20		

PLUMBING

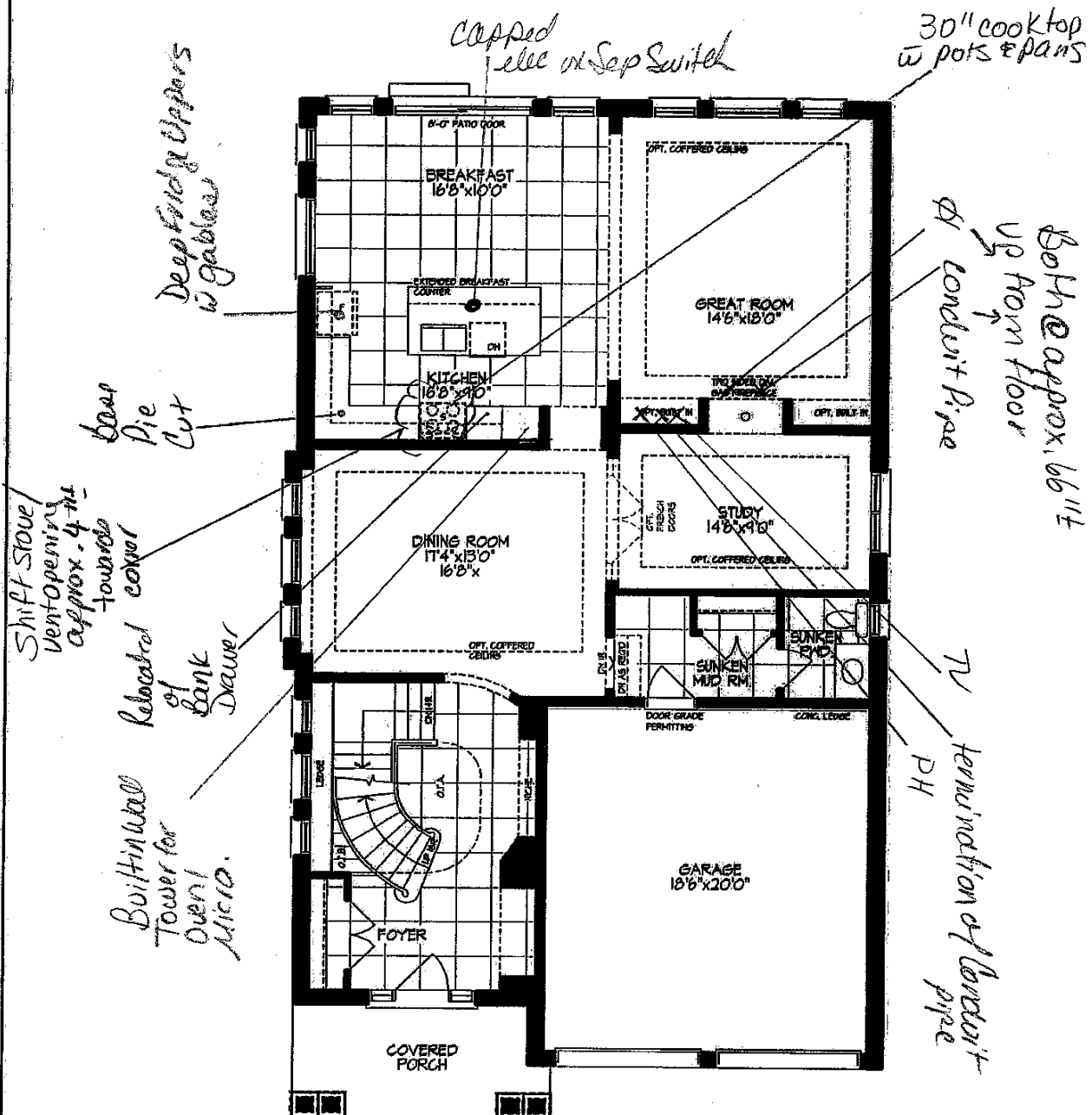
Inv.4543	1 - To supply & install the PLUMBING EXTRAS - SHOWER STALL (IN LIEU OF STANDARD 5 FOOT TUB) in bedroom 4's bathroom... see sketch # 2	
Line 59316	Note: This includes a shower light	
6Feb20 / 13May20                      NO GLASS PANNEL OR DOOR HAS BEEN PURCHASED		
Inv.4543	1 - To supply & install the MIROLIN " BROOKE" free standing tub in the master ensuite in lieu of the standard free standing tub in the master ensuite... see spec's	
Line 59318	Note:	
6Feb20 / 13May20		
Inv.4543	1 - To supply & install a hot water rough in with shut off valve next to the cold water supply behind toilet in the master ensuite...	
Line 59326	Note:	
6Feb20 / 13May20		

EXTRAS AS PER OFFER

VENDOR TO INSTALL CAPPED GAS LINE (ROUGH-IN ONLY) AT REAR OF HOME FOR FUTURE BBQ LOCATION. LOCATION TO BE FINALIZED AT VENDORS SOLE DISCRETION. <i>Worksheet</i> Note:	
VENDOR TO INSTALL GAS LINE (ROUGH-IN ONLY) TO KITCHEN IN AT STOVE LOCATION (AS PER PLAN) TO INCLUDE 110V CODE REQUIREMENT. <i>Worksheet</i> Note:	
VENDOR TO SUPPLY & INSTALL AIR CONDITIONING UNIT, SIZED ACCORDINGLY, FROM VENDORS STANDARD SAMPLES. <i>Worksheet</i> Note:	
Vendor to include wrought iron pickets in lieu of included standard oak pickets. Purchaser to select from Builders Standard Level 1 iron pickets. <i>Worksheet</i> Note:	

Schedule B-1  
Sketch #1

1 of 3



**KINGSIIEN**  
GROUP INC.

→ SEE ATTACHED FOR SIGNATURES

→ SEE ATTACHED FOR SIGNATURES



Unit 4205 - El. C1  
ARTHUR - CORNER

LOT 12 Phase 4A

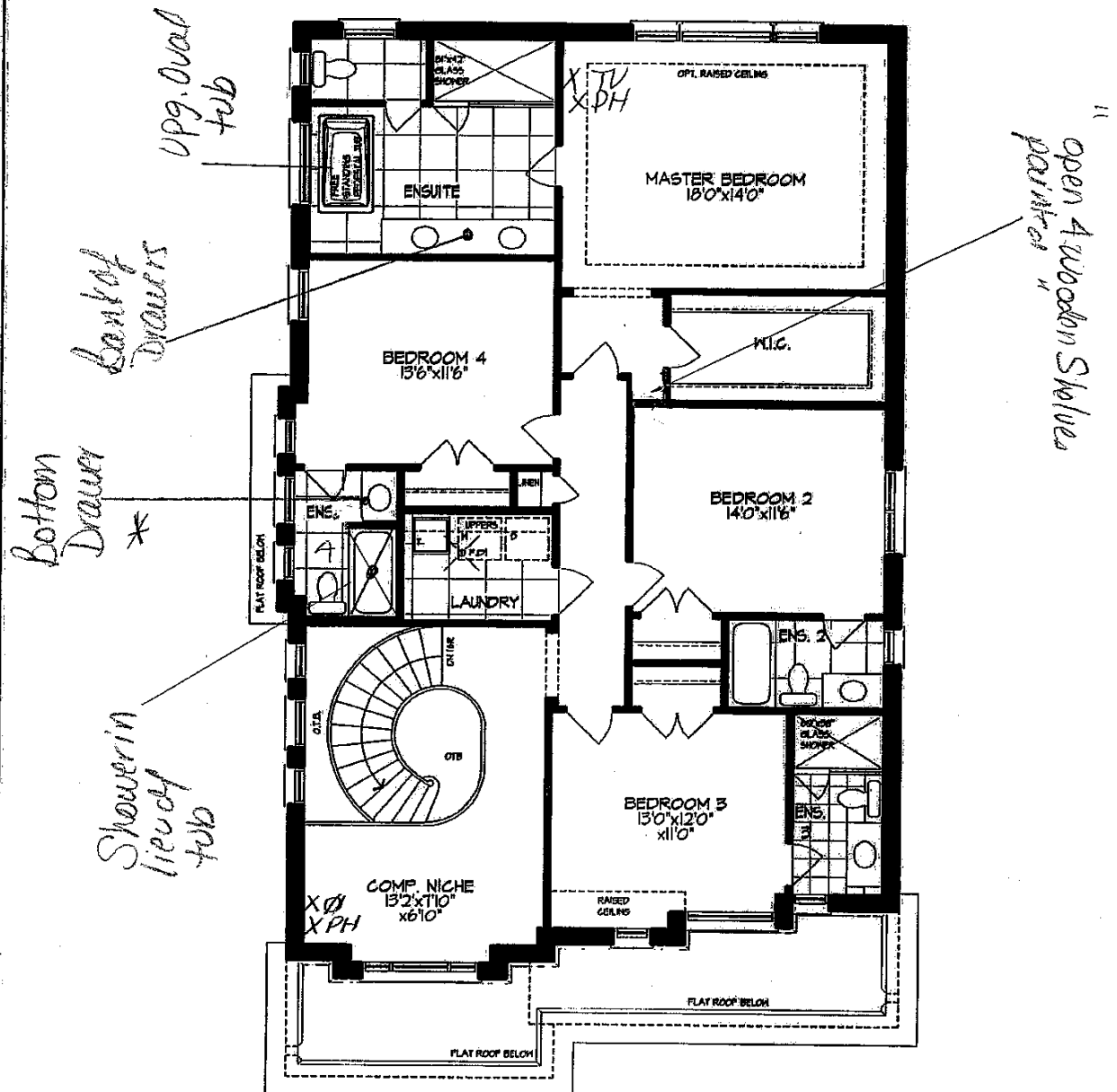
Materials, specifications, and floor plans are subject to change without notice.  
All renderings are artist conceptions. All floor plans are approximate dimensions.  
Actual usable floor space may vary from the stated floor area, E. & E.O.

SC

KL

Schedule B-1  
Sketch #2

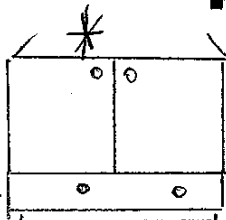
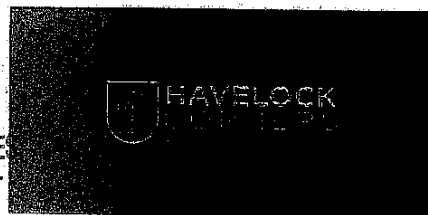
2 of 3



**KINGSIIEN**  
GROUP INC.

→ SEE ATTACHED FOR SIGNATURE

→ SEE ATTACHED FOR SIGNATURE



Bottom Drawer  
Not to Scale

Unit 4205 - El. C1  
ARTHUR - CORNER

Lot 12 Phase 4A

Materials, specifications, and floor plans are subject to change without notice.  
All renderings are artist conceptions. All floor plans are approximate dimensions.  
Actual usable floor space may vary from the stated floor area. E. & E.O.

2

KK

LOT: 12 Thames PH: 4A  
RE: UPG. FreeStanding ToB FOR MASTER ENS.

→ SEE ATTACHED FOR SIGNATURES  
→ SEE ATTACHED FOR SIGNATURES



Brooke™ | 1

## Brooke™

Categories: Acrylic Freestanding

### DESCRIPTION

68" Freestanding Bath  
SKU #: CF2002

### FEATURES

- Installation friendly two piece design
- Accepts deck mounted faucet
- Includes a chrome integral pop up drain and rectangular overflow
- ~~Brooke includes a drain and overflow~~
- Centre drain
- Includes levelling feet
- Available in White Only



### DIMENSIONS

68" x 36" x 23"

## OPTIONS & ACCESSORIES

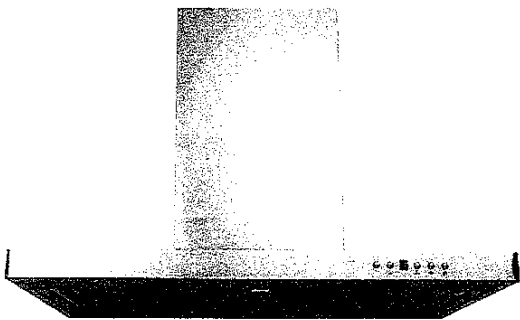
### SOAKER

CF2002

LOT: 12 Thomas PH:4A  
RE: UPG. 30" Chimney Hood Fan

Specifications

Air Flow Volume: 650 CFM  
Electrical Connection: 120V/60Hz  
Power Consumption: 240 Watts  
Current: 2.0 Amps  
Fan Speed: 1599 RPM  
Finishes: Stainless Steel  
Duct: 6" Round  
Knock-out: 6" Round - Top Only  
Dimensions: Width: 30"/36"  
Height: 44 1/2"  
Depth: 19 3/4"  
Noise Level: Min. 2 Sones  
Max. 7 Sones



SCB722 - Baffle Filter



Ordering Model Chart

Model	Colour	Knock-out	Duct	Size	Filter	CFM
SCB72230	Stainless Steel	6"	6" Round	30"	Baffle	650
<del>SCB72236</del>	<del>Stainless Steel</del>	<del>6"</del>	<del>6" Round</del>	<del>36"</del>	<del>Baffle</del>	<del>850</del>

Notes

→ SEE ATTACHED FOR SIGNATURES  
→ SEE ATTACHED FOR SIGNATURES

\_\_\_\_\_

\_\_\_\_\_

\_\_\_\_\_

\_\_\_\_\_

\_\_\_\_\_

\_\_\_\_\_



LOT: 12 Thames PH: 4A  
RE: UPG. 30" CookTOP SPEC'S

## 30" Electric Cooktop

Benchmark® Series - Black with Stainless Steel Frame NETP068SUC



SEE ATTACHED FOR SIGNATURES

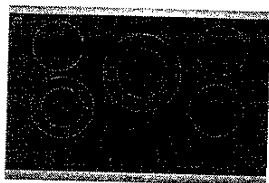


SEE ATTACHED FOR SIGNATURES



**BOSCH**

Invented for life



**NETP068SUC**  
Black with Stainless  
Steel Frame

The Benchmark® series electric cooktop is sleek in design, and features AutoChef® technology which maintains precise cooking temperatures.

### Features & Benefits

Five element cooktop features a 3,600 Watt dual-zone center element.

AutoChef® maintains exact cooking temperatures for consistent results.

Each zone's timer automatically shuts off when cooking is done.

SpeedBoost® offers shorter heat-up times for liquids.

PreciseSelect® offers 17 different direct cooking level settings.

### Element Performance

Power of Front Left heating element	2,000 / 800 W
Power of Back Left heating element	1,200 W
Power of Center heating element	3,600 / 1,400 W
Power of Back Right heating element	1,200 W
Power of Front Right heating element	1,500 W

### Element Size

Dimension of Front Left heating element	7", 5"
Dimension of Back Left heating element	6"
Dimension of Center heating element	9", 6"
Dimension of Back Right heating element	6"
Dimension of Front Right heating element	7"

### Technical Details

Watts	9,000 W
Circuit breaker	40 A
Volts	208-240 V
Frequency	60 Hz
Plug type	No plug
Energy source	Electric

### Dimensions & Weight

Overall appliance dimensions (HxWxD)	1/4" + 4" x 31" x 21 1/4"
Required cutout size (HxWxD)	4" x 28 7/8" x 20"
Minimum distance from counter front	2 1/4"
Minimum distance from rear wall	2"
Net weight	32 lbs

### Accessories—Optional



**HEZ390210**  
8" AutoChef® pan



**HEZ390220**  
9" AutoChef® pan



**HEZ390230**  
10" AutoChef® pan



For help and assistance with Bosch accessories please call 1-800-944-2904 Mon-Fri 8am to 6pm EST

Notes: All height, width and depth dimensions are shown in inches. BSH reserves the absolute and unrestricted right to change product materials and specifications, at any time, without notice. Consult the product's installation instructions for final dimensional data and other details prior to making cutout. Applicable product warranty can be found in accompanying product literature or you may contact your account manager for further details.

Warranties: Bosch warrants that the Product is free from defects in materials and workmanship for a period of three hundred and sixty-five (365) days from the date of purchase. The foregoing timeline begins to run upon the date of purchase, and shall not be stalled, tolled, extended, or suspended, for any reason whatsoever. This Product is also warranted to be free from cosmetic defects in material and workmanship (such as scratches of stainless steel, paint/porcelain blemishes, chip, dents, or other damage) to the finish of the Product, for a period of thirty (30) days from the date of purchase or closing date for new construction. This cosmetic warranty excludes slight color variations due to inherent differences in painted and porcelain parts, as well as differences caused by kitchen lighting, product location, or other similar factors. This cosmetic warranty specifically excludes any discolored floor "As Is" or "B" stock appliances.

For more information on our active line of products...



Lot: 12 Thomas PH: 4A  
RE: UPG. 30" COOKTOP SPEC'S Con't

## 30" Electric Cooktop

Benchmark® Series - Black with Stainless Steel Frame NETP068SUC

SEE ATTACHED FOR SIGNATURES



SEE ATTACHED FOR SIGNATURES



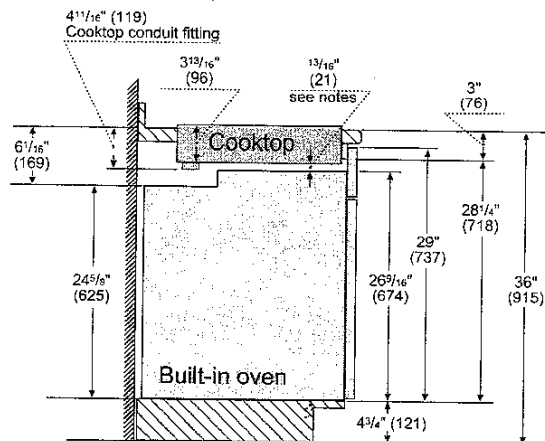
**BOSCH**

Invented for life

### Installation Details

#### Installation above Wall Ovens

30" Built-in oven – under electric cooktop

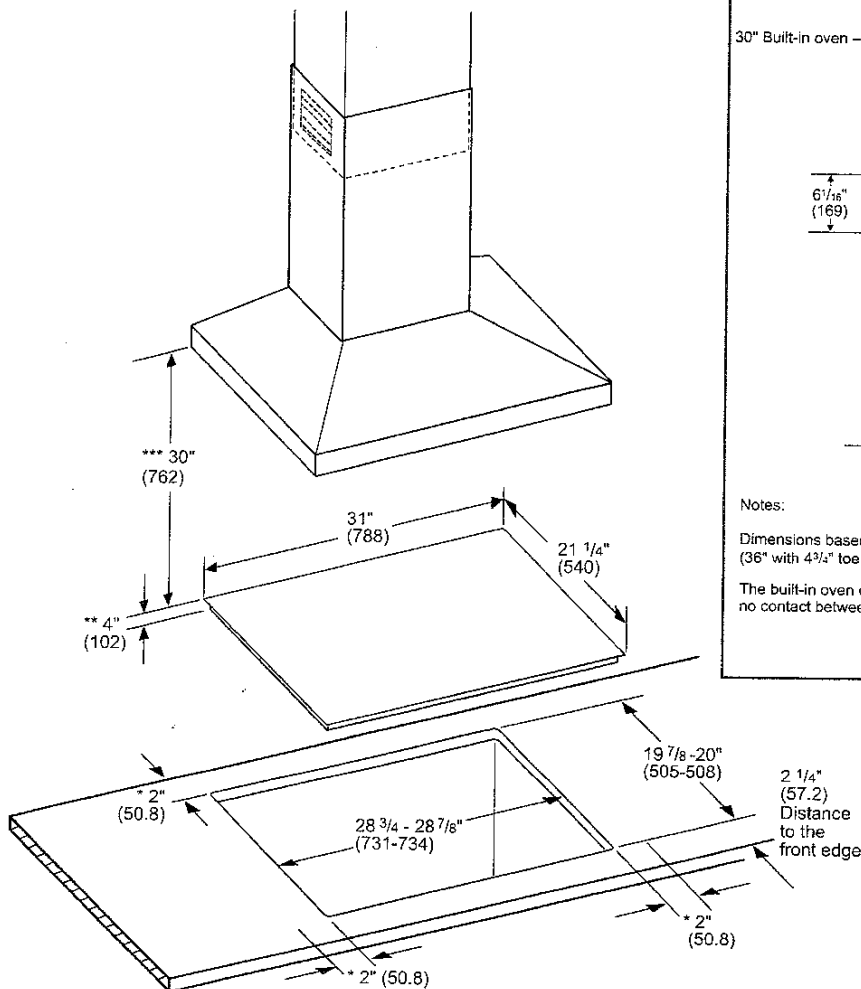


Notes:

Dimensions based on standard countertop height (36" with 4 3/4" toe kick including base plate).

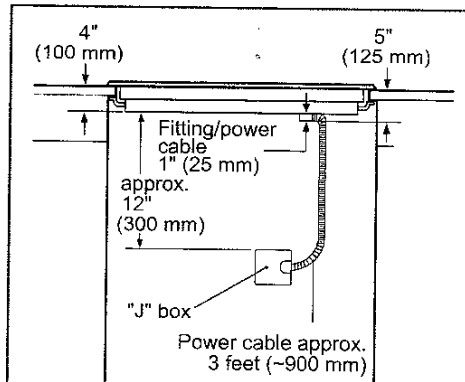
The built-in oven can be installed below the electric cooktop as long as there is no contact between the bottom of the cooktop and the top of the oven.

measurements in inches (mm)



- \* Minimum distance from the cooktop cutout to the wall
- \*\* Maximum cutout depth
- \*\*\* Minimum distance between the cooktop surface and lower edge of the exhaust hood.

Dimensions in inches (mm)



measurement in inches (mm)

For help and assistance with Bosch accessories please call 1-800-944-2904 Mon-Fri 8am to 6pm EST

Notes: All height, width and depth dimensions are shown in inches. BSH reserves the absolute and unrestricted right to change product materials and specifications, at any time, without notice. Consult the product's installation instructions for final dimensional data and other details prior to making cutout. Applicable product warranty can be found in accompanying product literature or you may contact your account manager for further details.

Warranties: Bosch warrants that the Product is free from defects in materials and workmanship for a period of three hundred and sixty-five (365) days from the date of purchase. The foregoing timeline begins to run upon the date of purchase, and shall not be stalled, tolled, extended, or suspended, for any reason whatsoever. This Product is also warranted to be free from cosmetic defects in material and workmanship (such as scratches of stainless steel, paint/porcelain blemishes, chip, dents, or other damage) to the finish of the Product, for a period of thirty (30) days from the date of purchase or closing date for new construction. This cosmetic warranty excludes slight color variations due to inherent differences in painted and porcelain parts, as well as differences caused by kitchen lighting, product location, or other similar factors. This cosmetic warranty specifically excludes any display, floor, "As Is", or "B" stock appliances.

For more information on our entire line of products, go to [www.bosch-home.ca](http://www.bosch-home.ca) or call 1-800-944-2904

LOT: 12 Thomas PH:4A

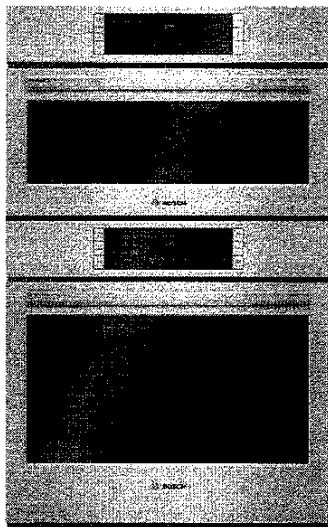
RE: BUILT-IN WALL OVEN / MICRO SPECS

→ SEE ATTACHED FOR SIGNATURES

→ SEE ATTACHED FOR SIGNATURES



### 800 Series, 30", Stainless steel HBL87M53UC



#### Included accessories

1 x oven racks /lower  
1 x temperature probe /lower

#### Optional accessories

HEZTR301 : Telescopic Oven Rack 30"

### Bosch microwave combination ovens create an all-in-one cooking center with an upper microwave and a Genuine European Convection oven below

- With capacities of 1.6 cu. ft upper microwave and 4.6 cu. ft. lower oven allows enough space to cook everyday meals or for a crowd
- 10 convenient automatic sensor cooking programs to simplify cooking for great results every time
- 10 power levels with 950 watts of microwavable power provides quick and convenient cooking
- Lower oven's convection multi-rack mode gives uniform baking results even when using all 3 racks simultaneously
- Download Bosch Home Connect application and control the lower wall oven with your smart phone or tablet

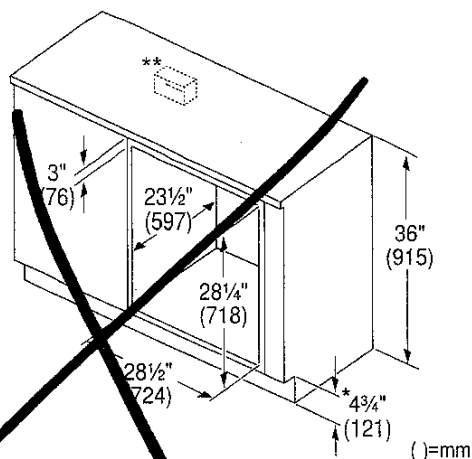
#### Technical Data

Cooking mode :	Microwave
Cooking method second cavity :	
3rd element convection, Convection Bake, Convection Broil, Convection Roast, Dough proving setting, Pizza setting, Small area grill, Top/bottom heating, Top heating, 1/3 bottom heat., Variable small-area grill, Warming	
Integrated Cleaning system :	No
Number of interior lights :	1
Included accessories :	
1 x oven racks /lower, 1 x temperature probe /lower	
Bake Element Wattages cavity 1 (W) :	600
Broil Element Wattages cavity 1 (W) :	1750
Convection Element Wattages cavity 1 (W) :	1700
Microwave Wattages (W) :	1000
UPC code :	825225960164
Product color :	Stainless steel
Energy source :	Electric
Watts (W) :	7975
Current (A) :	40
Volts (V) :	208-240
Frequency (Hz) :	60
Approval certificates :	CSA
Power cord length (in) :	50"
Power cord length (cm) :	127
Appliance Dimensions (h x w x d) (cm) :	124.4 x 75.5 x 62.2
Required cutout size (HxWxD) (in) :	48 5/8" x 28 1/2" x 23 1/2"
Overall appliance dimensions (HxWxD) (in) :	49" x 29 3/4" x 24 1/2"
Overall appliance dimensions (HxWxD) (mm) :	1244 x 755 x 622
Product packaging dimensions (HxWxD) (in) :	55 3/4" x 34" x 31 1/2"
Product packaging dimensions (HxWxD) (mm) :	1441 x 787 x 863
Net weight (lbs) :	328
Net weight (kg) :	148.768
Gross weight (lbs) :	328

Lot: 12 Thames PH:4A  
 RE: UPG. WALL OVEN/MICRO. SPEC'S CONT

→ SEE ATTACHED FOR SIGNATURES  
 → SEE ATTACHED FOR SIGNATURES

#### Under-Counter Installation



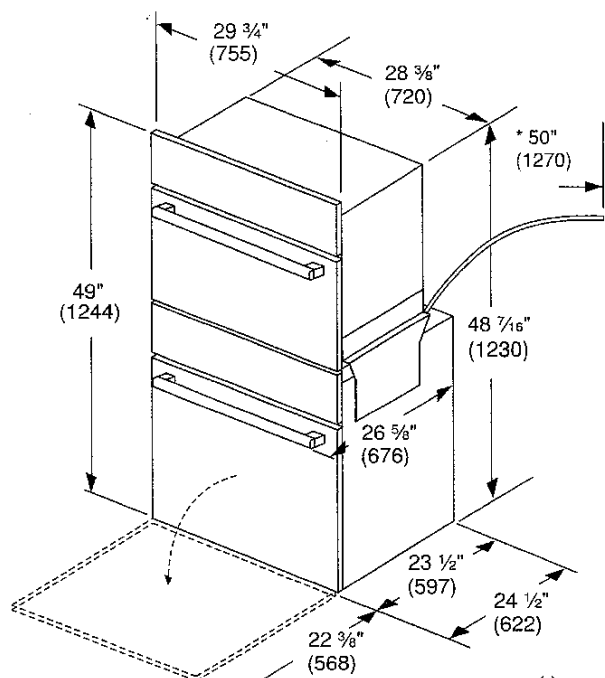
\* Includes  $\frac{3}{4}$ " (19 mm) base plate.

\*\*For single ovens installed under a cabinet, the junction box should be located to the right or left of the unit within range of the power cord.

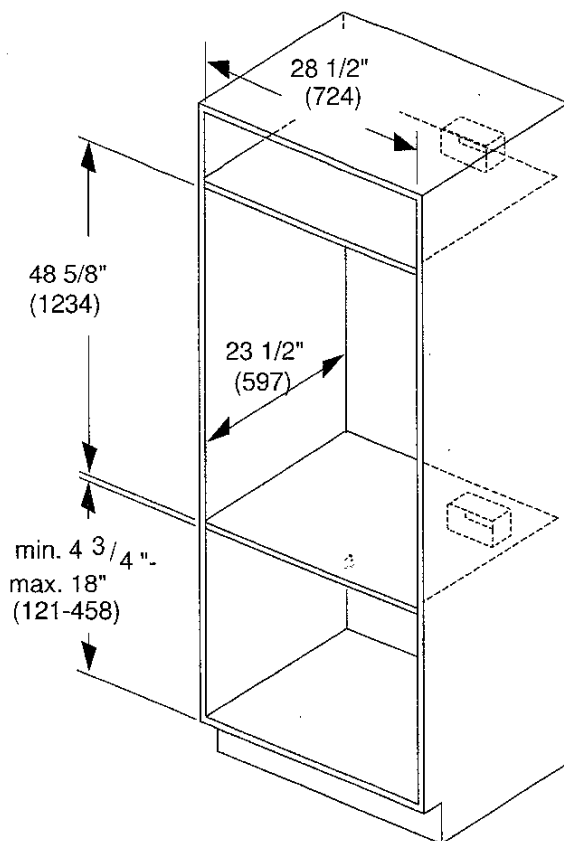
#### Dimensions for Combination Oven Units

The cabinet base must be flat and capable of supporting the weight of the combination oven up to 429 lbs (195 kg).

#### Combination Oven Appliance Dimensions



#### Combination Oven Traditional Installation



**Note:** Junction box may be installed above, below, to the left or to the right of the unit within reach of the power cord.

Lot: 12 Thomas PH: 4A  
RE: FRIDGE SPEC'S  
\* NO R/I WATERLINE PURCHASED \*

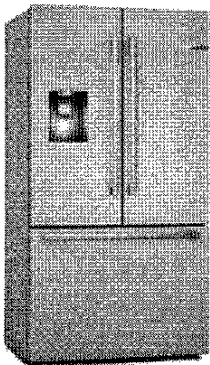
36" Counter-Depth 3-Door Refrigerator

500 Series – Stainless Steel B36CD50SNS



SEE ATTACHED FOR SIGNATURES

SEE ATTACHED FOR SIGNATURES



B36CD50SNS  
Stainless Steel

Also available in:  
Black Stainless Steel  
B36CD50SNB

Introducing the  
QuickIcePro System™,  
industry's fastest  
refrigerator ice maker.<sup>1</sup>  
Enjoy freshly filtered ice  
that's replenished fast.

Features & Benefits

The Bosch QuickIcePro System offers rapid ice replenishment, producing up to 12 lbs of ice per day,<sup>2</sup> ensuring ample ice availability.

UltraClarityPro™ water filter reduces >99.9% of sediment that may be found in your water and ice, including harsh elements like chlorine and chloramine.

With Home Connect™, remotely control and monitor your appliance to efficiently manage your day.

<sup>1</sup>Based on single ice maker production rates during a 24-hour period, measured per IEC standard and manufacturer user's manuals, for brands identified in US and Canada TraQline as freestanding French door bottom mount refrigerators. Results may vary depending on operating conditions.  
<sup>2</sup>Based on filling 8 oz glasses.  
<sup>3</sup>When leveling legs are fully extended, add 5/8" to overall height, total 70 5/8".  
<sup>4</sup>The cutout depth of 25" includes the required 1" airflow. The electrical covers on the back of unit do not require additional depth.

Accessories: To purchase Bosch accessories, cleaners & parts please visit [www.bosch-home.com/us/store](http://www.bosch-home.com/us/store) or call 1-800-644-2964 (Mon to Fri 9 am to 6 pm PST, Sat 9 am to 3 pm PST).  
Notes: All height, width and depth dimensions are shown in inches. BSH reserves the absolute and unrestricted right to change product materials and specifications, at any time, without notice. Consult the product's installation instructions for final dimensional data and other details prior to making cutouts.

Warranties: Please see Use & Care manual or Bosch website for statement of limited warranty.  
For more information on our entire line of products, go to [www.bosch-home.com/us](http://www.bosch-home.com/us) or call 1-800-944-2964  
© BSH Home Appliances Corporation. All rights reserved. Bosch is a registered trademark of Robert Bosch GmbH.

Capacity	
Total capacity (cu. ft.)	20.8
Refrigerator capacity (cu. ft.)	14.8
Freezer capacity (cu. ft.)	6
Technical Details	
Current (A)	15 A
Volts (V)	115 V
Frequency (Hz)	60 Hz
Power cord length (in.)	91
Plug type	120V-3 prong
Dimensions & Weight	
Appliance dimensions with hinges, handles and doors (HxWxD) (in.)	70" x 35 5/8" x 31 1/8"
Appliance dimensions without hinges and doors (HxWxD) (in.)	69 1/2" x 35 5/8" x 24"
Appliance dimensions with hinges and doors, no handles (HxWxD) (in.)	70" x 35 5/8" x 28 3/4"
Required cutout size (HxWxD) (in.)	70" x 36" x 25"
Net weight (lbs)	350 lbs
Efficiency	
Energy consumption (kWh/yr)	570
ENERGY STAR® qualified	Yes – Tier 1



Lot: 12 Thames PH: 4A  
RE: FRIDGE SPEC'S CONT  
\* NO WATERLINE R/I PURCHASED \*



SEE ATTACHED FOR SIGNATURES



SEE ATTACHED FOR SIGNATURES

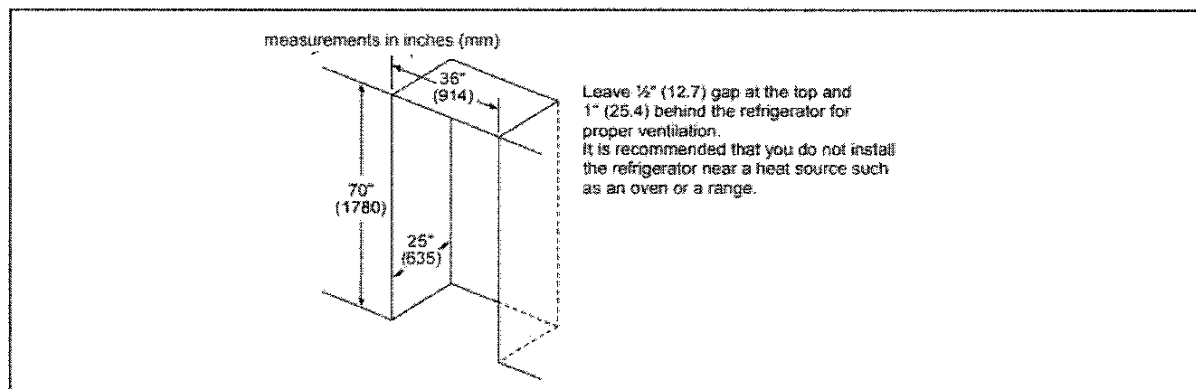
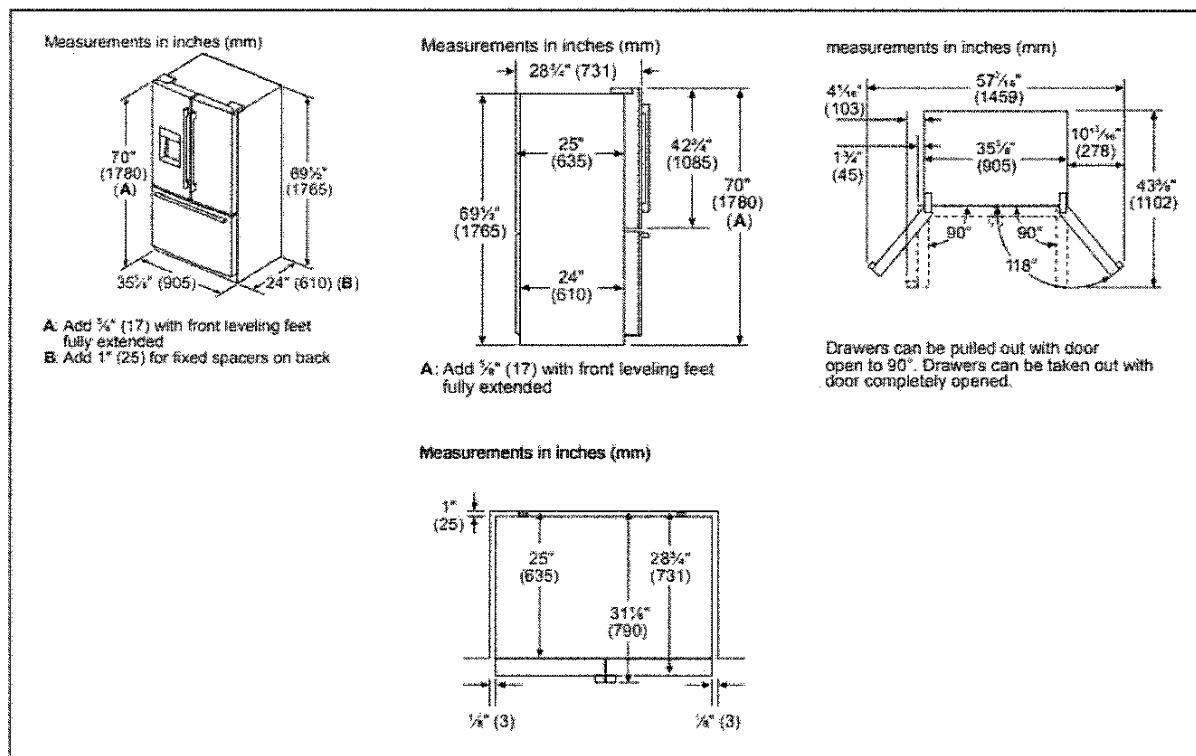
## 36" Counter-Depth 3-Door Refrigerator

800 Series – Stainless Steel B36CD50SNS



**BOSCH**  
Invented for life

### Installation Details



**Accessories:** To purchase Bosch accessories, cleaners & parts please visit [www.bosch-home.com/us/stores](http://www.bosch-home.com/us/stores) or call 1-800-944-2904 (Mon to Fri 9 am to 6 pm PST, Sat 9 am to 3 pm PST).

**Notes:** All height, width and depth dimensions are shown in inches. BSH reserves the absolute and unrestricted right to change product materials and specifications, at any time, without notice. Consult the product's installation instructions for final dimensional data and other details prior to making cutout.

**Warranties:** Please see Use & Care manual or Bosch website for statement of limited warranty.

For more information on our entire line of products, go to [www.bosch-home.com/us](http://www.bosch-home.com/us) or call 1-800-944-2904

© BSH Home Appliances Corporation. All rights reserved. Bosch is a registered trademark of Robert Bosch GmbH.