

Kingsmen (Thames) Inc. / Havelock Corners (Kingsmen)

Lot/Unit: 82 Phase/Building: 4A Model/Floor Plan: Spencer (4204) Elev C 4 Bed - 4+1 Bath

CABINETRY MICROWAVE OVEN STOVE COOKTOP

Inv.4631	1 - To accomodate for a future SLIDE-IN STOVE PREP FOR GRANITE - SUPPLY SPECS - CLASSIC SERIES... see spec's attached.	
Line 59155	Note:	
5May20 / 14May20		
Inv.4631	1 - To supply & install WALL CABINET WITH SHELF FOR MICROWAVE - FINISHED INTERIOR - OPENING 24INCHESW X 13 3 - 4INCHESH X 17INCHESD - CLASSIC SERIES in the kitchen... see sketch # 1	
Line 59165	Note: The elec. outlet for this upgrade is sold sep.	
5May20 / 14May20		

CABINETRY VANITY

Inv.4631	1 - To supply & install the VANITY BANK OF DRAWERS - MAX. WIDTH 55CM - CLASSIC SERIES in the master ensuite... see sketch # 2	
Line 59168	Note:	
5May20 / 14May20		
Inv.4631	2 - To supply & install a LOWER DRAWER PRICE PER DRAWER - CLASSIC SERIES in Bedroom #2's bathroom... see sketch # 2	
Line 59169	Note:	
5May20 / 14May20		
Inv.4631	2 - To supply & install a LOWER DRAWER PRICE PER DRAWER - CLASSIC SERIES in Bedroon #3's bathroom... see sketch # 2	
Line 59170	Note:	
5May20 / 14May20		
Inv.4631	2 - To supply & install a LOWER DRAWER PRICE PER DRAWER - CLASSIC SERIES in Bedroon #4's bathroom... see sketch # 2	
Line 59171	Note:	
5May20 / 14May20		

COUNTER TOP

Inv.4631	1 - To accomodate for a future 30" slide in stove in the kitchen... see spec's attached	
Line 59156	Note:	
5May20 / 14May20		

ELECTRICAL

Inv.4631	1 - To supply & install the standard T.V. rough in in the great room and master bedroom... see sketch # 1 & # 2	
Line 59157	Note:	
5May20 / 14May20		
Inv.4631	1 - To supply & install the standard Phone rough in in the great room, master bedroom and Media room on the second floor...see sketch # 1 & # 2	
Line 59158	Note:	
5May20 / 14May20		
Inv.4631	1 - To SUPPLY AND INSTALL AN ADDITIONAL BASIC RECEPTACLE (NOT DEDICATED) at approx. 66 " + - up from the floor centered + - to the F/P in the great room..	
Line 59160	Note: next to + - the upgraded conduit pipe in... see sketch # 1	
5May20 / 14May20		This is for a future wall mount T.V.

Kingsmen (Thames) Inc. / Havelock Corners (Kingsmen)

Lot/Unit: 82 Phase/Building: 4A Model/Floor Plan: Spencer (4204) Elev C 4 Bed - 4+1 Bath

Inv. 4631 Line 59161 5May20 / 14May20	1 - To SUPPLY AND INSTALL CONDUIT FOR TV OVER THE FIREPLACE – TERMINATED IN SAME ROOM.. have the conduit pipe installed at approx. 66 " + - up from the floor and terminated next to + - the std. T.V. and Phone rough in in the great room...see sketch # 1 Note: This is for a future wall mount T.V.	
Inv. 4631 Line 59164 5May20 / 14May20	1 - Relocate the standard ceiling light from the upper stair landing to the O.T.B. area on the second floor... see sketch # 2 Note:	
Inv. 4631 Line 59166 5May20 / 14May20	1 - To SUPPLY AND INSTALL MICROWAVE PLUG (DEDICATED CIRCUIT AND INCLUDES ARC FAULT BREAKER) to be installed where microwave shelf is in the kitchen... see sketch # 1 Note: This upgrade is mandatory when upgrading to the micro. shelf.	

HEATING AND AIR CONDITIONING

Inv. 4631 Line 59153 5May20 / 14May20	1 - To supply & install the Humidifier to the furnace... Note:	
---	--	--

MISCELLANEOUS

Inv. 4631 Line 59152 5May20 / 14May20	1 - To supply & install the side door entrance see sketch # 1 Note:	
---	--	--

PLUMBING

Inv. 4631 Line 59154 5May20 / 14May20	1 - To supply & install the WATERLINE ROUGH-IN TO THE FRIDGE LOCATION (NO HOOK UP) in the kitchen. Note:	
---	--	--

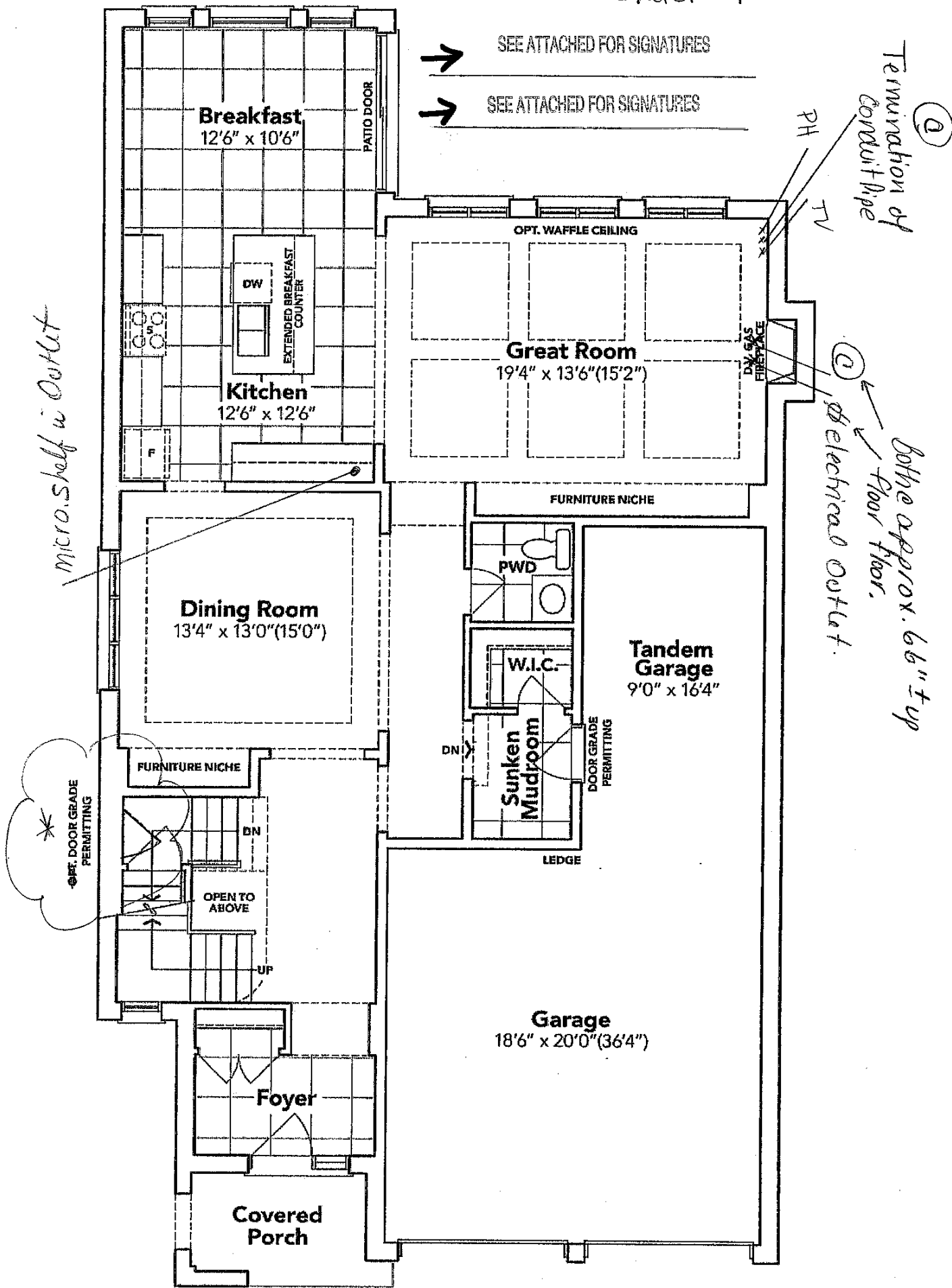
EXTRAS AS PER OFFER

VENDOR TO INSTALL CAPPED GAS LINE (ROUGH-IN ONLY) AT REAR OF HOME FOR FUTURE BBQ LOCATION. LOCATION TO BE FINALIZED AT VENDORS SOLE DISCRETION. <i>Worksheet</i> Note:	
VENDOR TO INSTALL GAS LINE (ROUGH-IN ONLY) TO KITCHEN IN AT STOVE LOCATION (AS PER PLAN) TO INCLUDE 110V CODE REQUIREMENT. <i>Worksheet</i> Note:	
VENDOR TO SUPPLY & INSTALL AIR CONDITIONING UNIT, SIZED ACCORDINGLY, FROM VENDORS STANDARD SAMPLES. <i>Worksheet</i> Note:	
Vendor to convert vestibule to bedroom3 into a closet and move the entry to Bedroom 3 over as per plan and as per Sketch. <i>Worksheet</i> Note:	

SCHEDULE "B-1"
Floor Plan

Lot 82
Phase 4A
Model: Spencer (4204) Elev C 4 Bed - 4+1 Bath
Standard

Sketch #1



GROUND FLOOR EL. C

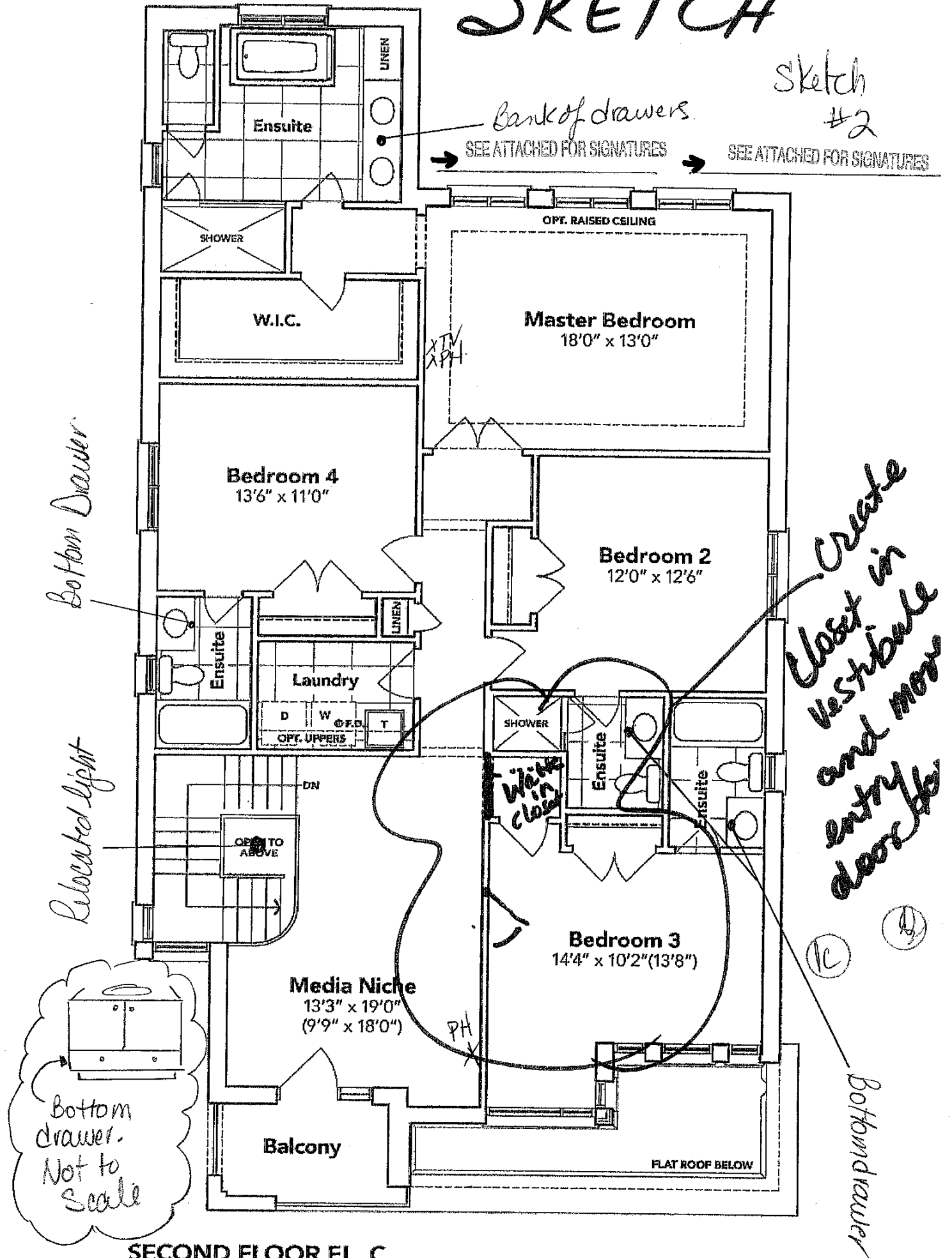
The floor plans and elevations shown are pre-construction plans and may be revised or improved as necessitated by architectural controls and the construction process. The measurements adhere to the rules and regulations of the TARION Warranty Corporation's official method for the calculation of floor area. Materials, specifications and floor plans are subject to change without notice. All house renderings are artist's concept only. Actual usable floor space may vary from the stated floor area. All options shown are upgrades. E. & O. E.

SCHEDULE "B-1"
Floor Plan

LOI 02
Phase 4A
Model: Spencer (4204) Elev C 4 Bed - 4+1 Bath
Standard

SKETCH

Sketch #2



SECOND FLOOR EL. C

The floor plans and elevations shown are pre-construction plans and may be revised or improved as necessitated by architectural controls and the construction process. The measurements adhere to the rules and regulations of the TARION Warranty Corporation's official method for the calculation of floor area. Materials, specifications and floor plans are subject to change without notice. All house renderings are artist's concept only. Actual usable floor space may vary from the stated floor area. All options shown are upgrades. E. & O. E.

Lot: 82 Thames PH: 4A

Samsung 30 inch 5.8 cu. ft. Gas Range with 18K Dual
Power Burner in stainless steel NX58K9500WG

Re: Gas Spool Spec's



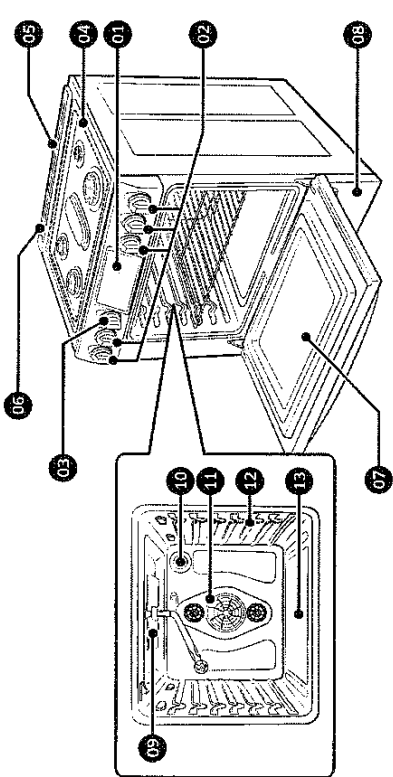
SEE ATTACHED FOR SIGNATURES



SEE ATTACHED FOR SIGNATURES



Gas range components



- 01 Touch display

02 Surface burner knobs (5 pcs)

03 Warming drawer knob (1 pc)

04 Surface burners

05 Oven vent

06 Cooling vent

07 Door

08 Warming drawer

09 Broil oven burner

10 Oven light

11 Convection fan / Convection heater

12 Oven rack system

13 Bake oven burner

Gas range specifications

MODEL NX58H9950W*

DESCRIPTION	Gas Slide-in Range
OVERALL DIMENSIONS	29 15/16" (W) x 36 1/4" (H) x 28 1/8" (D)
NET WEIGHT	231 lb (104.5 Kg)
ELECTRICAL	Refer to the rating label.
GAS, NG (NATURAL GAS)	5-13 in WC
GAS, LP (LIQUID PROPANE)	10-13 in WC
SURFACE BURNERS (NG)	(LF)-15,000 BTU / (LR)-9,500 BTU / (CTR)-9,500 BTU / (RR)-5,000 BTU / (RF)-19,000 BTU
SURFACE BURNERS (LP)	(LF)-11,500 BTU / (LR)-7,500 BTU / (CTR)-7,500 BTU / (RR)-4,000 BTU / (RF)-14,500 BTU
OVEN BURNERS (NG)	Broil (Upper)-16,500 BTU / Bake (Lower)-18,000 BTU
OVEN BURNERS (LP)	Broil (Upper)-11,500 BTU / Bake (Lower)-15,000 BTU

MODEL NX58H9500W*/NX58K9500W*

DESCRIPTION	Gas Slide-in Range
OVERALL DIMENSIONS	29 15/16" (W) x 36 1/4" (H) x 28 1/8" (D)
NET WEIGHT	225 lb (102.0 Kg)
ELECTRICAL	Refer to the rating label.
GAS, NG (NATURAL GAS)	5-13 in WC
GAS, LP (LIQUID PROPANE)	10-13 in WC
SURFACE BURNERS (NG)	(LF)-15,000 BTU / (LR)-9,500 BTU / (CTR)-9,500 BTU / (RR)-5,000 BTU / (RF)-18,000 BTU
SURFACE BURNERS (LP)	(LF)-11,500 BTU / (LR)-7,500 BTU / (CTR)-7,500 BTU / (RR)-4,000 BTU / (RF)-14,500 BTU
OVEN BURNERS (NG)	Broil (Upper)-16,500 BTU / Bake (Lower)-18,000 BTU
OVEN BURNERS (LP)	Broil (Upper)-11,500 BTU / Bake (Lower)-15,000 BTU



SEE ATTACHED FOR SIGNATURES



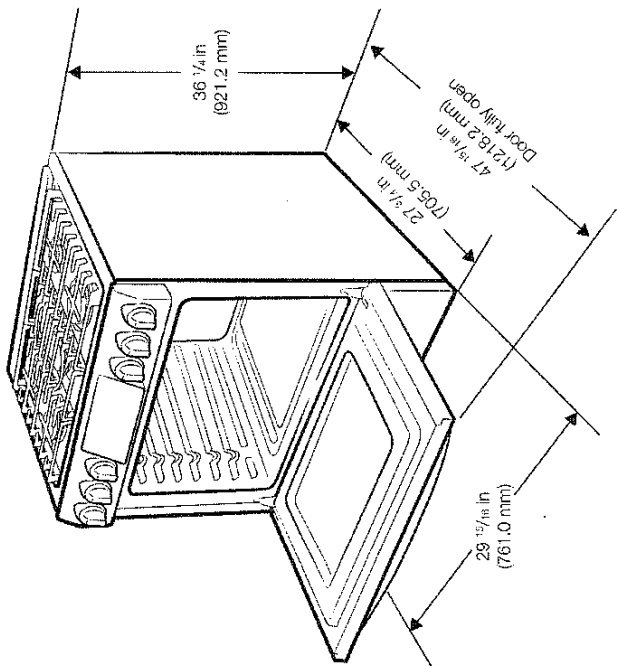
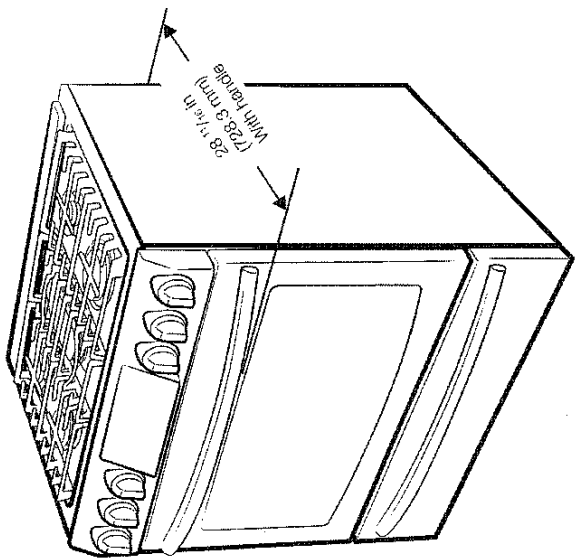
SEE ATTACHED FOR SIGNATURES

Gas range components

Lot: 82 Thames Ph:4A
RE: 30" Gas Stove Spec's CONT

→ SEE ATTACHED FOR SIGNATURES

→ SEE ATTACHED FOR SIGNATURES



Installation requirements

Location requirements

Clearances and dimensions

NOTE

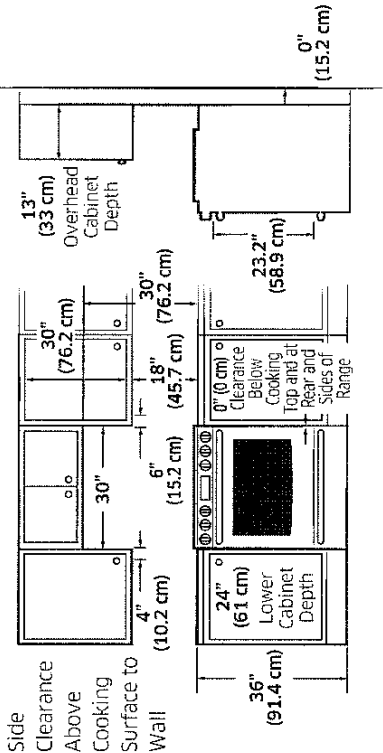
For OTR over Gas Stove, please follow local GAS CODE.

BEFORE YOU BEGIN to install this appliance, refer to the following information, dimensions, and clearances. Do not locate the range where it may be subject to strong drafts. Provide adequate clearances between the range and adjacent combustible surfaces. These dimensions must be met for safe use of the range. The location of the electrical outlet and gas piping may be adjusted to meet the following dimensions and clearances.

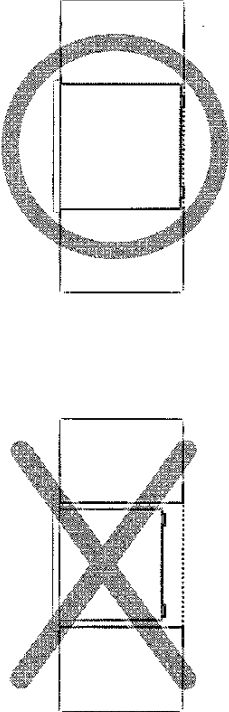
For installation in Canada, a free-standing range is not to be installed closer than 4.7" (12 cm) from any adjacent surface.

CAUTION

This range has been designed to comply with the maximum allowable wood cabinet temperature of 194 °F (90 °C). Make sure the wall covering, countertops, and cabinets around the range can withstand the heat (up to 194 °F [90 °C]) generated by the range. If not, discoloration, delamination, or melting may occur.



IMPORTANT: MAKE SURE the unit is supported by the leveling legs and NOT by the cooktop itself.



SEE ATTACHED FOR SIGNATURES

LOT: 82 Thomas PH: 4A
RE: 30" Gas Stove SPEL'S CONT

Installation requirements