

**Kingsmen (Thames) Inc. / Havelock Corners (Kingsmen)**

**Lot/Unit: 62    Phase/Building: 4A    Model/Floor Plan: Andrew (3603) Elev C 4 Bed - 2+1 Bath**

**CABINETRY BASE CABINETS**

Inv.4628	1 - To supply & install teh POTS & PANS DRAWER - MINIMUM 60 CM - MAXIMUM 90 CM - SIZE SUBJECT TO FLOOR PLAN -    VIKING SERIES in the kitchen... see sketch # 1	
Line 59104	Note:	
30Apr20 / 7May20		

**CABINETRY MICROWAVE OVEN STOVE COOKTOP**

Inv.4628	1 - To supply & install the WALL CABINET WITH SHELF FOR MICROWAVE - FINISHED INTERIOR - OPENING 24INCHESW X 13 3 - 4INCHESH X 17INCHESD - VIKING SERIES in the kitchen... see sketch # 1	
Line 59102	Note: Elec. outlet is sold sep. and is madatory with this upgrade.	
30Apr20 / 7May20		

**CABINETRY VANITY**

Inv.4628	1 - To supply & install the VANITY BANK OF DRAWERS - MAX. WIDTH 55CM - VIKING SERIES in the master ensuite... see sketch # 2	
Line 59106	Note:	
30Apr20 / 7May20		
Inv.4628	2 - To supply & install two VANITY TOP DRAWERS-- VIKING SERIES in the main bathroom... see sketch # 2	
Line 59107	Note:	
30Apr20 / 7May20		

**COUNTER TOP**

Inv.4628	1 - As per schedule "PE": Vendor to include level 1, 2cm granite or quartz in all bathrooms, and level 1, 3cm granite or quartz in the kitchen, as per plan, in lieu of the included laminate counter tops. Selections to be made from builders standard samples	
Line 59092	Note:	
30Apr20 / 7May20		

**ELECTRICAL**

Inv.4628	1 - To supply & install the standard T.V. rough in in the great room and master bedroom... see sketch # 1 & # 2	
Line 59095	Note:	
30Apr20 / 7May20		
Inv.4628	1 - To supply & install the standard Phone rough in in the kitchen, master bedroom and bedroom # 4...see sketch # 1 & # 2	
Line 59096	Note:	
30Apr20 / 7May20		
Inv.4628	1 - To SUPPLY AND INSTALL EXTRA CEILING BOX ROUGH IN CAPPED (DOES NOT INCLUDE SWITCH) over the breakfast bar area in the kitchen... see sketch # 1	
Line 59097	Note: This capped ceiling elec. will be connected to a sep. switch, switch sold sep.	
30Apr20 / 7May20		
Inv.4628	1 - To supply & install AN ADDITIONAL SINGLE POLE SWITCH connected to the upgraded capped ceiling elec. over the breakfast bar in the kitchen.	
Line 59098	Note:	
30Apr20 / 7May20		

**Kingsmen (Thames) Inc. / Havelock Corners (Kingsmen)**

**Lot/Unit: 62    Phase/Building: 4A    Model/Floor Plan: Andrew (3603) Elev C 4 Bed - 2+1 Bath**

Inv.4628	1 - Relocate the std. ceiling light over the upper stair landing to the O.T.B. area on the second floor...see sketch # 2	
Line 59099	Note:	
30Apr20 / 7May20		
Inv.4628	1 - Reinforce the relocated light at the O.T.B. area on the second floor...see sketch # 2	
Line 59100	Note:	
30Apr20 / 7May20		
Inv.4628	1 - To SUPPLY AND INSTALL MICROWAVE PLUG (DEDICATED CIRCUIT AND INCLUDES ARC FAULT BREAKER) to be installed where upgraded microwave shelf is in the kitchen... see sketch # 1	
Line 59103	Note: Micro. shelf is sold sep.	
30Apr20 / 7May20		
Inv.4628	1 - To SUPPLY AND INSTALL AN ADDITIONAL BASIC RECEPTACLE (NOT DEDICATED) at approx. 66 " + - up from the floor centered + - to the F/P mantle..	
Line 59217	Note: in the great room... see sketch # 1	
30Apr20 / 7May20                      This is for a future wall mount T.V.		
Inv.4628	1 - To SUPPLY AND INSTALL CONDUIT FOR TV OVER THE FIREPLACE – TERMINATED IN SAME ROOM have the conduit pipe installed at approx. 66 " + - up from the floor centered + - to the F/P in the great room and terminated next to + - the std. T.V. rough in i	
Line 59218	Note: in the great room... see sketch # 1	
30Apr20 / 7May20                      This is for a future wall mount T.V.		

**FIREPLACE**

Inv.4628	1 - To supply & install the FIREPLACE SUROUND - ONE SIDED FIREPLACE - 3 PIECE 5 INCH MARBLE SURROUND to the fireplace in the great room...	
Line 59108	Note: Colour selection for this upgrade will be made during the interior finishing appointment.	
30Apr20 / 7May20		
Inv.4628	1 - To supply & install the FIREPLACE HEARTH - ONE SIDED FIREPLACE - MARBLE HEARTH for the fireplace in the great room.	
Line 59109	Note: Colour selection for this upgrade will be made during the interior finishing appointment.	
30Apr20 / 7May20		

**HARDWOOD**

**HEATING AND AIR CONDITIONING**

Inv.4628	1 - To supply & install the humidifier to the furnace...	
Line 59094	Note:	
30Apr20 / 7May20		



CONSTRUCTION SUMMARY

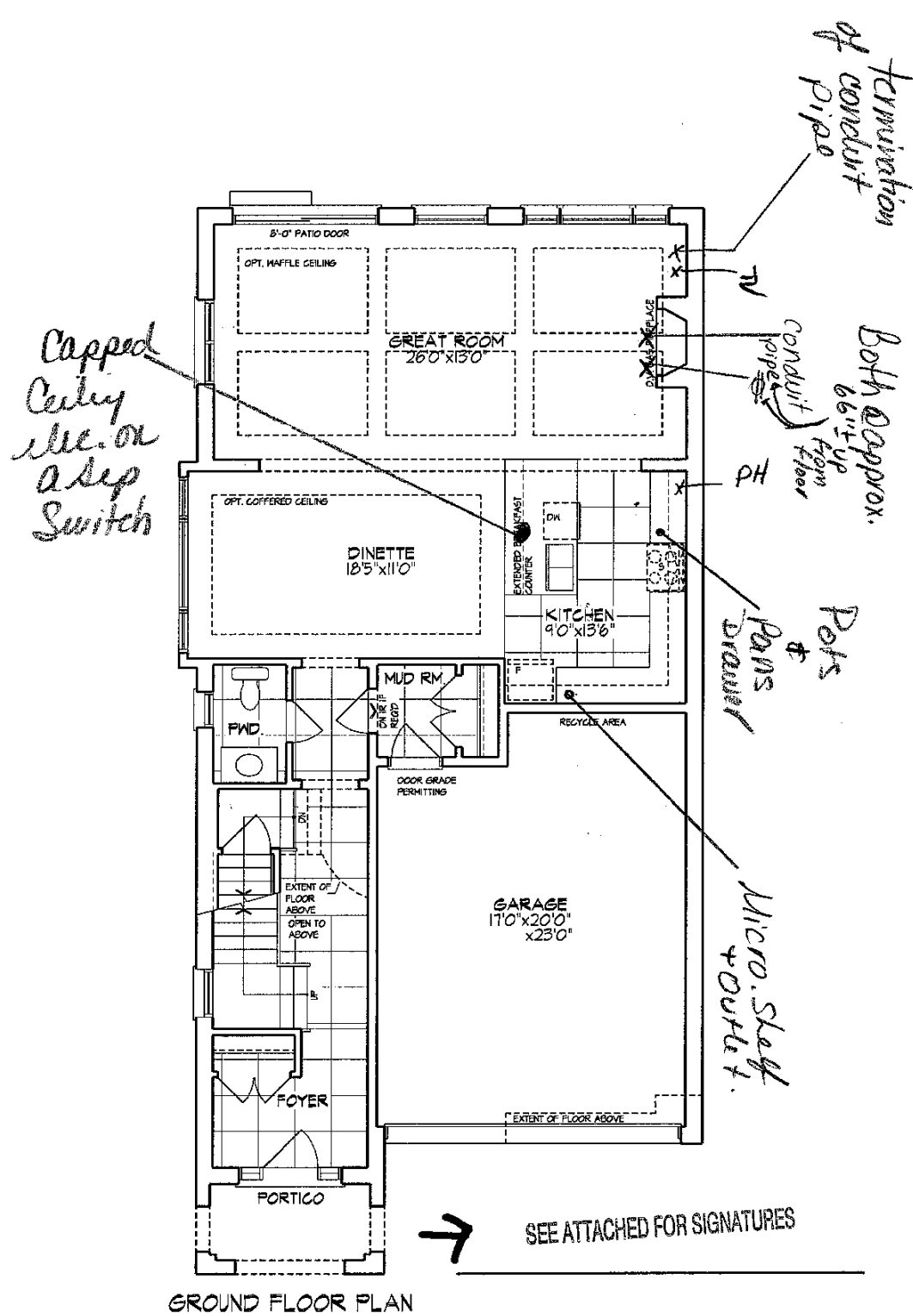
Kingsmen (Thames) Inc. / Havelock Corners (Kingsmen)

Lot/Unit: 62    Phase/Building: 4A    Model/Floor Plan: Andrew (3603) Elev C 4 Bed - 2+1 Bath

EXTRAS AS PER OFFER

VENDOR TO INSTALL CAPPED GAS LINE (ROUGH-IN ONLY) AT REAR OF HOME FOR FUTURE BBQ LOCATION. LOCATION TO BE FINALIZED AT VENDORS SOLE DISCRETION. <i>Worksheet</i> Note:	
VENDOR TO SUPPLY & INSTALL AIR CONDITIONING UNIT, SIZED ACCORDINGLY, FROM VENDORS STANDARD SAMPLES. <i>Worksheet</i> Note:	
VENDOR TO INCLUDE BUILDERS STANDARD, ENGINEERED FLOORING IN NATURAL STAIN AS PER SCHEDULE A, THROUGHOUT THE SECOND FLOOR IN LIEU OF INCLUDED CARPET, AS PER PLAN <i>Worksheet</i> Note:	

LOT : 62 Thames PH: 4A  
Sketch #1

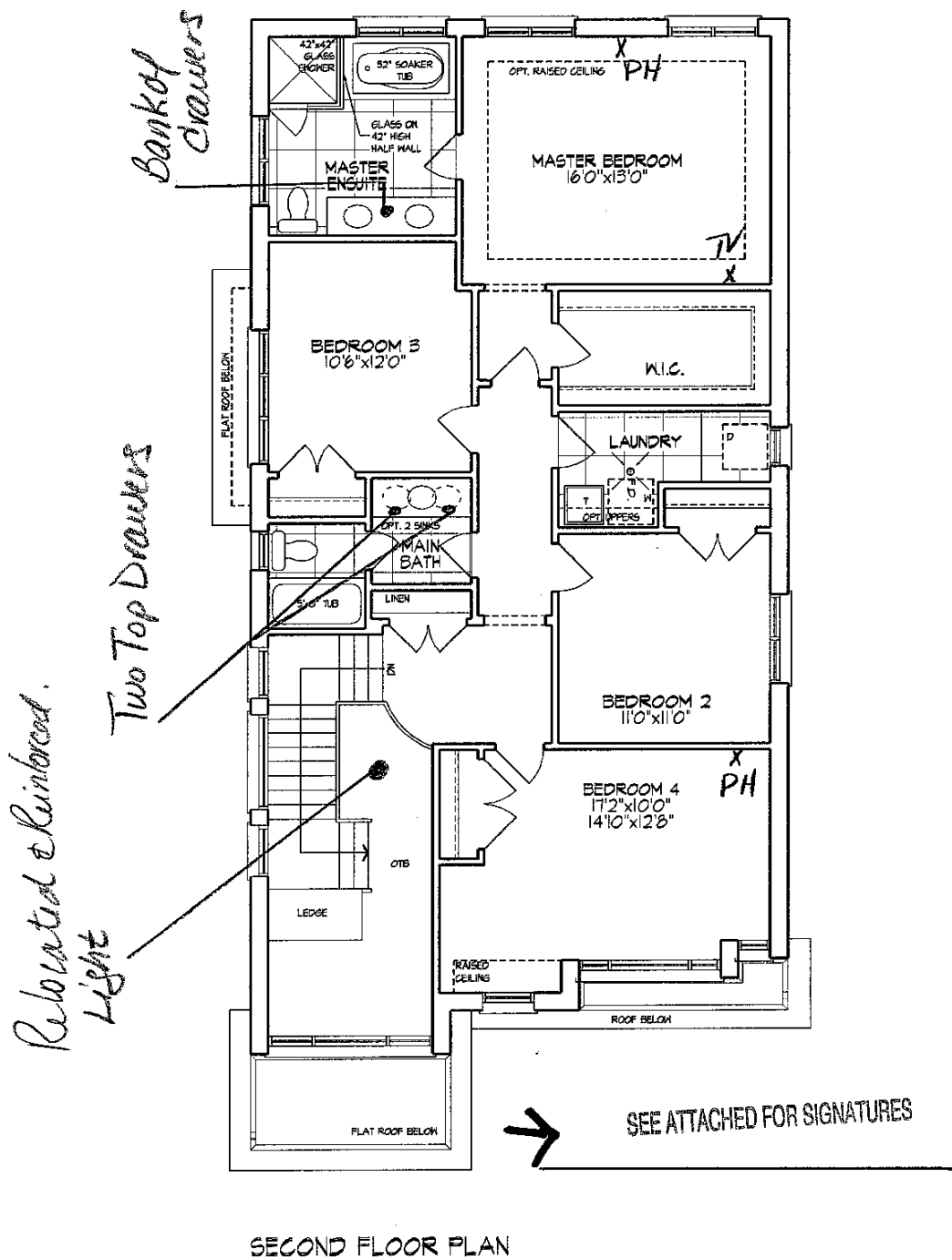


GROUND FLOOR PLAN

Unit 3603 - El. C  
ANDREW - CORNER  
2414 sq. ft.

Materials, specifications, and floor plans are subject to change without notice.  
All renderings are artist conceptions. All floor plans are approximate dimensions.  
Actual usable floor space may vary from the stated floor area. E. & E.O.

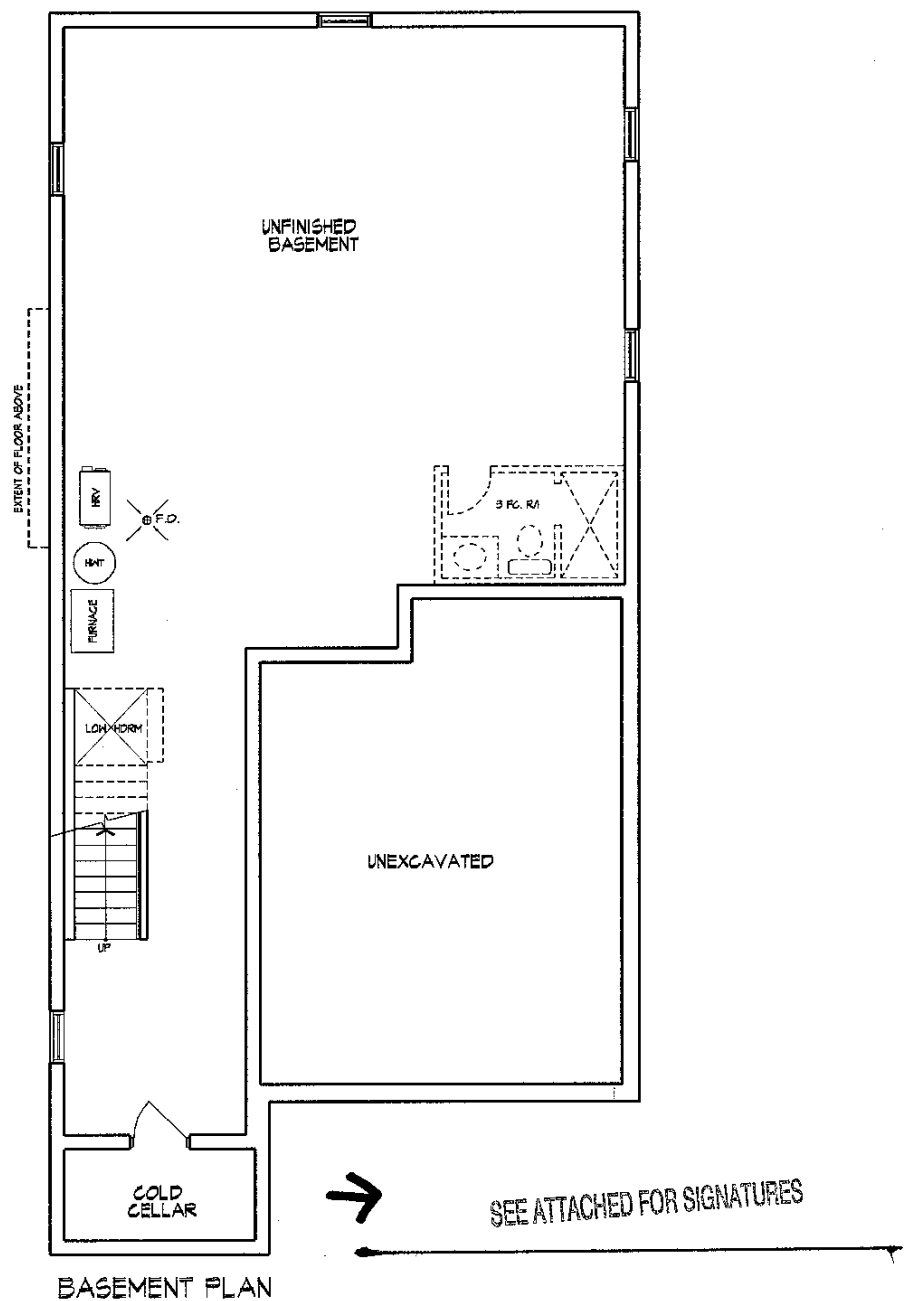
LOT: 62 Thames PH: 4A  
Sketch #2



Unit 3603 - El. C  
ANDREW - CORNER  
2414 sq. ft.

Materials, specifications, and floor plans are subject to change without notice.  
All renderings are artist conceptions. All floor plans are approximate dimensions.  
Actual usable floor space may vary from the stated floor area. E. & E.O.

LOT: 62 Thames PH: 4A



Unit 3603 - El. C  
ANDREW - CORNER  
2414 sq. ft.

Materials, specifications, and floor plans are subject to change without notice.  
All renderings are artist conceptions. All floor plans are approximate dimensions.  
Actual usable floor space may vary from the stated floor area. E. & E.O.

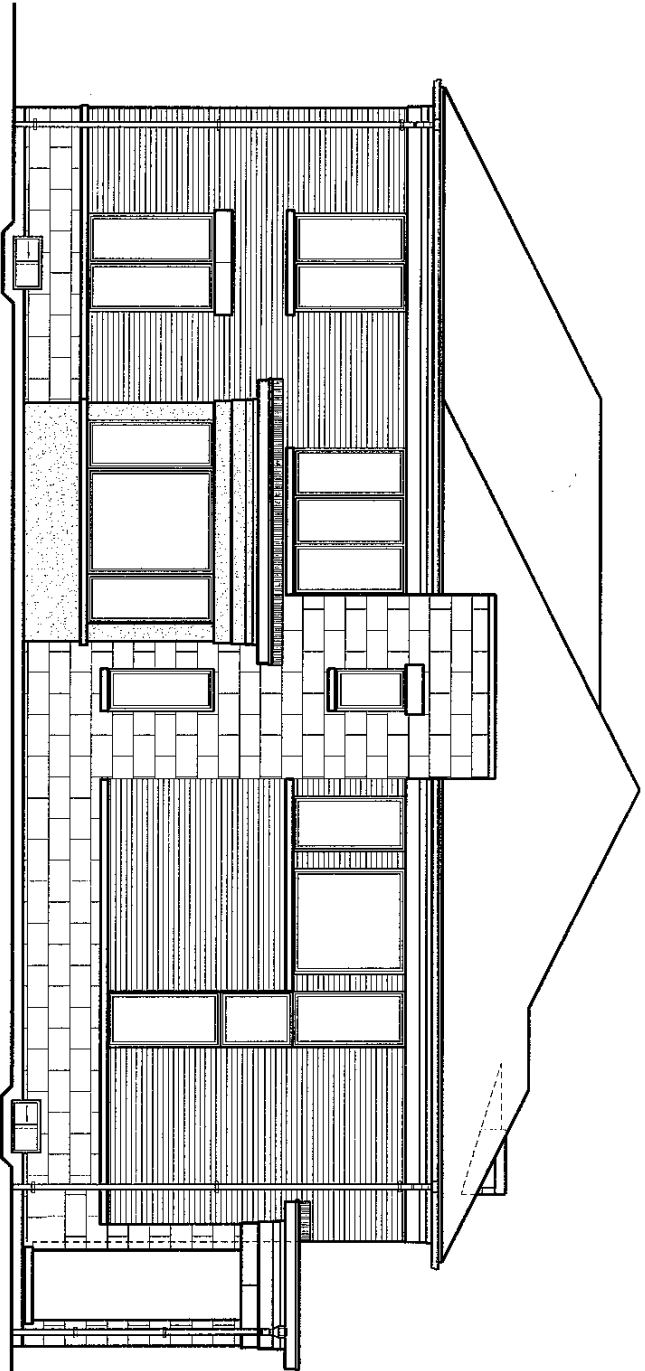
Lot: 62 Thames

PH: 4A.

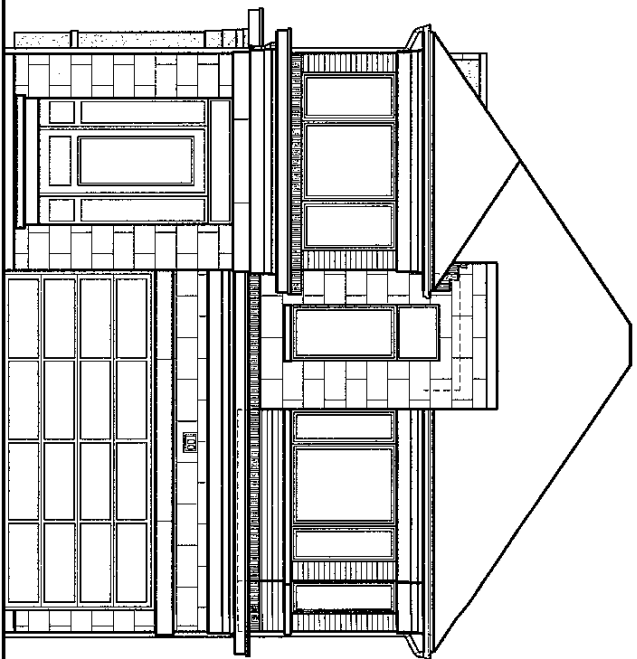


SEE ATTACHED FOR SIGNATURES

FLANKAGE ELEVATION 'C'



FRONT ELEVATION 'C'



Unit 3603 - E1. C  
ANDREW - CORNER

2414 sq. ft.

Materials, specifications, and floor plans are subject to change without notice.  
All renderings are artist conceptions. All floor plans are approximate dimensions.  
Actual usable floor space may vary from the stated floor area. E. & E.O.