

Kingsmen (Thames) Inc. / Havelock Corners (Kingsmen)

Lot/Unit: 51 Phase/Building: 4A Model/Floor Plan: Spencer (4204) Elev C 4 Bed - 4+1 Bath

CABINETRY

Inv. 4614 Line 58998 22Apr20 / 30Apr20	1 - See attached for fridge spec's Note: 	
--	--	--

CABINETRY VANITY

Inv. 4614 Line 58911 22Apr20 / 30Apr20	1 - To supply & install a VANITY BANK OF DRAWERS - MAX. WIDTH 55CM - CLASSIC SERIES in the master ensuite ... see sketch # 2 Note: 	
--	--	--

CABINETRY WALL AND HUTCH

Inv. 4614 Line 58910 22Apr20 / 30Apr20	2 - To supply & install TWO COMBO - SINGLE-DOOR CABINET WITH - 1 GLASS DOOR AND FINISHED INTERIOR - SPECIFY CLEAR - FROSTED - SMOKED GLASS - CLASSIC SERIES.. see sketch # 2 Note: 	
--	--	--

ELECTRICAL

Inv. 4614 Line 58992 22Apr20 / 30Apr20	4 - To supply & install FOUR LED pot lights in the DINING room... see sketch # 1 Note: These four pot lights will be connected to a sep. switch, switch is sold sep. 	
Inv. 4614 Line 58993 22Apr20 / 30Apr20	1 - To supply & install AN ADDITIONAL SINGLE POLE SWITCH connected to the upgraded four pot lights in the dining rooms. Note: 	
Inv. 4614 Line 58995 22Apr20 / 30Apr20	2 - To supply & install TWO LED pot lights in the foyer area... see sketch # 1 Note: Do not supply or install the standard light in the foyer, leave switch, have switch connected to these two pot lights. 	
Inv. 4614 Line 58996 22Apr20 / 30Apr20	3 - To supply & install three LED pot lights to the main floor hallway at staircase area... see sketch # 1 Note: DO NOT SUPPLY & THE STANDARD LIGHTS TO THE MAIN FLOOR HALLWAY LEAVE SWITCH(S) HAVE THE SWITCH(s) CONNECTED TO THESE UPGRADED. THREE POT LIGHTS. 	
Inv. 4614 Line 58997 22Apr20 / 30Apr20	4 - To supply & install FOUR LED pot lights to the main hallway between dining room and mud/powder room area...see sketch # 1 Note: DO NOT SUPPLY & THE STANDARD LIGHTS TO THE MAIN FLOOR HALLWAY LEAVE SWITCH(S) HAVE THE SWITCH(s) CONNECTED TO THESE UPGRADED FOUR POT LIGHTS. 	
Inv. 4614 Line 58894 22Apr20 / 30Apr20	1 - To supply & install the standard T.V. rough in in the great room and master bedroom... see sketch #1 & # 2 Note: 	
Inv. 4614 Line 58895 22Apr20 / 30Apr20	1 - To supply & install the standard Phone rough in in the kitchen, great room and master bedroom... see sketch # 1 & # 2 Note: 	

Kingsmen (Thames) Inc. / Havelock Corners (Kingsmen)

Lot/Unit: 51 Phase/Building: 4A Model/Floor Plan: Spencer (4204) Elev C 4 Bed - 4+1 Bath

<div>Inv.4614</div> <div>Line 58896</div> <div>22Apr20 / 30Apr20</div>	<div>1 - To SUPPLY AND INSTALL AN ADDITIONAL BASIC RECEPTACLE (NOT DEDICATED) at approx. 66 " + - up from the floor centered + - to the F/P mantle</div> <div>Note: in the great room... see sketch # 1</div> <div>this is for a future wall mount T.V.</div>	
<div>Inv.4614</div> <div>Line 58897</div> <div>22Apr20 / 30Apr20</div>	<div>1 - To SUPPLY AND INSTALL CONDUIT FOR TV OVER THE FIREPLACE – TERMINATED IN SAME ROOM at approx. 66 " +- up from the floor centered + - to the F/P mantle in the great room.. see sketch # 1</div> <div>Note: this is for a future wall mount T.V.</div>	
<div>Inv.4614</div> <div>Line 58898</div> <div>22Apr20 / 30Apr20</div>	<div>1 - To supply & install a rough in TELEPHONE in the media room on the second floor... see sketch # 2</div> <div>Note:</div>	
<div>Inv.4614</div> <div>Line 58899</div> <div>22Apr20 / 30Apr20</div>	<div>1 - To supply & install a RG6 CABLE rough in in the media room on the second floor... see sketch # 2</div> <div>Note:</div>	
<div>Inv.4614</div> <div>Line 58900</div> <div>22Apr20 / 30Apr20</div>	<div>2 - To SUPPLY AND INSTALL BOX ROUGH IN CAPPED (DOES NOT INCLUDE SWITCH) for future wall sconces at the F/P in the great room... see sketch # 1</div> <div>Note: These two rough in's will be connected to a sep. switch, switch is sold sep.</div>	
<div>Inv.4614</div> <div>Line 58901</div> <div>22Apr20 / 30Apr20</div>	<div>1 - To supply & install an ADDITIONAL SINGLE POLE SWITCH connected to the capped rough in's for future wall sconces at the F/P in the great room...</div> <div>Note:</div>	
<div>Inv.4614</div> <div>Line 58902</div> <div>22Apr20 / 30Apr20</div>	<div>6 - To supply & install SIX LED pot lights in the great room... see sketch # 1</div> <div>Note: These six pot lights will be connected to a sep. switch, switch is sold sep.</div> <div>STILL TO INSTALL THE STD. CEILING LIGHT IN THE GREAT ROOM.</div>	
<div>Inv.4614</div> <div>Line 58903</div> <div>22Apr20 / 30Apr20</div>	<div>1 - To supply & install an ADDITIONAL SINGLE POLE SWITCH connected to the upgraded SIX LED pot lights in the great room..</div> <div>Note:</div>	
<div>Inv.4614</div> <div>Line 58904</div> <div>22Apr20 / 30Apr20</div>	<div>1 - Reinforce the std. ceiling light in the dining room... see sketch # 1</div> <div>Note:</div>	
<div>Inv.4614</div> <div>Line 58905</div> <div>22Apr20 / 30Apr20</div>	<div>1 - Relocate the standard ceiling light in the kitchen over to the Breakfast bar... see sketch # 1</div> <div>Note: Still connected to the std. switch</div>	
<div>Inv.4614</div> <div>Line 58906</div> <div>22Apr20 / 30Apr20</div>	<div>5 - To supply & install FIVE LED pot lights in the kitchen... see sketch # 1</div> <div>Note: These five LED pot lights will be connected to a sep. switch, switch is sold sep.</div>	
<div>Inv.4614</div> <div>Line 58907</div> <div>22Apr20 / 30Apr20</div>	<div>1 - To supply & install an ADDITIONAL SINGLE POLE SWITCH connected to the upgrade FIVE LED pot lights in the kitchen.</div> <div>Note:</div>	

Kingsmen (Thames) Inc. / Havelock Corners (Kingsmen)

Lot/Unit: 51 Phase/Building: 4A Model/Floor Plan: Spencer (4204) Elev C 4 Bed - 4+1 Bath

Inv.4614	1 - Relocate the standard ceiling light from the upper stair landing to the O.T.B. area on the second floor... see sketch # 2	
Line 58908	Note:	
22Apr20 / 30Apr20		
Inv.4614	1 - Reinforce the relocated light at the O.T.B. area on the second floor.... see sketch # 2	
Line 58909	Note:	
22Apr20 / 30Apr20		

HEATING AND AIR CONDITIONING

Inv.4614	1 - To supply & install a Humidifier to the furnace...	
Line 58891	Note:	
22Apr20 / 30Apr20		

MISCELLANEOUS

Inv.4614	1 - To supply & install the WAFFLE CEILING In the great room... see sketch # 1	
Line 58991	Note: NO CORNICE MOULDING WILL BE SUPPLIED OR INSTALLED.	
22Apr20 / 30Apr20		

PLUMBING

Inv.4614	1 - To supply & install a WATERLINE ROUGH-IN TO THE FRIDGE LOCATION (NO HOOK UP)	
Line 58892	Note:	
22Apr20 / 30Apr20		
Inv.4614	1 - To supply & install the Mirolin " BROOKE " free standing tub in lieu of the standard free standing tub in the master ensuite... see spec's	
Line 58893	Note:	
22Apr20 / 30Apr20		

EXTRAS AS PER OFFER

VENDOR TO INSTALL CAPPED GAS LINE (ROUGH-IN ONLY) AT REAR OF HOME FOR FUTURE BBQ LOCATION. LOCATION TO BE FINALIZED AT VENDORS SOLE DISCRETION. Worksheet Note:	
VENDOR TO SUPPLY & INSTALL AIR CONDITIONING UNIT, SIZED ACCORDINGLY, FROM VENDORS STANDARD SAMPLES. Worksheet Note:	

Sketch 1

Two Glass doors
w/ matching interior.
one on each side of
stair

Five LED pot
lights ±

Relocated
Light

Six LED ±
pot lights

Std light

Conduit &
elect. outlet at
approx. 6'6"

Reinforced
Light

FOUR POT
LIGHTS

FOUR POT
LIGHTS

THREE
POT
LIGHTS

TWO
POT
LIGHTS.

GROUND FLOOR PLAN

LOT: 51 THAMES PH. 4A.
Unit 4204 - El. C3
SPENCER - CORNER

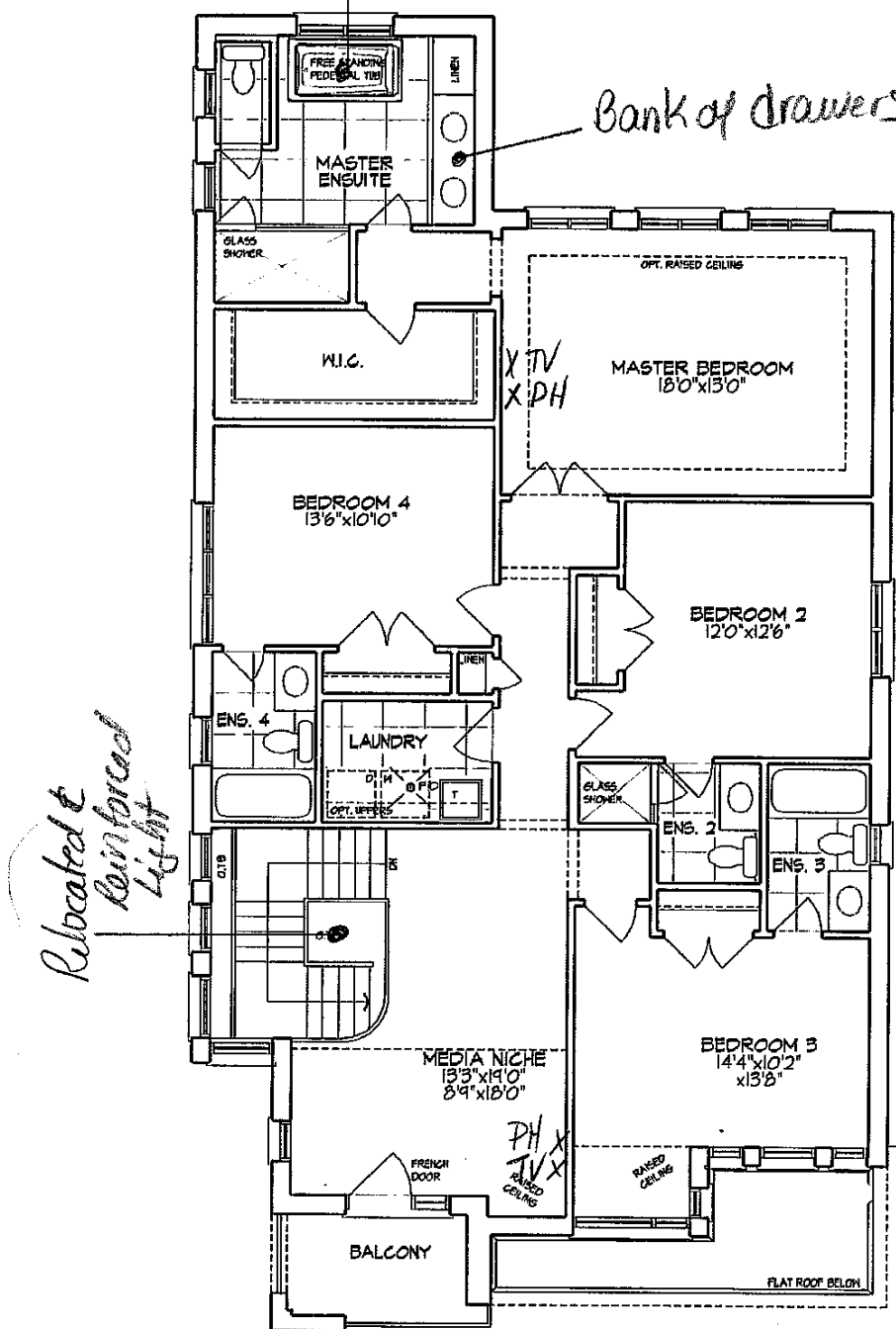
N. - [Signature]

Niravhi - T

Materials, specifications, and floor plans are subject to change without notice.
All renderings are artist conceptions. All floor plans are approximate dimensions.
Actual usable floor space may vary from the stated floor area. E. & E.O.

UPG. DUAL FREE STANDING
TUB.

Bank of drawers



SECOND FLOOR PLAN

→ V. Skop
→ Miroshki - T

LOT: 51 THAMES PH: 4A
Unit 4204 - El. C3
SPENCER - CORNER

Materials, specifications, and floor plans are subject to change without notice.
All renderings are artist conceptions. All floor plans are approximate dimensions.
Actual usable floor space may vary from the stated floor area. E. & E.O.

LOT: 51 THAMES PH: 4A
RE: UPG. FREESTANDING TUB FOR MASTER ENS.



Brooke™ | 1

Brooke™

Categories: Acrylic Freestanding

DESCRIPTION

68" Freestanding Bath
SKU #: CF2002

FEATURES

- Installation friendly two piece design
- Accepts deck mounted faucet
- Includes a chrome integral pop up drain and rectangular overflow
- ~~• Brushed nickel drain and overflow covers available~~
- Centre drain
- Includes levelling feet
- Available in White Only



DIMENSIONS

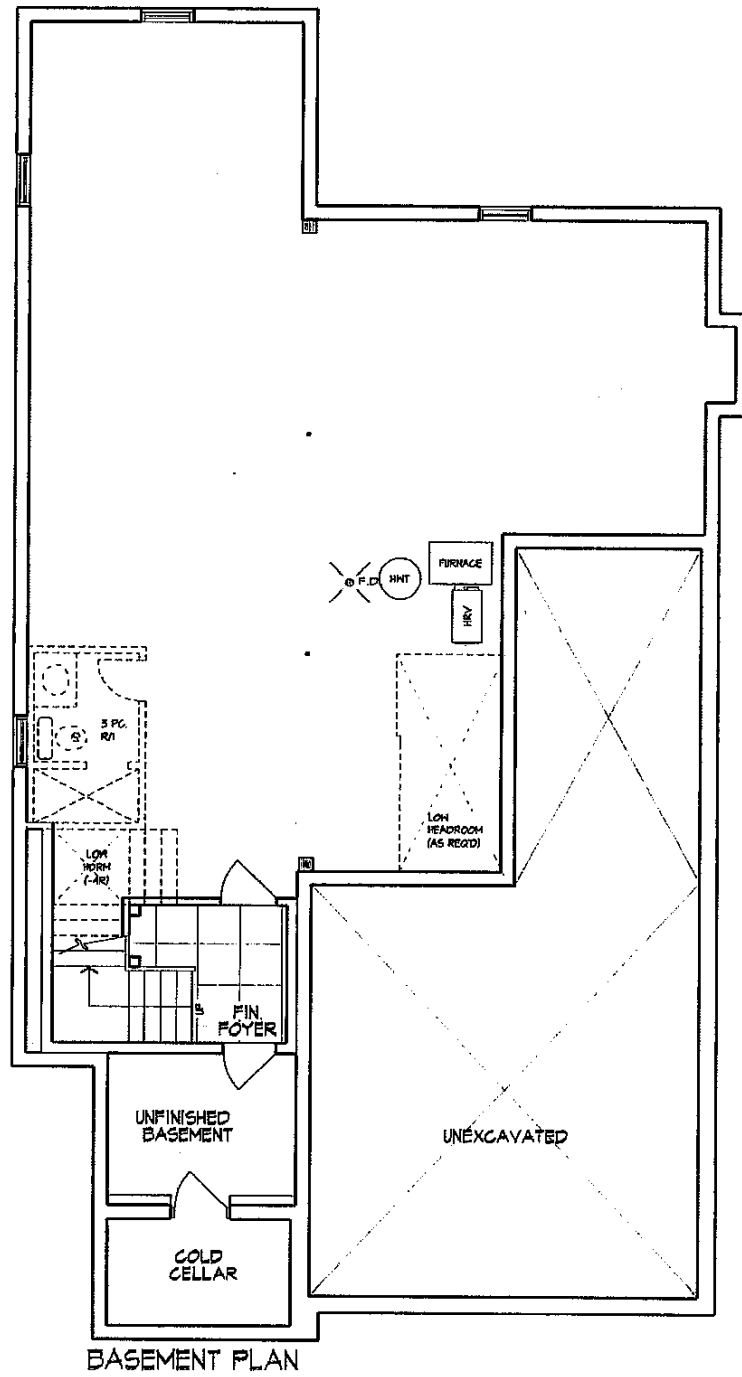
68" x 36" x 23"

OPTIONS & ACCESSORIES

SOAKER

CF2002

→ V. Joffe
→ Miroshi - T



→ V. [Signature]

→ Ninoshi - J

LOT: 51 THAMES PH. 4A
 Unit 4204 - El. C3
 SPENCER - CORNER

Materials, specifications, and floor plans are subject to change without notice.
 All renderings are artist conceptions. All floor plans are approximate dimensions.
 Actual usable floor space may vary from the stated floor area. E. & E.O.

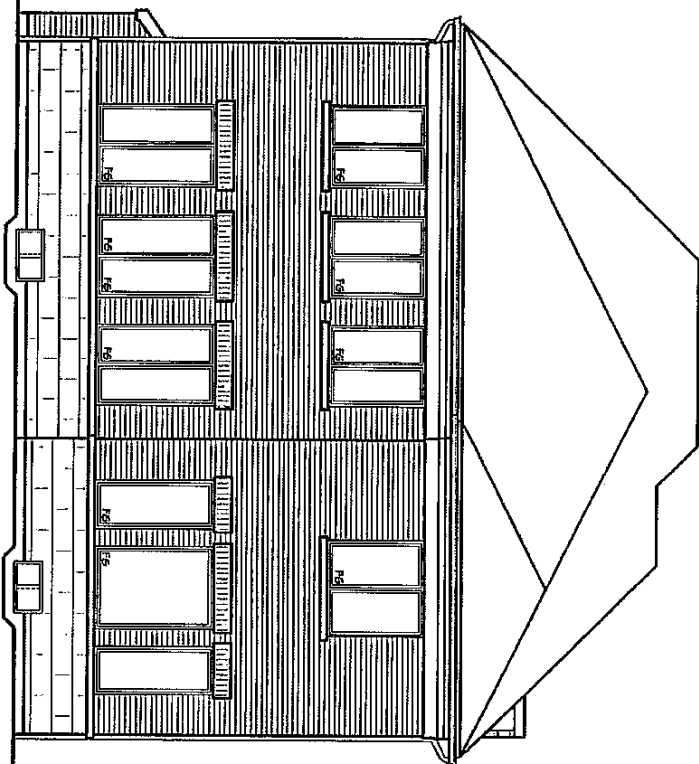
LOT 51 THAMES

PH: 4A

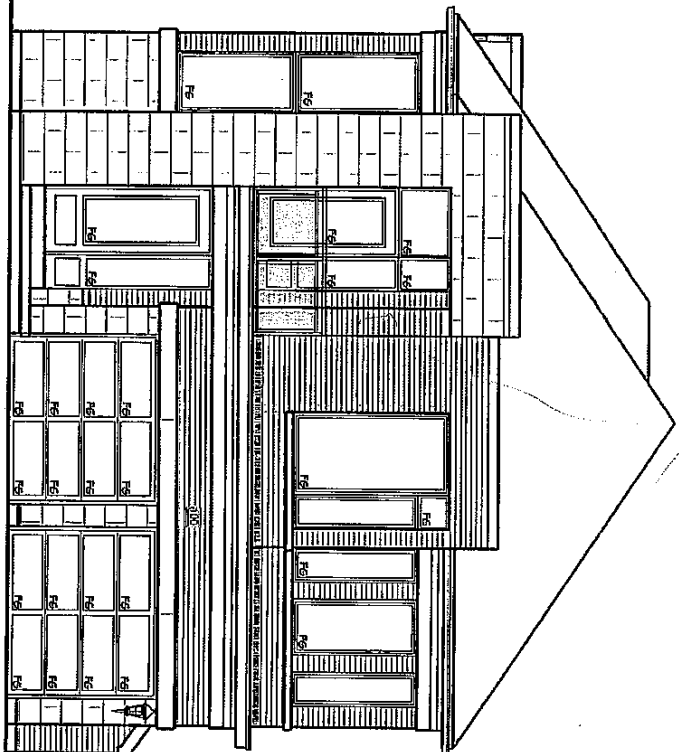
→ V. *Shyde*

→ Nivroski - T

REAR ELEVATION



FRONT ELEVATION



Unit 4204 - E.I. C3
SPENCER - CORNER

Materials, specifications, and floor plans are subject to change without notice.
All renderings are artist conceptions. All floor plans are approximate dimensions.
Actual usable floor space may vary from the stated floor area. E. & E.O.

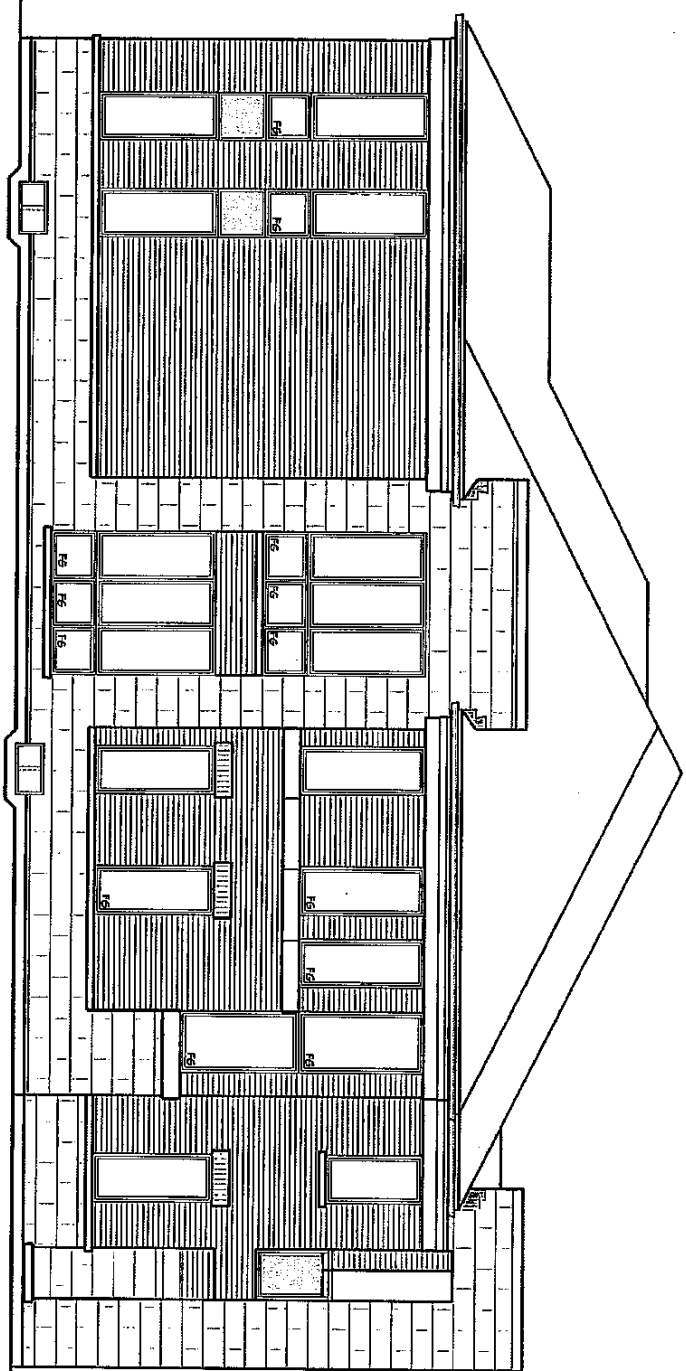
LOT: 51 THAMES

PH: 4A

→ N. Apple

→ Niroshi T

FLANKAGE ELEVATION



Unit 4204 - E1, C3
SPENCER - CORNER

Materials, specifications, and floor plans are subject to change without notice.
All renderings are artist conceptions. All floor plans are approximate dimensions.
Actual usable floor space may vary from the stated floor area. E. & F.O.