



CONSTRUCTION SUMMARY

Kingsmen (Thames) Inc. / Havelock Corners (Kingsmen)

Lot/Unit: 64 Phase/Building: 4A Model/Floor Plan: James (3601) Elev C 4 Bed - 2+1 Bath

CABINETRY HOOD FANS

Inv.4597	1 - ACCOMMODATE FOR MICROWAVE HOOD FAN COMBO - PURCHASER MUST SUPPLY SPECS - VIKING SERIES	
Line 58687	Note: No O.T.R. has been purchased, still to install the standard hood fan.	
14Apr20 / 28Apr20		

CABINETRY VANITY

Inv.4597	1 - To supply & install the VANITY BANK OF DRAWERS - MAX. WIDTH 55CM - VIKING SERIES in the master ensuite.... see sketch # 2	
Line 58692	Note:	
14Apr20 / 28Apr20		

ELECTRICAL

Inv.4597	1 - To supply & install the standard T.V rough in in the great room and master bedroom... see sketch #1 & # 2	
Line 58688	Note: The T.V. rough in in the great room needs to be installed at approx. 66" + - up from the floor next to the upgraded electrical outlet....	
14Apr20 / 28Apr20		
This is for a wall mount T.V.		
Inv.4597	1 - To supply & install the standard Phone rough in in the kitchen, master bedroom and bedroom # 2.... see sektch # 1 & # 2	
Line 58689	Note:	
14Apr20 / 28Apr20		
Inv.4597	1 - To SUPPLY AND INSTALL AN ADDITIONAL BASIC RECEPTACLE (NOT DEDICATED) at approx. 66 " + - up from the floor centered to the F/P mantle next + -	
Line 58690	Note: Next to the standard T.V. rough in in the great room.... see sketch # 1	
14Apr20 / 28Apr20		
This is for a wall mount T.V.		
Inv.4597	1 - Relcoate the standard ceiling light from the upper stair landing to the O.T.B area on the 2nd. floor... see sketch # 2	
Line 58691	Note:	
14Apr20 / 28Apr20		
Inv.4597	1 - To SUPPLY AND INSTALL AN ADDITIONAL BASIC RECEPTACLE (DEDICATED CIRCUIT AND INCLUDES ARC FAULT BREAKER) for the future O.T.R. microwave.	
Line 58686	Note: O.T.R. microwave has not been purchased, still to install the std. hood fan	
14Apr20 / 28Apr20		

HEATING AND AIR CONDITIONING

Inv.4597	1 - To supply & install a Humidifier to the furnace.	
Line 58685	Note:	
14Apr20 / 28Apr20		

MISCELLANEOUS



CONSTRUCTION SUMMARY

Kingsmen (Thames) Inc. / Havelock Corners (Kingsmen)

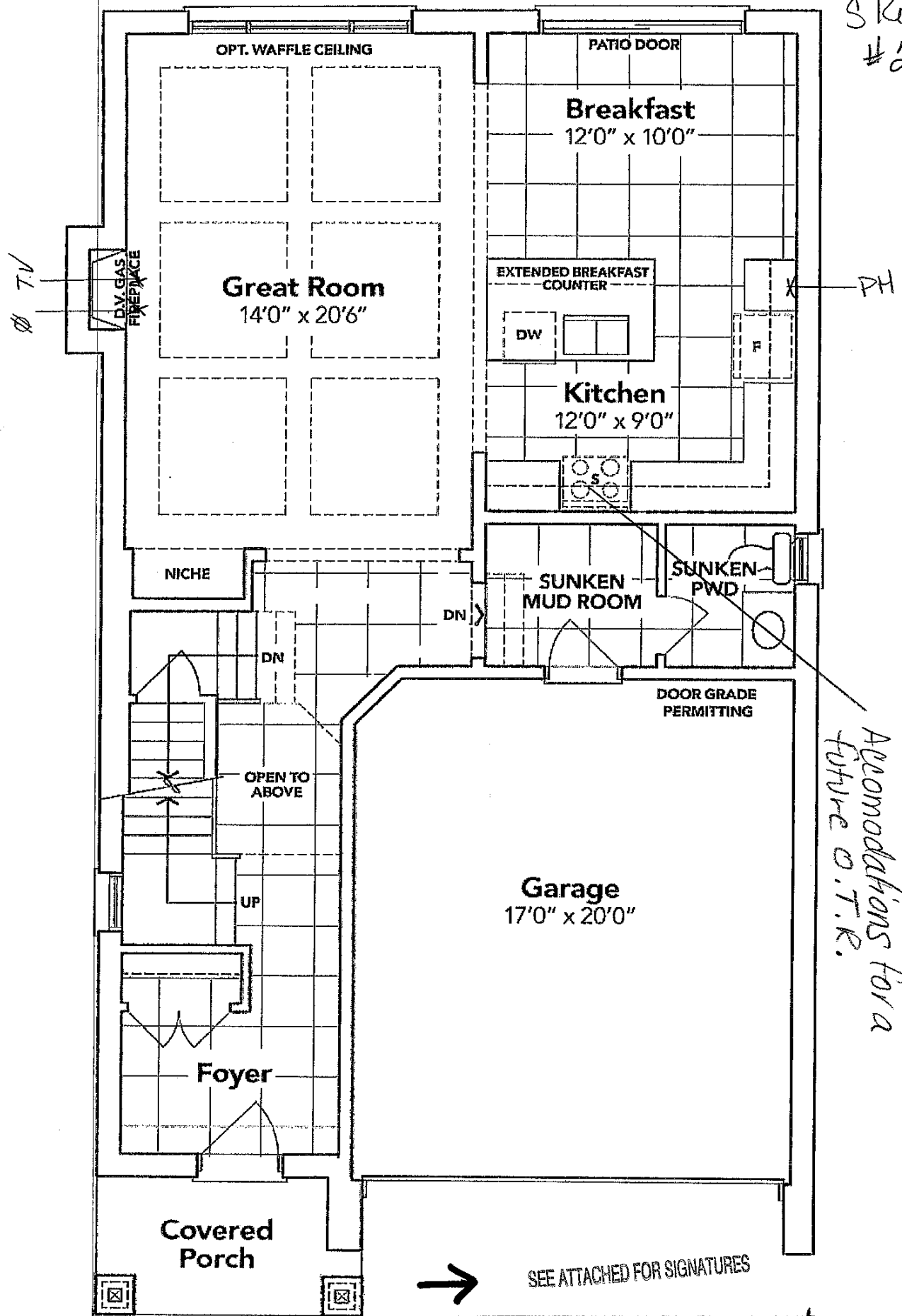
Lot/Unit: 64 Phase/Building: 4A Model/Floor Plan: James (3601) Elev C 4 Bed - 2+1 Bath

EXTRAS AS PER OFFER

VENDOR TO INSTALL CAPPED GAS LINE (ROUGH-IN ONLY) AT REAR OF HOME FOR FUTURE BBQ LOCATION. LOCATION TO BE FINALIZED AT VENDORS SOLE DISCRETION. <i>Worksheet</i> Note:	
VENDOR TO SUPPLY & INSTALL AIR CONDITIONING UNIT, SIZED ACCORDINGLY, FROM VENDORS STANDARD SAMPLES. <i>Worksheet</i> Note:	

Floor Plan

Phase 4A
Model: James (3601) Elev C 4 Bed - 2+1 Bath
Standard
LOT: 64



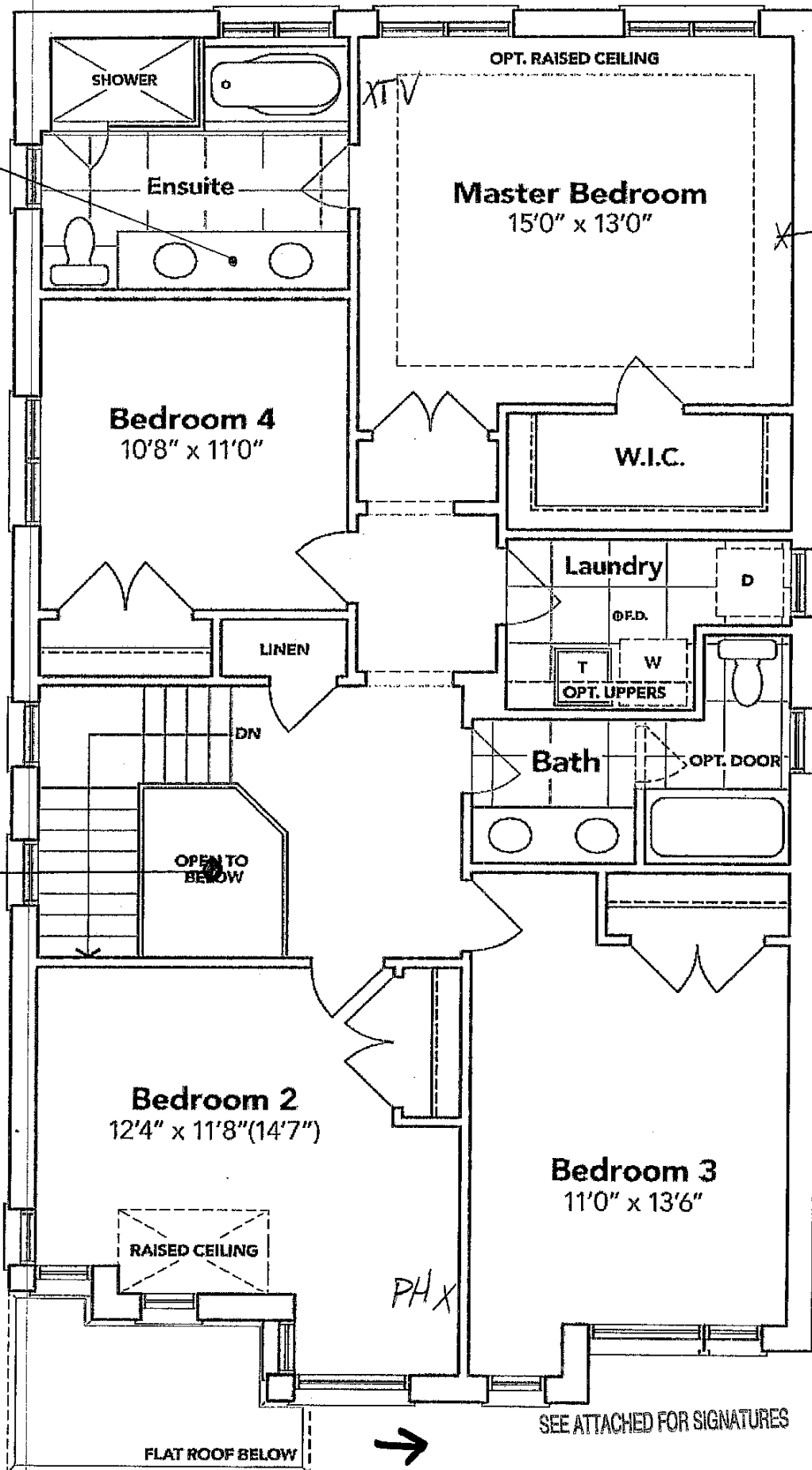
GROUND FLOOR EL. C

The floor plans and elevations shown are pre-construction plans and may be revised or improved as necessitated by architectural controls and the construction process. The measurements adhere to the rules and regulations of the TARION Warranty Corporation's official method for the calculation of floor area. Materials, specifications and floor plans are subject to change without notice. All house renderings are artist's concept only. Actual usable floor space may vary from the stated floor area. All options shown are upgrades. E. & O. E.

Sketch #2

Bank of drawers

Relocated light



SEE ATTACHED FOR SIGNATURES

SECOND FLOOR EL. C

The floor plans and elevations shown are pre-construction plans and may be revised or improved as necessitated by architectural controls and the construction process. The measurements adhere to the rules and regulations of the TARION Warranty Corporation's official method for the calculation of floor area. Materials, specifications and floor plans are subject to change without notice. All house renderings are artist's concept only. Actual usable floor space may vary from the stated floor area. All options shown are upgrades. E. & O. E.

(Signature)