

Kingsmen (Thames) Inc. / Havelock Corners (Kingsmen)

Lot/Unit: 24 Phase/Building: 4A Model/Floor Plan: James (3601) Elev A 4 Bed - 2+1 Bath

CABINETRY MICROWAVE OVEN STOVE COOKTOP

Inv.4609	1 - To supply & install WALL CABINET WITH SHELF FOR MICROWAVE - FINISHED INTERIOR - OPENING 24INCHESW X 13 3 - 4INCHESH X 17INCHESD - VIKING SERIES in the kitchen... see sketch # 1	
Line 59046	Note: Elec. outlet is sold sep.	
21Apr20 / 28Apr20		

COUNTER TOP

Inv.4609	1 - As per schedule "PE": Vendor to include level 1, 2cm granite or quartz in all bathrooms, and level 1, 3cm granite or quartz in the kitchen , as per plan, in lieu of the included laminate counter tops. Selections to be made from builders standard samples	
Line 58815	Note:	
21Apr20 / 28Apr20		

ELECTRICAL

Inv.4609	1 - To supply & install the standard T.V. rough in in the great room and master bedroom... see sketch # 1 & # 2	
Line 58817	Note: Install the std. t.v. rough in in the great room at approx. 66" + - up from the floor next to + - the upg. elec. outlet...	
21Apr20 / 28Apr20 This is for a wall mount T.V.		
Inv.4609	1 - To supply & intall the standard Phone rough in in the kitchen, master bedroom and bedroom # 4... see sketch # 1 & # 2	
Line 58818	Note:	
21Apr20 / 28Apr20		
Inv.4609	1 - To SUPPLY AND INSTALL AN ADDITIONAL BASIC RECEPTACLE (NOT DEDICATED) at approx. 66 " +- up from the floor centered +- to the F/P mantle	
Line 58820	Note: in the great room.... see sketch # 1	
21Apr20 / 28Apr20 This is for a future wall mount t.v.		
Inv.4609	1 - Relocate the standard ceiling light from the upper stair landing to the O.T.B. area on the second floor...see sketch # 2	
Line 58825	Note:	
21Apr20 / 28Apr20		
Inv.4609	1 - Reinforce the relocated light at the O.T.B. area on the second floor... see sketch # 2	
Line 58826	Note:	
21Apr20 / 28Apr20		
Inv.4609	1 - To SUPPLY AND INSTALL MICROWAVE PLUG (DEDICATED CIRCUIT AND INCLUDES ARC FAULT BREAKER) to be installed at micro. shelf, which is sold sep.	
Line 59045	Note: This outlet is mandatory to be sold with the micro. shelf	
21Apr20 / 28Apr20		

HARDWOOD

HEATING AND AIR CONDITIONING



CONSTRUCTION SUMMARY

Kingsmen (Thames) Inc. / Havelock Corners (Kingsmen)

Lot/Unit: 24 Phase/Building: 4A Model/Floor Plan: James (3601) Elev A 4 Bed - 2+1 Bath

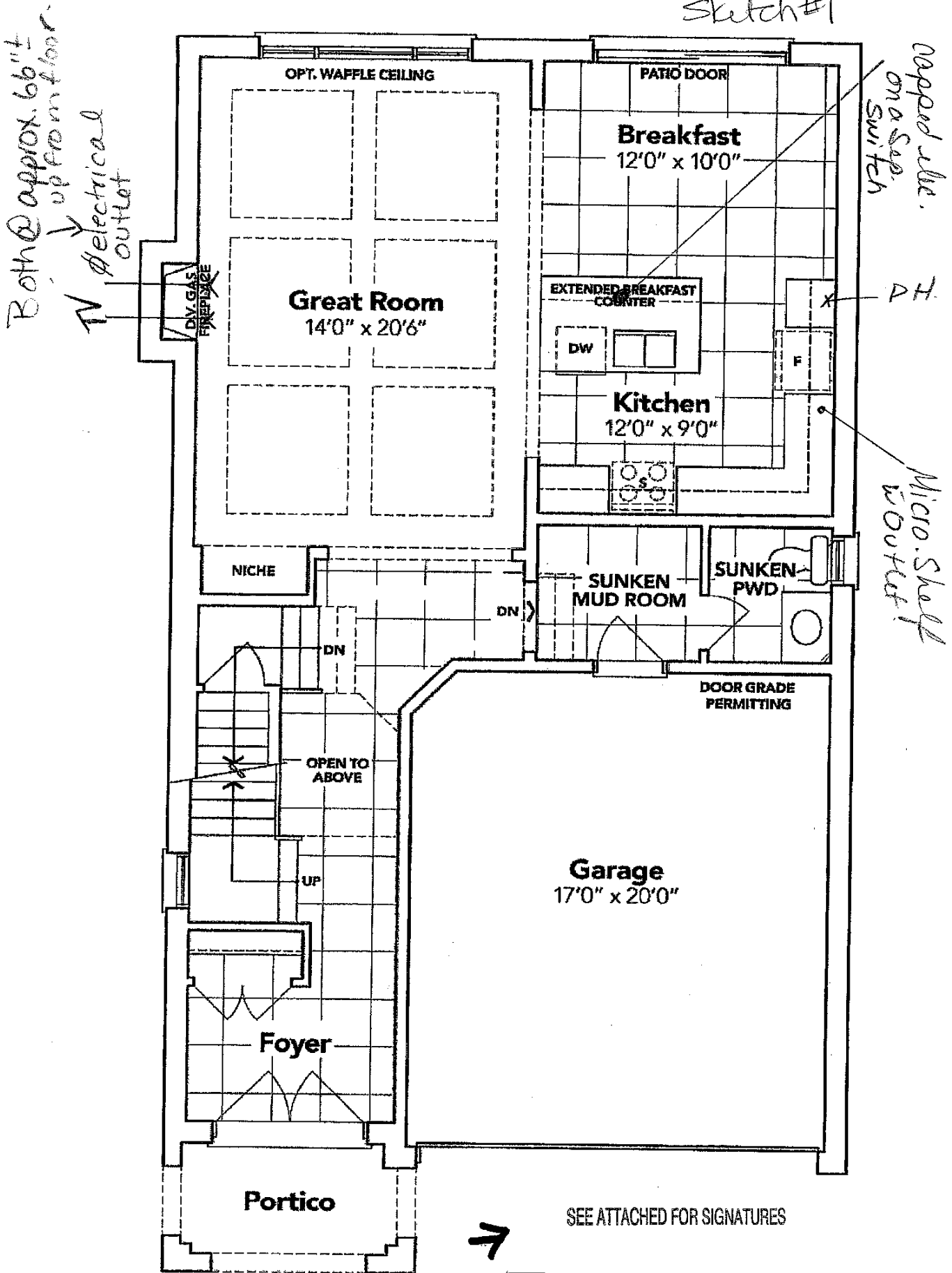
EXTRAS AS PER OFFER

VENDOR TO INSTALL CAPPED GAS LINE (ROUGH-IN ONLY) AT REAR OF HOME FOR FUTURE BBQ LOCATION. LOCATION TO BE FINALIZED AT VENDORS SOLE DISCRETION. <i>Worksheet</i> Note:	
VENDOR TO INSTALL GAS LINE (ROUGH-IN ONLY) TO KITCHEN IN AT STOVE LOCATION (AS PER PLAN) TO INCLUDE 110V CODE REQUIREMENT. <i>Worksheet</i> Note:	
VENDOR TO SUPPLY & INSTALL AIR CONDITIONING UNIT, SIZED ACCORDINGLY, FROM VENDORS STANDARD SAMPLES. <i>Worksheet</i> Note:	
VENDOR TO INCLUDE ENGINEERED HARDWOOD THROUGHOUT THE 2ND FLOOR IN LIEU OF INCLUDED CARPET, AS PER PLAN, AND SELECTIONS AS OUTLINED IN SCHEDULE A. THIS HAS NO CASH VALUE. <i>Worksheet</i> Note:	

SCHEDULE "B-1"
Floor Plan

Lot 24
Phase 4A
Model: James (3601) Elev A 4 Bed - 2+1 Bath
Standard

Sketch #1



SEE ATTACHED FOR SIGNATURES

GROUND FLOOR EL. A

The floor plans and elevations shown are pre-construction plans and may be revised or improved as necessitated by architectural controls and the construction process. The measurements adhere to the rules and regulations of the TARION Warranty Corporation's official method for the calculation of floor area. Materials, specifications and floor plans are subject to change without notice. All house renderings are artist's concept only. Actual usable floor space may vary from the stated floor area. All options shown are upgrades, E. & O. E.

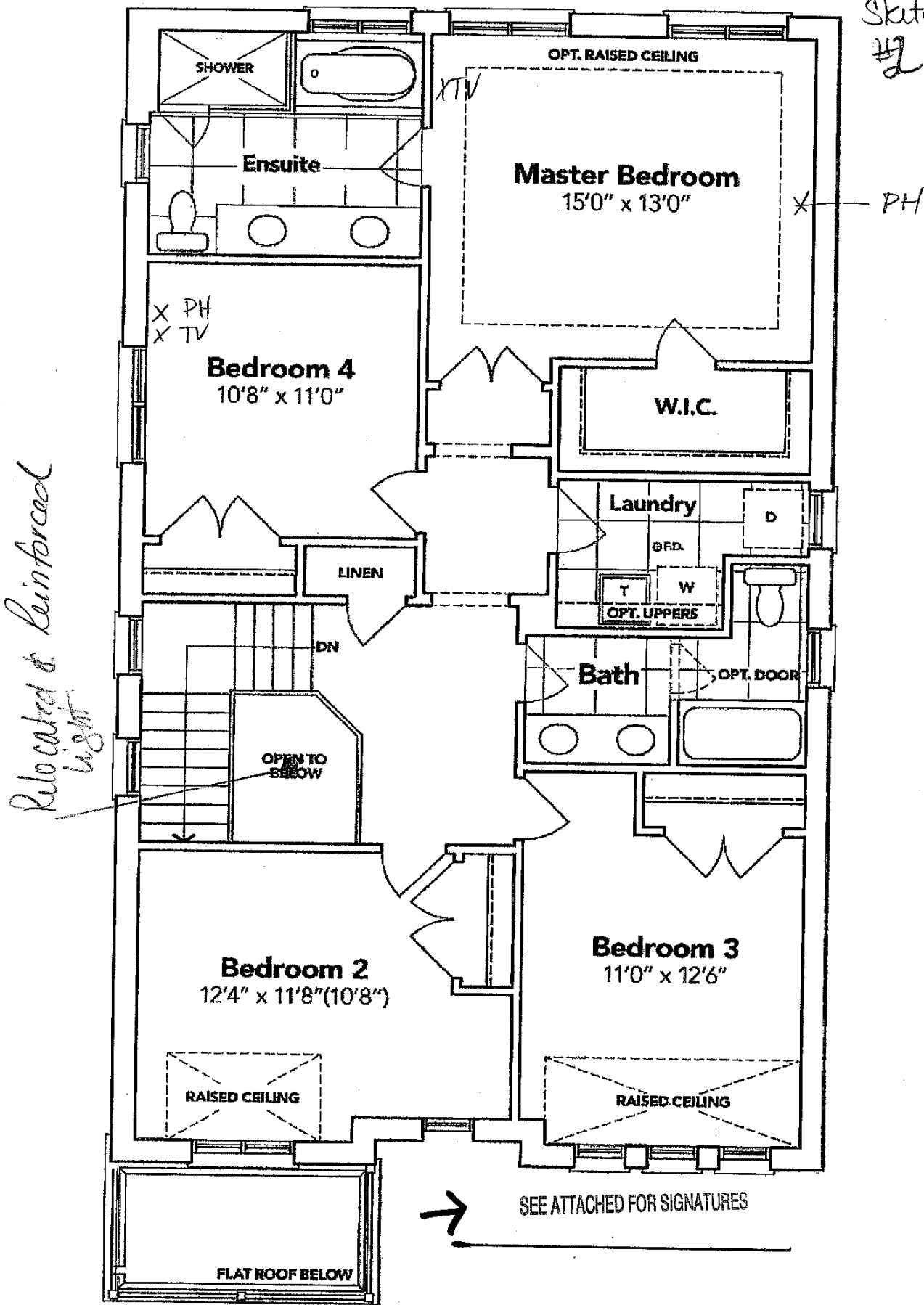
SCHEDULE "B-1" - Page 3 of 3

A.S.

SCHEDULE "B-1"
Floor Plan

Lot 24
Phase 4A
Model: James (3601) Elev A 4 Bed - 2+1 Bath
Standard

Sketch
#2



SECOND FLOOR EL. A

The floor plans and elevations shown are pre-construction plans and may be revised or improved as necessitated by architectural controls and the construction process. The measurements adhere to the rules and regulations of the TARION Warranty Corporation's official method for the calculation of floor area. Materials, specifications and floor plans are subject to change without notice. All house renderings are artist's concept only. Actual usable floor space may vary from the stated floor area. All options shown are upgrades. E. & O. E.