

Kingsmen (Thames) Inc. / Havelock Corners (Kingsmen)

Lot/Unit: 54 Phase/Building: 4A Model/Floor Plan: Louis (4203) Elev B 4 Bed - 4+1 Bath

CABINETRY ACCESSORIES

Inv.4613	3 - To supply & install the LIGHT VALANCE - FOR CLARIFICATION OF STYLES SEE MOULDING MATRIX - LIGHT VALANCE IS NOW APPROXIMATELY 2INCHES 50MM HIGH - - CLASSIC SERIES in the kitchen..	
Line 58883	Note: Rough in wires on a sep. switch is sold sep.	
22Apr20 / 23Apr20		

CABINETRY APPLIANCE - FRIDGE

Inv.4613	1 - To supply & install 66CM DEEP FRIDGE ENCLOSURE - COUNTER DEPTH WITH NO WALLS - 2 66CM DEEP GABLES AND 1 66CM DEEP CABINET - THIS IS NOT A ZERO CLEARANCE ENCLOSURE. STANDARD HEIGHTS AND WIDTHS WILL BE USED.CLASSIC SERIES.in the kitchen...see sketch # 1	
Line 58876	Note: See attached for fridge spec's	
22Apr20 / 23Apr20		

CABINETRY BASE CABINETS

Inv.4613	1 - To supply & install the BASE PIE CUT CORNER - CLASSIC SERIES in the kitchen. see sketch # 1	
Line 58878	Note:	
22Apr20 / 23Apr20		
Inv.4613	1 - To supply & install the POTS & PANS DRAWER - MINIMUM 60 CM - MAXIMUM 90 CM - SIZE SUBJECT TO FLOOR PLAN - CLASSIC SERIES in the kitchen... see sketch # 1	
Line 58879	Note:	
22Apr20 / 23Apr20		

CABINETRY HARDWARE

Inv.4613	1 - To supply & install the BASE WASTE / RECYCLE CENTER PULL OUT DOOR - ONLY AVAILABLE IN 45 CM CABINET (2) 35L BINS - PRICE IS PER UNIT... see sketch # 1	
Line 58882	Note:	
22Apr20 / 23Apr20		

CABINETRY HOOD FANS

Inv.4613	1 - To supply & install the HOOD FAN - PRO COLLECTION (SCB72230) WALL MOUNT RANGE HOOD WITH 650 CFM FAN - 30 INCH... see spec's	
Line 58859	Note: Accomodation fee for this upgrade is on a sep. upgrade.	
22Apr20 / 23Apr20		
Inv.4613	1 - To accomodate for a future 30" Chimney hood fan.... chimney hood fan sold sep..	
Line 58860	Note:	
22Apr20 / 23Apr20		

CABINETRY MICROWAVE OVEN STOVE COOKTOP

Inv.4613	1 - To supply & install the WALL CABINET WITH SHELF FOR MICROWAVE - FINISHED INTERIOR - OPENING 24INCHESW X 13 3 - 4INCHESH X 17INCHESD - CLASSIC SERIES in the kitchen... see sketch # 1	
Line 58880	Note: Elec. outlet is sold sep. and is required to be purchased with this upgrade.	
22Apr20 / 23Apr20		

Kingsmen (Thames) Inc. / Havelock Corners (Kingsmen)

Lot/Unit: 54 Phase/Building: 4A Model/Floor Plan: Louis (4203) Elev B 4 Bed - 4+1 Bath

Inv.4613	1 - To accomodate the cabinetry for a future SLIDE-IN STOVE PREP FOR GRANITE - SUPPLY SPECS - CLASSIC SERIES... see spec's	
Line 58887	Note: Accomodations for this upgrade for the stone countertop is sold sep.	
22Apr20 / 23Apr20		

CABINETRY VANITY

Inv.4613	1 - To supply & isntall the VANITY BANK OF DRAWERS - MAX. WIDTH 55CM - CLASSIC SERIES in the master ensuite... see sketch # 2	
Line 58886	Note:	
22Apr20 / 23Apr20		

CABINETRY WALL AND HUTCH

Inv.4613	1 - To supply & install the UPPER ANGLE CORNER PER UNIT - CLASSIC SERIES.in the kitchen... see sketch # 1	
Line 58877	Note:	
22Apr20 / 23Apr20		

COUNTER TOP - ACCESSORIES

Inv.4613	1 - To supply & install a shower niche in the master ensuite...see sketch # 2	
Line 58873	Note: The colour of this niche will be selected at the interior finishing appointment.	
22Apr20 / 23Apr20		

COUNTER TOP - KITCHEN

Inv.4613	1 - To accomodate for a future 30" slide in stove in the kitchen... see spec's	
Line 58888	Note:	
22Apr20 / 23Apr20		

ELECTRICAL

Inv.4613	1 - To supply & install rough in wires on a sep. switch for future lower valance lights.	
Line 58885	Note: NO LIGHTS HAVE BEEN PURCHASED	
22Apr20 / 23Apr20 LOWER VALANCE TRIM IS SOLD SEP.		
Inv.4613	1 - To SUPPLY AND INSTALL MICROWAVE PLUG (DEDICATED CIRCUIT AND INCLUDES ARC FAULT BREAKER) to be installed where microwave shelf is... see sketch # 1	
Line 58881	Note: Microwave shelf sold sep.	
22Apr20 / 23Apr20		
Inv.4613	1 - To supply & install the standard T.V. rough in in the Great room and master bedroom.... see sketch # 1 & # 2	
Line 58863	Note:	
22Apr20 / 23Apr20		
Inv.4613	1 - To supply & install the standard Phone rough in in the kitchen, great room and master bedroom... see sketch # 1 & # 2	
Line 58864	Note:	
22Apr20 / 23Apr20		
Inv.4613	1 - To SUPPLY AND INSTALL AN ADDITIONAL BASIC RECEPTACLE (NOT DEDICATED) at approx. 66" + - up from the floor centered + - to the F/P mantlesee sketch	
Line 58865	Note: This is for a future wall mount T.V.	
22Apr20 / 23Apr20		

Kingsmen (Thames) Inc. / Havelock Corners (Kingsmen)

Lot/Unit: 54 Phase/Building: 4A Model/Floor Plan: Louis (4203) Elev B 4 Bed - 4+1 Bath

Inv.4613 Line 58866 22Apr20 / 23Apr20	1 - To supply & install a conduit pipe at approx. 66 " +- up from the floor centered +- to the F/P mantle and terminated next to +- the standard T.V. and Phone rough in in the great room... see sketch # 1 Note:	
Inv.4613 Line 58867 22Apr20 / 23Apr20	3 - To supply & install a RG6 CABLE rough in, one in bedroom #2 one in bedroom #3 and one in bedroom # 4.... see sketch # 2 Note:	
Inv.4613 Line 58868 22Apr20 / 23Apr20	1 - To SUPPLY AND INSTALL EXTRA CEILING BOX ROUGH IN CAPPED (DOES NOT INCLUDE SWITCH) over the breakfast bar in the kitchen... see sketch # 1 Note: This capped ceiling elec. will be connected to a sep. switch, switch is sold sep.	
Inv.4613 Line 58869 22Apr20 / 23Apr20	1 - To supply & intal an ADDITIONAL SINGLE POLE SWITCH connected to the upgraded capped ceiling elec. over the breakfast bar in the kitchen. Note:	
Inv.4613 Line 58871 22Apr20 / 23Apr20	1 - Relocate the std. ceiling light from the upper stair landing to the O.T.B. area on the second floor....see sketch # 2 Note:	
Inv.4613 Line 58872 22Apr20 / 23Apr20	1 - To SUPPLY AND INSTALL REINFORCING FOR A CEILING at the O.T.B. area on the second floor.... see sketch # 2 Note:	

HEATING AND AIR CONDITIONING

Inv.4613 Line 58855 22Apr20 / 23Apr20	1 - As per schedule "PE": Vendor to install capped gas line (rough in only) at rear of home for future BBQ locaion. Location to be finalized at vendors sole discretion. Note:	
Inv.4613 Line 58856 22Apr20 / 23Apr20	1 - As per schedule "PE": Vendor to supply & install air conditioning unit, sized accordingly, from vendors standard samples. Note:	
Inv.4613 Line 58858 22Apr20 / 23Apr20	1 - To supply & install a gas capped rough in with the 110V electrical (code requirement) for the future gas stove.... see spec's Note:	

MISCELLANEOUS

PLUMBING

Inv.4613 Line 58861 22Apr20 / 23Apr20	1 - To supply & install the Free standing Mirolin BROOKE tub in white in the master ensuite in lieu of the standard free standing tub.... see spec's Note:	
---	--	--



CONSTRUCTION SUMMARY

Kingsmen (Thames) Inc. / Havelock Corners (Kingsmen)

Lot/Unit: 54 Phase/Building: 4A Model/Floor Plan: Louis (4203) Elev B 4 Bed - 4+1 Bath

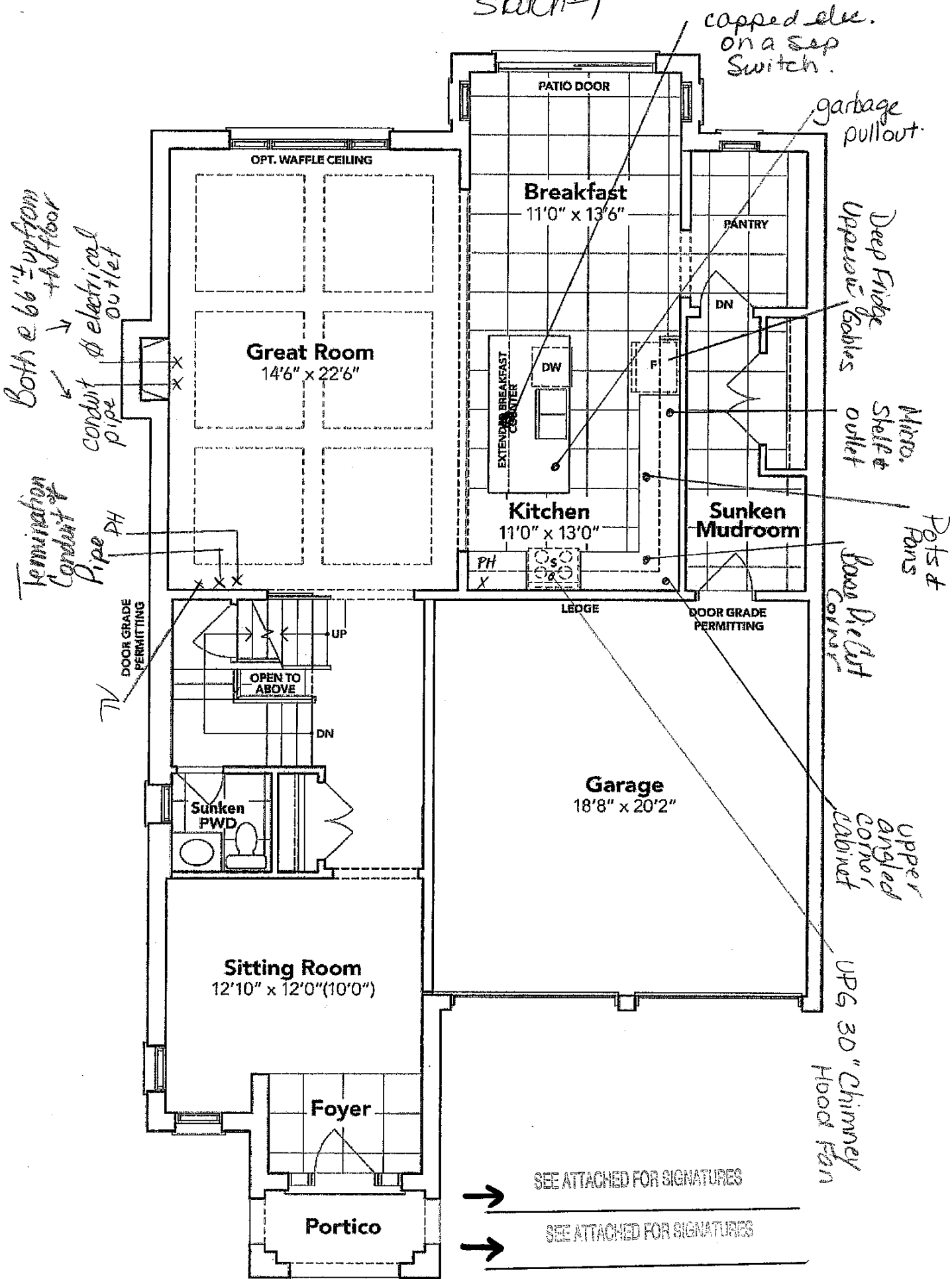
Inv.4613	1 - To supply & intall the WATERLINE ROUGH-IN TO THE FRIDGE LOCATION (NO HOOK UP)	
Line 58862	Note:	
22Apr20 / 23Apr20		

EXTRAS AS PER OFFER

SCHEDULE "B-1"
Floor Plan

LOT: 54
sketch #1

LOT 54
Phase 4A
Model: Louis (4203) Elev B 4 Bed - 4+1 Bath
Standard



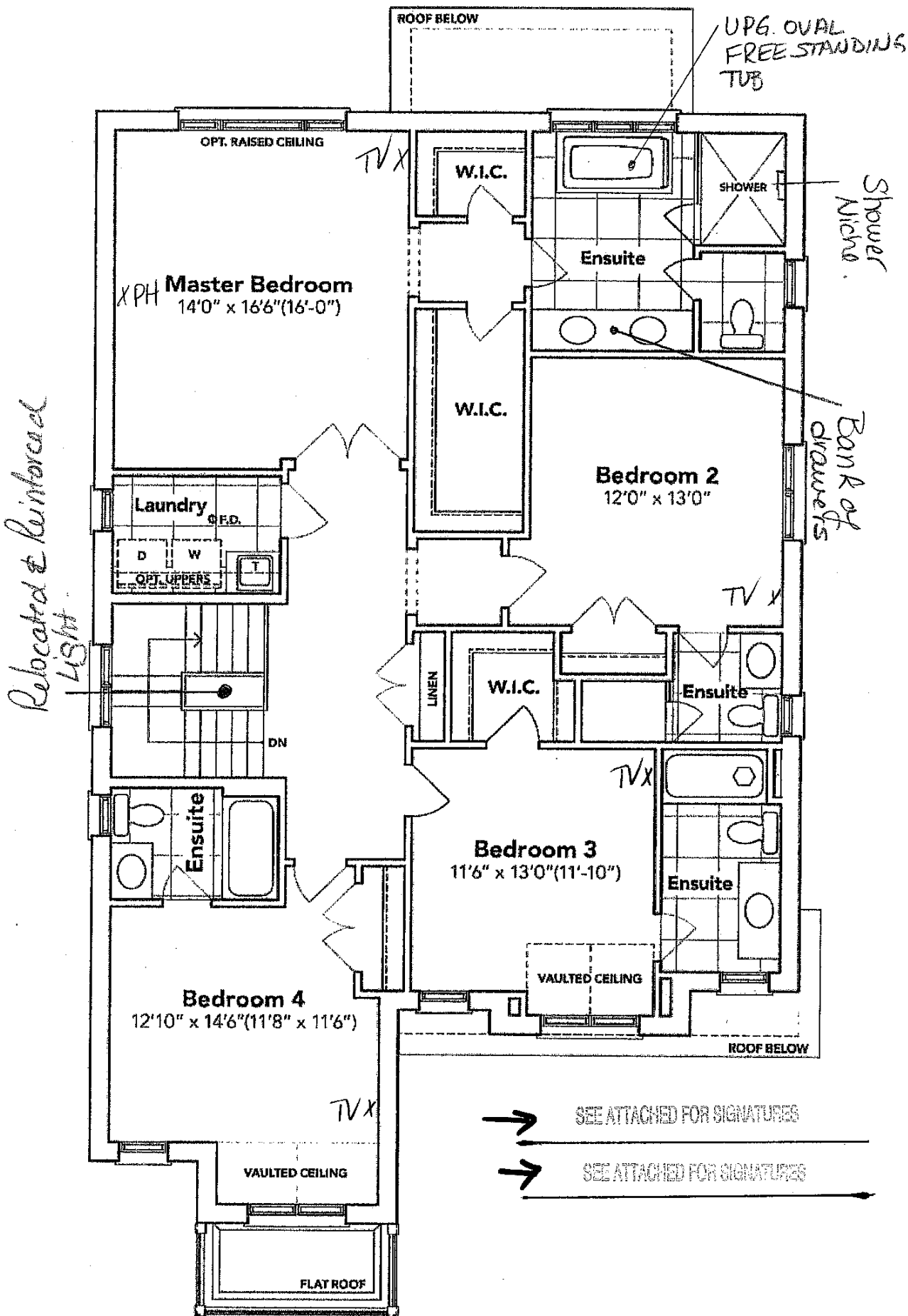
GROUND FLOOR EL. B

The floor plans and elevations shown are pre-construction plans and may be revised or improved as necessitated by architectural controls and the construction process. The measurements adhere to the rules and regulations of the TARION Warranty Corporation's official method for the calculation of floor area. Materials, specifications and floor plans are subject to change without notice. All house renderings are artist's concept only. Actual usable floor space may vary from the stated floor area. All options shown are upgrades. E. & O. E.

SCHEDULE "B-1"
Floor Plan

Sketch #2,

LOT 54
Phase 4A
Model: Louis (4203) Elev B 4 Bed - 4+1 Bath
Standard



SECOND FLOOR EL. B

The floor plans and elevations shown are pre-construction plans and may be revised or improved as necessitated by architectural controls and the construction process. The measurements adhere to the rules and regulations of the TARION Warranty Corporation's official method for the calculation of floor area. Materials, specifications and floor plans are subject to change without notice. All house renderings are artist's concept only. Actual usable floor space may vary from the stated floor area. All options shown are upgrades. E. & O. E.

Lot: 54 Havelock Corners PH: 4A
Re: UPGRADED FREE STANDING TUB FOR
MASTER ENS.



Brooke™

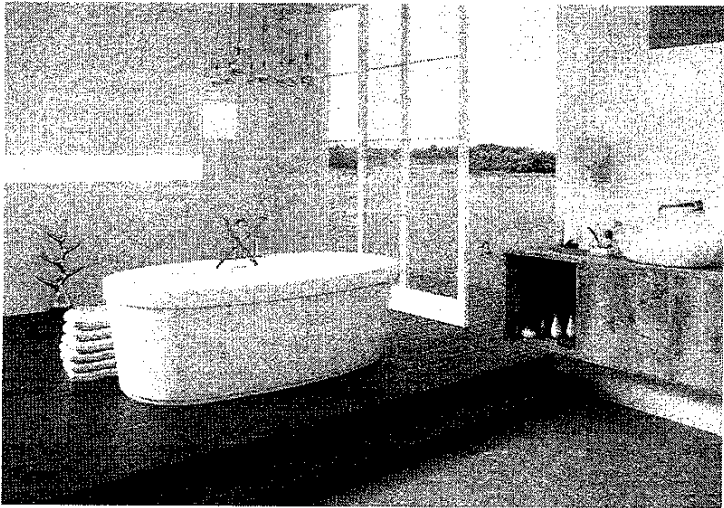
Categories: Acrylic Freestanding

DESCRIPTION

68" Freestanding Bath
SKU #: CF2002

FEATURES

- Installation friendly two piece design
- Accepts deck mounted faucet
- Includes a chrome integral pop up drain and rectangular overflow
- ~~Brushed nickel drain and overflow~~
- Centre drain
- Includes levelling feet
- Available in White Only



DIMENSIONS

68" x 36" x 23"

OPTIONS & ACCESSORIES

SOAKER

CF2002

→ SEE ATTACHED FOR SIGNATURES

→ SEE ATTACHED FOR SIGNATURES

LOT: 54 Havelock Corraes PH: 4A
R: UPGRADED FREE-STANDING TUB FOR
MASTER ENS.



Brooke™ | 1

Brooke™

Categories: Acrylic Freestanding

DESCRIPTION

68" Freestanding Bath
SKU #: CF2002

FEATURES

- Installation friendly two piece design
- Accepts deck mounted faucet
- Includes a chrome integral pop up drain and rectangular overflow
- Centre drain
- Includes levelling feet
- Available in White Only



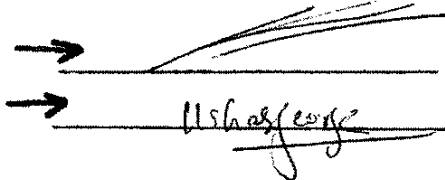
DIMENSIONS

68" x 36" x 23"

OPTIONS & ACCESSORIES

SOAKER

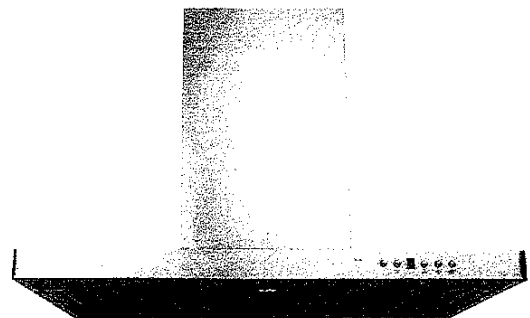
CF2002



Lot: 54 Havelock Corners PH-4A
Re: VPG. 30" Chimney Hood Fan for Kitchen.

Specifications

Air Flow Volume: 650 CFM
Electrical Connection: 120V/60Hz
Power Consumption: 240 Watts
Current: 2.0 Amps
Fan Speed: 1599 RPM
Finishes: Stainless Steel
Duct: 6" Round
Knock-out: 6" Round - Top Only
Dimensions: Width: 30"/36"
Height: 44 1/2"
Depth: 19 3/4"
Noise Level: Min. 2 Sones
Max. 7 Sones



SCB722 - Baffle Filter



Ordering Model Chart

Model	Colour	Knock-out	Duct	Size	Filter	CFM
SCB72230	Stainless Steel	6"	6" Round	30"	Baffle	650
SCB72236	Stainless Steel	6"	6" Round	36"	Baffle	650

→ SEE ATTACHED FOR SIGNATURES

→ SEE ATTACHED FOR SIGNATURES

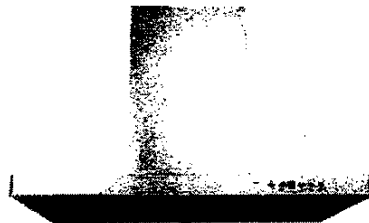
Notes



Lot: 54 Haverlock Corners PH-4A
Re: UPG. 30" Chimney Hood Fan for Kitchen.

Specifications

Air Flow Volume: 650 CFM
Electrical Connection: 120V/60Hz
Power Consumption: 240 Watts
Current: 2.0 Amps
Fan Speed: 1599 RPM
Finishes: Stainless Steel
Duct: 6" Round
Knock-out: 6" Round - Top Only
Dimensions: Width: 30"/36"
Height: 44 1/2"
Depth: 19 3/4"
Noise Level: Min. 2 Sones
Max. 7 Sones



SCB722 - Baffle Filter



Ordering Model Chart

Model	Finish	Duct Size	Duct Shape	Width	Filter Type	CFM
SCB72230	Stainless Steel	6"	6" Round	30"	Baffle	650
SCB72236	Stainless Steel	6"	6" Round	36"	Baffle	650

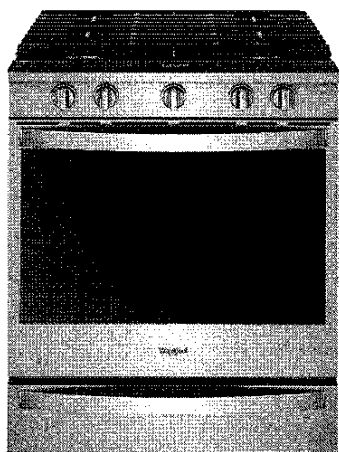
Notes

→ ~~_____~~
→ 11 1/2" x 19 3/4"

Cyclone®
Breathe Better

Lot: 54 Hawelock Corners PH-4A
Re: 30" Gas Slide'n Stove Spec's.

Prepared by
Josh Robins
josh@nooobody.com



5.8 cu. ft. Smart front control Gas Range with
EZ-2-Lift™ Hinged Cast-Iron Grates

WEG750H0HZ

Available Finishes/Colours



WEG750H0HB
Black



WEG750H0HW
White



WEG750H0HV
FingerPrint Resistant Black Stainless Steel



WEG750H0HZ
FingerPrint Resistant Stainless Steel

Dimensions	
Depth	28 5/8
Height	36
Width	29 7/8

Oven Details	
Power On Indicator Light	No
Automatic Shut-Off	Yes
Interior Color	Grey
Oven Control Type	Electronic Touch

Configuration and Overview	
Fuel Type	Gas
Range Type	Slide-in
Size (IN, inches)	30

Oven Cooking System	Convection
Oven Control Location	Front
Hidden Bake Element	Yes
Convection Functions	Bake Broil Roast Both
Broiler Location	Top of Oven
Oven Light Switch Location	Top of Console

Cut out routine steps with multi-step cooking , you can use your smartphone or tablet to send multiple cooking instructions to the oven all at once. A touchscreen also suggests customized presets based on your family's routines so they can make every second count with instant access to settings they use most.

Top Features
Smart appliance
Scan-to-Cook technology (US Only)
Yummly® Guided Cooking (US Only)

Exterior	
Door Removable	Yes
Drawer Type	Storage Drawer
Oven Door	Glass Window
Oven Window Size	Extra Large
Handle Material	Metal
Handle Type	Reach-Through Handle

Configuration	
Range Configuration	Slide-In

Manuals & Literature:

[Installation Guide](#) [Use and Care Guide](#)

[Warranty Information](#)

Oven Details	
Door Removable	Yes
Drawer Type	Storage Drawer
Automatic Convection Conversion Temperature Adjust	Yes

→ SEE ATTACHED FOR SIGNATURES

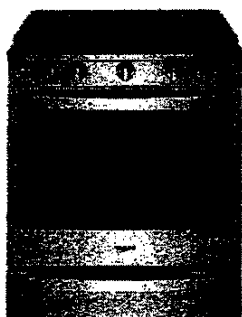
→ SEE ATTACHED FOR SIGNATURES



Because Whirlpool Corporation policy includes a continuous commitment to improve our products, we reserve the right to change materials and specifications without notice. Dimensions are for planning purposes only. For complete details, see Installation Instructions packed with product. Specifications subject to change without notice.

Lot: 54 Havelock Corners PH-4A
Re: 30" Gas Slide'n Store Specs.

Prepared by
Josh Robins
josh@noobody.com



5.8 cu. ft. Smart front control Gas Range with EZ-2-Lift™ Hinged Cast-Iron Grates

WEG750H0HZ

Available Finishes/Colours

☒ WEG750H0HB
Black

☐ WEG750H0HW
White

☒ WEG750H0HV
FingerPrint Resistant Black Stainless Steel

☐ WEG750H0HZ
FingerPrint Resistant Stainless Steel

Depth 29 5/8

Width 29 7/8

Fuel Type Gas

Size (inches) 30

Door Removable Yes

Oven Door Glass Window

Handle Material Metal

Door Removable Yes

Automatic Convection Yes

Conversion Temperature Adjust

Power On Indicator Light No

Interior Color Gray

Control Type Electronic Touch

Oven Cooking System Convection

Quick Cooker Location Top

Hidden Bake Element Yes

Broiler Location Top of Oven

Oven Light (On/Off) Location Top of Oven

Range Configuration Slide-In

Out out routine steps with multi-step cooking, you can use your smartphone or tablet to send multiple cooking instructions to the oven all at once. A touchscreen also suggests customized presets based on your family's routines so they can make every second count with instant access to settings they use most.

Smart appliances

Slide-In Cooktop with 5 Burners and Oven

Yearly® Golded Coating (US Only)

Manuals & Literature:

[Installation Guide](#) [Use and Care Guide](#)

[Warranty Information](#)

→
→
→
Ushazh

Whirlpool

Because Whirlpool Corporation policy includes a continuous commitment to improve our products, we reserve the right to change materials and specifications without notice. Dimensions are for planning purposes only. For complete details, see installation instructions packed with product. Specifications subject to change without notice.

Lot: 54 Havelock Corners PH: 4A
Re: 30" Gas Slidin' Stove Spec's CON'T

Mobile Home - Additional Installation Requirements

The installation of this range must conform to the Manufactured Home Construction and Safety Standard, Title 24 CFR, Part 3280 (formerly the Federal Standard for Mobile Home Construction and Safety, Title 24, HUD Part 280). When such standard is not applicable, use the Standard for Manufactured Home Installations, ANSI A225.1/NFPA 501A or with local codes.

In Canada, the installation of this range must conform with the current standards CAN/CSA-A240-latest edition, or with local codes.

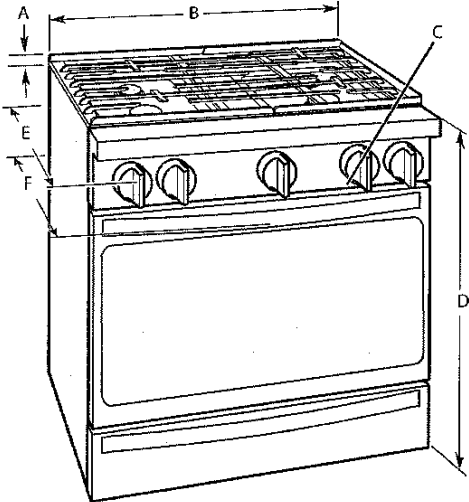
Mobile Home Installations Require:

- When this range is installed in a mobile home, it must be secured to the floor during transit. Any method of securing the range is adequate as long as it conforms to the standards listed above.

Product Dimensions

These instructions cover several models. Your model may appear different from the models depicted. Dimensions given are maximum dimensions across all models.

Model WEG750



- A. 13¹/₁₆" (3.0 cm) height from cooktop to top of vent
- B. 29⁷/₈" (75.9 cm)
- C. Model/serial/rating plate (located behind the oven door on the top right-hand side of the oven frame)
- D. 36" (91.4 cm) height to top of cooktop edge with leveling legs screwed in all the way*
- E. 27" (68.8 cm) max. depth from front of console to back of range
- F. 28⁵/₈" (72.7 cm) max. depth from handle to back of range

IMPORTANT: Range must be level after installation. Follow the instructions in the "Level Range" section. Using the cooktop as a reference for leveling the range is not recommended.

* Range can be raised approximately 1" (2.5 cm) by adjusting the leveling legs.



SEE ATTACHED FOR SIGNATURES



SEE ATTACHED FOR SIGNATURES

Lot: 54 Hawelock Corners P#1: 4A
 R: 30" Gas Slidin Stove SPEL's CON'T

Mobile Home - Additional Installation Requirements
 The installation of this range must conform to the Manufactured Home Construction and Safety Standard, Title 24 CFR, Part 3280 (formerly the Federal Standard for Mobile Home Construction and Safety, Title 24, HUD Part 280). When such standard is not applicable, use the Standard for Manufactured Home Installations, ANSI A225.1/NFPA 501A or with local codes. In Canada, the installation of this range must conform with the current standards CAN/CSA-A240-latest edition, or with local codes.

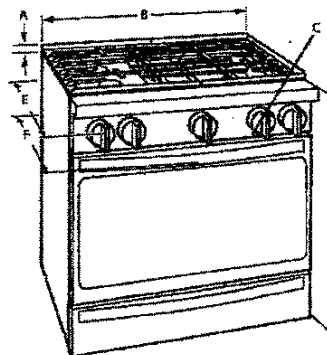
Mobile Home Installations Require:

- When this range is installed in a mobile home, it must be secured to the floor during transit. Any method of securing the range is adequate as long as it conforms to the standards listed above.

Product Dimensions

These instructions cover several models. Your model may appear different from the models depicted. Dimensions given are maximum dimensions across all models.

Model WEG750



- A. 14" (35.6 cm) height from cooktop to top of vent
- B. 29 1/2" (75.3 cm)
- C. Model/serializing plate (located behind the oven door on the top right-hand side of the oven frame)
- D. 36" (91.4 cm) height to top of cooktop edge with leveling legs screwed in all the way
- E. 27" (68.8 cm) max. depth from front of console to back of range
- F. 28 1/2" (72.7 cm) max. depth from handle to back of range

IMPORTANT: Range must be level after installation. Follow the instructions in the "Level Range" section. Using the cooktop as a reference for leveling the range is not recommended.

* Range can be raised approximately 1" (2.5 cm) by adjusting the leveling legs.

→
 → Ushas George

Lot: 54 Havelock Corners PH-4A
Re: 30" Gas Slide'n Stove Spec's Count

Cabinet Dimensions

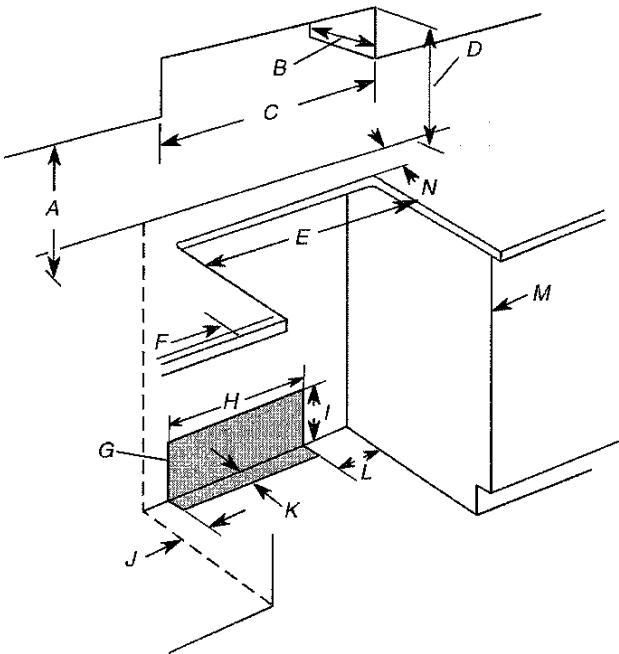
Cabinet opening dimensions shown are for 25" (64.0 cm) countertop depth, 24" (61.0 cm) base cabinet depth, and 36" (91.4 cm) countertop height.

IMPORTANT: If installing a range hood or microwave hood combination above the range, follow the range hood or microwave hood combination installation instructions for dimensional clearances above the cooktop surface.

Range may be installed next to combustible walls with zero clearance.

NOTE: When installed in a slide-in cutout, the front of oven door may protrude beyond the base cabinet.

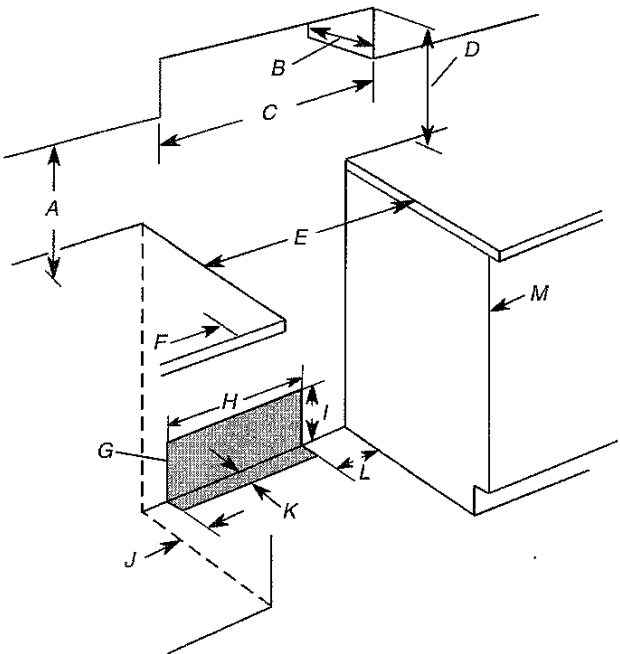
Slide-In Cutout



- A. 18" (45.7 cm) upper side cabinet to countertop
- B. 13" (33 cm) max. upper cabinet depth
- C. 30" (76.2 cm) min. opening width
- D. For minimum clearance to top of cooktop, see NOTE*.
- E. 30" (76.2 cm) min. opening width
- F. 3" (7.6 cm) min. clearance from both sides of range to side wall or other combustible material
- G. The shaded area is recommended for installation of rigid gas pipe and grounded outlet.
- H. 13 1/8" (33.3 cm)
- I. 7 1/16" (19.5 cm)
- J. 4 13/16" (12.2 cm)
- K. 3 1/16" (9.4 cm) plus measurement of N
- L. 12" (30.5 cm)
- M. Cabinet door or hinges should not extend into the cutout.
- N. Remaining counter depth should not exceed 2 1/4" (5.7 cm)

***NOTE:** 24" (61.0 cm) minimum when bottom of wood or metal cabinet is shielded by not less than 1/4" (6.4 mm) flame retardant millboard covered with not less than No. 28 MSG sheet steel, 0.015" (0.4 mm) stainless steel, 0.024" (0.6 mm) aluminum or 0.020" (0.5 mm) copper.
30" (76.2 cm) minimum clearance between the top of the cooking platform and the bottom of an uncovered wood or metal cabinet.

Freestanding Cutout



- A. 18" (45.7 cm) upper side cabinet to countertop
- B. 13" (33 cm) max. upper cabinet depth
- C. 30" (76.2 cm) min. opening width
- D. For minimum clearance to top of cooktop, see NOTE*.
- E. 30" (76.2 cm) min. opening width
- F. 3" (7.6 cm) min. clearance from both sides of range to side wall or other combustible material
- G. The shaded area is recommended for installation of rigid gas pipe and grounded outlet.
- H. 13 1/8" (33.3 cm)
- I. 7 1/16" (19.5 cm)
- J. 4 13/16" (12.2 cm)
- K. 3 1/16" (9.4 cm)
- L. 12" (30.5 cm)
- M. Cabinet door or hinges should not extend into the cutout.

→ SEE ATTACHED FOR SIGNATURES
→ SEE ATTACHED FOR SIGNATURES

Lot: 54 Havelock Corners PH-4A
 Re: 30" Gas Slide'n Stove Specs Count

Cabinet Dimensions

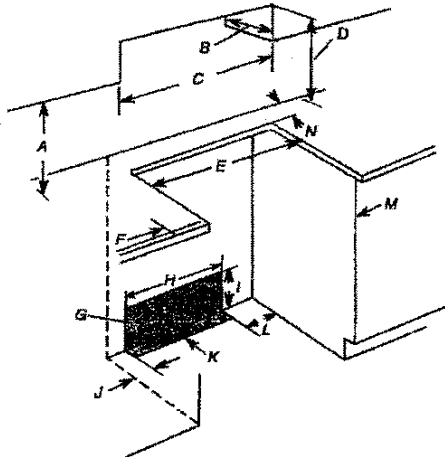
Cabinet opening dimensions shown are for 25" (64.0 cm) countertop depth, 24" (61.0 cm) base cabinet depth, and 36" (91.4 cm) countertop height.

IMPORTANT: If installing a range hood or microwave hood combination above the range, follow the range hood or microwave hood combination installation instructions for dimensional clearances above the cooktop surface.

Range may be installed next to combustible walls with zero clearance.

NOTE: When installed in a slide-in cutout, the front of oven door may protrude beyond the base cabinet.

Slide-In Cutout

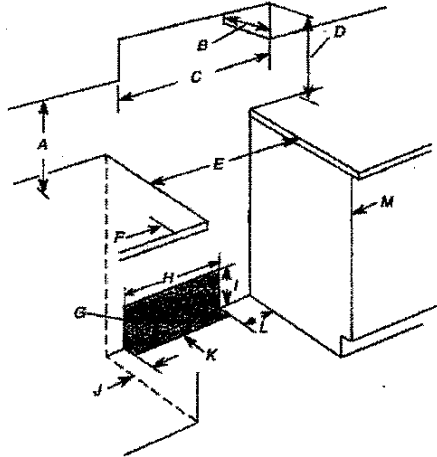


- A. 18" (45.7 cm) upper side cabinet to countertop
- B. 13" (33 cm) max. upper cabinet depth
- C. 30" (76.2 cm) min. opening width
- D. 30" (76.2 cm) min. opening width
- E. 30" (76.2 cm) min. opening width
- F. 3" (7.6 cm) min. clearance from both sides of range to side wall or other combustible material
- G. The shaded area is recommended for installation of rigid gas pipe and grounded outlet.
- H. 13 1/4" (33.3 cm)
- I. 7 1/4" (19.5 cm)
- J. 4 7/8" (12.2 cm)
- K. 3 1/2" (8.4 cm) plus measurement of N
- L. 12" (30.5 cm)
- M. Cabinet door or hinges should not extend into the cutout.
- N. Remaining counter depth should not exceed 2 1/4" (5.7 cm)

* **NOTE:** 24" (61.0 cm) minimum when bottom of wood or metal cabinet is shielded by not less than 1/4" (6.4 mm) flame retardant millboard covered with not less than No. 28 MSG sheet steel, 0.015" (0.4 mm) stainless steel, 0.024" (0.6 mm) aluminum or 0.020" (0.5 mm) copper.

30" (76.2 cm) minimum clearance between the top of the cooking platform and the bottom of an uncovered wood or metal cabinet.

Freestanding Cutout

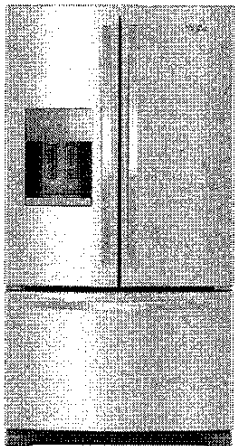


- A. 18" (45.7 cm) upper side cabinet to countertop
- B. 13" (33 cm) max. upper cabinet depth
- C. 30" (76.2 cm) min. opening width
- D. 30" (76.2 cm) min. opening width
- E. 30" (76.2 cm) min. opening width
- F. 3" (7.6 cm) min. clearance from both sides of range to side wall or other combustible material
- G. The shaded area is recommended for installation of rigid gas pipe and grounded outlet.
- H. 13 1/4" (33.3 cm)
- I. 7 1/4" (19.5 cm)
- J. 4 7/8" (12.2 cm)
- K. 3 1/2" (8.4 cm) plus measurement of N
- L. 12" (30.5 cm)
- M. Cabinet door or hinges should not extend into the cutout.

→
 → Ushar George

Lot: 54 Havelock Corners PH: 4A
Re: FRIDGE SPEC'S

Prepared by
Josh Robins
josh@noobody.com



36-inch Wide French Door Refrigerator in
Fingerprint-Resistant Stainless Steel - 25 cu. ft.

WRF555SDFZ

Available Finishes/Colours

WRF555SDFZ
FingerPrint Resistant Stainless Steel

Dimensions	
Depth	35 1/4
Height	70 1/8
Width	35 5/8

Details	
Cooling Type	Single Evaporator
Counter Depth	No

Configuration and Overview	
Advance Foam Insulation	99.9% lower Global Warming Potential and Better Energy Performance
Counter Depth	No
Number of Doors	3

Controls	
Control Type	Electronic
Air Filter Indicator/Reset	No
Automatic Defrost	Yes
Verrouillage des commandes	Yes
LCD Touch Screen	No
Door Ajar/Open Alarm	Yes
Max Cool/Fast Cool	PowerCold
Water Filter Indicator/Reset	Yes

Organize foods for your family in this Whirlpool® french door refrigerator available in fingerprint-resistant stainless steel. A humidity-controlled double crisper and two-tier freezer storage provide plenty of room. Spillproof shelves help contain spills and for filtered water right at hand, this refrigerator features an exterior water dispenser with EveryDrop™ ice and water filtration.

Top Features
ENERGY STAR® Certified
Spillproof Shelves
Humidity-Controlled Double Crisper

Compatibility	
Connectivity	No
Works With	No

Details	
Advance Foam Insulation	99.9% lower Global Warming Potential and Better Energy Performance

Manuals & Literature:

[Dimension Guide](#) [Energy Guide](#)

[Use and Care Guide](#) [Warranty Information](#)

SEE ATTACHED FOR SIGNATURE



SEE ATTACHED FOR SIGNATURE



Because Whirlpool Corporation policy includes a continuous commitment to improve our products, we reserve the right to change materials and specifications without notice. Dimensions are for planning purposes only. For complete details, see Installation Instructions packed with product. Specifications subject to change without notice.

Lot: 54 Havelock Corners PH: 4A
Re: FRIDGE SPEC'S

Prepared by
Josh Robbins
josh@noobbody.com



36-inch Wide French Door Refrigerator in Fingerprint-Resistant Stainless Steel - 25 cu. ft.

WRF655SDFZ

Available Finishes/Colours

WRF655SDFZ
Fingerprint-Resistant Stainless Steel

Depth	35 1/4"	Cooling Type	Single Evaporator
Height	70 1/8"	Control Type	Electronic
Width	35 5/8"	Automatic Defrost	Yes
Advance Foam Insulation	96.9% lower Global Warming Potential and Better Energy Performance	Ice Maker	Yes
Number of Doors	3	LCD Touch Screen	No
Connectivity	No	Max CoolFast Cool	PowerGold
		Max CoolFast Cool	PowerGold

Organize foods for your family in this Whirlpool® French door refrigerator available in fingerprint-resistant stainless steel. A humidity-controlled double crisper and two-tier freezer storage provide plenty of room. Spillproof shelves help contain spills and for filtered water right at hand, this refrigerator features an exterior water dispenser with EveryDrop™ ice and water filtration.

ENERGY STAR® Certified

Humidity-Controlled Double Crisper

Manuals & Literature:

• Dimensions Guide • Energy Guide
• Use and Care Guide • Warranty Information

Advance Foam Insulation
96.9% lower Global Warming Potential and Better Energy Performance

→
→ Ushagege

Whirlpool

Because Whirlpool Corporation policy includes a continuous commitment to improve our products, we reserve the right to change materials and specifications without notice. Dimensions are for planning purposes only. For complete details, see installation instructions packed with product. Specifications subject to change without notice.

LOT: 54 Havelock Corners PH: 4A
Re: FRIDGE SPEC'S CONT.



French Door w/Ice Dispenser Refrigerator

PRODUCT MODEL NUMBERS

WRF555SDF WRF555SDH

Electrical: A 115-volt, 60 Hz, AC-only 15- or 20-amp fused, grounded electrical supply is required. It is recommended that a separate circuit serving only your refrigerator and approved accessories be provided. Use an outlet that cannot be turned off by a switch. Do not use an extension cord.

Water: A cold water supply with water pressure between 35 and 120 psi (241 and 827 kPa) is required to operate the water dispenser and ice maker. If you have questions about your water pressure, call a licensed, qualified plumber.

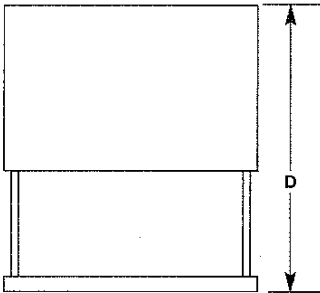
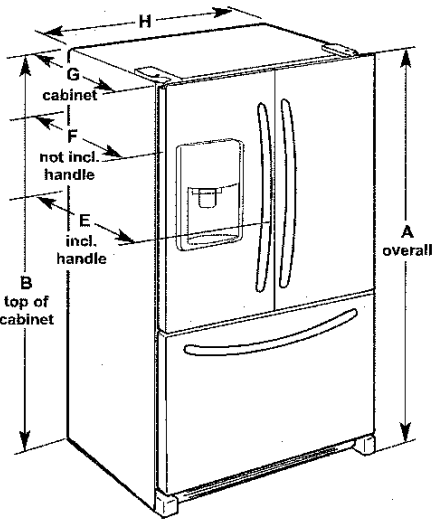
NOTE: If the water pressure is less than what is required, the flow of water from the water dispenser could decrease or ice cubes could be hollow or irregular shaped.

Reverse Osmosis Water Supply:

IMPORTANT: The pressure of the water supply coming out of a reverse osmosis system going to the water inlet valve of the refrigerator needs to be between 35 and 120 psi (241 and 827 kPa).

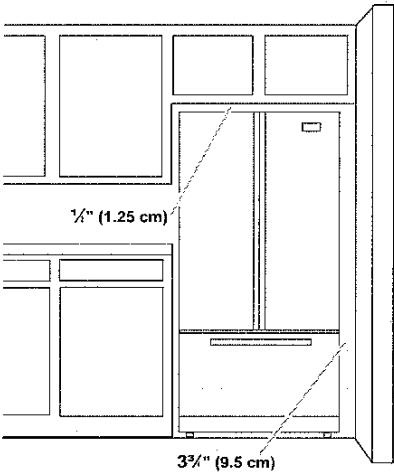
If a reverse osmosis water filtration system is connected to your cold water supply, the water pressure to the reverse osmosis system needs to be a minimum of 40 to 60 psi (276 to 414 kPa).

PRODUCT DIMENSIONS



Model Size	Height - Overall "A"	Height - Top of Cabinet "B"	Depth - Door Open 90° "C"	Depth - Drawer Open "D"	Depth - With Handles "E"	Depth - Without Handles "F"	Depth - Cabinet Only "G"	Width - Cabinet "H"
24.7 cu. ft.	70 1/4" (178.4 cm)	68 5/8" (174.3 cm)	48" (121.9 cm)	54" (137.2 cm)	35 1/4" (89.5 cm)	32 7/8" (83.5 cm)	29" (73.7 cm)	35 5/8" (90.5 cm)

LOCATION REQUIREMENTS



IMPORTANT: This refrigerator is designed for indoor, household use only. To ensure proper ventilation for your refrigerator, allow for a 1/2" (1.25 cm) of space on each side and at the top. Allow for a 1" (2.54 cm) space behind the refrigerator. If your refrigerator has an ice maker, allow extra space at the back for the water line connections. When installing your refrigerator next to a fixed wall, leave a 3 3/4" (9.5 cm) minimum space between the refrigerator and wall to allow the door to swing open.

NOTE: This refrigerator is intended for use in a location where the temperature ranges from a minimum of 55°F (13°C) to a maximum of 110°F (43°C). The preferred room temperature range for optimum performance, which reduces electricity usage and provides superior cooling, is between 60°F (15°C) and 90°F (32°C). It is recommended that you do not install the refrigerator near a heat source, such as an oven or radiator.

SEE ATTACHED FOR SIGNATURES

SEE ATTACHED FOR SIGNATURES

LOT: 54 Hawzlock Corners PH: 4A
Re: FRIDGE SPEC'S CONT.



French Door w/Ice Dispenser Refrigerator

PRODUCT MODEL NUMBERS
WRF555SDF WRF555SDH

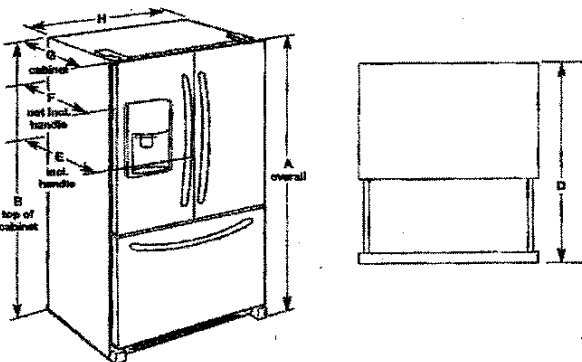
Electrical: A 115-volt, 60 Hz, AC-only 15- or 20-amp fused, grounded electrical supply is required. It is recommended that a separate circuit serving only your refrigerator and approved accessories be provided. Use an outlet that cannot be turned off by a switch. Do not use an extension cord.

Water: A cold water supply with water pressure between 35 and 120 psi (241 and 827 kPa) is required to operate the water dispenser and ice maker. If you have questions about your water pressure, call a licensed, qualified plumber.

NOTE: If the water pressure is less than what is required, the flow of water from the water dispenser could decrease or ice cubes could be hollow or irregular shaped.

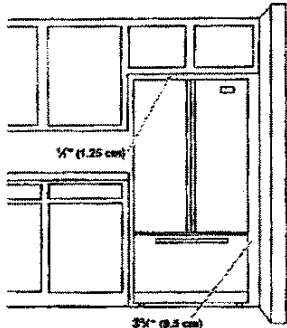
Reverse Osmosis Water Supply:
IMPORTANT: The pressure of the water supply coming out of a reverse osmosis system going to the water inlet valve of the refrigerator needs to be between 35 and 120 psi (241 and 827 kPa).
If a reverse osmosis water filtration system is connected to your cold water supply, the water pressure to the reverse osmosis system needs to be a minimum of 40 to 60 psi (276 to 414 kPa).

PRODUCT DIMENSIONS



Model Size	Height - Overall "A"	Height - Top of Cabinet "B"	Depth - Door Open 90° "C"	Depth - Drawer Open "D"	Depth - With Handles "E"	Depth - Without Handles "F"	Depth - Cabinet Only "G"	Width - Cabinet "H"
24.7 cu.ft.	70 1/4" (178.4 cm)	68 1/2" (174.3 cm)	46" (117.3 cm)	54" (137.2 cm)	35 1/4" (89.5 cm)	32 1/4" (82.5 cm)	27" (68.6 cm)	36 1/4" (92.6 cm)

LOCATION REQUIREMENTS



IMPORTANT: This refrigerator is designed for indoor, household use only. To ensure proper ventilation for your refrigerator, allow for a 1/2" (1.25 cm) of space on each side and at the top. Allow for a 1" (2.54 cm) space behind the refrigerator. If your refrigerator has an ice maker, allow extra space at the back for the water line connections. When installing your refrigerator next to a fixed wall, leave a 3 1/2" (9.5 cm) minimum space between the refrigerator and wall to allow the door to swing open.

NOTE: This refrigerator is intended for use in a location where the temperature ranges from a minimum of 55°F (13°C) to a maximum of 110°F (43°C). The preferred room temperature range for optimum performance, which reduces electricity usage and provides superior cooling, is between 68°F (15°C) and 90°F (32°C). It is recommended that you do not install the refrigerator near a heat source, such as an oven or radiator.

→
→ *Ushas George*