

Kingsmen (Thames) Inc. / Havelock Corners (Kingsmen)

Lot/Unit: 22 Phase/Building: 4A Model/Floor Plan: James (3601) Elev B 4 Bed - 2+1 Bath

CABINETRY APPLIANCE - FRIDGE

Inv.4599	1 - To supply & install 66CM DEEP FRIDGE ENCLOSURE - COUNTER DEPTH WITH - 1 WALL - 1 66CM DEEP GABLE AND 1 66CM DEEP CABINET - THIS IS NOT A ZERO CLEARANCE ENCLOSURE. STANDARD HEIGHTS AND WIDTHS WILL BE USED. - VIKING SERIES..see sketch # 1	
Line 58828	Note:	
14Apr20 / 23Apr20		

CABINETRY PANTRY

Inv.4599	2 - To supply & install a 24" , 2 door wide + - PANTRY 66 CM DEEP IN LIEU OF UPPER - BASE - COUNTER DEPTH - PRICE IS PER FOOT - VIKING SERIES in the kitchen... see sketch # 1	
Line 58729	Note:	
14Apr20 / 23Apr20		

CABINETRY VANITY

Inv.4599	1 - To supply & install a VANITY BANK OF DRAWERS - MAX. WIDTH 55CM - VIKING SERIES in the master ensuite bathroom... see sketch # 2	
Line 58727	Note:	
14Apr20 / 23Apr20		
Inv.4599	1 - To supply & install a VANITY BANK OF DRAWERS - MAX. WIDTH 55CM - VIKING SERIES in the main bathroom... see sketch # 2	
Line 58728	Note:	
14Apr20 / 23Apr20		

CABINETRY WALL AND HUTCH

Inv.4599	1 - To supply & install the UPPER ANGLE CORNER PER UNIT - VIKING SERIES ... see sketch # 1	
Line 58731	Note:	
14Apr20 / 23Apr20		

COUNTER TOP

Inv.4599	1 - As per shedule "PE": Vendor to include level 1, 3 cm granite or quatrz in the kitchen, as per plan, in lieu of the included laminate counter tops. Selections to be made from builders standard samples.	
Line 58711	Note:	
14Apr20 / 23Apr20		

ELECTRICAL

Inv.4599	1 - Relocate the std. exterior light at the garage.... see sketch # 1	
Line 58716	Note: This relocated light will be connected to an additional exterior light at the garage, both on the same standard switch.	
14Apr20 / 23Apr20		
Inv.4599	1 - To supply & install an additional exterior lights at the garage... see sketch # 1	
Line 58717	Note: This upgraded exterior light will be connected to the relocated exterior light at the garage.	
14Apr20 / 23Apr20		
Inv.4599	1 - To supply & install an additional exterior light at the Portico... see sketch # 1	
Line 58718	Note: Have this additional exterior light connected to the standard exterior light at the Portico.	
14Apr20 / 23Apr20		

Kingsmen (Thames) Inc. / Havelock Corners (Kingsmen)

Lot/Unit: 22 Phase/Building: 4A Model/Floor Plan: James (3601) Elev B 4 Bed - 2+1 Bath

Inv. 4599 Line 58719 14Apr20 / 23Apr20	1 - To supply & install the standard T.V. rough in in the great room and master bedroom.... see sketch # 1 & # 2 Note: 	
Inv. 4599 Line 58720 14Apr20 / 23Apr20	1 - To supply & install the standard Phone rough in in the great room, master bedroom and Bedroom # 2... see sketch #1 & # 2 Note: 	
Inv. 4599 Line 58721 14Apr20 / 23Apr20	1 - To SUPPLY AND INSTALL AN ADDITIONAL BASIC RECEPTACLE (NOT DEDICATED) at approx. 66" + - up from the floor centered +- to the F/P mantle Note: In the Great room... see sketch # 1 This is for a future wall mount T.V. NOTE: PURCHASER HAS NOT PURCHASED THE CONDUIT PIPE	
Inv. 4599 Line 58722 14Apr20 / 23Apr20	1 - To supply & install AN ADDITIONAL SINGLE POLE SWITCH, this switch will be connected to the upgraded capped ceiling electrical over the breakfast bar in the kitchen. Note: 	
Inv. 4599 Line 58723 14Apr20 / 23Apr20	1 - To SUPPLY AND INSTALL EXTRA CEILING BOX ROUGH IN CAPPED (DOES NOT INCLUDE SWITCH) over the breakfast bar in the kitchen.... see sketch # 1 Note: This ceiling elec. box will be connected to a sep. switch, switch is sold sep. 	
Inv. 4599 Line 58724 14Apr20 / 23Apr20	1 - Relocate the std. ceiling light from the upper stair landing to the O.T.B. area on the second floor.... see sketch # 2 Note: 	
Inv. 4599 Line 58725 14Apr20 / 23Apr20	1 - Reinforce the light at the O.T.B. area on the second floor.... see sketch # 2 Note: 	

HEATING AND AIR CONDITIONING

Inv. 4599 Line 58709 14Apr20 / 23Apr20	1 - As per shedule "PE": Vendor to install capped gas line (rough in only) at rear of home for future BBQ location. Location to be finalized at vendors sole discretion. Note: 	
Inv. 4599 Line 58710 14Apr20 / 23Apr20	1 - As per shedule "PE": Vendor to supply & install air conditioning unit, sized accordingly, from vendors standard samples. Note: 	

MISCELLANEOUS

Inv. 4599 Line 58712 14Apr20 / 23Apr20	1 - As per shedule "PE": Vendor to allow purchaser to select any stain from the vendors stard stains for the main floor hardwood and the staircase and handrail. Note: 	
--	--	--



CONSTRUCTION SUMMARY

Kingsmen (Thames) Inc. / Havelock Corners (Kingsmen)

Lot/Unit: 22 Phase/Building: 4A Model/Floor Plan: James (3601) Elev B 4 Bed - 2+1 Bath

Inv.4599	1 - To supply & install a gas rough in capped with the 110V electrical outlet for a future gas stove in the kitchen.	
Line 58715	Note:	
14Apr20 / 23Apr20		

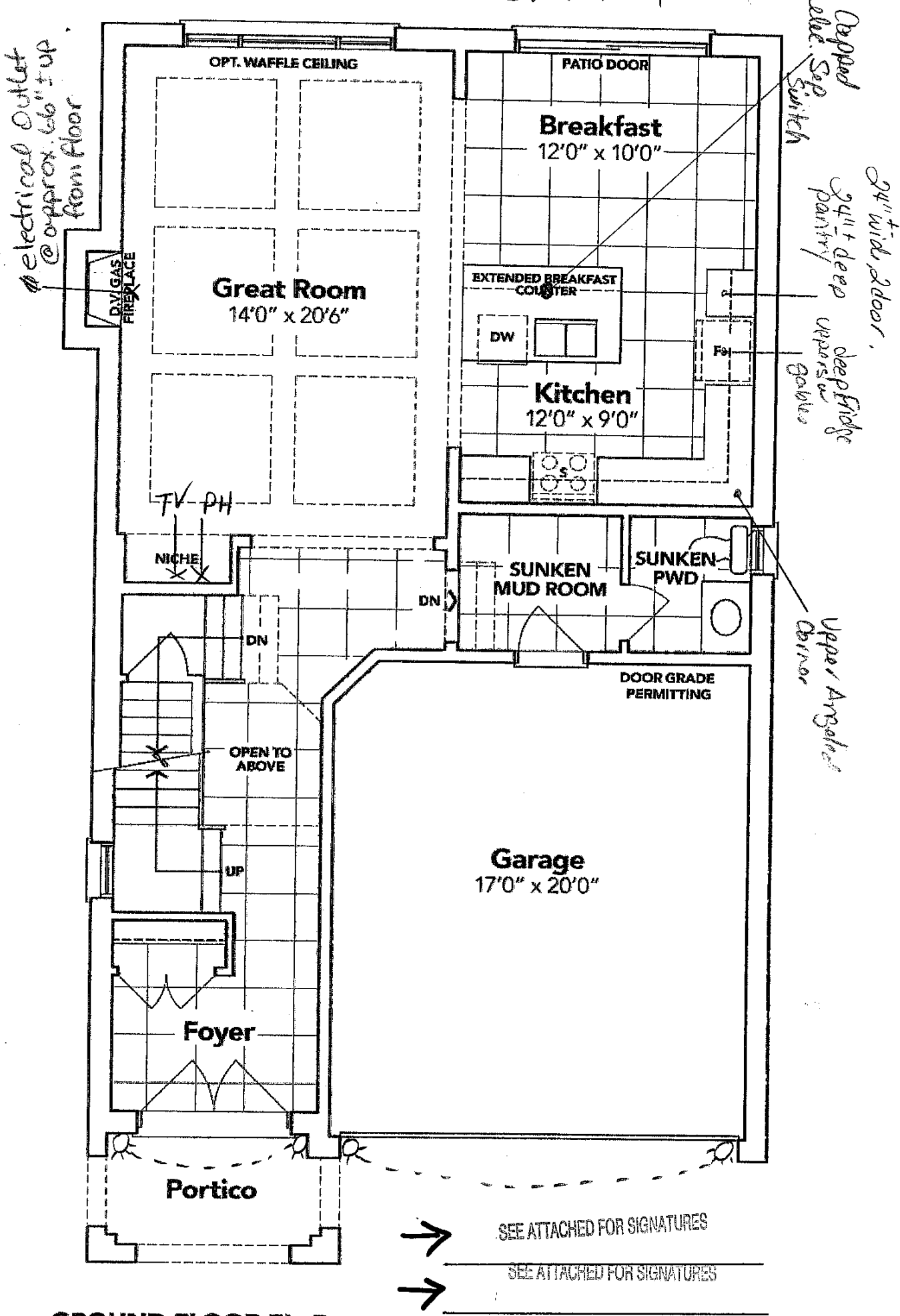
EXTRAS AS PER OFFER

Note:	
-------	--

SCHEDULE "B-1"
Floor Plan

Lot 22
Phase 4A
Model: James (3601) Elev B 4 Bed - 2+1 Bath
Standard

Sketch #1



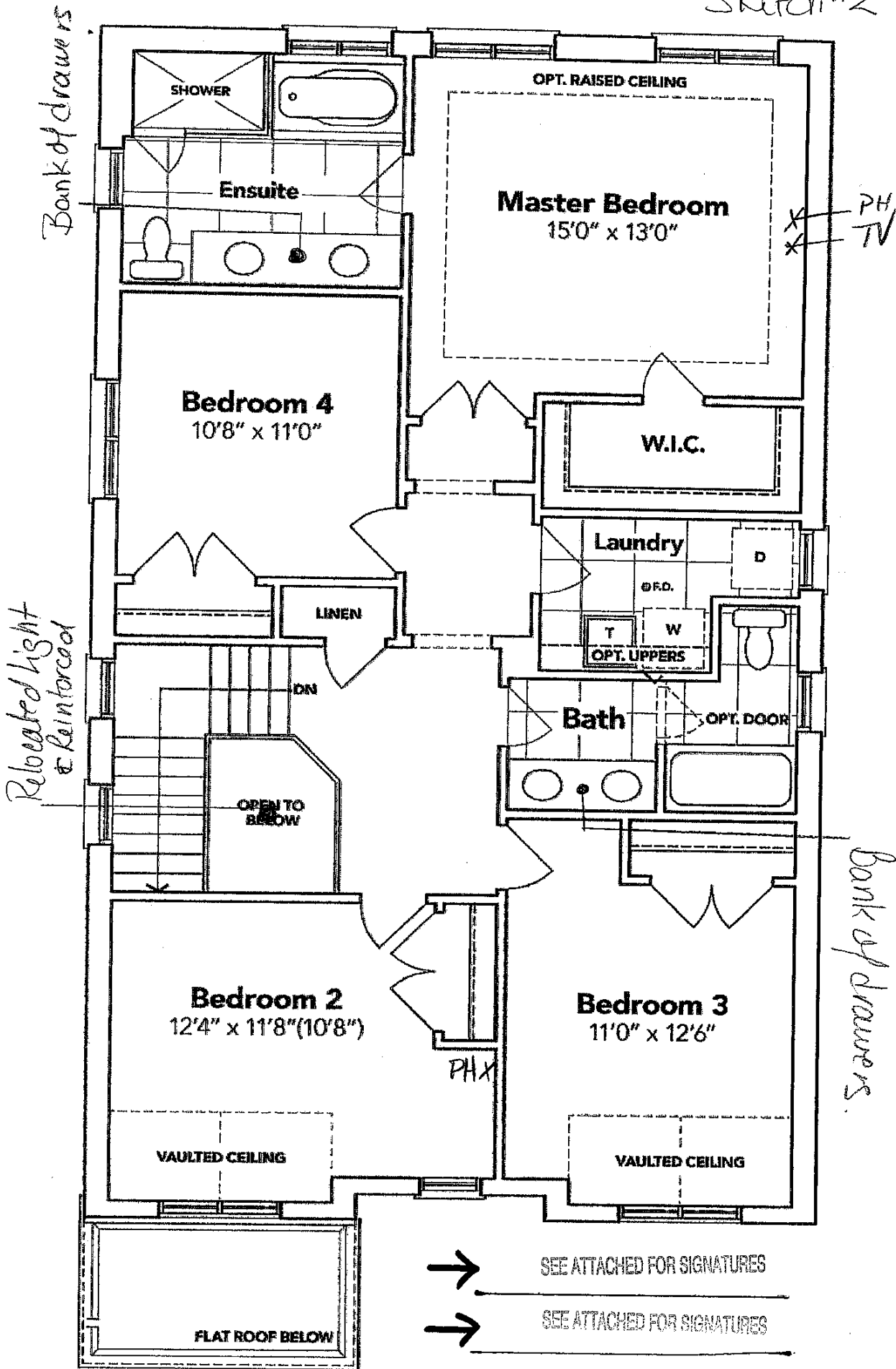
GROUND FLOOR EL. B

The floor plans and elevations shown are pre-construction plans and may be revised or improved as necessitated by architectural controls and the construction process. The measurements adhere to the rules and regulations of the TARION Warranty Corporation's official method for the calculation of floor area. Materials, specifications and floor plans are subject to change without notice. All house renderings are artist's concept only. Actual usable floor space may vary from the stated floor area. All options shown are upgrades. E. & O. E.

SCHEDULE "B-1"
Floor Plan

Lot 22
Phase 4A
Model: James (3601) Elev B 4 Bed - 2+1 Bath
Standard

Sketch #2



SECOND FLOOR EL. B

The floor plans and elevations shown are pre-construction plans and may be revised or improved as necessitated by architectural controls and the construction process. The measurements adhere to the rules and regulations of the TARION Warranty Corporation's official method for the calculation of floor area. Materials, specifications and floor plans are subject to change without notice. All house renderings are artist's concept only. Actual usable floor space may vary from the stated floor area. All options shown are upgrades. 3. & O. E.