



CONSTRUCTION SUMMARY

Kingsmen (Thames) Inc. / Havelock Corners (Kingsmen)

Lot/Unit: 50    Phase/Building: 4A    Model/Floor Plan: Louis (4203) Elev B 4 Bed - 4+1 Bath

CABINETRY MICROWAVE OVEN STOVE COOKTOP

Inv.4611	1 - To supply & install a WALL CABINET WITH SHELF FOR MICROWAVE - FINISHED INTERIOR - OPENING 24INCHESW X 13 3 - 4INCHESH X 17INCHESD - CLASSIC SERIES...see sketch # 1	
Line 58845	Note: Electrical outlet is sold sep. but needs to be purchased with this upgrade.	
21Apr20 / 22Apr20		

ELECTRICAL

Inv.4611	1 - To SUPPLY AND INSTALL AN ADDITIONAL BASIC RECEPTACLE (DEDICATED CIRCUIT AND INCLUDES ARC FAULT BREAKER) for the future microwave shelf	
Line 58846	Note:	
21Apr20 / 22Apr20		
Inv.4611	1 - To supply & install the standard T.V. rough in in the great room and master bedroom...see sketch # 1 & # 2	
Line 58833	Note: Install the std. T.V. rough in in the great room at approx. 66" +- up from the floor centered + - to the F/P mantle	
21Apr20 / 22Apr20		
This is for a future wall mount T.V.		
Inv.4611	1 - To supply & install the standard Phone rough in in the great room, master bedroom and bedroom # 4... see sketch #1 & # 2	
Line 58834	Note: Install the std. phone rough in in the great room at approx. 66" +- up from the floor centered + - to the F/P mantle	
21Apr20 / 22Apr20		
This is for a future wall mount T.V.		
Inv.4611	1 - To SUPPLY AND INSTALL AN ADDITIONAL BASIC RECEPTACLE (NOT DEDICATED) at approx. 66 " + - up from the floor centered +- to the F/P mantle	
Line 58835	Note: in the great room... see sketch # 1	
21Apr20 / 22Apr20		
This is for a future wall mount t.v.		
Inv.4611	1 - Relcoate the std. ceiling light from the upper stair landing to the O.T.B. area on the second floor... see sketch # 2	
Line 58836	Note:	
21Apr20 / 22Apr20		

HEATING AND AIR CONDITIONING

MISCELLANEOUS

Inv.4611	1 - Reduce the size of the W.I.C. in the master bedroom and create a W.I.C. ( approx. 4' x 5' ) in bedroom #2... see sketch # 2	
Line 58832	Note: to install the standard door and ceiling light..	
21Apr20 / 22Apr20		

EXTRAS AS PER OFFER

VENDOR TO INSTALL CAPPED GAS LINE (ROUGH-IN ONLY) AT REAR OF HOME FOR FUTURE BBQ LOCATION. LOCATION TO BE FINALIZED AT VENDORS SOLE DISCRETION. Worksheet Note:	
VENDOR TO SUPPLY & INSTALL AIR CONDITIONING UNIT, SIZED ACCORDINGLY, FROM VENDORS STANDARD SAMPLES. Worksheet Note:	

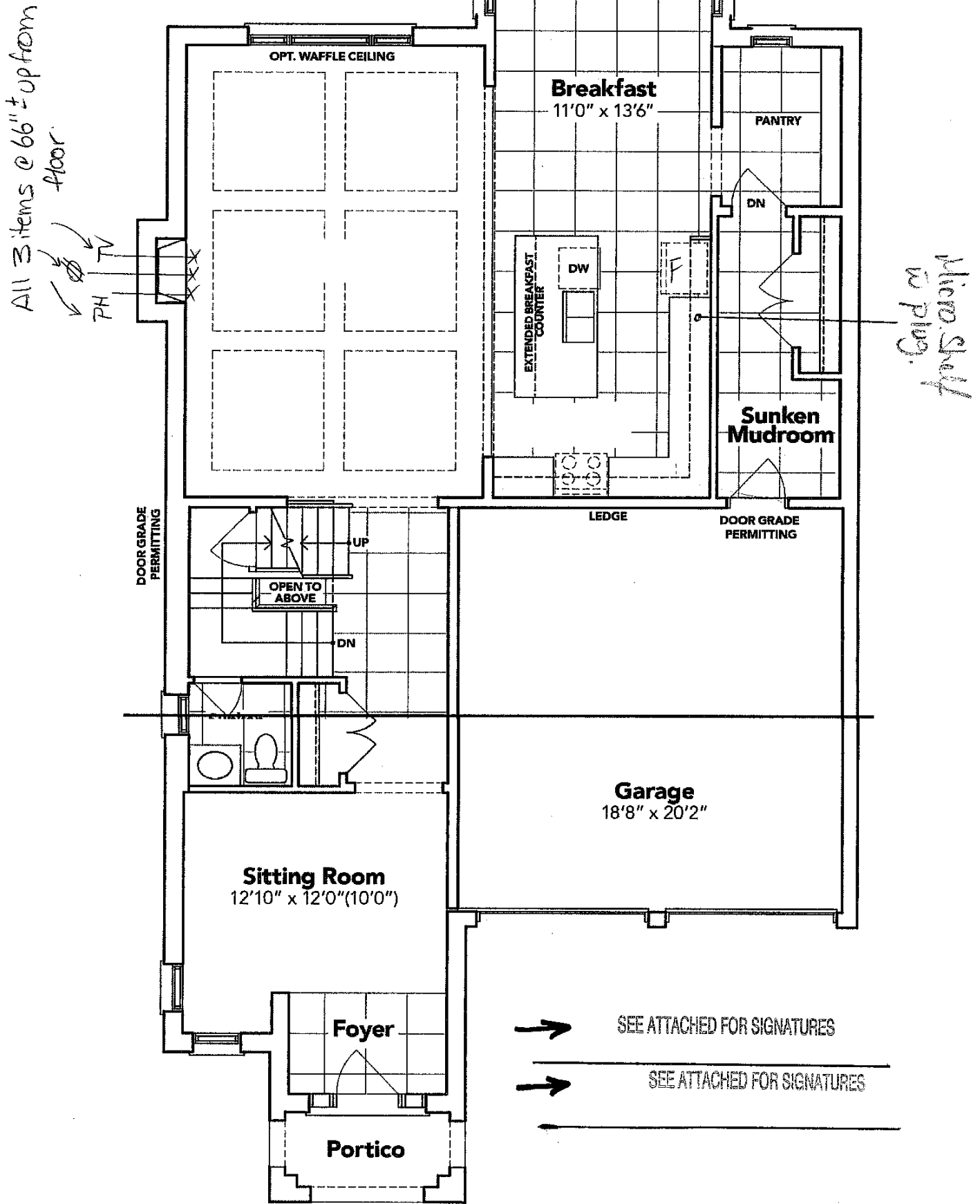
**Kingsmen (Thames) Inc. / Havelock Corners (Kingsmen)**

**Lot/Unit: 50    Phase/Building: 4A    Model/Floor Plan: Louis (4203) Elev B 4 Bed - 4+1 Bath**

SCHEDULE "B-1"  
Floor Plan

LOT 50  
Phase 4A  
Model: Louis (4203) Elev B 4 Bed - 4+1 Bath  
Standard

LOT: 50  
Sketch  
#1

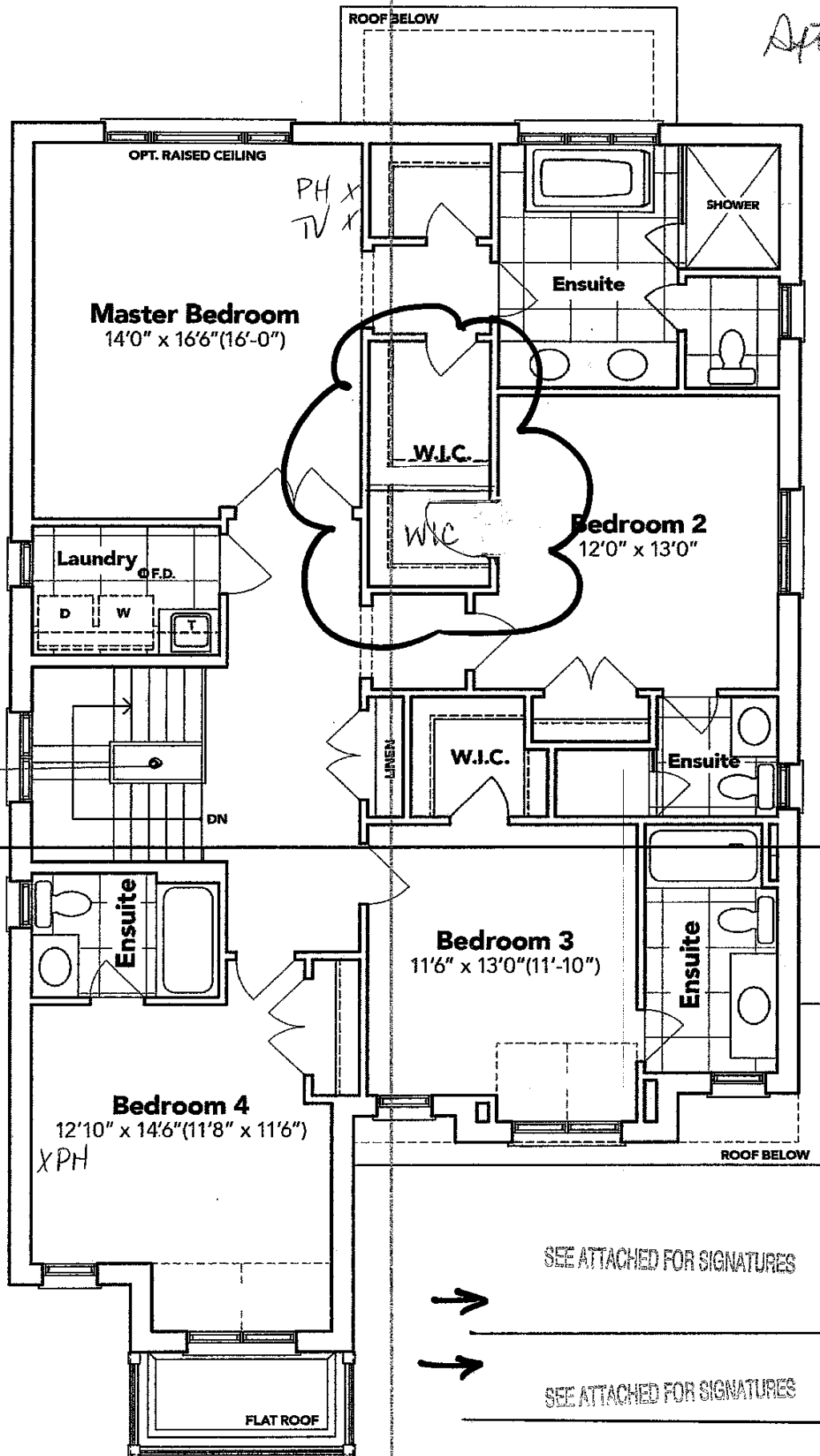


PART. GROUND FLOOR EL. B

The floor plans and elevations shown are pre-construction plans and may be revised or improved as necessitated by architectural controls and the construction process. The measurements adhere to the rules and regulations of the TARION Warranty Corporation's official method for the calculation of floor area. Materials, specifications and floor plans are subject to change without notice. All house renderings are artist's concept only. Actual usable floor space may vary from the stated floor area. All options shown are upgrades. E. & O. E.

After

Relocated light



PART. SECOND FLOOR EL. B

The floor plans and elevations shown are pre-construction plans and may be revised or improved as necessitated by architectural controls and the construction process. The measurements adhere to the rules and regulations of the TARION Warranty Corporation's official method for the calculation of floor area. Materials, specifications and floor plans are subject to change without notice. All house renderings are artist's concept only. Actual usable floor space may vary from the stated floor area. All options shown are upgrades. E. & O. E.