



CONSTRUCTION SUMMARY

Kingsmen (Thames) Inc. / Havelock Corners (Kingsmen)

Lot/Unit: 70 Phase/Building: 4A Model/Floor Plan: Spencer (4204) Elev C 4 Bed - 4+1 Bath

.Base Cabinets

Inv.4581	1 - To supply & install the pots and pans drawers in the kitchen using the std. level of cabinetry see sketch # 1	
Line 58441	Note:	
30Mar20 / 6Apr20		

.Laminate Counter Tops and Accessories

Inv.4581	1 - Close off the wall between the kitchen and Dining room area. Extend the upper and lower base cabinets along with the Level 1, 2 cm granite or quartz, upper and lower cabinets and shift the standard fridge opening... see sketch # 1	
Line 58413	Note:	
30Mar20 / 6Apr20		

.Miscellaneous

CABINETRY

Inv.4581	1 - Purchaser has upgraded to a 30" chimney hood fan.	
Line 58617	Note:	
30Mar20 / 6Apr20		

CABINETRY MICROWAVE OVEN STOVE COOKTOP

Inv.4601	1 - To supply & install a WALL CABINET WITH SHELF FOR MICROWAVE - FINISHED INTERIOR - OPENING 24INCHESW X 13 3 - 4INCHESH X 17INCHESD - CLASSIC SERIES... see sketch # 3	
Line 58764	Note: Electrical outlet is sold sep.	
15Apr20 / 16Apr20		

CABINETRY VANITY

Inv.4601	1 - To supply & instal a VANITY BANK OF DRAWERS - MAX. WIDTH 55CM - CLASSIC SERIES in the master ensuite...see sketch # 4	
Line 58766	Note:	
15Apr20 / 16Apr20		

Countertop

Electrical

Inv.4581	1 - To supply & install the standard T.V. rough in in the great room and master bedroom.... see sketch # 1 & #2	
Line 58419	Note:	
30Mar20 / 6Apr20		
Inv.4581	1 - To supply & install the standard phone rough in in the great room, master bedroom and media room.... see sketch #1 & #2	
Line 58420	Note:	
30Mar20 / 6Apr20		
Inv.4581	1 - To supply & install an additional T.V. rough in in the media room.... see sketch # 2	
Line 58421	Note:	
30Mar20 / 6Apr20		



CONSTRUCTION SUMMARY

Kingsmen (Thames) Inc. / Havelock Corners (Kingsmen)

Lot/Unit: 70 Phase/Building: 4A Model/Floor Plan: Spencer (4204) Elev C 4 Bed - 4+1 Bath

Inv.4581 Line 58428 30Mar20 / 6Apr20	1 - Reinforce the standard ceiling light in the dining room.... see sketch # 1 Note: 	
Inv.4581 Line 58436 30Mar20 / 6Apr20	1 - Relcoate the std. ceiling light from the upper stair landing to the O.T.B. area on the second floor.... see sketch # 2 Note: 	
Inv.4581 Line 58437 30Mar20 / 6Apr20	1 - Reinforce the relocated light at the O.T.B. area on the second floor.... see sketch # 2 Note: 	
Inv.4581 Line 58438 30Mar20 / 6Apr20	1 - Relocate the std. ceiling light in the master bedroom, add a second ceiling light both connected to the std. switch... see sketch # 2 Note: 	
Inv.4581 Line 58449 30Mar20 / 6Apr20	1 - To supply & install a receptacle at approx. 66 " + - up from the floor centered + - to the F/P mantle.... see sketch # 1 Note: This is for a future wall mount T.V. 	
Inv.4581 Line 58450 30Mar20 / 6Apr20	1 - To supply & install a conduit pipe at approx. 66" + - up from the floor next to + - the upgraded receptacle , centered + - to the F/P mantle and terminated next to + - the std. T.V. and Phone rough in the great room... see sketch # 1 Note: This is for a future wall mount T.V. 	
Inv.4581 Line 58616 30Mar20 / 6Apr20	1 - To supply & install the CYCLONE 30" Chimney hood fan model: SCB72230 in stainless steel in the kitchen in lieu of the standard hood fan.... see spec's attached. Note: 	
Inv.4601 Line 58765 15Apr20 / 16Apr20	1 - To SUPPLY AND INSTALL AN ADDITIONAL BASIC RECEPTACLE (DEDICATED CIRCUIT AND INCLUDES ARC FAULT BREAKER) at the mircrowave shelf.... see sketch # 3 Note: Microwave shelf is sold sep. 	

Fireplace

Inv.4581 Line 58447 30Mar20 / 6Apr20	1 - To supply & install the EFS1 fireplace mantle in white in lieu of the standard mantle in the great room... see spec's attached Note: 	
--	---	--

Heating And Air Conditioning

MISCELLANEOUS

Plumbing

Inv.4581 Line 58418 30Mar20 / 6Apr20	1 - To supply & install the Mirolin BROOKE free standing tub in the master ensuite in lieu of the standard free standing tub..... see spec's Note: 	
--	---	--



CONSTRUCTION SUMMARY

Kingsmen (Thames) Inc. / Havelock Corners (Kingsmen)

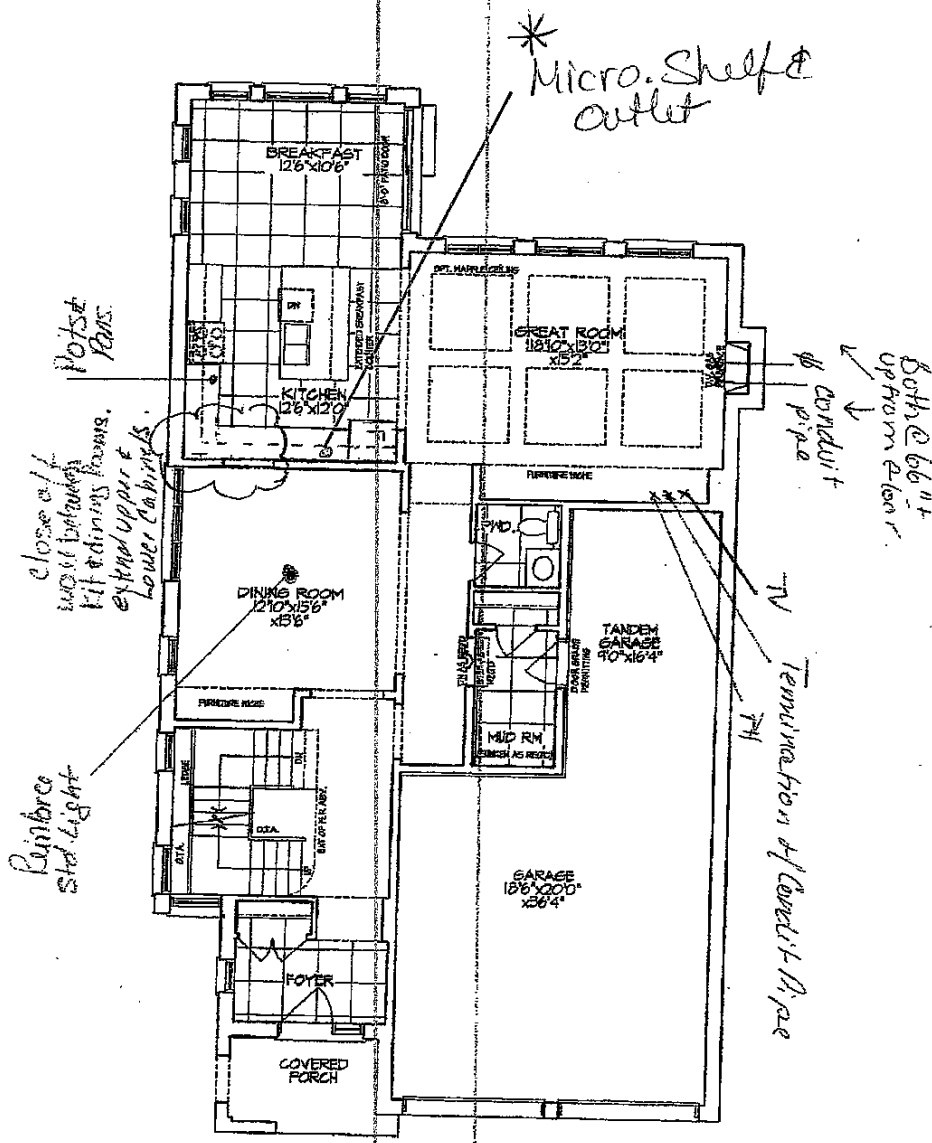
Lot/Unit: 70 Phase/Building: 4A Model/Floor Plan: Spencer (4204) Elev C 4 Bed - 4+1 Bath

EXTRAS AS PER OFFER

VENDOR TO INSTALL CAPPED GAS LINE (ROUGH-IN ONLY) AT REAR OF HOME FOR FUTURE BBQ LOCATION. LOCATION TO BE FINALIZED AT VENDORS SOLE DISCRETION. <i>Worksheet</i> Note:	
VENDOR TO INSTALL GAS LINE (ROUGH-IN ONLY) TO KITCHEN IN AT STOVE LOCATION (AS PER PLAN) TO INCLUDE 110V CODE REQUIREMENT. <i>Worksheet</i> Note:	
VENDOR TO SUPPLY & INSTALL AIR CONDITIONING UNIT, SIZED ACCORDINGLY, FROM VENDORS STANDARD SAMPLES. <i>Worksheet</i> Note:	
VENDOR TO INCLUDE LEVEL 1, 2CM GRANITE OR QUARTZ IN ALL BATHROOMS, AS PER PLAN, IN LIEU OF THE INCLUDED LAMINATE COUNTER TOPS. SELECTIONS TO BE MADE FROM BUILDERS STANDARD SAMPLES. <i>Worksheet</i> Note:	
VENDOR TO INCLUDE WROUGHT IRON PICKETS THROUGHOUT IN LIEU OF INCLUDED WOOD PICKETS AS PER PLAN. THIS HAS NO CASH VALUE. TO BE SELECTED FROM BUILDERS STANDARDS. <i>Worksheet</i> Note:	

Sketch #3

CONFIRMED BY EMAIL



GROUND FLOOR PLAN

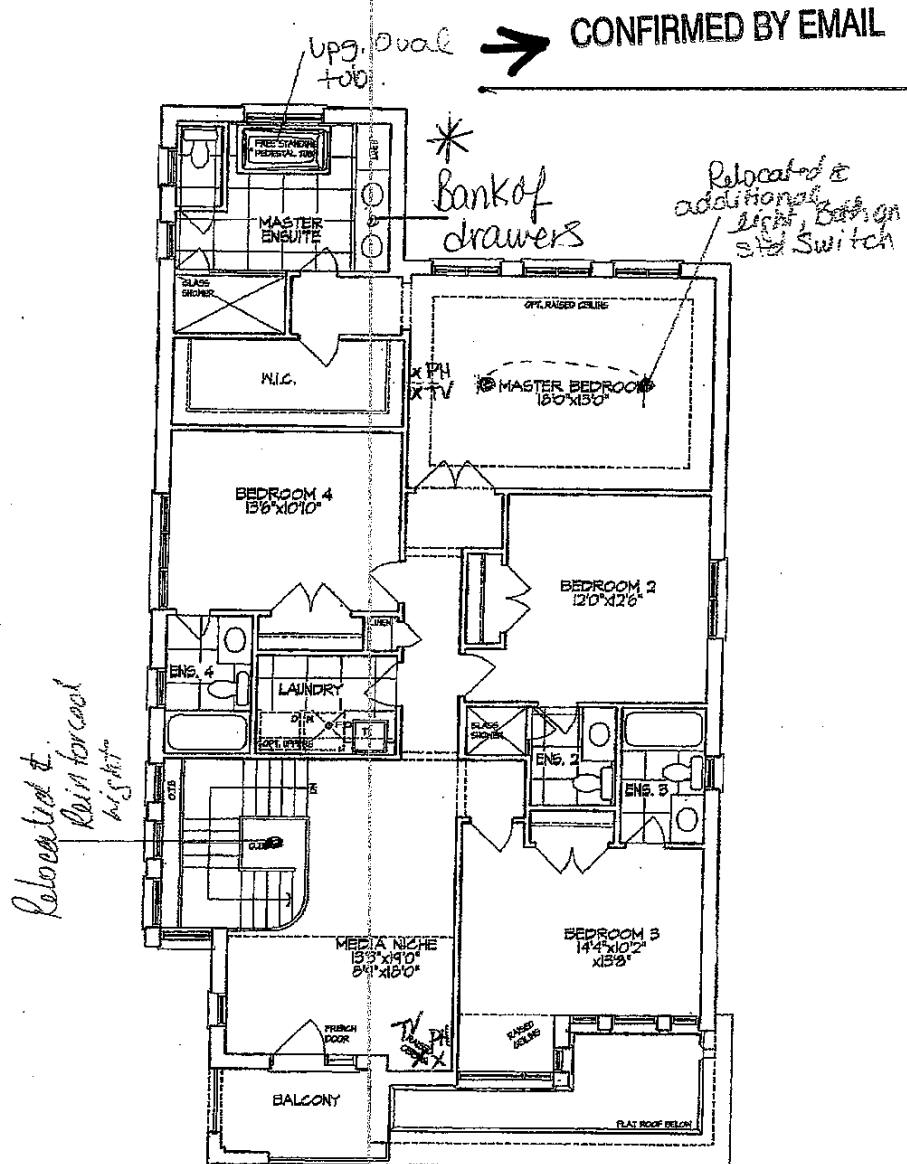
→ Phase

Lot 70 Phase 4A
Unit 4204 - El. C3
SPENCER - CORNER

Materials, specifications, and floor plans are subject to change without notice.
All renderings are artist conceptions. All floor plans are approximate dimensions.
Actual usable floor space may vary from the stated floor areas by +/- 5%.

S. A. A. R. I. (16)

Sketch #4



SECOND FLOOR PLAN

→ Sketch

Lot 70 Phase 4A
Unit 4204 - El. C3
SPENCER - CORNER

Materials, specifications, and floor plans are subject to change without notice.
All renderings are artist conceptions. All floor plans are approximate dimensions.
Actual usable floor space may vary from the stated floor area.

Schedule B-1 2/1