



CONSTRUCTION SUMMARY

Kingsmen (Thames) Inc. / Havelock Corners (Kingsmen)

Lot/Unit: 35 Phase/Building: 4A Model/Floor Plan: Edward (3602) Elev A 4 Bed - 2+1 Bath

COUNTER TOP

Inv.4588	1 - As per schedule "PE" : Vendor to include level 1, 2 cm granite or quartz in kitchen, as per plan, in lieu of the included laminate counter tops. Selections to be made from builders standard samples.	
Line 58565	Note:	
2Apr20 / 9Apr20		

ELECTRICAL

Inv.4588	1 - To supply & install the standard T.V. rough in in the great room and master bedroom....see sketch # 1 & # 2	
Line 58573	Note: Install the t.v. rough in at approx. 66 " + - up from the floor centered + - to the F/P mantle	
2Apr20 / 9Apr20		
Inv.4588	1 - To supply & install the standard Phone rough in in the kitchen, master bedroom and bedroom # 2...se sketch # 1 & # 2	
Line 58574	Note:	
2Apr20 / 9Apr20		
Inv.4588	1 - To SUPPLY AND INSTALL AN ADDITIONAL BASIC RECEPTACLE (NOT DEDICATED) at approx. 66" +- up from the floor centered to the F/P mantle in the great room..	
Line 58575	Note: See sketch # 1	
2Apr20 / 9Apr20		
Inv.4588	1 - To SUPPLY AND INSTALL EXTRA CEILING BOX ROUGH IN CAPPED (DOES NOT INCLUDE SWITCH) above the breakfast bar in the kitchen.... see sketch # 1	
Line 58577	Note: This rough in will be connected to a sep. switch, switch is sold sep.	
2Apr20 / 9Apr20		
Inv.4588	1 - To supply & install AN ADDITIONAL SINGLE POLE SWITCH connected to the upgraded capped elec. over the breakfast bar in the kitchen.	
Line 58578	Note:	
2Apr20 / 9Apr20		
Inv.4588	1 - Relocate the standard ceiling light from the upper stair landing to the O.T.B. are on the second floor.... see sketch # 2	
Line 58579	Note:	
2Apr20 / 9Apr20		

HARDWOOD

HEATING AND AIR CONDITIONING

MISCELLANEOUS



CONSTRUCTION SUMMARY

Kingsmen (Thames) Inc. / Havelock Corners (Kingsmen)

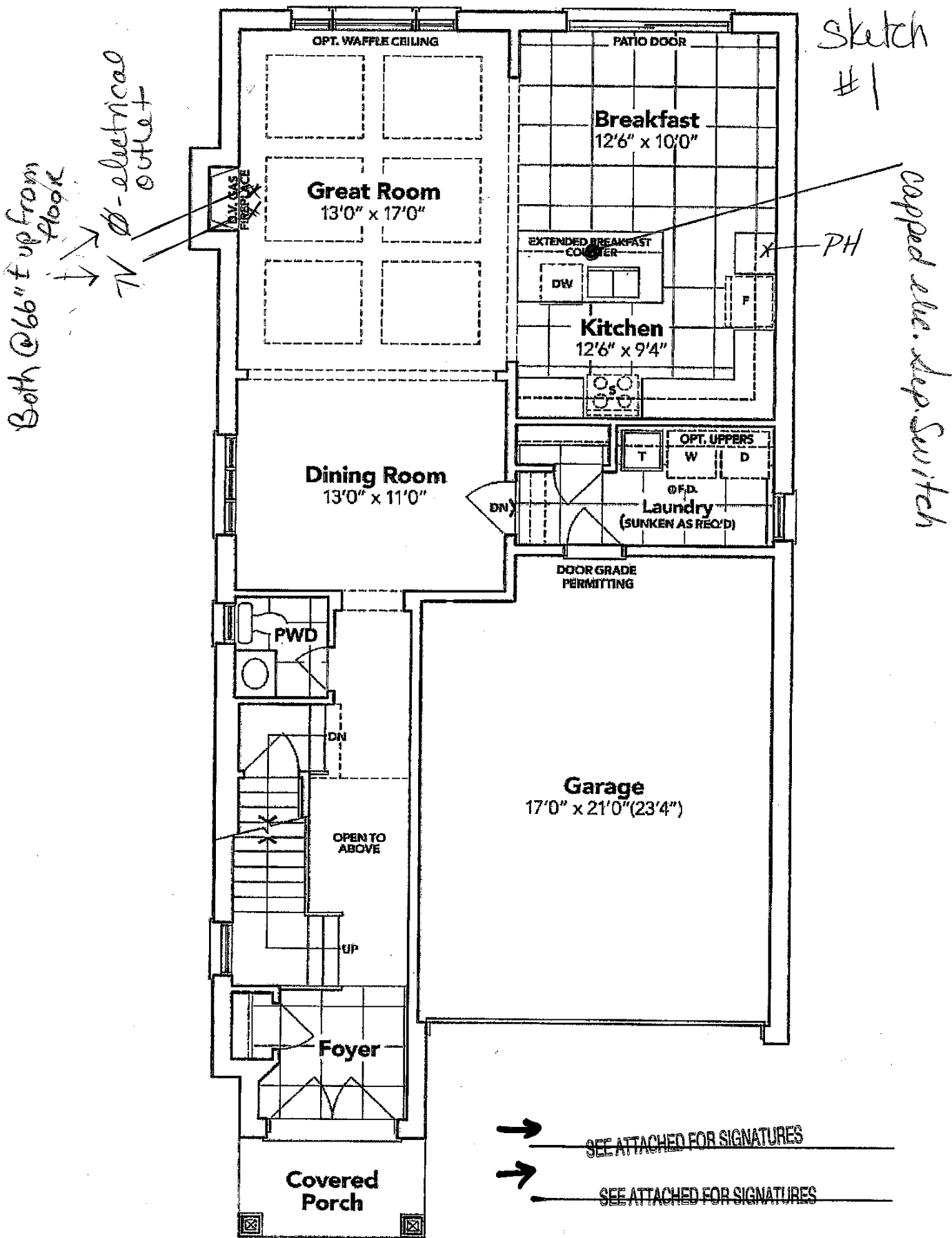
Lot/Unit: 35 Phase/Building: 4A Model/Floor Plan: Edward (3602) Elev A 4 Bed - 2+1 Bath

EXTRAS AS PER OFFER

VENDOR TO INSTALL CAPPED GAS LINE (ROUGH-IN ONLY) AT REAR OF HOME FOR FUTURE BBQ LOCATION. LOCATION TO BE FINALIZED AT VENDORS SOLE DISCRETION. <i>Worksheet</i> Note:	
VENDOR TO INSTALL GAS LINE (ROUGH-IN ONLY) TO KITCHEN IN AT STOVE LOCATION (AS PER PLAN) TO INCLUDE 110V CODE REQUIREMENT. <i>Worksheet</i> Note:	
VENDOR TO SUPPLY & INSTALL AIR CONDITIONING UNIT, SIZED ACCORDINGLY, FROM VENDORS STANDARD SAMPLES. <i>Worksheet</i> Note:	
VENDOR TO INCLUDE BUILDERS ATANDARD ENGINEERED FLOORING IN NATURAL STAIN THROUGHOUT THE SECOND LEVEL, IN LIEU OF INCLUDED CARPET, AS PER PLAN. THIS HAS NO CASH VALUE. <i>Worksheet</i> Note:	

SCHEDULE "B-1"
Floor Plan

Lot 35
Phase 4A
Model: Edward (3602) Elev A 4 Bed - 2+1 Bath
Standard

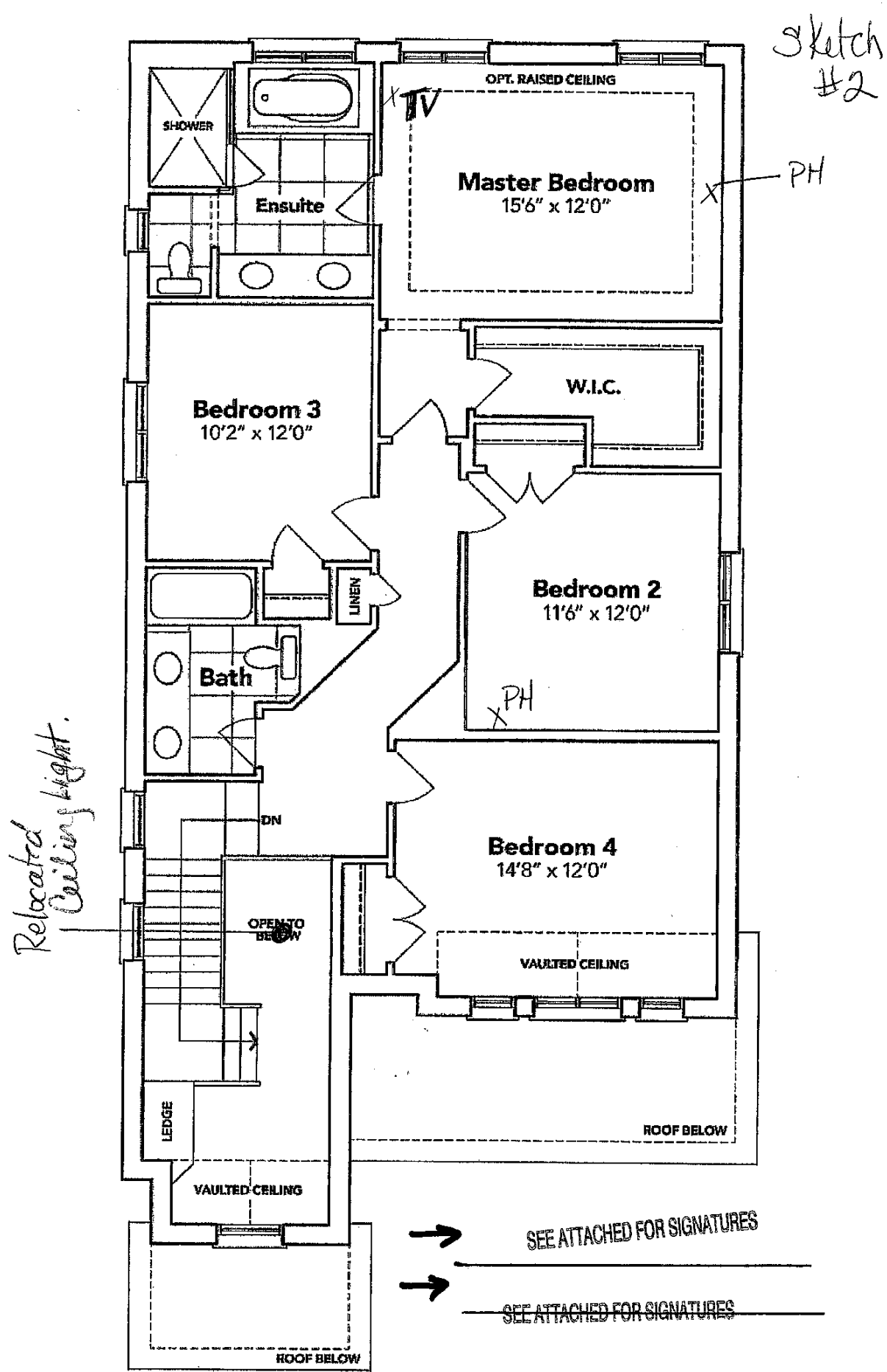


GROUND FLOOR EL. A

The floor plans and elevations shown are pre-construction plans and may be revised or improved as necessitated by architectural controls and the construction process. The measurements adhere to the rules and regulations of the TARION Warranty Corporation's official method for the calculation of floor area. Materials, specifications and floor plans are subject to change without notice. All house renderings are artist's concept only. Actual usable floor space may vary from the stated floor area. All options shown are upgrades. E. & O. E.

SCHEDULE "B-1"
Floor Plan

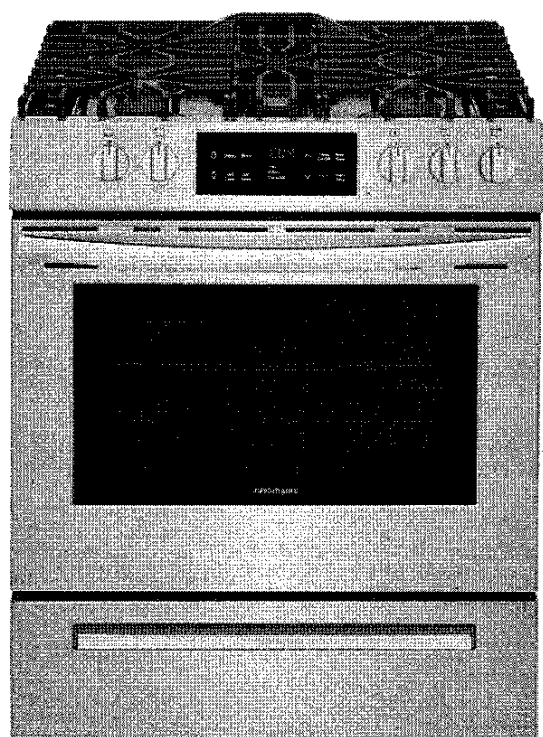
Lot 35
Phase 4A
Model: Edward (3602) Elev A 4 Bed - 2+1 Bath
Standard



SECOND FLOOR EL. A

The floor plans and elevations shown are pre-construction plans and may be revised or improved as necessitated by architectural controls and the construction process. The measurements adhere to the rules and regulations of the TARION Warranty Corporation's official method for the calculation of floor area. Materials, specifications and floor plans are subject to change without notice. All house renderings are artist's concept only. Actual usable floor space may vary from the stated floor area. All options shown are upgrades. B. & O. E.

Lot: 35 Havelock Corners PH: 4A
Re: Gas Stove Spec's



Frigidaire 30 Inch Front Control
Freestanding Gas Range FFGH3054US

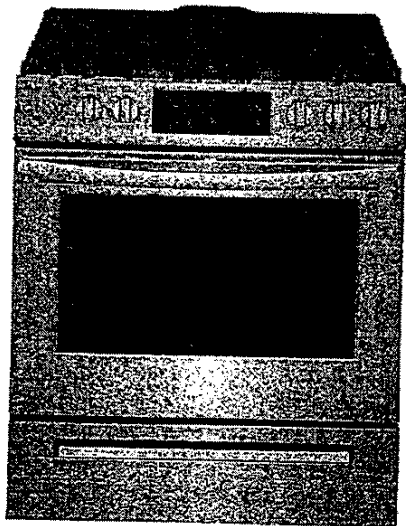
In stock
SKU
115330
(0)
Write a review

Upgrade your kitchen and get the look of a built-in range, with the fit of a traditional freestanding range.

→ SEE ATTACHED FOR SIGNATURES

→ SEE ATTACHED FOR SIGNATURES

Lot: 35 Havelock Corners PH: 4A
Re: Gas Stove SPEC's



**Frigidaire 30 Inch Front Control
Freestanding Gas Range FFGH3054US**

In stock
SKU
115330
(0)

Write a review

Upgrade your kitchen and get the look of a built-in range, with the fit of a traditional freestanding range.

→ Frank
→ Harriet Kaur

Specifications

Lot: 35 Havelock
Corners Pt: 4A
Re: Gas Stove
SPEC'S Con't

SEE ATTACHED FOR SIGNATURES

→
→ SEE ATTACHED FOR SIGNATURES

Product Type
Power Type
Size
Installation Type
Color

Adjustable Leveling Legs
Frigidaire Fit Promise

Manifold Panel

Height
Width
Depth

Drawer Functionality
Handle

Total Capacity

Control Panel Finish
Cooktop Finish
Door Finish
Drawer Finish
Exterior Finish
Handle Color

Amps @ 120 Volts
Minimum Circuit Required (Amps)
Power Supply Connection Location
Voltage Rating

Bake
Broil
Cancel
Lockout
Lower Drawer Controls
Main Oven
Self-Clean
Probe
Timed Bake
Timed Shut-off
Timer

Bake
Baking System
Broil
Broil System
Oven 1 Interior Depth
Oven 1 Interior Height
Oven 1 Interior Width
Oven 1 Rack Configuration
Oven 1 Rack Positions
Oven 1 Type
Oven 1 Window

30" Front Control Freest
Gas
30"
Free-Standing
Stainless Steel

Collapse group heading
General Specifications
4 Adjustable
Yes

Collapse group heading
Exterior Specifications
Color Coordinated

Collapse group heading
Dimensions: Exterior
36-5/8"
29-7/8"
26-6/8"

Collapse group heading
Drawer
Storage
Color Coordinated

Collapse group heading
Capacities
5.0

Collapse group heading
Exterior
Color Coordinated
Color Coordinated Porce
Stainless Steel
Stainless Steel
Stainless Steel
Stainless Steel

Collapse group heading
Electrical Specifications
5
5A
Rear Centerline Lower
120V 60Hz

Collapse group heading
Cooking Controls
Yes
Variable Broil
Yes
Yes
Storage
Self Clean
2 3 Hours
No
Yes
12 hours
Yes

Collapse group heading
Oven
18000 BTU
Even Baking Technology
13500 BTU
Vari-Broil™ High/Low
19-1/8"
18-5/8"
24-3/8"
2 Standard
6 positions
Main
Extra-Large Visualite®

Collapse group heading

Specifications

Lot: 35 Havelock
Corners Pt: 4A
Re: Gas Stove
Spec's Con't

→ Spice
→ Newark Local

Product Type	30" Front Control Freestanding
Power Type	Gas
Size	30"
Installation Type	Free Standing
Color	Stainless Steel
Adjustable Leveling Legs	Collapse group heading
Brigitdare Fit Promise	General Specifications
	4 Adjustable
	Yes
Manifold Panel	Collapse group heading
	Exterior Specifications
Height	Color Coordinated
Width	Collapse group heading
Depth	Dimensions: Exterior
	36-5/8"
	29-7/8"
	26-6/8"
Drawer Functionality	Collapse group heading
Handle	Drawer
	Storage
	Color Coordinated
Total Capacity	Collapse group heading
	Capacity
	5.0
Control Panel Finish	Collapse group heading
Cooktop Finish	Exterior
Door Finish	Color Coordinated
Drawer Finish	Color Coordinated
Exterior Finish	Stainless Steel
Handle Color	Stainless Steel
	Stainless Steel
	Stainless Steel
Amps @ 120 Volts	Collapse group heading
Minimum Circuit Required (Amps)	Electrical Specifications
Power Supply Connection Location	5
Voltage Rating	5A
	Rear Centerline Lower
	120V 60Hz
Bake	Collapse group heading
Broil	Cooking Controls
Cancel	Yes
Lockout	Variable Broil
Lower Drawer Controls	Yes
Main Oven	Yes
Self-Clean	Storage
Probe	Self Clean
Timed Bake	2-3 Hours
Timed Shut-off	No
Timer	Yes
	12 hours
	Yes
Bake	Collapse group heading
Baking System	Oven
Broil	18000 BTU
Broil System	Even Baking Technology
Oven 1 Interior Depth	13500 BTU
Oven 1 Interior Height	Vari-Broil™ High Low
Oven 1 Interior Width	18-1/8"
Oven 1 Rack Configuration	18-5/8"
Oven 1 Rack Positions	24-1/8"
Oven 1 Type	2 Standard
Oven 1 Window	6 positions
	Main
	Extra-Large Viewable
	Collapse group heading

Lot: 35 Havelock
Corners PH: 4A
Re: Gas Stove
SPEC'S CONT

→ SEE ATTACHED FOR SIGNATURES

→ SEE ATTACHED FOR SIGNATURES

Oven 1 Cleaning System
Oven 1 Interior Lighting

ADA Compliant
Agency Approval
Sabbath Mode

Center Rear
Cooking Surface
Grate Color
Grate Material
Grates
Knob Type
Left Front
Left Rear
Right Front
Right Rear

Control Location

Oven Specifications

Self-Clean
1 Incandescent

Collapse group heading
Certifications & Approvals

Yes
CSA Certified
No

Collapse group heading

Cooktop

Round 9500 BTU
Sealed Burners
Black Matte
Cast Iron
Edge-to-Edge Grates
Stainless Steel
12000 BTU
9500 BTU
17000 BTU
5000 BTU

Collapse group heading

Controls

Front Control

Lot: 35 Havelock

Cornors PH: 4A

R: Gas Stove

SPEC'S CONT

→ ~~Simple~~

→ Narrowest base

Oven 1 Cleaning System
Oven 1 Interior Lighting

ADA Compliant
Agency Approval
Sabbath Mode

Center Rear
Cooking Surface
Grate Color
Grate Material
Grates
Knob Type
Left Front
Left Rear
Right Front
Right Rear

Control Location

Oven Specifications

Self-Clean

1 Incandescent

Collapse group heading
Certifications & Approvals

Yes

CSA Certified

No

Collapse group heading

Cooktop

Round 9500 BTU

Sealed Burners

Black Matte

Cast Iron

Edge-to-Edge Grates

Stainless Steel

12000 BTU

9500 BTU

17000 BTU

5000 BTU

Collapse group heading

Controls

Front Control