



CONSTRUCTION SUMMARY

Kingsmen (Thames) Inc. / Havelock Corners (Kingsmen)

Lot/Unit: 34    Phase/Building: 4A    Model/Floor Plan: Andrew (3603) Elev B 4 Bed - 2+1 Bath

Miscellaneous

Inv.4575	1 - To supply & install the optional WAFFLE ceiling in the great room.... see sketch # 1	
Line 58313	Note: No moulding will be supplied or installed.	
24Mar20 / 30Mar20		

Cabinetry

Inv.4575	1 - Purchaser has upgraded to a 30" chimney hood fan, please see spec's attached.	
Line 58315	Note:	
24Mar20 / 30Mar20		

CABINETRY BASE CABINETS

Inv.4575	1 - To supply & intstall the BASE PIE CUT CORNER - STANDARD LINE in the kitchen...see sketch # 1	
Line 58332	Note:	
24Mar20 / 30Mar20		
Inv.4575	1 - To supply & install the POTS & PANS DRAWER - MINIMUM 60 CM - MAXIMUM 90 CM - SIZE SUBJECT TO FLOOR PLAN - STANDARD LINE in the kitchen.... see sketch # 1	
Line 58333	Note:	
24Mar20 / 30Mar20		

CABINETRY MICROWAVE OVEN STOVE COOKTOP

Inv.4575	1 - To supply & install a MICROWAVE CABINET WITH SHELF - OPENING 24 INCHES WIDE X 13 3/4 INCHES HIGH - PURCHASER MUST SUPPLY SPECS.. see sketch # 1	
Line 58328	Note: Electrical is sold sep.	
24Mar20 / 30Mar20		

CABINETRY WALL AND HUTCH

Inv.4575	1 - To supply & install the UPPER ANGLE CORNER - PRICE IS PER UNIT - STANDARD LINE in the kitchen.... see sketch # 1	
Line 58331	Note:	
24Mar20 / 30Mar20		

Countertop

Electrical

Inv.4575	1 - To supply & install a receptacle on a sep. circuit for the mircowave shelf.... see sketch # 1	
Line 58330	Note:	
24Mar20 / 30Mar20		
Inv.4575	1 - To supply & install the CYCLONE SCB72230 stainless steel chimney hood fan in lieu of the std. hood fan....see spec's	
Line 58314	Note:	
24Mar20 / 30Mar20		
Inv.4575	1 - To supply & install a receptacle at approx. 66" + - up from the floor centered + - to the F/P mantle in the great room.... see sketch # 1	
Line 58316	Note: This is for a wall mount T.V.	
24Mar20 / 30Mar20		

**Kingsmen (Thames) Inc. / Havelock Corners (Kingsmen)**

**Lot/Unit: 34    Phase/Building: 4A    Model/Floor Plan: Andrew (3603) Elev B 4 Bed - 2+1 Bath**

Inv. <b>4575</b>  <b>Line 58317</b>  24Mar20 / 30Mar20	<b>1</b> - To supply & install a conduit pipe at approx. 66 " + - up from the floor next to + - the upgraded elec. outlet, centered + - to the F/P mantle and terminated next to + - the std. T.V. rough in in the great room... see sketch # 1  Note:	
Inv. <b>4575</b>  <b>Line 58318</b>  24Mar20 / 30Mar20	<b>1</b> - To supply & install the standard T.V. rough in in the Great room and the master bedroom... see sketch # 1 & # 2  Note:	
Inv. <b>4575</b>  <b>Line 58319</b>  24Mar20 / 30Mar20	<b>1</b> - To supply & install the standard Phone rough in in the kitchen, master bedroom and bedroom # 3... see sketch # 1 & # 2  Note:	
Inv. <b>4575</b>  <b>Line 58320</b>  24Mar20 / 30Mar20	<b>1</b> - To supply & install an additional T.V. rough in the master bedroom.... see sketch # 2  Note:	
Inv. <b>4575</b>  <b>Line 58321</b>  24Mar20 / 30Mar20	<b>1</b> - Relocate the standard ceiling light in the kitchen over to the Breakfast bar area... see sketch # 1  Note:	
Inv. <b>4575</b>  <b>Line 58327</b>  24Mar20 / 30Mar20	<b>1</b> - Relocate the standard ceiling light form the upper stair landing to the O.T.B. area on the second floor.... see sketch # 1  Note:	
Inv. <b>4575</b>  <b>Line 58338</b>  24Mar20 / 30Mar20	<b>1</b> - To supply & install an additional exterior front light at Protico connected to the other standard exterior light, both on the same standard switch.... see sketch # 1  Note:	

**Hardwood**

**Heating And Air Conditioning**

Inv. <b>4575</b>  <b>Line 58312</b>  24Mar20 / 30Mar20	<b>1</b> - To supply & install a Humidifier to the furnace  Note:	
--	---	--



CONSTRUCTION SUMMARY

Kingsmen (Thames) Inc. / Havelock Corners (Kingsmen)

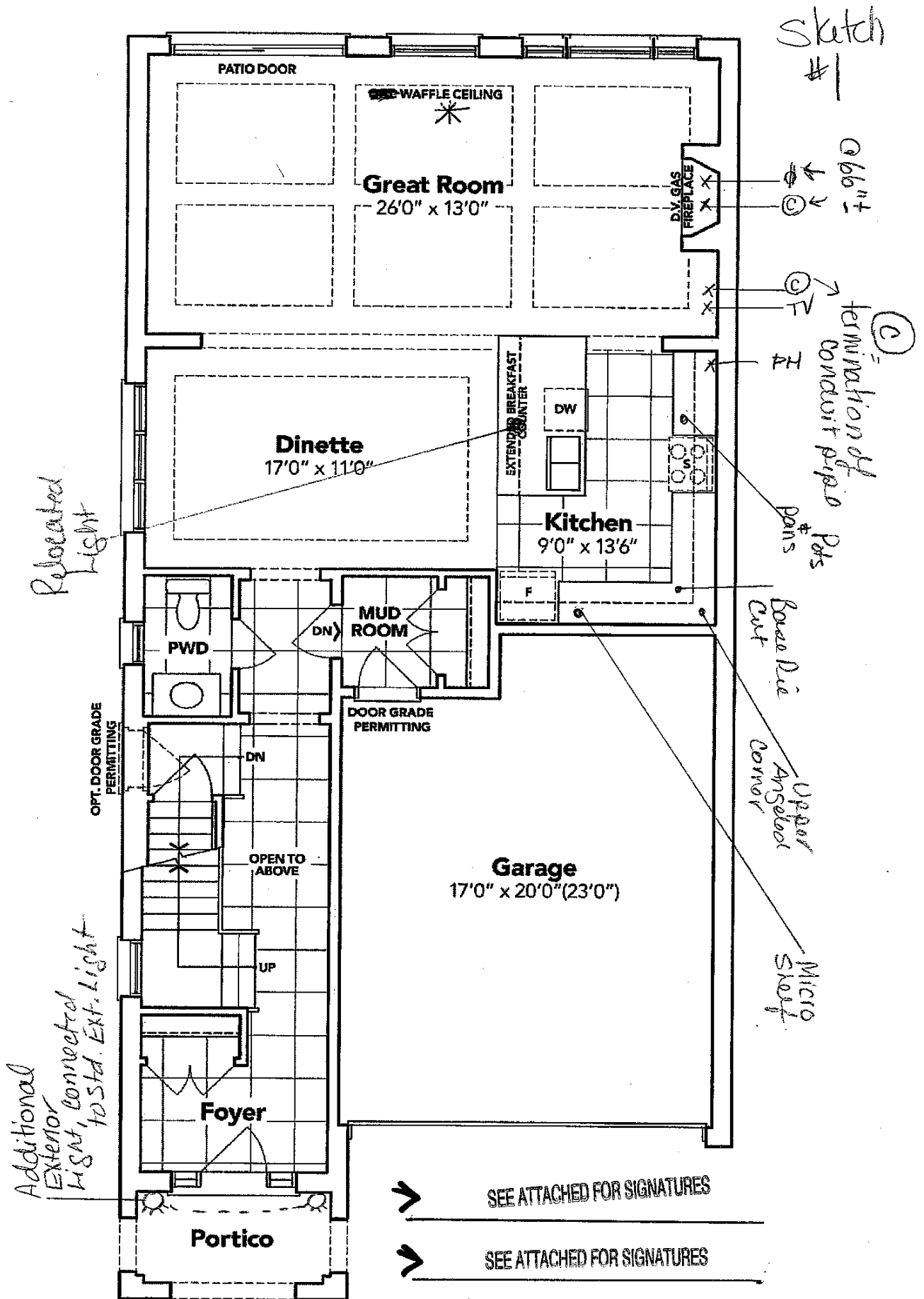
Lot/Unit: 34    Phase/Building: 4A    Model/Floor Plan: Andrew (3603) Elev B 4 Bed - 2+1 Bath

EXTRAS AS PER OFFER

VENDOR TO INSTALL CAPPED GAS LINE (ROUGH-IN ONLY) AT REAR OF HOME FOR FUTURE BBQ LOCATION. LOCATION TO BE FINALIZED AT VENDORS SOLE DISCRETION. <i>Worksheet</i> Note:	
VENDOR TO INSTALL GAS LINE (ROUGH-IN ONLY) TO KITCHEN IN AT STOVE LOCATION (AS PER PLAN) TO INCLUDE 110V CODE REQUIREMENT. <i>Worksheet</i> Note:	
VENDOR TO SUPPLY & INSTALL AIR CONDITIONING UNIT, SIZED ACCORDINGLY, FROM VENDORS STANDARD SAMPLES. <i>Worksheet</i> Note:	
VENDOR TO INCLUDE LEVEL 1, 20CM GRANITE OR QUARTZ IN THE KITCHEN, AS PER PLAN, IN LIEU OF THE INCLUDED LAMINATE COUNTER TOPS. SELECTIONS TO BE MADE FROM BUILDERS STANDARD SAMPLES. <i>Worksheet</i> Note:	
VENDOR TO INCLUDE ENGINEERED HARDWOOD FLOORING THROUGHOUT THE SECOND FLOOR IN LIEU OF INCLUDED CARPET, AS PER PLAN, AND SELECTIONS AS OUTLINED IN SCHEDULE A FOR INCLUDED ENGINEERED HARDWOOD ON THE MAIN FLOOR. THIS HAS NO CASH VALUE. <i>Worksheet</i> Note:	

**SCHEDULE "B-1"**  
**Floor Plan**

Lot 34  
Phase 4A  
Model: Andrew (3603) Elev B 4 Bed - 2+1 Bath  
Standard

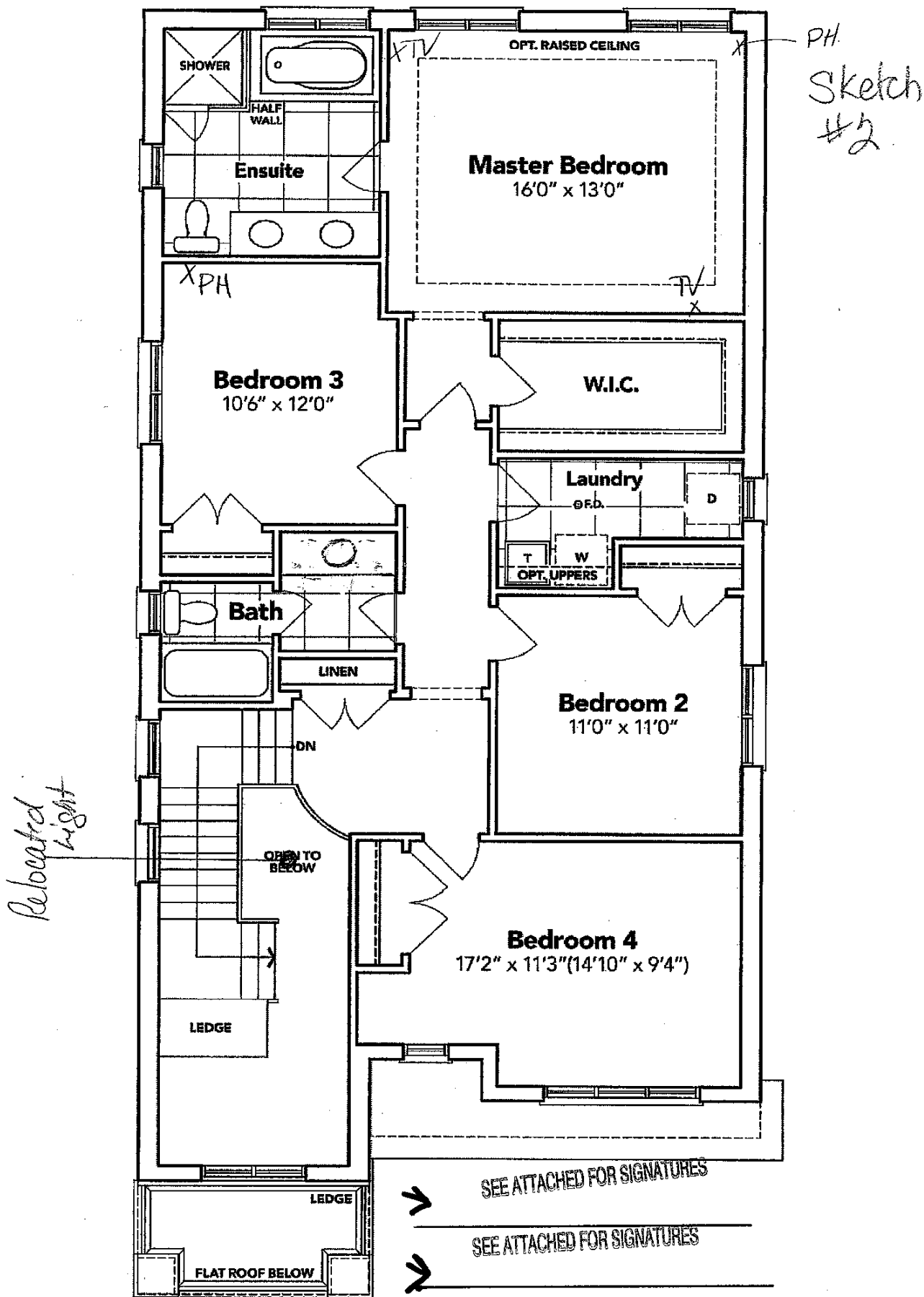


**GROUND FLOOR EL. B**

The floor plans and elevations shown are pre-construction plans and may be revised or improved as necessitated by architectural controls and the construction process. The measurements adhere to the rules and regulations of the TARION Warranty Corporation's official method for the calculation of floor area. Materials, specifications and floor plans are subject to change without notice. All house renderings are artist's concept only. Actual usable floor space may vary from the stated floor area. All options shown are upgrades. E. & O. E.

SCHEDULE "B-1"  
Floor Plan

Lot 34  
Phase 4A  
Model: Andrew (3603) Elev B 4 Bed - 2+1 Bath  
Standard



SECOND FLOOR EL. B

The floor plans and elevations shown are pre-construction plans and may be revised or improved as necessitated by architectural controls and the construction process. The measurements adhere to the rules and regulations of the TARION Warranty Corporation's official method for the calculation of floor area. Materials, specifications and floor plans are subject to change without notice. All house renderings are artist's concept only. Actual usable floor space may vary from the stated floor area. All options shown are upgrades. E. & O. E.

Lot: 34 Havelock Corners PH. 4A  
Re: Upgraded 30" Chimney  
Hood fan

## Specifications

Air Flow Volume: 650 CFM

Electrical Connection: 120V/60Hz

Power Consumption: 240 Watts

Current: 2.0 Amps

Fan Speed: 1599 RPM

Finishes: Stainless Steel

Duct: 6" Round

Knock-out: 6" Round - Top Only

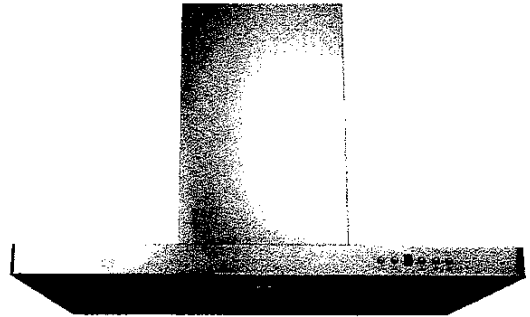
Dimensions: Width: 30"/36"

Height: 44 1/2"

Depth: 19 3/4"

Noise Level: Min. 2 Sones

Max. 7 Sones



SCB722 - Baffle Filter



## Ordering Model Chart

Model	Colour	Knock-out	Duct	Size	Filter	CFM
SCB72230	Stainless Steel	6"	6" Round	30"	Baffle	650
<del>SCB72236</del>	<del>Stainless Steel</del>	<del>6"</del>	<del>6" Round</del>	<del>36"</del>	<del>Baffle</del>	<del>650</del>

→ SEE ATTACHED FOR SIGNATURES

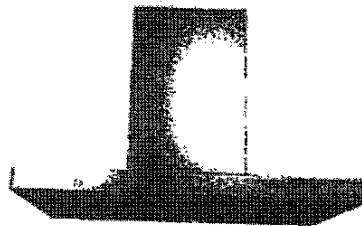
## Notes

→ SEE ATTACHED FOR SIGNATURES

**Cyclone**®  
Durable Ductless

Lot: 34 Haverlock Corners PH. 4A  
 Specifications Re: Upgraded 30" Chimney  
 Hood Fan

Air Flow Volume: 650 CFM  
 Electrical Connection: 120V/60Hz  
 Power Consumption: 240 Watts  
 Current: 2.0 Amps  
 Fan Speed: 1590 RPM  
 Finishes: Stainless Steel  
 Duct: 6" Round  
 Knock-out: 8" Round - Top Only  
 Dimensions: Width: 30"/36"  
 Height: 44 1/2"  
 Depth: 18 1/4"  
 Noise Level: Min. 2 Sones  
 Max. 7 Sones



SCB722 - Baffle Filter



### Ordering Model Chart

Model	Finish	Duct	Knock-out	Width	Height	Depth	CFM
SCB722	Stainless Steel	6"	8" Round	30"	44 1/2"	18 1/4"	650
SCB723	Stainless Steel	6"	8" Round	36"	44 1/2"	18 1/4"	650

### Notes

→ *[Handwritten signature]*  
 → *[Handwritten signature]*

---



---



---



---



---



---

**Cyclone**<sup>®</sup>  
 Commercial Kitchen