

Kingsmen (Thames) Inc. / Havelock Corners (Kingsmen)

Lot/Unit: 70    Phase/Building: 4A    Model/Floor Plan: Spencer (4204) Elev C 4 Bed - 4+1 Bath

.Base Cabinets

Inv.4581	1 - To supply & install the pots and pans drawers in the kitchen using the std. level of cabinetry .... see sketch # 1	
Line 58441	Note:	
30Mar20 / 6Apr20		

.Laminate Counter Tops and Accessories

Inv.4581	1 - Close off the wall between the kitchen and Dining room area. Extend the upper and lower base cabinets along with the Level 1, 2 cm granite or quartz, upper and lower cabinets and shift the standard fridge opening... see sketch # 1	
Line 58413	Note:	
30Mar20 / 6Apr20		

.Miscellaneous

CABINETRY

Inv.4581	1 - Purchaser has upgraded to a 30" chimney hood fan.	
Line 58617	Note:	
30Mar20 / 6Apr20		

Countertop

Electrical

Inv.4581	1 - To supply & install the standard T.V. rough in in the great room and master bedroom.... see sketch # 1 & #2	
Line 58419	Note:	
30Mar20 / 6Apr20		
Inv.4581	1 - To supply & install the standard phone rough in in the great room, master bedroom and media room.... see sketch #1 & #2	
Line 58420	Note:	
30Mar20 / 6Apr20		
Inv.4581	1 - To supply & install an additional T.V. rough in in the media room.... see sketch # 2	
Line 58421	Note:	
30Mar20 / 6Apr20		
Inv.4581	1 - Reinforce the standard ceiling light in the dining room.... see sketch # 1	
Line 58428	Note:	
30Mar20 / 6Apr20		
Inv.4581	1 - Relcoate the std. ceiling light from the upper stair landing to the O.T.B. area on the second floor.... see sketch # 2	
Line 58436	Note:	
30Mar20 / 6Apr20		
Inv.4581	1 - Reinforce the relocated light at the O.T.B. area on the second floor.... see sketch # 2	
Line 58437	Note:	
30Mar20 / 6Apr20		

Kingsmen (Thames) Inc. / Havelock Corners (Kingsmen)

Lot/Unit: 70    Phase/Building: 4A    Model/Floor Plan: Spencer (4204) Elev C 4 Bed - 4+1 Bath

Inv.4581	1 - Relocate the std. ceiling light in the master bedroom, add a second ceiling light both connected to the std. switch... see sketch # 2	
Line 58438	Note:	
30Mar20 / 6Apr20		
Inv.4581	1 - To supply & install a receptacle at approx. 66 " + - up from the floor centered + - to the F/P mantle.... see sketch # 1	
Line 58449	Note: This is for a future wall mount T.V.	
30Mar20 / 6Apr20		
Inv.4581	1 - To supply & install a conduit pipe at approx. 66" + - up from the floor next to + - the upgraded receptacle , centered + - to the F/P mantle and terminated next to + - the std. T.V. and Phone rough in the great room... see sketch # 1	
Line 58450	Note: This is for a future wall mount T.V.	
30Mar20 / 6Apr20		
Inv.4581	1 - To supply & install the CYCLONE 30" Chimney hood fan model: SCB72230 in stainless steel in the kitchen in lieu of the standard hood fan.... see spec's attached.	
Line 58616	Note:	
30Mar20 / 6Apr20		

Fireplace

Inv.4581	1 - To supply & install the EFS1 fireplace mantle in white in lieu of the standard mantle in the great room... see spec's attached	
Line 58447	Note:	
30Mar20 / 6Apr20		

Heating And Air Conditioning

MISCELLANEOUS

Plumbing

Inv.4581	1 - To supply & install the Mirolin BROOKE free standing tub in the master ensuite in lieu of the standard free standing tub..... see spec's	
Line 58418	Note:	
30Mar20 / 6Apr20		



CONSTRUCTION SUMMARY

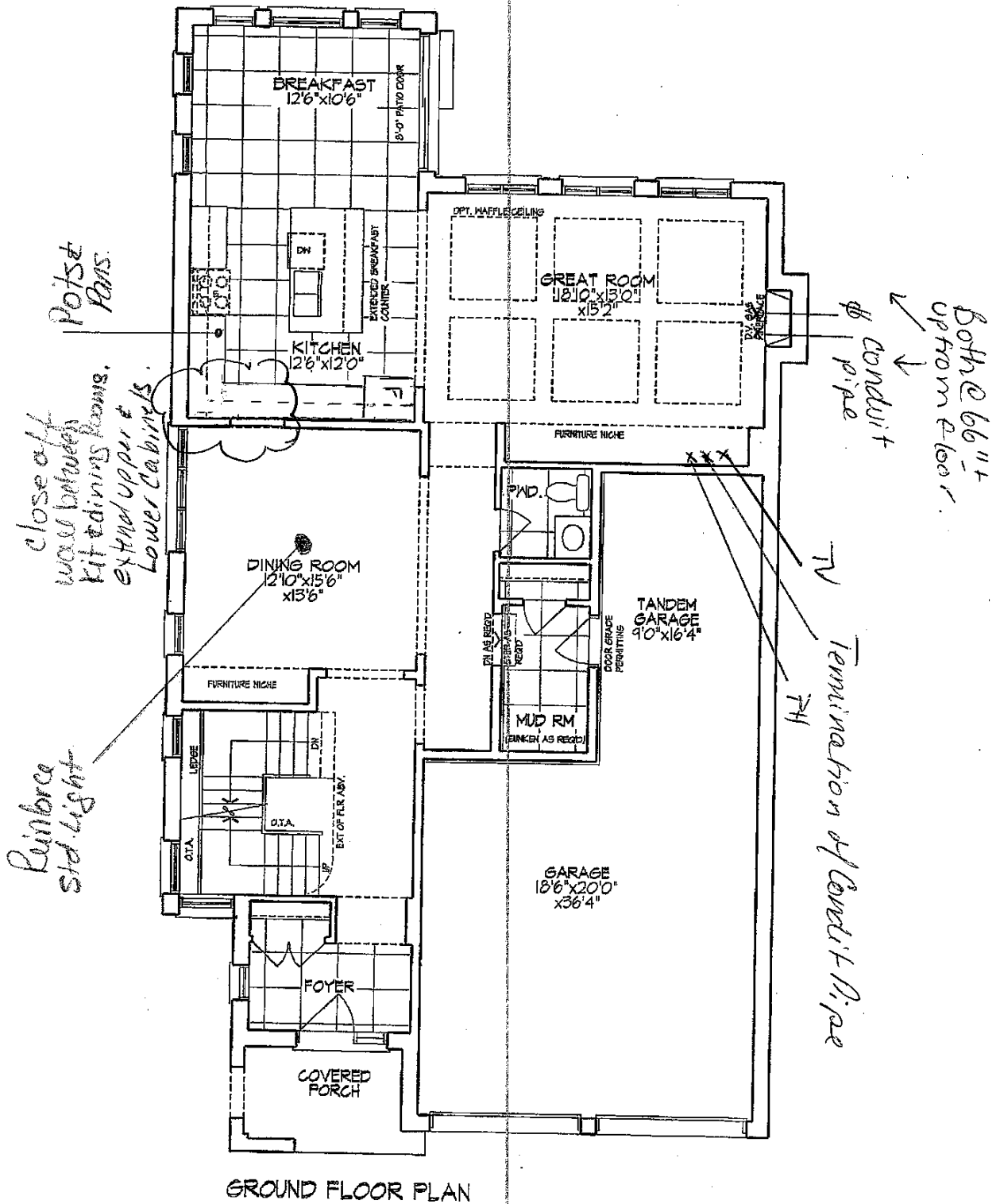
Kingsmen (Thames) Inc. / Havelock Corners (Kingsmen)

Lot/Unit: 70    Phase/Building: 4A    Model/Floor Plan: Spencer (4204) Elev C 4 Bed - 4+1 Bath

EXTRAS AS PER OFFER

VENDOR TO INSTALL CAPPED GAS LINE (ROUGH-IN ONLY) AT REAR OF HOME FOR FUTURE BBQ LOCATION. LOCATION TO BE FINALIZED AT VENDORS SOLE DISCRETION. <i>Worksheet</i> Note:	
VENDOR TO INSTALL GAS LINE (ROUGH-IN ONLY) TO KITCHEN IN AT STOVE LOCATION (AS PER PLAN) TO INCLUDE 110V CODE REQUIREMENT. <i>Worksheet</i> Note:	
VENDOR TO SUPPLY & INSTALL AIR CONDITIONING UNIT, SIZED ACCORDINGLY, FROM VENDORS STANDARD SAMPLES. <i>Worksheet</i> Note:	
VENDOR TO INCLUDE LEVEL 1, 2CM GRANITE OR QUARTZ IN ALL BATHROOMS, AS PER PLAN, IN LIEU OF THE INCLUDED LAMINATE COUNTER TOPS. SELECTIONS TO BE MADE FROM BUILDERS STANDARD SAMPLES. <i>Worksheet</i> Note:	
VENDOR TO INCLUDE WROUGHT IRON PICKETS THROUGHOUT IN LIEU OF INCLUDED WOOD PICKETS AS PER PLAN. THIS HAS NO CASH VALUE. TO BE SELECTED FROM BUILDERS STANDARDS. <i>Worksheet</i> Note:	

Sketch  
#1



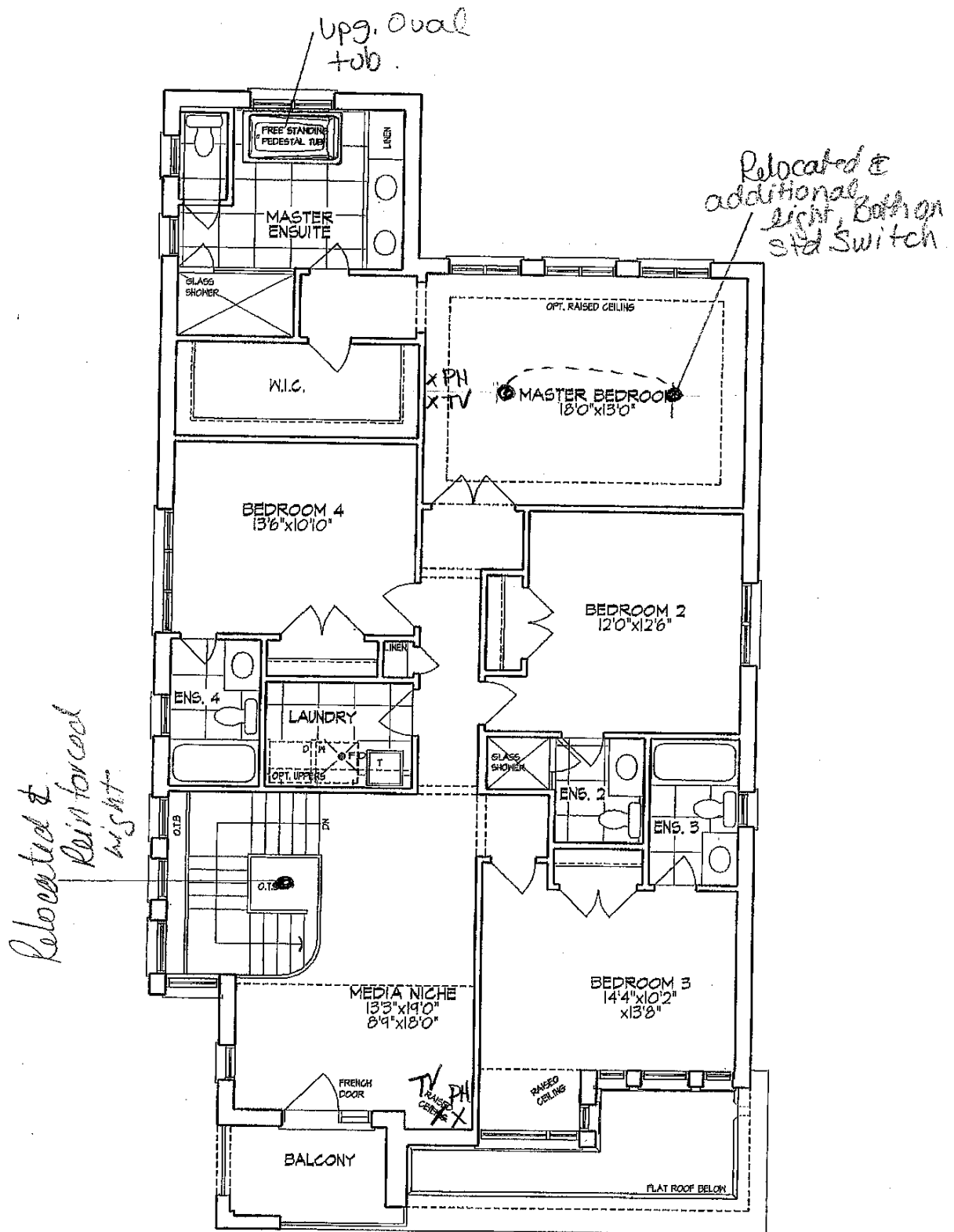
SEE ATTACHED FOR SIGNATURES

LOT 70 Phase 4A  
Unit 4204 - El. C3  
SPENCER - CORNER

Materials, specifications, and floor plans are subject to change without notice. All renderings are artist conceptions. All floor plans are approximate dimensions. Actual usable floor space may vary from the stated floor area. E.O.

S. A. A. A. R. I.

Sketch  
#2



SECOND FLOOR PLAN

SEE ATTACHED FOR SIGNATURES



Lot 70 Phase 4A  
Unit 4204 - El. C3  
SPENCER - CORNER

Materials, specifications, and floor plans are subject to change without notice. All renderings are artist conceptions. All floor plans are approximate dimensions. Actual usable floor space may vary from the stated floor area. E.A. E.A.

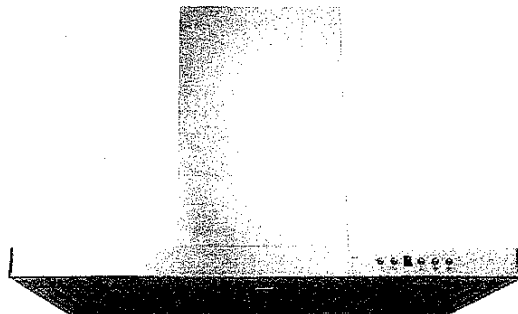
Schedule B1 2/5

Lot: 70 Havelock Corners Ph: 4A

Re: UPG. 30" Chimney Hood Fan.

## Specifications

Air Flow Volume: 650 CFM  
Electrical Connection: 120V/60Hz  
Power Consumption: 240 Watts  
Current: 2.0 Amps  
Fan Speed: 1599 RPM  
Finishes: Stainless Steel  
Duct: 6" Round  
Knock-out: 6" Round - Top Only  
Dimensions: Width: 30"/36"  
Height: 44 1/2"  
Depth: 19 3/4"  
Noise Level: Min. 2 Sones  
Max. 7 Sones



SCB722 - Baffle Filter



## Ordering Model Chart

Model	Colour	Knock-out	Duct	Size	Filter	CFM
SCB72230	Stainless Steel	6"	6" Round	30"	Baffle	650
<del>SCB72236</del>	<del>Stainless Steel</del>	<del>6"</del>	<del>6" Round</del>	<del>36"</del>	<del>Baffle</del>	<del>650</del>

## Notes



SEE ATTACHED FOR SIGNATURES

**Cyclone®**

Lot: 70 Havelock Corners Ph: 44

Re: DPG 30" Chimney Hood Fan.

Specifications

Air Flow Volume: 650 CFM  
Electrical Connection: 120V/60Hz  
Power Consumption: 240 Watts  
Current: 2.0 Amps  
Fan Speed: 1599 RPM  
Finishes: Stainless Steel  
Duct: 6" Round  
Knock-out: 6" Round - Top Only  
Dimensions: Width: 30"/36"  
Height: 44 1/2"  
Depth: 19 3/4"  
Noise Level: Min. 2 Sones  
Max. 7 Sones



SCB722 - Baffle Filter



Ordering Model Chart

Model	Colour	Knock-out	Duct	Size	Filter	CFM
SCB72230	Stainless Steel	6"	6" Round	30"	Baffle	650
<del>SCB72236</del>	<del>Stainless Steel</del>	<del>6"</del>	<del>6" Round</del>	<del>36"</del>	<del>Baffle</del>	<del>650</del>

Notes

→ *Freezer*

Cyclone®

Lot: 70 Havelock Corners Ph:4A  
Re: UPGRADED FREE standing tub for  
Master Eas.



Brooke™ | 1

## Brooke™

Categories: Acrylic Freestanding

### DESCRIPTION

68" Freestanding Bath  
SKU #: CF2002

### FEATURES

- Installation friendly two piece design
- Accepts deck mounted faucet
- Includes a chrome integral pop up drain and rectangular overflow
- ~~Brushed nickel drain and overflow~~
- Centre drain
- Includes levelling feet
- Available in White Only



### DIMENSIONS

68" x 36" x 23"

## OPTIONS & ACCESSORIES

### SOAKER

CF2002



SEE ATTACHED FOR SIGNATURES



Lot: 70 Havelock Corners Ph: 4A  
Re: UPGRADED FREE standing tub for  
Master ENS.



Brooke™ | 1

### Brooke™

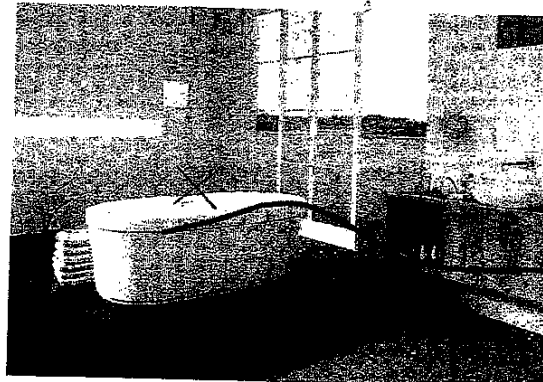
Categories: Acrylic Freestanding

#### DESCRIPTION

68" Freestanding Bath  
SKU #: CF2002

#### FEATURES

- Installation friendly two piece design
- Accepts deck mounted faucet
- Includes a chrome integral pop up drain and rectangular overflow
- ~~Roughed in set drain and overflow~~
- Centre drain
- Includes levelling feet
- Available in White Only



#### DIMENSIONS

68" x 36" x 23"

#### OPTIONS & ACCESSORIES

##### SOAKER

CF2002

→ 2 soakers

LOT: 70 Mawelock Corner Ph: 4A

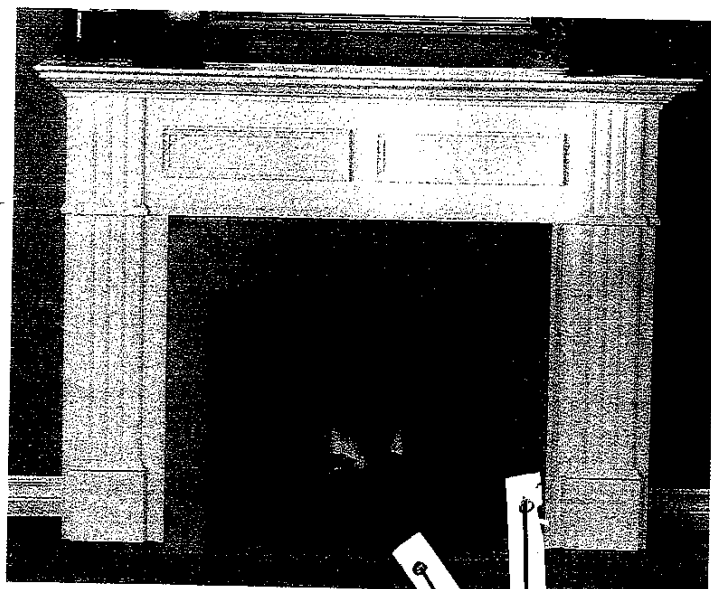
Re: UPG. MANTLE FOR F/P in Great Room.

# perci collection

flush wall mount mantels

EFS1 →  
✱

Timeless looks and features  
you'll never get tired of.



**NATIONAL**  
The fireplace experts.

SEE ATTACHED FOR SIGNATURES



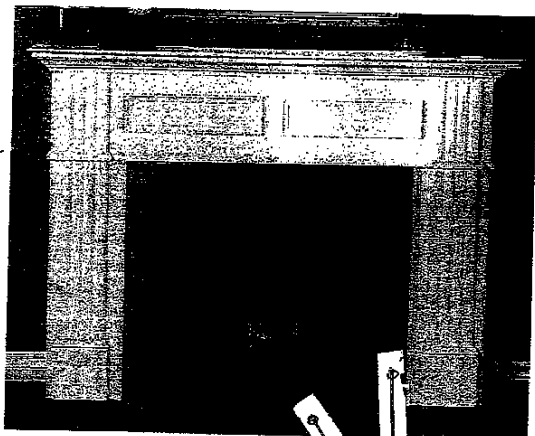
Marble Hearth  
& Surround  
is a Sep.  
Upgrade  
Not purchased

Lot: 70 Havelock Corner Ph: 414

Re: UPG. MANTLE FOR F/P in Great Room.

## perci collection

flush wall mount mantels



Timeless looks and features  
you'll never get tired of.

**NATIONAL**  
The fireplace experts.

→ Fireplace

Marble Hearth  
& Surround  
is a Sep.  
Upgrade  
Not purchased