

Kingsmen (Thames) Inc. / Havelock Corners (Kingsmen)

Lot/Unit: 48 Phase/Building: 4A Model/Floor Plan: Spencer (4204) Elev C 4 Bed - 4+1 Bath

.Base Cabinets

Inv.4583	1 - To supply & install the base pie cut corner cabinet in the kitchen using the standard level of cabinetry for this model type... see sketch # 1	
Line 58504	Note:	
31Mar20 / 6Apr20		

.Miscellaneous

Inv.4583	1 - Close off the wall between the kitchen and Dining room area. Extend the upper and lower base cabinets along with the Level 1, 2 cm granite or quartz, upper and lower cabinets, and relocate the standard fridge opening... see sketch # 1	
Line 58467	Note:	
31Mar20 / 6Apr20		

Cabinetry

Inv.4583	1 - Purchaser has upgraded to a 30" chimney hood fan	
Line 58471	Note:	
31Mar20 / 6Apr20		
Inv.4583	1 - To supply & install deep fridge uppers with gables using the standard level cabinetry ... see sketch # 1	
Line 58501	Note:	
31Mar20 / 6Apr20		
Inv.4583	1 - To supply & install the upper angled corner cabinet using the standard level cabinetry for this model type in the kitchen.... see sketch # 1	
Line 58503	Note:	
31Mar20 / 6Apr20		

Electrical

Inv.4583	1 - To supply & install the T.V. rough in in the great room and master bedroom... see sketch # 1 & # 2	
Line 58473	Note:	
31Mar20 / 6Apr20		
Inv.4583	1 - To supply & install the standard Phone rough in in the Great room, master bedroom and media room see sketch # 1 & # 2	
Line 58474	Note:	
31Mar20 / 6Apr20		
Inv.4583	1 - To supply & install a receptacle at approx. 66 " + - up from the floor centered + - to the F/P mantle in the great room...see sketch # 1	
Line 58475	Note: This is for a future wall mount TV	
31Mar20 / 6Apr20		
Inv.4583	1 - To supply & install a conduit pipe at approx. 66 " +- up from the floor next to + - the upgraded receptacle centered + -to the F/P mantle and terminated next to the standard T.V. rough in in the great room.... see sketch # 1	
Line 58476	Note: This is for a future wall mount T.V.	
31Mar20 / 6Apr20		



CONSTRUCTION SUMMARY

Kingsmen (Thames) Inc. / Havelock Corners (Kingsmen)

Lot/Unit: 48 Phase/Building: 4A Model/Floor Plan: Spencer (4204) Elev C 4 Bed - 4+1 Bath

Inv.4583	1 - To supply & install the 30" CYCLONE Chimney hood fan model SCB722 in stainless steel in the kitchen in lieu of the std. hood fan... see spec's.	
Line 58470	Note:	
31Mar20 / 6Apr20		

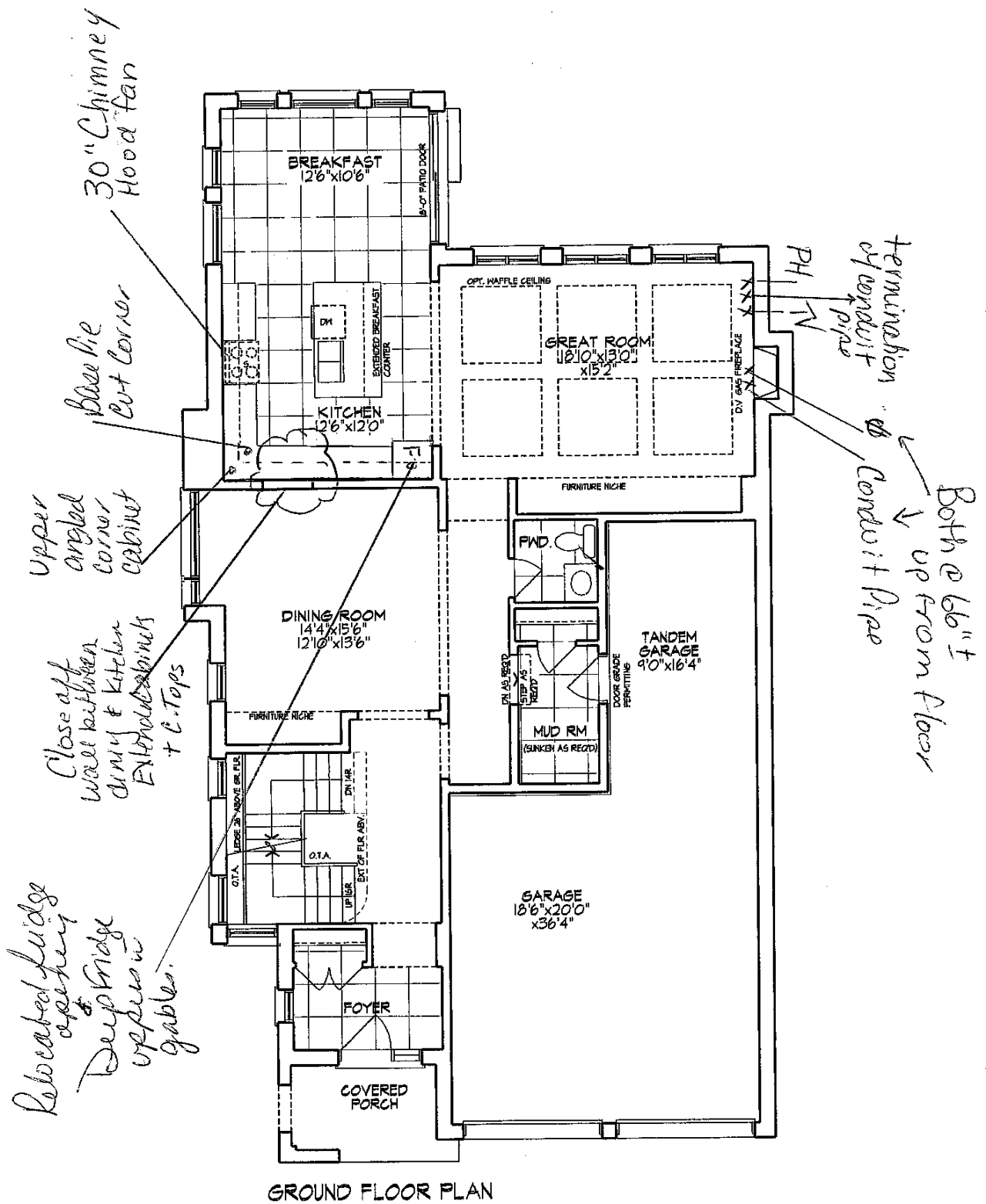
Heating And Air Conditioning

MISCELLANEOUS

EXTRAS AS PER OFFER

VENDOR TO INSTALL CAPPED GAS LINE (ROUGH-IN ONLY) AT REAR OF HOME FOR FUTURE BBQ LOCATION. LOCATION TO BE FINALIZED AT VENDORS SOLE DISCRETION. <i>Worksheet</i> Note:	
VENDOR TO SUPPLY & INSTALL AIR CONDITIONING UNIT, SIZED ACCORDINGLY, FROM VENDORS STANDARD SAMPLES. <i>Worksheet</i> Note:	

LOT: 48 Hawelock Corners PH: 4A
 Sketch #1

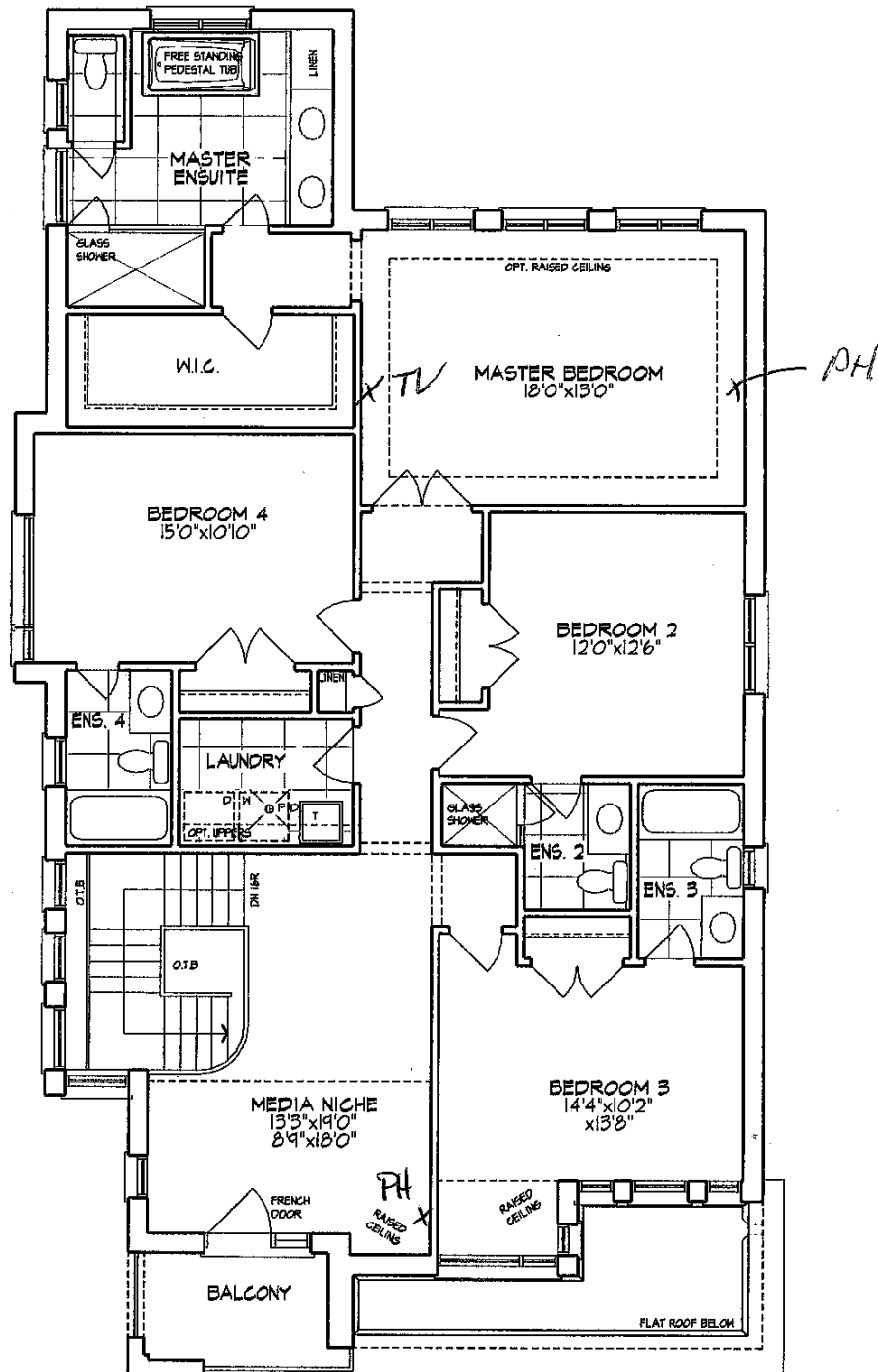


SEE ATTACHED FOR SIGNATURES

Unit 4204 - El. C2
 SPENCER - CORNER

Materials, specifications, and floor plans are subject to change without notice.
 All renderings are artist conceptions. All floor plans are approximate dimensions.
 Actual usable floor space may vary from the stated floor area. E. & E.O.

Lot: 48 Havelock Corners PH: 4A
Sketch #2



SECOND FLOOR PLAN



SEE ATTACHED FOR SIGNATURES

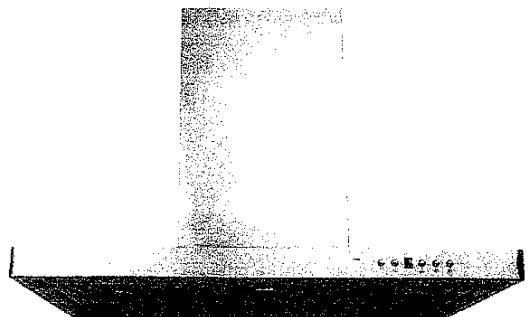
Unit 4204 - E1. C2
SPENCER - CORNER

Materials, specifications, and floor plans are subject to change without notice.
All renderings are artist conceptions. All floor plans are approximate dimensions.
Actual usable floor space may vary from the stated floor area. E. & E.O.

Lot: 48 Havelock Corners PH: 4A
Re: UPG. 30" Chimney Hood Fan

Specifications

Air Flow Volume: 650 CFM
Electrical Connection: 120V/60Hz
Power Consumption: 240 Watts
Current: 2.0 Amps
Fan Speed: 1599 RPM
Finishes: Stainless Steel
Duct: 6" Round
Knock-out: 6" Round - Top Only
Dimensions: Width: 30"/36"
Height: 44 1/2"
Depth: 19 3/4"
Noise Level: Min. 2 Sones
Max. 7 Sones



SCB722 - Baffle Filter



Ordering Model Chart

Model	Colour	Knock-out	Duct	Size	Filter	CFM
SCB72230	Stainless Steel	6"	6" Round	30"	Baffle	650
SCB72236	Stainless Steel	6"	6" Round	36"	Baffle	650

Notes



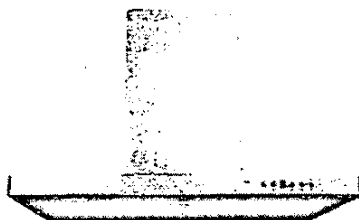
SEE ATTACHED FOR SIGNATURES

Cyclone[®]

Lot: 48 Howlock Covers Pkt: 4A
Re: URG. 30" Chimney Hood Fan

Specifications

Air Flow Volume: 650 CFM
Electrical Connection: 120V/60Hz
Power Consumption: 240 Watts
Current: 2.0 Amps
Fan Speed: 1599 RPM
Finishes: Stainless Steel
Duct: 6" Round
Knock-out: 6" Round - Top Only
Dimensions: Width: 30"/36"
Height: 44 1/2"
Depth: 19 3/4"
Noise Level: Min. 2 Sones
Max. 7 Sones



SCB722 - Baffle Filter



Ordering Model Chart

Model	Color	Knock-out	Duct	Size	Filter	CFM
SCB72230	Stainless Steel	6"	6" Round	30"	Baffle	650
SCB72236	Stainless Steel	6"	6" Round	36"	Baffle	650

Notes

→ Pagan deep Sindh.

Cyclone®