

**Kingsmen (Thames) Inc. / Havelock Corners (Kingsmen)**

**Lot/Unit: 72    Phase/Building: 4A    Model/Floor Plan: Spencer (4204) Elev C 4 Bed - 4+1 Bath**

**Cabinetry**

Inv.4564	1 - To accomodate the undermount 30" range hood in the kitchen....	
Line 58275	Note:	
17Mar20 / 31Mar20		

**CABINETRY HARDWARE**

Inv.4564	1 - To supply & install a BASE WASTE / RECYCLE CENTER PULL OUT DOOR - ONLY AVAILABLE IN 45 CM CABINET (2) 35L BINS - PRICE IS PER UNIT ... see sketch # 1	
Line 58291	Note:	
17Mar20 / 31Mar20		

**CABINETRY MICROWAVE OVEN STOVE COOKTOP**

Inv.4564	1 - MICROWAVE CABINET WITH SHELF - OPENING 24 INCHES WIDE X 13 3/4 INCHES HIGH - PURCHASER MUST SUPPLY SPECS	
Line 58292	Note:	
17Mar20 / 31Mar20		

**CABINETRY VANITY**

Inv.4564	1 - To supply & install a VANITY BANK OF DRAWERS - 55 CM MAXIMUM - UPGRADE 1 in the master bathroom.. see sketch # 2	
Line 58295	Note:	
17Mar20 / 31Mar20		

**Countertop**

Inv.4564	1 - To supply & install a shower niche in the master ensuite shower.... see sketch # 2	
Line 58296	Note: Colour will be selected at the time of the interior finishing appointment.	
17Mar20 / 31Mar20		

**Doors And Windows**

Inv.4564	1 - To supply & install the optional side door entrance to upper basement landing.... see sketch #1	
Line 58270	Note: Standard exterior light will be installed.	
17Mar20 / 31Mar20		

**Electrical**

Inv.4564	1 - To supply & install a Recpetacle on a sep. circuit at the microwave shelf	
Line 58293	Note: Shelf is sold sep.	
17Mar20 / 31Mar20		
Inv.4564	1 - To supply & install a receptacle at approx. 66 " +- up from the floor centered + - to the F/P mantle in the great room.... see sketch # 1	
Line 58279	Note: This is for a future wall mount t.v.	
17Mar20 / 31Mar20		
Inv.4564	1 - To supply & install a conduit pipe at approx. 66 " +- up from the floor centered + - to the F/P mantle next to + - the upgraded receptacle and terminated next to + - the standard T.V. rough in in the great room.... see sketch # 1	
Line 58280	Note:	
17Mar20 / 31Mar20		

**Kingsmen (Thames) Inc. / Havelock Corners (Kingsmen)**

**Lot/Unit: 72    Phase/Building: 4A    Model/Floor Plan: Spencer (4204) Elev C 4 Bed - 4+1 Bath**

Inv.4564	1 - To supply & install the standard T.V. rough in in the great room and master bedroom.... see sketch # 1 & # 2	
Line 58281	Note:	
17Mar20 / 31Mar20		
Inv.4564	1 - To supply & install the standard Phone rough in in the kitchen, master bedroom and Media niche area... see sketch # 1 & # 2	
Line 58282	Note:	
17Mar20 / 31Mar20		
Inv.4564	4 - To supply & install a T.V. rough in in Bedroom #2, #3, #4 and Media Niche area on the 2nd. floor... see sketch # 2	
Line 58283	Note:	
17Mar20 / 31Mar20		
Inv.4564	1 - Relocate the std. ceiling light in the kitchen over to the breakfast bar area... see sketch # 1	
Line 58284	Note:	
17Mar20 / 31Mar20		
Inv.4564	1 - Reinforce the relocated light at the O.T.B. area on the second floor.... see sketch # 2	
Line 58285	Note:	
17Mar20 / 31Mar20		
Inv.4564	1 - Reinforce the std. ceiling light in the dining room area... see sketch # 1	
Line 58286	Note:	
17Mar20 / 31Mar20		
Inv.4564	1 - Relocate the std. ceiling light from the upper stairn landing to the O.T.B. area on the second floor...see sketch # 2	
Line 58287	Note:	
17Mar20 / 31Mar20		
Inv.4564	5 - To supply & install FIVE LED pot lights in the kitchen area.... see sketch # 1	
Line 58461	Note: These five pot lights will be connected to a sep. switch, switch is sold sep.	
17Mar20 / 31Mar20		
Inv.4564	4 - To supply & install an additional FOUR LED pot lights in the kitchen.... see skech # 1	
Line 58462	Note: These additional four pot lights will be connected to a sep. switch, swith sold sep.	
17Mar20 / 31Mar20		
Inv.4564	2 - To supply & install TWO sep. switches in the kitchen. Have one switch connected to the upgraded FIVE pot lights in thre kitchen; and the other switch connected to the addition FOUR pot lights in the kitchen.	
Line 58463	Note:	
17Mar20 / 31Mar20		
Inv.4564	1 - To supply & install the CYCLONE 30" PTB86 undermount range hood fan in the kitchen... see spec's	
Line 58274	Note:	
17Mar20 / 31Mar20		

**Heating And Air Conditioning**

Inv.4564	1 - TO supply & install the Hummidifier to the furnace.	
Line 58271	Note:	
17Mar20 / 31Mar20		



CONSTRUCTION SUMMARY

Kingsmen (Thames) Inc. / Havelock Corners (Kingsmen)

Lot/Unit: 72    Phase/Building: 4A    Model/Floor Plan: Spencer (4204) Elev C 4 Bed - 4+1 Bath

Plumbing

Inv.4564	1 - To supply & install the Miolin BROOKE tub in white in lieu of the standard tub in the master ensuite.... see spec's	
Line 58277	Note:	
17Mar20 / 31Mar20		

EXTRAS AS PER OFFER

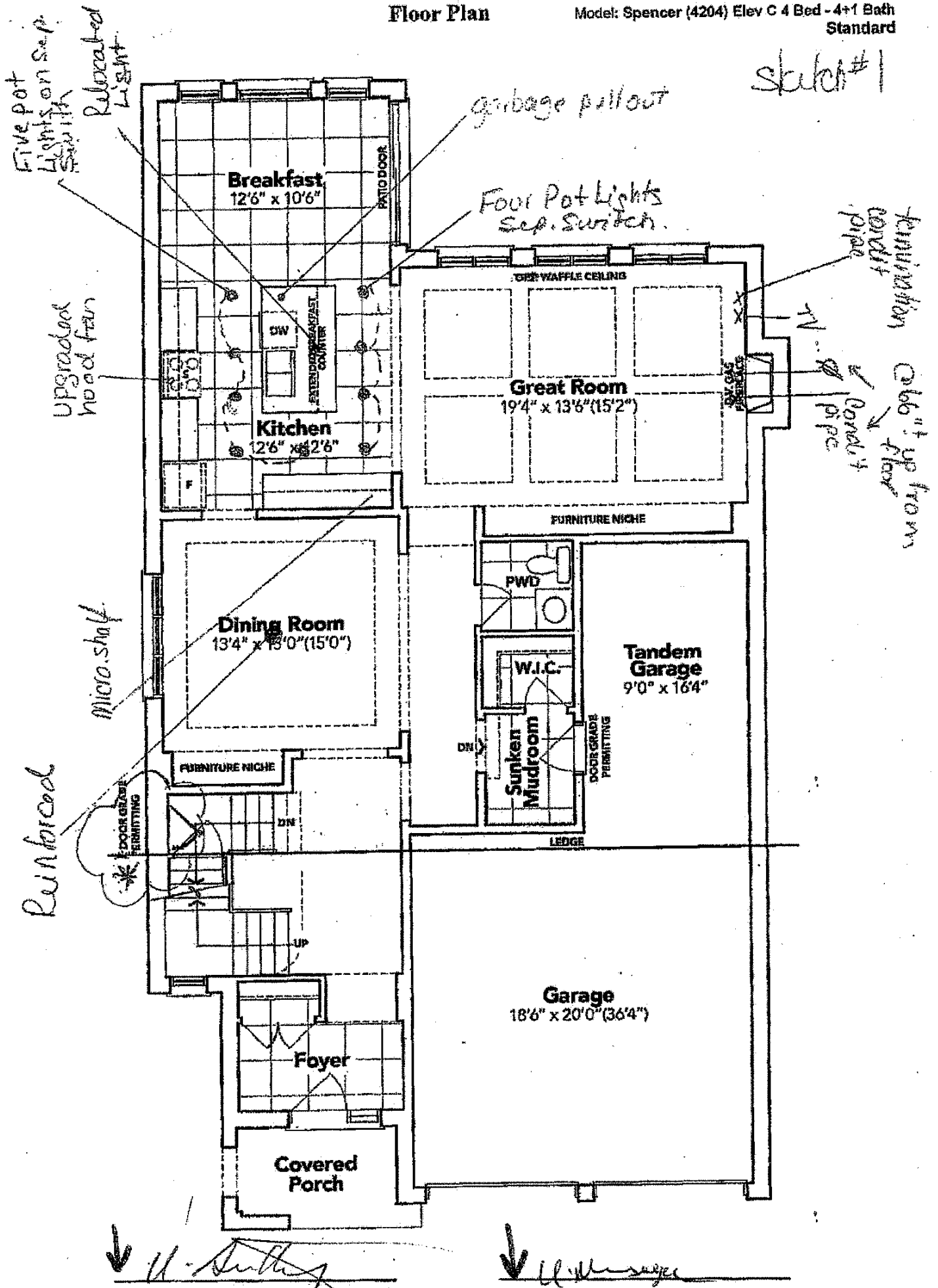
VENDOR TO INSTALL CAPPED GAS LINE (ROUGH-IN ONLY) AT REAR OF HOME FOR FUTURE BBQ LOCATION. LOCATION TO BE FINALIZED AT VENDORS SOLE DISCRETION. <i>Worksheet</i> Note:	
VENDOR TO SUPPLY & INSTALL AIR CONDITIONING UNIT, SIZED ACCORDINGLY, FROM VENDORS STANDARD SAMPLES. <i>Worksheet</i> Note:	

# SCHEDULE "B-1"

## Floor Plan

Lot 72  
Phase 4A  
Model: Spencer (4204) Elev C 4 Bed - 4+1 Bath  
Standard

Sketch #1



### PART, GROUND FLOOR EL. C

The floor plans and elevations shown are pre-construction plans and may be revised or improved as necessitated by architectural controls and the construction process. The measurements adhere to the rules and regulations of the TARION Warranty Corporation's official method for the calculation of floor area. Materials, specifications and floor plans are subject to change without notice. All house renderings are artist's concept only. Actual usable floor space may vary from the stated floor area. All options shown are upgrades. E. & O. E.

SCHEDULE "B-1" - Page 2 of 3

Initials:

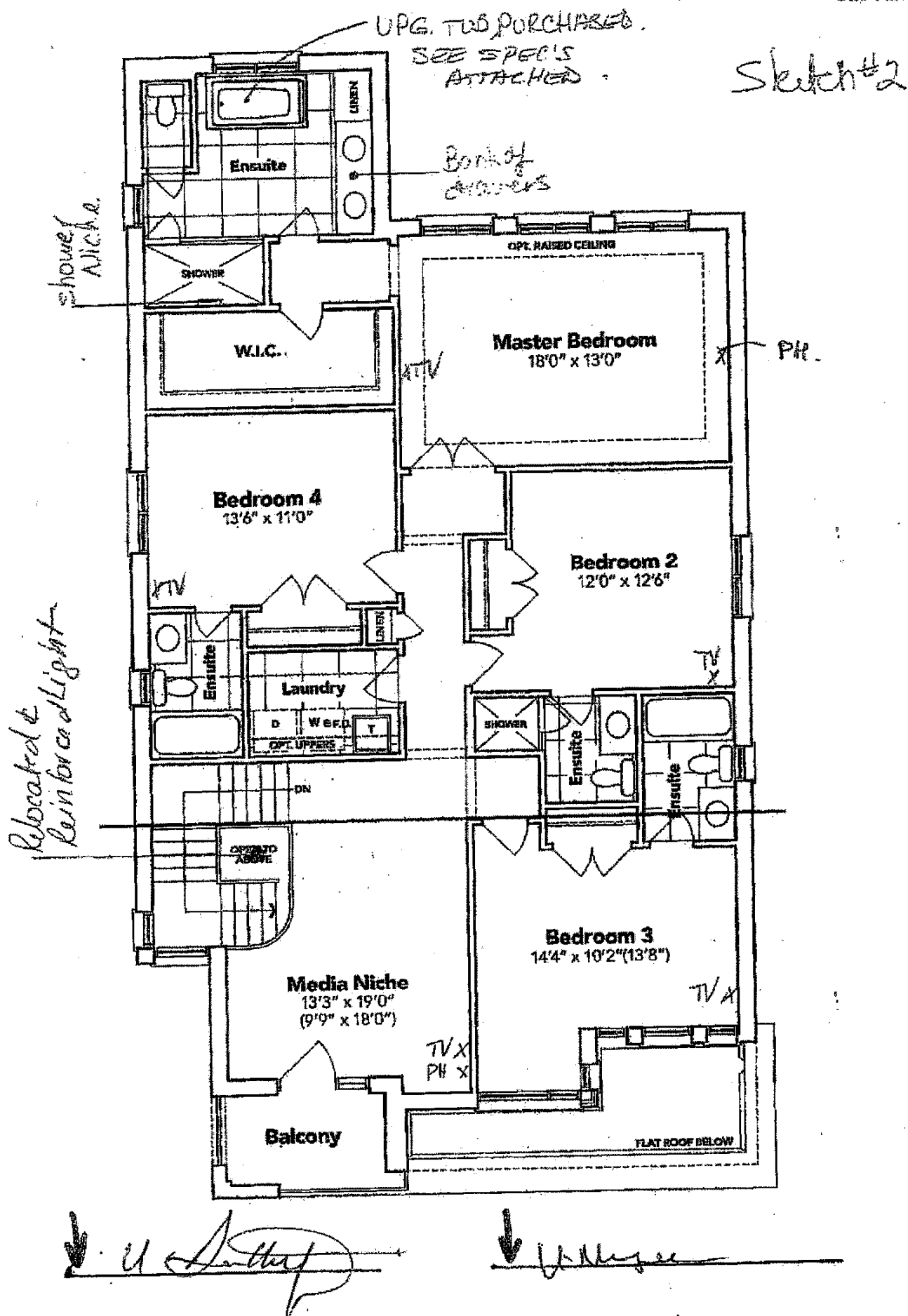
(Signature)

(Signature)

## Floor Plan

Model: Spencer (4204) Elev C 4 Bed - 4+1 Bath  
Standard

LOT 72  
Phase 4A  
- 4+1 Bath  
Standard



The floor plans and elevations shown are pre-construction plans and may be revised or improved as necessitated by architectural controls and the construction process. The measurements adhere to the rules and regulations of the TARIION Warranty Corporation's official method for the calculation of floor area. Materials, specifications and floor plans are subject to change without notice. All house renderings are artist's concept only. Actual usable floor space may vary from the stated floor area. All options shown are upgrades.  
B. & O. E.

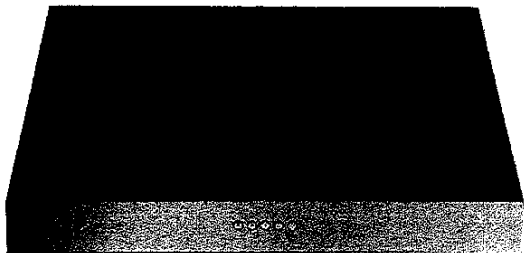
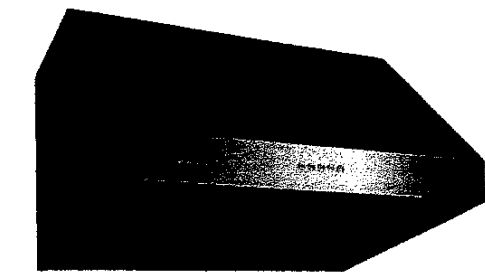
**SCHEDULE "B-1" - Page 3 of 3**

Initials:

LOT: 72 Howelock Corners Ph: 4A  
Re: VPG. 30" Hood Fan

Specifications

Air Flow Volume: 600 CFM  
Electrical Connection: 120V/60Hz  
Power Consumption: 210 Watts  
Current: 2.5 Amps  
Fan Speed: 1550 RPM  
Finishes: Stainless Steel  
Duct: 6" Round  
Knock-out: 6" Round (Top Only)  
Dimensions: Width: 30"/36"  
Height: 17 3/4"  
Depth: 21 1/4"  
Noise Level: Min. 2 Sones  
Max. 6 Sones



Ordering Model Chart

Model	Colour	Knock-out	Duct	Size	Filter	CFM
PTB8630	Stainless Steel	6"	6" Round	30"	Baffle	600
<del>PTB8630</del>	<del>Stainless Steel</del>	<del>6"</del>	<del>6" Round</del>	<del>30"</del>	<del>Baffle</del>	<del>600</del>

SEE ATTACHED FOR SIGNATURES

SEE ATTACHED FOR SIGNATURES

Notes

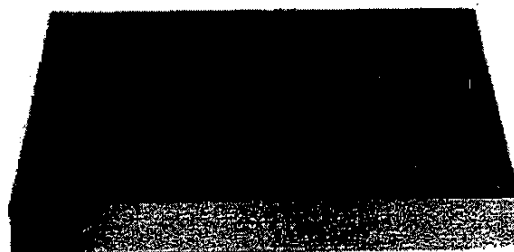
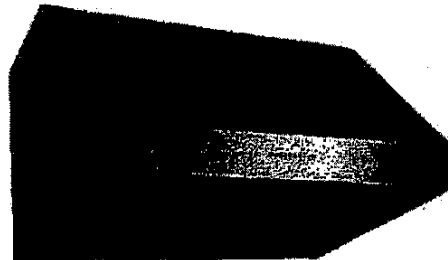


Cyclone®  
Breathe Better

LOT: 72 Hawelock Corners Ph: 4A  
Re: VPG 30" Hood Fan

## Specifications

Air Flow Volume: 600 CFM  
Electrical Connection: 120V/60Hz  
Power Consumption: 210 Watts  
Current: 2.5 Amps  
Fan Speed: 1550 RPM  
Finishes: Stainless Steel  
Duct: 6" Round  
Knock-out: 6" Round (Top Only)  
Dimensions: Width: 30"/36"  
Height: 17 3/4"  
Depth: 21 1/4"  
Noise Level: Min. 2 Sones  
Max. 6 Sones



## Ordering Model Chart

Model	Colour	Knock-out	Duct	Size	Filter	CFM
PTB8630	Stainless Steel	6"	6" Round	30"	Baffle	600
<del>PTB8636</del>	<del>Stainless Steel</del>	<del>6"</del>	<del>6" Round</del>	<del>36"</del>	<del>Baffle</del>	<del>600</del>

## Notes

↓ U. A. Antley

↓ U. W. N. G. A.

**Cyclone**<sup>®</sup>  
Breathe Better

LOT: 72 Havelock Corners PH: 4A  
Re: UPGRADED FREE STANDING TUB  
FOR MASTER ENS.



Brooke™ | 1

**Brooke™**

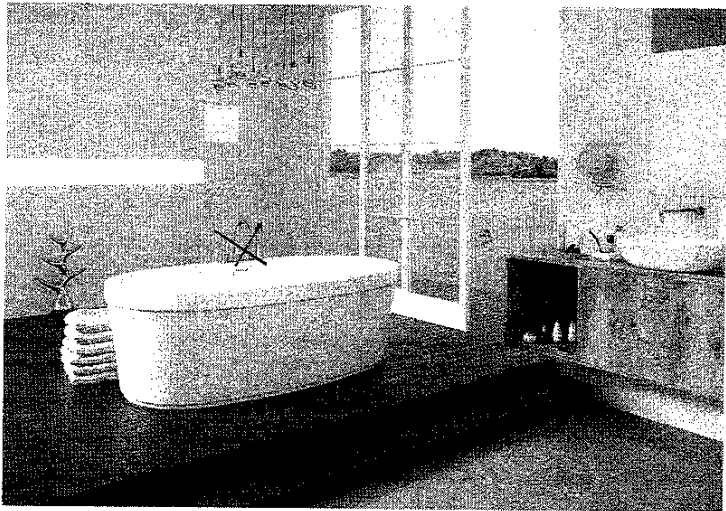
Categories: Acrylic Freestanding

**DESCRIPTION**

68" Freestanding Bath  
SKU #: CF2002

**FEATURES**

- Installation friendly two piece design
- Accepts deck mounted faucet
- Includes a chrome integral pop up drain and rectangular overflow
- ~~Brushed nickel drain and overflow covers available~~
- Centre drain
- Includes levelling feet
- Available in White Only



**DIMENSIONS**

68" x 36" x 23"

**OPTIONS & ACCESSORIES**

**SOAKER**

CF2002



SEE ATTACHED FOR SIGNATURES



SEE ATTACHED FOR SIGNATURES



LOT: 72 Howelock Corners PH: 4A  
RE. UPGRADED FREE STANDING TUB  
FOR MASTER ENS.



Brooke™ | 1

## Brooke™

Categories: Acrylic Freestanding

### DESCRIPTION

68" Freestanding Bath  
SKU #: CF2002

### FEATURES

- Installation friendly two piece design
- Accepts deck mounted faucet
- Includes a chrome Integral pop up drain and rectangular overflow
- ~~Includes a chrome Integral pop up drain and rectangular overflow covers available~~
- Centre drain
- Includes levelling feet
- Available in White Only



### DIMENSIONS

68" x 36" x 23"

### OPTIONS & ACCESSORIES

SOAKER

CF2002

↓ U. Smith ↓ U. Smith