

**KINGSMEN (THAMES) INC. / Havelock Corners (Kingsmen)**

**Lot/Unit: 46    Phase/Building: 4A    Model/Floor Plan: James (3601) Elev A 4 Bed - 2+1 Bath**

**.Miscellaneous**

Inv.4559	1 - To supply & install a shower niche in the master ensuite.... see sketch # 2	
	Colour of niche to be determined at the time of the colour appointment.	
Line 58088	Note:	
4Mar20 / 20Mar20		
Inv.4559	1 - Do not supply or install any towel bars, toilet paper holders or soap dishes throughtout all the bathrooms.	
Line 58089	Note:	
4Mar20 / 20Mar20		

**Cabinetry**

Inv.4559	1 - See fridge spec's attached.	
Line 58165	Note:	
4Mar20 / 20Mar20		

**CABINETRY ACCESSORIES**

Inv.4559	1 - To supply & install the LIGHT VALANCE - NOT APPLICABLE FOR THERMOVISION - for the kitchen.	
Line 58082	Note: rough in wires are sold seperately.	
4Mar20 / 20Mar20		

**CABINETRY VANITY**

Inv.4559	1 - To supply & install a VANITY BANK OF DRAWERS - 55 CM MAXIMUM - STANDARD LINE in the master ensuite.... see sketch # 2	
Line 58085	Note:	
4Mar20 / 20Mar20		

**ELECTRICAL**

Inv.4559	1 - To supply & install the ROUGH-IN VALENCE WITH SWITCH for future lights.	
Line 58083	Note: NO LIGHTS HAVE BEEN PURCHASED, LOWER VALANCE TRIM SOLD SEPERATELY.	
4Mar20 / 20Mar20		
Inv.4559	1 - To supply & install a receptacle at aproximately 66" + - up from the floor centered +- to the F/P mantle.... see sketch # 1	
Line 58067	Note:	
4Mar20 / 20Mar20		
Inv.4559	1 - To supply & install a conduit pipe at approx. 66" + - up from the floor centered + - to the F/P mantle and terminated in the niche area in the great room....see sketch # 1	
Line 58068	Note:	
4Mar20 / 20Mar20		
Inv.4559	1 - To supply & install the standard T.V. rough in in the Great room and master bedroom....see sketch #1 & # 2	
Line 58069	Note:	
4Mar20 / 20Mar20		

**KINGSMEN (THAMES) INC. / Havelock Corners (Kingsmen)**

**Lot/Unit: 46    Phase/Building: 4A    Model/Floor Plan: James (3601) Elev A 4 Bed - 2+1 Bath**

Inv.4559	1 - To supply & install the standard Phone rough in in the Great room, master bedroom and bedroom # 2...see sketch # 1 & # 2	
Line 58070	Note:	
4Mar20 / 20Mar20		
Inv.4559	1 - Relocate the standard ceiling light in the kitchen over to the breakfast bar area...see sketch # 1	
Line 58071	Note:	
4Mar20 / 20Mar20		
Inv.4559	1 - To supply & install one POT LIGHT FIRST FLOOR - LED in the kitchen area...see sketch # 1	
Line 58072	Note: This one pot light will be connected to a sep. switch, switch is sold seperately.	
4Mar20 / 20Mar20		
Inv.4559	1 - To supply & install a SWITCH - ADDITIONAL INTERIOR SINGLE POLE SWITCH connected to the ONE upgraded pot light in the kitchen area.	
Line 58073	Note:	
4Mar20 / 20Mar20		
Inv.4559	1 - Relocate the standard ceiling light from the upper stair landing to the O.T.B. area.... see sketch # 2	
Line 58076	Note:	
4Mar20 / 20Mar20		
Inv.4559	1 - Reinforce the relocated light to the O.T.B. area... see sketch # 2	
Line 58077	Note:	
4Mar20 / 20Mar20		

**Heating And Air Conditioning**

Inv.4559	1 - As per SCHEDULE " PE" Vendor to supply & install air conditioning unit, sized accordingly, from vendors standard samples.	
Line 58059	Note:	
4Mar20 / 20Mar20		
Inv.4559	1 - As per SCHEDULE " PE" Vendor to install capped gas line ( rough in only) at rear of home for futurre BBQ location. Location to be finalized at vednors sole discretion.	
Line 58060	Note:	
4Mar20 / 20Mar20		
Inv.4559	1 - To supply & install a gas rough in capped along with an electrical outlet for a future gas stove.... see spec's	
Line 58066	Note:	
4Mar20 / 20Mar20		

**Plumbing**

Inv.4559	1 - To supply & install the MOEN 16" overhead shower arm in chrome model # 151380 in lieu of the shower arm that is part of the 90 degree upgrade faucet for the master ensuite....see spec's	
Line 58087	Note:	
4Mar20 / 20Mar20		
Inv.4559	1 - T0 supply & install the WATERLINE ROUGH-IN TO THE FRIDGE LOCATION (NO HOOK UP) for the future fridge.	
Line 58063	Note:	
4Mar20 / 20Mar20		



CONSTRUCTION SUMMARY

KINGSMEN (THAMES) INC. / Havelock Corners (Kingsmen)

Lot/Unit: 46    Phase/Building: 4A    Model/Floor Plan: James (3601) Elev A 4 Bed - 2+1 Bath

Trim

Inv.4559	1 - To supply & install the MOEN 90 degree Posi Temp Tub/shower Faucet with 3 function transfer valve/trim and slide bar with hand shower model: TS2713EP/3372/128284/TS4172/62320/S3879EP/A721 in chrome for the master ensuite shower.... see spec's	
Line 58086	Note: Purchaser has upgraded the shower arm, see sep. upgrade	
4Mar20 / 20Mar20		

EXTRAS AS PER OFFER

VENDOR TO SUPPLY & INSTALL AIR CONDITIONING UNIT, SIZED ACCORDINGLY, FROM VENDORS STANDARD SAMPLES. <i>Worksheet</i> Note:	
VENDOR TO INSTALL CAPPED GAS LINE (ROUGH-IN ONLY) AT REAR OF HOME FOR FUTURE BBQ LOCATION.   LOCATION TO BE FINALIZED AT VENDORS SOLE DISCRETION. <i>Worksheet</i> Note:	

# SCHEDULE "B-1"

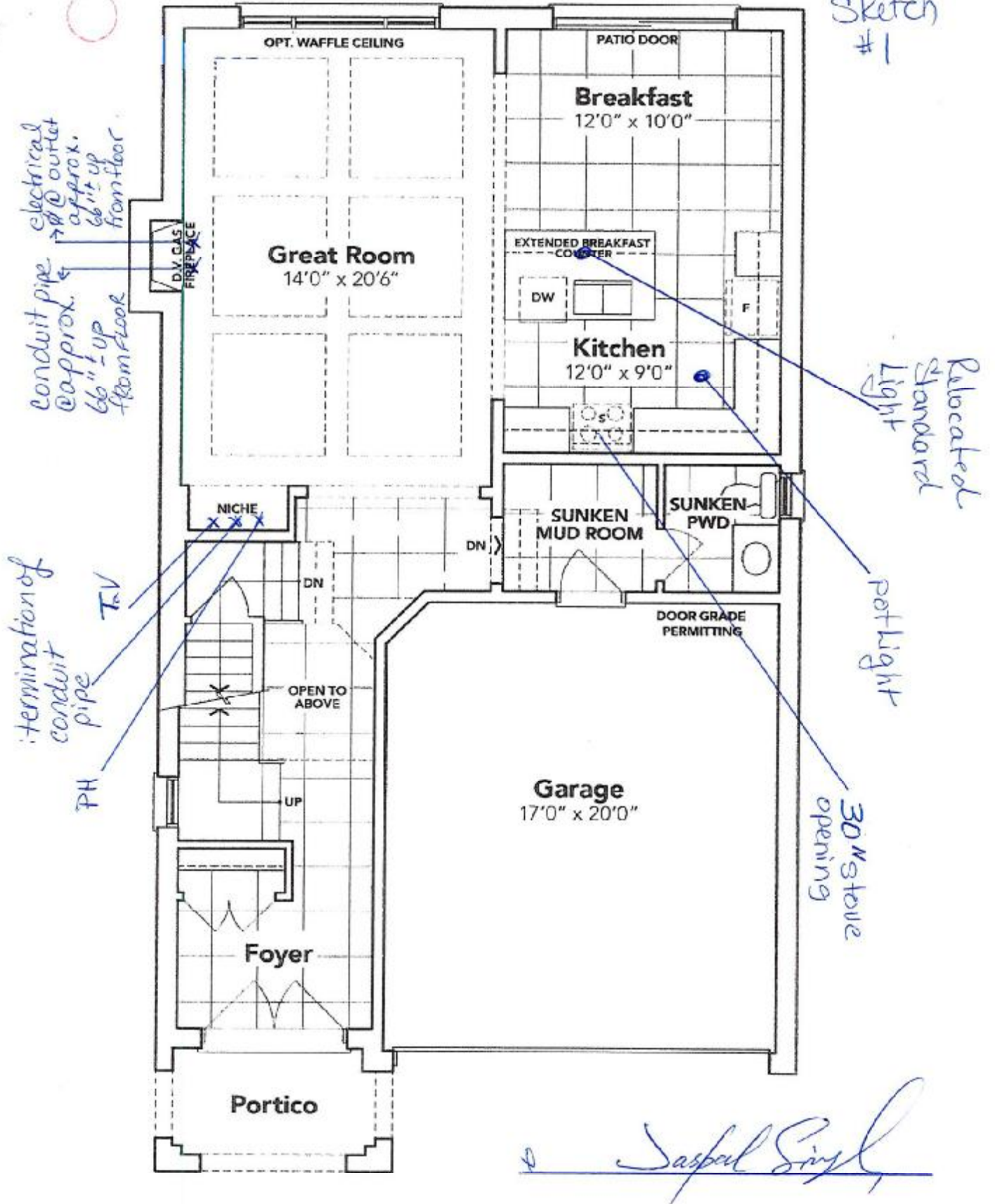
SEE ATTACHED FOR SIGNATURES

Floor Plan

Model: James (3601) Elev A 4 Bed - 2+1 Bath Standard

LOT 46  
Phase 4A

Sketch #1



## GROUND FLOOR EL. A

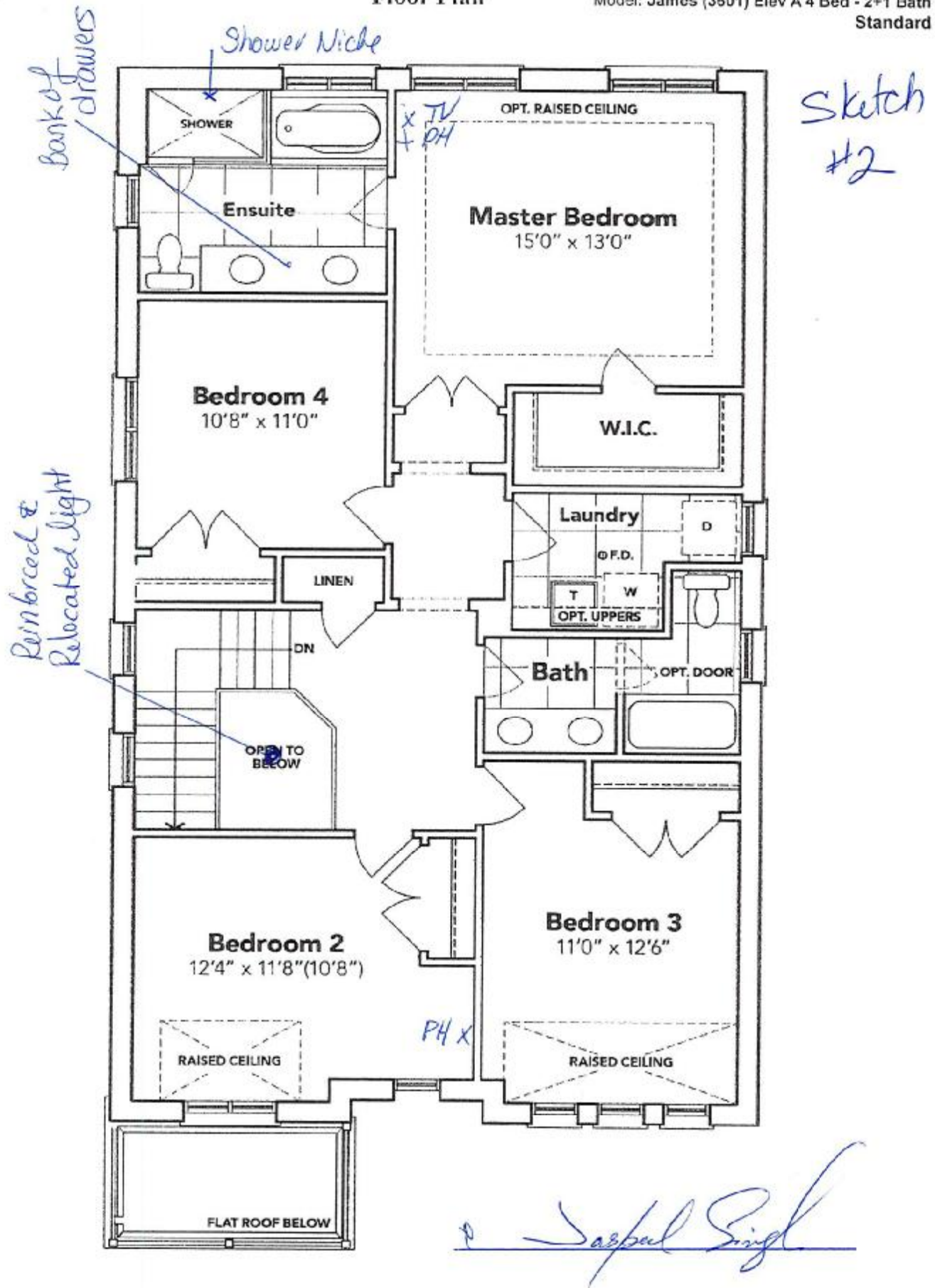
The floor plans and elevations shown are pre-construction plans and may be revised or improved as necessitated by architectural controls and the construction process. The measurements adhere to the rules and regulations of the TARION Warranty Corporation's official method for the calculation of floor area. Materials, specifications and floor plans are subject to change without notice. All house renderings are artist's concept only. Actual usable floor space may vary from the stated floor area. All options shown are upgrades. E. & O. E.

SCHEDULE "B-1" - Page 2 of 3

# SCHEDULE "B-1"

## Floor Plan

Lot 46  
Phase 4A  
Model: James (3601) Elev A 4 Bed - 2+1 Bath  
Standard



## SECOND FLOOR EL. A

The floor plans and elevations shown are pre-construction plans and may be revised or improved as necessitated by architectural controls and the construction process. The measurements adhere to the rules and regulations of the TARIION Warranty Corporation's official method for the calculation of floor area. Materials, specifications and floor plans are subject to change without notice. All house renderings are artist's concept only. Actual usable floor space may vary from the stated floor area. All options shown are upgrades. E. & O. E.

SCHEDULE "B-1" - Page 3 of 3

# FRIGIDAIRE

Lot: 46 Havelock Corners PH. 4A  
Re. Gas Stove Specs.

FFGH3054U S/W/B

4A -  
Lot 46



## AVAILABLE COLORS



Stainless



White



Black

## SIGNATURE FEATURES

### Upgrade Your Kitchen with a Built-in Look

Upgrade your kitchen and get the look of a built-in range, with the fit of a traditional freestanding range. The Frigidaire® front control freestanding range easily fits into a 30" cutout.

### Quick Boil

Get meals on the table faster with our 17,000 BTU burner — water boils faster than the traditional setting.

### Flexible Five Burner Cooktop

Get ultimate cooking flexibility with a powerful gas cooktop that has five elements designed to handle all of your cooking needs.

### Continuous Corner-to-Corner Grates

Continuous Grates make it easy to move heavy pots and pans across burners without lifting.

## FREESTANDING RANGE

30" GAS

## PRODUCT DIMENSIONS

Height (Max.)	36-5/8"
Width	29-7/8"
Depth (incl. Handle)	29-3/16"

## MORE EASY-TO-USE FEATURES

**Low Simmer Burner**  
Perfect for cooking delicate foods and sauces.

**One-Touch Self Clean**  
Your oven cleans itself — so you don't have to. Self-clean options available in 2- and 3-hour cycles.

**Store-More™ Storage Drawer**  
With the Store-More™ Storage Drawer, you will have extra space to store your cookware.

## CERTIFICATIONS

**A.D.A.- Compliant**  
When properly installed, this model is A.D.A.-qualified based on the United States Access Board's A.D.A./A.B.A. Accessibility Guidelines and the Department of Justice's 2010 A.D.A. Standards for Accessible Design.



BURNERS	BTU
Right Front	17,000
Right Rear	5,000
Left Front	2,000
Left Rear	9,500
Center Extra Zone	9,500



SEE ATTACHED FOR SIGNATURES

FFGH3054US  
FREESTANDING RANGE  
30" GAS

FRIGIDAIRE

FEATURES

Oven Control/Timing System	Ready Select® Controls
Surface Type	Black Porcelain
Sealed Gas Burners	Yes
Grates	Cast Iron with Black Matte Finish
Window	Extra-Large
Exterior Door Finish	Stainless
Handle Design	Stainless
Exterior Finish (Side Panels)	Black
Oven Cleaning System	Self-Clean
Drawer Functionality	Storage

OVEN CONTROLS

Bake	Yes
Broil	Yes
Delay Start	Yes
Delay Bake	Yes
Self-Clean	2 & 3 Hour
Delay Clean	Yes
Kitchen Timer	Yes
Timed Cook Option	Yes
Auto Oven Shut-Off	12 Hours
Oven Lock-Out	Yes

COOKTOP FEATURES

Right Front Burner (BTU)	17,000
Right Rear Burner (BTU)	5,000
Left Front Burner (BTU)	12,000
Left Rear Burner (BTU)	5,500
Center Extra Zone Burner (BTU)	5,500

OVEN FEATURES

Capacity (Cu.Ft.)	5.0
Oven Light	1 Incandescent 40W
Rack Configuration	2 Standard
Baking System	Even Baking Technology
Broiling System	Vari-Broil™ (Hi/Low)
Bake Burner/Broil Burner (BTU)	18,000/13,500

OPTIONAL ACCESSORIES

LP Gas Conversion Kit	Part # GR_P4
-----------------------	--------------

CERTIFICATIONS

ADA Compliant	Yes
---------------	-----

SPECIFICATIONS

Oven Interior (H x W x D)	18-5/8" x 24-3/8" x 19-1/8"
Power Cord Connection Location	Middle Bottom Rear
Gas Supply Connection Location	Right Bottom Rear
Voltage Rating	120V/60 Hz/5A
Amps @ 120 Volts	5.0
Shipping Weight (Approx.)	190 Lbs.

\*When properly installed, this model is ADA-compliant based on the United States Access Board's ADA/ABA Accessibility Guidelines and the Department of Justice's 2010 ADA Standards for Accessible Design.

PRODUCT DIMENSIONS

A-Height (Max.)	36-5/8"
B-Width	29-7/8"
C-Depth (incl. Handle)	20-3/16"
Depth with Door Open 90°	47"

CABINET CUTOUT DIMENSIONS

Height (Standard)	36"
Width (Min.)	30"
Depth (Min.)	24"

4A -  
Lot 46  
Lot: 46 Havelock Corners Ph. 4A.  
Re: Gas Stove Specs Cont

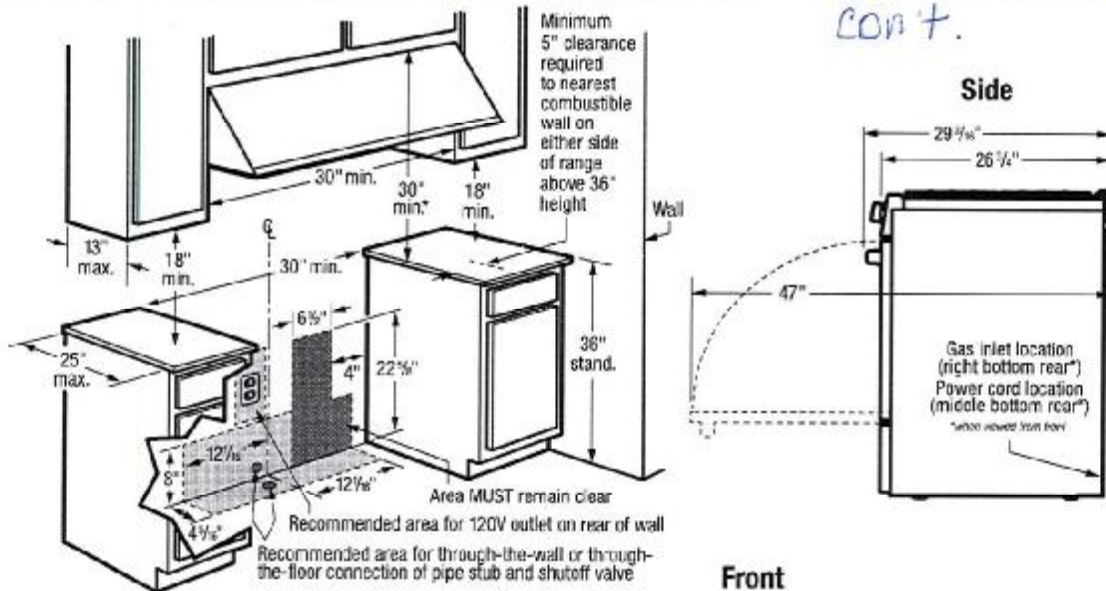


 SEE ATTACHED FOR SIGNATURES

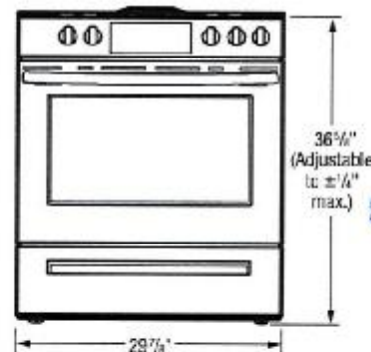


Note: For planning purposes only. Always consult local and national electric, gas and plumbing codes. Refer to Product Installation Guide for detailed installation instructions on the web at [frigidaire.com](http://frigidaire.com) / [frigidaire.ca](http://frigidaire.ca). Specifications subject to change. Accessories information available on the web at [frigidaire.com](http://frigidaire.com) / [frigidaire.ca](http://frigidaire.ca).

Lot: 46 Howelock Corners Ph. 4A Re: Gas Stove Specs 4A-  
 con't. Lot 46



**\*Note:** 30" minimum clearance between top of cooking surface and bottom of unprotected wood or metal overhead cabinet; or 24" minimum clearance when bottom of wood or metal overhead cabinet is protected by not less than 1/4" flame-retardant millboard covered with not less than No. 28 MSG sheet steel, 0.015" stainless steel, 0.024" aluminum or 0.020" copper. 0" clearance is minimum for rear of range. Follow all dimension requirements provided above to prevent property damage, potential fire hazard, and incorrect countertop and cabinet cuts.



SEE ATTACHED FOR SIGNATURES

## INSTALLATION SPECIFICATIONS

- Product Shipping Weight (approx.) - 190 Lbs.
- Voltage Rating - 120V/60 Hz/5 Amps
- Amps @ 120 volts = 5.0 Amps
- Always consult local and national electric and gas codes.
- Make sure wall coverings around range can withstand heat generated by range.
- Linoleum or any other synthetic floor covering located beneath range, must be capable of withstanding minimum heat of 90° F above room temperature without shrinking, warping or discoloring. Insulating pad or 1/4"-thick plywood required between range and a carpeted floor.
- Do not obstruct flow of combustion air at oven vent nor around base or beneath lower front panel of range. Range requires fresh air for proper burner combustion.
- Do not install range beneath any downward-blowing, overhead vent hood or air curtain.
- Range ships with 3/4" factory regulator.
- Range is LP Gas convertible. (Optional LP Gas Conversion Kit available.)
- Floor beneath range MUST be solid and level.
- Overhead cabinetry should not exceed a 13" maximum depth.

- Absolute minimum horizontal distance between overhead cabinets installed to either side of appliance must be no less than maximum width of appliance.
- Range can be installed flush to wall with 0" minimum rear clearance.
- Minimum clearance required (from edge of range to nearest combustible wall on either side of range above 36" height) is based on largest burner output rating on cooking surface.
- Allow 30" minimum clearance between top of cooking surface and bottom of unprotected wood or metal overhead cabinet; or 24" minimum clearance when bottom of wood or metal overhead cabinet is protected by not less than 1/4" flame-retardant millboard covered with not less than No. 28 MSG sheet steel, 0.015" stainless steel, 0.024" aluminum or 0.020" copper.
- To reduce risk of fire when using overhead cabinetry, install range hood that projects horizontally a recommended minimum of 5" beyond bottom of cabinets.
- Follow all dimension requirements provided to prevent property damage, potential fire hazard, and incorrect countertop and cabinet cuts.

### OPTIONAL ACCESSORIES

- LP Gas Conversion Kit - (PN# GRLP4).



**FRIGIDAIRE**

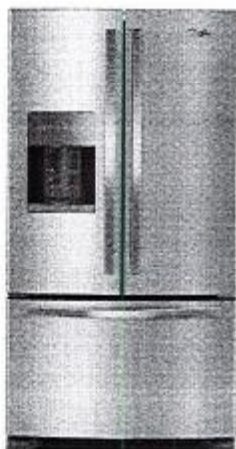
USA • 10200 David Taylor Drive • Charlotte, NC 28252 • 1-800-FRIGIDAIRE • [frigidaire.com](http://frigidaire.com)  
 CANADA • 5855 Terry Fox Way • Mississauga, ON L5V 3E4 • 1-800-265-8352 • [frigidaire.ca](http://frigidaire.ca)

*Note: For planning purposes only. Always consult local and national electric, gas and plumbing codes. Refer to Product Installation Guide for detailed installation instructions on the web at [frigidaire.com](http://frigidaire.com) / [frigidaire.ca](http://frigidaire.ca). Specifications subject to change. Accessories information available on the web at [frigidaire.com](http://frigidaire.com) / [frigidaire.ca](http://frigidaire.ca).*

FFGH3054U 09/18  
 © 2018 Electrolux Home Products, Inc.

Prepared by  
Josh Robins  
josh@noobody.com

Lot: 46 Havelock Corners Pt. 4A  
Re: Fridge Specs



## 36-inch Wide French Door Refrigerator in Fingerprint-Resistant Stainless Steel - 25 cu. ft.

WRF555SDFZ

Available Finishes/Colours

WRF555SDFZ  
FingerPrint Resistant Stainless Steel

### Dimensions

Depth	35 1/4
Height	70 1/8
Width	35 5/8

### Configuration and Overview

Advance Foam Insulation	99.9% lower Global Warming Potential and Better Energy Performance
-------------------------	--------------------------------------------------------------------------------

Counter Depth	No
Number of Doors	3

### Compatibility

Connectivity	No
Works With	No

### Details

Advance Foam Insulation	99.9% lower Global Warming Potential and Better Energy Performance
-------------------------	--------------------------------------------------------------------------------

### Details

Cooling Type	Single Evaporator
--------------	----------------------

Counter Depth	No
---------------	----

### Controls

Control Type	Electronic
--------------	------------

Air Filter Indicator/Reset	No
----------------------------	----

Automatic Defrost	Yes
-------------------	-----

Verrouillage des commandes	Yes
----------------------------	-----

LCD Touch Screen	No
------------------	----

Door Ajar/Open Alarm	Yes
----------------------	-----

Max Cool/Fast Cool	PowerCold
--------------------	-----------

Water Filter Indicator/Reset	Yes
------------------------------	-----

Organize foods for your family in this Whirlpool® french door refrigerator available in fingerprint-resistant stainless steel. A humidity-controlled double crisper and two-tier freezer storage provide plenty of room. Spillproof shelves help contain spills and for filtered water right at hand, this refrigerator features an exterior water dispenser with EveryDrop™ ice and water filtration.

### Top Features

ENERGY STAR® Certified

Spillproof Shelves

Humidity-Controlled Double Crisper

### Manuals & Literature:

- Dimension Guide
- Energy Guide
- Use and Care Guide
- Warranty Information

SEE ATTACHED FOR SIGNATURES



Whirlpool

Because Whirlpool Corporation policy includes a continuous commitment to improve our products, we reserve the right to change materials and specifications without notice. Dimensions are for planning purposes only. For complete details, see installation instructions packed with product. Specifications subject to change without notice.



Lot: 46 Havelock Corners PH 4A Re: Fridge Specs Cont  
French Door w/Ice Dispenser Refrigerator

4A -

Lot 46

#### PRODUCT MODEL NUMBERS

WRF555SDF WRF555SDH

**Electrical:** A 115-volt, 60 Hz, AC-only 15- or 20-amp fused, grounded electrical supply is required. It is recommended that a separate circuit serving only your refrigerator and approved accessories be provided. Use an outlet that cannot be turned off by a switch. Do not use an extension cord.

**Water:** A cold water supply with water pressure between 35 and 120 psi (241 and 827 kPa) is required to operate the water dispenser and ice maker. If you have questions about your water pressure, call a licensed, qualified plumber.

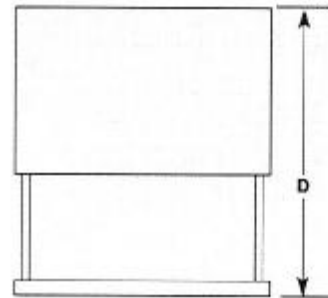
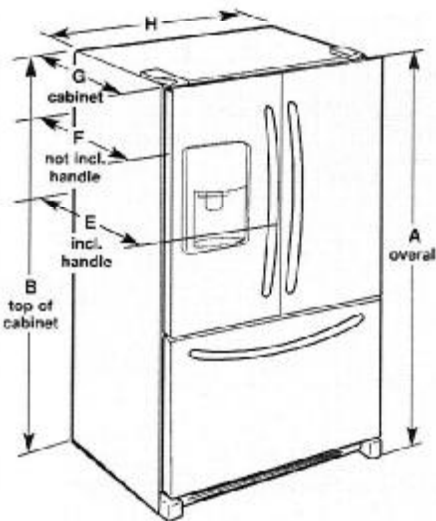
**NOTE:** If the water pressure is less than what is required, the flow of water from the water dispenser could decrease or ice cubes could be hollow or irregular shaped.

#### Reverse Osmosis Water Supply:

**IMPORTANT:** The pressure of the water supply coming out of a reverse osmosis system going to the water inlet valve of the refrigerator needs to be between 35 and 120 psi (241 and 827 kPa).

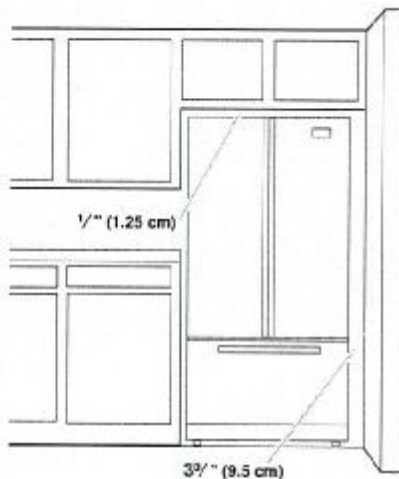
If a reverse osmosis water filtration system is connected to your cold water supply, the water pressure to the reverse osmosis system needs to be a minimum of 40 to 60 psi (276 to 414 kPa).

#### PRODUCT DIMENSIONS



Model Size	Height - Overall "A"	Height - Top of Cabinet "B"	Depth - Door Open 90° "C"	Depth - Drawer Open "D"	Depth - With Handles "E"	Depth - Without Handles "F"	Depth - Cabinet Only "G"	Width - Cabinet "H"
24.7 cu. ft.	70 1/4" (178.4 cm)	68 1/4" (174.3 cm)	48" (121.9 cm)	54" (137.2 cm)	35 1/4" (89.5 cm)	32 1/4" (83.5 cm)	25" (73.7 cm)	35 1/4" (90.5 cm)

#### LOCATION REQUIREMENTS



**IMPORTANT:** This refrigerator is designed for indoor, household use only.

To ensure proper ventilation for your refrigerator, allow for a 1/2" (1.25 cm) of space on each side and at the top. Allow for a 1" (2.54 cm) space behind the refrigerator. If your refrigerator has an ice maker, allow extra space at the back for the water line connections. When installing your refrigerator next to a fixed wall, leave a 3 3/4" (9.5 cm) minimum space between the refrigerator and wall to allow the door to swing open.

**NOTE:** This refrigerator is intended for use in a location where the temperature ranges from a minimum of 55°F (13°C) to a maximum of 110°F (43°C). The preferred room temperature range for optimum performance, which reduces electricity usage and provides superior cooling, is between 60°F (15°C) and 90°F (32°C). It is recommended that you do not install the refrigerator near a heat source, such as an oven or radiator.

SEE ATTACHED FOR SIGNATURES

