

KINGSMEN (THAMES) INC. / Havelock Corners (Kingsmen)

Lot/Unit: 97    Phase/Building: 4A    Model/Floor Plan: James (3601) Elev C 4 Bed - 2+1 Bath

Miscellaneous

Inv.4558 Line 58026 4Mar20 / 4Mar20	1 - As per SCHEDULE "PE" Vendor to install capped gas line ( rough in only ) at rear of home for future BBQ location. Location to be finalized at vendors sole discretion. Note:	
Inv.4558 Line 58027 4Mar20 / 4Mar20	1 - As per SCHEDULE "PE" Vendor to supply & install air conditioning unit, sized accordingly, from vendors standard samples. Note:	
Inv.4558 Line 58029 4Mar20 / 4Mar20	1 - To supply & install the Opt. door in the main bathroom.... see sketch # 2 Note:	

Cabinetry

Inv.4558 Line 58030 4Mar20 / 4Mar20	1 - Purchaser has upgraded to a chimney hood fan, see spec's attached. Note:	
Inv.4558 Line 58049 4Mar20 / 4Mar20	1 - To supply & install deep fridge uppers with 2 gables using the standard level of cabinetry in the kitchen.... see sketch # 1 Note: See attached for fridge specifications.	

CABINETRY VANITY

Inv.4558 Line 58047 4Mar20 / 4Mar20	1 - To supply & install VANITY BANK OF DRAWERS - 55 CM MAXIMUM - STANDARD LINE in the master ensuite... see sketch # 2 Note:	
---	---	--

Electrical

Inv.4558 Line 58031 4Mar20 / 4Mar20	1 - To supply & install a 30" CYCLONE SCB722 chimney hood fan in the kitchen in lieu of the standard hood fan....see spec's Note:	
Inv.4558 Line 58034 4Mar20 / 4Mar20	1 - Relocate the std. ceiling light in the kitchen over to the breakfast bar area.... see sketch # 1 Note:	
Inv.4558 Line 58035 4Mar20 / 4Mar20	1 - To supply & install ONE POT LIGHT FIRST FLOOR - LED in the kitchen.... see sketch # 1 Note: This pot light will be connected to a sep. switch, switch is sold sep.	
Inv.4558 Line 58036 4Mar20 / 4Mar20	1 - To supply & install a SWITCH - ADDITIONAL INTERIOR SINGLE POLE SWITCH connected to the one upgraded pot light in the kitchen. Note:	

**KINGSMEN (THAMES) INC. / Havelock Corners (Kingsmen)**

**Lot/Unit: 97    Phase/Building: 4A    Model/Floor Plan: James (3601) Elev C 4 Bed - 2+1 Bath**

Inv.4558	1 - To supply & install one POT LIGHT FIRST FLOOR - LED in the great room... see sketch # 1	
Line 58037	Note: This pot light will be connected to a sep. switch, switch is sold sep.	
4Mar20 / 4Mar20		
Inv.4558	1 - To supply & install a SWITCH - ADDITIONAL INTERIOR SINGLE POLE SWITCH connected to the upgraded pot light in the great room.	
Line 58038	Note:	
4Mar20 / 4Mar20		
Inv.4558	1 - Relocate the std. ceiling light from the upper stair landing to the O.T.B. area on the 2nd. floor.... see sketch #2	
Line 58039	Note:	
4Mar20 / 4Mar20		
Inv.4558	1 - To supply & install a receptacle at approx. 66 " +- up from the floor centered + - to the F/P mantle in the great room area.... see sketch # 1	
Line 58041	Note:	
4Mar20 / 4Mar20		
Inv.4558	1 - To supply & install a conduit pipe at approx. 66 " +- up from the floor next to + - the upgraded electrical outlet centered +- to the F/P mantle and terminated next to the std. T.V. rough in in the niche area... see sketch # 1	
Line 58042	Note:	
4Mar20 / 4Mar20		
Inv.4558	1 - To supply & install the standard T.V. rough in in the great room and master bedroom.... see sketch # 1 & 2	
Line 58043	Note:	
4Mar20 / 4Mar20		
Inv.4558	1 - To supply & install the standard Phone rough in in the kitchen, great room and master bedroom....see sketch # 1 & # 2	
Line 58044	Note:	
4Mar20 / 4Mar20		

**PLUMBING**

Inv.4558	1 - To supply & install the WATERLINE ROUGH-IN TO THE FRIDGE LOCATION (NO HOOK UP) for the future fridge...	
Line 58032	Note:	
4Mar20 / 4Mar20		



CONSTRUCTION SUMMARY

KINGSMEN (THAMES) INC. / Havelock Corners (Kingsmen)

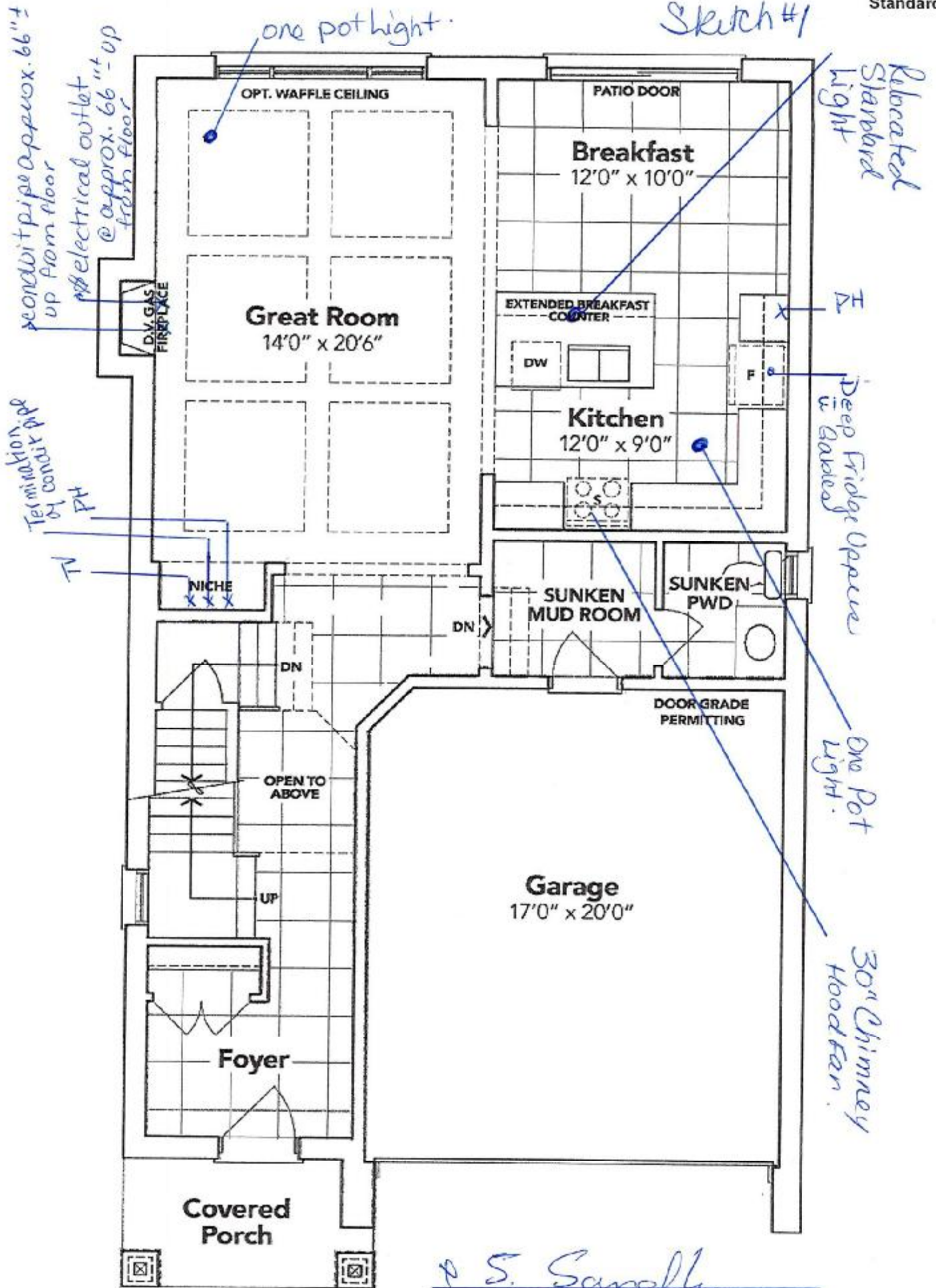
Lot/Unit: 97    Phase/Building: 4A    Model/Floor Plan: James (3601) Elev C 4 Bed - 2+1 Bath

EXTRAS AS PER OFFER

5 FREE APPLIANCES ? STAINLESS STEEL FRONT - FRIDGE: STOVE AND DISHWASHER. WHITE WASHER AND DRYER (SUPPLIED ONLY, NOT INSTALLED, FROM BUILDERS STANDARD LINE) TO ARRANGE DELIVERY ? CALL THE BRICK COMMERCIAL SALES DIVISION AT 1-877-353-2850. <i>Worksheet</i> Note:	
VENDOR TO INSTALL CAPPED GAS LINE (ROUGH-IN ONLY) AT REAR OF HOME FOR FUTURE BBQ LOCATION.   LOCATION TO BE FINALIZED AT VENDORS SOLE DISCRETION. <i>Worksheet</i> Note:	
VENDOR TO SUPPLY & INSTALL AIR CONDITIONING UNIT, SIZED ACCORDINGLY, FROM VENDORS STANDARD SAMPLES. <i>Worksheet</i> Note:	

# Floor Plan

Phase 4A  
Model: James (3601) Elev C 4 Bed - 2+1 Bath  
Standard



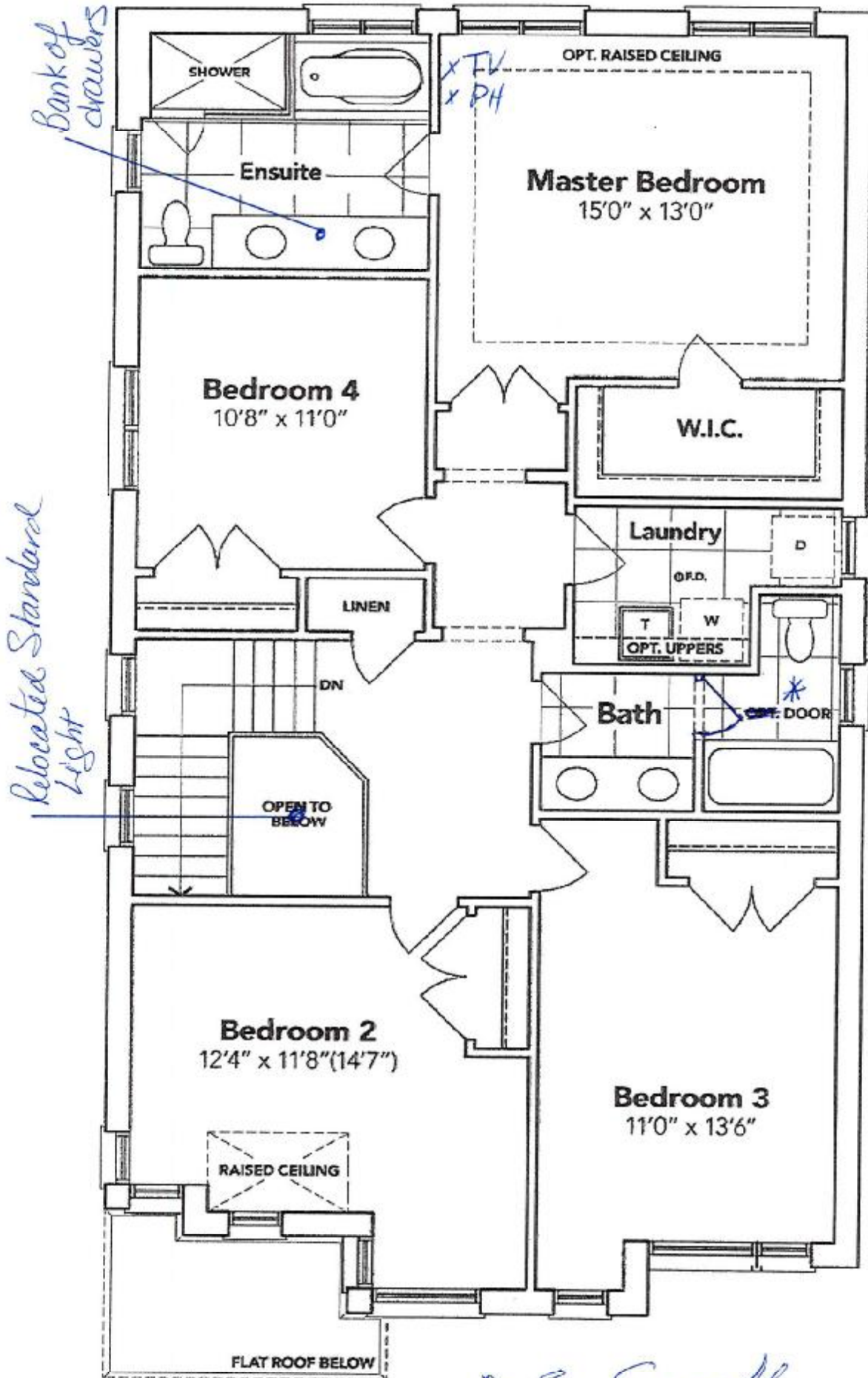
## GROUND FLOOR EL. C

The floor plans and elevations shown are pre-construction plans and may be revised or improved as necessitated by architectural controls and the construction process. The measurements adhere to the rules and regulations of the TARION Warranty Corporation's official method for the calculation of floor area. Materials, specifications and floor plans are subject to change without notice. All house renderings are artist's concept only. Actual usable floor space may vary from the stated floor area. All options shown are upgrades. E. & O. E.

Floor Plan

Phase 4A  
Model: James (3601) Elev C 4 Bed - 2+1 Bath  
Standard

Sketch #2



*S. Saville*

SECOND FLOOR EL. C

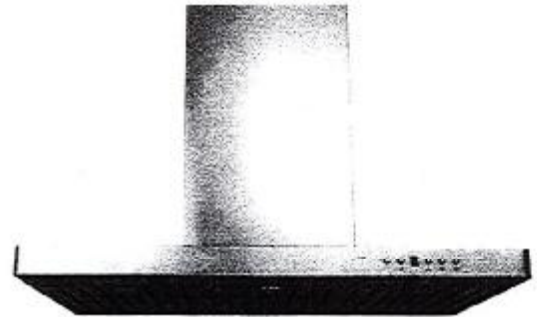
The floor plans and elevations shown are pre-construction plans and may be revised or improved as necessitated by architectural controls and the construction process. The measurements adhere to the rules and regulations of the TARIION Warranty Corporation's official method for the calculation of floor area. Materials, specifications and floor plans are subject to change without notice. All house renderings are artist's concept only. Actual usable floor space may vary from the stated floor area. All options shown are upgrades. E. & O. E.

4A -  
Lot 97

Lot: 97 Havelock Corners PH. 4A  
Re: Chimney Hood Fan 30"

## Specifications

Air Flow Volume: 650 CFM  
Electrical Connection: 120V/60Hz  
Power Consumption: 240 Watts  
Current: 2.0 Amps  
Fan Speed: 1599 RPM  
Finishes: Stainless Steel  
Duct: 6" Round  
Knock-out: 6" Round - Top Only  
Dimensions: Width: 30"/36"  
Height: 44 1/2"  
Depth: 19 3/4"  
Noise Level: Min. 2 Sones  
Max. 7 Sones



SCB722 - Baffle Filter



P. S. Santh

## Ordering Model Chart

Model	Colour	Knock-out	Duct	Size	Filter	CFM
SCB72230	Stainless Steel	6"	6" Round	30"	Baffle	650
SCB72236	Stainless Steel	6"	6" Round	36"	Baffle	650

## Notes

---

---

---

---

---

---

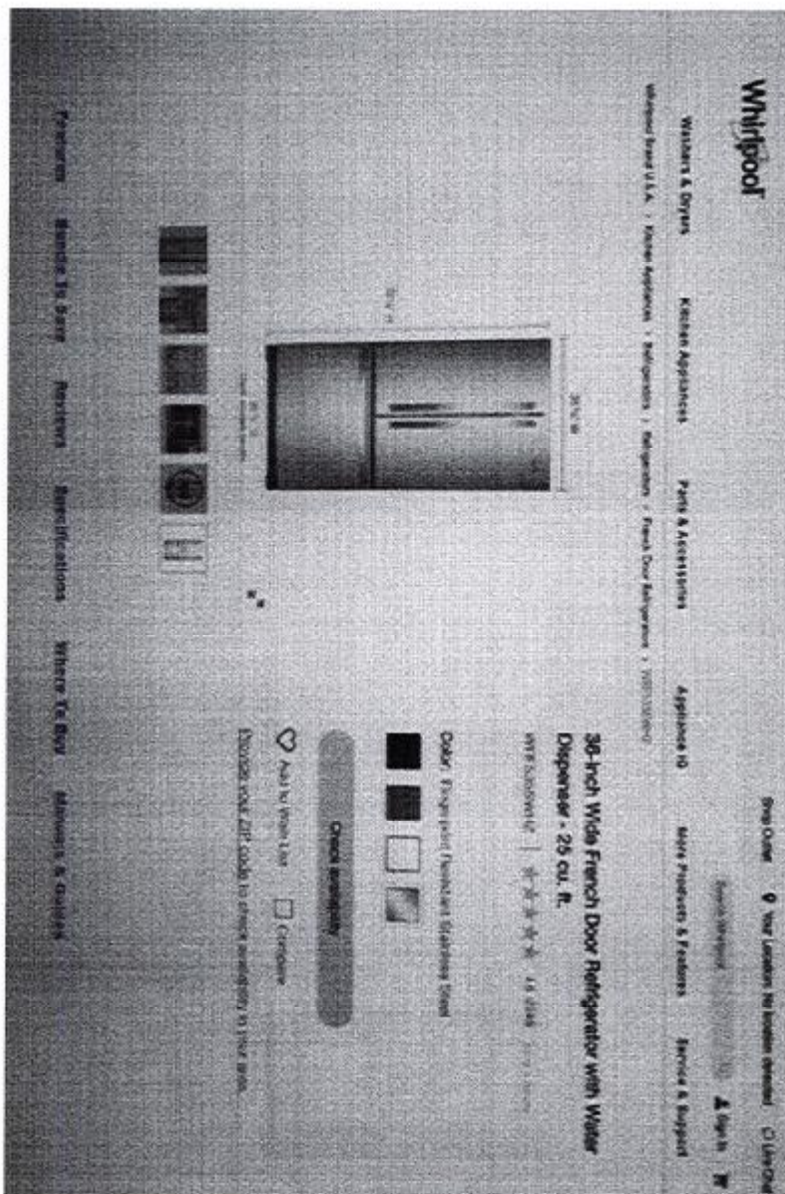
---

**Cyclone®**

4A -  
Lo + 97

LOT: 97 Havelock Corners PH: 4A  
Re: Fridge Specifications

CONFIRMED BY EMAIL



Whirlpool WRF535SWHZ

Lot: 97 Hawelock Corners PH. 4A

4A -  
Lot 97

## Specifications

Re Fridge Specifications  
Con't

### Dimensions

#### Cabinet Width

35-5/8 in

#### Capacity

25-1/5

#### Depth

35-1/2 in

#### Depth Closed Excluding Handles

33.0 in

#### Depth Closed Including Handles

35-1/2 in

#### Depth Excluding Doors

29-1/8 in

#### Depth With Door Open 90 Degree

48-1/8 in

#### Freezer Volume

7.44 cu. ft.

#### Height

70-1/8 in

#### Height To Top Of Cabinet

68-7/8 in

#### Height To Top Of Door Hinge

70-1/8 in

#### Refrigerator Volume

17.75 cu. ft.

#### Total Volume

25.2 cu. ft.

#### Width

35-5/8 in

CONFIRMED BY EMAIL