



CONSTRUCTION SUMMARY

KINGSMEN (THAMES) INC. / Havelock Corners (Kingsmen)

Lot/Unit: 33 Phase/Building: 4A Model/Floor Plan: James (3601) Elev A 4 Bed - 2+1 Bath

.Miscellaneous

Inv.4556	1 - To supply & install the optional door in the main bathroom.... see sketch # 2	
Line 57997	Note:	
2Mar20 / 2Mar20		

CABINETRY VANITY

Inv.4556	1 - To supply & install a VANITY TOP DRAWER PRICE PER DRAWER - INCLUDE FALSE DRAWERS - STANDARD LINE in the master ensuite bathroom.... see sketch # 2	
Line 58008	Note:	
2Mar20 / 2Mar20		
Inv.4556	1 - To supply & install a VANITY TOP DRAWER PRICE PER DRAWER - INCLUDE FALSE DRAWERS - STANDARD LINE in the main bathroom.... see sketch # 2	
Line 58009	Note:	
2Mar20 / 2Mar20		

Electrical

Inv.4556	1 - Relocate the std. ceiling light from the upper stair case landing over to the O.T.B. area... see sketch # 2	
Line 57998	Note:	
2Mar20 / 2Mar20		
Inv.4556	1 - To supply & install a receptical at approx. 66 " + - up from the floor centered + - to the F/P mantle in the great room... see sketch # 1	
Line 58000	Note:	
2Mar20 / 2Mar20		
Inv.4556	1 - To supply & install the standard T.V. rough in in the great room and master bedroom...see sketch # 1 & # 2	
Line 58001	Note: The standard T.V. rough in in the great room needs to be installed at approx. 66" + - up from the floor, centered + - to the F/P mantle next to + - the upgraded electrical outlet.	
2Mar20 / 2Mar20		
Inv.4556	1 - To supply & install the standard Phone rough in in the kitchen, master bedroom and bedroom # 2... see sketch # 1 & # 2	
Line 58002	Note:	
2Mar20 / 2Mar20		

Heating And Air Conditioning

Inv.4556	1 - As per SCHEDULE " PE " Vendor to insatll capped gas line (rough in only) at rear of home for future BBQ location. Location to be finalized at Vendors sole discretion.	
Line 57990	Note:	
2Mar20 / 2Mar20		
Inv.4556	1 - As per SCHEDULE " PE " Vendor to supply & install air conditioning unit, sized accordingly, from vendors standard samples.	
Line 57991	Note:	
2Mar20 / 2Mar20		



CONSTRUCTION SUMMARY

KINGSMEN (THAMES) INC. / Havelock Corners (Kingsmen)

Lot/Unit: 33 Phase/Building: 4A Model/Floor Plan: James (3601) Elev A 4 Bed - 2+1 Bath

EXTRAS AS PER OFFER

5 FREE APPLIANCES ? STAINLESS STEEL FRONT - FRIDGE: STOVE AND DISHWASHER. WHITE WASHER AND DRYER (SUPPLIED ONLY, NOT INSTALLED, FROM BUILDERS STANDARD LINE) TO ARRANGE DELIVERY ? CALL THE BRICK COMMERCIAL SALES DIVISION AT (416) 249-4373. <i>Worksheet</i> Note:	
VENDOR TO INSTALL CAPPED GAS LINE (ROUGH-IN ONLY) AT REAR OF HOME FOR FUTURE BBQ LOCATION. LOCATION TO BE FINALIZED AT VENDORS SOLE DISCRETION. <i>Worksheet</i> Note:	
VENDOR TO SUPPLY & INSTALL AIR CONDITIONING UNIT, SIZED ACCORDINGLY, FROM VENDORS STANDARD SAMPLES. <i>Worksheet</i> Note:	

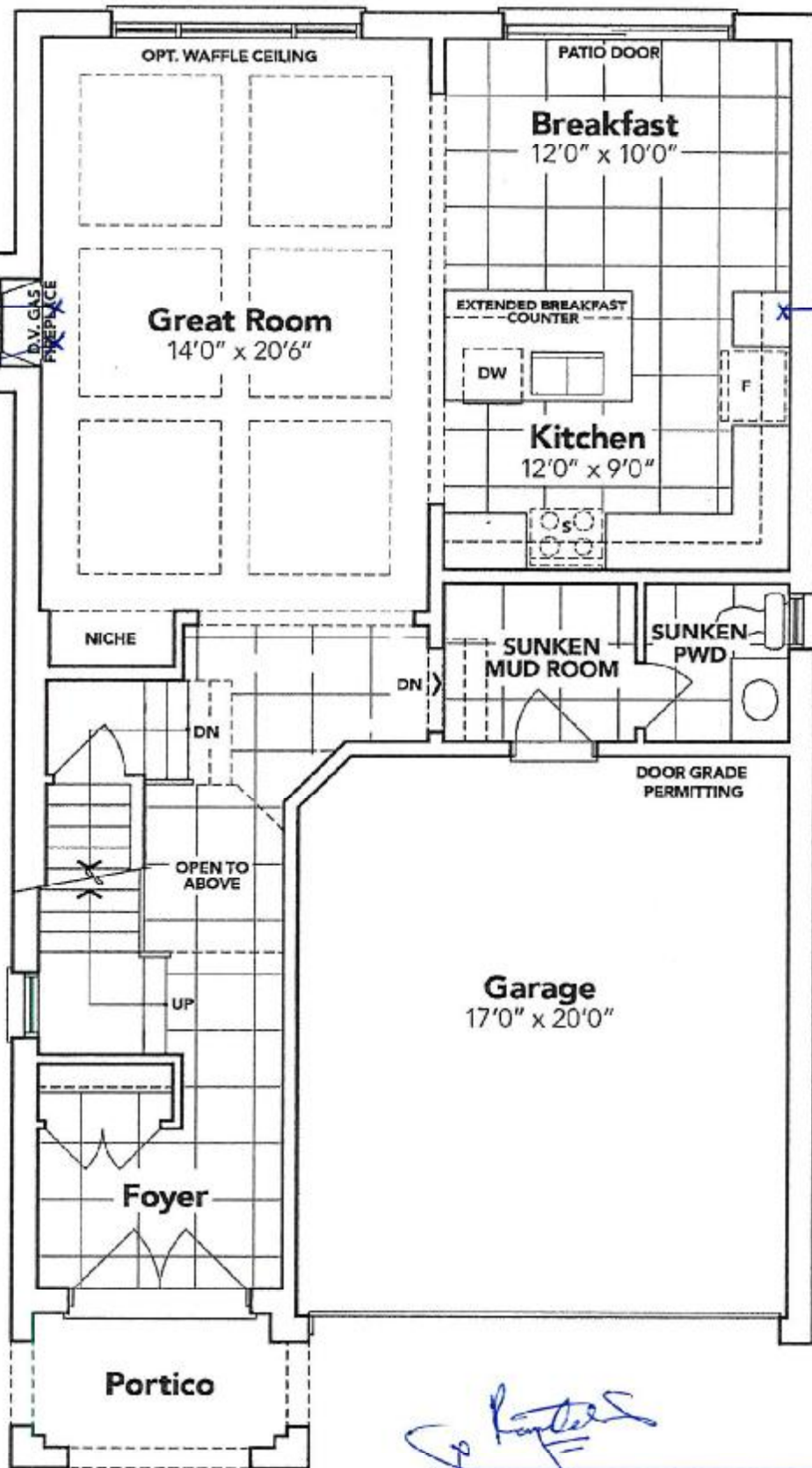
SCHEDULE "B-1"

Floor Plan

Lot 33
Phase 4A
Model: James (3601) Elev A 4 Bed - 2+1 Bath
Standard

install elec. outlet
TV @ 66" up
from the floor

Sketch
#1



GROUND FLOOR EL. A

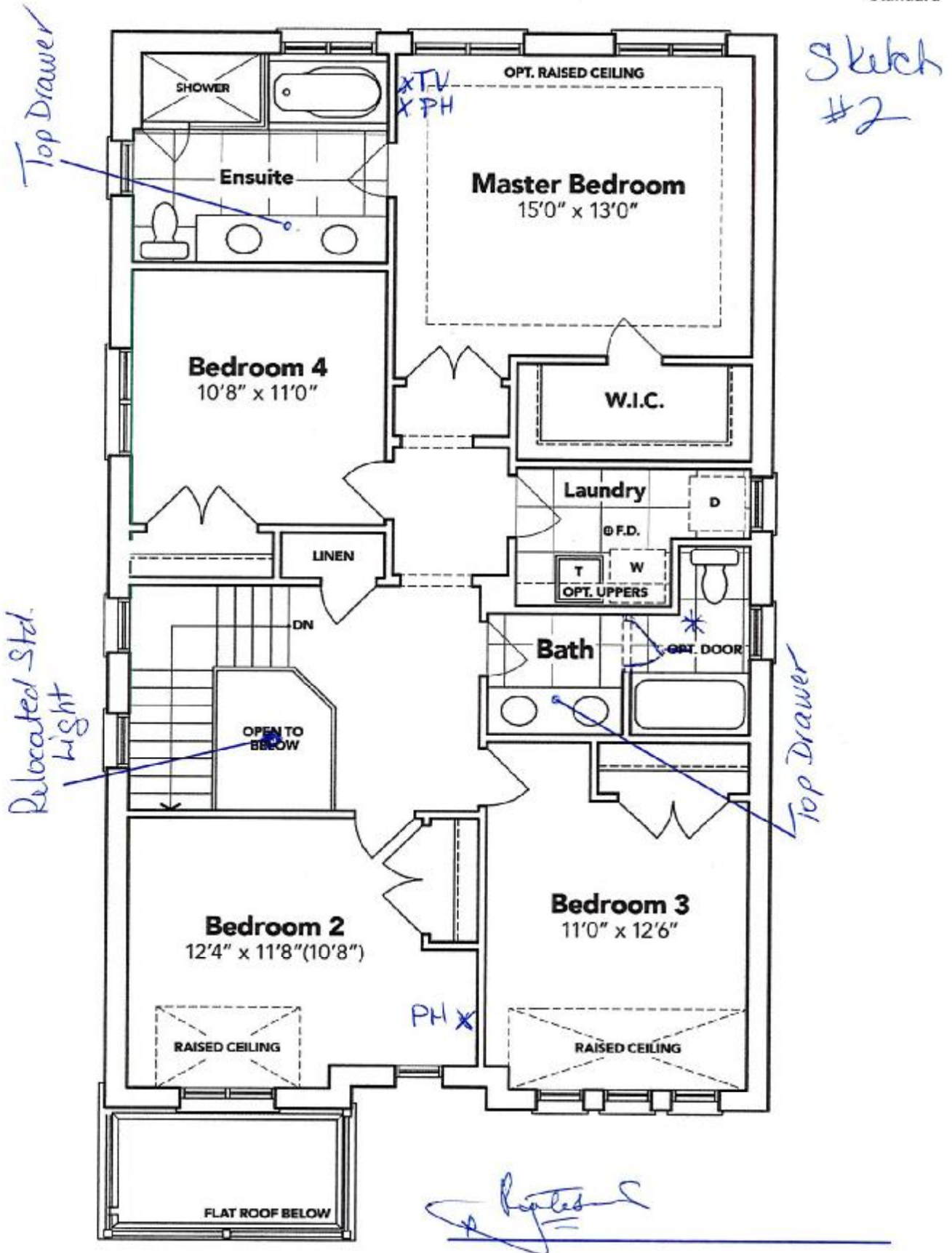
The floor plans and elevations shown are pre-construction plans and may be revised or improved as necessitated by architectural controls and the construction process. The measurements adhere to the rules and regulations of the TARIION Warranty Corporation's official method for the calculation of floor area. Materials, specifications and floor plans are subject to change without notice. All house renderings are artist's concept only. Actual usable floor space may vary from the stated floor area. All options shown are upgrades. E. & O. E.



SCHEDULE "B-1"

Floor Plan

Lot 33
Phase 4A
Model: James (3601) Elev A 4 Bed - 2+1 Bath
Standard



SECOND FLOOR EL. A

The floor plans and elevations shown are pre-construction plans and may be revised or improved as necessitated by architectural controls and the construction process. The measurements adhere to the rules and regulations of the TARION Warranty Corporation's official method for the calculation of floor area. Materials, specifications and floor plans are subject to change without notice. All house renderings are artist's concept only. Actual usable floor space may vary from the stated floor area. All options shown are upgrades. E. & O. E.