



CONSTRUCTION SUMMARY

KINGSMEN (THAMES) INC. / Havelock Corners (Kingsmen)

Lot/Unit: 31 Phase/Building: 4A Model/Floor Plan: James (3601) Elev A 4 Bed - 2+1 Bath

Miscellaneous

Inv.4560	1 - To supply & install the OPT. door in the Main bathroom.... see sketch # 2	
Line 58093	Note:	
5Mar20 / 5Mar20		

Electrical

Inv.4560	1 - To supply & install a condit pipe at approx. 66" + - up from the floor centered + - to the F/P mantle in the great room and have it terminated in the Niche area next to + - the std. T.V. rough in in the great room.... see sketch # 1	
Line 58095	Note: This is for a future wall mount T.V.	
5Mar20 / 5Mar20		
Inv.4560	1 - To supply & install a receptcable at approx. 66" + - up from the floor next to + - upgraded condit pipe centered + - to the F/P mantle in the Great room...see sketch # 1	
Line 58096	Note: This is for a future wall mount T.V.	
5Mar20 / 5Mar20		
Inv.4560	1 - To supply & install the standard T.V. rough in in the great room and master bedroom...see sketch # 1 & # 2	
Line 58097	Note:	
5Mar20 / 5Mar20		
Inv.4560	1 - To supply & install the standard Phone rough in in the Kitchen, Great room and Bedroom # 2...see sketch # 1 & # 2	
Line 58098	Note:	
5Mar20 / 5Mar20		
Inv.4560	1 - Relocate the standard ceiling light from the upper stair landing to the O.T.B. area on the second floor....see sketch # 2	
Line 58099	Note:	
5Mar20 / 5Mar20		

Heating And Air Conditioning

Inv.4560	1 - As per SCHEDULE "PE" Vendor to supply & install air conditioning unit, sized accordingly, from vendors standard samples.	
Line 58090	Note:	
5Mar20 / 5Mar20		
Inv.4560	1 - As per SCHEDULE "PE" Vendor to install capped gas line (rough in only) at rear of home for future BBQ location. Location to be finalized at vendors sole discretion.	
Line 58091	Note:	
5Mar20 / 5Mar20		

PLUMBING

Inv.4560	1 - To supply & install the WATERLINE ROUGH-IN TO THE FRIDGE LOCATION (NO HOOK UP) in the kitchen.	
Line 58094	Note:	
5Mar20 / 5Mar20		



CONSTRUCTION SUMMARY

KINGSMEN (THAMES) INC. / Havelock Corners (Kingsmen)

Lot/Unit: 31 Phase/Building: 4A Model/Floor Plan: James (3601) Elev A 4 Bed - 2+1 Bath

EXTRAS AS PER OFFER

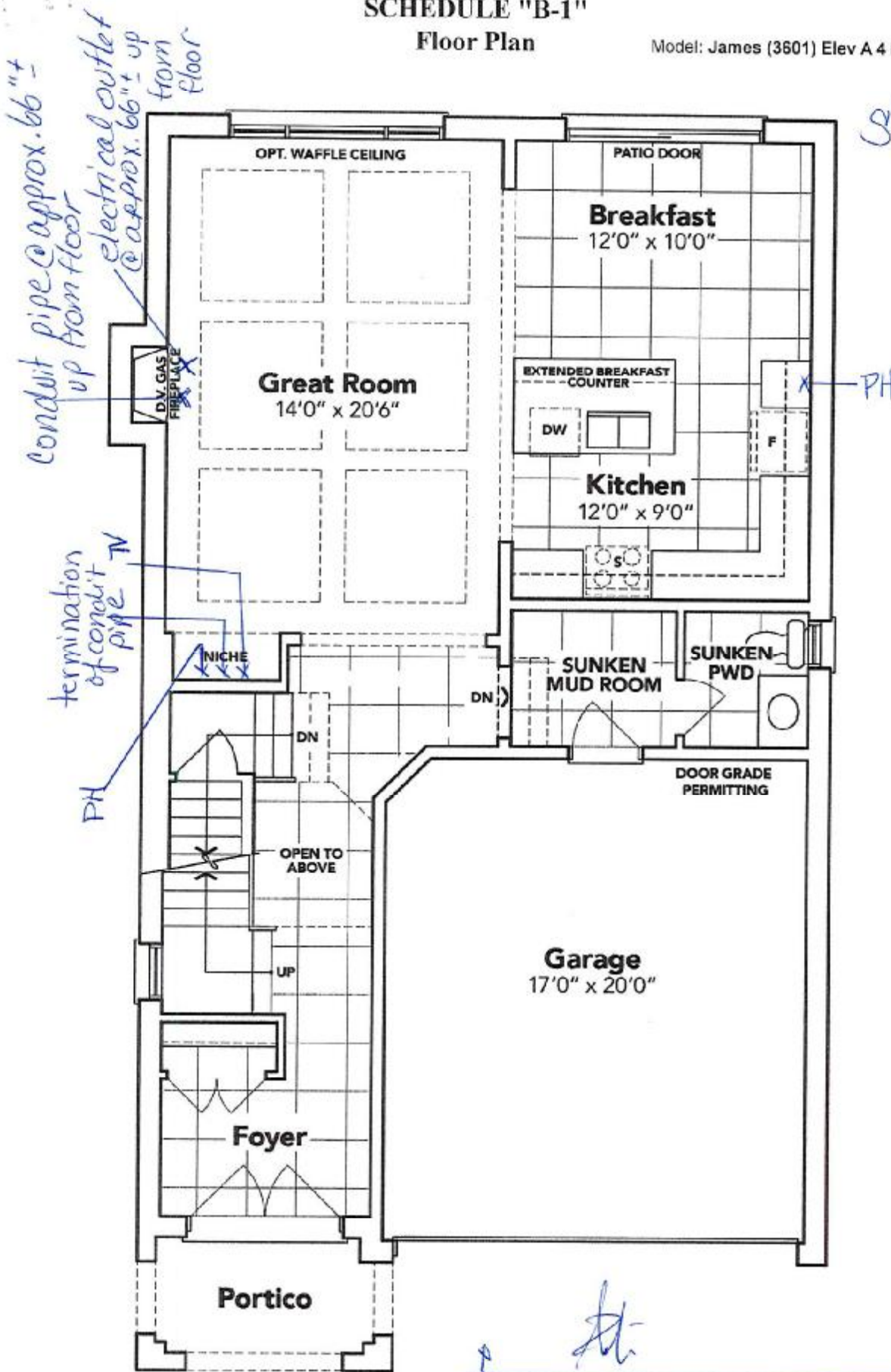
5 FREE APPLIANCES ? STAINLESS STEEL FRONT - FRIDGE: STOVE AND DISHWASHER. WHITE WASHER AND DRYER (SUPPLIED ONLY, NOT INSTALLED, FROM BUILDERS STANDARD LINE) TO ARRANGE DELIVERY ? CALL THE BRICK COMMERCIAL SALES DIVISION AT (416) 249-4373. <i>Worksheet</i> Note:	
VENDOR TO SUPPLY & INSTALL AIR CONDITIONING UNIT, SIZED ACCORDINGLY, FROM VENDORS STANDARD SAMPLES. <i>Worksheet</i> Note:	
VENDOR TO INSTALL CAPPED GAS LINE (ROUGH-IN ONLY) AT REAR OF HOME FOR FUTURE BBQ LOCATION. LOCATION TO BE FINALIZED AT VENDORS SOLE DISCRETION. <i>Worksheet</i> Note:	

SCHEDULE "B-1"

Floor Plan

Lot 31
Phase 4A
Model: James (3601) Elev A 4 Bed - 2+1 Bath
Standard

Sketch #1



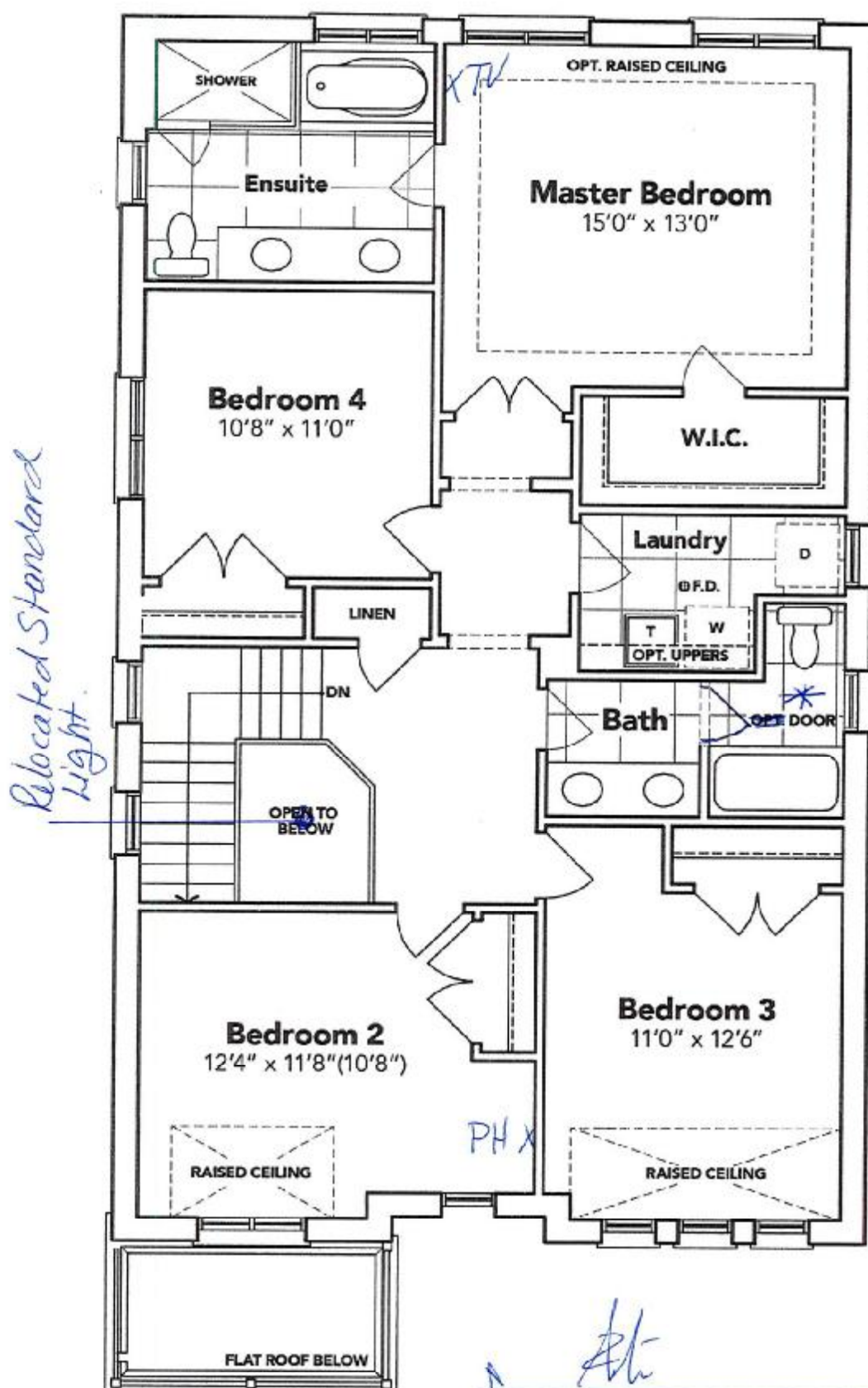
GROUND FLOOR EL. A

The floor plans and elevations shown are pre-construction plans and may be revised or improved as necessitated by architectural controls and the construction process. The measurements adhere to the rules and regulations of the TARION Warranty Corporation's official method for the calculation of floor area. Materials, specifications and floor plans are subject to change without notice. All house renderings are artist's concept only. Actual usable floor space may vary from the stated floor area. All options shown are upgrades. E. & O. E.

SCHEDULE "B-1"

Floor Plan

Lot 31
Phase 4A
Model: James (3601) Elev A 4 Bed - 2+1 Bath
Standard



SECOND FLOOR EL. A

The floor plans and elevations shown are pre-construction plans and may be revised or improved as necessitated by architectural controls and the construction process. The measurements adhere to the rules and regulations of the TARIION Warranty Corporation's official method for the calculation of floor area. Materials, specifications and floor plans are subject to change without notice. All house renderings are artist's concept only. Actual usable floor space may vary from the stated floor area. All options shown are upgrades. E. & O. E.