



CONSTRUCTION SUMMARY

KINGSMEN (THAMES) INC. / Havelock Corners (Kingsmen)

Lot/Unit: 100 Phase/Building: 4A Model/Floor Plan: Edward (3602) Elev C 4 Bed - 2+1 Bath

Miscellaneous

Inv.4549	1 - To supply & install a HUMMIDIFIER to the furnace.	
Line 57910	Note:	
21Feb20 / 21Feb20		

Electrical

Inv.4549	1 - To supply & install a capped ceiling electrical on a 3 way switch to the O.T.B. area see sketch	
Line 57904	Note:	
21Feb20 / 21Feb20		
Inv.4549	1 - Reinforce the upgraded cap in the O.T.B. area see sketch	
Line 57905	Note:	
21Feb20 / 21Feb20		
Inv.4549	1 - To supply & install an OUTLET - DUPLEX - 110V at approx. 66 " +- up from the floor next to + - the upgraded conduit pipe, centered + - to the F/P mantle.... see sketch	
Line 57906	Note:	
21Feb20 / 21Feb20		
Inv.4549	1 - To supply & install a conduit pipe at approx. 66 " +- up from the floor centered to the F/P mantle and terminated next to the std. T.V. roug in in the great room... see sketch	
Line 57907	Note:	
21Feb20 / 21Feb20		
Inv.4549	1 - To supply & install the std. T.V. rough in's one in the great room and one in the master bedroom...see sketch	
Line 57908	Note:	
21Feb20 / 21Feb20		
Inv.4549	1 - To supply & install the std. PHONE rough in's one in the kitchen, one in the master bedroom and one in Bedroom #3....see sketch	
Line 57909	Note:	
21Feb20 / 21Feb20		

PLUMBING

Inv.4549	1 - WATERLINE ROUGH-IN TO THE FRIDGE LOCATION (NO HOOK UP)	
Line 57903	Note:	
21Feb20 / 21Feb20		



CONSTRUCTION SUMMARY

KINGSMEN (THAMES) INC. / Havelock Corners (Kingsmen)

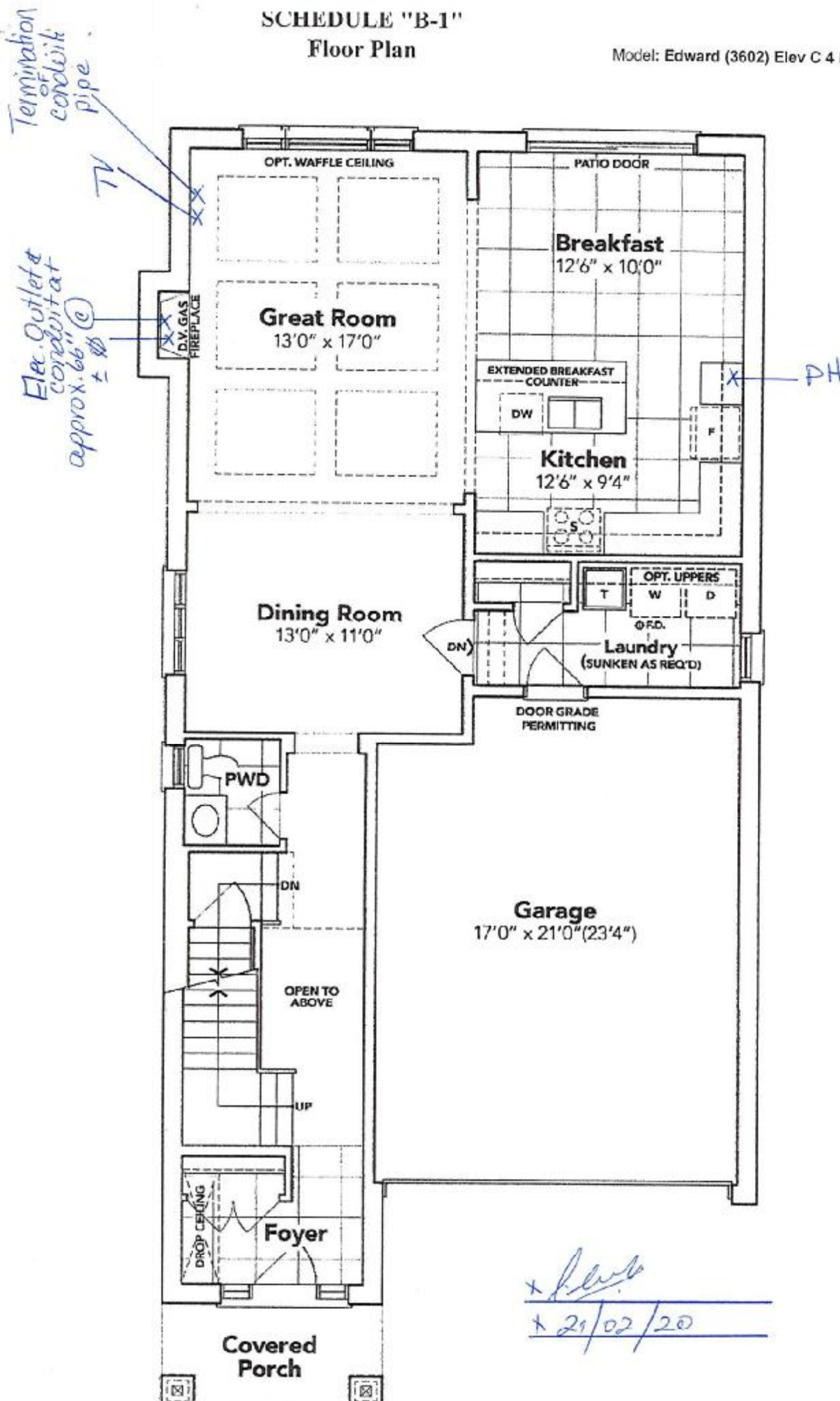
Lot/Unit: 100 Phase/Building: 4A Model/Floor Plan: Edward (3602) Elev C 4 Bed - 2+1
Bath

EXTRAS AS PER OFFER

5 FREE APPLIANCES ? STAINLESS STEEL FRONT - FRIDGE: STOVE AND DISHWASHER. WHITE WASHER AND DRYER (SUPPLIED ONLY, NOT INSTALLED, FROM BUILDERS STANDARD LINE) TO ARRANGE DELIVERY ? CALL THE BRICK COMMERCIAL SALES DIVISION AT 1-877-353-2850. <i>Worksheet</i> Note:	
VENDOR TO INSTALL CAPPED GAS LINE (ROUGH-IN ONLY) AT REAR OF HOME FOR FUTURE BBQ LOCATION. LOCATION TO BE FINALIZED AT VENDORS SOLE DISCRETION. <i>Worksheet</i> Note:	
VENDOR TO SUPPLY & INSTALL AIR CONDITIONING UNIT, SIZED ACCORDINGLY, FROM VENDORS STANDARD SAMPLES. <i>Worksheet</i> Note:	
VENDOR TO INCLUDE LEVEL 1, 20CM GRANITE OR QUARTZ IN THE KITCHEN, AS PER PLAN, IN LIEU OF THE INCLUDED LAMINATE COUNTER TOPS. SELECTIONS TO BE MADE FROM BUILDERS STANDARD SAMPLES. <i>Worksheet</i> Note:	
VENDOR TO INCLUDE BUILDERSSTANDARD, ENGINEERED FLOORING IN NATURAL STAIN, THROUGHOUT THE SECOND LEVEL, IN LIEU OF INCLUDED CARPET, AS PER PLAN, <i>Worksheet</i> Note:	

SCHEDULE "B-1" Floor Plan

Lot 100
Phase 4A
Model: Edward (3602) Elev C 4 Bed - 2+1 Bath
Standard

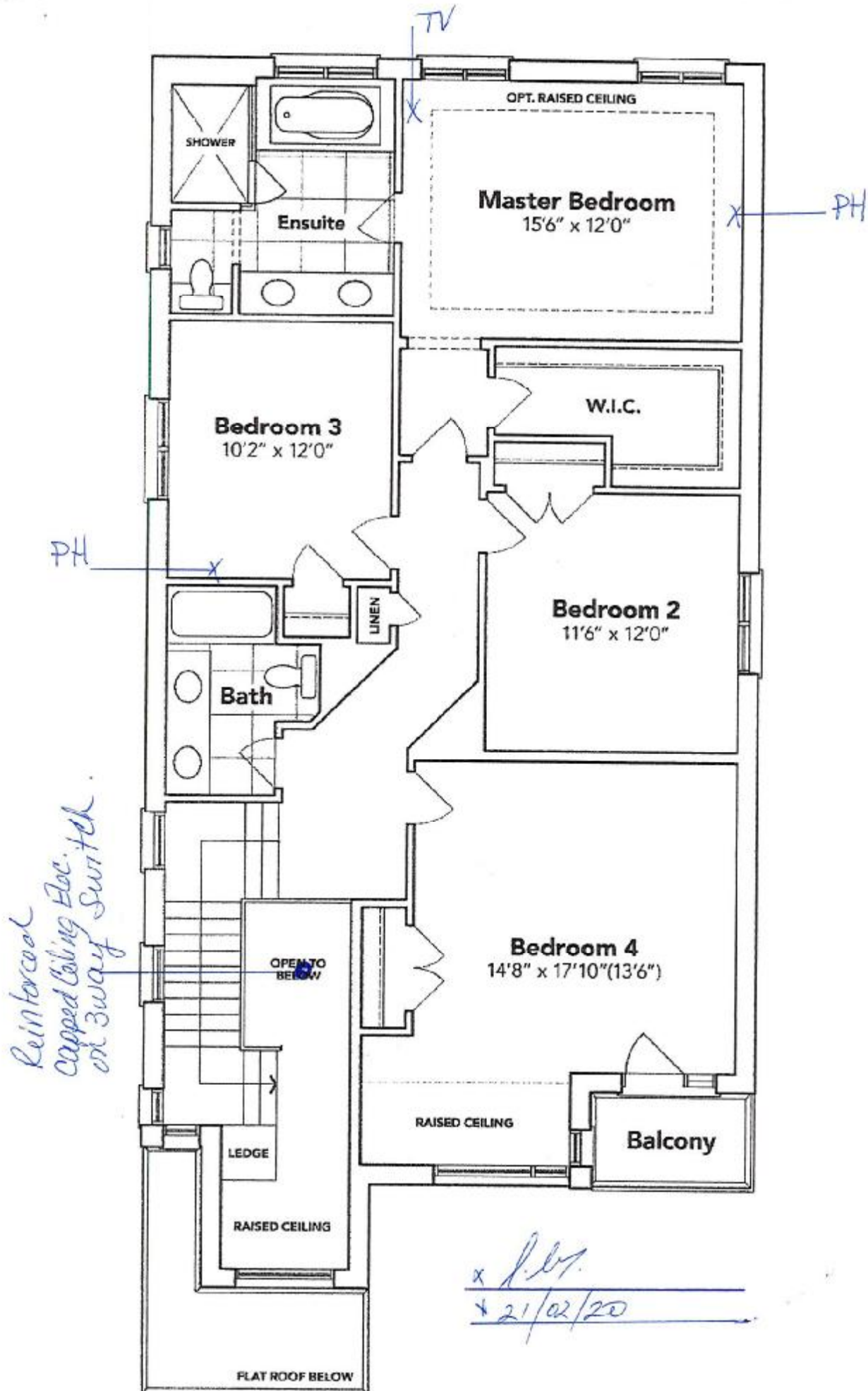


GROUND FLOOR EL. C

The floor plans and elevations shown are pre-construction plans and may be revised or improved as necessitated by architectural controls and the construction process. The measurements adhere to the rules and regulations of the TARION Warranty Corporation's official method for the calculation of floor area. Materials, specifications and floor plans are subject to change without notice. All house renderings are artist's concept only. Actual usable floor space may vary from the stated floor area. All options shown are upgrades. E. & O. E.

SCHEDULE "B-1"
Floor Plan

Lot 100
Phase 4A
Model: Edward (3602) Elev C 4 Bed - 2+1 Bath
Standard



SECOND FLOOR EL. C

The floor plans and elevations shown are pre-construction plans and may be revised or improved as necessitated by architectural controls and the construction process. The measurements adhere to the rules and regulations of the TARION Warranty Corporation's official method for the calculation of floor area. Materials, specifications and floor plans are subject to change without notice. All house renderings are artist's concept only. Actual usable floor space may vary from the stated floor area. All options shown are upgrades. E. & O. E.