



CONSTRUCTION SUMMARY

Carrville Investments Ltd. / Loggias of Richvale

Lot/Unit: 4 Phase/Building: 2 Model/Floor Plan: The Avanti (40-2) Elev C

Inv.4177	* 1 - LOCATION: KITCHEN ISLAND	
	SEE PE # 4,139-4 ITEM # 34 BASEBOARD MOULDING TO ISLAND WAS CHARGED AT \$1,890.00 HOWEVER THE DUMMY DOORS WERE MISSED IN THIS DESCRIPTION.	
Line 53415	Note: BASEBOARD MOULDING TO 2 SIDES OF ISLAND. WATERFALL SIDES.	
30Aug17 / 19Sep17		
Inv.4177	* 1 - LOCATION: KITCHEN	
	DELETE ITEM # 66 - PE #4,139-7 FRENDL KITCHENS HAS CONFIRMED THAT A SLIDE IN BASKET CANNOT BE ACCOMODATED AS PER DRAWING	
Line 53434	Note:	
30Aug17 / 19Sep17		
Inv.4177	* 1 - LOCATION: KITCHEN	
	REVISED ITEM # 33 - PE #4,139-4 FRENDL KITCHENS HAS CONFIRM THAT A TOTAL OF 6 TRAY DIVIDERS WILL BE PROVIDED ABOVE FRIDGE	
Line 53433	Note:	
30Aug17 / 19Sep17		
Inv.4177	* 1 - LOCATION: KITCHEN	
	SUPPLY AND INSTALL MAGIC CORNER IN LIEU OF SLIDE IN BASKET AS PER FRENDL DRAWING (31B)	
Line 53435	Note:	
30Aug17 / 19Sep17		
Inv.4177	A 1 - LOCATION: KITCHEN	
	SUPPLY AND INSTALL FOUR (4) FLIP UP DOORS ABOVE FRIDGE AND STEAM OVEN SECTION AS PER FRENDL KITCHEN DRAWING	
Line 53436	Note:	
30Aug17 / 19Sep17		

CABINETRY ACCESSORIES

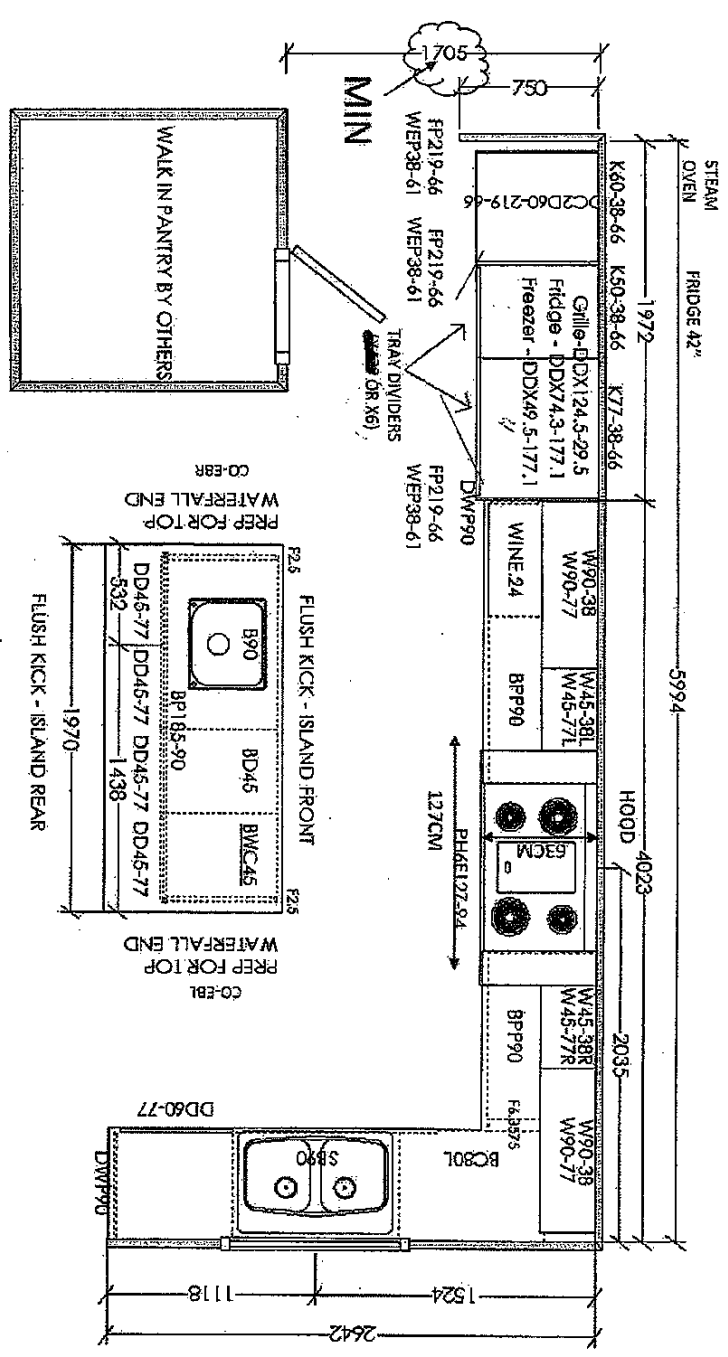
Inv.4177	* 4 - LOCATION: KITCHEN ISLAND	
	SUPPLY AND INSTALL FOUR (4) DUMMY DOORS TO FRONT SIDE OF ISLAND. THESE DOORS WERE MISSED IN THE DESCRIPTION TO THE ISLAND.	
Line 53414	Note: CAMDEN PAINT WINTER WHITE	
30Aug17 / 19Sep17		


7Jun17 / 11Aug17	
Inv.4139	
Line 53034	
7Jun17 / 11Aug17	

- STRACK HEIGHT – to work with site conditions: 77CM LOWERS – 36CM HIGH UPERS, to eliminate space above fridge – BULKHEAD ON SITE (224cm clearance to bulkhead)
- SUGGESTION TO UPGRADE TO ⁴¹FLIP-UP CABINETS OVER FRIDGE & STAM OVEN AREA FOR BETTER AESTHETICS WITH SELECTED APPLIANCES.
- RANGE HOOD PREMIER HOOD FAN MUST BE 66CM D
- HOOD FAN MILLWORK SUPPLIED AND INSTALLED, INSERT TO BE SUPPLIED AND INSTALLED BY OTHERS.
- MAGIC CORNER UPGRADE IN LIEU OF SLIDING BASKETS, LAYOUT DOES NOT HAVE ROOM TO ACCOMMODATE THE SLIDING BASKETS
- CONFIRM TRAY DIVIDER QTY (6 RECOMMENDED), 4 OVER FRIDGE, 2 OVER FREEZER
- TASC0 TO CONFIRM FRIDGE & FREEZER HINGES & LOCATION (FRENDEL LAYOUTS TO MODIFY ACCORDINGLY)

Doors: knob 151
Drawers: handles 12891

KITCHEN OPTION 2 -- NO SERVERY (SYMMETRICAL UPPER FLANKING HOOD)

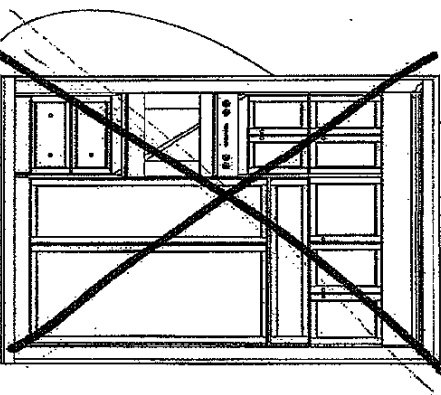


 <p>F R E N D E L K I T C H E N ' S L I M I T E D 1020 Devonshire Drive, Mississauga, ON L4V 1G3</p>	<p>SENATOR HOMES RICHVALE PHASE 2 MODEL: AVANTI 40-2 (1ST FLR) – LOT 4 UPG</p>	<p>STANDARD CONTRACT INCLUDES:</p> <p>Kitchen</p> <ul style="list-style-type: none"> - Canopy Hood 104 +/- cm wide opening - Deep fridge 95cm Wide - gables at exposed ends - Slide in range 92 wide opening - Soft close hinges - Elite collections receive soft close Tandem drawers - Pots and pan drawers (x2 sets) - 1 bank of 4 drawers - Crown moulding - Light valance - Backing on all cabinets (excluding sink base) - Countertop by others <p>Vanity</p> <ul style="list-style-type: none"> - Vanities - 80cm H - Vanities are 53.4cm Deep - Vanities include top drawers - Soft close hinges - Elite collections receive soft close Tandem drawers - Countertop by others
<p><small>THIS DRAWING IS FOR DESIGN PURPOSES ONLY. IT IS NOT AN EXACT REPRESENTATION.</small></p>		
<p><small>9/7/2017</small></p>		

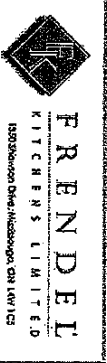
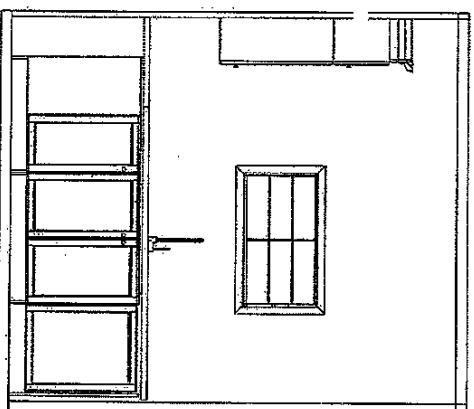
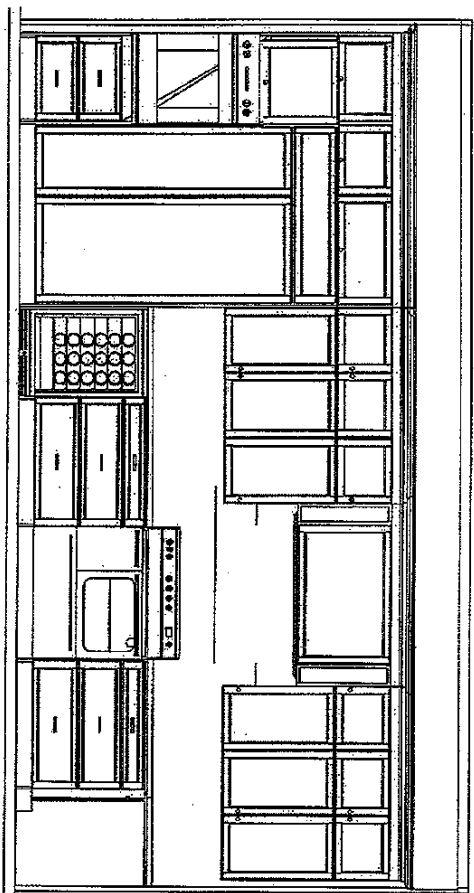
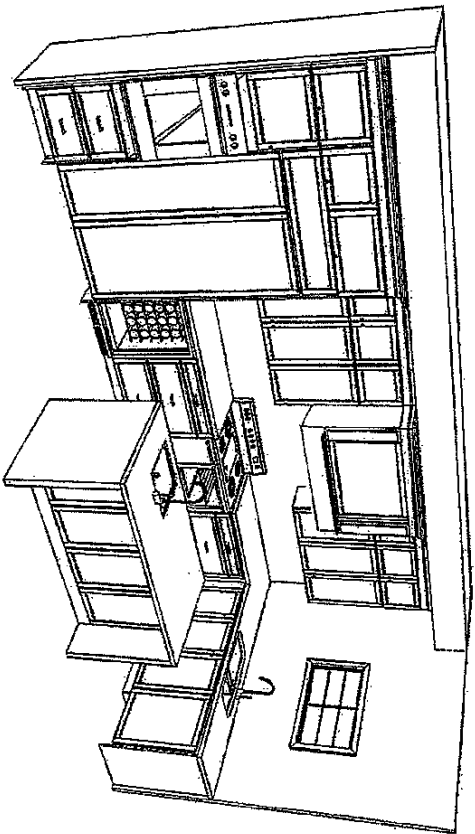
Ph #2-4.

FRIDGE/OVEN: STANDARD DOORS ABOVE

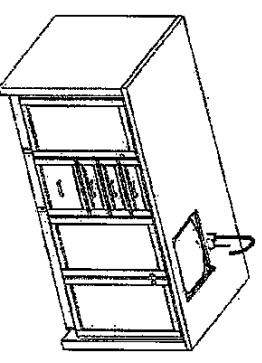
KITCHEN OPTION 2 - NO SERVERY (SYMMETRICAL UPpers FLANKING HOOD)



FRIDGE/OVEN: FLIP UP (X4)



SENATOR HOMES
RICHVALE PHASE 2
MODEL: AVANTI
40-2 (1ST FLR) - LOT 4 UPG

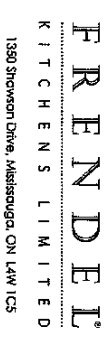
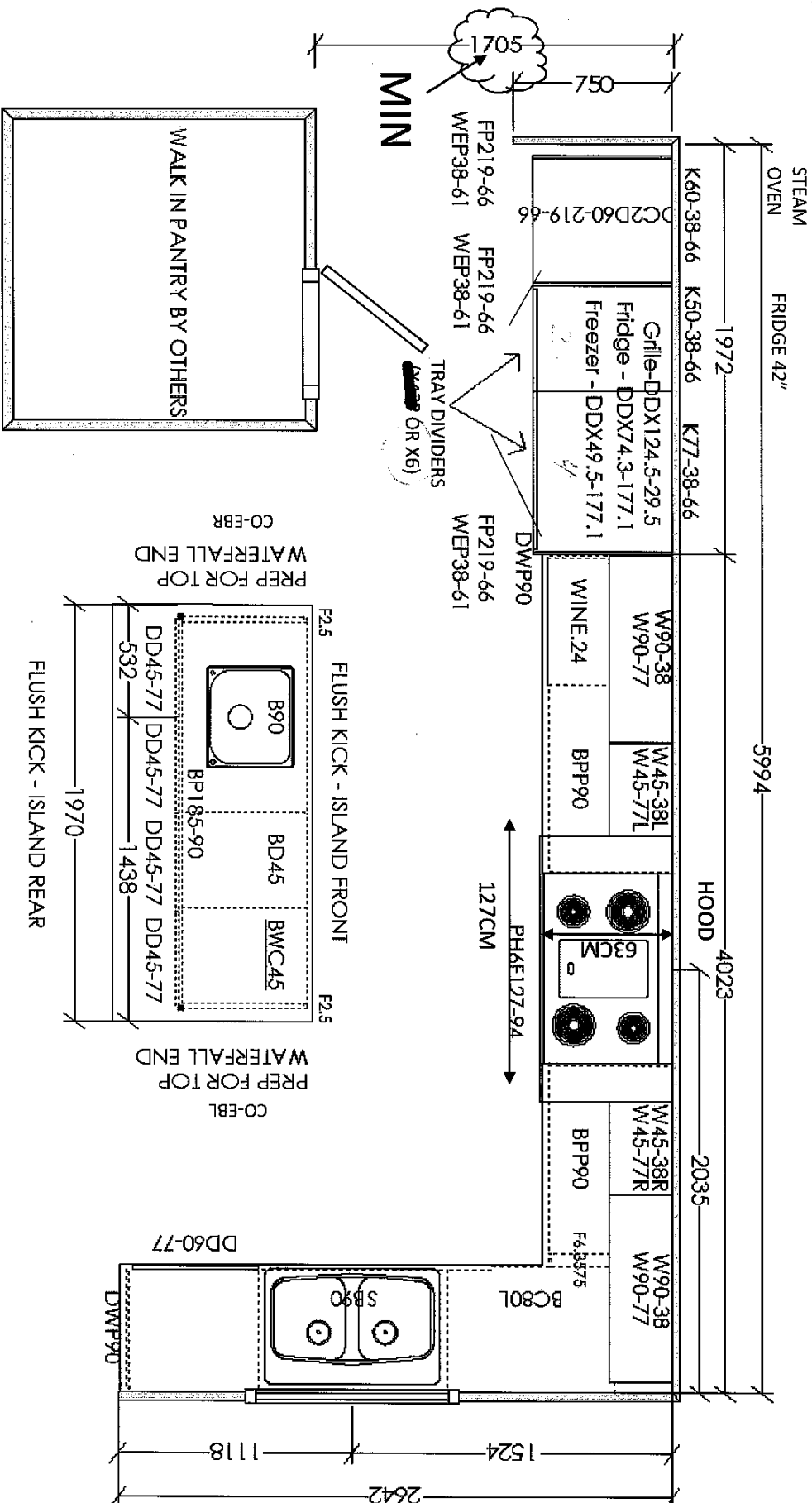


THIS DRAWING IS FOR DESIGN PURPOSES ONLY.
IT IS NOT AN EXACT REPRESENTATION.
9/7/2017

- STACK HEIGHT -- to work with site conditions: 77CM LOWERS -- 38CM HIGH UPBERS. to eliminate space above fridge -- BULKHEAD ON SITE (274cm clearance to bulkhead)
- SUGGESTION TO UPGRADE TO ⁴FLIP UP CABINETS OVER FRIDGE & SEAM OVEN AREA FOR BETTER AESTHETICS WITH SELECTED APPLIANCES.
- RANGE HOOD PREMIER HOOD FAN MUST BE 66CM D
- HOOD FAN MILLWORK SUPPLIED AND INSTALLED, INERT TO BE SUPPLIED AND INSTALLED BY OTHERS
- MAGIC CORNER UPGRADE IN LIEU OF SLIDING BASKETS, LAYOUT DOES NOT HAVE ROOM TO ACCOMMODATE THE SLIDING BASKETS
- CONFIRM TRAY DIVIDER QTY (6 RECOMMENDED, 4 OVER FRIDGE, 2 OVER FREEZER
- TASCO TO CONFIRM FRIDGE & FREEZER HINGES & LOCATION (FREDEL LAYOUTS TO MODIFY ACCORDINGLY)

Doors: Knob 151
Drawers: handles 12891

KITCHEN OPTION 2 – NO SERVERY (SYMMETRICAL UPPER FLANKING HOOD)



RICHVALE PHASE 2

40-2 (1ST FLR) - LOT 4 UPG

Kitchen

- # Vanity

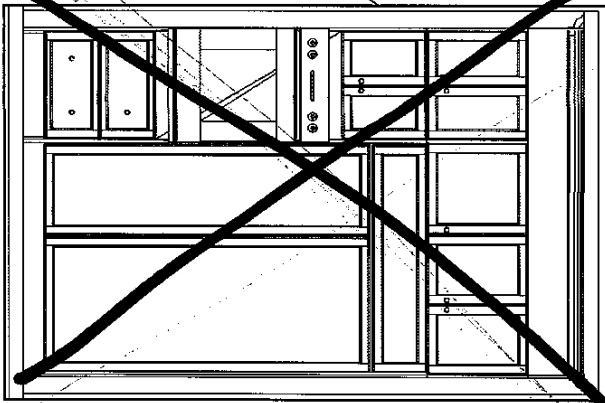
- THIS DRAWING IS FOR DESIGN PURPOSES ONLY.
IT IS NOT AN EXACT RENDITION.

9/7/2017

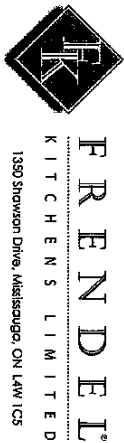
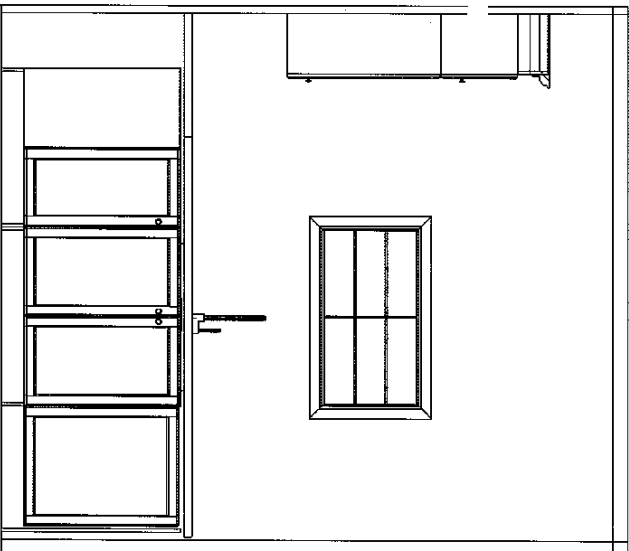
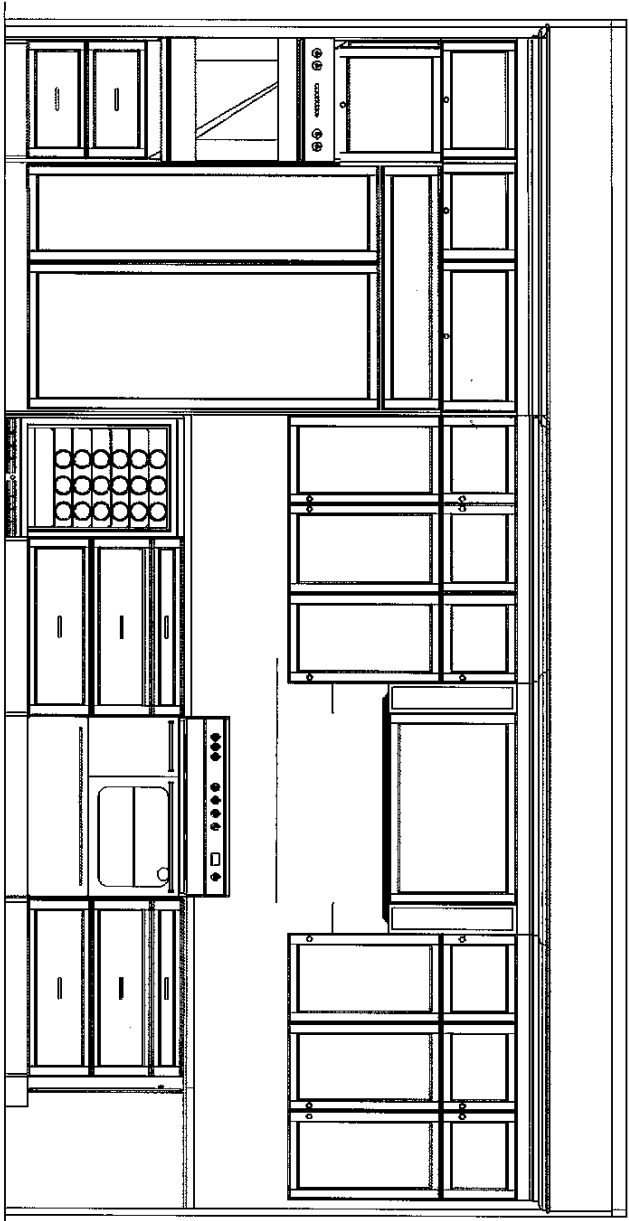
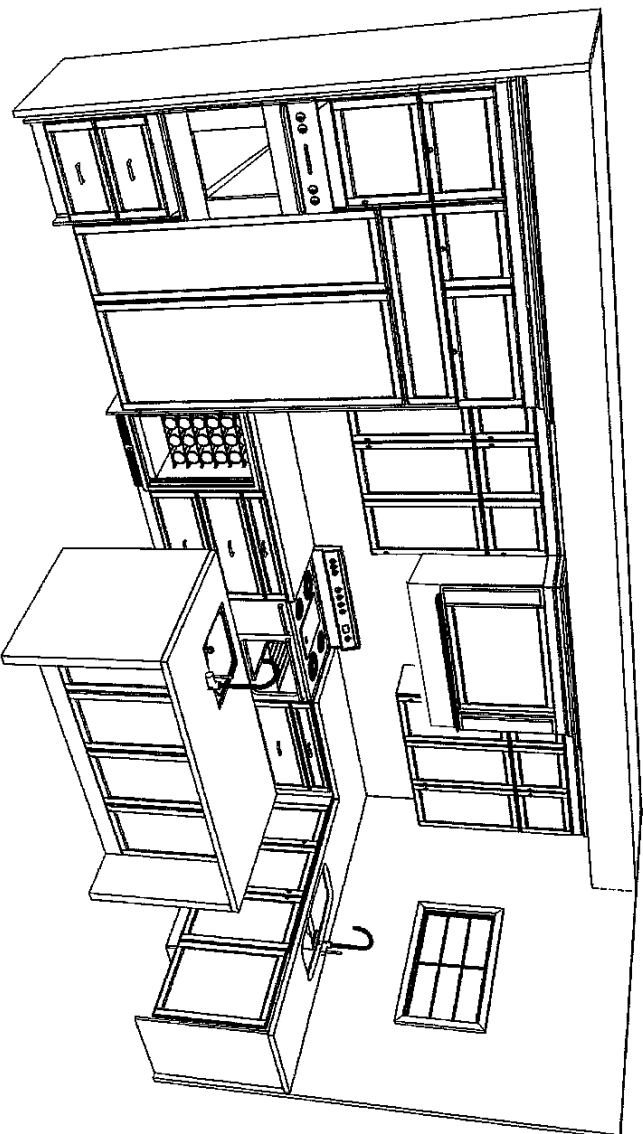
Ph#2-4.

KITCHEN OPTION 2 – NO SERVERY (SYMMETRICAL UPpers FLANKING HOOD)

FRIDGE/OVEN: STANDARD DOORS ABOVE

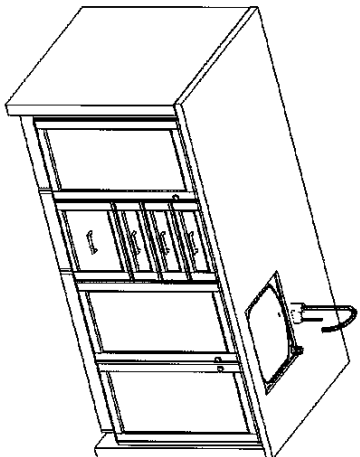


FRIDGE/OVEN: FLIP UP (X4)



F R E N D E L
KITCHENS LIMITED
1350 Shawson Drive, Mississauga, ON L4W 1C5

SENATOR HOMES
RICHVALE PHASE 2
MODEL: AVANTI
40-2 (1ST FLR) – LOT 4 UPG



THIS DRAWING IS FOR DESIGN PURPOSES ONLY.
IT IS NOT AN EXACT REPRESENTATION.
9/7/2017