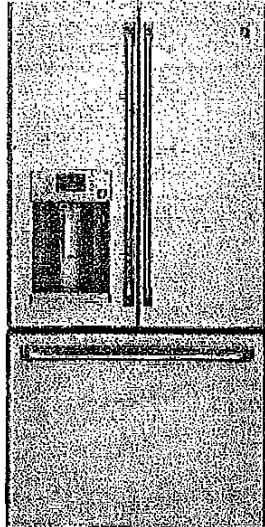


*Richvale phase 1
Lot 78*

ENERGY STAR® 22.1 Cu. Ft. Counter Depth French-Door Ice & Water Refrigerator

Model #: CYE22TSHSS



\$4,999

Approximate dimensions: 69 7/8 H x 35 3/4 W x
31 1/4 D (in.)

Total capacity: 22.1 cu. ft.

Weight: 398 lbs

Features

ENERGY STAR® Qualification

As an ENERGY STAR® partner, GE has determined that this item meets the ENERGY STAR® guidelines for energy efficiency

FrostGuard™ technology

In the freezer compartment, defrosting occurs only as needed therefore reducing freezer burn

GE Water Plus Filtration System - Delivers clean, great-tasting water and ice through the LightTouch! Dispenser with indicator light

Delivers, great-tasting water and ice through the LightTouch! Dispenser. Includes an indicator light that lets you know when the filter should be replaced

Hot Water Dispenser

Lets you choose your own temperature or from one of the 4 pre-programmed settings to simplify hot food and drink preparation.

Pharmaceutical Grade Water Filter*

GE's exclusive filtration system removes trace pharmaceuticals from water and ice. Tested and verified to filter five trace pharmaceuticals, including ibuprofen, progesterone and others* (*Contaminants or other substances removed or reduced by this water filter are not necessarily in all users water)

PreciseFill Technology

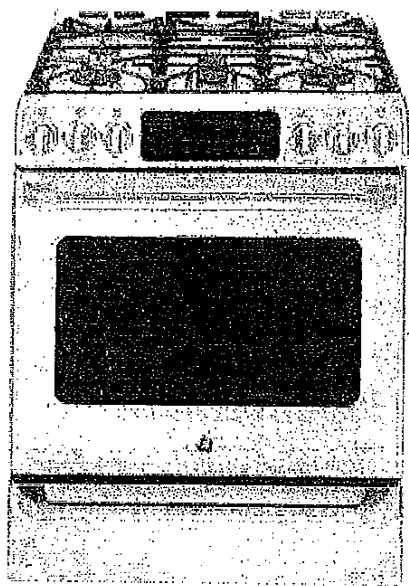
Delivers 'recipe perfect' amounts of filtered water.

QuickSpace Shelf

Slides out of the way to make room for tall items

APF Water Technology			
APF Ice Maker	SpaceSaving™ In-Door Design	APF Filter	Yes
APF Water Dispenser	External		
Appearance			
Rounded Corners	Yes	Door Swing	French Door
Counter-Depth Design	Yes	Cabinet Colour	Dark Gray
Door Handles	GE Café	Exterior Design	Contour Door
Leveling Legs	2 Front	Easy to Remove Door Gaskets	Yes
Capacity			
Total (cubic feet)	22.1	Fresh Food (cubic feet)	14.9
Freezer (cubic feet)	7.2		
Features			
Door Alarm	Yes	Dispenser Light	LED
External Ice and Water Dispenser	Large Stainless Steel	External Controls and Temperature Display	On Water Dispenser
Water Filter Indicator Light	Yes	FrostGuard™	Yes
Control type	External Touch Colour LCD	PreciseFill	Yes
Dispenser	Extra-Tall w/ Cubes,Crushed Ice & Chilled Water	External LCD Controls/Display on Dispenser	Yes
TwinChill™ Evaporators	Yes	Dispenser Functions	Water, Cubed Ice, Crushed Ice
Dispenser	Hot Water	Freezer Storage Baskets	2 full-width
Filter Location	Case - Upper Left	Fresh Food Drawers	2 Adjustable Humidity
Fresh Food Drawers	1 Full-Width, Adjustable Temperature	Water Filter	Removes Pharmaceuticals
Sabbath Mode	Yes	Dairy Compartment	Yes
Drop Down Tray	Yes	Interior display lighting	Showcase LED lighting (7)
Energy Star	Qualified	Fresh Food Door Shelves	4 Adjustable Bins with Gallon Storage
Fresh Food Door Shelves	6 Total	Interior display lighting	Showcase LED lighting (2)
Total Number of Shelves	4 Split Adjustable; 1 Full-Width	Spill Proof	3
QuickSpace™ Shelf	Yes		
Warranty			
Limited 1 Year	Entire Appliance; Parts/Labour; Carry-In		
Weights & Dimensions			
Approximate Shipping Weight (lbs.)	398	Height to Top of Case (in.)	69
Back (in.)	2	Top (in.)	1
Case Depth Without Door (in.)	24-3/8	Each Side (in.)	1/8
Overall Width (in.)	35-3/4	Overall Depth (in.)	31-1/4

30" Slide-In Dual-Fuel Convection Self-Cleaning Range with Baking Drawer
Model #: CC2S985SETSS



\$3,399

Approximate dimensions: 37 3/16 H x 30 W x 26 1/4 D (in.)
Weight: 245 lbs

Features

LowerOven

Adds additional 1.0 cu.ft of cooking capacity, therefore 6.0 cu. ft total baking capacity when combined with upper oven. It has upper and lower heating elements with a temperature range from 150° - 450° capability for warming and baking. Also provides additional storage when not in use. Easy-to-clean removable drawer liner is included.

Super-Large 5.0 cu ft Oven Capacity

Provides an impressively large oven interior for cooking more dishes and large meals at once. Ideal for holidays, dinner parties and everyday family cooking.

Non-Stick Griddle

Offers a flat cooking surface, placed over the center oval burner, for cooking multiple foods at once. Provides uniform heat distribution from front to back of griddle.

Accessories

LP Conversion Kit	Included	Optional Backguard	JXS80SS (5")
-------------------	----------	--------------------	--------------

Appearance

Oven Door with Window	Big ClearView™	Colour Appearance	Stainless Steel
Designer-Style Control Knobs	Professional-Style	4 Levelling Legs	Yes
Control Location	Front Center	Knob Colour	Stainless Steel Appearance
Frameless Oven Door	Stainless Steel	Drawer Handle	GE Cafe Stainless Steel
Oven Door Handle	GE Cafe Stainless	Textured Steel Side Panels	Black

Capacity

Super-Large Oven	Yes	Total Oven Capacity	6.4
Upper Oven Capacity	5.4	Lower Oven Capacity	1.0

Features

Cooktop Burners	5 Sealed Burners	High Output Burner	Yes
Auto Self-Clean	Yes	Hi / Low Broil	Yes
Ignition System	Electronic	In - Oven Broiling	Yes
Valves (Degree of Turn)	270	Burner Grate Type / Style	Two doubles continuous heavy cast with center grate
Continuous Burner Grate Surface	Yes	Automatic Oven Timer (Time Bake)	Yes
All-Purpose Burners	(1) 9100 BTU - 150° Simmer	Precise Simmer Burner	(1) 5000 BTU - 140° Simmer
QuickSet Controls	QuickSet VI Glass Touch Controls	TrueTemp™ System	Yes
Oven Racks	3 Heavy Duty, Self-Clean	Embossed Rack Positions	6 Positions
Cooktop	Deep-recessed Stainless Steel	Cooktop Grate/Burner Cap Colour	Matte (Dull) Black
Digipad	Yes	Dishwasher Safe Knobs	Yes
Auto Oven Shut-Off	With Override	Delay Self-Clean	Yes
Non-Stick Griddle	Included	Center Oval Burner	(1) 8000 BTU
Audible Preheat Signal	Yes	Convection Bake	Yes
Convection Roast	Yes	Variable Cleaning Time	w/Delay Clean Option
Power Boil™ Burner	(1) 17,000 BTU - 160° Simmer	Electronic Clock & Timer	Yes
Certified Sabbath Mode	Yes	Control Lock Capability	Yes
Delay Bake Option (Time Bake)	Yes	Oven Type / Cleaning	Convection Self-Clean
Automatic Meat Thermometer (Probe)	Yes	Range Lockout	Yes
Convection Conversion	Yes	Electronic Oven Control	Yes
Infinite Baking Drawer Control	Yes	Removable Baking Drawer Liner	Included
Automatic Self-Clean Oven Door Lock	Yes	Self-Clean Cool Down Time Display	Yes
Self-clean Grates	Yes	Auto Recipe™ Conversion	Yes
Lower Oven Control	Single Knob	Oven Meat Probe	Yes
Fuel Type	Dual-Fuel	4 Pass Bake Element	2585 watt
4 Pass Broil Element	3410 watt	Oven Interior Light	2
Oven Temperature Display	Digital	Lower Baking Oven	Dual Bake Element (150° - 450°)
Tri-Ring Burner	(1) 20,000 BTU - 140° Simmer		
Power & Ratings			
Volts; Hertz; Amps	240v/208v, 60Hz/40A	Volts; Hertz; Amps	208/240V; 60Hz; 40A
LP Gas	(1) 11 (1) 15 (1) 5.0 (1) 9.1 (1) 8.0	Baking Drawer	Broil: 6 Pass 800 W / Bake: 6 Pass 412 W
Natural Gas	(1) 17 (1) 20 (1) 5.0 (1) 9.1 (1) 8.0		

Warranty

Limited 1-year

Entire Appliance; In Home;
Parts & Labour

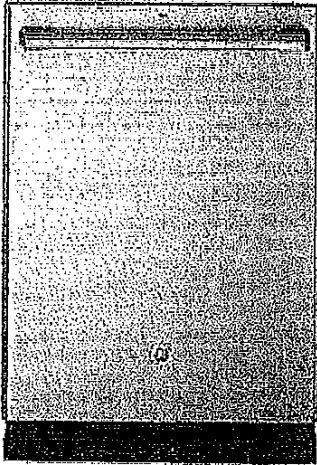
Weights & Dimensions

Overall Width (in.)	30	Overall Height (in.)	37-3/16
Height to Cooking Surface (in.)	36 1/4 +/-1/4	Overall Depth (in.)	26 1/4
Approximate Shipping Weight (lbs.)	245	Depth With Oven Door Open 90 Degrees (in.)	46-3/4
Overall Depth including Handle (in.)	28-3/8	Interior Dimensions - Lower Oven (w x h x d) (in.)	20-3/4 x 4-3/4 x 16
Cabinet Width Required (in.)	30	Overall Depth (excluding handle)	26-1/2
Interior Dimensions - Upper Oven (w x h x d) (in.)	24 x 17-1/2 x 20		

21.

Built-In Tall Tub Dishwasher with Hidden Controls

Model #: CDT865SSJSS



\$2,099

Approximate dimensions: 33 3/8 H x 23 3/4 W x 24 D (in.)

Weight: 100 lbs

Features

Energy Star Certified

Energy Star - Certified to exceed Energy Star® guidelines for energy efficiency

Piranha Hard Food Disposer with Removable Filter

To ensure consistently clean items, this stainless steel blade rotates at 3,600 RPM to pulverize food particles and helps to prevent large particles from clogging the wash arms

3-Digit Countdown Display with 1-12-hour Delay Start

Wash dishes at your convenience

Reversing Quad Blade Wash Arm

Dishes come out impressively clean thanks to this revolutionary lower wash arm, with 25 spray jets reversing direction to hit items from every angle.

Bottle Wash Jets

Hard-to-reach areas inside tall items get completely clean with four specialty tines with dedicated jets integrated into the upper rack that shower water deep inside for the ultimate clean.

Deep Clean Silverware Jets

No matter how you load your silverware basket, powerful jets blast away stuck-on food for silverware that's always spotless

Wash System Advanced Wash System 140+ Cleaning Jets

Expect the ultimate clean from an industry-leading number of jets that deliver complete wash coverage to every corner of the dishwasher.

Appearance

Colour Appearance

Stainless Steel

Door Style

Full-Length Flat Door

Cycles

AutoSense	Yes	eWash	Yes
Heavy Wash	Yes	Light Wash	Yes
Rinse Only	Yes	Express Wash	Yes
Normal Wash	Yes		

DryIndex

Fan-Assist Dry	Yes
----------------	-----

Economical / Quiet

Sound Insulation Package	40 dBA	Energy Star Qualified	Yes
--------------------------	--------	-----------------------	-----

Features

Floor Protect	Yes	Place Settings	16
Audible End-of-Cycle Signal	Yes	Countdown display	Yes - 3-digits
Cycle Progress Indicators (on control)	1 "Clean" Light, 1 "Sanitized" Light	Cycle Progress Indicators (on door)	Bi-color LED (Washing-amber, Clean-green)
Control Type	Fully Integrated Electronic	Last Cycle Memory	Yes
Cycles / Options	4 / 11	Tub & Door Liner	Stainless Steel
Rinse Aid Dispenser	With Indicator and Adjustment	Latch / Door Handle	New GE Café Stainless

Options

Delay Start	1-12 hr.	Half Load	Single Rack wash option (Lower)
Presoak	Yes	Child Lock	Yes
Start / Cancel / Reset Pad	Yes	Temp Boost	Yes
Bottle Wash Jets	Yes	Heated Dry	Yes

Power & Ratings

Calrod Heater Watts	Multi-wattage	Electrical Requirements	120 V; 60 Hz; 9.9 A
Calrod Heater Watts	Hidden Heater		

Racking

Racking System	Nylon	Lower Rack	Removable and Reversible
Fold Down Tines	2 Upper Rack & 2 Lower Rack	Rack Colour	Black Pearl
Utility Shelf	2 plastic w/StemSafe, chopstick slots	Upper Rack - Removable	Yes
Adjustable 3rd rack	2 Removable Pieces	Upper Rack - Adjustable	2 Positions
Primary Silverware Basket	3 piece with Soft Touch handle		

Warranty

Parts Warranty	Limited 1-year entire appliance	Labour Warranty	Limited 1-year entire appliance
----------------	---------------------------------	-----------------	---------------------------------

Wash System

Sensor	CleanSensor	Wash System	Advanced Wash System 140+ Cleaning Jets
Wash Levels	6	Wash Arms	3 - Direct Feed
Wash Arm - Mid-Level	Reversing Quad Blade	Wash Arm - Lower Level	Reversing Quad Blade
Water Filtration	100% 3-stage with removable filter	Wash Arm - Upper Level	Yes

Hard Food Disposer Piranha

Weights & Dimensions

Overall Height with Legs Extended (in.)	34-5/8	Overall Height (in.)	33-3/8
Approx. Shipping Weight (lbs.)	100	Overall Depth (in.)	24
Overall Width (in.)	23-3/4		

Select Country

HOME COMPANY PRODUCTS TECHNOLOGY DISTRIBUTORS SUPPORT COMMUNICATION NEWS CONTACT US

Home > Products > COLLECTIONS > Potenza > Mercurio

MERCURIO Potenza

COLLECTIONS

- Silence - NRS
- Design+
- Mirabilia
- Fasteel
- Design
- Insert
- Potenza
 - Mercurio
 - Afrodit
 - Artemide
 - Salurno
 - Vulcano
 - Eros
 - Professional
 - Professional

TYPES OF INSTALLATION

ALPHABETIC

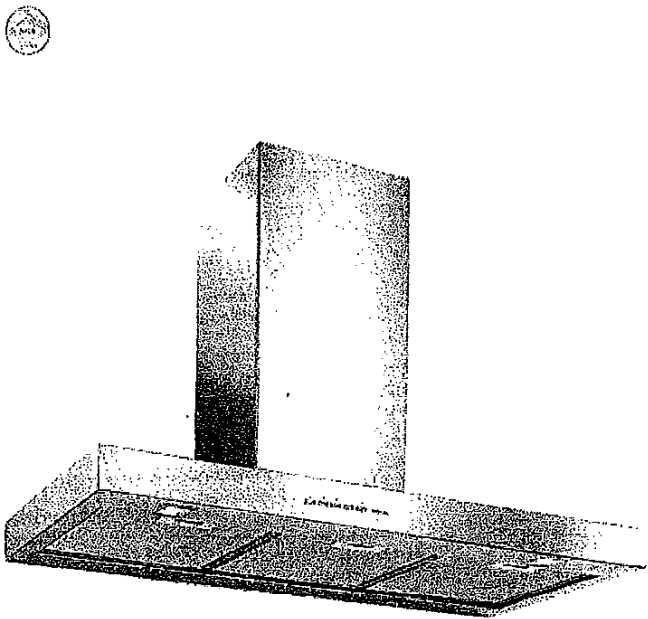
SEE ALL

PRODUCT SEARCH

GALLERY

CATALOGUES

ACCESSORIES



INSTRUCTION BOOKLET

DESCRIPTION

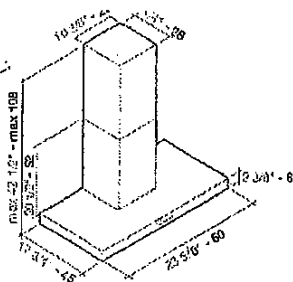
The Mercurio embodies the classic characteristics of Italian design. It is still a favoured design of premium kitchen companies around the world.

AVAILABLE VERSIONS

- Mercurio Wall 24" 280 CFM
- Mercurio Wall 30" 280 CFM
- Mercurio Wall 36" 280 CFM
- Mercurio Island 36" 280 CFM
- Mercurio XL Wall 30" 600 CFM
- Mercurio XL Wall 36" 600 CFM
- Mercurio XL Wall 42" 600 CFM
- Mercurio XL Island 36" 600 CFM
- Mercurio XL Island 42" 600 CFM

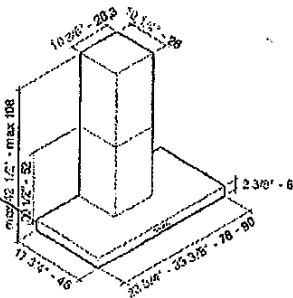
WALL 24" - 60 CM

FPMER24W3SS
Motor and control
280 CFM, 3 speed Electronic controls
Filters
"Metallic"
Lighting
Halogen 2x20 W
Duct specification
4 3/4" - 12 cm



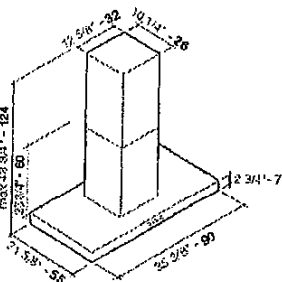
WALL 30" - 76 CM / 36" - 90 CM

FPMER30W3SS / FPMER36W3SS
Motor and control
280 CFM, 3 speed Electronic controls
Filters
"Metallic"
Lighting
Halogen 2x20 W
Duct specification
4 3/4" - 12 cm



ISLAND 36" - 90 CM

FPMER36I3SS
Motor and control
280 CFM, 3 speed Electronic controls
Filters
"Metallic"
Lighting
Halogen 2x20 W
Duct specification
4 3/4" - 12 cm

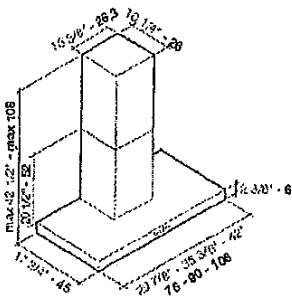


WALL 30" - 76 CM / 36" - 90 CM / 42" - 106 CM

MERCURIO XL

FPMEX30W6SS / FPMEX36W6SS / FPMEX42W6SS

Motor and control
600 CFM, 4 speed Electronic controls
Filters
"Metallic"
Lighting
Halogen 2x20 W
Duct specification
6" - 15 cm



Angie Lovetere

From: Farzad Rabiei <farzadj@gmail.com>
Sent: Thursday, November 10, 2016 2:00 PM
To: Steffannee Appio
Cc: Angie Lovetere; Farnoosh Alizadeh
Subject: Re: LOT 78 - REQUEST TO SCHEDULE DESIGN APPOINTMENT
Attachments: Richvale phase 1 - Lot 78 Appliances.pdf

Dear Steffannee,

Please find attached the list and spec of upgraded appliances we purchased from the Brick for the Richvale, Phase 1 - Lot 78.

Please review and advise if you see anything that doesn't match the modifications we purchased from Senator's Decor Center.

Regards,
Farzad Rabiei
416-985-5121

On Sat, Sep 17, 2016 at 9:53 AM, Steffannee Appio <sappio@senatorhomes.com> wrote:

Good morning Farzad,

Thank you kindly for sending the signed documents.

In regards to the hood fan – the standard opening is 6" and yes there is an electrical outlet.

steffannee

From: Farzad Rabiei [mailto:farzadi@gmail.com]
Sent: Friday, September 16, 2016 3:55 PM
To: Steffannee Appio <sappio@senatorhomes.com>
Cc: Angie Lovetere <alovetere@senatorhomes.com>

Subject: Re: LOT 78 - REQUEST TO SCHEDULE DESIGN APPOINTMENT

Dear Steffanee,

Thank you very much. Please find attached the signed papers.

Therefore, I understand that we do not need to delete anything else.

One question. can we accommodate 3" chimney hood fan as we have the power outlet for it?

Regards,

Farzad

On Fri, Sep 16, 2016 at 1:43 PM, Steffanee Appio <sappio@senatorhomes.com> wrote:

Hello Farzad,

As promised, please find attached the revised document which shows the deletion of the 36" stove and hood fan opening.

Your credit card receipt for the difference in charge is attached.

Please sign, initial and date the attached documents and email back to me.

Thanks

steffanee