



CONSTRUCTION SUMMARY

Teefy Developments Limited / 9130 Bathurst

Lot/Unit: 57    Phase/Building: 1    Model/Floor Plan: Bedford(22-2)

CABINETRY

Inv.3512	1 - SUPPLY AND INSTALL CABINETRY - KITCHEN - UPGRADE - 8 - ROYAL I - SUPPLY AND INSTALL - ANNEX SERIES	
Line 46231	Note:	
16Feb16 / 3Mar16		

CABINETRY ACCESSORIES

Inv.3512	1 - SUPPLY AND INSTALL KITCHEN FASCIA CEILING PANELS FOR CROWN MOULDING. (PRICE INCLUDES STANDARD CROWN MOULDING)	
Line 46239	Note:	
16Feb16 / 3Mar16		
Inv.3512	3 - SUPPLY AND INSTALL LIGHT VALANCE (ANNEX SERIES)	
Line 46238	Note:	
16Feb16 / 3Mar16		

CABINETRY APPLIANCE - FRIDGE

Inv.3512	1 - SUPPLY AND INSTALL KITCHEN 66 CM FRIDGE CABINET - 1 GABLE 66 CM & CABINET 59 CM DEEP - COUNTER DEPTH - UPGRADE 2	
Line 46285	Note:	
16Feb16 / 3Mar16		

CABINETRY BASE CABINETS

Inv.3512	1 - SUPPLY AND INSTALL KITCHEN BASE PIE CUT CORNER - UPGRADE 2	
Line 46242	Note: LOCATION AS PER SKETCH ATTACHED	
16Feb16 / 3Mar16		
Inv.3512	1 - SUPPLY AND INSTALL KITCHEN CABINET - FUTURE MICROWAVE APPLIANCE WITH TRIM KIT UNDER COUNTER IN BASE CABINET WITH DRAWER BELOW IN LIEU OF EXISTING BASE CABINET - PURCHASER MUST SUPPLY SPECS - ANNEX SERIES	
Line 46243	Note:	
16Feb16 / 3Mar16		

CABINETRY HARDWARE

Inv.3512	1 - SUPPLY AND INSTALL KITCHEN - CABINET HARDWARE - UPGRADE 2 - DISPLAY BOARD	
Line 46259	Note:	
16Feb16 / 3Mar16		

CABINETRY

Inv.3512	1 - SUPPLY AND INSTALL ACCOMMODATION FOR FUTURE CHIMNEY STYLE HOOD FAN - PURCHASER MUST SUPPLY SPECS	
Line 46245	Note: <div>delete standard stove upper cabinet &amp; provide 2 finished gables</div>	
16Feb16 / 3Mar16		

CABINETRY VANITY

Inv.3512	1 - SUPPLY AND INSTALL VANITY BANK OF DRAWERS - 55 CM MAXIMUM - UPGRADE 1 TO THE MASTER ENSUITE	
Line 46504	Note:	
16Feb16 / 3Mar16		



CONSTRUCTION SUMMARY

Teefy Developments Limited / 9130 Bathurst

Lot/Unit: 57    Phase/Building: 1    Model/Floor Plan: Bedford(22-2)

Inv.3512	2 - SUPPLY AND INSTALL VANITY TOP DRAWER PRICE PER DRAWER - INCLUDE FALSE DRAWERS - UPGRADE 1 TO THE MAIN BATH	
Line 46506	Note:	
16Feb16 / 3Mar16		

COUNTER TOP - VANITY

Inv.3512	1 - SUPPLY AND INSTALL 2CM STONE COUNTEROP WITH STANDARD SQUARE EDGE – GROUP 2 IN THE ENSUITE - BATHROOM	
Line 46501	Note:	
16Feb16 / 3Mar16		

ELECTRICAL

Inv.3512	1 - SUPPLY AND INSTALL ADDITIONAL ELECTRICAL - SHOWER POT LIGHT - LOCATION SKETCH ATTACHED	
Line 46264	Note: FOR A TOTAL OF TWO SHOWER LIGHTS ON EITHER SIDE OF THE RAIN HEAD (PURCHASED SEPARATELY)	
16Feb16 / 3Mar16		
Inv.3512	1 - SUPPLY AND INSTALL ADDITIONAL INTERIOR RECEPTACLE ON SEPARATE CIRCUIT FOR FUTURE BUILT IN MICROWAVE IN THE KITCHEN	
Line 46244	Note: LOCATION AS PER SKETCH ATTACHED. <div>below base cabinet - 120V / 20 AMP - see kitchen layout</div>	
16Feb16 / 3Mar16		
Inv.3512	1 - SUPPLY AND INSTALL ADDITIONAL INTERIOR RECEPTACLE (NOT SEPARATE CIRCUIT) IN THE FAMILY ROOM APPROXIMATELY 66" +/- FROM THE FLOOR	
Line 46258	Note: LOCATION AS PER SKETCH ATTACHED.	
16Feb16 / 3Mar16		
Inv.3512	2 - SUPPLY AND INSTALL CAPPED CEILING LIGHT ROUGH-IN ONLY ON SEPARATE SINGLE SWITCH OVER THE: - BREAKFAST BAR - ENSUITE TUB	
Line 46263	Note: LOCATION AS PER SKETCH ATTACHED.	
16Feb16 / 3Mar16		
Inv.3512	1 - SUPPLY AND INSTALL KITCHEN LIGHT VALANCE ROUGH IN (INCLUDES 1 SWITCH)	
Line 46482	Note: LOCATION AS PER SKETCH ATTACHED.	
16Feb16 / 3Mar16		

HARDWOOD

Inv.3512	1 - SUPPLY AND INSTALL HARDWOOD - VINTAGE - SOLID SAWN - WHITE OAK 5 INCH X 3/4 INCH - HAND - - GREAT ROOM	
Line 46246	Note:	
16Feb16 / 3Mar16		
Inv.3512	1 - SUPPLY AND INSTALL HARDWOOD - VINTAGE - SOLID SAWN - WHITE OAK 5 INCH X 3/4 INCH - HAND - - DINING ROOM	
Line 46247	Note:	
16Feb16 / 3Mar16		
Inv.3512	1 - SUPPLY AND INSTALL HARDWOOD - VINTAGE - SOLID SAWN - WHITE OAK 5 INCH X 3/4 INCH - HAND - - KITCHEN	
Line 46248	Note:	
16Feb16 / 3Mar16		



CONSTRUCTION SUMMARY

Teefy Developments Limited / 9130 Bathurst

Lot/Unit: 57    Phase/Building: 1    Model/Floor Plan: Bedford(22-2)

Inv.3512	1 - SUPPLY AND INSTALL HARDWOOD - VINTAGE - SOLID SAWN - WHITE OAK 5 INCH X 3/4 INCH - HAND - - LANDING 1ST TO 2ND	
Line 46249	Note:	
16Feb16 / 3Mar16		
Inv.3512	1 - SUPPLY AND INSTALL HARDWOOD - VINTAGE - SOLID SAWN - WHITE OAK 5 INCH X 3/4 INCH - HAND - - UPPER HALL	
Line 46250	Note:	
16Feb16 / 3Mar16		
Inv.3512	1 - SUPPLY AND INSTALL HARDWOOD - VINTAGE - SOLID SAWN - WHITE OAK 5 INCH X 3/4 INCH - HAND - - BREAKFAST	
Line 46297	Note:	
16Feb16 / 3Mar16		

HEATING AND AIR CONDITIONING

Inv.3512	1 - SUPPLY AND INSTALL GAS LINE - ROUGH-IN ONLY - FOR STOVE TO INCLUDE 110V CODE REQUIREMENT	
Line 46483	Note: LOCATION AS PER SKETCH ATTACHED	
16Feb16 / 3Mar16		
Inv.3512	1 - SUPPLY AND INSTALL GAS LINE - ROUGH-IN ONLY - FIRST CONNECTION- FOR BBQ	
Line 46484	Note: LOCATION AS PER SKETCH ATTACHED	
16Feb16 / 3Mar16		

MISCELLANEOUS

Inv.3512	1 - SUPPLY AND INSTALL EMPTY CONDUIT TO THE FAMILY ROOM. TERMINATION POINT A TO BE APPROXIMATELY 66" +/- FROM FLOOR AND TERMINATION POINT B TO BE BELOW AND AT APPROXIMATELY 17" +/- FROM FLOOR.	
Line 46257	Note:	
16Feb16 / 3Mar16		

PLUMBING

Inv.3512	1 - SUPPLY AND INSTALL ADDITION OF DIVERTER VALVE ALLOWS 2 FUNCTIONS IN THE MASTER ENSUITE: 1) HAND SHOWER BAR AND 2) CEILING RAIN HEAD WITH DELETION OF THE TOE TESTER DIVERTER IN LIEU OF STANDARD	
Line 46262	Note: AS PER SKETCH ATTACHED	
16Feb16 / 3Mar16		
Inv.3512	2 - SUPPLY AND INSTALL AMERICAN STANDARD LOFT COUNTER VESSEL SINK MODEL 0552.001 TO THE MASTER ENSUITE	
Line 46502	Note:	
16Feb16 / 3Mar16		

TILE - FLOOR



CONSTRUCTION SUMMARY

Teefy Developments Limited / 9130 Bathurst

Lot/Unit: 57    Phase/Building: 1    Model/Floor Plan: Bedford(22-2)

Inv.3512	1 - SUPPLY AND INSTALL FLOOR TILE - UPGRADE 8 - - POWDER ROOM FLOOR	
Line 46252	Note:	
16Feb16 / 3Mar16		
Inv.3512	1 - SUPPLY AND INSTALL FLOOR TILE - UPGRADE 8 - - VESTIBULE FLOOR	
Line 46251	Note:	
16Feb16 / 3Mar16		
Inv.3512	1 - SUPPLY AND INSTALL FLOOR TILE - UPGRADE 8 - - MAIN BATH FLOOR	
Line 46253	Note:	
16Feb16 / 3Mar16		
Inv.3512	1 - SUPPLY AND INSTALL FLOOR TILE - UPGRADE 8 - - BASEMENT BATH FLOOR	
Line 46254	Note:	
16Feb16 / 3Mar16		
Inv.3512	1 - SUPPLY AND INSTALL FLOOR TILE - UPGRADE 8 - - ENSUITE BATHROOM FLOOR	
Line 46255	Note:	
16Feb16 / 3Mar16		
Inv.3512	1 - SUPPLY AND INSTALL FLOOR TILE TO THE ENSUITE SHOWER WALL - UPGRADE 6	
Line 46260	Note: HORIZONTAL STACKED INSTALL	
16Feb16 / 3Mar16		
Inv.3512	1 - SUPPLY AND INSTALL FLOOR TILE - UPGRADE 1 - - ENSUITE BATH SHOWER FLOOR	
Line 46261	Note:	
16Feb16 / 3Mar16		

EXTRAS AS PER OFFER

Stainless Steel Fridge, Stove and Dishwasher and front loading washer and dryer in white from Vendors standard samples, no cash value, not transferable. (Supplied only not installed) ** to - arrange delivery call: The Brick commercial sales division at Worksheet Note:	
Rogers Free Services Package includes 6 months of: home phone, TV and Internet Service. Worksheet Note:	

T-57

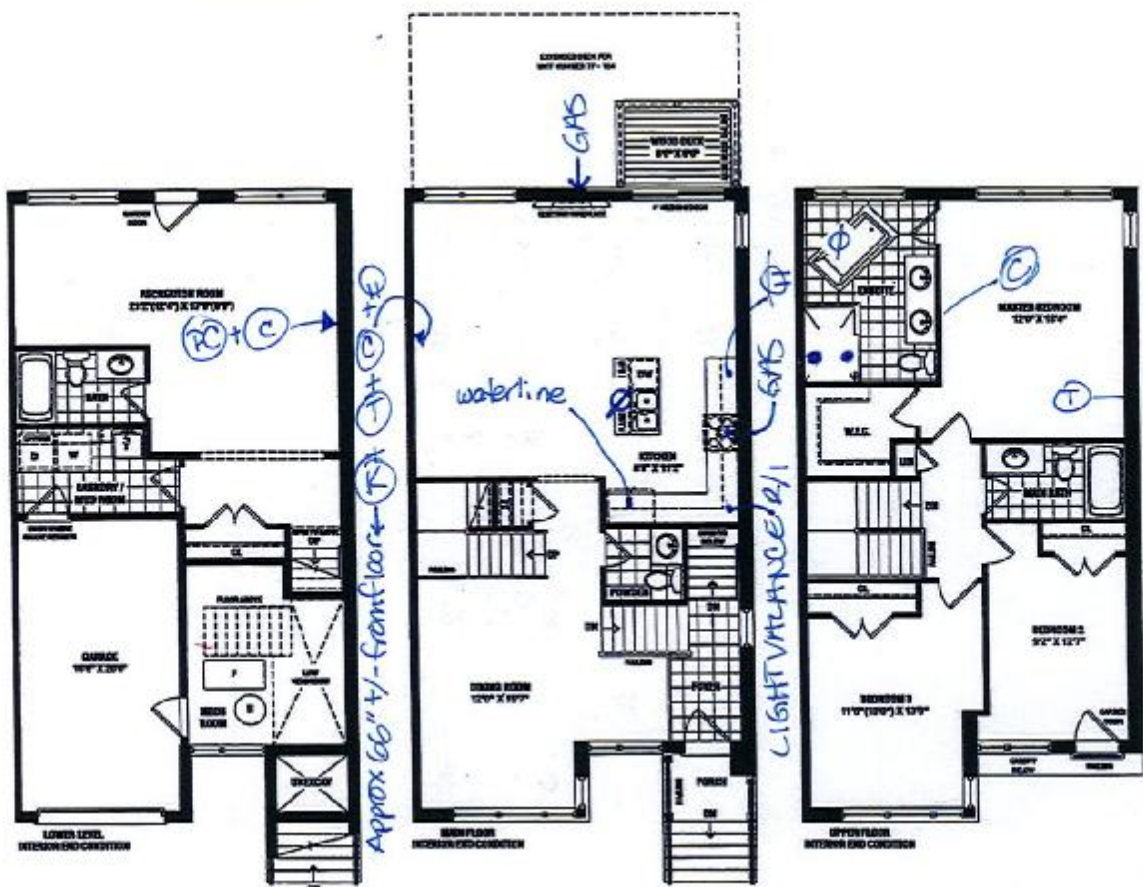
**SENATOR HOMES**  
DECOR CENTRE

DATE: MAR 03 2016

INITIALS: A-G

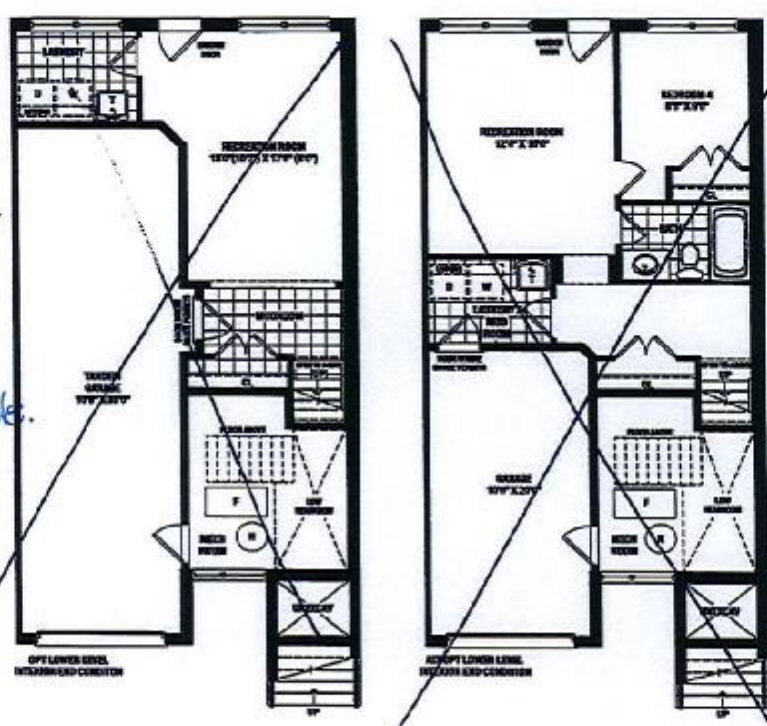
# BEDFORD<sub>END</sub>

2420 SQ.FT. / 2251 SQ.FT. WITH OPTIONAL TANDEM GARAGE



- (T) = telephone
- (C) = cable
- (PC) = computer outlet
- (K) = copper ceiling r/i

- (K) = conduit
- (P) = electrical receptacle
- = shower pot lights



A.G.

**SENATOR**  
HOMES

Renderings are artist's concept. Some elevations may vary from that shown. Actual usable square footage may vary from that stated herein. Some floorplans and elevations are mirror image to that shown. E&O.E. 22/2



# BEDFORD - TH-22-2

## STD. LAYOUT

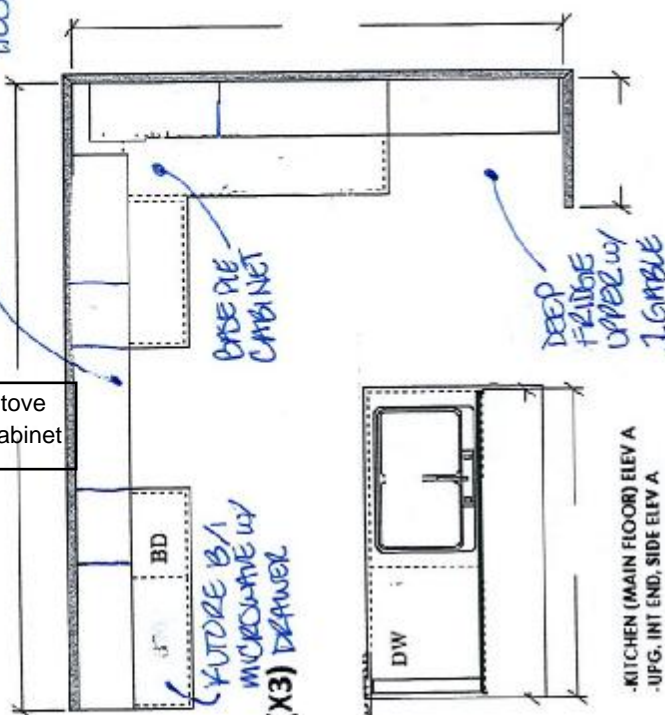
SENATOR HOMES - TEEFY

- \* LIGHT VALANCE
- \* FASCIA + CROWN

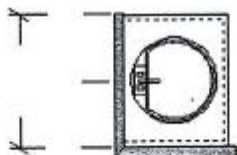
FUTURE CHINESE STYLE HOOD FAN

delete stove upper cabinet

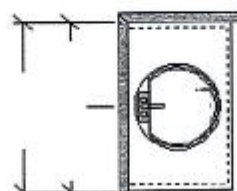
OPT. CROWN (X3)  
OPT. LIGHT VALANCE (X3) DRAWER



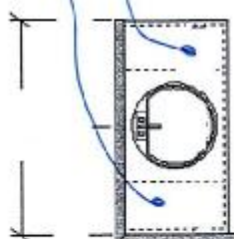
-POWDER (MAIN FLOOR) ELEV A  
-UPG. INT END. SIDE ELEV A



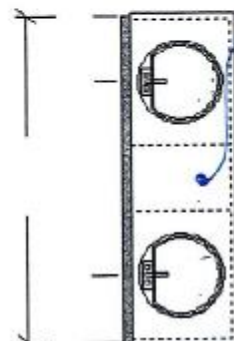
-OPT. BATH (OPT. LOWER LEVEL) ELEV A  
-OPT. UPG INT END. SIDE ELEV A



TOP DRAWERS

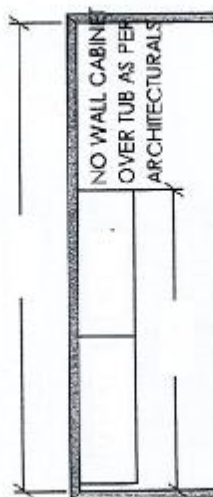


-MAIN BATH (UPPER FLOOR) ELEV A  
-UPG. INT END. SIDE ELEV A



-ENSUITE (UPPER FLOOR) ELEV A  
-UPG. INT END. SIDE ELEV A

## OPTIONAL CABINETRY (STANDARD ELEVATION)



-OPT. LAUNDRY UPPERS (LOWER LEVEL)  
-UPG INT END. SIDE UPG ELEV A  
-OPT. LAUNDRY UPPERS (ALT. LOWER LEVEL)  
-OPT. ALT. INT END. SIDE ELEVATION

[BASE CABINETRY NOT REFLECTED ON DWG'S]

\*\*\*NO OPT LAUNDRY UPPERS\*\*\*  
(INC. STACKED UNIT)  
\*\*\*NO OPT. LOWER LEVEL VANITY\*\*\*

BANK OF DRAWERS

## Shower Packages

### Option 3

Addition of Diverter Valve allows 2 functions

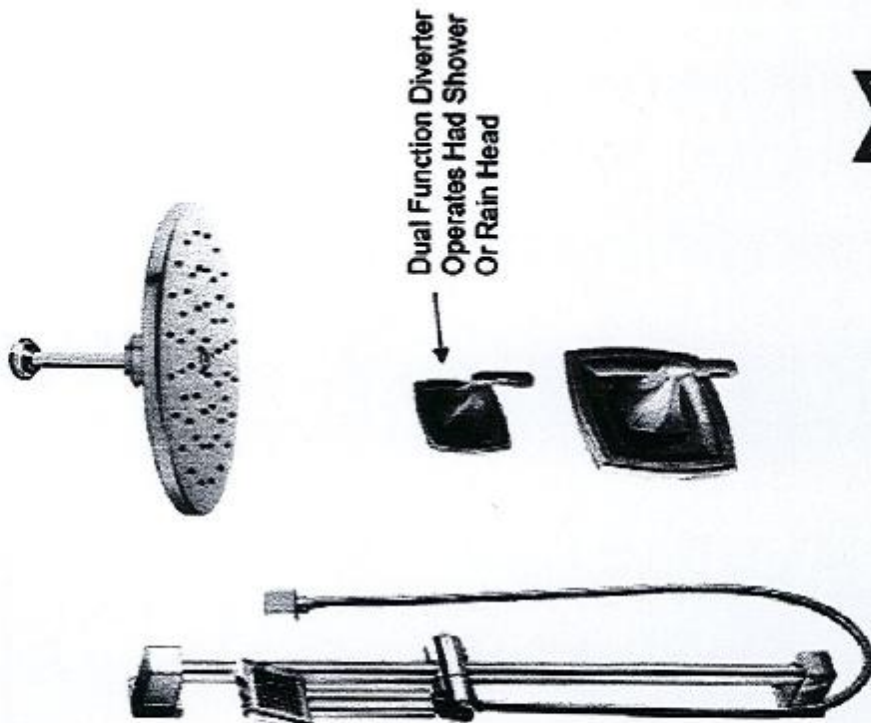
- 1) Hand Shower Bar and
  - 2) Ceiling Rain Head
- With Deletion of Toe Tester Diverter  
In lieu of Standard

#### Trim Packages

- 1x Moen S112 10" Rain Head
- 1 x Moen 116651 Ceiling Arm
- 1 x Moen AT2119 Ceiling Arm Flange
- 1 x Moen S3879EP
- 1 x Moen A721
- 1 x Moen T411 Voss Diverter
- 1 x Moen 3372 Diverter RI

Price - Chrome      \$1900.00 + HST

9/28/2015



MASTER ENSUITE

SENATOR HOMES  
DECOR CENTRE

DATE: MAR 03 2016  
INITIALS: A.G.

T-57



T-57

SENATOR HOMES  
DECOR CENTRE

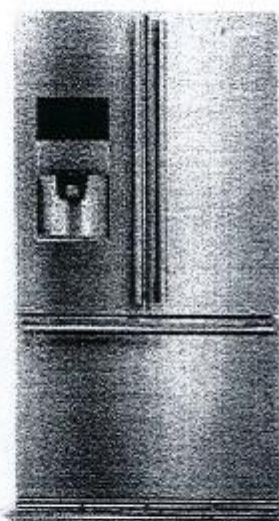
DATE: MAR 03 2016

INITIALS: A Z

Electrolux | ICON®

## French Door Refrigerator

E23BC78IPS professional series



## Custom Temp Drawer™

Enjoy the ultimate in versatility with 9 preset selections including White/Sparkling Wine, Fish/Shellfish, Cheese plus three customizable settings that ensure foods stay at the ideal temperature for serving and maintaining freshness.



## Custom-Design™ Organization System

With our flexible Tri-Level freezer organization system you can keep your freezer well organized. The three Smooth-Glide® baskets with removable dividers and top removable baskets allow you to configure the space to neatly fit large and small items.



## Theatre Lighting

Transition LED lighting gradually illuminates the interior with soft but ample light as you open the door.



## PureAdvantage® Filtration Systems

Our filtration system keeps clean, filtered air circulated throughout to prevent odor transfer and keeps fresh, clean water and ice at your fingertips.

23 CU. FT. COUNTER-DEPTH  
FRENCH DOOR REFRIGERATOR

CAPACITIES	
Total Capacity	22.6 Cu. Ft.
Fresh Food Volume	15.7 Cu. Ft.
Freezer Volume	6.9 Cu. Ft.
Total Shelf Area	26.45 Sq. Ft.
Fresh Food Shelf Area	16.72 Sq. Ft.
Freezer Shelf Area	7.7 Sq. Ft.

EXTERIOR	
Professional Doors and Handle Design	Yes
Water-Touch™ Electronic Controls	Yes
Door Hinge Covers	Yes
Ice/Water Dispenser	Yes
Custom-Eat™ Temperature Control System and Display	Yes
Crushed/Cubed Water	Yes
Air and Water Filter Indicator/Reset	Yes
Ice Maker On/Off	Yes
Fast Freeze	Yes
Look/Dispenser Light Control	Yes/Yes

FRESH FOOD CONVENIENCES	
PureAdvantage® Water & Ice / Air Filterator	Yes
Water Filter Location	Bottom Left
Temp Alarm System / Door Ajar Alarm / Power Failure Alarm	Yes
Custom-Design™ Glass Shelves	3 Half Width 1 Quarter Width
Smooth-Glide® Humidity-Controlled Left Crisper	Yes
Smooth-Glide® Humidity-Controlled Right Crisper	Yes
Custom Temp Drawer™	Yes
Wine Rack	Yes
Clear/Buffon Adjustable Door Bins	1
Clear 1/2-Gallon Adjustable Door Bins	1
Clear 2-1/2-Gallon Removable Door Bins	2
Locking Clear Utility Bin	Yes
Tilt-Out Can Rack	2
Theatre Ramp-Up Multilevel Lighting - LED	Yes
Automatic Ice Maker	Yes

FREEZER CONVENIENCES	
Self-Closing Drawer	Yes
Biding Full-Width Freezer Drawers	3 Smooth-Glide® (2 with Dividers)
Plastic Basket Tray	1
Tilt-Out Wire Door Rack	1
Theatre Ramp-Up Multilevel Lighting - LED	Yes

ADDITIONAL FEATURES	
ENERGY STAR®	Yes
Sabbath Mode (Star-K® Certified)	Yes

ACCESSORIES	
Collar Kit - PNE EDK2300G*	Optional
Lockvent Tiro Kit - PNE S4923001*	Optional
Water Filter Replacement Cartridge - PNE EW1 01	Optional
Air Filter Replacement Cartridge - PNE EAFCDP	Optional

SPECIFICATIONS	
Overall Exterior Dimensions -	
Height (with Hinges and 3/8" Fingers)	69-1/2"
Cabinet Width/Door Width	35-5/8"/35"
Depth (Including Handle)	28-1/2"
(with 50" Doors Closed)	42-3/16"
(with Doors Fully Extended)	44-1/2"
Power Supply Connection Location	Right Bottom Rear
Water Inlet Location	Left Bottom Rear
Voltage Rating	120V/60Hz/15 or 20A
Connected Load (kW Rating) @ 120 V.A.C.	1.02
Minimum Circuit Required (Amps)	15
Shipping Weight (Approx.)	340 Lbs.

\*For detailed Covered Tiro Kit and Collar Kit installation instructions, refer to Product Installation Guide on the web at electroluxicon.ca.

For electrical supply with grounded three-prong receptacle is required. The power supply circuit must be installed in accordance with current edition of National Electrical Code (NEC 90) and local codes & ordinances.

NOTE: Always consult local and national electric and plumbing codes. Refer to Product Installation Guide for detailed installation instructions on the web at electroluxicon.ca. Specifications subject to change.



T-57

SENATOR HOMES  
DECOR CENTRE

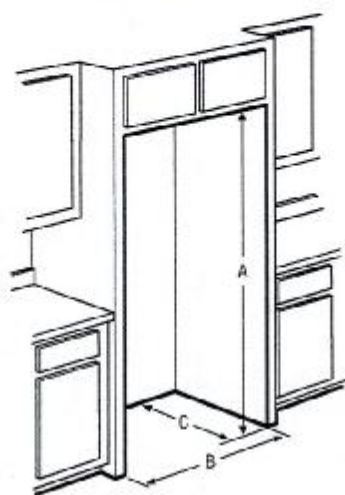
DATE: MAR 03 2016

INITIALS: AS

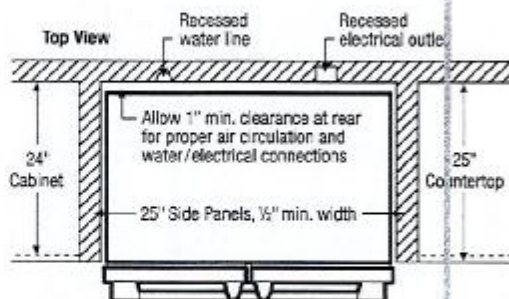
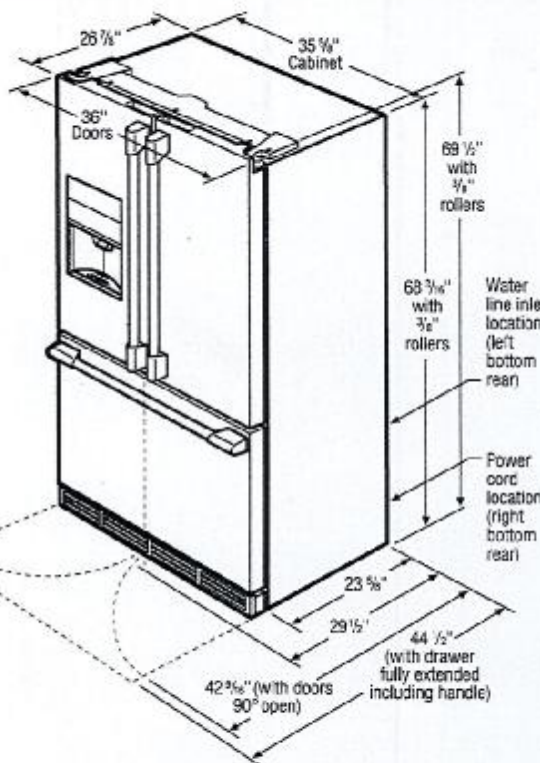
## French Door Refrigerator

E23BC78IPS professional series

Electrolux | ICON®

**"Built-In Look" Cutout Dimensions**

(A) 70 1/4" (B) 35" (C) 25"

**Standard Refrigerator Depth vs. Counter Depth**

**Note:** Optional Louvered Trim Kit and Collar Kit available for French Door Counter-Depth Refrigerator. For specifications, refer to Louvered Trim Kit (241723001) Installation page or Collar Kit (ECK23CDS) Installation page on web.

**Counter-Depth French Door Refrigerator Specifications**

- Product Weight = 338 Lbs.
- An electrical supply with grounded three-prong receptacle is required. The power supply circuit must be installed in accordance with current edition of National Electrical Code (NFPA 70) and local codes & ordinances.
- Voltage Rating - 120V/50-Hz/15 or 20 Amps.
- Connected Load (kW Rating) @ 120 Volts = 1.02 kW
- Amps @ 120 Volts = 8.5 Amps
- Always consult local and national electric & plumbing codes.
- Floor should be level surface of hard material, capable of supporting full loaded refrigerator.
- When installing refrigerator adjacent to wall, cabinet or other appliance that extends beyond front edge of unit, 20" minimum clearance recommended to allow for optimum 120° to 180° door swing, providing complete drawer/crisper access and removal. (Absolute 4-1/2" minimum clearance will ONLY allow for 90° door swing which will provide drawer/crisper access with restricted removal.)
- To ensure optimum performance, avoid installing in direct sunlight or close proximity to range, dishwasher or other heat sources.
- For proper ventilation, front grille MUST remain unobstructed.
- Recess electrical outlet when possible.
- Water recess on rear wall recommended to prevent water line damage.
- Water Pressure - Cold water line must provide between 30 and 100 pounds per square inch (psi).

- Copper tubing with 1/4" O.D. recommended for water supply line with length equal to distance from rear of unit to household water supply line plus 7 additional feet. Optional Water Supply Installation Kits available.
- Adjustable front rollers to assist with door alignment.
- If optional Collar Kit (PN# ECK23CDS) is to be used, different cutout dimensions are required. (Refer to Collar Kit ECK23CDS Installation Specifications page on web.)
- If optional Louvered Trim Kit (PN# 241723001) is to be used, different cutout dimensions are required. (Refer to Louvered Trim Kit 241723001 Installation Specifications page on web.)

**"Built-In Look" Specifications**

- Minimum opening of 70-1/4"H x 35"W x 25"D required to allow for ease of installation, proper air circulation, and plumbing/electrical connections.
- Remove all wall/floor molding prior to installation.

**Note:** For planning purposes only. Refer to Product Installation Guide on the web at [electroluxicon.ca](http://electroluxicon.ca) for detailed instructions.

**Optional Accessories**

- Collar Kit - (PN# ECK23CDS).
- Louvered Trim Kit - (PN# 241723001).
- PureAdvantage® Water Filter Replacement Cartridge - (PN# EWFO1).
- PureAdvantage® Air Filter Replacement Cartridge - (PN# EAFCBF).

**Electrolux Major Appliances, N.A.**CANADA • 5855 Terry Fox Way • Mississauga, ON L5V 3E4 • 1-800-265-8352 • [electroluxicon.ca](http://electroluxicon.ca)

E23BC78IPS 01/12

© 2012 Electrolux Major Appliances, N.A.

High standards of quality at Electrolux Major Appliances, N.A. mean we are constantly working to improve our products. We reserve the right to change specifications or discontinue models without notice.

Printed in Canada



T-57  
SENATOR HOMES  
DECOR CENTRE

DATE: MAR 03 2016  
INITIALS: A-S



# GAS FREESTANDING RANGE

EI30GF45QS

Featuring IQ-Touch™ Electronic Controls

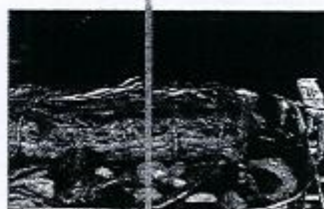


## SIGNATURE FEATURES



### FRONT CONTROL DESIGN

Effortlessly upgrade your back-control range to built-in style. This range will easily replace traditional 30" freestanding ranges.



### PERFECT TASTE™ CONVECTION

For consistently delicious taste and texture, home chefs rely on our convection heat, which circulates air evenly for better baking.



### OVAL BURNER + INCLUDED GRIDDLE

Allows you to cook with larger pots and pans or use the complementary griddle to achieve a variety of perfect flavors.



### PERFECT TASTE™ TEMP PROBE

The Perfect Taste™ Temp Probe lets you cook each dish to perfection. It does more than measure temperature — it alerts you when food has reached the desired temperature and automatically adjusts to the Keep Warm setting, so you never overcook your food and deliver perfect results every time.

## PRODUCT DIMENSIONS

Height	36 1/8" - 36 5/8"
Width	29-7/8"
Depth	26"

## MORE EASY-TO-USE FEATURES

### MIN-2-MAX® GAS BURNER

Designed with a dual-flame sealed burner, this cooktop provides exceptional power and precision to unlock new flavors.

### A LUXURY GLIDE® OVEN RACK

With a ball bearing system, the oven rack is so smooth, it extends effortlessly so you can more easily manage the transfer of all dishes, even heavy ones.

### CONTINUOUS GAS GRATES

Designed for cooking multiple dishes at a time, these grates allow easy movement of even the heaviest pots and pans from burner to burner — without lifting. Plus, they create a streamlined look.

### DEEP-WELL DESIGN

Keeps spills contained for easy cleanup.

### WARMER DRAWER

Maintain the perfect temperature of your food until serving time.

### PLATINUM STAR® LIMITED WARRANTY

Our exclusive limited warranty that includes 3-year coverage on parts and one year on labor.\*

### CONVECTION CONVERSION

Automatically adjusts standard baking temperatures to convection temperatures, for perfect, consistent results.

### 6 COOKING MODES

Bake, Broil, Convection Bake, Convection Roast, Keep Warm and Slow Cook.

### KEEP WARM SETTING

Maintain food at the perfect serving temperature with this setting — it's a great feature when you're entertaining.

### A.D.A. COMPLIANT

When properly installed, this model is A.D.A.-qualified based on the United States Access Board's A.D.A./A.B.A. Accessibility Guidelines and the Department of Justice's 2010 A.D.A. Standards for Accessible Design.

Available in:



Stainless  
(S)

\*For best results, use large cookware on our sealed burner.

†Eligible service is provided by authorized service providers in the U.S. only. Excludes parts and labor. Product must be registered with the company by July 1, 2015. Coverage includes certain parts for 3 years and labor for 1 year.

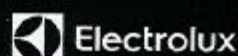
BURNER	838
WARRANTY (3 Year/50,000 Cycles)	10,000
Sealed Burner, Gas	4,200
Sealed Precision Burner	4,500
Sealed Precision Burner	5,000
Control System	10,000

ELECTROLUXAPPLIANCES.COM



## GAS FREESTANDING RANGE

EI30GF45QS



### 30" GAS FREESTANDING RANGE

#### CONTROL PANEL FEATURES

IQ-Touch™ Electronic Oven Control	Yes
Professional-Grade Burner Controls	Yes
Blaze First™ Feature	Yes
Electronic Clock & Timer	Yes
Temperature Display	Yes
Automatic Oven (Delay, Cook & Off)	Yes

#### COOKTOP FEATURES

Sealed Power Burner – 16,000 BTU	1
Sealed Power Burner – 14,200 BTU	1
Sealed Precision Burner – 9,500 BTU	1
Sealed Precision Burner – 6,000 BTU	1
Center Oval Burner – 10,000 BTU	1
Continuous Grates with Deep-Well Top	Yes
Seamless Cooktop	Yes
Electric Pilotless Ignition	Yes

#### OVEN FEATURES

Capacity	4.5 Cu. Ft.
Hidden Bake Burner	
Bake Burner – 16,000 BTU	Yes
Broil Burner – 13,500 BTU	Yes
Convection Burner – 360° Multi	Yes
Convection Interior	Yes
Self-Clean Options with Door Lock	Yes
Perfect Taste™ Convection	Yes
Darking Modes – Bake, Broil, Convection Bake, Convection Roast, Keep Warm, Slow Cook	6
Baking Options – Temperature Probe, Delay Bake, Convection Control	3
Oven Light	Yes
Luxury-Glide® Racks	1
Conventional Racks	1
Convection Rotating Rack	1

#### ADDITIONAL FEATURES

Luxury-Hold™ Oven Door	
Extra-Large Glass Window	Yes
Warmer Drawer	Yes
Adjustable Leveling Legs	Yes
Sabbath Mode (Star-K® Certified)	Yes
A.D.A. Compliant*	Yes

#### ACCESSORIES

Stainless Steel – Pk # 318251608	Included
P Gas Conversion Kit	Included
Meat Probe	Included

#### SPECIFICATIONS

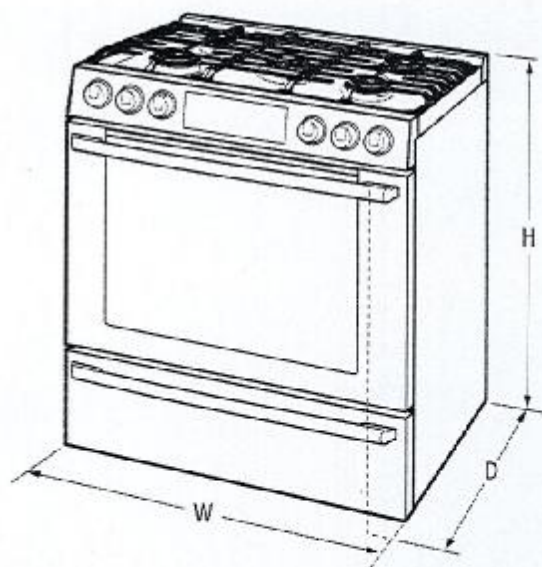
Color –	Stainless Steel
Gas Inlet / Power Cord Location	Right Bottom Rear
Voltage Rating	120V 60Hz AC
Connected Load (kW) Rating @ 120 volts*	1.80
Shipping Weight (Approx.)	300 Lbs.

\*When properly installed, this range is A.S.A. qualified based on the United States National Electrical Code (NEC) and the Canadian Electrical Code (CEC). Always follow local codes and regulations.

For use on propane, select 1.20 dedicated circuit rating 3-wire cord set with a grounded neutral wire. Always use the grounded air side operation.

NOTE: Always consult local and national electrical and gas codes. Refer to Product Installation Guide for detailed installation instructions on the web at [electroluxusa.com](http://electroluxusa.com).

Specifications subject to change.



#### PRODUCT DIMENSIONS

Height (Adjustable)	30-1/2" - 30-5/8"
Width	29 7/8"
Depth (to Outside of Feet) With 60° Door Open	26" 46"

#### OVEN CAVITY DIMENSIONS

Height	17-1/2"
Width	24-1/8"
Depth	18-3/4"

### Electrolux Major Appliances, N.A.

USA • 10200 David Taylor Drive • Charlotte, NC 28262 • 1-877-4electrolux (1-877-435-3287) • [electroluxappliances.com](http://electroluxappliances.com)  
 CANADA • 5855 Terry Fox Way • Mississauga, ON L5V 3E4 • 1-800-265-3352 • [electroluxappliances.ca](http://electroluxappliances.ca)

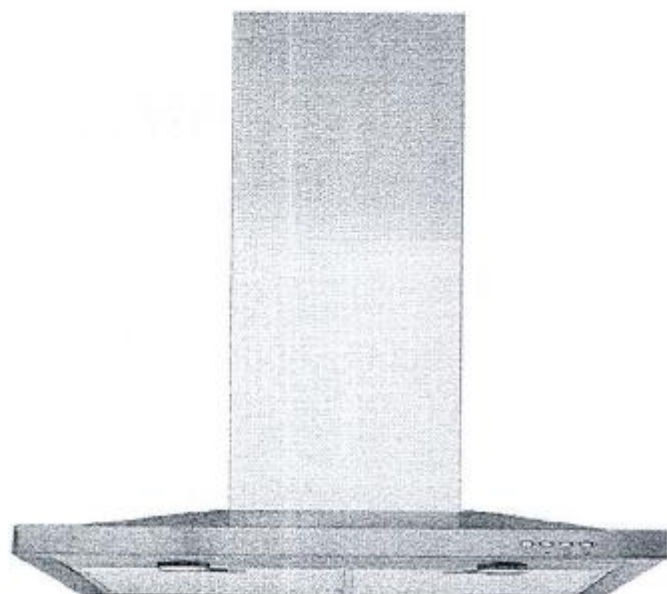
EI30GF45Q 02/15

© 2015 Electrolux Home Products, Inc.



High standards of quality at Electrolux Home Products, Inc. mean we are constantly working to improve our products. We reserve the right to change specifications or discontinue models without notice.





## Venmar® 30" Pyramid-Style Chimney Hood – Stainless Steel

**\$599.97**

Item Code: VJ51030SS

**Dimensions:** Width: 30" Height: 42.75" Depth: 19.75"

Enjoy the contemporary style this pyramid-style Venmar chimney hood brings to your kitchen. The cleverly recessed blower saves space, allowing for a thin and minimalist design that will effortlessly complement many styles and settings. Dual halogen lights illuminate the cooktop and the push-button controls make this unit simple to use. Plus, an HVI certification ensures the performance standards you look for in a chimney hood.

**SENATOR HOMES  
DECOR CENTRE**

DATE: MAR 03 2016

INITIALS: A-S



### Key Features:

- HVI Certified High-Performance Three-Speed Fan
- Dual Halogen Lights
- Electronic Push-Button Controls with Blue LED Backlighting
- Dishwasher-Safe Filters

### HVI Certified High-Performance Three-Speed Fan

The Home Ventilating Institute (HVI) certifies the performance of North American home ventilating products, so you can be certain that this chimney hood will surpass your expectations. With three speeds, effortlessly select and adjust fan speed to suit your ventilation requirements.

### Dual Halogen Lights

Brightly illuminate your cooktop and make it easy to see what's for dinner.

### Electronic Push-Button Controls with Blue LED Backlighting

You'll quickly appreciate the easy-to-use electronic push button controls and adore the attractive, modern blue LED backlighting.

### Dishwasher-Safe Filters

The filters are dishwasher safe, making them easy to clean.

### Detailed Specifications

#### General:

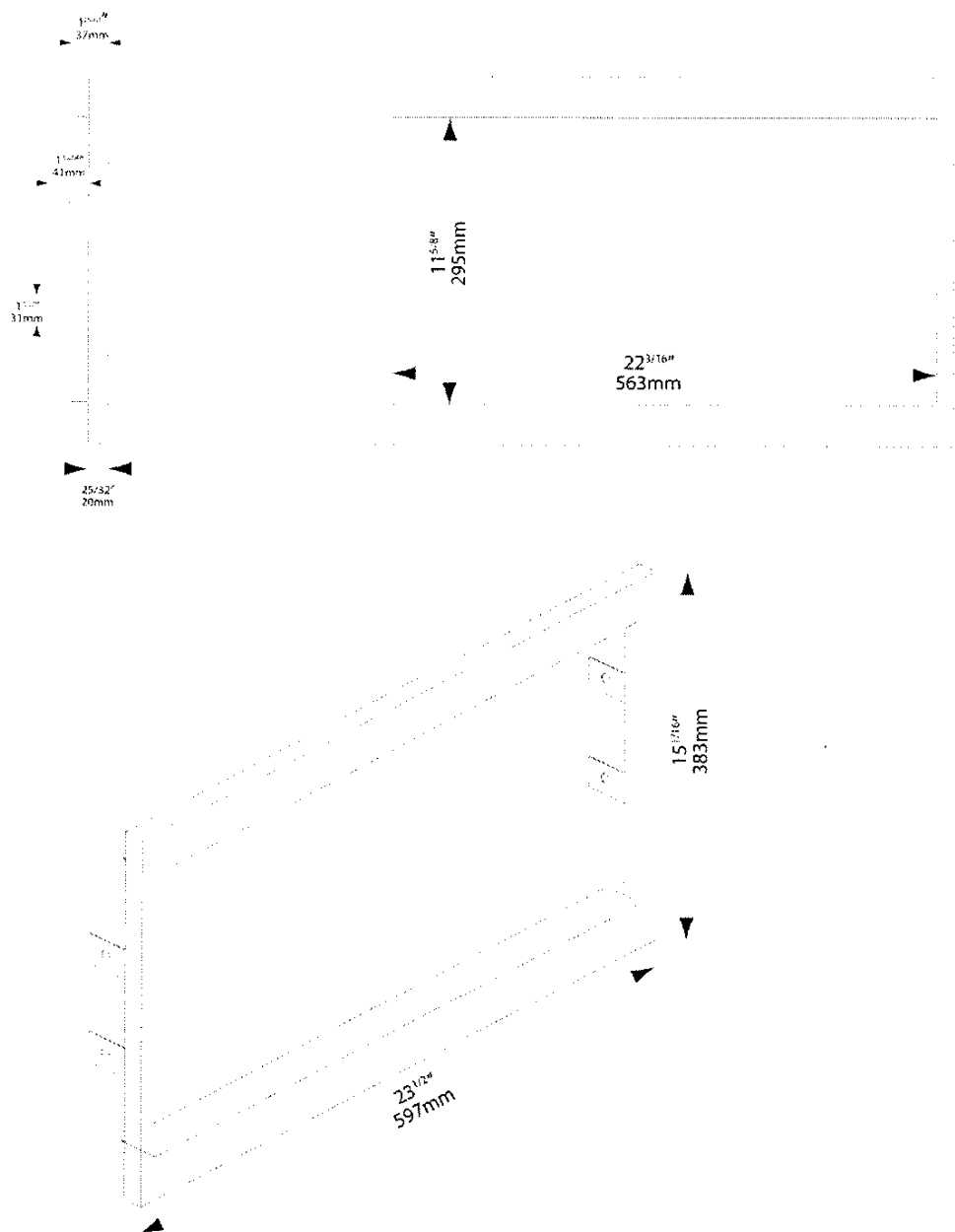
- Hood Type: Chimney
- Colour: Stainless Steel
- Control Type: Push Button
- Total Hood Power Consumption: 400W
- Ducting Size: 6"
- Sound Level (Sones): 2.5

#### Vent and Light System:

- Ventilation Speeds: 3
- CFM: 190 (Low Speed), 450 (High Speed)

# MWTK-60

## 24" / 60cm Stainless Steel Trim Kit



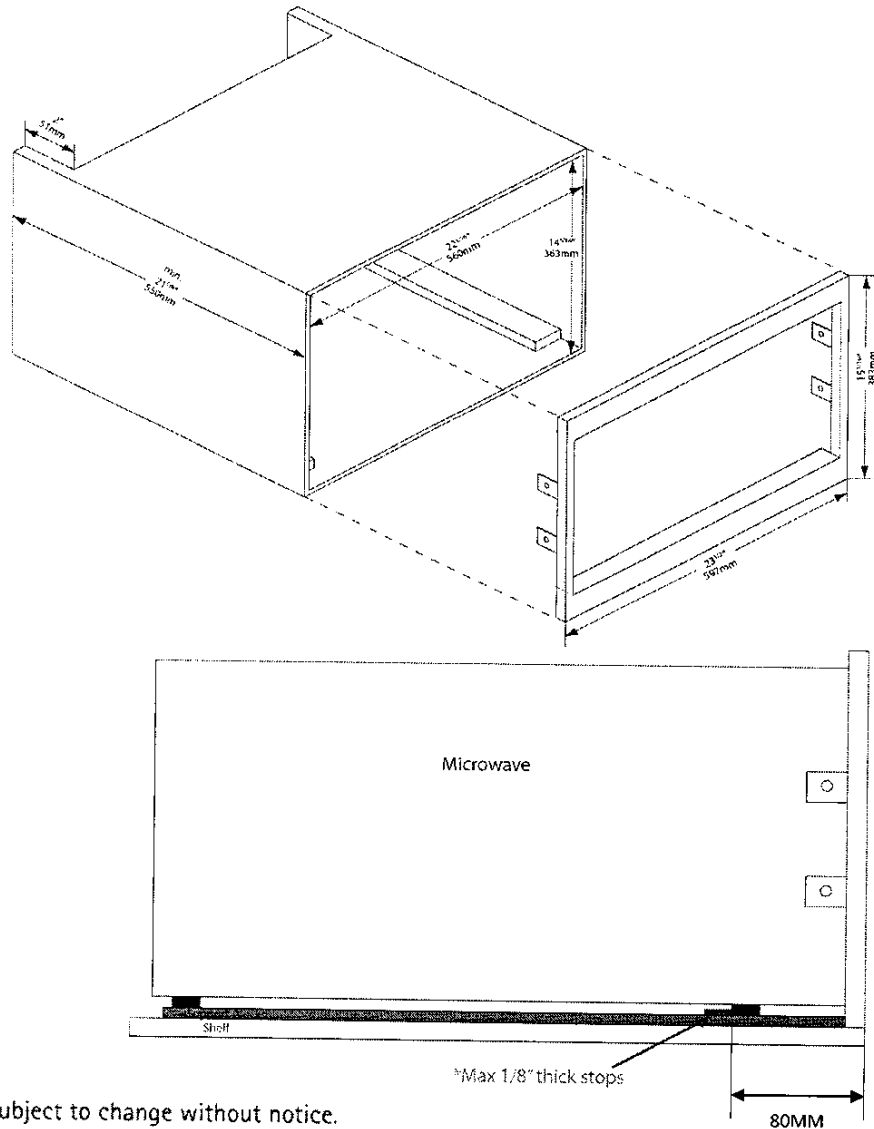
Specifications are subject to change without notice.  
Detailed Specification Available at [www.aeg-appliances.ca](http://www.aeg-appliances.ca)



# MWTK-60

## 24" / 60cm Stainless Steel Trim Kit

- For use with Panasonic microwave NNSD797 or equivalent
- Wooden support provided with MWTK60 kit
- Please keep and reuse wood screws provided with the kit



Specifications are subject to change without notice.

Detailed Specification Available at [www.aeg-appliances.ca](http://www.aeg-appliances.ca)

**AEG**





INTERIOR COLOUR SCHEME

T-57

Purchaser: Hamed Mahmoud Gulam

Property: 57 of Plan -

Telephone Res. / Bus: (905) 830-0983 /

Project: Teefy Developments Limited

Decor Advisor: Diana Rojas

Model and Elevation: Bedford(22-2)

Layout Changes: ☐ Yes ☒ No      Sketch Attached: ☒ Yes ☐ No      Exterior Colour Scheme:

1. Cabinetry	Style and Colour	Counter Top	Hardware
Kitchen / Breakfast	DENOVA - ANNEX DHGL ARCTICO GLOSS	QUARTZ - 9141	12829 HANDLE*
Kitchen Island	DENOVA - ANNEX DHGL ARCTICO GLOSS	QUARTZ - 9141	12829 HANDLE*
Laundry Room	CAMDEN MAPLE - SOAPSTONE CL		9677 HANDLE
Powder Room	CAMDEN MAPLE - SOAPSTONE CL	WHITE CARRARA 4924-38	9677 HANDLE
Main Bathroom	CAMDEN MAPLE - SOAPSTONE CL	WHITE CARRARA 4924-38	9677 HANDLE
Master Ensuite Bathroom	CAMDEN MAPLE - SOAPSTONE CL	MARBLE - VOLAKIS (GR2)*	9677 HANDLE
Second Ensuite Bathroom (If Applicable)			
LOWER BATH	CAMDEN MAPLE - SOAPSTONE CL	WHITE CARRARA 4924-38	9677 HANDLE

Appliances	Custom Size Fridge <input checked="" type="radio"/> Yes <input type="radio"/> No	Valance Lighting <input checked="" type="radio"/> Yes <input type="radio"/> No	Microwave / Range Hood <input type="radio"/> Yes <input checked="" type="radio"/> No
	Cooktop / Rangetop <input type="radio"/> Yes <input checked="" type="radio"/> No	Built in Wall Oven <input type="radio"/> Yes <input checked="" type="radio"/> No	Slide-in Range <input type="radio"/> Yes <input checked="" type="radio"/> No

Comment  
SEE SPECS ATTACHED

2. Flooring	Selection
FOYER	12X24 VEINS SERIES - CALCUTTA BIANCO POLISHED*
Main Hall	5"X3/4" VINTAGE SOLID SAWN HAND SCRAPED CHARACT WHITE OAK - OTHELLO
Back Hall	
Breakfast	5"X3/4" VINTAGE SOLID SAWN HAND SCRAPED CHARACT WHITE OAK - OTHELLO
Laundry Room	
Kitchen	5"X3/4" VINTAGE SOLID SAWN HAND SCRAPED CHARACT WHITE OAK - OTHELLO
Powder Room	12X24 VEINS SERIES - CALCUTTA BIANCO POLISHED*
Main Bathroom	12X24 VEINS SERIES - CALCUTTA BIANCO POLISHED*
Master Ensuite Bathroom (If Applicable)	12X24 VEINS SERIES - CALCUTTA BIANCO POLISHED*
Mud Room	13X13 NEW ALBION - GREY
LOWER BATH	12X24 VEINS SERIES - CALCUTTA BIANCO POLISHED*
Living Room	
Dining Room	5"X3/4" VINTAGE SOLID SAWN HAND SCRAPED CHARACT WHITE OAK - OTHELLO
Family / Great Room	5"X3/4" VINTAGE SOLID SAWN HAND SCRAPED CHARACT WHITE OAK - OTHELLO
Den / Library / Study	LOWER REC ROOM = PAPILIO - 17185 SOFT CAMEO
Basement Landing (If Applies)	PAPILIO - 17185 SOFT CAMEO
Lower Landing (If Applicable)	
Upper Landing	5"X3/4" VINTAGE SOLID SAWN HAND SCRAPED CHARACT WHITE OAK - OTHELLO
Upper Hall	5"X3/4" VINTAGE SOLID SAWN HAND SCRAPED CHARACT WHITE OAK - OTHELLO
Master Bedroom	PAPILIO - 17185 SOFT CAMEO
Bedroom #2	PAPILIO - 17185 SOFT CAMEO
Bedroom #3	PAPILIO - 17185 SOFT CAMEO
Bedroom #4	
Bedroom #5	
ENSUITE SHOWER FLOOR	2X2 ONTARIO MOSAIC MATTE - DARK GREY*

Flooring Continued on Page 2

Initial: A-G



## INTERIOR COLOUR SCHEME

T-57

Purchaser: Hamed Mahmoud Gulam

Property: 57 of Plan -

Telephone Res. / Bus: (905) 830-0983 /

Project: Teeffy Developments Limited

Decor Advisor: Diana Rojas

Model and Elevation: Bedford(22-2)

## 2. Flooring - Continued -

Upgrade Underpad	Type	Area
	STND	BEDROOMS AND LOWER REC ROOM
Carpet on Stairs	Capped	Runner - *Upgrade
Comment		

## 3. Plumbing Fixtures / Faucets

Kitchen	STND	Second Ensuite		Powder Room	STND
Master Ensuite	STND			Other Room	
Main Bathroom	STND	LOWER BATH	STND		

Comment

## 4. Wall Tile

	Tile Selection	Listello	Insert	Insert Selection
Main Bathroom	8X10 SERPENTINE - SYRAK (CHARCOAL)	<input type="checkbox"/>	<input type="checkbox"/>	
Master Ensuite				
Tub Deck		<input type="checkbox"/>	<input type="checkbox"/>	
Tub Apron		<input type="checkbox"/>	<input type="checkbox"/>	
Tub Surround		<input type="checkbox"/>	<input type="checkbox"/>	
Shower Stall	12X24 PORTLAND TABOURI (CHARCOAL)	<input type="checkbox"/>	<input type="checkbox"/>	
Second Ensuite		<input type="checkbox"/>	<input type="checkbox"/>	
LOWER BATH	8X10 SERPENTINE - SYRAK (CHARCOAL)	<input type="checkbox"/>	<input type="checkbox"/>	
Kitchen Backsplash		<input type="checkbox"/>	<input type="checkbox"/>	
Complete Backsplash		<input type="checkbox"/>	<input type="checkbox"/>	

Comment

ALL WALL TILES TO BE HORIZONTAL STACK INSTALLATION

## 5. Fireplace

	Living Room			Family Room			Other Room - Specify		
	Purchased	As Per Plan	N/A	Purchased	As Per Plan	N/A	Purchased	As Per Plan	N/A
Fireplace Type	<input type="radio"/>	<input type="radio"/>	<input type="radio"/>	<input type="radio"/>	<input checked="" type="radio"/>	<input type="radio"/>	<input type="radio"/>	<input type="radio"/>	<input type="radio"/>
Mantle Type				BLF50					
Over Mantle									
Colour / Stain									
Surround									
Hearth									

Comment

Initial:

A-G

Page 2 of 3

**Purchaser:** Hamed Mahmoud Gulam  
**Telephone Res. / Bus:** (905) 830-0983 /  
**Decor Advisor:** Diana Rojas

**Property:** 57 of Plan -  
**Project:** Teefy Developments Limited  
**Model and Elevation:** Bedford(22-2)

### 6. Trim Carpentry

Door Hardware

Interior Trim

Comment

#### Interior Doors

- ☐ 2 Panel Arch Top  
☒ 2 Panel Square Top  
☐ 6 Panel



Initial for Door Style

AE

### 7. Railings and Pickets

Railing Package

Railing Colour

Wood Stairs ☐ No ☒ Oak

Picket Colour

Tread Colour

Comment

### 8. Plaster Mouldings and Medallions

Foyer

Kitchen/Breakfast

Main Hall

Den/Library

Living Room

Lower Landing

Dining Room

Family Room

Comment

### 9. Wall Paint

- Smooth Ceilings ☐ First Floor  
☐ First Floor incl. Second Floor Hall  
☐ First and Second Floor  
☒ Throughout  
☐ Not Applicable

Trim Paint

### 10. Additional Comments

### 11. Disclaimers and Notes

- Colours of all materials are as close as possible to builder's selection, but not necessarily identical due to variances in manufacturing.
- Any extras listed above are null and void unless accompanied by a separate invoice/amendment. Said invoice must be paid in full.
- The Purchaser acknowledges that after Interior Colour Selection form is signed and dated, no further changes will be permitted other than re-selection due to unavailability. AE Purchaser's Initials
- The Purchaser acknowledges reading and accepting the "Senator Homes Décor Centre Disclaimers" form. This document contains other miscellaneous disclaimers.

This Interior Colour Selection is final and approved by:

Purchaser:

Signature:

Hamed Mahmoud Gulam

Date:

MARCH 03, 2016

Vendor:

Teefy Developments Limited

[Signature]