



CONSTRUCTION SUMMARY

Teefy Developments Limited / 9130 Bathurst

Lot/Unit: 23 Phase/Building: 1 Model/Floor Plan: Allerton(23-1)

CABINETRY

Inv.3179	1 - SUPPLY AND INSTALL 120CM KITCHEN UPPERS IN LIEU OF THE STANDARD 100CM	
Line 45844	Note:	
lSep15 / 9Apr16		

CABINETRY ACCESSORIES

Inv.3179	4 - KITCHEN - LIGHT VALANCE	
Line 42149	Note:	
lSep15 / 9Apr16		
Inv.3179	1 - DIFFERENT COLOUR ISLAND THAN KITCHEN COLOUR	
Line 42156	Note:	
lSep15 / 9Apr16		
Inv.3179	5 - CROWN MOULDING - NOT APPLICABLE FOR THERMOVISION - PRICE IS PER 8 FOOT LENGTH	
Line 45843	Note:	
lSep15 / 9Apr16		

CABINETRY APPLIANCE - FRIDGE

Inv.3179	1 - KITCHEN - RELOCATE FRIDGE AS INDICATED ON SKETCH & SUPPLY AND INSTALL 66 CM DEEP FRIDGE CABINET WITH 1 GABLE	
Line 42146	Note:	
lSep15 / 9Apr16		

CABINETRY BASE CABINETS

Inv.3179	3 - KITCHEN - TOP DRAWER PRICE PER DRAWER AS INDICATED ON SKETCH	
Line 42157	Note:	
lSep15 / 9Apr16		

CABINETRY HARDWARE

Inv.3179	1 - KITCHEN - BASE WASTE / RECYCLE CENTER PULL OUT DOOR - ONLY AVAILABLE IN 45 CM CABINET (2) 35L BINS	
Line 42148	Note:	
lSep15 / 9Apr16		

CABINETRY HOOD FANS

Inv.3179	1 - KITCHEN - ACCOMMODATE FOR 36" CHIMNEY STYLE HOODFAN - PURCHASER MUST SUPPLY SPECS	
Line 42158	Note:	
lSep15 / 9Apr16		

CABINETRY MICROWAVE OVEN STOVE COOKTOP

Inv.3179	1 - TALL BUILT-IN MICROWAVE/WALL-OVEN, 80CM WIDE, 66CM DEEP, 1 BOTTOM DRAWER - PURCHASER HAS SUPPLIED SPECS	
Line 42144	Note:	
lSep15 / 9Apr16		



CONSTRUCTION SUMMARY

Teefy Developments Limited / 9130 Bathurst

Lot/Unit: 23 Phase/Building: 1 Model/Floor Plan: Allerton(23-1)

Inv.3179	1 - RANGETOP CABINET (MODIFIED HEIGHT) WITH POTS AND PANS DRAWERS BELOW - PURCHASER MUST SUPPLY SPECS - UPGRADE 1	
Line 46429	Note:	
lSep15 / 9Apr16		

CABINETRY PANTRY

Inv.3179	1 - 1- 85cm WIDE X 66cm DEEP PANTRY	
	1- 70cm WIDE X 66cm DEEP PANTRY	
Line 46693	Note:	
lSep15 / 9Apr16		

CABINETRY VANITY

Inv.3179	3 - CABINETRY - 1 MASTER - 2 MAIN BATH - VANITY BANK OF DRAWERS	
Line 42143	Note:	
lSep15 / 9Apr16		

CABINETRY WALL AND HUTCH

Inv.3179	2 - KITCHEN - UPPER ANGLE CORNER	
Line 42152	Note:	
lSep15 / 9Apr16		

COUNTER TOP - ACCESSORIES

Inv.3179	1 - COOKTOP PROVISION	
Line 46430	Note:	
lSep15 / 9Apr16		

ELECTRICAL

Inv.3179	1 - SUPPLY AND INSTALL CAPPED CEILING LIGHT ROUGH-IN ONLY ON SEPARATE SINGLE SWITCH	
	- X1 CENTERED ABOVE KITCHEN ISLAND AS MUCH AS POSSIBLE	
	- SWITCH TO BE LOCATED NEXT TO KITCHEN LIGHT SWITCH	
Line 41194	Note:	
lSep15 / 9Apr16		
Inv.3179	1 - SUPPLY AND INSTALL LIGHT VALANCE ROUGH IN (INCLUDES 1 SWITCH)	
	- SWITCH TO BE LOCATED NEXT TO KITCHEN LIGHT SWITCH	
Line 41193	Note:	
lSep15 / 9Apr16		
Inv.3179	1 - SUPPLY AND INSTALL CAPPED CEILING LIGHT ROUGH-IN ONLY ON SEPARATE SINGLE SWITCH	
	- X1 IN THE LIVING ROOM CENTERED AS MUCH AS POSSIBLE	
	- SWITCH TO BE LOCATED AS PER SKETCH	
Line 41195	Note:	
lSep15 / 9Apr16		



CONSTRUCTION SUMMARY

Teefy Developments Limited / 9130 Bathurst

Lot/Unit: 23 Phase/Building: 1 Model/Floor Plan: Allerton(23-1)

Inv.3179	2 - SUPPLY AND INSTALL ADDITIONAL INTERIOR RECEPTACLE (NOT SEPARATE CIRCUIT) -IN MASTER BATH INSTALLED NEXT TO THE TOILET AT COUNTER HEIGHT -IN LIVING ROOM ABOVE FIREPLACE AT APPROX 5' FROM THE FLOOR-OUTLET TO BE OFFSET TO ACCOMMODATE FUTURE T.V MOUNT	
Line 41197	Note:	
lSep15 / 9Apr16		
Inv.3179	1 - ELECTRICAL - KITCHEN - SUPPLY AND INSTALL ADDITIONAL INTERIOR RECEPTACLE ON SEPARATE CIRCUIT FOR BUILT-IN MICROWAVE	
Line 42145	Note: LOCATION AS PER SKETCH ATTACHED.	
lSep15 / 9Apr16		
Inv.3179	1 - RELOCATE STD FRIDGE OUTLET TO NEW LOCATION AS INDICATED ON SKETCH RECESSED	
Line 42147	Note:	
lSep15 / 9Apr16		
Inv.3179	1 - ELECTRICAL - ROUGH-IN FOR BUILT-IN OVEN - SEE SPECS FOR DETAILS	
Line 46695	Note:	
lSep15 / 9Apr16		

FIREPLACE

Inv.3179	1 - LIVING ROOM- BASE OF FIREPLACE TRIM TO BE APPROX 6" FROM THE FLOOR TO ACCOMMODATE FUTURE WALL MOUNT T.V	
Line 46697	Note:	
lSep15 / 9Apr16		

HARDWOOD

Inv.3179	1 - HARDWOOD - UPGRADE 1 - SATIN FINISH GEN. - HOME OAK 3 5/8 INCH X 3/4 INCH - STAINS - INSTALLED IN OP - - BEDROOM 2	
Line 39482	Note: Vendor agrees to supply and install hardwood flooring in all bedrooms from Vendors standard samples at no charge.	
lSep15 / 9Apr16		
Inv.3179	1 - HARDWOOD - UPGRADE 1 - SATIN FINISH GEN. - HOME OAK 3 5/8 INCH X 3/4 INCH - STAINS - INSTALLED IN OP - - BEDROOM 3	
Line 39483	Note: Vendor agrees to supply and install hardwood flooring in all bedrooms from Vendors standard samples at no charge.	
lSep15 / 9Apr16		
Inv.3179	1 - HARDWOOD - UPGRADE 1 - SATIN FINISH GEN. - HOME OAK 3 5/8 INCH X 3/4 INCH - STAINS - INSTALLED IN OP - - MASTER BEDROOM	
Line 39484	Note: Vendor agrees to supply and install hardwood flooring in all bedrooms from Vendors standard samples at no charge.	
lSep15 / 9Apr16		

HEATING AND AIR CONDITIONING

Inv.3179	1 - GAS LINE - ROUGH-IN ONLY - FOR STOVE TO INCLUDE 110V CODE REQUIREMENT	
Line 45853	Note:	
lSep15 / 9Apr16		

PLUMBING



CONSTRUCTION SUMMARY

Teefy Developments Limited / 9130 Bathurst

Lot/Unit: 23 Phase/Building: 1 Model/Floor Plan: Allerton(23-1)

Inv.3179	1 - Vendor agrees to supply and install Optional lower level bathroom from Vendors Standard samples. Vendor further agress to include granite countertop in same bathroom from Vendors standard samples. Optional plan cost has been addes in the purchase price.	
Line 39485	Note: See Sketch Attached	
lSep15 / 9Apr16		
Inv.3179	1 - MASTER ENSUITE - FRAMELESS GLASS SHOWER ENCLOSURE WITH CHROME TOP FRAME ONLY	
Line 42155	Note:	
lSep15 / 9Apr16		

TILE - FLOOR

Inv.3179	1 - SUPPLY AND INSTALL FLOOR TILE - UPGRADE 4 - - VESTIBULE FLOOR IN BASEMENT (ON CONCRETE)	
Line 42168	Note:	
lSep15 / 9Apr16		
Inv.3179	1 - SUPPLY AND INSTALL FLOOR TILE - UPGRADE 4 - - POWDER ROOM FLOOR	
Line 42167	Note:	
lSep15 / 9Apr16		
Inv.3179	1 - SUPPLY AND INSTALL FLOOR TILE - UPGRADE 4 - GROUND FLOOR BATH FLOOR	
Line 42166	Note:	
lSep15 / 9Apr16		
Inv.3179	1 - SUPPLY AND INSTALL FLOOR TILE - UPGRADE 4 - - ENSUITE BATHROOM FLOOR	
Line 46432	Note:	
lSep15 / 9Apr16		

TILE - WALL

Inv.3179	1 - SUPPLY AND INSTALL FLOOR TILE ON WALL - UPGRADE - ENSUITE BATH SHOWER WITH CEILING	
Line 45859	Note:	
lSep15 / 9Apr16		

EXTRAS AS PER OFFER

Stainless Steel Fridge, Stove and Dishwasher and front loading washer and dryer in white from Vendors standard samples, no cash value, not transferable. (Supplied only not installed) ** to - arrange delivery call: The Brick commercial sales division at Worksheet Note:	
Rogers Free Services Package includes 6 months of: home phone, TV and Internet Service. Worksheet Note:	
Vendor agrees to supply and install hardwood flooring in all bedrooms from Vendors standard samples at no charge. Worksheet Note:	
Vendor agrees to supply and install granite countertops in all bathrooms, from Vendors standard samples at no charge. Worksheet Note:	

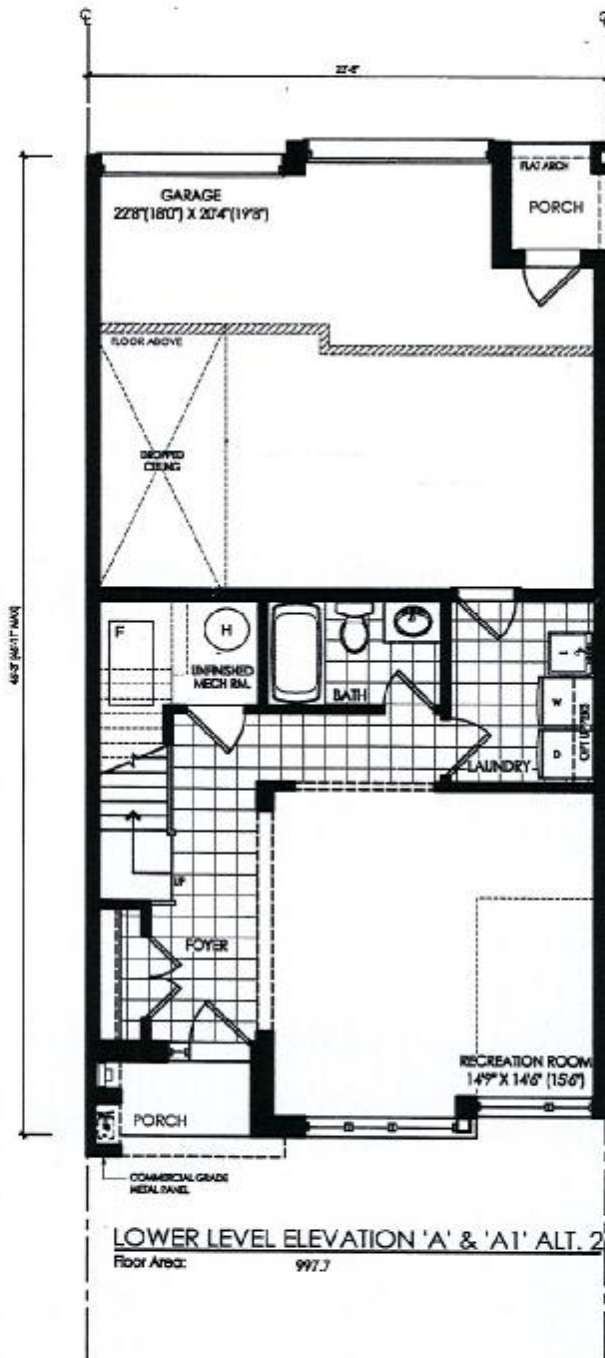
9130-23

SENATOR HOMES
DECOR CENTRE

DATE: MAR 12 2016

INITIALS: *cl. f*

CABLE, TELEPHONE
AND DATA DONE
AT GRAND ALARMS



Chuck

revisions	initials	date
1. 10/20/15 FOR CLIENT REVIEW	SM	10/20/15
2.		
3.		
4.		
5.		

Client	Senator Homes
Project	BATHURST 9130
Model	Vaughan
Project #	TH-23-1
Scale	1/8" = 1'0"
Page	LOT 23



FN design
Imagine • Inspire • Create

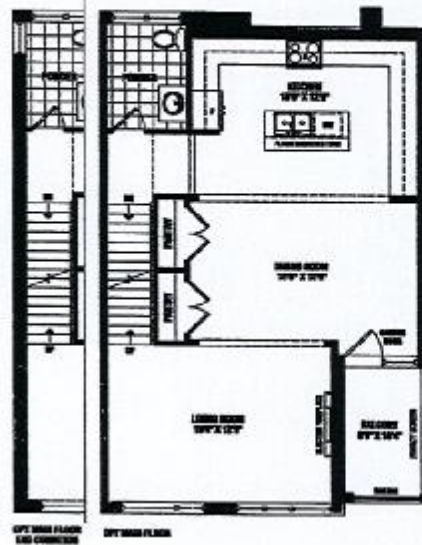
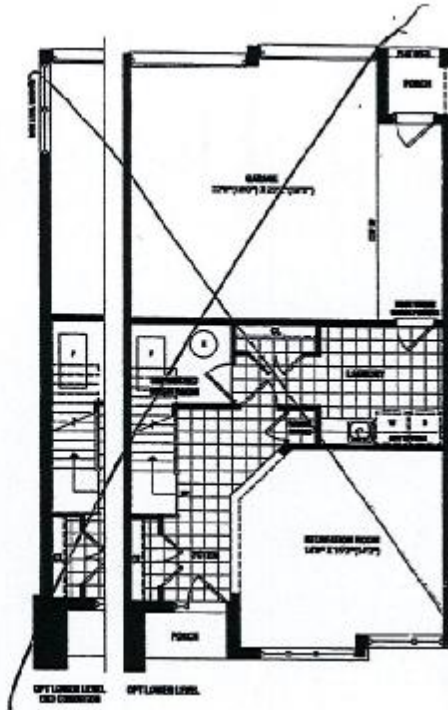
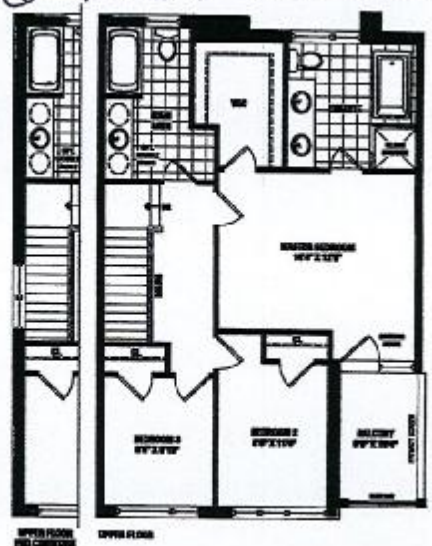
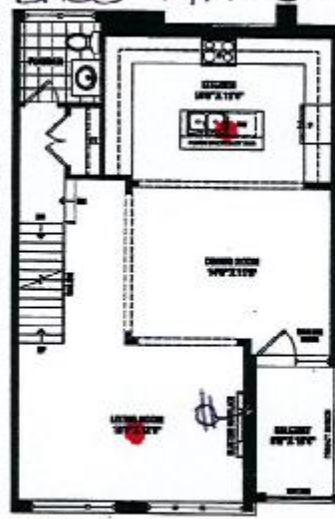
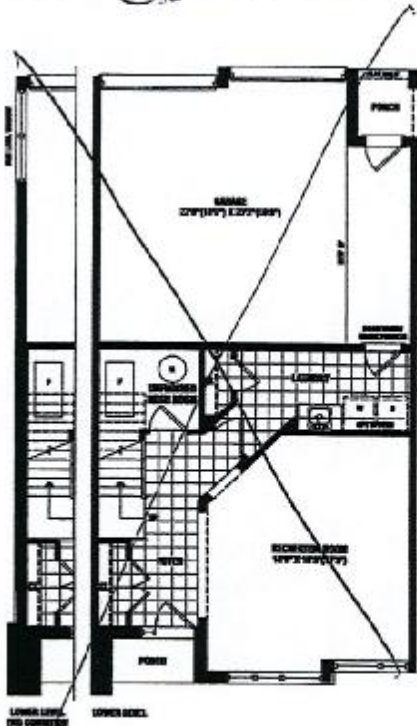
ALLERTON

2197 SQ.FT. / 2233 SQ.FT. END UNIT

9130-23
SENATOR HOMES
 DECOR CENTRE
 DATE: MAR 12 2018
 INITIALS: A. J.

CABLE, TELEPHONE
 AND DATA DONE
 KIT GRAND ALARMS.

- - CAPPED CEILING ROUGH-IN
- # - OUTLET ABOVE FIREPLACE
 5ft FROM THE FLOOR OFFSET.
- * FIREPLACE TO BE LOWERED
 BASE APPROX 6" FROM THE FLOOR



SENATOR
 HOMES

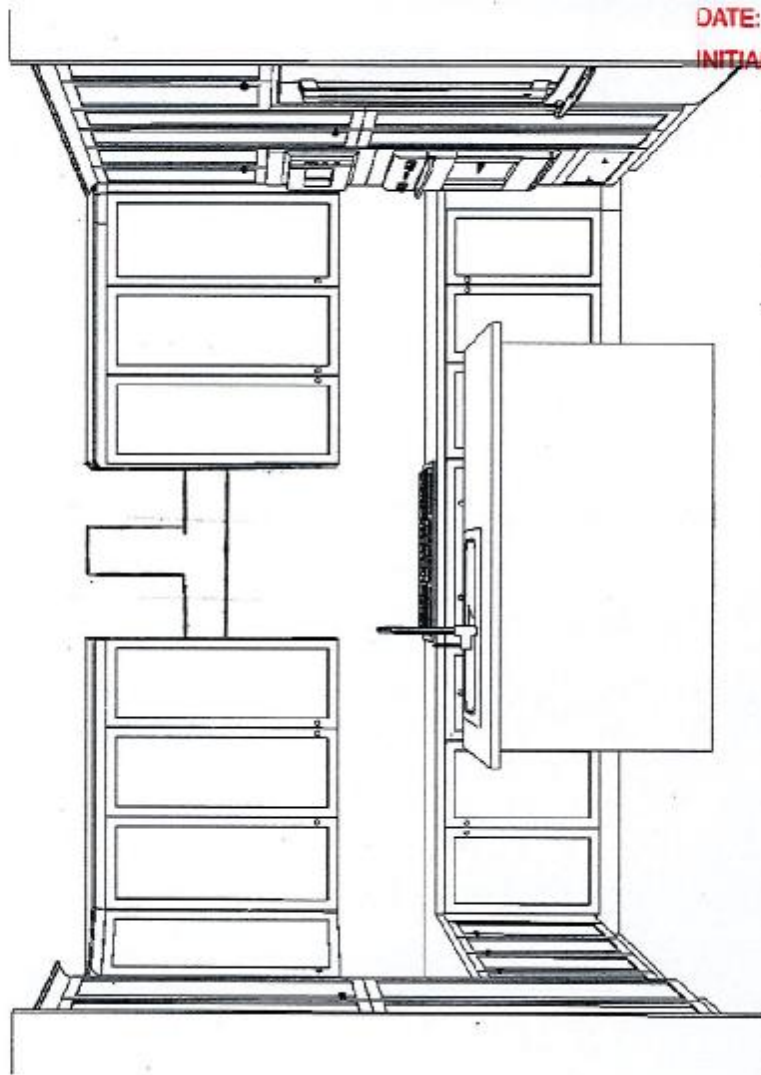
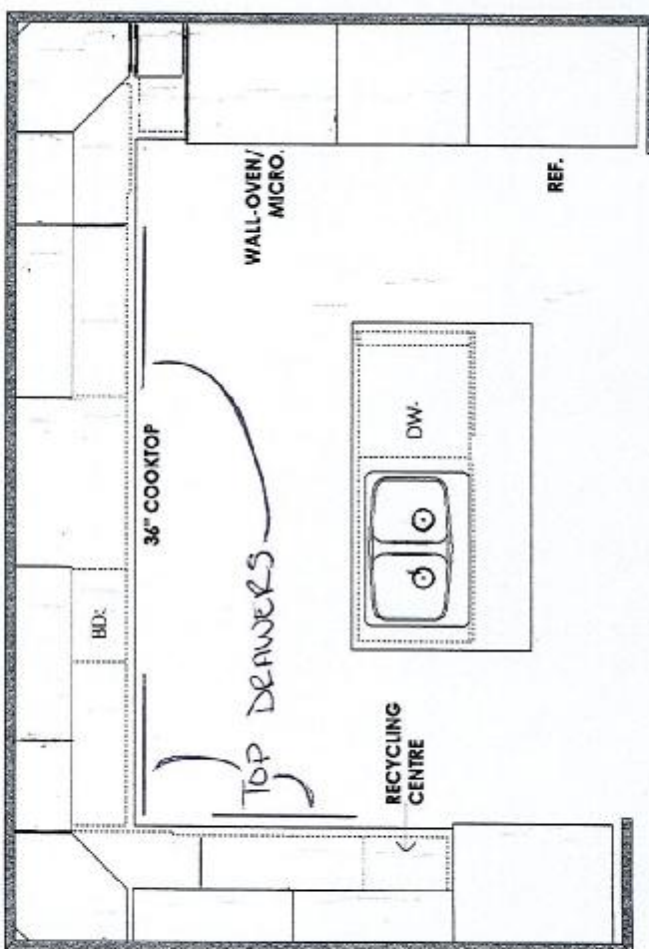
Renderings are artist's concept. Some elevations may vary from that shown. Actual useable square footage may vary from that stated herein. Some floorplans and elevations are mirror image to that shown. E&O.E. 23-1



FRENDEL
KITCHENS LIMITED

1350 Shawson Drive, Mississauga, ON L4W 1C5

Tel: (905) 670-7699
Fax: (905) 676-1986
www.frendel.com



*120cm Extended
Uppers w Crown*

SENATOR HOMES
DECOR CENTRE

DATE: MAR 12 2016

INITIALS: cl. J

FEBRUARY 2016

SENATOR HOMES
TEEFY DEV
LOT 23 (ALLERTON - TH-23-1)

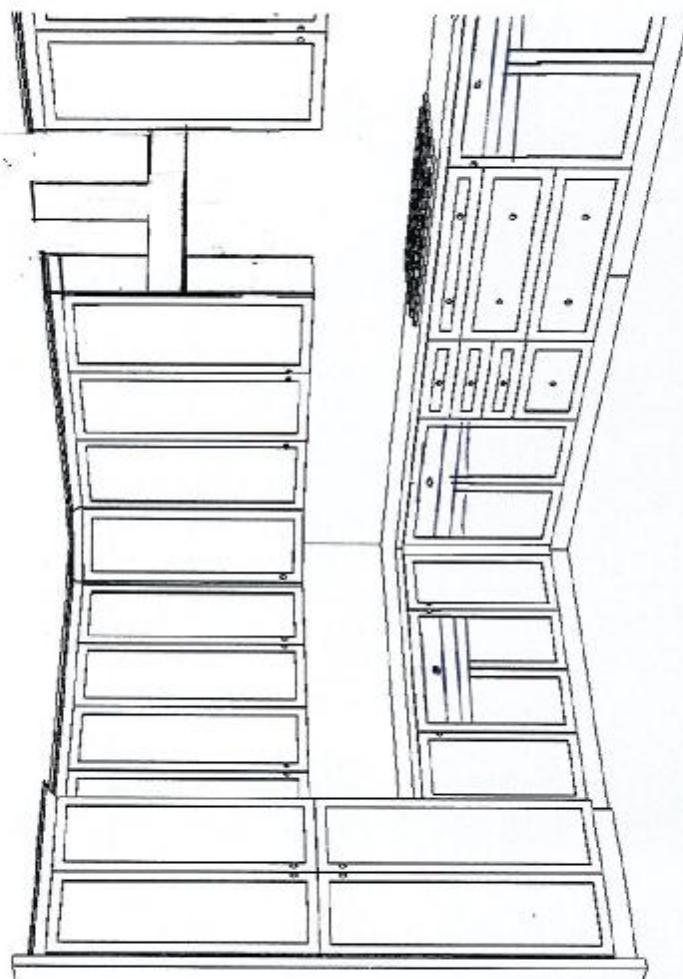
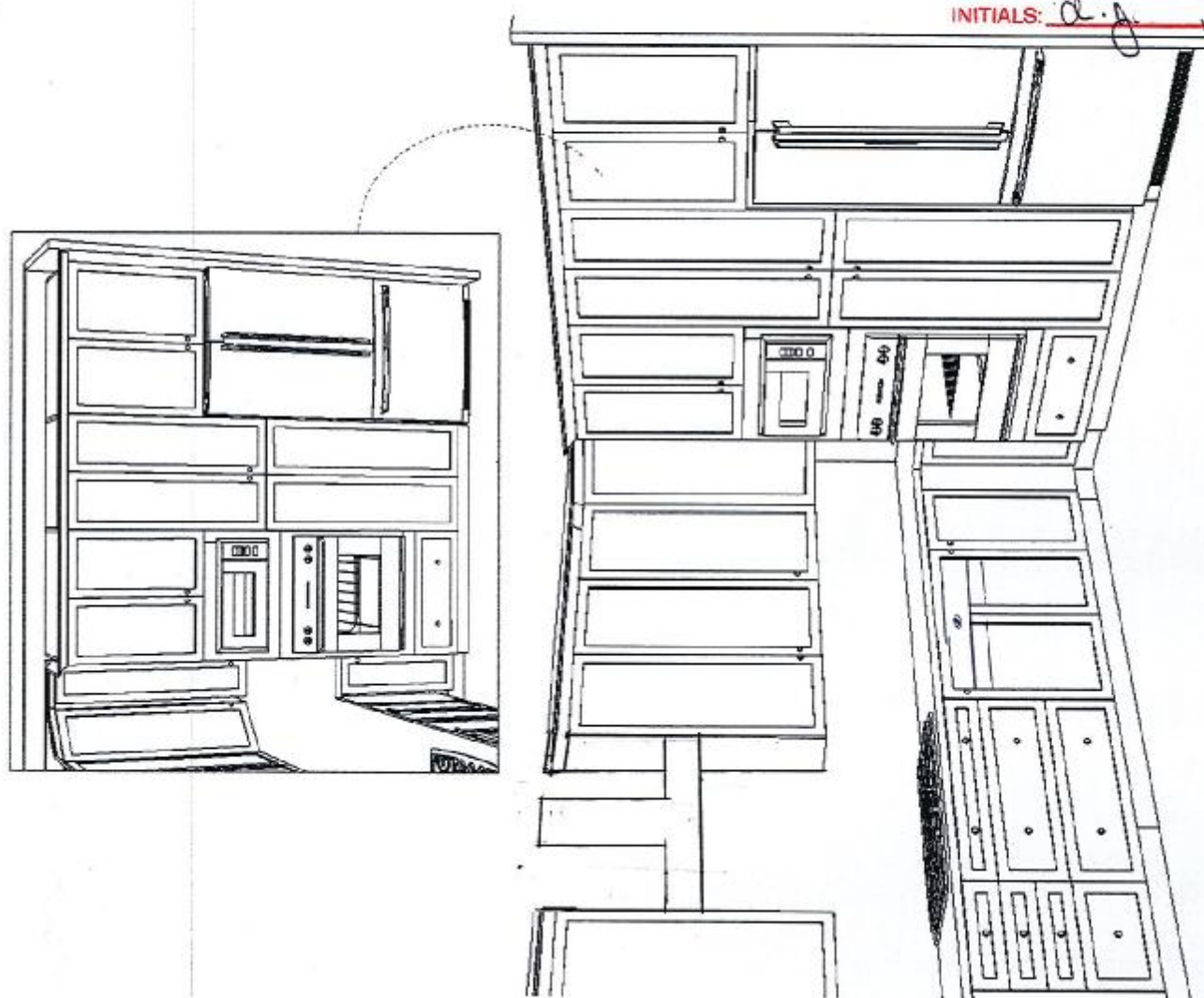
*120cm Extended
UPPERS W CROWN.

9130-23

SENATOR HOMES
DECOR CENTRE

DATE: MAR 12 2016
INITIALS: d.j.

FEBRUARY 24, 2016



Tel: (905) 470-7896
Fax: (905) 470-1986
www.frendel.com



FRENDEL
KITCHENS LIMITED
1350 Shawson Drive, Mississauga, ON L4W 1G3

SENATOR HOMES
TEEFY DEV
LOT 23 (ALLERTON - TH-23-1)

DATE: MAR 12 2016

INITIALS: cl-j

Electrolux | ICON®

French Door Refrigerator

E23BC68JPS professional series



Custom Temp Drawer™

Enjoy the ultimate in versatility with 9 preset selections including White/Sparkling Wine, Fish/Shellfish, Cheese plus three customizable settings that ensure foods stay at the ideal temperature for serving and maintaining freshness.



Custom-Design™ Organization System

With our flexible Tri-Level freezer organization system you can keep your freezer well organized. The three Smooth-Glide™ baskets with removable dividers and top removable baskets allow you to configure the space to neatly fit large and small items.



Theatre Lighting

Transition LED lighting gradually illuminates the interior with soft but ample light as you open the door.



PureAdvantage® Filtration Systems

Our filtration system keeps clean, filtered air circulated throughout to prevent odor transfer and keeps fresh, clean water and ice at your fingertips.

23 CU.FT. COUNTER-DEPTH FRENCH DOOR REFRIGERATOR

CAPACITIES	
Total Capacity	22.6 Cu. Ft.
Fresh Food Volume	15.7 Cu. Ft.
Freezer Volume	6.9 Cu. Ft.
Total Shelf Area	28.45 Sq. Ft.
Fresh Food Shelf Area	18.72 Sq. Ft.
Freezer Shelf Area	7.7 Sq. Ft.

EXTERIOR	
Professional Doors and Handle Design	Yes
Custom-Set™ Electronic Controls	Yes
Door Hinge Covers	Yes

FRESH FOOD CONVENIENCES	
PureAdvantage® Water & Ice / Air Filtration	Yes
Water Filter Location	Bottom Left
Temp Alarm System / Door Alarm / Power Failure Alarm	Yes
Custom-Design™ Glass Shelves	4 Half Width
Smooth-Glide® Humidity-Controlled Left Crisper	Yes
Smooth-Glide® Humidity-Controlled Right Crisper	Yes
Custom Temp Drawer™	Yes
Wine Rack	Yes
Clear Gallon Adjustable Door Bins	2
Clear 1/2-Gallon Adjustable Door Bins	3
Locking Clear Utility Bin	Yes
Tilt-Out Can Racks	2
Theatre Ramp-Up Multilevel Lighting – LED	Yes

FREEZER CONVENIENCES	
Automatic Ice Maker	Yes
Ice Maker On/Off	Yes
Fast Ice™	Yes
Self-Closing Drawer	Yes
Siding Freezer Baskets	2 Full-Width Smooth-Glide® (with Dividers) 1 Half-Width
Plastic Basket Tray	1
Tilt-Out Wire Door Racks	1
Theatre Ramp-Up Multilevel Lighting – LED	Yes

ADDITIONAL FEATURES	
ENERGY STAR®	Yes
Subzero Mode (Star-K® Certified)	Yes

ACCESSORIES	
Coiler Kit – PN# 50K23CDS*	Optional
Louvered Trim Kit – PN# 241723001*	Optional
Water Filter Replacement Cartridge – PN# EWFO1	Optional
Air Filter Replacement Cartridge – PN# EAFCBF	Optional

SPECIFICATIONS	
Product Dimensions –	
Height (with Hinges and 3/8" Rollers)	69-1/2"
Cabinet Width/Door Width	35-5/8"/36"
Depth (Including Handle)	25-1/2"
(with 50" Doors Open)	42-9/16"
(with Drawer Fully Extended)	44-1/2"
Power Supply Connection Location	Right Bottom Rear
Water Inlet Location	Left Bottom Rear
Voltage Rating	120V/60Hz/15 or 20A
Connected Load (kW Rating) @ 120 Volts†	1.02
Minimum Circuit Required (Amps)	15
Shipping Weight (Approx.)	348 Lbs.

*For detailed Louvered Trim Kit and Coiler Kit installation instructions, refer to Product Installation Guides on the web at electroluxicon.ca.

†An electrical supply with grounded three-prong receptacle is required. The power supply circuit must be installed in accordance with current edition of National Electrical Code (NEC 90) and local codes & ordinances.

NOTE: Always consult local and national electric and plumbing codes. Refer to Product Installation Guide for detailed installation instructions on the web at electroluxicon.ca. Specifications subject to change.

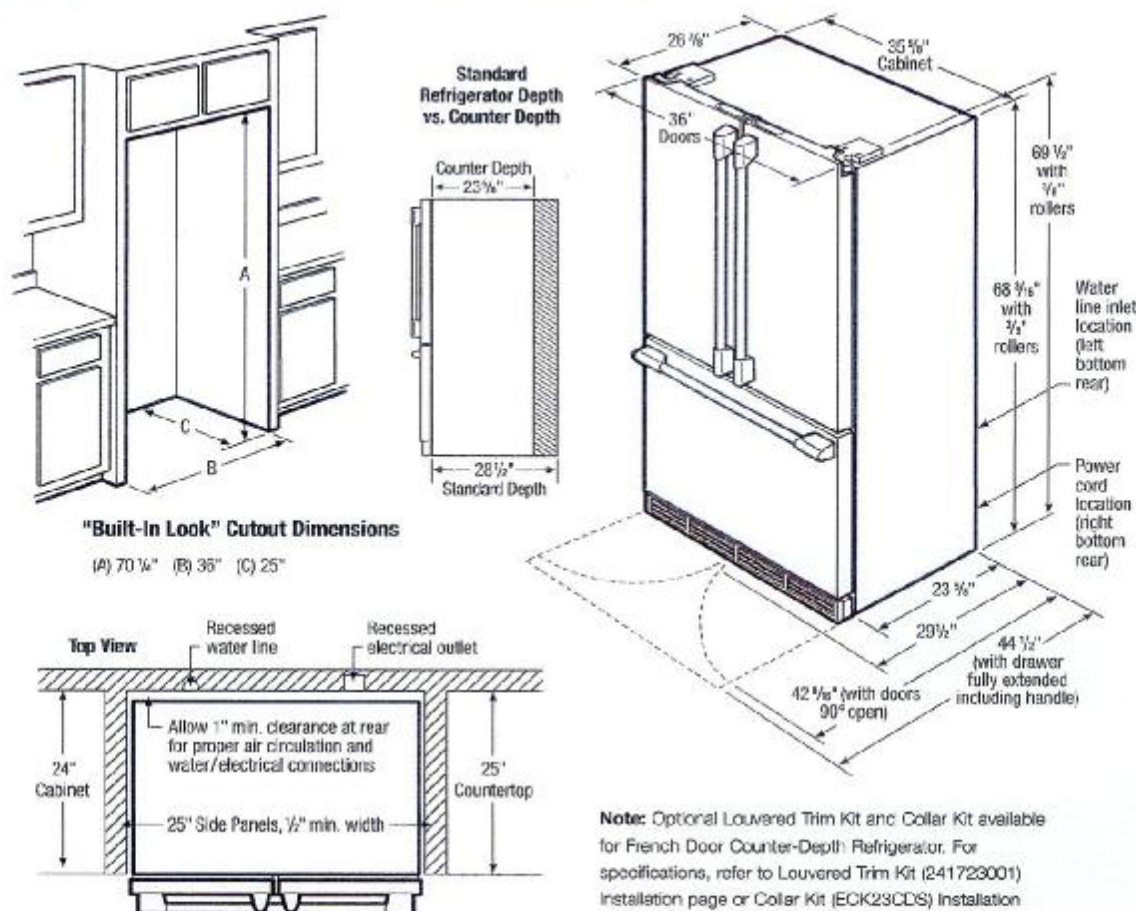
DATE: MAR 12 2016

INITIALS: A. J.

French Door Refrigerator

E23BC56JPS professional series

Electrolux **ICON®**



Counter-Depth French Door Refrigerator Specifications

- Product Weight – 338 Lbs.
- An electrical supply with grounded three-prong receptacle is required. The power supply circuit must be installed in accordance with current edition of National Electrical Code (NFPA 70) and local codes & ordinances.
- Voltage Rating – 120V/60Hz/15 or 20 Amps
- Connected Load (kW Rating): @ 120 Volts = 1.02 kW
- Amps @ 120 Volts = 8.5 Amps
- Always consult local and national electric & plumbing codes.
- Floor should be level surface of hard material, capable of supporting fully loaded refrigerator.
- When installing refrigerator adjacent to wall, cabinet or other appliance that extends beyond front edge of unit, 20" minimum clearance recommended to allow for optimum 120° to 180° door swing, providing complete drawer/crisper access and removal. (Absolute 4-1/2" minimum clearance will ONLY allow for 90° door swing which will provide drawer/crisper access with restricted removal.)
- To ensure optimum performance, avoid installing in direct sunlight or close proximity to range, dishwasher or other heat source.
- For proper ventilation, front grille MUST remain unobstructed.
- Recess electrical outlet when possible.
- Water recess on rear wall recommended to prevent water line damage.
- Water Pressure – Cold water line must provide between 30 and 100 pounds per square inch (psi).

- Copper tubing with 1/4" O.D. recommended for water supply line with length equal to distance from rear of unit to household water supply line plus 7 additional feet. Optional Water Supply Installation Kits available.
- Adjustable front rollers to assist with door alignment.
- If optional Collar Kit (PN# ECK23CDS) is to be used, different cutout dimensions are required. (Refer to Collar Kit ECK23CDS Installation Specifications page on web.)
- If optional Louvered Trim Kit (PN# 241723001) is to be used, different cutout dimensions are required. (Refer to Louvered Trim Kit 241723001 Installation Specifications page on web.)

"Built-In Look" Specifications

- Minimum opening of 70-1/4" H x 36" W x 25" D required to allow for ease of installation, proper air circulation, and plumbing/electrical connections.
- Remove all wall/floor molding prior to installation.

Note: For planning purposes only. Refer to Product Installation Guide on the web at electroluxicon.ca for detailed instructions.

Optional Accessories

- Collar Kit – (PN# ECK23CDS).
- Louvered Trim Kit – (PN# 241723001).
- PureAdvantage® Water Filter Replacement Cartridge – (PN# EWFD1).
- PureAdvantage® Air Filter Replacement Cartridge – (PN# EAFCBF).



Electrolux Major Appliances, N.A.

CANADA • 5855 Terry Fox Way • Mississauga, ON L5V 3E4 • 1-800-265-8352 • electroluxicon.ca

E23BC56LPS 01/12

© 2012 Electrolux Major Appliances, N.A.

High standards of quality at Electrolux Major Appliances, N.A. mean we are constantly working to improve our products. We reserve the right to change specifications or discontinue models without notice.

Printed in Canada

9130-23

SENATOR HOMES
DECOR CENTRE

DATE: MAR 12 2016

INITIALS: *cl. j.*



Electrolux | ICON®

Built-In Dishwasher

professional series

E24ID74QPS



PRODUCT DIMENSIONS

Height	33-3/4" - 35-3/4"
Width	23-3/4"
Depth	24-1/4"

MORE EASY-TO-USE FEATURES

IQ-Touch™ Controls

For those who like to have their options always visible on their dishwasher, the IQ-Touch™ control panel displays all of your options, at all times.

Easy-Lift Adjustable Racks

Versatile racking system easily adjusts to provide the perfect place for all your dishware — no pinching, pulling, or toggling required.

Auto Wash Feature

A Smart Soil Sensor technology that determines how long the wash cycle should run, for a more effective operation.

AquaLux™ Wash System

A unique washing system that uses alternating wash arms, for a quieter and more efficient operation.

Luxury Soft Grip Racks

Luxury Soft Grip Racks hold plastics and dishware in place, and prevent flipping, for a more thorough clean.

Perfect Stemware™ Grips

Six flexible grips gently hold stemware and other delicate items for a secure wash, every time.

Luxury-Glide® Racks

With our Luxury-Glide® technology, upper and lower racks are so smooth they extend effortlessly.

Sure-2-Fit® Racking System

The most versatile and adjustable racking system — there's a perfect place for over 180 items, from chopsticks to stockpots to stemware. In its lowest position, you can fit 10" dinner plates in the top rack and 12" dinner plates in the bottom.

More Cycles

With up to ten cycles — including Heavy, Normal, Fast Wash, Auto, Upper Rack Only, Eco Wash, Stemware, Rinse Only, Delicate, and "My Favorite" — you can choose the perfect wash for any occasion.

"My Favorite" Settings

A programmable setting that lets you customize the wash for your unique cleanup needs.

Signature Features



30-Minute Fast Wash Cycle

Quick Wash Cycle allows you to thoroughly wash dishes in half the time.



SatelliteSpray™ Arm

An innovative rotating wash zone gives you 400% more water coverage, targeting virtually every spot in your dishwasher for a truly professional-level clean.



Largest Usable Capacity

Largest usable capacity in its class, so even your dinner party dishware fits.



Perfect Stemware™ Cycle

Ensures your stemware comes out spotless and clean.

electroluxicon.com

9130-23

**SENATOR HOMES
DECOR CENTRE**

DATE: MAR 12 2016

INITIALS: cl-j

Built-In Dishwasher

E24ID74QPS professional series



Electrolux | I C O N[®]

BUILT-IN DISHWASHER

FEATURES

Stainless Steel Interior	Yes
Luxury-Hold™ Door	Yes
Custom-Get™ Options	Yes
Theatre LED Lighting	Yes
Integrated IQ-Touch™ Controls	Yes
LED Indicator Lights	Yes
Tall-Tub Design	Yes
ProClean™ Wash System	Yes
SatelliteSpray™ Arm	Yes
Luxury-Clean™ Technology	Yes
Luxury-Quiet™ Sound Package (Approx. dBA)	Yes/43.0
Wash Levels	5
Aqua-Lux™ Wash System	Yes
Leak-Detection System	Yes
Adjustable Rinse Aid Dispenser with Indicator	Yes
ENERGY STAR®	Yes

CYCLES

Auto Wash	Yes
Delicate	Yes
Eco Wash	Yes
Favourite	Yes
Heavy	Yes
Normal	Yes
Perfect Steamware™	Yes
30-Min. Fast Wash	Yes
Rinse Only	Yes
Upper Rack	Yes

OPTIONS

Air Dry	Yes
NSF® Certified Sanitize Option	Yes
Delay Start	30 Min. – 24 Hrs.

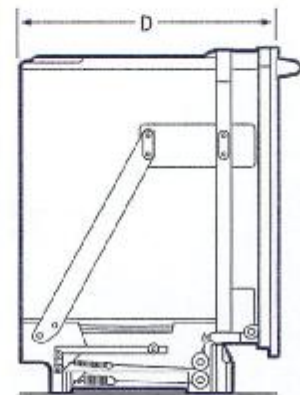
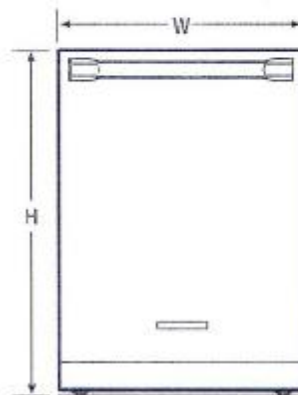
RACK SYSTEM

Bone-2-Flt® Rack System	Yes
Upper Rack –	
Adjustable Height	Yes
Cup Clips	4
Cup Shelf/Stemware Holder	2/Yes
Fold-Down Trays	4 Rows
Rack Handle	Yes
Versa-Tray™	Yes
Lower Rack –	
Fold-Down Trays	6 Rows
Knife Holder	Yes
Utility Tray/Shelf	Yes
Stemware/Champagne Glass Holders	4
Silverware Basket	3-Piece Split
Soaps Items Cover/Mesh Small Items Bag	Full Set

SPECIFICATIONS

Power Supply Connection Location	Right Bottom Front
Water Inlet Location	Left Bottom Front
Leveling Legs	Yes
Water Usage (Saline) – Normal Cycle	4.0 – 8.0
Water Pressure (PSI)	15 – 120
Integral Air Gap on Supply	Yes
Voltage Rating	120V/60Hz
Connected Load (kW Rating) @ 120 Volts†	1.44
Amps @ 120 Volts	9.0
Shipping Weight (Approx.)	115 Lbs.

†For use on adequately rated (120V, dedicated circuit having 2-wire service with a separate ground wire. Approval must be obtained for safe operation.
NOTE: Always consult local and national codes and plumbing codes. Refer to Proper Installation Guide for detailed installation instructions on the web at electroluxicon.com.
Specifications subject to change.



PRODUCT DIMENSIONS

Height (Adjustable)	33-3/4" – 35-3/4"
Width	23-5/8"
Depth (Including Door)	24-1/4"
(with Door 90° Open)	20-1/4"

Electrolux Major Appliances, N.A.

USA • 10200 David Taylor Drive • Charlotte, NC 28262 • 1-877-4electrolux (1-877-435-3287) • electroluxicon.com
CANADA • 5855 Terry Fox Way • Mississauga, ON L4V 3E4 • 1-800-265-8352 • electroluxicon.ca

E24ID74QPS 01/15

© 2015 Electrolux Home Products, Inc.



High standards of quality at Electrolux Home Products, Inc. mean we are continually working to improve our products. We reserve the right to change specifications or discontinue models without notice.

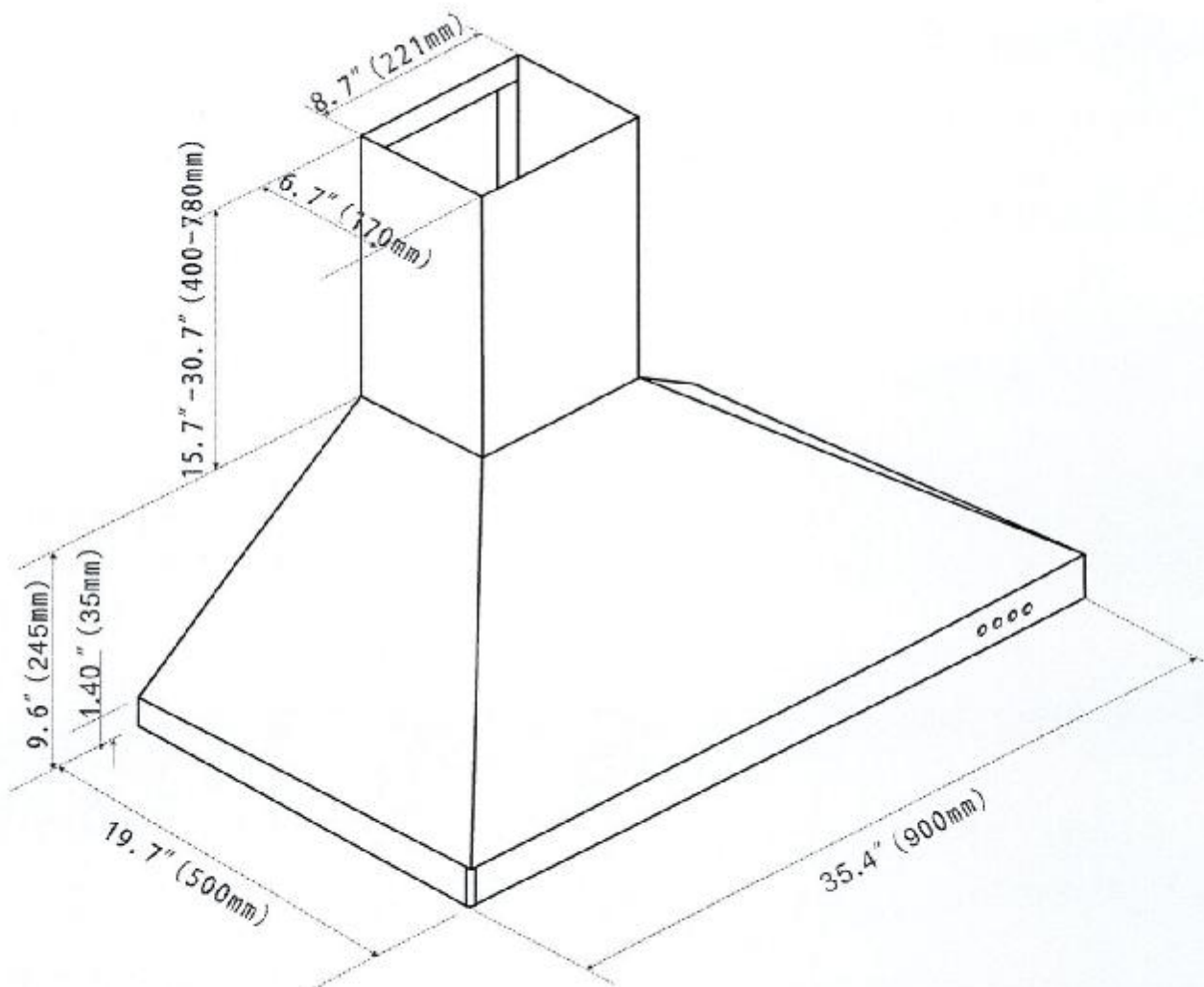
9130-23

SENATOR HOMES
DECOR CENTRE

DATE: MAR 12 2016

INITIALS: a.f. f

ANCONA
RAPIDO 36



9130-23

**SENATOR HOMES
DECOR CENTRE**

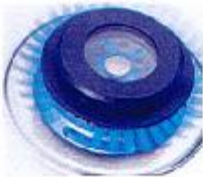
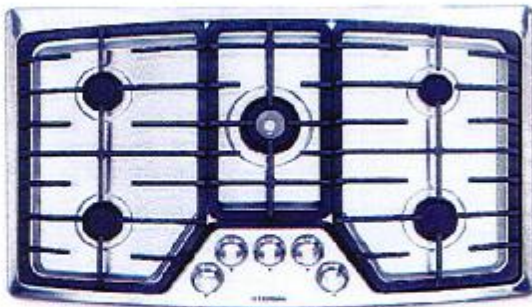
DATE: MAR 12 2016

INITIALS: A-J J



Gas Cooktops

EW36GC55G S, EW36GC55G W, EW36GC55G B



Min-2-Max Burner®

Designed with a dual-flame sealed burner, this cooktop offers the widest range of BTU performance in the industry for the utmost versatility—from a roaring 18,000-BTU boil to a gentle 450-BTU simmer.



Continuous Grates

Designed for cooking multiple dishes at varying temperatures on a single cooktop. These grates allow easy movement of even the heaviest pots and pans from burner to burner—without lifting.



Professional-Grade Control Knobs

Eliminate guesswork while cooking with more precise control and better feel.



Deep-Well Design

Keeps spills contained for easy cleanup and lowers the cooking surface to countertop level, which makes moving oversized pots and pans onto and off of the cooking surface much easier.

36" GAS COOKTOPS

Features	
Deep-Well Formed Cooktop	Yes
Professional-Grade Burner Controls	Yes
Continuous Grates	Yes
Min-2-Max Dual-Flame Sealed Burner* – 18,000–450 BTU	1
Sealed Power Burner – 14,000 BTU	1
Sealed Precision Burner – 9,500 BTU	2
Sealed Precision Burner – 5,000–850 BTU	1
Linear Flow Burner Valves	Yes
Electric Pilotless Ignition	Yes
A.D.A. Compliant**	Yes
Accessories	
Granite Countertop Installation Kit – P/N# 303100-3010	Optional
Grill/Griddle – P/N# 318251600	Mail-In Card
Wok Ring – P/N# 318254307	Optional
Simmer Plate – P/N# 318254208	Optional
LP Gas Conversion Kit	Included
Specifications	
Color –	
Stainless Steel	S
White	W
Black	B
Product Dimensions –	
Width	36"
Depth	21-3/4"
Height (Extreme Bottom to Underside of Cooktop)	4-1/4"
Gas/Power Supply Connection Location	Right Rear
Voltage Rating	120V/60 Hz/15A
Connected Load (kW Rating) @ 120 Volts†	6.12
Electrical Cable	Yes
Approved for Single Oven Combination Installation**	Yes
Shipping Weight (Approx.)	64 Lbs.

*When properly installed, meets the appliance standards in the Americans with Disabilities Act and the Architectural Barriers Act Accessibility Guidelines as published by the United States Access Board on June 23, 2004, as amended August 5, 2005.

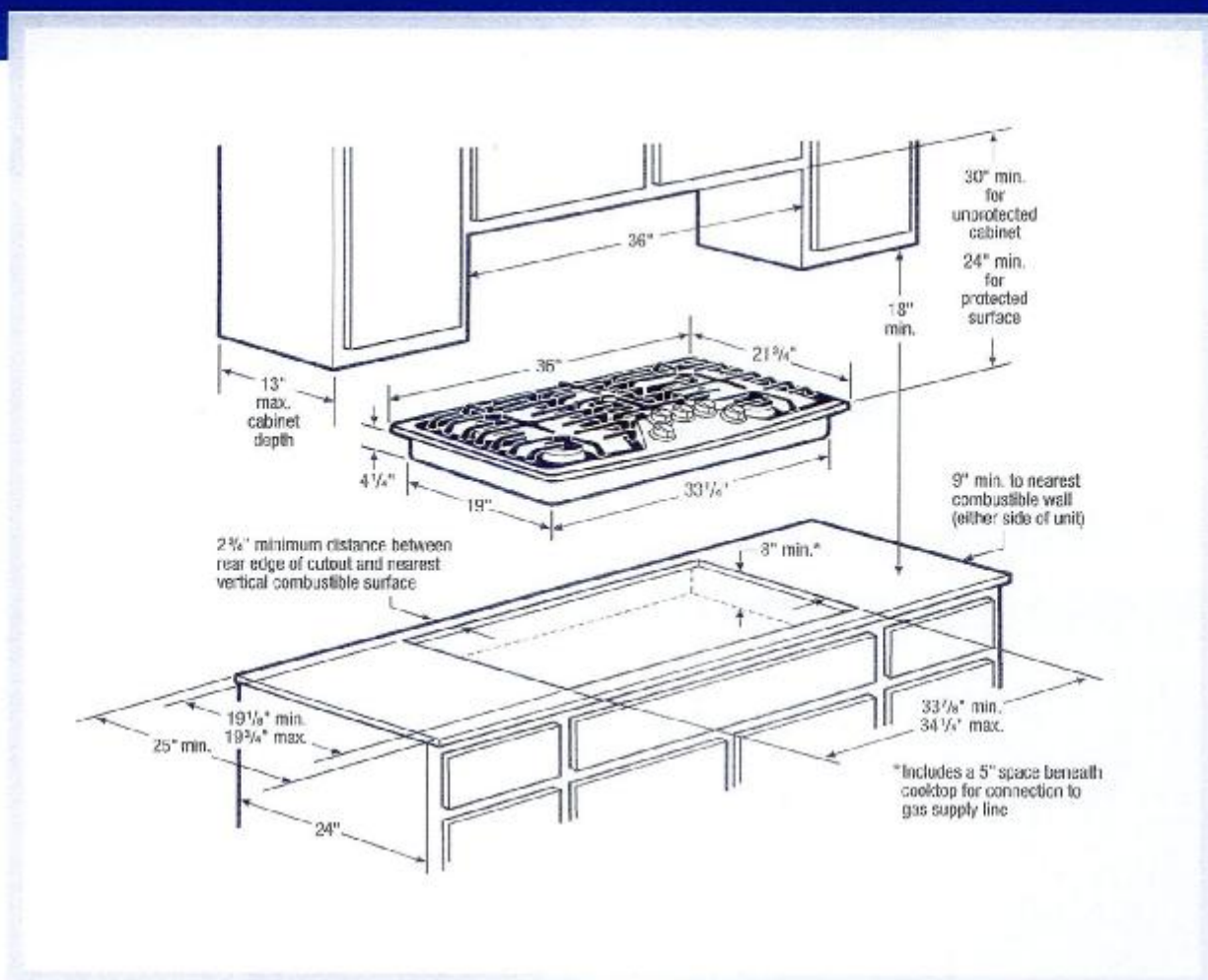
†For use an independent wired 120V, dedicated circuit having 2-wire service with a separate ground wire. Appliance must be grounded for safe operation.
 ‡AC15: Always consult local and national electric and gas codes. Refer to Product Installation Guide for detailed installation instructions on the web at electroluxappliances.com.
 Specifications subject to change.

**Approved to be used over any Electrolux Single Wall Oven.

electroluxappliances.com

DATE: MAR 17 2016
INITIALS: af J

EW36GC55G S, EW36GC55G W, EW36GC55G R



- Product Weight – 53 Lbs.
- Voltage Rating – 120V/60Hz/15 Amps
- Connected Load (kW Rating) @120 Volts = 0.12 kW (For use on adequately wired 120V, dedicated circuit having 2-wire service with a separate ground wire. Appliance must be grounded for safe operation.)
- Amps @120 Volts = 1.0 Amps
- Always consult local and national electric and gas codes.
- Recommended location for grounded 120V outlet is on rear wall in an 8" wide by 10" high area, positioned 22" above floor surface and 4" from right side of cooktop centerline. Access to underside of cooktop and junction box must be provided for inspection and service.
- Cooktop ships with 3/4" factory regulator.
- LP Gas conversion kit supplied.
- Overhead cabinetry should not exceed a 13" maximum depth.
- Allow 30" minimum clearance between top of cooktop and bottom of unprotected wood or metal overhead cabinetry.
- Absolute minimum horizontal distance between overhead cabinets installed to either side of appliance must be no less than 36".
- Allow 24" minimum clearance when bottom of wood or metal overhead cabinet is protected by not less than 1/8" flame-retardant millboard covered with not less than No. 28 MSG sheet steel, 0.015" stainless steel, 0.024" aluminum or 0.020" copper.

- Allow 2-3/4" minimum distance between rear edge of cutout and nearest combustible surface above countertop.
- Allow 9" minimum clearance from edge of cooktop to nearest combustible wall on either side of unit.
- Installation of drawers beneath cooktop requires minimum 6-1/2" clearance beneath countertop surface and assured clearance for gas and electrical connections.
- To reduce risk of fire when using overhead cabinetry, install range hood that projects horizontally a recommended minimum of 5" beyond bottom of cabinets.
- Gas Cooktop model EW36GC55G is approved to be used over any Electrolux Electric Single Wall Oven. (Refer to Gas Cooktop Installation Over 30"/27" Electric Single Wall Oven Specifications page on web.)

Note: For planning purposes only. Refer to Product Installation Guide on the web at electroluxappliances.com for detailed instructions.

Optional Accessories

- Granite Countertop Installation Kit – (PN# 903103-9010).
- Simmer Plate – (PN# 318254208).
- Wok Ring – (PN# 318254307).

USA • 10200 David Taylor Drive • Charlotte, NC 28262 • 1-877-4electrolux (1-877-435-3287) • electroluxappliances.com
CANADA • 5855 Terry Fox Way • Mississauga, ON L5V 3E4 • 1-800-285-8352 • electroluxappliances.ca

EY360C59G 02/13

© 2013 Electrolux Home Products, Inc.



High standards of quality at Electrolux Home Products, Inc. mean we are constantly working to improve our products. We reserve the right to change specifications or discontinue models without notice.

Overview

Specifications

Accessories

Reviews

Support

ADD TO CART



30" Trim Kit for select Microwaves NN-TK932SS
NN-TK932SS

3.5 | 4 Reviews | Write a review

In Stock Ships In 1-3 Business Days

Features

30" Wide Trim Kit for select Panasonic Microwave Ovens

\$219.95 \$168.95

Qty

1

ADD TO CART

Add a Protection Plan Details +

Select a Plan

ADD TO REGISTRY

Specifications Collapse All

More Details

Compatible Models	NN-SE982S, NN-SD997S, NN-SD962S
TRIM KIT OUTER SIZE	
Side A	18-9/16"
Side B	30"
TRIM KIT INNER SIZE	
Side C	24-5/8"
Side D	13-11/16"
CABINET OPENING	
Side E	28-1/2"
Side F	17-3/8"
Side G	21" minimum
UPC	885170073104

Accessories

Featured



2.2 Cu. Ft.
Countertop/Built-
In Microwave
with Inverter
Technology NN-
SD972S Stainless
NN-SD972S
In Stock
\$264.95 \$222.99

4.0 (4 Reviews)

ADD TO CART



Microwave Ovens Countertop
Countertop NN-SE992

9130-23
SENATOR HOMES
DECOR CENTRE
 DATE: MAR 12 2016
 INITIALS: cl A A

Model Number		NN-SE992S
Type		Full-size
Capacity		2.2 cu.ft.
Technology		Inverter [®]
Power	Microwave	1,200 W
	Grill	NA
	Grill Power Level	NA
	Convection	NA
Combination	Microwave + Grill	NA
	Power Level	NA
Design	Colour	Stainless Steel (Fingerprint Proof)
	Dial / Button	Electrostatic Dial w / blue ring
	Door Release	Push Open
	Finish	Half Mirror
Control Panel	Panel Design	Electrostatic Dial + Buttons
Display	Type	6 Digit LCD
	Colour	Blue
	Back Light	yes
Power Level + Other.	Power Level	10
	Delay Start	yes
	Clock	12 Hour
	Child Lock	yes
	Stage Cooking	3 Stage
Menu	Sensor	yes
	Turbo Defrost	yes
	Popcorn	yes
	Keep Warm	yes (up to 30 minutes)
	Quick Min	yes (up to 10 minutes)

9130-23

SENATOR HOMES
DECOR CENTRE

DATE: MAR 12 2016

INITIALS: a-j

	Auto Reheat	Sensor Reheat
	# of Auto Cook Categories	15
Turntable Size		420 mm
Accessory		Glass Tray
Trim Kit		NNTK922 / 932S
Power Source		120 V / 60 Hz
Power Consumption	Microwave	1,460 W
	Grill	NA
	Combination	NA
Cooking Power	Microwave	1,200 W
	Grill	NA
Dimensions	Outside (H × W × D)	356 × 606 × 497 mm
	Oven (H × W × D)	278 × 469 × 470 mm
Weight	Net	16.7 kg
	Shipping	19.0 kg

NOTE Specifications are subject to change without notice.

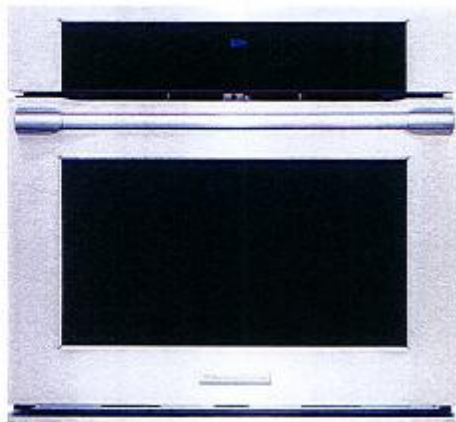
Copyright ©Panasonic Canada Inc.



Single Wall Oven

professional series

E30EW75PPS



PRODUCT DIMENSIONS

Height	29"
Width	30"
Depth	24-3/4"

MORE EASY-TO-USE FEATURES

Large Capacity

Coordinate an entire meal — our ovens feature 4.8 cu. ft. of cooking space with three adjustable baking racks.

Flat Oven Door Design

Our unique flat oven door is sleekly designed with fewer bumps and ridges — so it not only looks great but is easier to clean.

Smooth-Glide® Oven Racks

With a ball bearing system, the oven racks are so smooth they extend effortlessly.

Rapid Preheat

Savor sooner, with Rapid Preheat.

Precise Baking Options

Includes Defrost, Dehydrate, Bread Proof, My Favorites, Multi-Stage Cooking, Temperature Probe, Fast Preheat, Delay Bake and Convection Convert.

Platinum Star® Limited Warranty

Our exclusive limited warranty that includes a 3-year coverage on parts and one year on labor without charge*.

A.D.A. Compliant

When properly installed, this model is A.D.A.-qualified based on the United States Access Board's A.D.A./A.B.A. Accessibility Guidelines and the Department of Justice's 2010 A.D.A. Standards for Accessible Design.

Signature Features



Perfect Taste™ Dual Convection

For consistently delicious taste and texture, home chefs rely on our dual-fan convection heat, which circulates air evenly with two variable speeds that work in tandem with three heating elements.



Perfect Taste™ Temp Probe

The Perfect Taste™ Temp Probe does more than measure temperature — it keeps an active eye on your dishes by alerting you when food is at the peak of perfection and automatically adjusting to the Keep Warm setting.



Multi-Stage Cooking

Create great taste with ease. With Multi-Stage Cooking, an Electrolux ICON® oven is a built-in sous chef, helping you conquer delicious by adjusting between seven professionally inspired cooking modes, including Bake, Broil, Convection Bake, Convection Roast, Convection Broil, Keep Warm and Slow Cook.



Self-Cleaning Porcelain Racks

Bake, roast, broil, savor — the cleaning's on us. Our porcelain racks are safe to stay inside of the oven during the self-clean cycle, eliminating the mess and inconvenience of removing and cleaning racks by hand.

*Warranty based on product registration with Electrolux North America within 60 days of purchase.

electroluxicon.com

INITIALS: Al. J.

ICON

High standards of quality at Eutawville House Products, Inc. (803) 662-0000 are constantly evolving to improve our products. Your request may result in change specifications or quality control module software used.

9130-23

ELECTRIC WALL OVEN INSTALLATION INSTRUCTIONS

(and Optional Electric or Gas Cooktop Combination)

INSTALLATION AND SERVICE MUST BE PERFORMED BY A QUALIFIED INSTALLER.
 IMPORTANT: SAVE FOR LOCAL ELECTRICAL INSPECTOR'S USE.
 READ AND SAVE THESE INSTRUCTIONS FOR FUTURE REFERENCE.

United States
and Canada



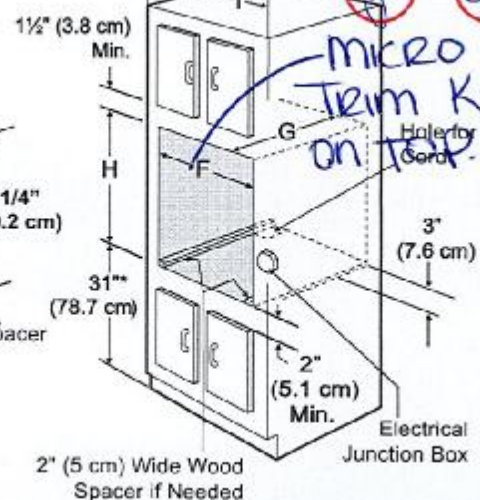
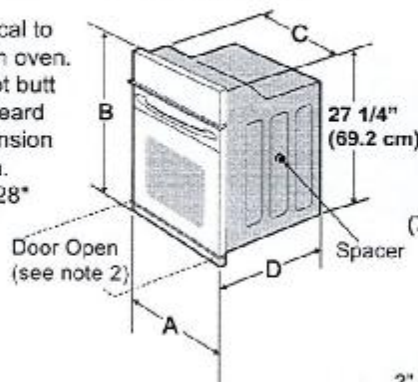
WARNING FOR YOUR SAFETY: Do not store or use gasoline or other flammable vapors and liquids in the vicinity of this or any other appliance.

Your new wall oven has been designed to fit a limited variety of cutout sizes to make the job of installing easier. The first step of your installation should be to measure your current cutout dimensions and compare them to the cutout dimensions chart below for your model. You may find little or no cabinet work being necessary.

WARNING Do not remove spacers (if equipped) on the side walls of the built-in oven. These spacers center the oven in the space provided. The oven must be centered to prevent excess heat buildup that may result in heat damage or fire.

NOTES:

1. Base must be capable of supporting 150 pounds (68 kg) for 27" models and 200 pounds (90 kg) for 30" models.
2. Allow at least 21" (53.3 cm) clearance in front of oven for door depth when it is open.
3. Dimension G (cutout depth) is critical to the proper installation of the built-in oven. If the oven decorative trim does not butt against the cabinet, or if noise is heard on convection models, verify dimension G to assure it is the required depth.
4. For a cutout height greater than 28" (71.1 cm) add one 2" (5 cm) wide wood shim of appropriate height to each side of the opening under the appliance side rails.
5. For a cutout height (H) greater than 28 3/8" (73 cm) you can order a larger bottom trim through a Service Center.



* Suggested distance from floor is 31" (78.7cm).
 Minimum required distance is 4 1/2" (11.4cm).

Figure 1
 27" and 30" Single Wall Ovens (Double ovens see Figure 2)

PRODUCT DIMENSIONS						
MODEL	A		B	C		D
27" (68.6 cm) Wall Oven	27 (68.6)		29 (73.7)	24 ⁵ / ₈ (62.5)		24 ³ / ₄ (62.9)
30" (76.2 cm) Wall Oven	30 (76.2)		29 (73.7)	28 ¹ / ₄ (71.8)		24 ³ / ₄ (62.9)
CUTOUT DIMENSIONS AND CABINET WIDTH						
MODEL	F		G (Min.)	H. Standard Height (**Others, see notes 4 & 5)		I
	Min.	Max.		Min.	Max.	
27" (68.6 cm) Wall Oven	24 ⁷ / ₈ (63.2)	25 ¹ / ₄ (64.1)	23 ¹ / ₂ (59.7)	27 ¹ / ₄ (69.2)	28 (71.1)	27 ¹ / ₄ (68.9) Min
30" (76.2 cm) Wall Oven	28 ¹ / ₂ (72.4)	29 (73.7)	23 ¹ / ₂ (59.7)	27 ¹ / ₄ (69.2)	28 (71.1)	30 ¹ / ₈ (76.5) Min

All dimensions are in inches (cm).
 Printed in USA

PN 807153703 Rev. B (1504)
 English - pages 1-8
 Español - páginas 9-16
 Français - pages 17-24

**SENATOR HOMES
 DECOR CENTRE**

DATE: APR 09 2016

INITIALS: *f* *ce*

ELECTRIC WALL OVEN INSTALLATION INSTRUCTIONS

(and Optional Electric or Gas Cooktop Combination)

Important Notes to the Installer

1. Read all instructions contained in these installation instructions before installing the wall oven.
2. Remove all packing material from the oven compartments before connecting the electrical supply to the wall oven.
3. Observe all governing codes and ordinances.
4. Be sure to leave these instructions with the consumer.
5. Oven door may be removed to facilitate installation.
6. THESE OVENS ARE NOT APPROVED FOR STACKABLE OR SIDE-BY-SIDE INSTALLATION.

Important Note to the Consumer

Keep these instructions with your Owner's Guide for the local electrical inspector's use and future reference.

IMPORTANT SAFETY INSTRUCTIONS

- Be sure your wall oven is installed and grounded properly by a qualified installer or service technician.
- This wall oven must be electrically grounded in accordance with local codes or, in their absence, with the National Electrical Code ANSI/NFPA No. 70-latest edition in United States, or with CSA Standard C22.1, Canadian Electrical Code, Part 1, in Canada.

⚠ WARNING Stepping, leaning or sitting on the door of this wall oven can result in serious injuries and can also cause damage to the wall oven.

- Never use your wall oven for warming or heating the room. Prolonged use of the wall oven without adequate ventilation can be dangerous.

⚠ WARNING The electrical power to the oven must be shut off while line connections are being made. Failure to do so could result in serious injury or death.

1. Carpentry

Refer to figure 1 or 2 for the dimensions applicable to your appliance, and the space necessary to receive the oven. The oven support surface may be solid plywood or similar material, however the surface must be level from side to side and from front to rear.

2. Adjusting Oven Height

Oven height can be adjusted with 2" (5cm) wide wood shims when needed to fit into an existing cabinet cutout opening, when cutout height exceeds 28" (71.1cm) for the single wall oven or 49 1/8" (124.8 cm) for the double wall oven (see Figure 1 or 2). Place shims of appropriate height beneath the oven side rails.

3. Electrical Requirements

This appliance must be supplied with the proper voltage and frequency, and connected to an individual, properly grounded branch circuit, protected by a circuit breaker or fuse. To know the circuit breaker or fuse required by your model, see the serial plate to find the wattage consumption and refer to table A to get the circuit breaker or fuse amperage.

Appliance Rating Watts 240V	Protection Circuit Recommended	Appliance Rating Watts 208V	Protection Circuit Recommended
Less than 4800W	20A	Less than 4100W	20A
4801W - 7200W	30A	4101W - 6200W	30A
7201W - 9600W	40A or 50A	6201W - 8300W	40A or 50A
9601W and +	50A	8301W and +	50A

Table A

Observe all governing codes and local ordinances

1. A 3-wire or 4-wire single phase 120/240 or 120/208 Volt, 60 Hz AC only electrical supply is required on a separate circuit fused on both sides of the line (red and black wires). A time-delay fuse or circuit breaker is recommended. DO NOT fuse neutral (white wire). Only certain cooktop models may be installed over certain built-in electric oven models. Approved cooktops and built-in ovens are listed by the MFG ID number (see the insert sheet included in the literature package).

NOTE: Wire sizes and connections must conform with the fuse size and rating of the appliance in accordance with the American National Electrical Code ANSI/NFPA No. 70-latest edition, or with Canadian CSA Standard C22.1, Canadian Electrical Code, Part 1, and local codes and ordinances.

⚠ WARNING An extension cord should not be used with this appliance. Such use may result in a fire, electrical shock, or other personal injury. If you need a longer power cord you can purchase a 10' (3 m) power cord kit #903056-9010 by calling the Service Center.

2. These appliances should be connected to the fused disconnect (or circuit breaker) box through flexible armored or nonmetallic sheathed cable. The flexible armored cable extending from the appliance should be connected directly to the junction box. The junction box should be located as shown in Figure 1 or Figure 2 and with as much slack as possible remaining in the cable between the box and the appliance, so it can be moved if servicing is ever necessary.
3. A suitable strain relief must be provided to attach the flexible armored cable to the junction box.

**SENATOR HOMES
DECOR CENTRE**

DATE: APR 09 2016
INITIALS: ft ch



INTERIOR COLOUR SCHEME

Purchasers: Cheryl Mae Lee & Jonathan Y-H Tam

Property: 23 of Plan -

Telephone Res. / Bus: (416) 320-4334 /

Project: Teefy Developments Limited

Decor Advisor: Nicole Soares

Model and Elevation: Allerton(23-1)

Layout Changes: ☒ Yes ☐ No

Sketch Attached: ☒ Yes ☐ No

Exterior Colour Scheme:

1. Cabinetry	Style and Colour	Counter Top	Hardware
Kitchen / Breakfast	OTTAWA PAINT: WINTER WHITE	9141 - SQ EDGE	9677
Kitchen Island	OTTAWA MAPLE: SOAPSTONE	9141 - SQ EDGE	9677
Laundry Room			
Powder Room	OTTAWA MAPLE: SOAPSTONE	9141 - SQ EDGE	171
Main Bathroom	OTTAWA MAPLE: SOAPSTONE	9141 - SQ EDGE	171
Master Ensuite Bathroom	OTTAWA MAPLE: SOAPSTONE	9141 - SQ EDGE	171
Second Ensuite Bathroom (If Applicable)			
Ground Floor Bath	OTTAWA MAPLE: SOAPSTONE	9141 - SQ EDGE	171

Appliances

Custom Size Fridge

☐ Yes ☒ No

Valance Lighting

☒ Yes ☐ No

Microwave / Range Hood

☒ Yes ☐ No

Cooktop / Rangetop

☒ Yes ☐ No

Built in Wall Oven

☒ Yes ☐ No

Slide-in Range

☐ Yes ☒ No

Comment

2. Flooring	Selection
Main Hall	SATIN FINISH GEN. - HOME OAK 4 5/8 INCH X 3/4 INCH NF: GRAPHITE
Back Hall	
Breakfast	
Laundry Room	REFLEX 13x13: EXPRESSO - TO BE INSTALLED WITH LINES HORIZONTAL TO INTERIOR DOOR
Kitchen	SATIN FINISH GEN. - HOME OAK 4 5/8 INCH X 3/4 INCH NF: GRAPHITE
Powder Room	NIAGARA FALLS 12x24: WHITE - TO BE INSTALLED WITH LINES VERTICAL TO INTERIOR DOOR
Main Bathroom	REFLEX 13x13: WHITE ***TO BE INSTALLED WITH LINES TO BE VERTICAL TO THE DOOR
Master Ensuite	NIAGARA FALLS 12X24: WHITE - TO BE INSTALLED VERTICALLY TO THE DOOR
Bathroom (If Applicable)	NIAGARA FALLS 12x24: WHITE - TO BE INSTALLED VERTICALLY TO THE DOOR
Mud Room	
Foyer	NIAGARA FALLS 12x24: WHITE - TO BE INSTALLED WITH LINES VERTICALLY TO PORCH DOOR
Living Room	SATIN FINISH GEN. - HOME OAK 3 5/8 INCH X 3/4 INCH NF: GRAPHITE
Dining Room	SATIN FINISH GEN. - HOME OAK 3 5/8 INCH X 3/4 INCH NF: GRAPHITE
Family / Great Room	
Den / Library / Study	
Basement Landing (If Applies	SATIN FINISH GEN. - HOME OAK 3 5/8 INCH X 3/4 INCH NF: GRAPHITE
Lower Landing (If Applicable)	SATIN FINISH GEN. - HOME OAK 3 5/8 INCH X 3/4 INCH NF: GRAPHITE
Upper Landing	SATIN FINISH GEN. - HOME OAK 3 5/8 INCH X 3/4 INCH NF: GRAPHITE
Upper Hall	SATIN FINISH GEN. - HOME OAK 3 5/8 INCH X 3/4 INCH NF: GRAPHITE
Master Bedroom	SATIN FINISH GEN. - HOME OAK 3 5/8 INCH X 3/4 INCH NF: GRAPHITE
Bedroom #2	SATIN FINISH GEN. - HOME OAK 3 5/8 INCH X 3/4 INCH NF: GRAPHITE
Bedroom #3	SATIN FINISH GEN. - HOME OAK 3 5/8 INCH X 3/4 INCH NF: GRAPHITE
Bedroom #4	
Bedroom #5	
Recreation Room	PAPILIO: SOFT CAMEO 17185

Flooring Continued on Page 2

Initial:



INTERIOR COLOUR SCHEME

Purchasers:

Cheryl Mae Lee & Jonathan Y-H Tam

Property: 23 of Plan -

Telephone Res. / Bus:

(416) 320-4334 /

Project: Teefy Developments Limited

Decor Advisor:

Nicole Soares

Model and Elevation: Allerton(23-1)

2. Flooring - Continued -

Upgrade Underpad	Type	Area
	STANDARD	RECREATION ROOM
Carpet on Stairs	Capped	Runner - *Upgrade
Comment		

3. Plumbing Fixtures / Faucets

Kitchen		Second Ensuite		Powder Room	
Master Ensuite				Other Room	
Main Bathroom		Ground Floor Bath			
Comment					

4. Wall Tile

	Tile Selection	Listello	Insert	Insert Selection
Main Bathroom	BRICK GLOSSY 8x10: WHITE	<input type="checkbox"/>	<input type="checkbox"/>	
Master Ensuite				
Tub Deck		<input type="checkbox"/>	<input type="checkbox"/>	
Tub Apron		<input type="checkbox"/>	<input type="checkbox"/>	
Tub Surround		<input type="checkbox"/>	<input type="checkbox"/>	
Shower Stall	PALMA 12x24: WHITE - TO BE INSTALLED HORIZONTAL	<input type="checkbox"/>	<input type="checkbox"/>	
Second Ensuite		<input type="checkbox"/>	<input type="checkbox"/>	
Ground Floor	WEAVE 8x10: WHITE	<input type="checkbox"/>	<input type="checkbox"/>	
		<input type="checkbox"/>	<input type="checkbox"/>	
Kitchen Backsplash		<input type="checkbox"/>	<input type="checkbox"/>	
Complete Backsplash		<input type="checkbox"/>	<input type="checkbox"/>	
Comment	MASTER ENSUITE SHOWER FLOOR- ONTARIO MATTE MOSAICS 2x2: DARK GREY			

5. Fireplace

	Living Room			Family Room			Other Room - Specify		
	Purchased	As Per Plan	N/A	Purchased	As Per Plan	N/A	Purchased	As Per Plan	N/A
Fireplace Type	<input type="radio"/>	<input checked="" type="radio"/>	<input type="radio"/>	<input type="radio"/>	<input type="radio"/>	<input type="radio"/>	<input type="radio"/>	<input type="radio"/>	<input type="radio"/>
Mantle Type	50" LINEAR ELECTRIC								
Over Mantle									
Colour / Stain									
Surround	STANDARD								
Hearth									
Comment									

Purchasers: Cheryl Mae Lee & Jonathan Y-H Tam

Property: 23 of Plan -

Telephone Res. / Bus: (416) 320-4334 /

Project: Teefy Developments Limited

Decor Advisor: Nicole Soares

Model and Elevation: Allerton(23-1)

6. Trim Carpentry

Door Hardware

Interior Trim

Comment

Interior Doors

☐ 2 Panel Arch Top

☒ 2 Panel Square Top

☐ 6 Panel



Initial for Door Style

Clf

7. Railings and Pickets

Railing Package

Railing Colour

Picket Colour

Wood Stairs ☐ No ☒ Oak

Tread Colour

Comment

STAINED TO MATCH SATIN FINISH GEN. - HOME OAK 3 5/8 INCH X 3/4 INCH NF. GRAPHITE AS MUCH AS POSSIBLE
*** PURCHASER IS AWARE STAIN WILL NOT BE A 100% TRUE MATCH

8. Plaster Mouldings and Medallions

Foyer

Main Hall

Living Room

Dining Room

Family Room

Kitchen/Breakfast

Den/Library

Lower Landing

Comment

9. Wall Paint

SENATOR WHITE

Smooth Ceilings

☐ First Floor

☐ First Floor incl. Second Floor Hall

☐ First and Second Floor

☒ Throughout

☐ Not Applicable

Trim Paint

10. Additional Comments

11. Disclaimers and Notes

- Colours of all materials are as close as possible to builder's selection, but not necessarily identical due to variances in manufacturing.
- Any extras listed above are null and void unless accompanied by a separate invoice/amendment. Said invoice must be paid in full.
- The Purchaser acknowledges that after Interior Colour Selection form is signed and dated, no further changes will be permitted other than re-selection due to unavailability. *Clf* Purchaser's Initials
- The Purchaser acknowledges reading and accepting the "Senator Homes Décor Centre Disclaimers" form. This document contains other miscellaneous disclaimers.

This Interior Colour Selection is final and approved by:

Purchaser:

Signature: *Cheryl Lee* Date: MAR 12 2016

Signature: *[Signature]* Date: MAR 12 2016

Vendor:

[Signature]
Teefy Developments Limited