

Sales Selection Sheet
Checklist

1 of 7

LOT 60 Model: 28-2409 C THE PINE

PURCHASERS: INVENTORY HOME_60/

VENDOR: Heathwood Homes (Williamsburg) Limited

COFFERED CEILING IN GREAT ROOM

- WOB
- DECK
- FINISHED LOWER LEVEL (STD)

UPGRADED / MODIFIED ELEVATION

- CORNER UPGRADE
- REAR UPGRADE
- SIDE UPGRADE

CEILING UPGRADE - SMOOTH

- MAIN FLOOR (SITE STD)
- SECOND FLOOR
- SECOND FLOOR UPPER HALLWAY ONLY
- FINISHED LOWER LEVEL

ADDITIONAL ROUGH-INS

- 200 AMP SERVICE (SITE STD)
- WET BAR ROUGH-IN
- HUMIDIFIER
- HEAT PUMP / AIR CONDITIONING (SITE STD)

GAS ROUGH-IN

- STOVE
- DRYER
- BBQ
- ADDITIONAL GAS FIREPLACE

KITCHEN HOODFAN VENTING SIZE

- 6 IN ROUND DUCT
- 7 IN ROUND DUCT

FULL LOWER LEVEL STAIRS	N/A
UPPER LOWER LEVEL STAIRS	All Oak
LOWER LOWER LEVEL STAIRS	Carpet Grade
MAIN STAIRS	All Oak

Sept 12/23 Date
UN SOLD INVENTORY Purchaser:

Sept 12/23 Date
MARILYN ROSEN Decor Consultant:

Date Purchaser:

-09-12-2023 Date Approved
M. Rosen Heathwood Homes (Williamsburg) Limited

Locked Date:



CONSTRUCTION SUMMARY

Lot: 60
Model: 28-2409 C THE PINE
Project/Phase: Williamsburg Green / 1

COFFERED CEILING

Invoice	Qty.	Description
1539 363,269 27Sep23	1	- COFFERED CEILING - OPT. COFFERED CEILING - GREAT ROOM - UPG DRYWALL-Notify; FRAMING-Notify; PAINTING-Notify

DRYWALL

Invoice	Qty.	Description
1539 362,765 27Sep23	1	- DRYWALL - SMOOTH CEILINGS - SECOND FLOOR HALLWAY ONLY - UPG ELECTRICAL-Drop electrical boxes; PAINTING-Paint smooth ceiling
1539 363,269 27Sep23 **	1	- COFFERED CEILING - OPT. COFFERED CEILING - GREAT ROOM - UPG DRYWALL-Notify; FRAMING-Notify; PAINTING-Notify
1539 363,266 27Sep23	1	- DRYWALL - SMOOTH CEILING IN FINISHED LOWER LEVEL - UPG PAINTING-Paint Smooth Ceiling
1539 363,410 27Sep23 **	1	- CLASSIC COLLECTION SCHEDULE A - Choice of 20 LED pot lights in finished areas (Second Floor Potlight(s) Require Smooth Ceiling) DRYWALL-Drywall Ceiling cutouts for potlights FRAMING-Frame to accommodate potlights 4 X POT LIGHTS IN RECREATION ROOM -USE EXISTING 3 WAY SWITCH- DELETE 2 STANDARD LIGHTS/ 6 X POT LIGHTS IN GREAT ROOM ON SEPARATE SWITCH\ 4 X POT LIGHTS IN KITCHEN ON SEPARATE SWITCH 3 X POT LIGHTS IN MAIN HALL ON SEPARATE SWITCH -STANDARD CEILING LIGHT TO REMAIN 3 X POT LIGHTS IN UPPER HALL ON EXISTING 4 2AY SWITCH - DELETE 2 STANDARD LIGHTS IN UPPER HALL STANDARD CEILING LIGHT IN UPPER STAIR LANDING TO REMAIN SEE SKETCH # 1, 2 AND 3



CONSTRUCTION SUMMARY

Lot: 60
Model: 28-2409 C THE PINE
Project/Phase: Williamsburg Green / 1

ELECTRICAL

Invoice	Qty.	Description
1539 362,765 27Sep23 **	1	- DRYWALL - SMOOTH CEILINGS - SECOND FLOOR HALLWAY ONLY - UPG ELECTRICAL-Drop electrical boxes; PAINTING-Paint smooth ceiling
1539 362,858 27Sep23 **	1	KITCHEN - HEATING / AIR CONDITIONING-ROUGH-IN GAS LINE FOR GAS STOVE AT MAIN FLOOR (SEE SPECS) (HOOK-UP NOT INCLUDED) LEAVE STANDARD 120 VOLT ELECTRICAL OUTLET ON A SEPARATE CIRCUIT. * SPECIFY IF STANDARD 220V WILL STAY OR BE RELOCATED STANDARD 220V TO REMAIN SKETCH # 2 ELECTRICAL-Notify
1539 363,222 27Sep23	1	GREAT ROOM - ELECTRICAL-INTERIOR DUPLEX OUTLET ON EXISTING CIRCUIT INSTALL CENTERED +/- ABOVE FIREPLACE 70" +/- FROM FLOOR SKETCH # 2
1539 363,261 27Sep23	1	KITCHEN - ELECTRICAL-RELOCATION OF SWITCHES/LIGHTS RELOCATED STANDARD KITCHEN LIGHT TO BE CAPPED CENTERED +/- ABOVE KITCHEN ISLAND SKETCH # 2
1539 363,222 27Sep23	1	FINISHED BASEMENT FAMILY (REC) ROOM - ELECTRICAL-INTERIOR DUPLEX OUTLET ON EXISTING CIRCUIT INSTALL ABOVE ELECTRICAL FIREPLACE 70" +/- FROM FLOOR SKETCH # 1
1539 363,410 27Sep23	1	- CLASSIC COLLECTION SCHEDULE A - Choice of 20 LED pot lights in finished areas (Second Floor Potlight(s) Require Smooth Ceiling) DRYWALL-Drywall Ceiling cutouts for potlights FRAMING-Frame to accommodate potlights 4 X POT LIGHTS IN RECREATION ROOM -USE EXISTING 3 WAY SWITCH- DELETE 2 STANDARD LIGHTS/ 6 X POT LIGHTS IN GREAT ROOM ON SEPARATE SWITCH\ 4 X POT LIGHTS IN KITCHEN ON SEPARATE SWITCH 3 X POT LIGHTS IN MAIN HALL ON SEPARATE SWITCH -STANDARD CEILING LIGHT TO REMAIN 3 X POT LIGHTS IN UPPER HALL ON EXISTING 4 2AY SWITCH - DELETE 2 STANDARD LIGHTS IN UPPER HALL STANDARD CEILING LIGHT IN UPPER STAIR LANDING TO REMAIN SEE SKETCH # 1, 2 AND 3

FRAMING

Invoice	Qty.	Description
1539 363,269 27Sep23 **	1	- COFFERED CEILING - OPT. COFFERED CEILING - GREAT ROOM - UPG DRYWALL-Notify; FRAMING-Notify; PAINTING-Notify
1539 363,410 27Sep23 **	1	- CLASSIC COLLECTION SCHEDULE A - Choice of 20 LED pot lights in finished areas (Second Floor Potlight(s) Require Smooth Ceiling) DRYWALL-Drywall Ceiling cutouts for potlights FRAMING-Frame to accommodate potlights 4 X POT LIGHTS IN RECREATION ROOM -USE EXISTING 3 WAY SWITCH- DELETE 2 STANDARD LIGHTS/ 6 X POT LIGHTS IN GREAT ROOM ON SEPARATE SWITCH\ 4 X POT LIGHTS IN KITCHEN ON SEPARATE SWITCH 3 X POT LIGHTS IN MAIN HALL ON SEPARATE SWITCH -STANDARD CEILING LIGHT TO REMAIN 3 X POT LIGHTS IN UPPER HALL ON EXISTING 4 2AY SWITCH - DELETE 2 STANDARD LIGHTS IN UPPER HALL STANDARD CEILING LIGHT IN UPPER STAIR LANDING TO REMAIN SEE SKETCH # 1, 2 AND 3



CONSTRUCTION SUMMARY

Lot: 60
Model: 28-2409 C THE PINE
Project/Phase: Williamsburg Green / 1

HEATING / AIR CONDITIONING

Invoice	Qty.	Description
1539 362,858 27Sep23	1	KITCHEN - HEATING / AIR CONDITIONING-ROUGH-IN GAS LINE FOR GAS STOVE AT MAIN FLOOR (SEE SPECS) (HOOK-UP NOT INCLUDED) LEAVE STANDARD 120 VOLT ELECTRICAL OUTLET ON A SEPARATE CIRCUIT. * SPECIFY IF STANDARD 220V WILL STAY OR BE RELOCATED STANDARD 220V TO REMAIN SKETCH # 2 ELECTRICAL-Notify
1539 362,855 27Sep23	1	- HEATING / AIR CONDITIONING-ROUGH-IN GAS LINE FOR BBQ AT MAIN FLOOR UP TO 40 FT (QUICK CONNECT NOT INCLUDED); ELECTRICAL OUTLET PRICED SEPARATELY IF REQUIRED SKETCH # 2

PAINTING

Invoice	Qty.	Description
1539 362,765 27Sep23 **	1	- DRYWALL - SMOOTH CEILINGS - SECOND FLOOR HALLWAY ONLY - UPG ELECTRICAL-Drop electrical boxes; PAINTING-Paint smooth ceiling
1539 363,269 27Sep23 **	1	- COFFERED CEILING - OPT. COFFERED CEILING - GREAT ROOM - UPG DRYWALL-Notify; FRAMING-Notify; PAINTING-Notify
1539 363,266 27Sep23 **	1	- DRYWALL - SMOOTH CEILING IN FINISHED LOWER LEVEL - UPG PAINTING-Paint Smooth Ceiling

SECURITY

Invoice	Qty.	Description
1539 363,189 27Sep23	1	- SECURITY-SECURITY CAMERA ROUGH-IN AT REAR OF HOUSE SKETCH # 2

STRUCTURED WIRING

Invoice	Qty.	Description
1539 363,195 27Sep23	1	GREAT ROOM - STRUCTURED WIRING-CONDUIT PIPE TO ABOVE FIREPLACE ROUGH-IN TO BE CENTERED 70" +/- FROM FLOOR TO STANDARD RG6 R/I LOCATION SKETCH # 2
1539 363,195 27Sep23	1	FINISHED BASEMENT FAMILY (REC) ROOM - STRUCTURED WIRING-CONDUIT PIPE TO ABOVE FIREPLACE ROUGH-IN INSTALL ABOVE ELECTRIC FIREPLACE 70" +/- FROM FLOOR TO RELOCATED STD RG6 SKETCH # 1
1539 363,201 27Sep23	1	FINISHED BASEMENT FAMILY (REC) ROOM - STRUCTURED WIRING-RELOCATION OF TV/PHONE RELOCATE STANDARD RG6 ROUGH-IN LOCATION TO BE BESIDE ELECTRIC FIREPLACE SKETCH # 1

THE PINE

28-2409 ELEV. C

ELEVATION C | 3,073 SQ. FT.

Including 668 sq. ft. of Finished Lower Level

Finished Lower Level

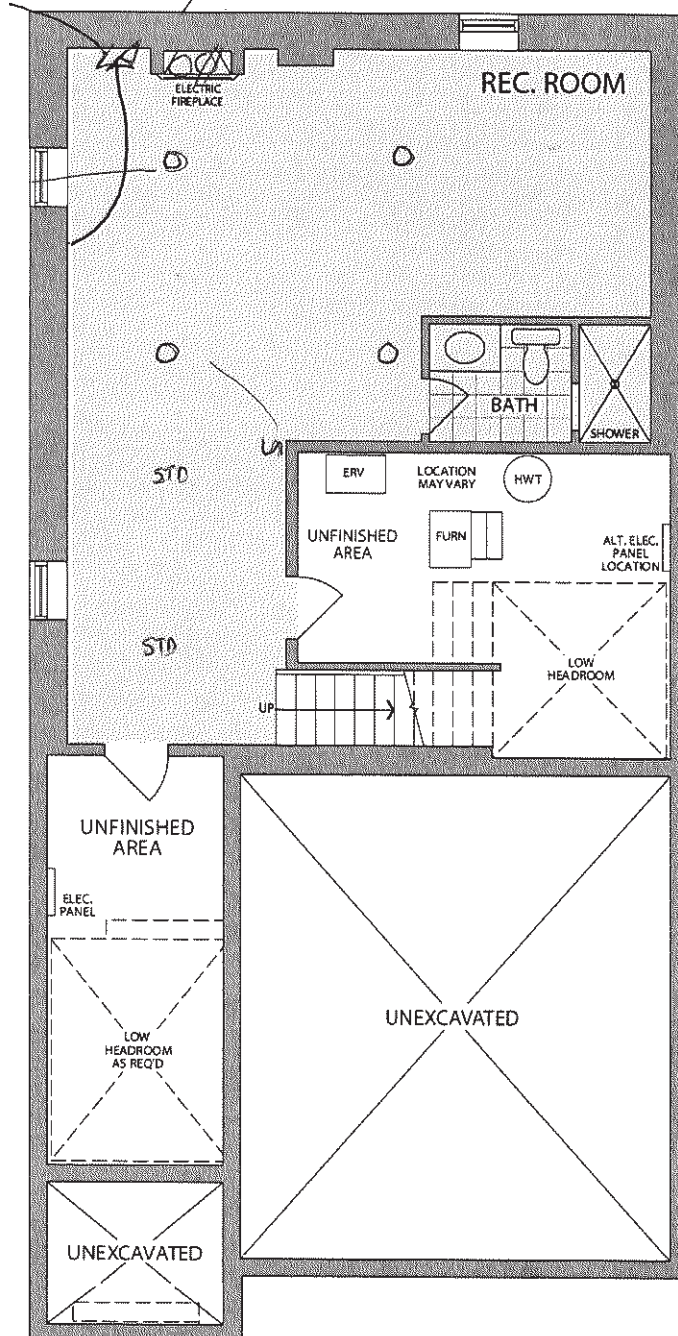


Sketch #1

OUTLET AND CONDUIT CENTERED +/- ABOVE FIREPLACE
 70" +/- FROM FLOOR TO THE RELOCATED RG6

RELOCATE STANDARD RG6
 ROUGH-IN LOCATION TO BE
 BESIDE ELECTRIC
 FIREPLACE

4 X POT LIGHTS IN RECREATION
 ROOM -USE EXISTING 3 WAY
 SWITCH- DELETE
 2 STANDARD LIGHTS/



LOWER LEVEL
 ELEVATION C

* Floor plan may vary due to grading conditions.

THE PINE

ELEVATION C | 3,073 SQ. FT.
 Including 668 sq. ft. of Finished Lower Level

28-2409 ELEV. C

Main Level



GAS R/I BBQ

Sketch #2

SECURITY CAMERA
 ROUGH-IN

RELOCATED STANDARD KITCHEN
 LIGHT TO BE CAPPED CENTERED
 +/- ABOVE KITCHEN ISLAND USE
 EXISTING KITCHEN SWITCH

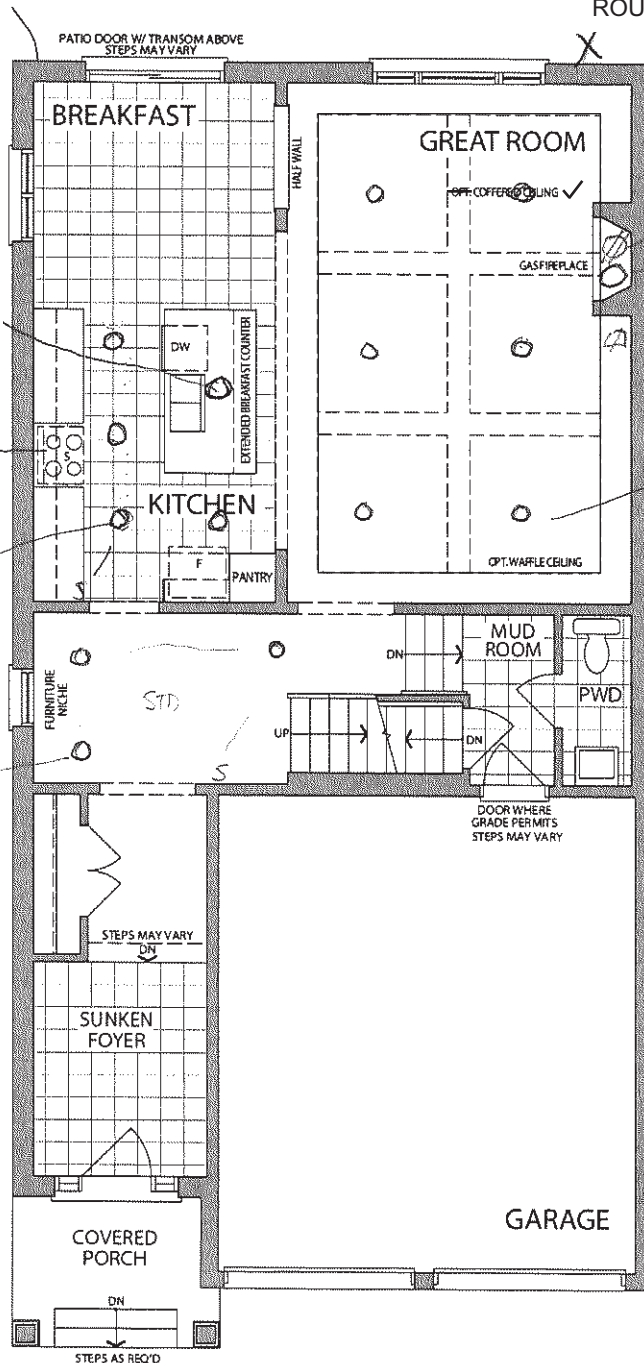
GAS R/I STOVE

4 X POT LIGHTS IN KITCHEN
 ON SEPARATE SWITCH

3 X POT LIGHTS IN MAIN HALL
 ON SEPARATE SWITCH -
 STANDARD CEILING LIGHT TO
 REMAIN

CONDUIT AND OUTLET
 CENTERED +/- ABOVE
 FIREPLACE 70" +/- FROM FLOOR

6 X POT LIGHTS IN GREAT ROOM ON
 SEPARATE SWITCH



MAIN LEVEL
 ELEVATION C

* Floor plan may vary due to grading conditions.

28-2409 ELEV. C

Second Level

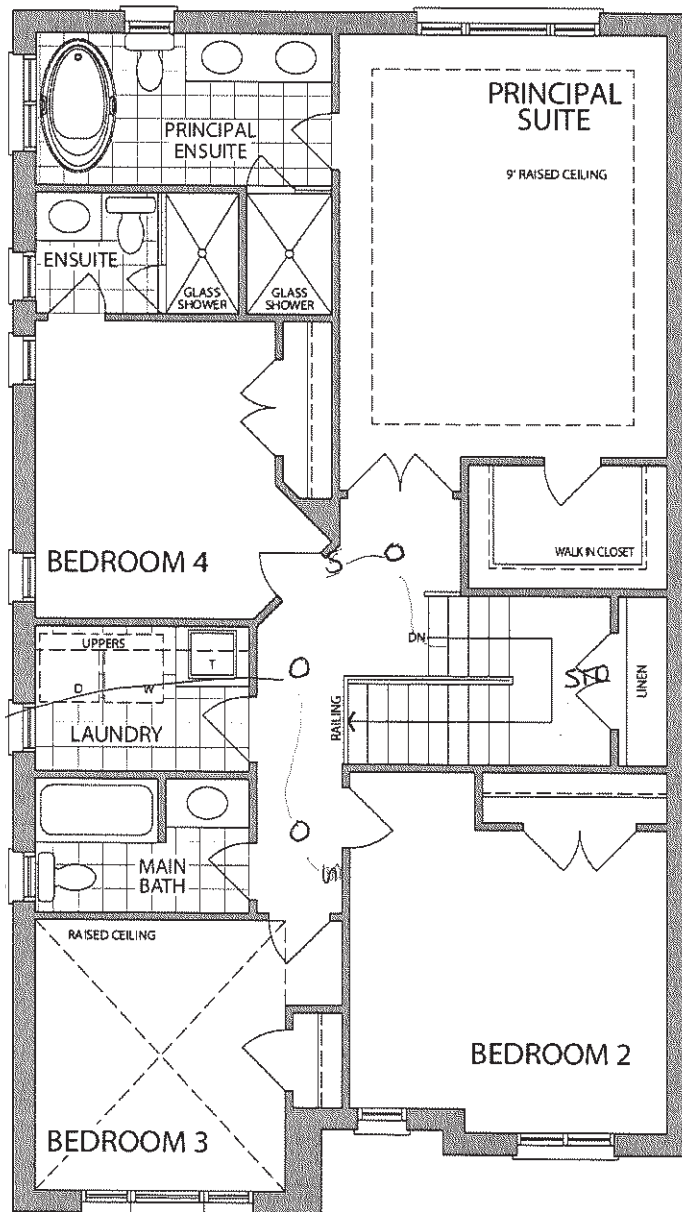
THE PINE

ELEVATION C | 3,073 SQ. FT.

including 668 sq. ft. of Finished Lower Level



Sketch #3



3 X POT LIGHTS IN UPPER HALL
ON EXISTING 4 WAY SWITCH
DELETE 2 STANDARD LIGHTS IN
UPPER HALL

STANDARD CEILING LIGHT IN UPPER
STAIR LANDING TO REMAIN

SECOND LEVEL
ELEVATION C

* Floor plan may vary due to grading conditions.