



Sales Selection Sheet
Williamsburg Green

71 of 79

PURCHASER: INVENTORY HOME_140

TEL:

LOT / UNIT 140	PHASE 1	MODEL 28-2550 C THE FOREST	
-------------------	------------	-------------------------------	--

It is herein understood and agreed between the undersigned parties hereto that the following changes shall be made to the above mentioned Agreement of Purchase and Sale in accordance with the agreement and except for such changes noted below, all other terms and conditions in the Agreement of Purchase and Sale shall remain as stated herein: It is further understood that and agreed that all changes and additions shall be installed as per builder's specifications, location and available selections. The Purchaser hereby agrees to purchase the following extras:

CABINETRY

1 126,089	KITCHEN - DELETE OPTIONAL BUILT IN KITCHEN CLASSIC- UPG AS PER ORIGINAL SSS Note: DELETE SPECS FOR BUILT-IN MICRO/OVEN AND 36" GAS COOKTOP AS PER ORIGINAL SSS REPLACED WITH KITCHENAID 36" SLIDE - IN GAS RANGE SEE SPECS	Qty: 1
2 126,090	KITCHEN - DELETE B-08 9 X SOFT CLOSE DRAWERS IN KITCHEN AS PER ORIGINAL SSS Note:	Qty: 9
3 126,091	KITCHEN - DELETE RELOCATION OF FRIDGE FOR BUILT IN MICRO/OVEN AS PER ORIGINAL SSS. FRIDGE TO REMAIN AS PER PLAN WITH STANDARD PANTRY BESIDE AT THE END Note: SKETCH # 8	Qty: 1
4 126,097	KITCHEN - H-36 BASE CABINET FOR BUILT-IN MICROWAVE WITH TRIM KITWITH DRAWER BELOW -CLASSIC Note: SKETCH # 8	Qty: 1

DRYWALL

5 126,095	- CLARIFICATION- SMOOTH CEILINGS ON MAIN FLOOR ARE A STANDARD FEATURE. Note:	Qty: 1
------------------	--	--------

ELECTRICAL

6 126,092	KITCHEN - DELETE RELOCATION OF 240V PLUG. THE STANDARD 240V 40AMP PLUG TO BUILT-IN LOCATION AS PER ORIGINAL SSS. STANDARD 240V TO REMAIN AT STOVE LOCATION Note: SKETCH # 8	Qty: 1
7 126,098	KITCHEN - EXTRA WALL INTERIOR OUTLET 120V 15AMP ON SEPARATE CIRCUIT (ON ARCAULT) FOR MICROWAVE DRAWER Note: SKETCH # 8 SEE SHARP MICRODRAWER SPECS	Qty: 1

GRANITE

8 126,093	KITCHEN - DELETE GRANITE CUT OUT w/STRAIGHT EDGE POLISH FOR 36" COOKTOP AS PER ORIGINAL SSS. THIS IN NOW A FREESTANDING 36" GAS RANGE Note: SKETCH # 8	Qty: 1
------------------	--	--------

HEATING / AIR CONDITIONING

9 126,094	KITCHEN - CLARIFICATION - GAS LINE AS PER ORIGINAL SSS. STANDARD 240V 40AMP PLUG TO REMAIN AT 36" STOVE LOCATION ALONG WITH THE GAS LINE Note: SKETCH # 8	Qty: 1
------------------	---	--------

SECURITY

Initials: MR

TAX#:1

PREPARED BY: Marilyn Rosen

PE 1,434-1

SInvoice.rpt 28may19



Sales Selection Sheet
Williamsburg Green

72 of 79

PURCHASER: INVENTORY HOME_140 TEL:

LOT / UNIT 140	PHASE 1	MODEL 28-2550 C THE FOREST	
-------------------	------------	-------------------------------	--

SECURITY

10	THROUGHOUT - ADDITIONAL SECURITY CAMERA ROUGH-INS	Qty: 6
126,096	Note: 1 X FINISHED BASEMENT REC ROOM / 1 X GREAT ROOM BY BACK WINDOW / 1 X SECOND FLOOR HALL AND 3 X EXTERIOR (1X FRONT PORCH / 1 X CORNER OF GARAGE / 1 X BACK CORNER BY GREAT ROOM WINDOW SEE SKETCH #'S 7, 8 AND 9	

Sub Total
HST
Total

- 1. This Sales Selection Sheet when properly executed forms part of our Agreement of Purchase and Sale.
- 2. All extras and upgrades listed above are subject to Construction Progress and Architectural and Municipal requirements.
- 3. In the event the Vendor is unable to incorporate the work approved above in the construction of the house for any reason whatsoever, the Vendor will not be liable to the Purchaser in any way. The monies paid for any changes or optional extras not proceeded with shall be returned to the Purchaser, without interest. The cost of options or extras is non-refundable in all other circumstances. If for any reason whatsoever the Agreement of Purchase and Sale is not completed, the total cost of work approved above will be retained by the Vendor.
- 4. The Vendor reserves the right to substitute above materials and equipment with that of equal or better quality.
- 5. Purchaser acknowledges that items may not be exactly as shown. Variations from the Vendor's samples may occur in finished materials due to normal production processes. Vendor is not responsible for shade difference which may occur from different dye lots or wood grains. Variations from the Vendor's samples will occur with natural materials such as wood, marble, granite, hardwood and brick.
- 6. The Vendor reserves the right to select Grout & Thresholds that best suits the Tile selected.
- 7. Selections will not be processed unless signed by Heathwood Homes Head Office.
- 8. The selections made on this schedule are final and cannot be changed once submitted.
- 9. The Purchaser has checked and acknowledges the accuracy of this schedule.

Payment Summary	
<u>Paid By</u>	<u>Amount</u>
<u>Total Payment:</u>	

PURCHASER: MODEL HOME
INVENTORY HOME_140

18-Apr-23
DATE

MARILYN ROSEN
Decor Consultant

18-Apr-23
DATE

04-18-2023

Date Approved

Heathwood Homes (Williamsburg)
Limited

TAX#:1

PREPARED BY: Marilyn Rosen

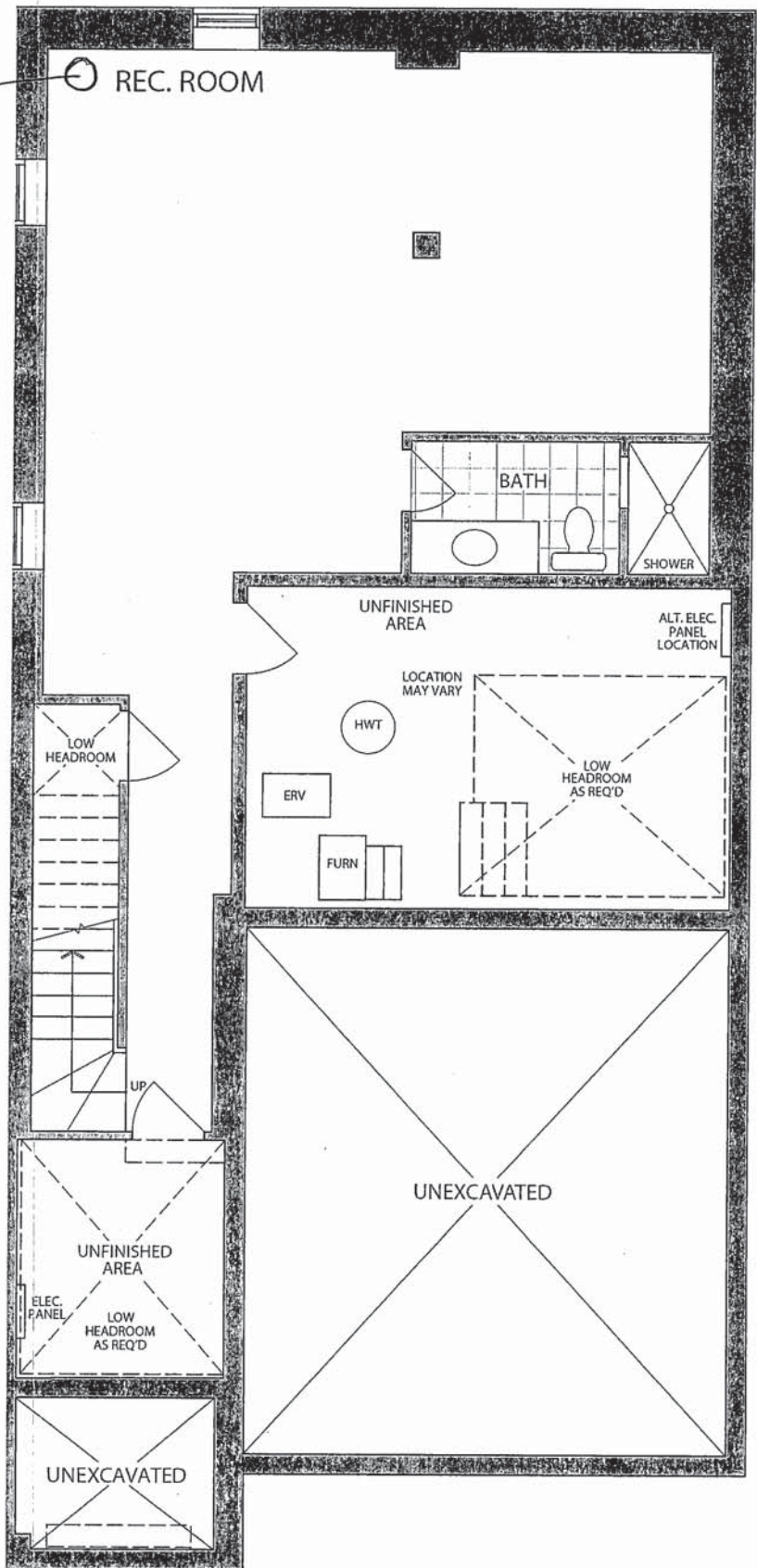
PE 1,434-2
SInvoice.rpt 28may19

Sketch # 7

THE FOREST
WILLIAMSBURG GREEN

28-2550 ELEV. C

SECURITY
CAMERA
ROUGH-IN

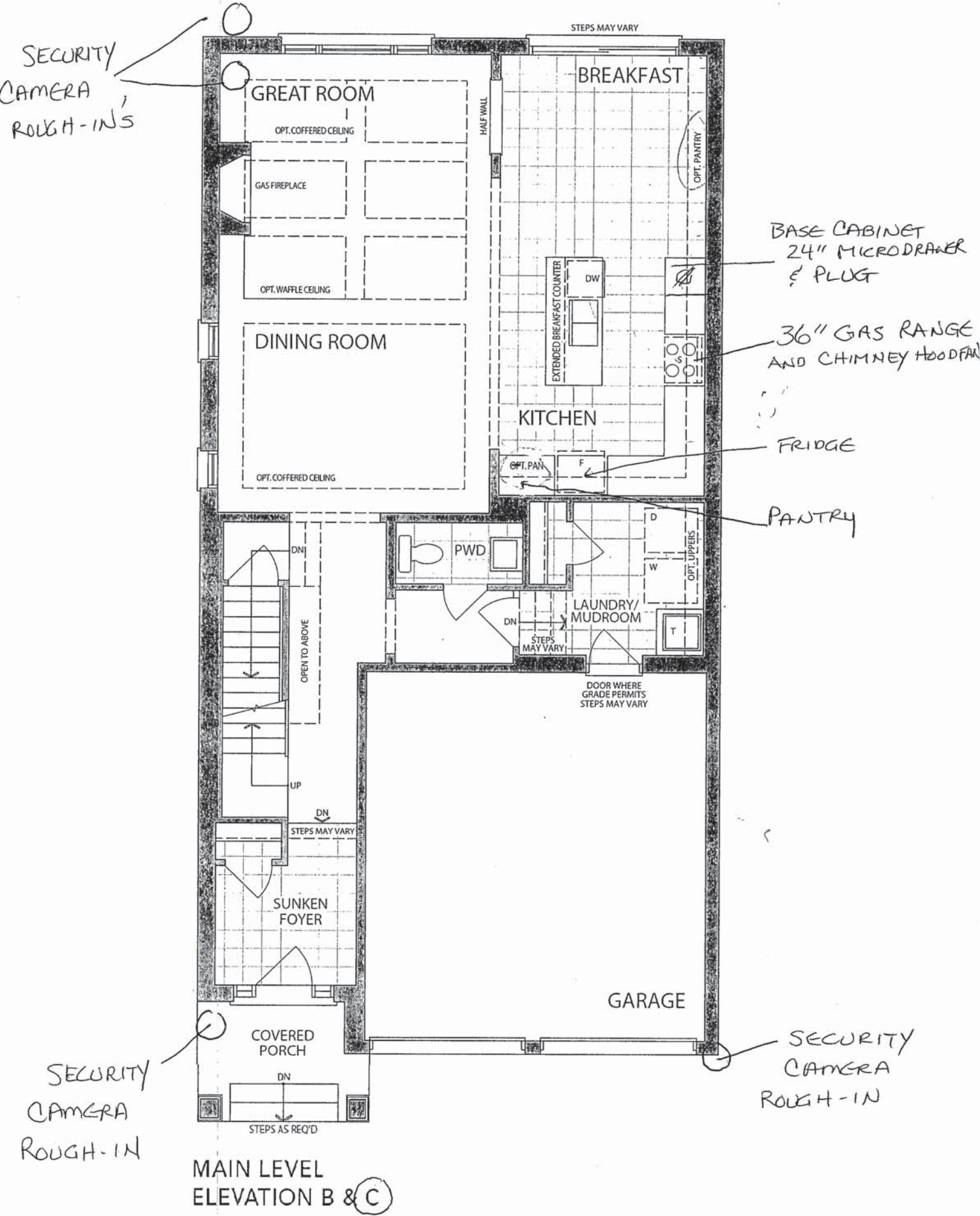


OPTIONAL FINISHED LOWER LEVEL
ELEVATION A
(ELEV. B & C SIMILAR)

Sketch #8

THE FOREST
WILLIAMSBURG GREEN

28-2550 ELEV. C

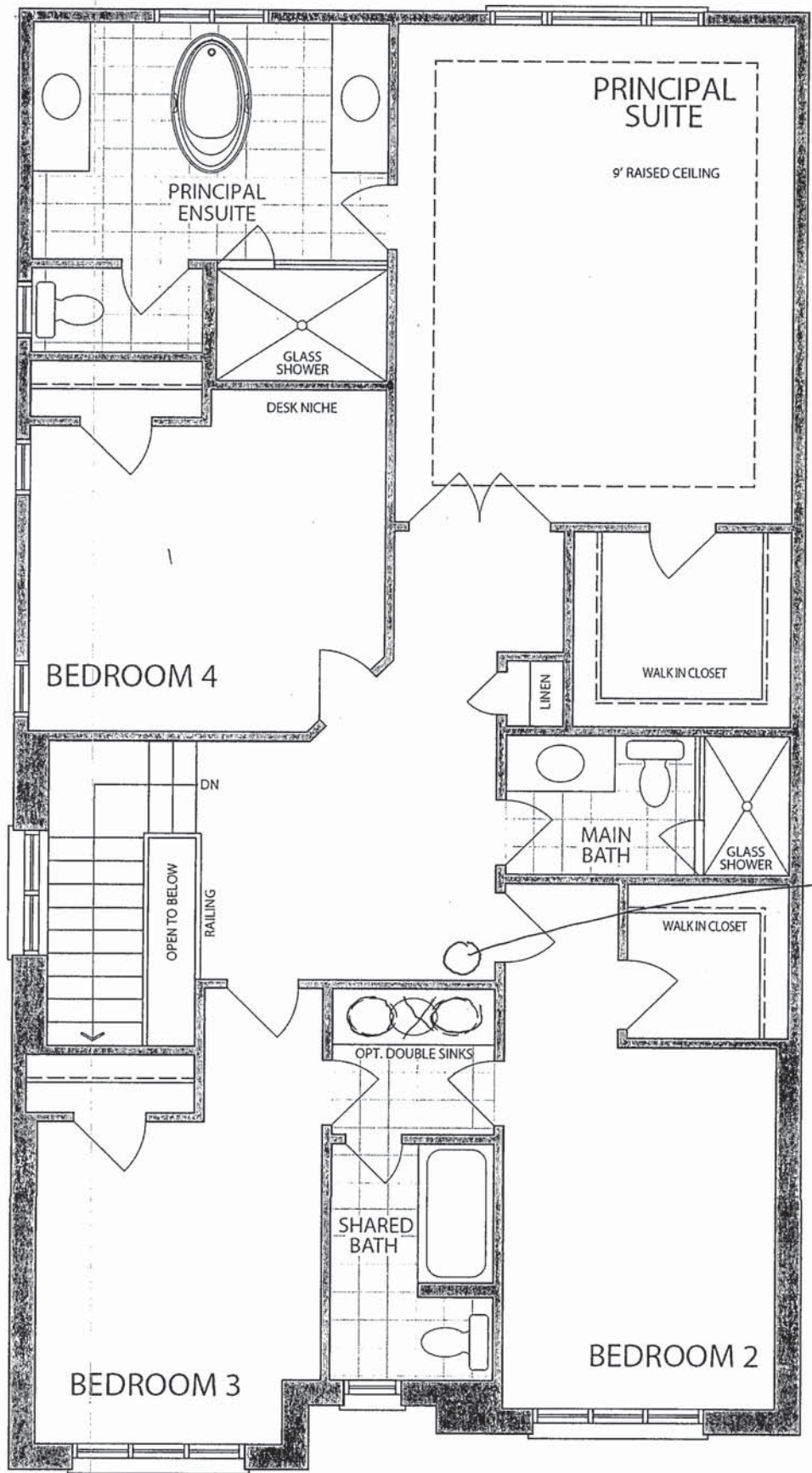


MAIN LEVEL
ELEVATION B & C

Sketch #9

THE FOREST
WILLIAMSBURG GREEN

28-2550 ELEV. C



SECURITY
CAMERA
ROUGH-IN

SECOND LEVEL
ELEVATION C

KitchenAid®

KitchenAid® 36" Smart Commercial-Style Gas Range with 6 Burners

KFGC506JSS

Expand your skills with a 36-inch KitchenAid® Commercial Style Range with 6 burners. This gas range features two versatile 20,000 BTU Ultra Power™ Dual-Flame Burners with the power and precision needed to successfully sear, simmer, stir-fry and sauté. Even-Heat™ True Convection helps you achieve more consistent baking and roasting.

Top Features

Even-Heat™ True Convection

Features a unique bow-tie design with heating element and fan that provide even airflow and consistent temperatures throughout the entire oven for crisp, flaky baked goods, juicy, evenly browned roasts and flavorful, caramelized vegetables.

Two 20,000 BTU Ultra Power™ Dual-Flame Burners

Give you precise control of powerful highs, steady lows and the wide range of temperatures in between. The versatile, dual-flame design lets you sear, sauté, simmer and sizzle, all on the same burner.

5,000 BTU Simmer & Melt Burner

With a low flame sized for small saucepans lets you reach and maintain low temperatures. Simmer sauces until they look, feel and taste just right and melt even delicate ingredients.

Three-Level Convertible Grates

With removable inserts match the heat to your technique. Leave the insert level for high-heat searing and sautéing, flip it over to lift your pan above the flame to simmer and melt or remove it to nestle a round-bottom wok in the flame for stir-fry.

Dimensions

Height	36
Width	35 7/8

Configuration and Overview

Fuel Type	Gas
Range Type	Freestanding
Size (IN, inches)	36
LP Convertible	Yes - Kit Included

Exterior

Door Removable	Yes
Oven Door	Metal & Glass
Oven Window Size	Large
Handle Type	Towel Bar
Handle Color	Stainless Steel

Exterior

Handle Material	Metal
-----------------	-------

Oven Details

Door Removable	Yes
Automatic Convection Conversion Temperature Adjust	Yes
Power On Indicator Light	Yes
Automatic Shut-Off	Yes
Interior Color	Black
Oven Control Location	Front
Oven Control Type	Knobs

Available Finishes/Colours

KFGC506JAV Matte Avocado	KFGC506JBK Imperial Black
KFGC506JIB Ink Blue	KFGC506JMB Misty Blue
KFGC506JMH Matte Milkshake	KFGC506JPA Passion Red

4 Additional finishes/colours available.

Manuals & Literature:

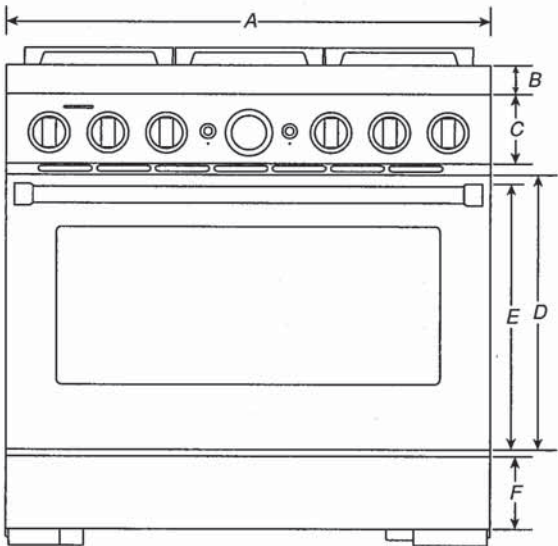
PDF Dimension Guide	PDF Installation Instructions
PDF Use and Care	PDF Warranty

DIMENSIONS

COMMERCIAL-STYLE RANGES

PRODUCT DIMENSIONS

MODEL #	30" (76.2 cm) RANGES DUAL-FUEL/GAS KFDC500J/KFGC500J		36" (91.4 cm) RANGES DUAL-FUEL/GAS KFDC506J/KFGC506J	
	in	cm	in	cm
Overall Width (A)	29 ⁷ / ₈	75.9	35 ⁷ / ₈	91.1
Bullnose Height (B)	2 ³ / ₁₆	5.6	2 ³ / ₁₆	5.6
Control Panel Height (C)	5 ⁵ / ₁₆	13.5	5 ⁵ / ₁₆	13.5
Door Height (D)	20 ¹¹ / ₁₆	52.6	20 ¹¹ / ₁₆	52.6
Door Bottom to Handle Top (E)	20	50.8	20	50.8
Toe-Kick Height (F)	5 ¹ / ₂	14	5 ¹ / ₂	14



FRONT VIEW

IMPORTANT: Dimensional specifications are provided for planning purposes only.
Do not make any cutouts based on this information. Refer to the Installation Guide before selecting cabinetry, verifying electrical/gas connections, making cutouts or beginning installation. All KitchenAid® appliances are appropriately UL, CUL or CSA approved.

SHARP

SMD2477ASC

24-INCH MICROWAVE DRAWER® OVEN



TAKE YOUR MICROWAVE TO A BETTER PLACE

It's your kitchen, your design and your lifestyle. Sharp's Microwave Drawer Oven allows you to focus on the design elements you prefer by removing the microwave from sightlines and enabling more design versatility. The Microwave Drawer offers flexible placement options below an island, peninsula, or standard cabinetry, and can also be installed adjacent to your wall oven. The Microwave Drawer allows you to showcase your design savvy and create a kitchen that flows with your lifestyle.

Sharp introduces the next generation of this successful appliance—model SMD2477ASC - a 24" microwave drawer with a simpler and a sleeker design to match more built-in appliances.

Design Flexibility

Sharp's Microwave Drawer product expands the option for microwave placement in almost any kitchen plan—it's a perfect choice for open-plan kitchens, islands, peninsulas, and a great addition to wet bars, family rooms and home theatres.

Location and Counter Space Saving

You may place the drawer under a counter, cooktop or wall oven or above a warming drawer without a built-in kit, additional trim or venting. Sharp microwave drawer provides the best solution for a cleaner, uncluttered counter space.

SHARP's Exclusive AutoTouch™ System

Sharp's exclusive AutoTouch™ system allows you to open and close the drawer automatically at one-finger operation by pressing a button on the control panel.

New Hidden Control Panel

The new SMD2477ASC model features a hidden control panel which gives a more integrated look and feel within the kitchen. The new tall control panel, angled at 45° degrees, is easy to see, easy to access and easy to use.

Specifications

TECHNICAL SPECIFICATIONS	
Size	24" wide
Microwave Capacity	1.2 cu.ft
Microwave Power	950 watts
Control Panel	Digital LCD Display
Control Type	Hidden Control Panel
Drawer Opening	AutoTouch™ System
Power Level	11
Sensor Cook, Reheat, Popcorn Settings	13
Reheat Auto Settings	2
Defrost Auto Settings	6
Keep Warm Setting	Yes, up to 30 min.
Melt / Soften / Settings	Yes
Beverage Setting	Yes
Programmable Stages	Yes, 4
Digital Clock	Yes
Kitchen Timer	Yes
Child Lock	Yes
+30 sec	Yes
Interior Oven Light	Yes

TECHNICAL SPECIFICATIONS CONTINUED	
Demonstration Mode	Yes
Built-in Ready	Yes
Available Colour	Stainless Steel
Accessory	SKMD24F0AS
DIMENSIONS/WEIGHT(inches/lbs.)	
Cut-out Dimension	22 1/8" x 15 9/16"
Product Dimension	23 7/8" x 23 1/64" x 15 7/8"
Box Dimension	29.8" w x 27.9" x 21.9"
Net Weight	74 lb.
Gross Weight	85.8 lb.
POWER/SAFETY	
Power / Ratings	120V, 60Hz
Ratings	1.67Kw, 14.5Amps
Safety Compliance	FCC, DHHS, cUL
WARRANTY/UPC	
Warranty	1 year parts & labour with in-home service; 4 additional years for magnetron tube only
UPC	074000619944



SMD2477ASC

