



SITE
FRENDEL KITCHENS

Sales Selection Sheet

Wallaceton
REVISED

42 of 46

PURCHASERS: TALWINDER SINGH and KIRANDEEP, KAUR KAMBOJ

TEL:

LOT / UNIT	PHASE	MODEL	
188C-18	1	20-1606 B The Grassfield	

It is herein understood and agreed between the undersigned parties hereto that the following changes shall be made to the above mentioned Agreement of Purchase and Sale in accordance with the agreement and except for such changes noted below, all other terms and conditions in the Agreement of Purchase and Sale shall remain as stated herein: It is further understood that and agreed that all changes and additions shall be installed as per builder's specifications, location and available selections. The Purchaser hereby agrees to purchase the following extras:

Cabinetry

1		Qty: 1	
36,661	Note: PURCHASER CHANGE FRIDGE AND STOVE SPEC FROM ORIGINAL APPLIANCE PACKAGE, CABINETS SIZE DID NOT CHANGE SEE SPEC PAGE# 'S 43-46		

Sub Total

HST

Total

1. This Sales Selection Sheet when properly executed forms part of our Agreement of Purchase and Sale.
2. All extras and upgrades listed above are subject to Construction Progress and Architectural and Municipal requirements.
3. In the event the Vendor is unable to incorporate the work approved above in the construction of the house for any reason whatsoever, the Vendor will not be liable to the Purchaser in any way. The monies paid for any changes or optional extras not proceeded with shall be returned to the Purchaser, without interest. The cost of options or extras is non-refundable in all other circumstances. If for any reason whatsoever the Agreement of Purchase and Sale is not completed, the total cost of work approved above will be retained by the Vendor.
4. The Vendor reserves the right to substitute above materials and equipment with that of equal or better quality.
5. Purchaser acknowledges that items may not be exactly as shown. Variations from the Vendor's samples may occur in finished materials due to normal production processes. Vendor is not responsible for shade difference which may occur from different dye lots or wood grains. Variations from the Vendor's samples will occur with natural materials such as wood, marble, granite, hardwood and brick.
6. The Vendor reserves the right to select Grout & Thresholds that best suits the Tile selected.
7. Selections will not be processed unless signed by Heathwood Homes Head Office.
8. The selections made on this schedule are final and cannot be changed once submitted.
9. The Purchaser has checked and acknowledges the accuracy of this schedule.

Payment Summary

Paid By	Amount
---------	--------

Total Payment:

PURCHASER:

Signature on file
TALWINDER SINGH

21-Sep-20

DATE

IRIT SALEM
Decor Consultant

21-Sep-20

DATE

PURCHASER:

KIRANDEEP, KAUR KAMBOJ

21-Sep-20

DATE

APPROVED

-09- 25 2020

Date Approved Heathwood Homes (Huron) Limited

TAX#:1

PREPARED BY: Irit Salem

PE 499-1

SInvoice.rpt 28may19

UK -75 WALLACETON
LOT 188C-18
20-1606 ELEV B
THE GRASSFIELD

43 of 46

FRIDGE (WRF540CWH2)

Specifications

Dimensions

Cabinet Width	90.49 cm, 35-5/8 in
Depth Closed Excluding Handles	68.26 cm, 26-7/8 in
Depth Closed Including Handles	74.61 cm, 29-3/8 in
Depth Excluding Doors	61.28 cm, 24-1/8 in
Depth With Door Open 90 Degree	33.02 cm, 13.0 in
Freezer Volume	159.05 l, 5.62 cu. ft.
Height	178.12 cm, 70-1/8 in
Height To Top Of Cabinet	174.94 cm, 68-7/8 in
Height To Top Of Door Hinge	178.12 cm, 70-1/8 in
Refrigerator Volume	406.95 l, 14.38 cu. ft.
Width	90.49 cm, 35-5/8 in

Configuration and Overview

Advance Foam Insulation	99.9% lower Global Warming Potential and Better Energy Performance
Counter Depth	Yes
Energy Star® Qualified	ENERGY STAR® Qualified
Number of Doors	3

Appearance

Cabinet Finish	Textured
Door Finish	Smooth
Door Style	Contour
Handle Material	Metal
Handle Type	Reach-Through Handle
Hidden Hinge	Yes
LCD Touch Screen	No
Reversible Door	No

Controls

Air Filter Indicator/Reset	No
Automatic Defrost	Yes
Control Location	Interior Up Front
Control Type	Electronic
Door Ajar/Open Alarm	Yes
Max Cool/Fast Cool	Yes
Verrouillage des commandes	No

UK -75 WALLACETON
LOT 188C-18
20-1606 ELEV B
THE GRASSFIELD

44 of 46

Freezer Details	
Door Type	Pull-Out
Freezer Drawer/Basket	1 Full Width Upper Plastic, 1 Full Width Lower Wire
Refrigerator Details	
Door Bins	2 Fixed Full-Width Gallon, 4 Adjustable Full-Width
Humidity-Controlled Drawers	2 Half-Width
Lighting	LED
Number of Interior Shelves	5
Pantry Drawer	Yes
Filter Details	
Fresh Flow Air Filter	No
Produce Preserver	Yes
Water Filter Indicator/Reset	Yes
Water Filter Location	Interior
Dispenser Details	
Dispenser Options	Filtered Water
Dispenser Type	Interior Water Only
Types of Ice	Cubed
Icemaker Details	
Icemaker	Factory Installed
Icemaker Location	Freezer
Electrical	
Volts	115

45 of 46



30" (76.2 cm) Freestanding Electric Range

YWEE 745 H0FS

PRODUCT MODEL NUMBERS

WEE500H0D WEE730H0D WEE760H0D WEE745H0F

Electrical: If codes permit and a separate ground wire is used, it is recommended that a qualified electrical installer determine that the ground path and wire gauge are in accordance with local codes.

Do not use an extension cord.

To properly install your range, you must determine the type of electrical connection you will be using and follow the instructions provided for it here.

- Range must be connected to the proper electrical voltage and frequency as specified on the model/serial number rating plate. The model/serial rating plate is located behind the oven door on the top right-hand side of the oven frame.
- This range is manufactured with the neutral terminal connected to the cabinet. Use a 3-wire, UL Listed, 40- or 50-amp power supply cord (pigtail) (see following Range Rating chart). If local codes do not permit ground through the neutral, use a 4-wire power supply cord rated at 250 volts, 40 or 50 amps and investigated for use with ranges.

Range Rating*		Specified Rating of Power Supply Cord Kit and Circuit Protection
120/240 Volts	120/208 Volts	Amps
8.8 - 16.5 KW	7.8 - 12.5 KW	40 or 50**
16.6 - 22.5 KW	12.6 - 18.5 KW	50

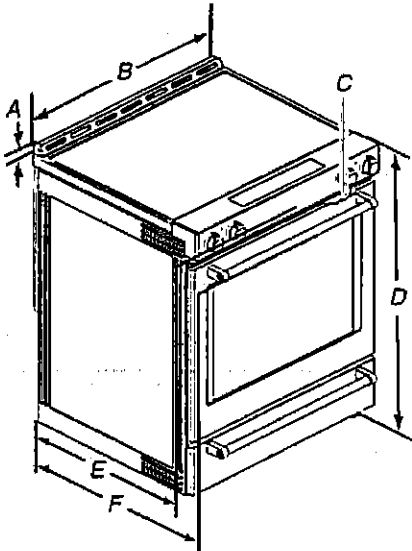
* The NEC calculated load is less than the total connected load listed on the model/serial rating plate.

** If connecting to a 50-amp circuit, use a 50-amp rated cord with kit. For 50-amp rated cord kits, use kits that specify use with a nominal 1^{3/8}" (34.9 mm) diameter connection opening.

■ A circuit breaker is recommended.

PRODUCT DIMENSIONS

This manual covers several models. Your model may appear different from the models depicted. Dimensions given are maximum dimensions across all models.



- A. 1^{1/8}" (3.0 cm) height from cooktop to top of vent
- B. 29^{1/8}" (75.9 cm) depth from front of console to back of range
- C. Model/serial number plate (located behind the oven door on the top right-hand side of the oven frame)
- D. 36" (91.4 cm) height to top of cooktop edge with leveling legs screwed all the way in*
- E. 28^{1/8}" (71.9 cm) max. depth from front of console to back of range
- F. 28^{1/8}" (73.3 cm) max. depth from handle to back of range

IMPORTANT: Range must be level after installation. Follow the instructions in the "Level Range" section. Using the cooktop as a reference for leveling the range is not recommended.

* Range can be raised approximately 1" (2.5 cm) by adjusting the leveling legs.

46 of 46

CABINET OPENING DIMENSIONS

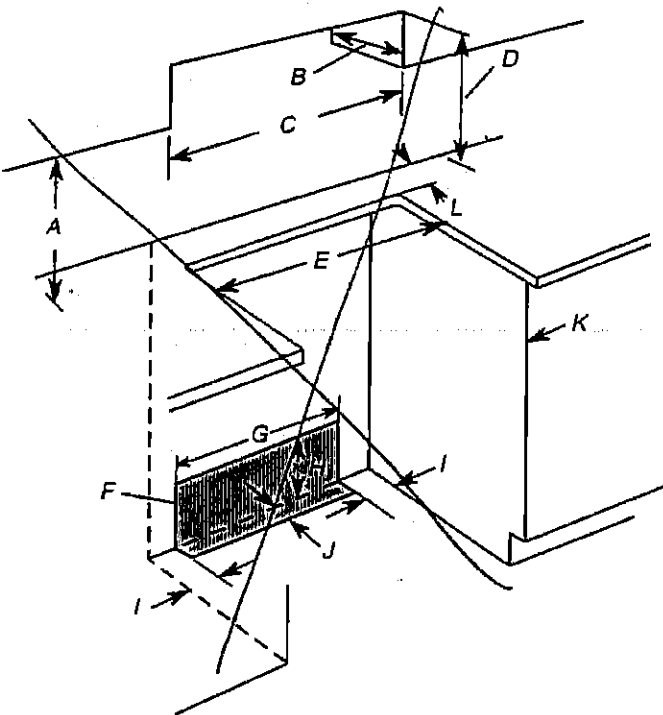
Cabinet opening dimensions shown are for 25" (64.0 cm) countertop depth, 24" (61.0 cm) base cabinet depth and 36" (91.4 cm) countertop height.

IMPORTANT: If installing a range hood or microwave hood combination above the range, follow the range hood or microwave hood combination installation instructions for dimensional clearances above the cooktop surface.

Range may be installed next to combustible walls with zero clearance.

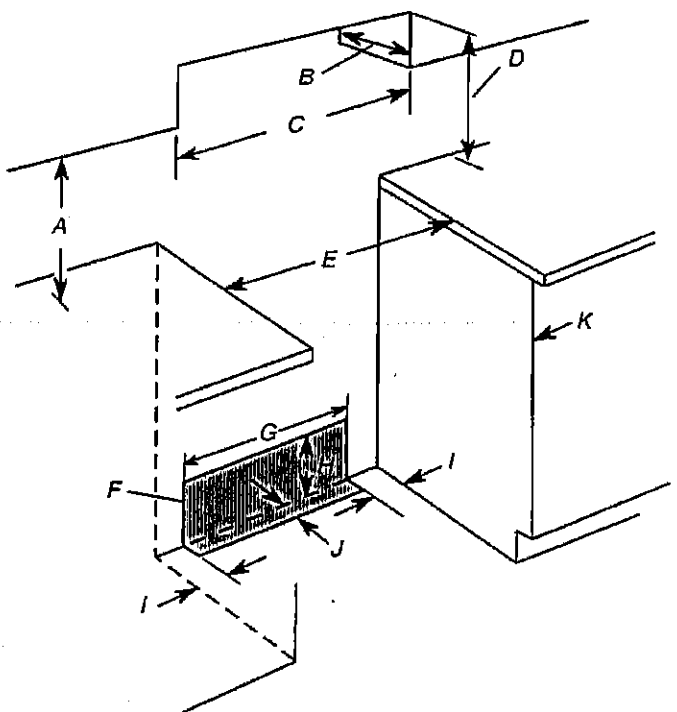
NOTE: When installed in a slide-in cutout, the front of oven door may protrude beyond the base cabinet.

Slide-In Cutout



- A. 18" (45.7 cm) upper side cabinet to countertop
- B. 13" (33 cm) max. upper cabinet depth
- C. 30" (76.2 cm) min. opening width
- D. For minimum clearance to top of cooktop, see NOTE*.
- E. In U.S.A.: 30" (76.2 cm) min. opening width
In Canada: 31" (78.7 cm) min. opening width
- F. The shaded area is recommended for installation of grounded outlet.
- G. 13 1/4" (33.3 cm)
- H. 7 1/16" (19.5 cm)
- I. 4 13/16" (12.2 cm)
- J. 3 1/16" (9.4 cm) or measurement of L, whichever is greater
- K. Cabinet door or hinges should not extend into the cutout.
- L. Remaining counter depth should not exceed 2 1/4" (5.7 cm)

Freestanding Cutout



- A. 18" (45.7 cm) upper side cabinet to countertop
- B. 13" (33 cm) max. upper cabinet depth
- C. 30" (76.2 cm) min. opening width
- D. For minimum clearance to top of cooktop, see NOTE*.
- E. In U.S.A.: 30" (76.2 cm) min. opening width
In Canada: 31" (78.7 cm) min. opening width
- F. The shaded area is recommended for installation of grounded outlet.
- G. 13 1/4" (33.3 cm)
- H. 7 1/16" (19.5 cm)
- I. 4 13/16" (12.2 cm)
- J. 3 1/16" (9.4 cm)
- K. Cabinet door or hinges should not extend into the cutout.

* NOTE: 24" (61.0 cm) minimum when bottom of wood or metal cabinet is shielded by not less than 1/4" (0.64 cm) flame retardant millboard covered with not less than No. 28 MSG sheet steel, 0.015" (0.4 mm) stainless steel, 0.024" (0.6 mm) aluminum or 0.020" (0.5 mm) copper.

30" (76.2 cm) minimum clearance between the top of the cooking platform and the bottom of an uncovered wood or metal cabinet.