

CONSTRUCTION SUMMARY			
Charisma Condominiums - Dulcina Investments Inc.		RECEIVED	
PURCHASER: Hassan MORSHEDI		AUG - 4 2023	TEL:
Unit 3, Level 15 (1603-5)	Floor Plan C970		

CABINETRY

1 - CABINETRY PROVISION - PROVISION FOR PLUG ON ISLAND (PLUG EXTRA ORDERED SEPARATELY)	
29Jun23 Note:	

ELECTRICAL

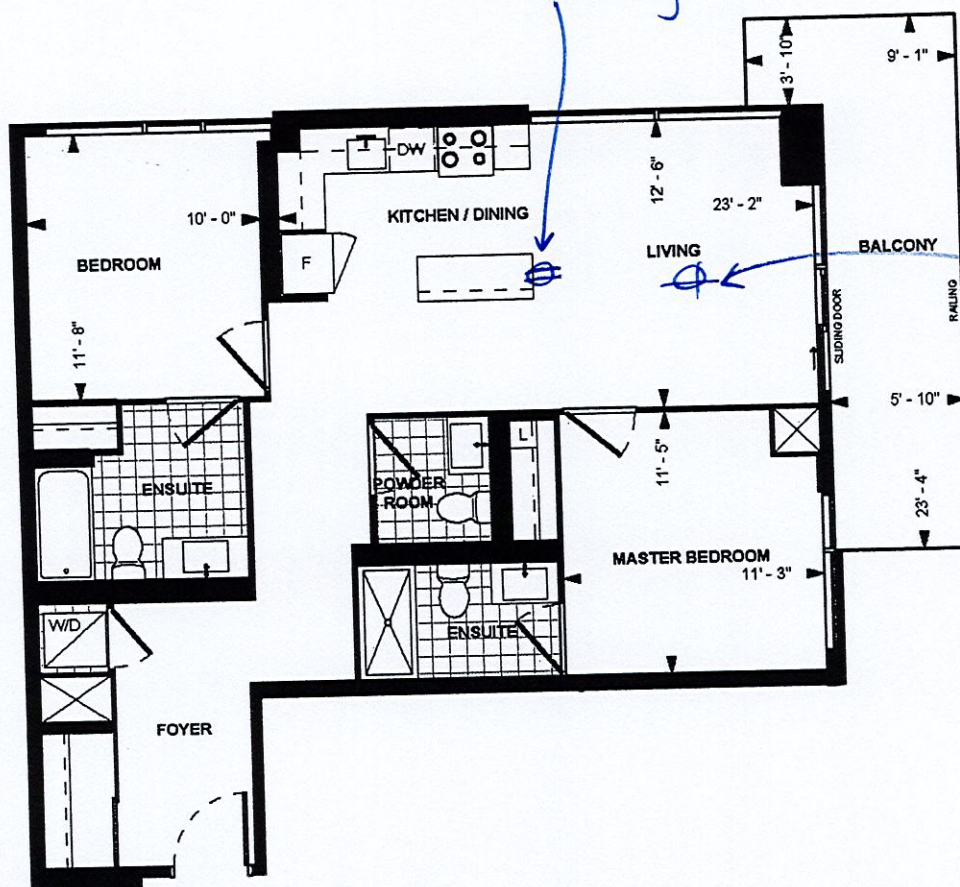
1 - PLUG - ADD PLUG AT ISLAND	
29Jun23 Note:	
1 - LIGHT - ADD CEILING LIGHT COMPLETE WITH FIXTURE AND SWITCH	
29Jun23 Note:	

EXTRAS AS PER OFFER

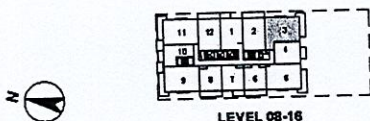
1 Parking Unit - location to be selected by the Vendor at their sole discretion.	
Worksheet Note:	

This Document is Extremely Time Sensitive - Printed 1 Aug 23 at 15:00

THE FIFTH
AT CHARISMA



C970
TOWER SUITE
9' CEILING
970 sq. ft.
2-BEDROOM
(BARRIER FREE)



Dimensions, specifications, layouts, location of materials and fixtures, tile floor patterns and architectural detailing (including windows and location and door size, location and swing) are approximate only and are subject to change or modifications, without notice. Actual usable floor space varies from stated floor area. Ceiling height measured from top of floor slab to underside of joist above and excludes trusses, bulkheads and drop ceilings. Orientation of suite may be reversed and Purchaser agrees to accept same. Balconies, decks and terraces are exclusive use common elements shown for display purposes only and location and size are subject to change without notice. All illustrations are artist concept only. The provisions of the Agreement of purchase and sale apply to this Schedule E, & O.E.

Unit 3, Level 15 Suite 1603

Dimensions, specifications, layouts, location of materials and fixtures, tile floor patterns and architectural detailing (including window size and location and door size, location and swing) are approximate only and are subject to change or modifications, without notice. Actual usable floor space varies from stated floor area. Ceiling height measured from top of floor slab to underside of floor slab above and excludes finishes, bulkheads and drop ceilings. Orientation of suite may be reversed and Purchaser agrees to accept same. Balconies, patios and terraces are exclusive use common elements shown for display purposes only and location and size are subject to change without notice. All illustrations are artist concept only. The provisions of the Agreement of purchase and sale apply to this Schedule.

E. & O.E. Oct 23, 2021