

" Revision "

CONSTRUCTION SUMMARY - PARTIAL ONLY					
Charisma Condominiums - Genazzano Highrises Inc.					
PURCHASER: George PETROU					TEL:

LOT NUMBER	PHASE	HOUSE TYPE	REG. PLAN #		
1523	West	A590			
INV#	QTY	EXTRA / CHANGE			

PLUMBING

25,040 18Feb21	1 - KITCHEN FAUCET - MOEN ALIGN SINGEL HANDLE PULL DOWN KITHCHEN FAUCET #7565 BL MATTE BLACK Note:
25,040 18Feb21	1 - MAIN BATH - MOEN RIZON SINGLE HANDLE LAV FAUCET WITH LIFT ROD DRAIN #6900 BL MATTE BLACK Note:
25,040 18Feb21	1 - MAIN BATH - MOEN RIZON ECO-PERFORMANCE POSI-TEMP SHOWER ONLY #T2812EP/ 62320 BL MATTE BLACK Note: STANDARD Shower Faucet in BLACK: VOSS-S6365 EP-BL.
25,040 18Feb21	1 - MAIN BATH - MOEN ALIGN BATHROOM ACCESSORIES 24" TOWEL BAR #YB0424 BL MATTE BLACK PIVOTING PAPER HOLDER #YB0408 BL MATTE BLACK Note:

This Document is Extremely Time Sensitive - Printed 22 Mar 22 at 16:04

RECEIVED
MAR 23 2022

Suite 1523
Charisma

MOEN®

FAUCET DESCRIPTION

- Metal construction with various finishes identified by suffix
- Includes showerhead, arm, flange and diverter spout
- Includes Red/Blue indicators

OPERATION

- Lever style handle with temperature indicator on the escutcheon
- Handle operates counterclockwise through a 270° arc with off at 6 o'clock and maximum hot at the 9 o'clock position. Shut off in clockwise direction
- Adjustable temperature limit stop to control maximum hot water temperature
- Pressure balancing mechanism maintains selected discharge temperature to $\pm 3.6^\circ\text{F}$ ($\pm 2^\circ\text{C}$)

FLOW

- Showerhead is limited to 2.5 gpm (9.5 L/min) at 80 psi
- EP suffix models are limited to 1.75 gpm (6.6 L/min) at 80 psi
- NH suffix models contain no showerhead

CARTRIDGE

- 1222 cartridge design
- Nonmetallic/nonferrous and stainless steel materials
- Accommodates back to back installations

STANDARDS

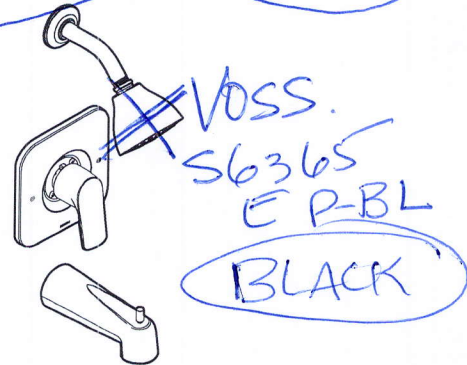
- Third party certified to meet ASME A112.18.1/CSA B125.1 and all applicable requirements referenced therein
- EP suffix models are IAPMO Green listed and third party certified to WaterSense®

- **ADA**  for lever handle

WARRANTY

- Lifetime limited warranty against leaks, drips and finish defects to the original homeowner
 - 10 year limited warranty when used in a multifamily installation
 - 5 year limited warranty when used in a commercial installation
- Visit www.moen.com/support for complete details and limitations

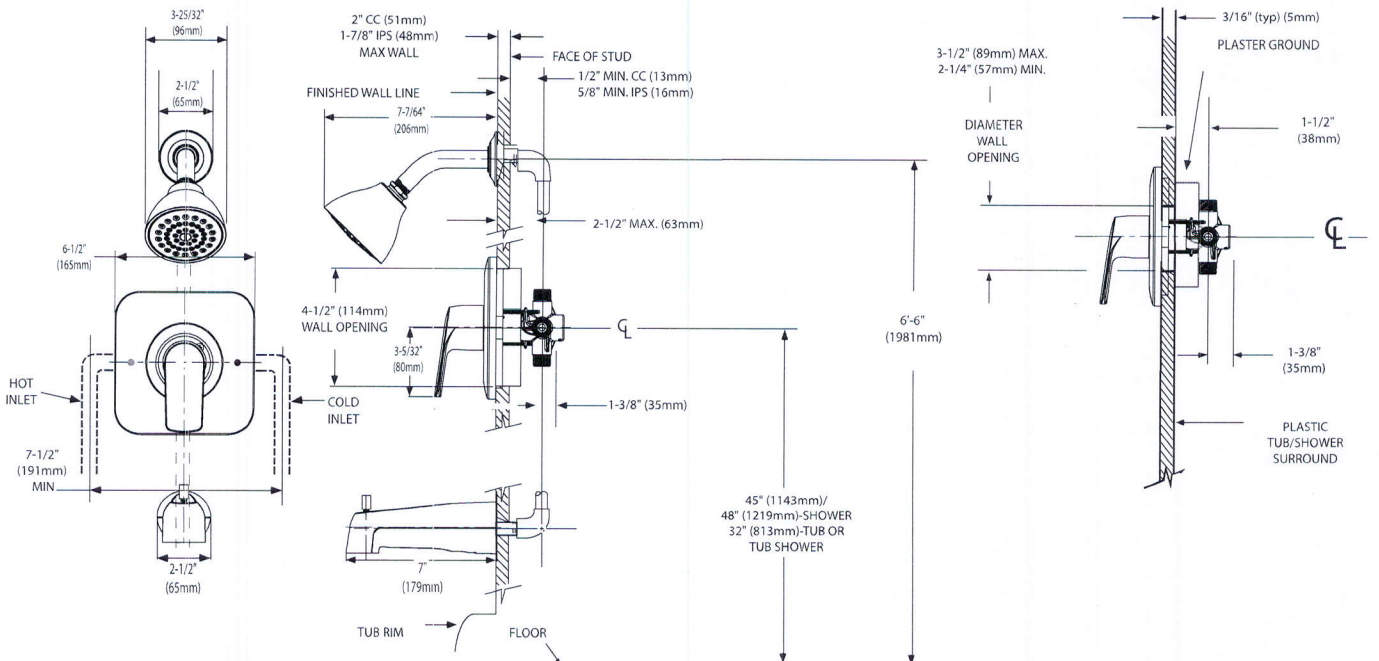
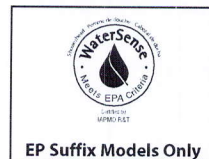
Main Bath: Specifications



RIZON™ POSI-TEMP® Single-Handle Tub/Shower Trim Kit

Model: T2811 series - valve trim only
T2812 series - shower trim only
T2813 series - tub/shower trim only

Valves: 62300, 2500 series



THICK WALL APPLICATION

CRITICAL DIMENSIONS (DO NOT SCALE)

THIN WALL APPLICATION