

PMH 2021 (SPRING)
Condo Project: 330 Richmond
2611 LEVEL 22
MODEL C683

RECEIVED
OCT 02 2020

INTERIOR

INTERIOR DESIGN
FLOORING THROUGHOUT
INTERIOR DOORS
TRIM THROUGHOUT
BLINDS THROUGH OUT
FIXED LIGHTING FIXTURES THROUGHOUT
KITCHEN CABINETRY THROUGH OUT
BATH CABINETRY THROUGH OUT
BEDROOM FEATURE WALL AND CLOSET CABINETRY
CABINETRY HARDWARE THROUGH OUT
KITCHEN COUNTERTOP & BACKSPLASH
BATH COUNTERTOP
FLOOR TILES & TUB ENCLOSURE WALL TILE
PLUMBING FIXTURES
BATHROOM ACCESSORIES
KITCHEN SINK
BATHROOM SINK
TUB
TOILET
TUB ENCLOSURE
PAINT COLOUR
FEATURE WALL PAINT COLOUR
FEATURE WALLPAPER
ART THROUGH OUT
BEDDING THROUGH OUT
MATTRESS
ACCESSORIES THROUGH OUT

ALEXANDRA AVERSA/GREENPARK GROUP

7" TORLYS CORKWOOD ELITE RIVER RUN OAK CW-EL522-FSC-MX, FRONTIER FLOORING - ~~W/C~~

3 PANELITE EQUAL W GLAZING, MASONITE *

2 3/4" CASING, 4 1/4 BASEBOARDS FLAT, EXCLUSIVE CARPENTRY - STD.

DELOR WINDOW COVERINGS

UNION LIGHTING & FURNISHINGS

ARUBA L611XZ4, SELBA KITCHENS + BATHS *

ARUBA L611XZ4, SELBA KITCHENS + BATHS *

TBD

TBD

CALACATTA SM (Q), MAJESTIC MARBLE *

ATENA (Q), MAJESTIC MARBLE *

RMD CALCATTA BRILL 10X30, PREMIER CERAMICS *

90 DEGREE MOEN, D.ZENTIL *

90 DEGREE MOEN (ROBE HOOK, PAPER HOLDER, TOWEL BAR), D.ZENTIL *

KSS-014, CANTRIO STD

PS-106, CANTRIO STD

VISION 31 VN32, TUBCO STD.

CONTRAC, D.ZENTIL

10 MM TEMPERED GLASS TUB SHIELD CHROME, MIRRIOR INTERIORS INC. -

TRIM & DOORS & CEILINGS, BIRCH WHITE STD.

TBD

TBD

TBD

TBD

TBD

TBD

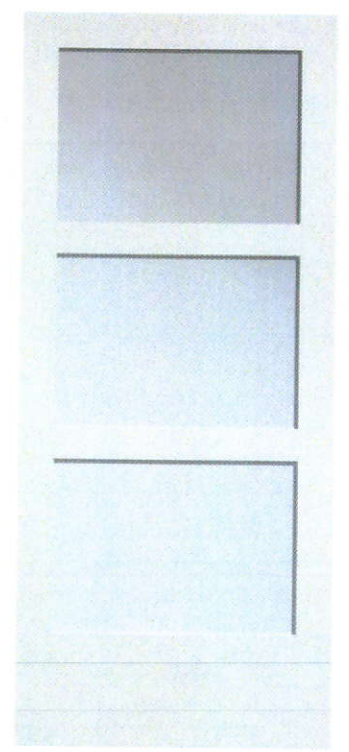
**FURNITURE THROUGH OUT
LIVING ROOM**

**DINING
BEDROOM**

[illegible]



Back to Search



3 Panelite Equal (C30 w/glazing)

French

Interior French 3 Panelite Equal

Glass Options

Designs

- Austin
- Bamboo
- Bronze Tint
- Classic Aquatex
- Cross Reed

Specie Options

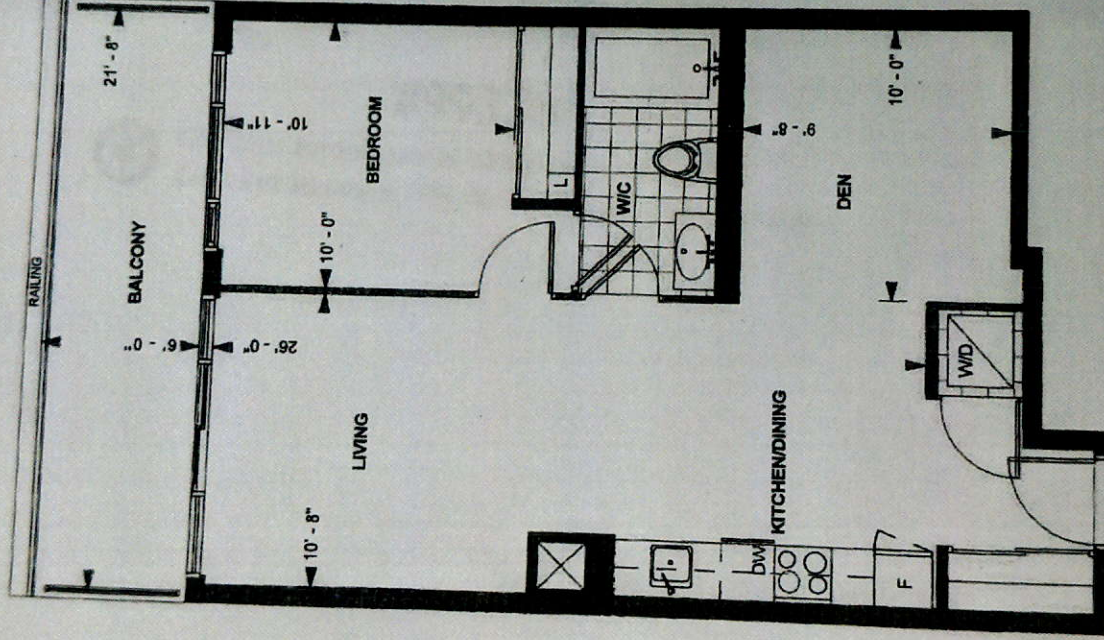
Available in the following

- Hemlock
- Hickory
- Knotty Alder
- Knotty Pine
- Mahogany

SCHEDULE 'A'

330

RICHMOND



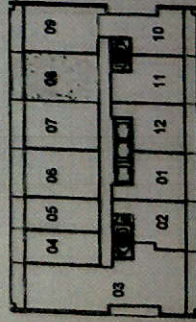
TOWER SUITE

C 683

9' CEILING *

683 sq. ft.

1-BEDROOM PLUS DEN



LEVEL 21-22

SEPTEMBER 27, 2019

March 4, 2020

Purchaser Initials DM Purchaser Initials DM Date March 4, 2020

Unit No. 08 Level No. 22 Suite No. 2611

Dimensions, specification, life floor pattern and architectural detailing (including window size and location) are approximate and subject to modifications without notice. Orientation of suite may vary from the actual floor area. Ceiling height measured from top of floor slab to underside of slab above before finishes, and excluding bulkheads and required drop ceilings. E.O.E.