

NOT THE GRANTING OF A PERMIT NOR REVIEWING OF SPECS & DRAWINGS NOR INSPECTIONS MADE DURING INSTALLATION BY THE OFFICIAL HAVING JURISDICTION SHALL RELIEVE THE OWNER FROM REQUIREMENTS OF THE ONTARIO BUILDING CODE AND ANY OTHER REFERENCED REQUIREMENTS.

Block 120 Units 19 to 24



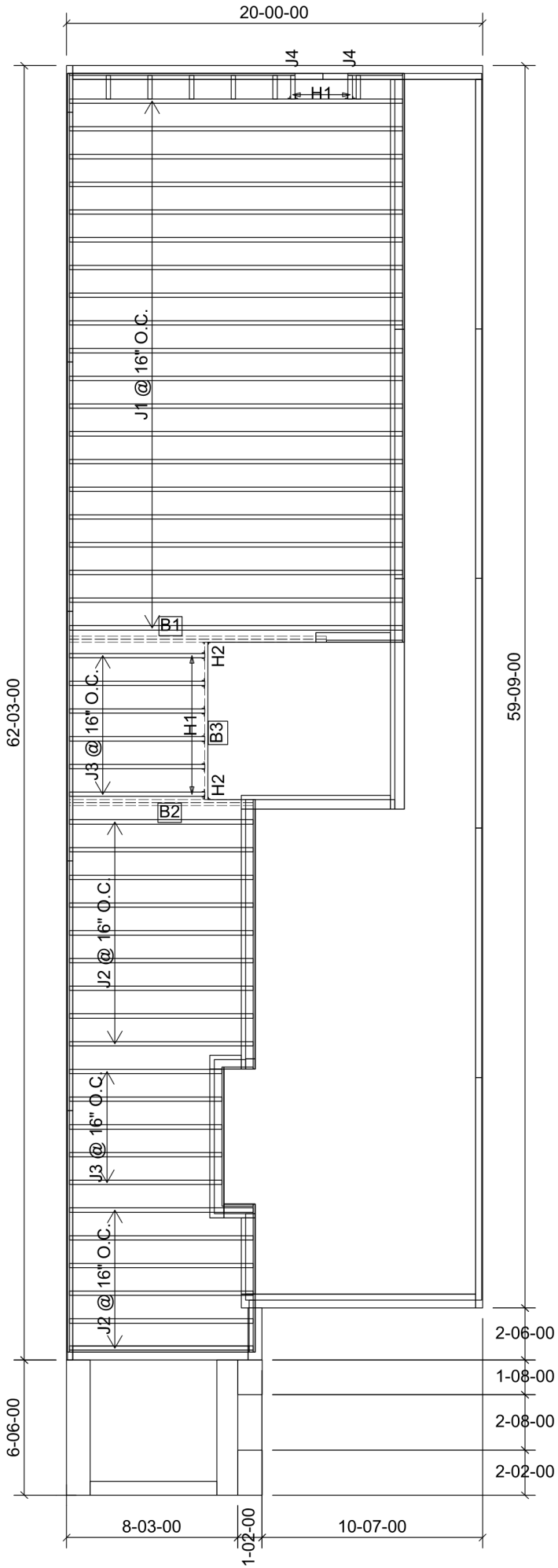
FROM PLAN DATED: 2022/06
BUILDER: GREENPARK HOMES
SITE: BARLASSINA CONSTRUCTION
MODEL: CHERRY 2
ELEVATION: 1,2
LOT:
CITY: CAMBRIDGE
SALESMAN: RICK DICIANO
DESIGNER: AJ
REVISION:

REFER TO THE **NORDIC INSTALLATION** GUIDE FOR PROPER STORAGE AND INSTALLATION.
SQUASH BLOCKS OF 2x4, 2x6, 2x8 SPF #2 REQ'D UNDER INTERIOR UNIFORM LOAD BEARING WALLS. **MULTIPLE SQUASH BLOCKS** REQ'D UNDER CONCENTRATED LOADS. SEE FIGURE 1.
CANTILEVERED JOISTS INCLUDING **CANT' OVER BRICK** REQ. I-JOIST BLOCKING ALONG BEARING AND RIMBOARD CLOSURE AT ENDS. SEE FIGURES 4/5 FOR REINFORCEMENT REQUIREMENTS.
FOR **HOLES** INCLUDING **DUCT CHASE** AND **FIELD CUT OPENINGS** SEE FIGURE 6 AND TABLES 6.1/6.2.
CERAMIC TILE APPLICATION AS PER OBC 9.30.6.

ALL **CONNECTORS** MUST BE INSTALLED AS PER THE **MANUFACTURER'S SPECIFICATIONS** USING THE MANUFACTURER **SPECIFIED FASTENERS**.
ALL **BEAM HANGER FASTENERS** INSTALLED INTO THE **SUPPORTING MEMBER MUST** BE A MINIMUM OF **3.5"** IN LENGTH UNLESS OTHERWISE SPECIFIED BY THE SUPPORTING MEMBER ENGINEER OF RECORD.

LOADING:
LIVE LOAD: 40.0 lb/ft²
DEAD LOAD: 15.0 lb/ft²
TILE LOAD: +5.0 lb/ft²

JOIST LL DEFLECTION LIMIT: L/480
SUBFLOOR: 3/4" GLUED AND NAILED



Products				
PlotID	Length	Product	Plies	Net Qty
J1	18-00-00	11 7/8" NI-40x	1	20
J2	10-00-00	11 7/8" NI-40x	1	15
J3	8-00-00	11 7/8" NI-40x	1	11
J4	2-00-00	11 7/8" NI-40x	1	2
B1	14-00-00	1 3/4" x 11 7/8" (2.0E 3100) WestFraser LVL	2	2
B2	10-00-00	1 3/4" x 11 7/8" (2.0E 3100) WestFraser LVL	2	2
B3	8-00-00	1 3/4" x 11 7/8" (2.0E 3100) WestFraser LVL	1	1

Connector Summary		
Qty	Manuf	Product
6	H1	IUS2.56/11.88
2	H1	IUS2.56/11.88
2	H2	HUS1.81/10

DWG# TF22081027 TO TF22081029



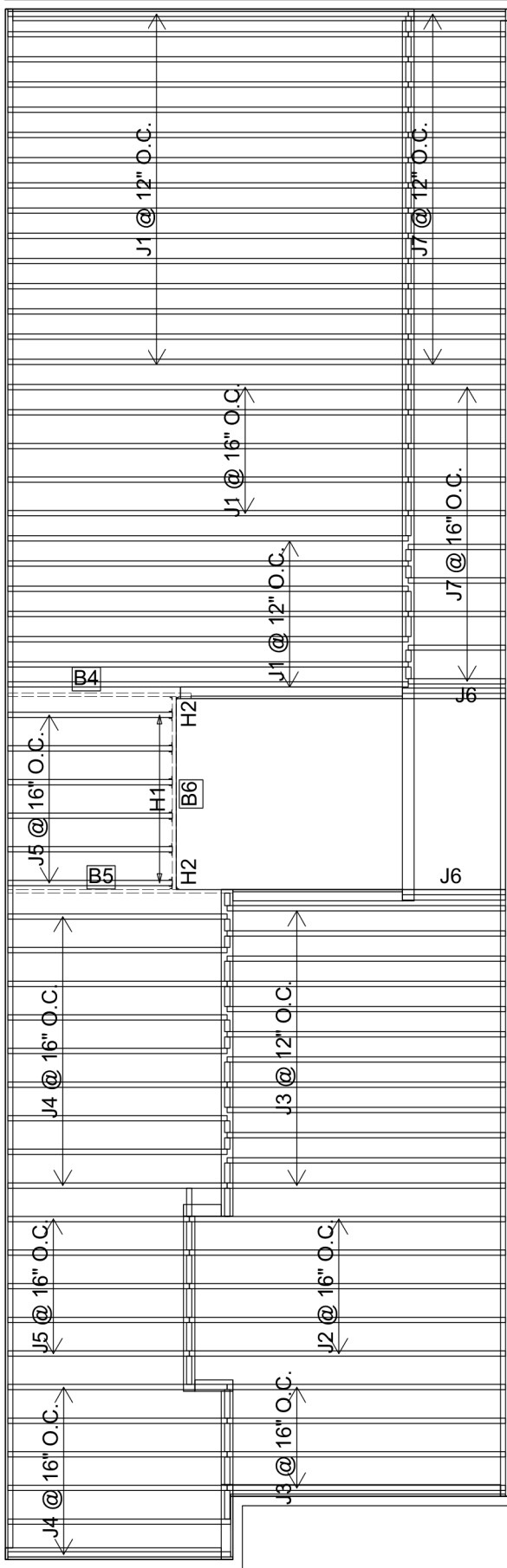
STRUCTURAL COMPONENTS ONLY
DWG# TF22081033

THIS IS A FLOOR COMPONENT
PLACEMENT PLAN ONLY.

The wood beams and joists outlined on this plan are designed as individual building components to be incorporated into the design of the building at the specification of the building designer. Please see the individual beam reports, joist reports, and/or joist span tables for each component identified on this placement plan.
The supporting structure is to be specified by the building designer prior to the installation of joist(s) and/or beam(s). The building designer is responsible for the bracing of the floor system and its integration into the bracing of the overall structure. All components labelled "by others" or "as per plan", and all steel beams, are not within the scope of work of this seal.
The building designer must review and approve this plan to ascertain conformity to the overall structural plan of the building. All dimensions to be verified on site.

DATE: 2022-07-30

1st FLOOR FRAMING



NOT THE GRANTING OF A PERMIT NOR REVIEWING OF SPECS & DRAWINGS NOR INSPECTIONS MADE DURING INSTALLATION BY THE OFFICIAL HAVING JURISDICTION SHALL RELIEVE THE OWNER FROM REQUIREMENTS OF THE ONTARIO BUILDING CODE AND ANY OTHER REFERENCED REQUIREMENTS.

Products				
PlotID	Length	Product	Plies	Net Qty
J1	16-00-00	11 7/8" NI-40x	1	27
J2	14-00-00	11 7/8" NI-40x	1	5
J3	12-00-00	11 7/8" NI-40x	1	16
J4	10-00-00	11 7/8" NI-40x	1	15
J5	8-00-00	11 7/8" NI-40x	1	11
J6	6-00-00	11 7/8" NI-40x	2	4
J7	4-00-00	11 7/8" NI-40x	1	25
B5	10-00-00	1 3/4" x 11 7/8" (2.0E 3100) WestFraser LVL	1	1
B4	8-00-00	1 3/4" x 11 7/8" (2.0E 3100) WestFraser LVL	1	1
B6	8-00-00	1 3/4" x 11 7/8" (2.0E 3100) WestFraser LVL	1	1

Connector Summary		
Qty	Manuf	Product
6	H1	IUS2.56/11.88
2	H2	HUS1.81/10

DWG# TF22081030 TO TF22081032



STRUCTURAL COMPONENTS ONLY
DWG# TF22081034

THIS IS A FLOOR COMPONENT
PLACEMENT PLAN ONLY.

The wood beams and joists outlined on this plan are designed as individual building components to be incorporated into the design of the building at the specification of the building designer. Please see the individual beam reports, joist reports, and/or joist span tables for each component identified on this placement plan. The supporting structure is to be specified by the building designer prior to the installation of joist(s) and/or beam(s). The building designer is responsible for the bracing of the floor system and its integration into the bracing of the overall structure. All components labelled "by others" or "as per plan", and all steel beams, are not within the scope of work of this seal. The building designer must review and approve this plan to ascertain conformity to the overall structural plan of the building. All dimensions to be verified on site.

DATE: 2022-08-10

2nd FLOOR FRAMING

Block 120 Units 19 to 24



FROM PLAN DATED: 2022/06
BUILDER: GREENPARK HOMES
SITE: BARLASSINA CONSTRUCTION
MODEL: CHERRY 2
ELEVATION: 1,2
LOT:
CITY: CAMBRIDGE
SALESMAN: RICK DICIANO
DESIGNER: AJ
REVISION:

REFER TO THE **NORDIC INSTALLATION** GUIDE FOR PROPER STORAGE AND INSTALLATION. **SQUASH BLOCKS** OF 2x4, 2x6, 2x8 SPF #2 REQ'D UNDER INTERIOR UNIFORM LOAD BEARING WALLS. **MULTIPLE SQUASH BLOCKS** REQ'D UNDER CONCENTRATED LOADS. SEE FIGURE 1. **CANTILEVERED JOISTS** INCLUDING **CANT' OVER BRICK** REQ. I-JOIST BLOCKING ALONG BEARING AND RIMBOARD CLOSURE AT ENDS. SEE FIGURES 4/5 FOR REINFORCEMENT REQUIREMENTS. FOR **HOLES** INCLUDING **DUCT CHASE** AND **FIELD CUT OPENINGS** SEE FIGURE 6 AND TABLES 6.1/6.2. **CERAMIC TILE** APPLICATION AS PER OBC 9.30.6.

ALL **CONNECTORS** MUST BE INSTALLED AS PER THE **MANUFACTURER'S SPECIFICATIONS** USING THE MANUFACTURER **SPECIFIED FASTENERS**. ALL **BEAM HANGER FASTENERS** INSTALLED INTO THE **SUPPORTING MEMBER MUST** BE A MINIMUM OF **3.5"** IN LENGTH UNLESS OTHERWISE SPECIFIED BY THE SUPPORTING MEMBER ENGINEER OF RECORD.

LOADING:
LIVE LOAD: 40.0 lb/ft²
DEAD LOAD: 15.0 lb/ft²
TILE LOAD: +5.0 lb/ft²

JOIST LL DEFLECTION LIMIT: L/480
SUBFLOOR: 5/8" GLUED AND NAILED



BUILDER: **GREENPARK HOMES**
SITE: **BARLASSINA CONSTRUCTION**
MODEL: **CHERRY 2**
CITY: **CAMBRIDGE**

Job Name: **CHERRY 2 EL 1**
Level: **1ST FLR FRAMING**
Label: **B1 - i1589**
Type: **Beam**

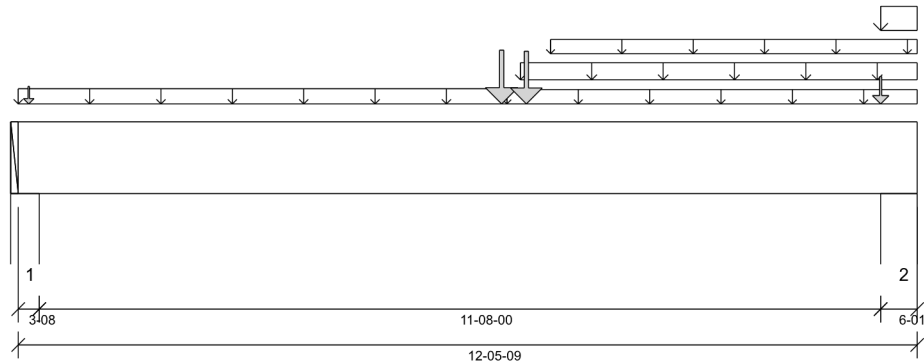
2 Ply Member
1 3/4" x 11 7/8" (2.0E 3100)
WestFraser LVL

Status:
Design Passed

Illustration Not to Scale. Pitch: 0/12

Designed by Single Member Design Engine in MiTek® Structure Version 8.5.3.233.Update5.15

Report Version: 2021.03.26 08/17/2022 08:56



DESIGN INFORMATION

Building Code: NBCC 2015, Part9, BCBC 2018, ABC 2019, OBC 2012 (2019 Amendment)

Design Methodology: LSD

Service Condition: Dry

LL Deflection Limit: L/360,

TL Deflection Limit: L/240,

Lateral Restraint Requirements:

Both ends of the member and the outer supports must be laterally restrained. Top and bottom edges of the member must be fully restrained or have the following maximum unbraced length:

Top: 0' Bottom: 6'- 4 1/16"

Factored Resistance of Support Material:

- 615 psi Wall @ 0'- 2 1/2"
- 615 psi Wall @ 12'- 1/2"

PLY TO PLY CONNECTION:
4 ROWS OF 3.25" PNEUMATIC GUN NAILS (0.120"x3.25") @ 12" O/C

PLY TO PLY CONNECTION ASSUMES ANY SUPPORTED BEAM HANGERS ARE FASTENED TO THIS BEAM WITH MIN. 3.5" FASTENERS.

ANALYSIS RESULTS

Design Criteria	Location	Load Combination	LDF	Design	Limit	Result
Factored Pos. Moment:	6'- 8 7/16"	1.25D + 1.5L	1.00	18441 lb ft	35345 lb ft	Passed - 52%
Factored Shear:	10'- 11 5/8"	1.25D + 1.5L	1.00	3905 lb	13815 lb	Passed - 28%
Live Load (LL) Pos. Defl.:	6'- 4 1/16"	L		0.178"	L/360	Passed - L/786
Total Load (TL) Pos. Defl.:	6'- 4 1/4"	D + L		0.292"	L/240	Passed - L/480

SUPPORT AND REACTION INFORMATION

ID	Input Bearing Length	Controlling Load Combination	LDF	Factored Downward Reaction	Factored Uplift Reaction	Factored Resistance of Member	Factored Resistance of Support	Result
1	3-08	1.25D + 1.5L	1.00	3379 lb		12740 lb	7536 lb	Passed - 45%
2	6-01	1.25D + 1.5L	1.00	5355 lb		22131 lb	13091 lb	Passed - 41%

SPECIFIED LOADS

Type	Start Loc	End Loc	Source	Face	Dead (D)	Live (L)	Snow (S)	Wind (W)
Self Weight	0'	12'- 5 9/16"	Self Weight	Top	12 lb/ft	-	-	-
Uniform	0'	6'- 9 5/16"	FC1 Floor Decking (Plan View Fill)	Top	13 lb/ft	27 lb/ft	-	-
Uniform	6'- 9 5/16"	12'- 5 9/16"	FC1 Floor Decking (Plan View Fill)	Top	7 lb/ft	14 lb/ft	-	-
Uniform	6'- 11 9/16"	12'- 5 9/16"	11(i121)	Top	81 lb/ft	-	-	-
Uniform	7'- 4 9/16"	12'- 5 9/16"	11(i121)	Top	8 lb/ft	11 lb/ft	-	-
Uniform	11'- 11 1/2"	12'- 5 9/16"	User Load	Top	80 lb/ft	160 lb/ft	-	-
Point	6'- 8 7/16"	6'- 8 7/16"	B3(i1571)	Front	710 lb	1377 lb	-	-
Point	0'- 1 3/4"	0'- 1 3/4"	E7(i105)	Top	136 lb	80 lb	-	-
Point	7'- 9/16"	7'- 9/16"	11(i121)	Top	706 lb	1324 lb	-	-
Point	11'- 11 1/2"	11'- 11 1/2"	User Load	Top	240 lb	480 lb	-	-

UNFACTORED REACTIONS

ID	Start Loc	End Loc	Source	Dead (D)	Live (L)	Snow (S)	Wind (W)
1	0'	0'- 3 1/2"	W5(i13)	986 lb	1396 lb	-	-
2	11'- 11 1/2"	12'- 5 9/16"	1(i27)	1611 lb	2262 lb	-	-

DESIGN NOTES

- The dead loads used in the design of this member were applied to the structure as sloped dead loads.
- Lateral stability factor (KL) was based on user preference to use the width of all plies. (Consult with manufacturer for guideline pertaining to this design option.)
- Analysis and Design has been performed using precision loading from actual modeled conditions. Some loads may have been modified to simplify reporting.
- Tributary Loads have been generated based on actual spacing between members in the model which may differ from the default system spacing. The actual loads applied to the member are shown in the Specified Loads table.
- Transfer reactions may differ from design results as allowed per building codes and standard load distribution practices.
- This report is based on modeled conditions input by the user. Source information for the loads and supports are provided for reference only. Verify that all loads and support conditions are correct.
- Review all loads and reactions to ensure that the member/bearing/connector/structure can resist adequately. Unless already specified on this report, anchorage for uplift reactions to be specified by others. Installation of member and accessories (if required) as per manufacturer's instruction.
- When the applied loads are coming from a member/post/wall above that does not sit directly on this beam, adequate load transfer elements, such as squash blocks, wall studs, or beveled plates are required to transfer the loads to this beam.

PLY TO PLY CONNECTION

- Member design assumed proper ply to ply connection by others. Fastener spacing along length of member must not exceed 4 times depth of member. Verify connection between plies according to code specification and follow the manufacturer's installation instruction. Loads assumed to be distributed equally to each ply.



STRUCTURAL COMPONENT ONLY
DWG # TF22081027



BUILDER: **GREENPARK HOMES**
SITE: **BARLASSINA CONSTRUCTION**
MODEL: **CHERRY 2**
CITY: **CAMBRIDGE**

Job Name: **CHERRY 2 EL 1**
Level: **1ST FLR FRAMING**
Label: **B2 - i1596**
Type: **Beam**

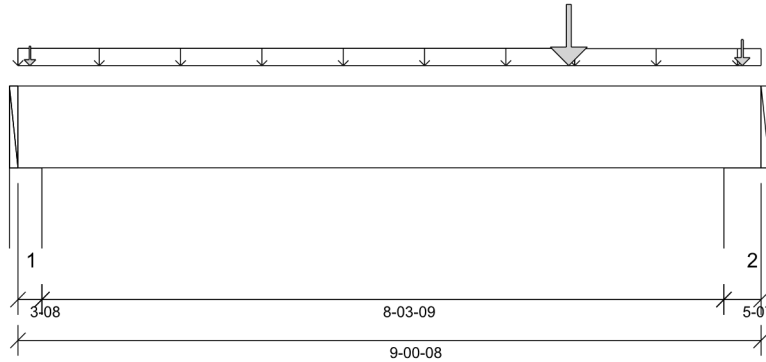
2 Ply Member
1 3/4" x 11 7/8" (2.0E 3100)
WestFraser LVL

Status:
Design Passed

Illustration Not to Scale. Pitch: 0/12

Designed by Single Member Design Engine in MiTek® Structure Version
8.5.3.233.Update5.15

Report Version: 2021.03.26 08/17/2022 08:56



DESIGN INFORMATION

Building Code: NBCC 2015, Part9, BCBC 2018, ABC 2019, OBC 2012 (2019 Amendment)

Design Methodology: LSD

Service Condition: Dry

LL Deflection Limit: L/360,

TL Deflection Limit: L/240,

Lateral Restraint Requirements:

Both ends of the member and the outer supports must be laterally restrained. Top and bottom edges of the member must be fully restrained or have the following maximum unbraced length:

Top: 0' Bottom: 6'- 4 1/16"

Factored Resistance of Support Material:

- 615 psi Wall @ 0'- 2 1/2"
- 615 psi Wall @ 8'- 8 1/16"

ANALYSIS RESULTS

Design Criteria	Location	Load Combination	LDF	Design	Limit	Result
Factored Pos. Moment:	6'- 8 7/16"	1.25D + 1.5L	1.00	4938 lb ft	35345 lb ft	Passed - 14%
Factored Shear:	7'- 7 3/16"	1.25D + 1.5L	1.00	2552 lb	13815 lb	Passed - 18%
Live Load (LL) Pos. Defl.:	4'- 10 11/16"	L		0.024"	L/360	Passed - L/999
Total Load (TL) Pos. Defl.:	4'- 10 1/2"	D + L		0.038"	L/240	Passed - L/999

SUPPORT AND REACTION INFORMATION

ID	Input Bearing Length	Controlling Load Combination	LDF	Factored Downward Reaction	Factored Uplift Reaction	Factored Resistance of Member	Factored Resistance of Support	Result
1	3-08	1.25D + 1.5L	1.00	1279 lb		12740 lb	7536 lb	Passed - 17%
2	5-07	1.25D + 1.5L	1.00	3338 lb		19754 lb	11685 lb	Passed - 29%

SPECIFIED LOADS

Type	Start Loc	End Loc	Source	Face	Dead (D)	Live (L)	Snow (S)	Wind (W)
Self Weight	0'	9'- 1/2"	Self Weight	Top	12 lb/ft	-	-	-
Uniform	0'	6'- 9 5/16"	FC1 Floor Decking (Plan View Fill)	Top	13 lb/ft	27 lb/ft	-	-
Uniform	6'- 9 5/16"	9'- 1/2"	FC1 Floor Decking (Plan View Fill)	Top	11 lb/ft	22 lb/ft	-	-
Point	6'- 8 7/16"	6'- 8 7/16"	B3(i1571)	Back	728 lb	1412 lb	-	-
Point	0'- 1 3/4"	0'- 1 3/4"	E7(i105)	Top	112 lb	86 lb	-	-
Point	8'- 9 3/4"	8'- 9 3/4"	5(i117)	Top	193 lb	305 lb	-	-

UNFACTORED REACTIONS

ID	Start Loc	End Loc	Source	Dead (D)	Live (L)	Snow (S)	Wind (W)
1	0'	0'- 3 1/2"	W5(i13)	389 lb	522 lb	-	-
2	8'- 7 1/16"	9'- 1/2"	W13(i24)	866 lb	1511 lb	-	-

DESIGN NOTES

- The dead loads used in the design of this member were applied to the structure as sloped dead loads.
- Lateral stability factor (KL) was based on user preference to use the width of all plies. (Consult with manufacturer for guideline pertaining to this design option.)
- Analysis and Design has been performed using precision loading from actual modeled conditions. Some loads may have been modified to simplify reporting.
- Tributary Loads have been generated based on actual spacing between members in the model which may differ from the default system spacing. The actual loads applied to the member are shown in the Specified Loads table.
- Transfer reactions may differ from design results as allowed per building codes and standard load distribution practices.
- This report is based on modeled conditions input by the user. Source information for the loads and supports are provided for reference only. Verify that all loads and support conditions are correct.
- Review all loads and reactions to ensure that the member/bearing/connector/structure can resist adequately. Unless already specified on this report, anchorage for uplift reactions to be specified by others. Installation of member and accessories (if required) as per manufacturer's instruction.
- When the applied loads are coming from a member/post/wall above that does not sit directly on this beam, adequate load transfer elements, such as squash blocks, wall studs, or beveled plates are required to transfer the loads to this beam.

PLY TO PLY CONNECTION

- Member design assumed proper ply to ply connection by others. Fastener spacing along length of member must not exceed 4 times depth of member. Verify connection between plies according to code specification and follow the manufacturer's installation instruction. Loads assumed to be distributed equally to each ply.



STRUCTURAL COMPONENT ONLY
DWG # TF22081028



BUILDER: **GREENPARK HOMES**
SITE: **BARLASSINA CONSTRUCTION**
MODEL: **CHERRY 2**
CITY: **CAMBRIDGE**

Job Name: **CHERRY 2 EL 1**
Level: **1ST FLR FRAMING**
Label: **B3 - i1571**
Type: **Beam**

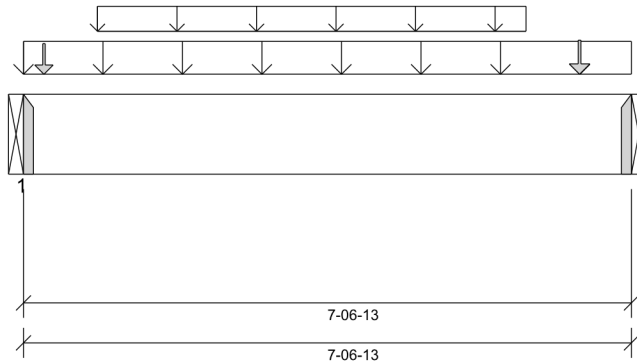
1 Ply Member
1 3/4" x 11 7/8" (2.0E 3100)
WestFraser LVL

Status:
**Design
Passed**

Illustration Not to Scale. Pitch: 0/12

Designed by Single Member Design Engine in MiTek® Structure Version
8.5.3.233.Update5.15

Report Version: 2021.03.26 08/17/2022 08:56



DESIGN INFORMATION

Building Code: NBCC 2015, Part9, BCBC 2018,
ABC 2019, OBC 2012 (2019
Amendment)

Design Methodology: LSD

Service Condition: Dry

LL Deflection Limit: L/360,

TL Deflection Limit: L/240,

Lateral Restraint Requirements:

Both ends of the member and the outer supports
must be laterally restrained. Top and bottom edges
of the member must be fully restrained or have the
following maximum unbraced length:

Top: 0' Bottom: 1'- 1 1/2"

Factored Resistance of Support Material:

- 615 psi Beam @ 0'
- 615 psi Beam @ 7'- 6 13/16"

ANALYSIS RESULTS

Design Criteria	Location	Load Combination	LDF	Design	Limit	Result
Factored Pos. Moment:	3'- 10 11/16"	1.25D + 1.5L	1.00	5695 lb ft	17672 lb ft	Passed - 32%
Factored Shear:	0'- 11 7/8"	1.25D + 1.5L	1.00	2261 lb	6908 lb	Passed - 33%
Live Load (LL) Pos. Defl.:	3'- 9 7/16"	L		0.058"	L/360	Passed - L/999
Total Load (TL) Pos. Defl.:	3'- 9 7/16"	D + L		0.088"	L/240	Passed - L/999

SUPPORT AND REACTION INFORMATION

ID	Input Bearing Length	Controlling Load Combination	LDF	Factored Downward Reaction	Factored Uplift Reaction	Factored Resistance of Member	Factored Resistance of Support	Result
1	1-11	1.25D + 1.5L	1.00	3020 lb		3020 lb	-	Passed - 100%
2	1-10	1.25D + 1.5L	1.00	2962 lb		2962 lb	-	Passed - 100%

CONNECTOR INFORMATION

ID	Part No.	Manufacturer	Nailing Requirements			Other Information or Requirement for Reinforcement Accessories
			Top	Face	Member	
1	HUS1.81/10		-	-	-	Connector manually specified by the user.
2	HUS1.81/10		-	-	-	Connector manually specified by the user.

* Connectors: Refer to manufacturer's specifications, fasteners requirements and installation instruction. Where header fasteners are longer than the width of the supporting member, install backer block or clinch header nails.

SPECIFIED LOADS

Type	Start Loc	End Loc	Source	Face	Dead (D)	Live (L)	Snow (S)	Wind (W)
Self Weight	0'	7'- 6 13/16"	Self Weight	Top	6 lb/ft	-	-	-
Uniform	0'	7'- 6 13/16"	User Load	Top	120 lb/ft	240 lb/ft	-	-
Uniform	0'- 11 1/16"	6'- 3 1/16"	Smoothed Load	Back	67 lb/ft	134 lb/ft	-	-
Point	0'- 3 1/16"	0'- 3 1/16"	J3(i1590)	Back	58 lb	116 lb	-	-
Point	6'- 11 1/16"	6'- 11 1/16"	J3(i1617)	Back	71 lb	142 lb	-	-

UNFACTORED REACTIONS

ID	Start Loc	End Loc	Source	Dead (D)	Live (L)	Snow (S)	Wind (W)
1	0'	0'	B2(i1596)	728 lb	1412 lb	-	-
2	7'- 6 13/16"	7'- 6 13/16"	B1(i1589)	710 lb	1377 lb	-	-

DESIGN NOTES

- The dead loads used in the design of this member were applied to the structure as sloped dead loads.
- Analysis and Design has been performed using precision loading from actual modeled conditions. Some loads may have been modified to simplify reporting.
- Tributary Loads have been generated based on actual spacing between members in the model which may differ from the default system spacing. The actual loads applied to the member are shown in the Specified Loads table.
- Transfer reactions may differ from design results as allowed per building codes and standard load distribution practices.
- This report is based on modeled conditions input by the user. Source information for the loads and supports are provided for reference only. Verify that all loads and support conditions are correct.
- Review all loads and reactions to ensure that the member/bearing/connector/structure can resist adequately. Unless already specified on this report, anchorage for uplift reactions to be specified by others. Installation of member and accessories (if required) as per manufacturer's instruction.
- When the applied loads are coming from a member/post/wall above that does not sit directly on this beam, adequate load transfer elements, such as squash blocks, wall studs, or beveled plates are required to transfer the loads to this beam.



STRUCTURAL COMPONENT ONLY
DWG # TF22081029



BUILDER: **GREENPARK HOMES**
SITE: **BARLASSINA CONSTRUCTION**
MODEL: **CHERRY 2**
CITY: **CAMBRIDGE**

Job Name: **CHERRY 2 EL 1**
Level: **2ND FLR FRAMING**
Label: **B4 - i1501**
Type: **Beam**

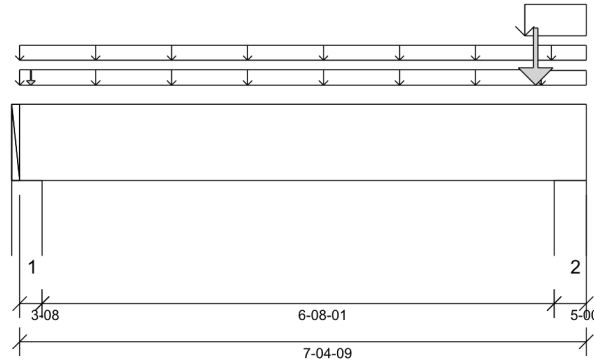
1 Ply Member
1 3/4" x 11 7/8" (2.0E 3100)
WestFraser LVL

Status:
**Design
Passed**

Illustration Not to Scale. Pitch: 0/12

Designed by Single Member Design Engine in MiTek® Structure Version
8.5.3.233.Update5.15

Report Version: 2021.03.26 08/17/2022 08:56



DESIGN INFORMATION

Building Code: NBCC 2015, Part9, BCBC 2018,
ABC 2019, OBC 2012 (2019
Amendment)

Design Methodology: LSD

Service Condition: Dry

LL Deflection Limit: L/360,

TL Deflection Limit: L/240,

Lateral Restraint Requirements:

Both ends of the member and the outer supports
must be laterally restrained. Top and bottom edges
of the member must be fully restrained or have the
following maximum unbraced length:

Top: 0' Bottom: 6'- 4 1/4"

Factored Resistance of Support Material:

- 615 psi Wall @ 0'- 2 1/2"
- 615 psi Wall @ 7'- 9/16"

ANALYSIS RESULTS

Design Criteria	Location	Load Combination	LDF	Design	Limit	Result
Factored Pos. Moment:	5'- 7 7/8"	1.25D + 1.5L	1.00	869 lb ft	17672 lb ft	Passed - 5%
Factored Shear:	5'- 11 11/16"	1.25D + 1.5L	1.00	2443 lb	6908 lb	Passed - 35%
Total Load (TL) Pos. Defl.:	3'- 11 1/8"	D + L		0.011"	L/240	Passed - L/999

SUPPORT AND REACTION INFORMATION

ID	Input Bearing Length	Controlling Load Combination	LDF	Factored Downward Reaction	Factored Uplift Reaction	Factored Resistance of Member	Factored Resistance of Support	Result
1	3-08	1.25D + 1.5L	1.00	351 lb		6370 lb	3768 lb	Passed - 9%
2	5-00	1.25D + 1.5L	1.00	2921 lb		9124 lb	5397 lb	Passed - 54%

SPECIFIED LOADS

Type	Start Loc	End Loc	Source	Face	Dead (D)	Live (L)	Snow (S)	Wind (W)
Self Weight	0'	7'- 4 9/16"	Self Weight	Top	6 lb/ft	-	-	-
Uniform	0'	7'- 4 9/16"	FC2 Floor Decking (Plan View Fill)	Top	4 lb/ft	8 lb/ft	-	-
Uniform	0'	6'- 9 1/2"	FC2 Floor Decking (Plan View Fill)	Top	8 lb/ft	16 lb/ft	-	-
Uniform	6'- 6 15/16"	7'- 4 9/16"	User Load	Top	120 lb/ft	240 lb/ft	-	-
Uniform	6'- 9 1/2"	7'- 4 9/16"	FC2 Floor Decking (Plan View Fill)	Top	3 lb/ft	6 lb/ft	-	-
Point	6'- 8 5/8"	6'- 8 5/8"	B6(i1503)	Front	587 lb	1127 lb	-	-
Point	0'- 1 3/4"	0'- 1 3/4"	E10(i955)	Top	15 lb	-	-	-

UNFACTORED REACTIONS

ID	Start Loc	End Loc	Source	Dead (D)	Live (L)	Snow (S)	Wind (W)
1	0'	0'- 3 1/2"	E7(i105)	122 lb	168 lb	-	-
2	6'- 11 9/16"	7'- 4 9/16"	11(i121)	706 lb	1324 lb	-	-

DESIGN NOTES

- The dead loads used in the design of this member were applied to the structure as sloped dead loads.
- Analysis and Design has been performed using precision loading from actual modeled conditions. Some loads may have been modified to simplify reporting.
- Tributary Loads have been generated based on actual spacing between members in the model which may differ from the default system spacing. The actual loads applied to the member are shown in the Specified Loads table.
- Transfer reactions may differ from design results as allowed per building codes and standard load distribution practices.
- This report is based on modeled conditions input by the user. Source information for the loads and supports are provided for reference only. Verify that all loads and support conditions are correct.
- Review all loads and reactions to ensure that the member/bearing/connector/structure can resist adequately. Unless already specified on this report, anchorage for uplift reactions to be specified by others. Installation of member and accessories (if required) as per manufacturer's instruction.
- When the applied loads are coming from a member/post/wall above that does not sit directly on this beam, adequate load transfer elements, such as squash blocks, wall studs, or beveled plates are required to transfer the loads to this beam.
- Bearing capacity of member at support 1, 2 was verified for the effect of concentrated load applied near the support. At support 2. Required Load Area: L=3.500", W=1.750". LDF=1.00, Pf=2424 lb, Q'r=5165 lb, Result=46.94%.



STRUCTURAL COMPONENT ONLY
DWG # TF22081030



BUILDER: **GREENPARK HOMES**
SITE: **BARLASSINA CONSTRUCTION**
MODEL: **CHERRY 2**
CITY: **CAMBRIDGE**

Job Name: **CHERRY 2 EL 1**
Level: **2ND FLR FRAMING**
Label: **B5 - i1525**
Type: **Beam**

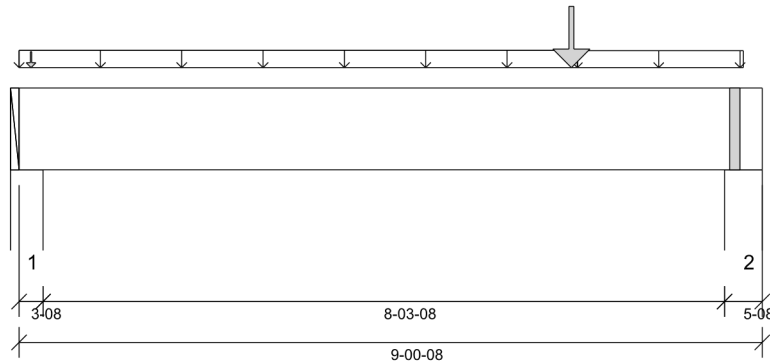
1 Ply Member
1 3/4" x 11 7/8" (2.0E 3100)
WestFraser LVL

Status:
Design Passed

Illustration Not to Scale. Pitch: 0/12

Designed by Single Member Design Engine in MiTek® Structure Version
8.5.3.233.Update5.15

Report Version: 2021.03.26 08/17/2022 08:56



DESIGN INFORMATION

Building Code: NBCC 2015, Part9, BCBC 2018,
ABC 2019, OBC 2012 (2019
Amendment)

Design Methodology: LSD

Service Condition: Dry

LL Deflection Limit: L/360,

TL Deflection Limit: L/240,

Lateral Restraint Requirements:

Both ends of the member and the outer supports
must be laterally restrained. Top and bottom edges
of the member must be fully restrained or have the
following maximum unbraced length:

Top: 0' Bottom: 6'- 4 1/4"

Factored Resistance of Support Material:

- 615 psi Wall @ 0'- 2 1/2"
- 615 psi Wall @ 8'- 8"

ANALYSIS RESULTS

Design Criteria	Location	Load Combination	LDF	Design	Limit	Result
Factored Pos. Moment:	6'- 8 5/8"	1.25D + 1.5L	1.00	2739 lb ft	17672 lb ft	Passed - 15%
Factored Shear:	7'- 7 1/8"	1.25D + 1.5L	1.00	1402 lb	6908 lb	Passed - 20%
Live Load (LL) Pos. Defl.:	4'- 10 1/16"	L		0.028"	L/360	Passed - L/999
Total Load (TL) Pos. Defl.:	4'- 9 15/16"	D + L		0.044"	L/240	Passed - L/999

SUPPORT AND REACTION INFORMATION

ID	Input Bearing Length	Controlling Load Combination	LDF	Factored Downward Reaction	Factored Uplift Reaction	Factored Resistance of Member	Factored Resistance of Support	Result
1	3-08	1.25D + 1.5L	1.00	662 lb		6370 lb	3768 lb	Passed - 18%
2	5-08	1.25D + 1.5L	1.00	1468 lb		10010 lb	5921 lb	Passed - 25%

SPECIFIED LOADS

Type	Start Loc	End Loc	Source	Face	Dead (D)	Live (L)	Snow (S)	Wind (W)
Self Weight	0'	9'- 1/2"	Self Weight	Top	6 lb/ft	-	-	-
Uniform	0'	6'- 9 1/2"	FC2 Floor Decking (Plan View Fill)	Top	13 lb/ft	27 lb/ft	-	-
Uniform	6'- 9 1/2"	8'- 9 3/4"	FC2 Floor Decking (Plan View Fill)	Top	11 lb/ft	21 lb/ft	-	-
Point	6'- 8 5/8"	6'- 8 5/8"	B6(i1503)	Back	385 lb	724 lb	-	-
Point	0'- 1 3/4"	0'- 1 3/4"	E10(i955)	Top	15 lb	-	-	-

UNFACTORED REACTIONS

ID	Start Loc	End Loc	Source	Dead (D)	Live (L)	Snow (S)	Wind (W)
1	0'	0'- 3 1/2"	E7(i105)	186 lb	278 lb	-	-
2	8'- 7"	9'- 1/2"	5(i117)	380 lb	671 lb	-	-

DESIGN NOTES

- The dead loads used in the design of this member were applied to the structure as sloped dead loads.
- Analysis and Design has been performed using precision loading from actual modeled conditions. Some loads may have been modified to simplify reporting.
- Tributary Loads have been generated based on actual spacing between members in the model which may differ from the default system spacing. The actual loads applied to the member are shown in the Specified Loads table.
- Transfer reactions may differ from design results as allowed per building codes and standard load distribution practices.
- This report is based on modeled conditions input by the user. Source information for the loads and supports are provided for reference only. Verify that all loads and support conditions are correct.
- Review all loads and reactions to ensure that the member/bearing/connector/structure can resist adequately. Unless already specified on this report, anchorage for uplift reactions to be specified by others. Installation of member and accessories (if required) as per manufacturer's instruction.
- When the applied loads are coming from a member/post/wall above that does not sit directly on this beam, adequate load transfer elements, such as squash blocks, wall studs, or beveled plates are required to transfer the loads to this beam.



STRUCTURAL COMPONENT ONLY
DWG # TF22081031



BUILDER: **GREENPARK HOMES**
SITE: **BARLASSINA CONSTRUCTION**
MODEL: **CHERRY 2**
CITY: **CAMBRIDGE**

Job Name: **CHERRY 2 EL 1**
Level: **2ND FLR FRAMING**
Label: **B6 - i1503**
Type: **Beam**

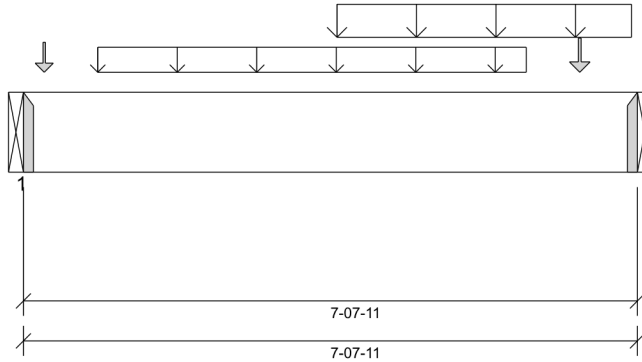
1 Ply Member
1 3/4" x 11 7/8" (2.0E 3100)
WestFraser LVL

Status:
**Design
Passed**

Illustration Not to Scale. Pitch: 0/12

Designed by Single Member Design Engine in MiTek® Structure Version
8.5.3.233.Update5.15

Report Version: 2021.03.26 08/17/2022 08:56



DESIGN INFORMATION

Building Code: NBCC 2015, Part9, BCBC 2018,
ABC 2019, OBC 2012 (2019
Amendment)

Design Methodology: LSD

Service Condition: Dry

LL Deflection Limit: L/360,

TL Deflection Limit: L/240,

Lateral Restraint Requirements:

Both ends of the member and the outer supports
must be laterally restrained. Top and bottom edges
of the member must be fully restrained or have the
following maximum unbraced length:

Top: 0' Bottom: 1'- 1 1/2"

Factored Resistance of Support Material:

- 615 psi Beam @ 0'
- 615 psi Beam @ 7'- 7 11/16"

ANALYSIS RESULTS

Design Criteria	Location	Load Combination	LDF	Design	Limit	Result
Factored Pos. Moment:	4'- 3 1/8"	1.25D + 1.5L	1.00	4072 lb ft	17672 lb ft	Passed - 23%
Factored Shear:	6'- 7 13/16"	1.25D + 1.5L	1.00	1653 lb	6908 lb	Passed - 24%
Live Load (LL) Pos. Defl.:	3'- 11 3/4"	L		0.040"	L/360	Passed - L/999
Total Load (TL) Pos. Defl.:	3'- 11 11/16"	D + L		0.061"	L/240	Passed - L/999

SUPPORT AND REACTION INFORMATION

ID	Input Bearing Length	Controlling Load Combination	LDF	Factored Downward Reaction	Factored Uplift Reaction	Factored Resistance of Member	Factored Resistance of Support	Result
1	1-08	1.25D + 1.5L	1.00	1561 lb		2730 lb	-	Passed - 57%
2	1-08	1.25D + 1.5L	1.00	2431 lb		2730 lb	-	Passed - 89%

CONNECTOR INFORMATION

ID	Part No.	Manufacturer	Nailing Requirements			Other Information or Requirement for Reinforcement Accessories		
			Top	Face	Member			
1	HUS1.81/10		-	-	-	Connector manually specified by the user.		
2	HUS1.81/10		-	-	-	Connector manually specified by the user.		

* Connectors: Refer to manufacturer's specifications, fasteners requirements and installation instruction. Where header fasteners are longer than the width of the supporting member, install backer block or clinch header nails.

SPECIFIED LOADS

Type	Start Loc	End Loc	Source	Face	Dead (D)	Live (L)	Snow (S)	Wind (W)
Self Weight	0'	7'- 7 11/16"	Self Weight	Top	6 lb/ft	-	-	-
Uniform	0'- 11 1/8"	6'- 3 1/8"	Smoothed Load	Back	68 lb/ft	134 lb/ft	-	-
Uniform	3'- 10 13/16"	7'- 6 13/16"	User Load	Front	120 lb/ft	240 lb/ft	-	-
Point	0'- 3 1/8"	0'- 3 1/8"	J5(i1480)	Back	56 lb	112 lb	-	-
Point	6'- 11 1/8"	6'- 11 1/8"	J5(i1495)	Back	71 lb	143 lb	-	-

UNFACTORED REACTIONS

ID	Start Loc	End Loc	Source	Dead (D)	Live (L)	Snow (S)	Wind (W)
1	0'	0'	B5(i1525)	385 lb	724 lb	-	-
2	7'- 7 11/16"	7'- 7 11/16"	B4(i1501)	587 lb	1127 lb	-	-

DESIGN NOTES

- The dead loads used in the design of this member were applied to the structure as sloped dead loads.
- Analysis and Design has been performed using precision loading from actual modeled conditions. Some loads may have been modified to simplify reporting.
- Tributary Loads have been generated based on actual spacing between members in the model which may differ from the default system spacing. The actual loads applied to the member are shown in the Specified Loads table.
- Transfer reactions may differ from design results as allowed per building codes and standard load distribution practices.
- This report is based on modeled conditions input by the user. Source information for the loads and supports are provided for reference only. Verify that all loads and support conditions are correct.
- Review all loads and reactions to ensure that the member/bearing/connector/structure can resist adequately. Unless already specified on this report, anchorage for uplift reactions to be specified by others. Installation of member and accessories (if required) as per manufacturer's instruction.
- When the applied loads are coming from a member/post/wall above that does not sit directly on this beam, adequate load transfer elements, such as squash blocks, wall studs, or beveled plates are required to transfer the loads to this beam.



STRUCTURAL COMPONENT ONLY
DWG # TF22081032

Maximum Floor Spans – S2.1

Design Criteria

Spans:	Simple span
Loads:	Live load = 40 psf and dead load = 15 psf
Deflection limits:	L/480 under live load and L/240 under total load
Sheathing:	5/8 in. nailed-glued oriented strand board (OSB) sheathing

Maximum Floor Spans

Joist depth	Joist series	Bare On centre spacing				1/2 in. gypsum ceiling On centre spacing			
		12"	16"	19.2"	24"	12"	16"	19.2"	24"
9-1/2"	NI-20	15'-1"	14'-3"	13'-10"	-	15'-7"	14'-9"	14'-3"	-
	NI-40x	16'-2"	15'-3"	14'-8"	-	16'-7"	15'-8"	15'-1"	-
	NI-60	16'-4"	15'-4"	14'-10"	-	16'-9"	15'-9"	15'-3"	-
	NI-80	17'-3"	16'-3"	15'-8"	-	17'-8"	16'-7"	16'-0"	-
11-7/8"	NI-20	17'-0"	16'-0"	15'-6"	-	17'-6"	16'-7"	16'-0"	-
	NI-40x	18'-2"	17'-1"	16'-6"	-	18'-9"	17'-6"	16'-11"	-
	NI-60	18'-5"	17'-3"	16'-8"	-	19'-0"	17'-8"	17'-1"	-
	NI-80	19'-9"	18'-3"	17'-7"	-	20'-4"	18'-10"	18'-0"	-
	NI-90	20'-2"	18'-8"	17'-10"	-	20'-9"	19'-2"	18'-4"	-
14"	NI-40x	20'-1"	18'-8"	17'-10"	-	20'-10"	19'-4"	18'-6"	-
	NI-60	20'-6"	18'-11"	18'-2"	-	21'-2"	19'-8"	18'-9"	-
	NI-80	21'-11"	20'-3"	19'-4"	-	22'-7"	20'-11"	20'-0"	-
	NI-90	22'-5"	20'-8"	19'-9"	-	23'-0"	21'-4"	20'-4"	-
16"	NI-60	22'-4"	20'-8"	19'-9"	-	23'-1"	21'-5"	20'-6"	-
	NI-80	23'-11"	22'-1"	21'-1"	-	24'-8"	22'-10"	21'-9"	-
	NI-90	24'-5"	22'-6"	21'-6"	-	25'-1"	23'-2"	22'-2"	-

Joist depth	Joist series	Mid-span blocking with 1x4 inch strap On centre spacing				Mid-span blocking and 1/2 in. gypsum ceiling On centre spacing			
		12"	16"	19.2"	24"	12"	16"	19.2"	24"
9-1/2"	NI-20	16'-8"	15'-3"	14'-5"	-	16'-8"	15'-3"	14'-5"	-
	NI-40x	17'-11"	17'-0"	16'-1"	-	18'-5"	17'-1"	16'-1"	-
	NI-60	18'-2"	17'-1"	16'-4"	-	18'-8"	17'-4"	16'-4"	-
	NI-80	19'-5"	18'-0"	17'-5"	-	19'-10"	18'-5"	17'-8"	-
11-7/8"	NI-20	19'-7"	18'-2"	17'-3"	-	19'-11"	18'-3"	17'-3"	-
	NI-40x	21'-1"	19'-7"	18'-8"	-	21'-8"	20'-2"	19'-2"	-
	NI-60	21'-4"	19'-9"	18'-11"	-	21'-11"	20'-5"	19'-6"	-
	NI-80	22'-9"	21'-1"	20'-2"	-	23'-3"	21'-8"	20'-8"	-
	NI-90	23'-3"	21'-6"	20'-6"	-	23'-9"	22'-0"	21'-0"	-
14"	NI-40x	23'-8"	21'-11"	20'-11"	-	24'-4"	22'-8"	21'-8"	-
	NI-60	24'-0"	22'-3"	21'-3"	-	24'-8"	22'-11"	21'-11"	-
	NI-80	25'-7"	23'-9"	22'-7"	-	26'-2"	24'-4"	23'-3"	-
	NI-90	26'-1"	24'-2"	23'-0"	-	26'-8"	24'-9"	23'-7"	-
16"	NI-60	26'-5"	24'-6"	23'-5"	-	27'-2"	25'-3"	24'-2"	-
	NI-80	28'-2"	26'-1"	24'-10"	-	28'-10"	26'-9"	25'-6"	-
	NI-90	28'-8"	26'-6"	25'-3"	-	29'-3"	27'-2"	25'-11"	-

Notes:

1. The tabulated clear spans are based on CSA O86-14 and NBC 2015, and are applicable to residential floor construction meeting the above design criteria.
2. For multiple-span applications, the end spans shall be 40% or more of the adjacent span.
3. Minimum bearing length shall be 1-3/4 inch for end bearings, and 3-1/2 inches for intermediate bearings.
4. Bearing stiffeners are not required when I-joists are used in accordance with this table, except as required for hangers.
5. Nordic I-joists are listed in CCMC Evaluation Report 13032-R and APA Product Report PR-L274C.

Maximum Floor Spans – S4.1

Design Criteria

Spans:	Simple span
Loads:	Live load = 40 psf and dead load = 15 psf
Deflection limits:	L/480 under live load and L/240 under total load
Sheathing:	3/4 in. nailed-glued oriented strand board (OSB) sheathing

Maximum Floor Spans

Joist depth	Joist series	Bare On centre spacing				1/2 in. gypsum ceiling On centre spacing			
		12"	16"	19.2"	24"	12"	16"	19.2"	24"
9-1/2"	NI-20	15'-11"	15'-0"	14'-6"	13'-5"	16'-5"	15'-5"	14'-6"	13'-5"
	NI-40x	17'-0"	16'-0"	15'-5"	14'-10"	17'-5"	16'-5"	15'-10"	15'-2"
	NI-60	17'-2"	16'-2"	15'-7"	14'-11"	17'-7"	16'-7"	16'-0"	15'-4"
	NI-80	18'-3"	17'-1"	16'-5"	15'-9"	18'-8"	17'-5"	16'-9"	16'-1"
11-7/8"	NI-20	17'-11"	16'-11"	16'-3"	15'-8"	18'-7"	17'-5"	16'-10"	16'-2"
	NI-40x	19'-4"	17'-11"	17'-3"	16'-7"	19'-11"	18'-6"	17'-9"	17'-0"
	NI-60	19'-7"	18'-2"	17'-6"	16'-9"	20'-2"	18'-9"	17'-11"	17'-2"
	NI-80	21'-1"	19'-6"	18'-6"	17'-7"	21'-7"	20'-0"	19'-0"	18'-0"
	NI-90	21'-6"	19'-10"	18'-11"	17'-11"	22'-0"	20'-4"	19'-5"	18'-4"
14"	NI-40x	21'-5"	19'-11"	18'-11"	18'-0"	22'-1"	20'-7"	19'-7"	18'-7"
	NI-60	21'-10"	20'-2"	19'-3"	18'-3"	22'-6"	20'-10"	19'-11"	18'-10"
	NI-80	23'-5"	21'-7"	20'-7"	19'-5"	24'-0"	22'-3"	21'-2"	20'-0"
	NI-90	23'-10"	22'-1"	21'-0"	19'-10"	24'-5"	22'-7"	21'-6"	20'-4"
16"	NI-60	23'-9"	22'-0"	21'-0"	19'-10"	24'-6"	22'-9"	21'-8"	20'-7"
	NI-80	25'-6"	23'-7"	22'-5"	21'-2"	26'-2"	24'-3"	23'-1"	21'-10"
	NI-90	26'-0"	24'-0"	22'-10"	21'-6"	26'-7"	24'-8"	23'-5"	22'-2"

Joist depth	Joist series	Mid-span blocking with 1x4 inch strap On centre spacing				Mid-span blocking and 1/2 in. gypsum ceiling On centre spacing			
		12"	16"	19.2"	24"	12"	16"	19.2"	24"
9-1/2"	NI-20	16'-10"	15'-5"	14'-6"	13'-5"	16'-10"	15'-5"	14'-6"	13'-5"
	NI-40x	18'-8"	17'-2"	16'-3"	15'-2"	18'-10"	17'-2"	16'-3"	15'-2"
	NI-60	18'-11"	17'-6"	16'-6"	15'-5"	19'-2"	17'-6"	16'-6"	15'-5"
	NI-80	20'-3"	18'-10"	17'-11"	16'-10"	20'-8"	19'-3"	18'-2"	16'-10"
11-7/8"	NI-20	20'-1"	18'-5"	17'-5"	16'-2"	20'-1"	18'-5"	17'-5"	16'-2"
	NI-40x	21'-10"	20'-4"	19'-4"	17'-8"	22'-5"	20'-6"	19'-4"	17'-8"
	NI-60	22'-1"	20'-7"	19'-8"	18'-4"	22'-8"	20'-10"	19'-8"	18'-4"
	NI-80	23'-8"	22'-0"	20'-11"	19'-10"	24'-1"	22'-6"	21'-6"	20'-0"
	NI-90	24'-1"	22'-5"	21'-4"	20'-2"	24'-7"	22'-11"	21'-10"	20'-7"
14"	NI-40x	24'-5"	22'-9"	21'-9"	19'-5"	25'-1"	23'-2"	21'-9"	19'-5"
	NI-60	24'-10"	23'-2"	22'-1"	20'-10"	25'-6"	23'-8"	22'-4"	20'-10"
	NI-80	26'-6"	24'-8"	23'-6"	22'-2"	27'-1"	25'-3"	24'-1"	22'-9"
	NI-90	27'-0"	25'-1"	23'-11"	22'-7"	27'-6"	25'-8"	24'-6"	23'-2"
16"	NI-60	27'-3"	25'-5"	24'-3"	22'-11"	28'-0"	26'-2"	24'-9"	23'-1"
	NI-80	29'-1"	27'-1"	25'-9"	24'-4"	29'-8"	27'-9"	26'-5"	25'-0"
	NI-90	29'-7"	27'-6"	26'-2"	24'-9"	30'-2"	28'-2"	26'-10"	25'-5"

Notes:

1. The tabulated clear spans are based on CSA O86-14 and NBC 2015, and are applicable to residential floor construction meeting the above design criteria.
2. For multiple-span applications, the end spans shall be 40% or more of the adjacent span.
3. Minimum bearing length shall be 1-3/4 inch for end bearings, and 3-1/2 inches for intermediate bearings.
4. Bearing stiffeners are not required when I-joists are used in accordance with this table, except as required for hangers.
5. Nordic I-joists are listed in CCMC Evaluation Report 13032-R and APA Product Report PR-L274C.

Maximum Floor Spans – S6.1

Design Criteria

Spans:	Simple span
Loads:	Live load = 40 psf and dead load = 15 psf
Deflection limits:	L/480 under live load and L/240 under total load
Sheathing:	5/8 in. nailed-glued Canadian softwood plywood

Maximum Floor Spans

Joist depth	Joist series	Bare On centre spacing				1/2 in. gypsum ceiling On centre spacing			
		12"	16"	19.2"	24"	12"	16"	19.2"	24"
9-1/2"	NI-20	14'-11"	14'-1"	13'-7"	-	15'-4"	14'-6"	14'-1"	-
	NI-40x	15'-11"	15'-0"	14'-6"	-	16'-4"	15'-5"	14'-11"	-
	NI-60	16'-1"	15'-2"	14'-8"	-	16'-6"	15'-7"	15'-1"	-
	NI-80	17'-1"	16'-1"	15'-6"	-	17'-5"	16'-5"	15'-10"	-
11-7/8"	NI-20	16'-9"	15'-10"	15'-4"	-	17'-4"	16'-4"	15'-10"	-
	NI-40x	17'-10"	16'-10"	16'-3"	-	18'-6"	17'-4"	16'-9"	-
	NI-60	18'-1"	17'-0"	16'-5"	-	18'-9"	17'-6"	16'-11"	-
	NI-80	19'-6"	18'-0"	17'-4"	-	20'-1"	18'-7"	17'-9"	-
	NI-90	19'-11"	18'-4"	17'-8"	-	20'-5"	18'-11"	18'-1"	-
14"	NI-40x	19'-10"	18'-4"	17'-8"	-	20'-6"	19'-1"	18'-3"	-
	NI-60	20'-2"	18'-8"	17'-11"	-	20'-10"	19'-4"	18'-6"	-
	NI-80	21'-8"	20'-0"	19'-1"	-	22'-4"	20'-8"	19'-9"	-
	NI-90	22'-1"	20'-5"	19'-6"	-	22'-9"	21'-0"	20'-1"	-
16"	NI-60	22'-0"	20'-4"	19'-6"	-	22'-9"	21'-1"	20'-2"	-
	NI-80	23'-7"	21'-10"	20'-10"	-	24'-4"	22'-6"	21'-6"	-
	NI-90	24'-1"	22'-2"	21'-2"	-	24'-9"	22'-11"	21'-10"	-

Joist depth	Joist series	Mid-span blocking with 1x4 inch strap On centre spacing				Mid-span blocking and 1/2 in. gypsum ceiling On centre spacing			
		12"	16"	19.2"	24"	12"	16"	19.2"	24"
9-1/2"	NI-20	16'-6"	15'-1"	14'-3"	-	16'-6"	15'-1"	14'-3"	-
	NI-40x	17'-9"	16'-10"	15'-11"	-	18'-2"	16'-11"	15'-11"	-
	NI-60	17'-11"	16'-11"	16'-2"	-	18'-5"	17'-2"	16'-2"	-
	NI-80	19'-3"	17'-10"	17'-3"	-	19'-8"	18'-3"	17'-7"	-
11-7/8"	NI-20	19'-4"	18'-0"	17'-1"	-	19'-9"	18'-1"	17'-1"	-
	NI-40x	20'-10"	19'-4"	18'-6"	-	21'-5"	19'-11"	19'-0"	-
	NI-60	21'-1"	19'-7"	18'-8"	-	21'-8"	20'-2"	19'-3"	-
	NI-80	22'-6"	20'-10"	19'-11"	-	23'-1"	21'-5"	20'-5"	-
	NI-90	23'-0"	21'-3"	20'-4"	-	23'-6"	21'-10"	20'-10"	-
14"	NI-40x	23'-5"	21'-8"	20'-9"	-	24'-0"	22'-5"	21'-5"	-
	NI-60	23'-9"	22'-0"	21'-0"	-	24'-5"	22'-8"	21'-8"	-
	NI-80	25'-4"	23'-6"	22'-5"	-	25'-11"	24'-1"	23'-0"	-
	NI-90	25'-10"	23'-11"	22'-9"	-	26'-5"	24'-6"	23'-4"	-
16"	NI-60	26'-2"	24'-3"	23'-2"	-	26'-11"	25'-0"	23'-11"	-
	NI-80	27'-11"	25'-10"	24'-7"	-	28'-7"	26'-6"	25'-3"	-
	NI-90	28'-5"	26'-3"	25'-0"	-	29'-0"	26'-11"	25'-8"	-

Notes:

1. The tabulated clear spans are based on CSA O86-14 and NBC 2015, and are applicable to residential floor construction meeting the above design criteria.
2. For multiple-span applications, the end spans shall be 40% or more of the adjacent span.
3. Minimum bearing length shall be 1-3/4 inch for end bearings, and 3-1/2 inches for intermediate bearings.
4. Bearing stiffeners are not required when I-joists are used in accordance with this table, except as required for hangers.
5. Nordic I-joists are listed in CCMC Evaluation Report 13032-R and APA Product Report PR-L274C.

Maximum Floor Spans – S7.1

Design Criteria

Spans:	Simple span
Loads:	Live load = 40 psf and dead load = 15 psf
Deflection limits:	L/480 under live load and L/240 under total load
Sheathing:	3/4 in. nailed-glued Canadian softwood plywood

Maximum Floor Spans

Joist depth	Joist series	Bare On centre spacing				1/2 in. gypsum ceiling On centre spacing			
		12"	16"	19.2"	24"	12"	16"	19.2"	24"
9-1/2"	NI-20	15'-10"	15'-0"	14'-5"	13'-5"	16'-4"	15'-5"	14'-6"	13'-5"
	NI-40x	16'-11"	15'-11"	15'-4"	14'-9"	17'-4"	16'-4"	15'-9"	15'-1"
	NI-60	17'-1"	16'-1"	15'-6"	14'-10"	17'-6"	16'-6"	15'-11"	15'-3"
	NI-80	18'-1"	17'-0"	16'-4"	15'-8"	18'-7"	17'-4"	16'-8"	16'-0"
11-7/8"	NI-20	17'-10"	16'-10"	16'-2"	15'-7"	18'-5"	17'-4"	16'-9"	16'-1"
	NI-40x	19'-3"	17'-10"	17'-2"	16'-6"	19'-10"	18'-5"	17'-8"	16'-11"
	NI-60	19'-6"	18'-1"	17'-4"	16'-8"	20'-1"	18'-8"	17'-10"	17'-1"
	NI-80	20'-11"	19'-4"	18'-5"	17'-7"	21'-5"	19'-10"	18'-11"	17'-11"
	NI-90	21'-4"	19'-9"	18'-9"	17'-10"	21'-10"	20'-3"	19'-3"	18'-3"
14"	NI-40x	21'-4"	19'-9"	18'-10"	17'-11"	22'-0"	20'-5"	19'-6"	18'-6"
	NI-60	21'-8"	20'-1"	19'-2"	18'-2"	22'-4"	20'-9"	19'-9"	18'-9"
	NI-80	23'-3"	21'-6"	20'-5"	19'-4"	23'-10"	22'-1"	21'-0"	19'-11"
	NI-90	23'-9"	21'-11"	20'-10"	19'-8"	24'-3"	22'-6"	21'-5"	20'-3"
16"	NI-60	23'-7"	21'-10"	20'-10"	19'-9"	24'-4"	22'-7"	21'-7"	20'-5"
	NI-80	25'-4"	23'-5"	22'-3"	21'-1"	26'-0"	24'-1"	22'-11"	21'-8"
	NI-90	25'-10"	23'-10"	22'-8"	21'-5"	26'-5"	24'-6"	23'-4"	22'-0"

Joist depth	Joist series	Mid-span blocking with 1x4 inch strap On centre spacing				Mid-span blocking and 1/2 in. gypsum ceiling On centre spacing			
		12"	16"	19.2"	24"	12"	16"	19.2"	24"
9-1/2"	NI-20	16'-10"	15'-5"	14'-6"	13'-5"	16'-10"	15'-5"	14'-6"	13'-5"
	NI-40x	18'-7"	17'-2"	16'-3"	15'-2"	18'-10"	17'-2"	16'-3"	15'-2"
	NI-60	18'-10"	17'-6"	16'-6"	15'-5"	19'-1"	17'-6"	16'-6"	15'-5"
	NI-80	20'-2"	18'-9"	17'-11"	16'-10"	20'-7"	19'-2"	18'-2"	16'-10"
11-7/8"	NI-20	20'-1"	18'-5"	17'-5"	16'-2"	20'-1"	18'-5"	17'-5"	16'-2"
	NI-40x	21'-9"	20'-3"	19'-4"	17'-8"	22'-4"	20'-5"	19'-4"	17'-8"
	NI-60	22'-0"	20'-6"	19'-7"	18'-4"	22'-7"	20'-10"	19'-8"	18'-4"
	NI-80	23'-6"	21'-10"	20'-10"	19'-9"	24'-0"	22'-5"	21'-4"	20'-0"
	NI-90	24'-0"	22'-4"	21'-3"	20'-1"	24'-6"	22'-10"	21'-9"	20'-7"
14"	NI-40x	24'-4"	22'-8"	21'-8"	19'-5"	25'-0"	23'-2"	21'-9"	19'-5"
	NI-60	24'-9"	23'-0"	22'-0"	20'-9"	25'-5"	23'-8"	22'-4"	20'-10"
	NI-80	26'-5"	24'-6"	23'-4"	22'-1"	27'-0"	25'-2"	24'-0"	22'-8"
	NI-90	26'-11"	25'-0"	23'-10"	22'-6"	27'-5"	25'-7"	24'-5"	23'-1"
16"	NI-60	27'-2"	25'-4"	24'-2"	22'-10"	27'-11"	26'-1"	24'-9"	23'-1"
	NI-80	29'-0"	26'-11"	25'-8"	24'-3"	29'-7"	27'-7"	26'-4"	24'-11"
	NI-90	29'-6"	27'-5"	26'-1"	24'-8"	30'-1"	28'-1"	26'-9"	25'-4"

Notes:

1. The tabulated clear spans are based on CSA O86-14 and NBC 2015, and are applicable to residential floor construction meeting the above design criteria.
2. For multiple-span applications, the end spans shall be 40% or more of the adjacent span.
3. Minimum bearing length shall be 1-3/4 inch for end bearings, and 3-1/2 inches for intermediate bearings.
4. Bearing stiffeners are not required when I-joists are used in accordance with this table, except as required for hangers.
5. Nordic I-joists are listed in CCMC Evaluation Report 13032-R and APA Product Report PR-L274C.

Maximum Floor Spans – M2.1

Design Criteria

Spans:	Simple span
Loads:	Live load = 40 psf and dead load = 20 psf
Deflection limits:	L/480 under live load and L/240 under total load
Sheathing:	5/8 in. nailed-glued oriented strand board (OSB) sheathing

Maximum Floor Spans

Joist depth	Joist series	Bare On centre spacing				1/2 in. gypsum ceiling On centre spacing			
		12"	16"	19.2"	24"	12"	16"	19.2"	24"
9-1/2"	NI-20	15'-1"	14'-3"	13'-10"	-	15'-7"	14'-9"	14'-3"	-
	NI-40x	16'-2"	15'-3"	14'-8"	-	16'-7"	15'-8"	15'-1"	-
	NI-60	16'-4"	15'-4"	14'-10"	-	16'-9"	15'-9"	15'-3"	-
	NI-80	17'-3"	16'-3"	15'-8"	-	17'-8"	16'-7"	16'-0"	-
11-7/8"	NI-20	17'-0"	16'-0"	15'-6"	-	17'-6"	16'-7"	16'-0"	-
	NI-40x	18'-2"	17'-1"	16'-6"	-	18'-9"	17'-6"	16'-11"	-
	NI-60	18'-5"	17'-3"	16'-8"	-	19'-0"	17'-8"	17'-1"	-
	NI-80	19'-9"	18'-3"	17'-7"	-	20'-4"	18'-10"	18'-0"	-
	NI-90	20'-2"	18'-8"	17'-10"	-	20'-9"	19'-2"	18'-4"	-
14"	NI-40x	20'-1"	18'-8"	17'-10"	-	20'-10"	19'-4"	18'-6"	-
	NI-60	20'-6"	18'-11"	18'-2"	-	21'-2"	19'-8"	18'-9"	-
	NI-80	21'-11"	20'-3"	19'-4"	-	22'-7"	20'-11"	20'-0"	-
	NI-90	22'-5"	20'-8"	19'-9"	-	23'-0"	21'-4"	20'-4"	-
16"	NI-60	22'-4"	20'-8"	19'-9"	-	23'-1"	21'-5"	20'-6"	-
	NI-80	23'-11"	22'-1"	21'-1"	-	24'-8"	22'-10"	21'-9"	-
	NI-90	24'-5"	22'-6"	21'-6"	-	25'-1"	23'-2"	22'-2"	-

Joist depth	Joist series	Mid-span blocking with 1x4 inch strap On centre spacing				Mid-span blocking and 1/2 in. gypsum ceiling On centre spacing			
		12"	16"	19.2"	24"	12"	16"	19.2"	24"
9-1/2"	NI-20	16'-8"	15'-3"	14'-5"	-	16'-8"	15'-3"	14'-5"	-
	NI-40x	17'-11"	17'-0"	16'-1"	-	18'-5"	17'-1"	16'-1"	-
	NI-60	18'-2"	17'-1"	16'-4"	-	18'-8"	17'-4"	16'-4"	-
	NI-80	19'-5"	18'-0"	17'-5"	-	19'-10"	18'-5"	17'-8"	-
11-7/8"	NI-20	19'-7"	18'-2"	17'-3"	-	19'-11"	18'-3"	17'-3"	-
	NI-40x	21'-1"	19'-7"	18'-8"	-	21'-8"	20'-2"	19'-0"	-
	NI-60	21'-4"	19'-9"	18'-11"	-	21'-11"	20'-5"	19'-6"	-
	NI-80	22'-9"	21'-1"	20'-2"	-	23'-3"	21'-8"	20'-8"	-
	NI-90	23'-3"	21'-6"	20'-6"	-	23'-9"	22'-0"	21'-0"	-
14"	NI-40x	23'-8"	21'-11"	20'-11"	-	24'-4"	22'-8"	20'-11"	-
	NI-60	24'-0"	22'-3"	21'-3"	-	24'-8"	22'-11"	21'-11"	-
	NI-80	25'-7"	23'-9"	22'-7"	-	26'-2"	24'-4"	23'-3"	-
	NI-90	26'-1"	24'-2"	23'-0"	-	26'-8"	24'-9"	23'-7"	-
16"	NI-60	26'-5"	24'-6"	23'-5"	-	27'-2"	25'-3"	24'-2"	-
	NI-80	28'-2"	26'-1"	24'-10"	-	28'-10"	26'-9"	25'-6"	-
	NI-90	28'-8"	26'-6"	25'-3"	-	29'-3"	27'-2"	25'-11"	-

Notes:

1. The tabulated clear spans are based on CSA O86-14 and NBC 2015, and are applicable to residential floor construction meeting the above design criteria.
2. For multiple-span applications, the end spans shall be 40% or more of the adjacent span.
3. Minimum bearing length shall be 1-3/4 inch for end bearings, and 3-1/2 inches for intermediate bearings.
4. Bearing stiffeners are not required when I-joists are used in accordance with this table, except as required for hangers.
5. Nordic I-joists are listed in CCMC Evaluation Report 13032-R and APA Product Report PR-L274C.

Maximum Floor Spans – M4.1

Design Criteria

Spans:	Simple span
Loads:	Live load = 40 psf and dead load = 20 psf
Deflection limits:	L/480 under live load and L/240 under total load
Sheathing:	3/4 in. nailed-glued oriented strand board (OSB) sheathing

Maximum Floor Spans

Joist depth	Joist series	Bare On centre spacing				1/2 in. gypsum ceiling On centre spacing			
		12"	16"	19.2"	24"	12"	16"	19.2"	24"
9-1/2"	NI-20	15'-11"	15'-0"	14'-6"	13'-5"	16'-5"	15'-5"	14'-6"	13'-5"
	NI-40x	17'-0"	16'-0"	15'-5"	14'-10"	17'-5"	16'-5"	15'-10"	14'-11"
	NI-60	17'-2"	16'-2"	15'-7"	14'-11"	17'-7"	16'-7"	16'-0"	15'-4"
	NI-80	18'-3"	17'-1"	16'-5"	15'-9"	18'-8"	17'-5"	16'-9"	16'-1"
11-7/8"	NI-20	17'-11"	16'-11"	16'-3"	15'-8"	18'-7"	17'-5"	16'-10"	16'-1"
	NI-40x	19'-4"	17'-11"	17'-3"	16'-7"	19'-11"	18'-6"	17'-9"	17'-0"
	NI-60	19'-7"	18'-2"	17'-6"	16'-9"	20'-2"	18'-9"	17'-11"	17'-2"
	NI-80	21'-1"	19'-6"	18'-6"	17'-7"	21'-7"	20'-0"	19'-0"	18'-0"
	NI-90	21'-6"	19'-10"	18'-11"	17'-11"	22'-0"	20'-4"	19'-5"	18'-4"
14"	NI-40x	21'-5"	19'-11"	18'-11"	18'-0"	22'-1"	20'-7"	19'-7"	18'-7"
	NI-60	21'-10"	20'-2"	19'-3"	18'-3"	22'-6"	20'-10"	19'-11"	18'-10"
	NI-80	23'-5"	21'-7"	20'-7"	19'-5"	24'-0"	22'-3"	21'-2"	20'-0"
	NI-90	23'-10"	22'-1"	21'-0"	19'-10"	24'-5"	22'-7"	21'-6"	20'-4"
16"	NI-60	23'-9"	22'-0"	21'-0"	19'-10"	24'-6"	22'-9"	21'-8"	20'-7"
	NI-80	25'-6"	23'-7"	22'-5"	21'-2"	26'-2"	24'-3"	23'-1"	21'-10"
	NI-90	26'-0"	24'-0"	22'-10"	21'-6"	26'-7"	24'-8"	23'-5"	22'-2"

Joist depth	Joist series	Mid-span blocking with 1x4 inch strap On centre spacing				Mid-span blocking and 1/2 in. gypsum ceiling On centre spacing			
		12"	16"	19.2"	24"	12"	16"	19.2"	24"
9-1/2"	NI-20	16'-10"	15'-5"	14'-6"	13'-5"	16'-10"	15'-5"	14'-6"	13'-5"
	NI-40x	18'-8"	17'-2"	16'-3"	14'-11"	18'-10"	17'-2"	16'-3"	14'-11"
	NI-60	18'-11"	17'-6"	16'-6"	15'-5"	19'-2"	17'-6"	16'-6"	15'-5"
	NI-80	20'-3"	18'-10"	17'-11"	16'-10"	20'-8"	19'-3"	18'-2"	16'-10"
11-7/8"	NI-20	20'-1"	18'-5"	17'-5"	16'-1"	20'-1"	18'-5"	17'-5"	16'-1"
	NI-40x	21'-10"	20'-4"	19'-0"	17'-0"	22'-5"	20'-6"	19'-0"	17'-0"
	NI-60	22'-1"	20'-7"	19'-8"	18'-4"	22'-8"	20'-10"	19'-8"	18'-4"
	NI-80	23'-8"	22'-0"	20'-11"	19'-10"	24'-1"	22'-6"	21'-6"	20'-0"
	NI-90	24'-1"	22'-5"	21'-4"	20'-2"	24'-7"	22'-11"	21'-10"	20'-7"
14"	NI-40x	24'-5"	22'-9"	20'-11"	18'-8"	25'-1"	22'-11"	20'-11"	18'-8"
	NI-60	24'-10"	23'-2"	22'-1"	20'-10"	25'-6"	23'-8"	22'-4"	20'-10"
	NI-80	26'-6"	24'-8"	23'-6"	22'-2"	27'-1"	25'-3"	24'-1"	22'-9"
	NI-90	27'-0"	25'-1"	23'-11"	22'-7"	27'-6"	25'-8"	24'-6"	23'-2"
16"	NI-60	27'-3"	25'-5"	24'-3"	22'-11"	28'-0"	26'-2"	24'-9"	23'-1"
	NI-80	29'-1"	27'-1"	25'-9"	24'-4"	29'-8"	27'-9"	26'-5"	25'-0"
	NI-90	29'-7"	27'-6"	26'-2"	24'-9"	30'-2"	28'-2"	26'-10"	25'-5"

Notes:

1. The tabulated clear spans are based on CSA O86-14 and NBC 2015, and are applicable to residential floor construction meeting the above design criteria.
2. For multiple-span applications, the end spans shall be 40% or more of the adjacent span.
3. Minimum bearing length shall be 1-3/4 inch for end bearings, and 3-1/2 inches for intermediate bearings.
4. Bearing stiffeners are not required when I-joists are used in accordance with this table, except as required for hangers.
5. Nordic I-joists are listed in CCMC Evaluation Report 13032-R and APA Product Report PR-L274C.

Maximum Floor Spans – M6.1

Design Criteria

Spans:	Simple span
Loads:	Live load = 40 psf and dead load = 20 psf
Deflection limits:	L/480 under live load and L/240 under total load
Sheathing:	5/8 in. nailed-glued Canadian softwood plywood

Maximum Floor Spans

Joist depth	Joist series	Bare On centre spacing				1/2 in. gypsum ceiling On centre spacing			
		12"	16"	19.2"	24"	12"	16"	19.2"	24"
9-1/2"	NI-20	14'-11"	14'-1"	13'-7"	-	15'-4"	14'-6"	14'-1"	-
	NI-40x	15'-11"	15'-0"	14'-6"	-	16'-4"	15'-5"	14'-11"	-
	NI-60	16'-1"	15'-2"	14'-8"	-	16'-6"	15'-7"	15'-1"	-
	NI-80	17'-1"	16'-1"	15'-6"	-	17'-5"	16'-5"	15'-10"	-
11-7/8"	NI-20	16'-9"	15'-10"	15'-4"	-	17'-4"	16'-4"	15'-10"	-
	NI-40x	17'-10"	16'-10"	16'-3"	-	18'-6"	17'-4"	16'-9"	-
	NI-60	18'-1"	17'-0"	16'-5"	-	18'-9"	17'-6"	16'-11"	-
	NI-80	19'-6"	18'-0"	17'-4"	-	20'-1"	18'-7"	17'-9"	-
	NI-90	19'-11"	18'-4"	17'-8"	-	20'-5"	18'-11"	18'-1"	-
14"	NI-40x	19'-10"	18'-4"	17'-8"	-	20'-6"	19'-1"	18'-3"	-
	NI-60	20'-2"	18'-8"	17'-11"	-	20'-10"	19'-4"	18'-6"	-
	NI-80	21'-8"	20'-0"	19'-1"	-	22'-4"	20'-8"	19'-9"	-
	NI-90	22'-1"	20'-5"	19'-6"	-	22'-9"	21'-0"	20'-1"	-
16"	NI-60	22'-0"	20'-4"	19'-6"	-	22'-9"	21'-1"	20'-2"	-
	NI-80	23'-7"	21'-10"	20'-10"	-	24'-4"	22'-6"	21'-6"	-
	NI-90	24'-1"	22'-2"	21'-2"	-	24'-9"	22'-11"	21'-10"	-

Joist depth	Joist series	Mid-span blocking with 1x4 inch strap On centre spacing				Mid-span blocking and 1/2 in. gypsum ceiling On centre spacing			
		12"	16"	19.2"	24"	12"	16"	19.2"	24"
9-1/2"	NI-20	16'-6"	15'-1"	14'-3"	-	16'-6"	15'-1"	14'-3"	-
	NI-40x	17'-9"	16'-10"	15'-11"	-	18'-2"	16'-11"	15'-11"	-
	NI-60	17'-11"	16'-11"	16'-2"	-	18'-5"	17'-2"	16'-2"	-
	NI-80	19'-3"	17'-10"	17'-3"	-	19'-8"	18'-3"	17'-7"	-
11-7/8"	NI-20	19'-4"	18'-0"	17'-1"	-	19'-9"	18'-1"	17'-1"	-
	NI-40x	20'-10"	19'-4"	18'-6"	-	21'-5"	19'-11"	19'-0"	-
	NI-60	21'-1"	19'-7"	18'-8"	-	21'-8"	20'-2"	19'-3"	-
	NI-80	22'-6"	20'-10"	19'-11"	-	23'-1"	21'-5"	20'-5"	-
	NI-90	23'-0"	21'-3"	20'-4"	-	23'-6"	21'-10"	20'-10"	-
14"	NI-40x	23'-5"	21'-8"	20'-9"	-	24'-0"	22'-5"	20'-11"	-
	NI-60	23'-9"	22'-0"	21'-0"	-	24'-5"	22'-8"	21'-8"	-
	NI-80	25'-4"	23'-6"	22'-5"	-	25'-11"	24'-1"	23'-0"	-
	NI-90	25'-10"	23'-11"	22'-9"	-	26'-5"	24'-6"	23'-4"	-
16"	NI-60	26'-2"	24'-3"	23'-2"	-	26'-11"	25'-0"	23'-11"	-
	NI-80	27'-11"	25'-10"	24'-7"	-	28'-7"	26'-6"	25'-3"	-
	NI-90	28'-5"	26'-3"	25'-0"	-	29'-0"	26'-11"	25'-8"	-

Notes:

1. The tabulated clear spans are based on CSA O86-14 and NBC 2015, and are applicable to residential floor construction meeting the above design criteria.
2. For multiple-span applications, the end spans shall be 40% or more of the adjacent span.
3. Minimum bearing length shall be 1-3/4 inch for end bearings, and 3-1/2 inches for intermediate bearings.
4. Bearing stiffeners are not required when I-joists are used in accordance with this table, except as required for hangers.
5. Nordic I-joists are listed in CCMC Evaluation Report 13032-R and APA Product Report PR-L274C.

Maximum Floor Spans – M7.1

Design Criteria

Spans:	Simple span
Loads:	Live load = 40 psf and dead load = 20 psf
Deflection limits:	L/480 under live load and L/240 under total load
Sheathing:	3/4 in. nailed-glued Canadian softwood plywood

Maximum Floor Spans

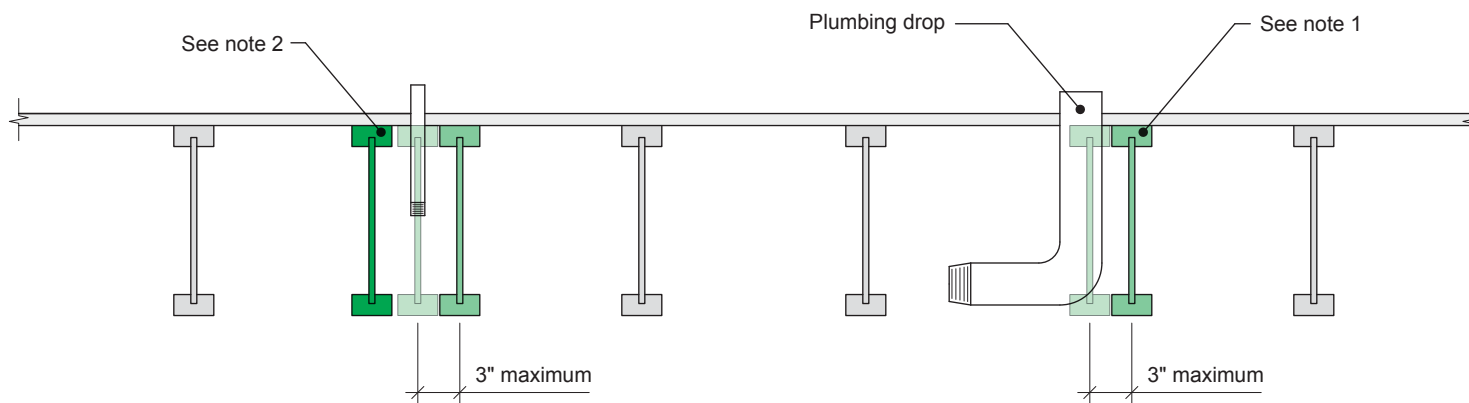
Joist depth	Joist series	Bare On centre spacing				1/2 in. gypsum ceiling On centre spacing			
		12"	16"	19.2"	24"	12"	16"	19.2"	24"
9-1/2"	NI-20	15'-10"	15'-0"	14'-5"	13'-5"	16'-4"	15'-5"	14'-6"	13'-5"
	NI-40x	16'-11"	15'-11"	15'-4"	14'-9"	17'-4"	16'-4"	15'-9"	14'-11"
	NI-60	17'-1"	16'-1"	15'-6"	14'-10"	17'-6"	16'-6"	15'-11"	15'-3"
	NI-80	18'-1"	17'-0"	16'-4"	15'-8"	18'-7"	17'-4"	16'-8"	16'-0"
11-7/8"	NI-20	17'-10"	16'-10"	16'-2"	15'-7"	18'-5"	17'-4"	16'-9"	16'-1"
	NI-40x	19'-3"	17'-10"	17'-2"	16'-6"	19'-10"	18'-5"	17'-8"	16'-11"
	NI-60	19'-6"	18'-1"	17'-4"	16'-8"	20'-1"	18'-8"	17'-10"	17'-1"
	NI-80	20'-11"	19'-4"	18'-5"	17'-7"	21'-5"	19'-10"	18'-11"	17'-11"
	NI-90	21'-4"	19'-9"	18'-9"	17'-10"	21'-10"	20'-3"	19'-3"	18'-3"
14"	NI-40x	21'-4"	19'-9"	18'-10"	17'-11"	22'-0"	20'-5"	19'-6"	18'-6"
	NI-60	21'-8"	20'-1"	19'-2"	18'-2"	22'-4"	20'-9"	19'-9"	18'-9"
	NI-80	23'-3"	21'-6"	20'-5"	19'-4"	23'-10"	22'-1"	21'-0"	19'-11"
	NI-90	23'-9"	21'-11"	20'-10"	19'-8"	24'-3"	22'-6"	21'-5"	20'-3"
16"	NI-60	23'-7"	21'-10"	20'-10"	19'-9"	24'-4"	22'-7"	21'-7"	20'-5"
	NI-80	25'-4"	23'-5"	22'-3"	21'-1"	26'-0"	24'-1"	22'-11"	21'-8"
	NI-90	25'-10"	23'-10"	22'-8"	21'-5"	26'-5"	24'-6"	23'-4"	22'-0"

Joist depth	Joist series	Mid-span blocking with 1x4 inch strap On centre spacing				Mid-span blocking and 1/2 in. gypsum ceiling On centre spacing			
		12"	16"	19.2"	24"	12"	16"	19.2"	24"
9-1/2"	NI-20	16'-10"	15'-5"	14'-6"	13'-5"	16'-10"	15'-5"	14'-6"	13'-5"
	NI-40x	18'-7"	17'-2"	16'-3"	14'-11"	18'-10"	17'-2"	16'-3"	14'-11"
	NI-60	18'-10"	17'-6"	16'-6"	15'-5"	19'-1"	17'-6"	16'-6"	15'-5"
	NI-80	20'-2"	18'-9"	17'-11"	16'-10"	20'-7"	19'-2"	18'-2"	16'-10"
11-7/8"	NI-20	20'-1"	18'-5"	17'-5"	16'-1"	20'-1"	18'-5"	17'-5"	16'-1"
	NI-40x	21'-9"	20'-3"	19'-0"	17'-0"	22'-4"	20'-5"	19'-0"	17'-0"
	NI-60	22'-0"	20'-6"	19'-7"	18'-4"	22'-7"	20'-10"	19'-8"	18'-4"
	NI-80	23'-6"	21'-10"	20'-10"	19'-9"	24'-0"	22'-5"	21'-4"	20'-0"
	NI-90	24'-0"	22'-4"	21'-3"	20'-1"	24'-6"	22'-10"	21'-9"	20'-7"
14"	NI-40x	24'-4"	22'-8"	20'-11"	18'-8"	25'-0"	22'-11"	20'-11"	18'-8"
	NI-60	24'-9"	23'-0"	22'-0"	20'-9"	25'-5"	23'-8"	22'-4"	20'-10"
	NI-80	26'-5"	24'-6"	23'-4"	22'-1"	27'-0"	25'-2"	24'-0"	22'-8"
	NI-90	26'-11"	25'-0"	23'-10"	22'-6"	27'-5"	25'-7"	24'-5"	23'-1"
16"	NI-60	27'-2"	25'-4"	24'-2"	22'-10"	27'-11"	26'-1"	24'-9"	23'-1"
	NI-80	29'-0"	26'-11"	25'-8"	24'-3"	29'-7"	27'-7"	26'-4"	24'-11"
	NI-90	29'-6"	27'-5"	26'-1"	24'-8"	30'-1"	28'-1"	26'-9"	25'-4"

Notes:

1. The tabulated clear spans are based on CSA O86-14 and NBC 2015, and are applicable to residential floor construction meeting the above design criteria.
2. For multiple-span applications, the end spans shall be 40% or more of the adjacent span.
3. Minimum bearing length shall be 1-3/4 inch for end bearings, and 3-1/2 inches for intermediate bearings.
4. Bearing stiffeners are not required when I-joists are used in accordance with this table, except as required for hangers.
5. Nordic I-joists are listed in CCMC Evaluation Report 13032-R and APA Product Report PR-L274C.

7c

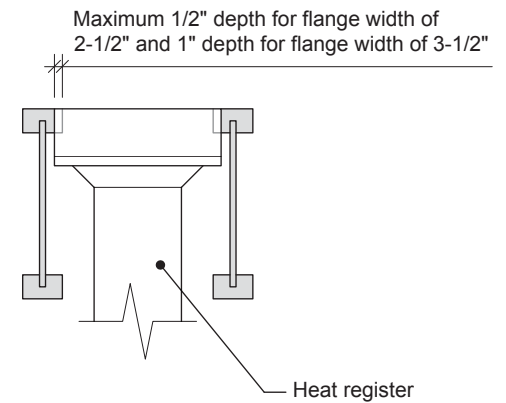
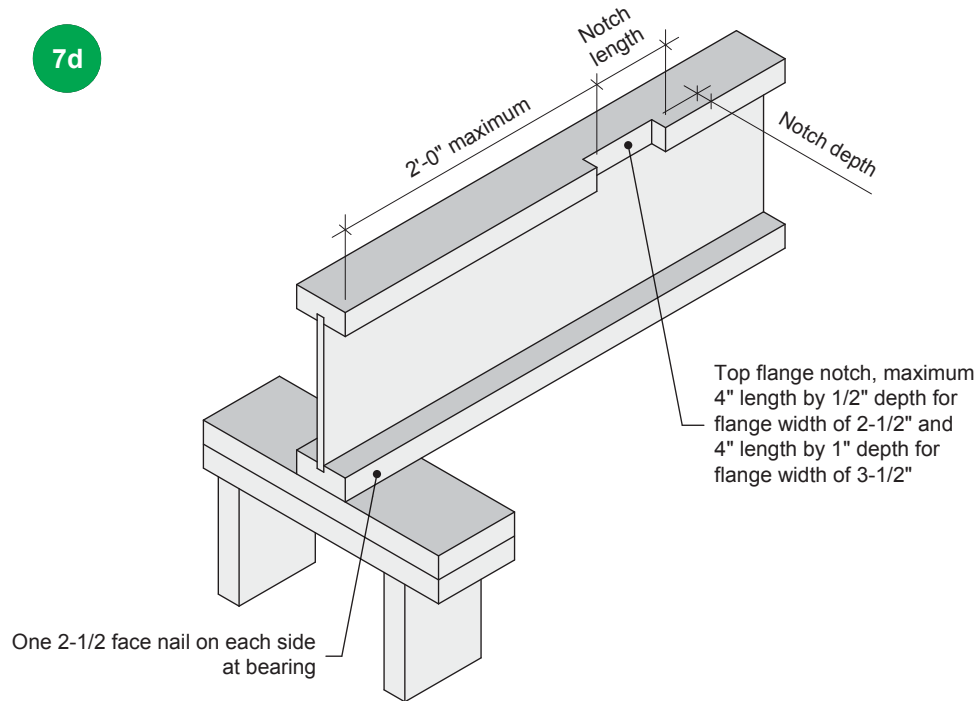


Notes:

1. To prevent interference with plumbing, a joist may be shifted up to 3 inches if the edge of the floor panel is supported and the span rating is not exceeded.
2. In all other cases, an additional joist is required.

All nails shown in the details are assumed to be common nails unless otherwise noted. Nails shall have a diameter not less than 0.128 inch for 2-1/2-inch nails, or 0.144 inch for 3-inch nails. Individual components not shown to scale for clarity.

7d



Notes:

1. Blocking required at bearing for lateral support, not shown for clarity.
2. The maximum dimensions for a notch on the side of the top flange are 4-inch length by 1/2-inch depth for flange width of 2-1/2 inches, and 4-inch length by 1-inch depth for flange width of 3-1/2 inches.
3. This detail applies to simple-span joists and multiple-span joists where the notch is located at the end half-span.
4. For other applications, contact Nordic Structures.

All nails shown in the details are assumed to be common nails unless otherwise noted. Nails shall have a diameter not less than 0.128 inch for 2-1/2-inch nails, or 0.144 inch for 3-inch nails. Individual components not shown to scale for clarity.