

NOT THE GRANTING OF A PERMIT NOR REVIEWING OF SPECS & DRAWINGS NOR INSPECTIONS MADE DURING INSTALLATION BY THE OFFICIAL HAVING JURISDICTION SHALL RELIEVE THE OWNER FROM REQUIREMENTS OF THE ONTARIO BUILDING CODE AND ANY OTHER REFERENCED REQUIREMENTS.

Block 120 Units 19 to 24



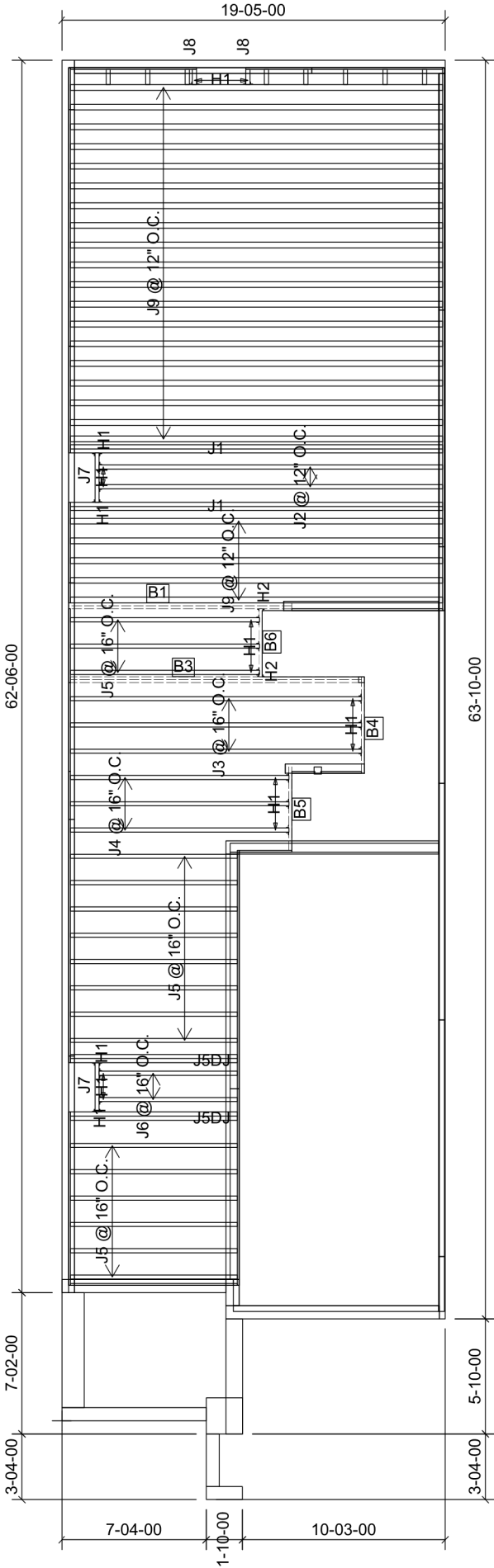
FROM PLAN DATED: 2022/06
BUILDER: GREENPARK HOMES
SITE: BARLASSINA CONSTRUCTION
MODEL: CHERRY 3E
ELEVATION: 1,2
LOT:
CITY: CAMBRIDGE
SALESMAN: RICK DICIANO
DESIGNER: AJ
REVISION:

REFER TO THE **NORDIC INSTALLATION** GUIDE FOR PROPER STORAGE AND INSTALLATION.
SQUASH BLOCKS OF 2x4, 2x6, 2x8 SPF #2 REQ'D UNDER INTERIOR UNIFORM LOAD BEARING WALLS.
MULTIPLE SQUASH BLOCKS REQ'D UNDER CONCENTRATED LOADS. SEE FIGURE 1.
CANTILEVERED JOISTS INCLUDING **CANT' OVER BRICK** REQ. I-JOIST BLOCKING ALONG BEARING AND RIMBOARD CLOSURE AT ENDS. SEE FIGURES 4/5 FOR REINFORCEMENT REQUIREMENTS.
FOR **HOLES** INCLUDING **DUCT CHASE** AND **FIELD CUT OPENINGS** SEE FIGURE 6 AND TABLES 6.1/6.2.
CERAMIC TILE APPLICATION AS PER OBC 9.30.6.

ALL **CONNECTORS** MUST BE INSTALLED AS PER THE **MANUFACTURER'S SPECIFICATIONS** USING THE MANUFACTURER **SPECIFIED FASTENERS**.
ALL **BEAM HANGER FASTENERS** INSTALLED INTO THE **SUPPORTING MEMBER MUST** BE A MINIMUM OF **3.5"** IN LENGTH UNLESS OTHERWISE SPECIFIED BY THE SUPPORTING MEMBER ENGINEER OF RECORD.

LOADING:
LIVE LOAD: 40.0 lb/ft²
DEAD LOAD: 15.0 lb/ft²
TILE LOAD: +5.0 lb/ft²

JOIST LL DEFLECTION LIMIT: L/480
SUBFLOOR: 3/4" GLUED AND NAILED



Products				
PlotID	Length	Product	Plies	Net Qty
J1	20-00-00	11 7/8" NI-40x	2	4
J2	18-00-00	11 7/8" NI-40x	1	2
J3	16-00-00	11 7/8" NI-40x	1	3
J4	12-00-00	11 7/8" NI-40x	1	3
J5	10-00-00	11 7/8" NI-40x	1	17
J5DJ	10-00-00	11 7/8" NI-40x	2	4
J6	8-00-00	11 7/8" NI-40x	1	2
J7	4-00-00	11 7/8" NI-40x	1	2
J8	2-00-00	11 7/8" NI-40x	1	2
J9	20-00-00	11 7/8" NI-80	1	24
B3	16-00-00	1 3/4" x 11 7/8" (2.0E 3100) WestFraser LVL	2	2
B1	12-00-00	1 3/4" x 11 7/8" (2.0E 3100) WestFraser LVL	2	2
B4	6-00-00	1 3/4" x 11 7/8" (2.0E 3100) WestFraser LVL	1	1
B5	6-00-00	1 3/4" x 11 7/8" (2.0E 3100) WestFraser LVL	1	1
B6	4-00-00	1 3/4" x 11 7/8" (2.0E 3100) WestFraser LVL	1	1

Connector Summary			
Qty	Manuf	Product	
9	H1	IUS2.56/11.88	
4	H1	IUS2.56/11.88	
4	H1	IUS2.56/11.88	
2	H1	IUS2.56/11.88	
2	H2	HUS1.81/10	

DWG# TF22081035 TO TF22081039



STRUCTURAL COMPONENTS ONLY
DWG# TF22081043

THIS IS A FLOOR COMPONENT
PLACEMENT PLAN ONLY.

The wood beams and joists outlined on this plan are designed as individual building components to be incorporated into the design of the building at the specification of the building designer. Please see the individual beam reports, joist reports, and/or joist span tables for each component identified on this placement plan.
The supporting structure is to be specified by the building designer prior to the installation of joist(s) and/or beam(s). The building designer is responsible for the bracing of the floor system and its integration into the bracing of the overall structure. All components labelled "by others" or "as per plan", and all steel beams, are not within the scope of work of this seal.
The building designer must review and approve this plan to ascertain conformity to the overall structural plan of the building. All dimensions to be verified on site.

DATE: 2022-08-04

1st FLOOR FRAMING

NOT THE GRANTING OF A PERMIT NOR REVIEWING OF SPECS & DRAWINGS NOR INSPECTIONS MADE DURING INSTALLATION BY THE OFFICIAL HAVING JURISDICTION SHALL RELIEVE THE OWNER FROM REQUIREMENTS OF THE ONTARIO BUILDING CODE AND ANY OTHER REFERENCED REQUIREMENTS.

Block 120 Units 19 to 24



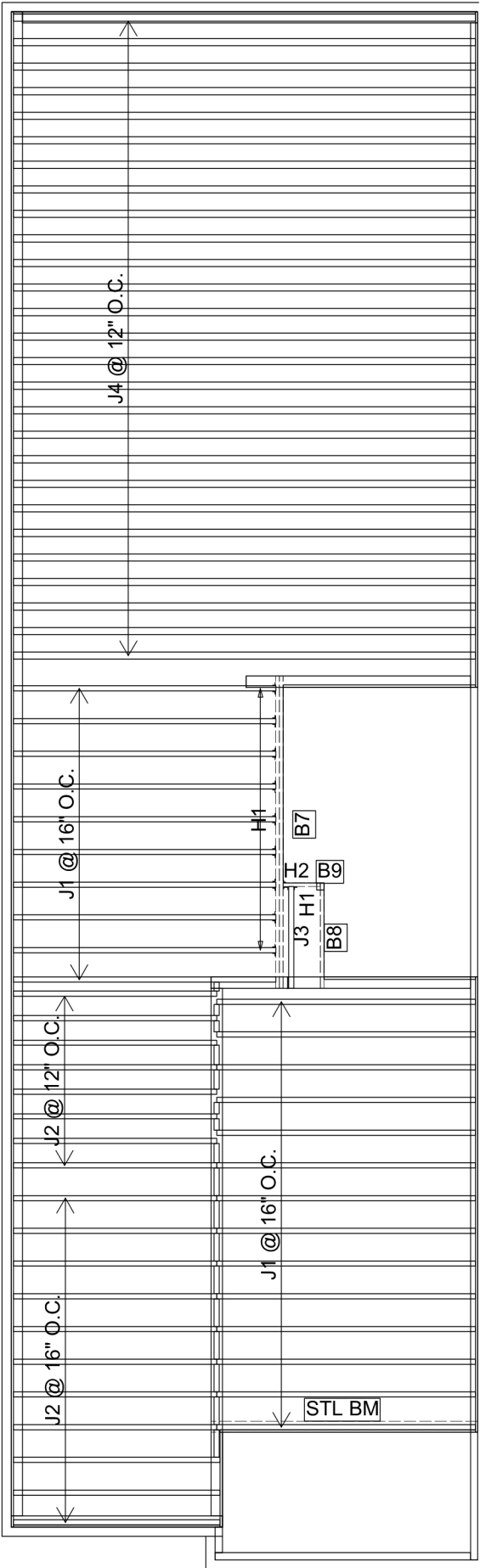
FROM PLAN DATED: 2022/06
BUILDER: GREENPARK HOMES
SITE: BARLASSINA CONSTRUCTION
MODEL: CHERRY 3E
ELEVATION: 1,2
LOT:
CITY: CAMBRIDGE
SALESMAN: RICK DICIANO
DESIGNER: AJ
REVISION:

REFER TO THE **NORDIC INSTALLATION** GUIDE FOR PROPER STORAGE AND INSTALLATION.
SQUASH BLOCKS OF 2x4, 2x6, 2x8 SPF #2 REQ'D UNDER INTERIOR UNIFORM LOAD BEARING WALLS.
MULTIPLE SQUASH BLOCKS REQ'D UNDER CONCENTRATED LOADS. SEE FIGURE 1.
CANTILEVERED JOISTS INCLUDING **CANT' OVER BRICK** REQ. I-JOIST BLOCKING ALONG BEARING AND RIMBOARD CLOSURE AT ENDS. SEE FIGURES 4/5 FOR REINFORCEMENT REQUIREMENTS.
FOR **HOLES** INCLUDING **DUCT CHASE** AND **FIELD CUT OPENINGS** SEE FIGURE 6 AND TABLES 6.1/6.2.
CERAMIC TILE APPLICATION AS PER OBC 9.30.6.

ALL **CONNECTORS** MUST BE INSTALLED AS PER THE **MANUFACTURER'S SPECIFICATIONS** USING THE MANUFACTURER **SPECIFIED FASTENERS**.
ALL **BEAM HANGER FASTENERS** INSTALLED INTO THE **SUPPORTING MEMBER MUST** BE A MINIMUM OF **3.5"** IN LENGTH UNLESS OTHERWISE SPECIFIED BY THE SUPPORTING MEMBER ENGINEER OF RECORD.

LOADING:
LIVE LOAD: 40.0 lb/ft²
DEAD LOAD: 15.0 lb/ft²
TILE LOAD: +5.0 lb/ft²

JOIST LL DEFLECTION LIMIT: L/480
SUBFLOOR: 5/8" GLUED AND NAILED



Products				
PlotID	Length	Product	Plies	Net Qty
J1	12-00-00	11 7/8" NI-40x	1	24
J2	10-00-00	11 7/8" NI-40x	1	19
J3	6-00-00	11 7/8" NI-40x	1	1
J4	20-00-00	11 7/8" NI-80	1	27
B7	14-00-00	1 3/4" x 11 7/8" (2.0E 3100) WestFraser LVL	2	2
B8	6-00-00	1 3/4" x 11 7/8" (2.0E 3100) WestFraser LVL	1	1
B9	2-00-00	1 3/4" x 11 7/8" (2.0E 3100) WestFraser LVL	1	1

Connector Summary		
Qty	Manuf	Product
1	H1	IUS2.56/11.88
9	H1	IUS2.56/11.88
1	H2	HUS1.81/10

DWG# TF22081040 TO TF22081042



STRUCTURAL COMPONENTS ONLY
DWG# TF22081044

THIS IS A FLOOR COMPONENT
PLACEMENT PLAN ONLY.

The wood beams and joists outlined on this plan are designed as individual building components to be incorporated into the design of the building at the specification of the building designer. Please see the individual beam reports, joist reports, and/or joist span tables for each component identified on this placement plan.
The supporting structure is to be specified by the building designer prior to the installation of joist(s) and/or beam(s). The building designer is responsible for the bracing of the floor system and its integration into the bracing of the overall structure. All components labelled "by others" or "as per plan", and all steel beams, are not within the scope of work of this seal.
The building designer must review and approve this plan to ascertain conformity to the overall structural plan of the building. All dimensions to be verified on site.

DATE: 2022-08-03

2nd FLOOR FRAMING



BUILDER: **GREENPARK HOMES**
SITE: **BARLASSINA CONSTRUCTION**
MODEL: **CHERRY 3E**
CITY: **CAMBRIDGE**

Job Name: **CHERRY 3E EL 1,2**
Level: **1ST FLR FRAMING**
Label: **B1 - i574**
Type: **Beam**

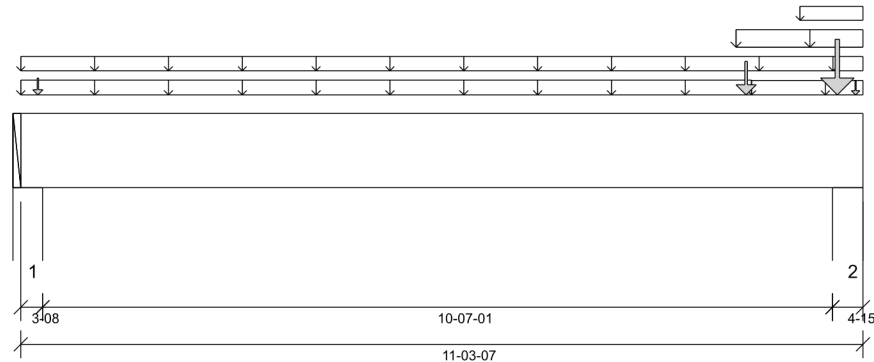
2 Ply Member
1 3/4" x 11 7/8" (2.0E 3100)
WestFraser LVL

Status:
Design Passed

Illustration Not to Scale. Pitch: 0/12

Designed by Single Member Design Engine in MiTek® Structure Version 8.5.3.233.Update5.15

Report Version: 2021.03.26 08/17/2022 09:02



DESIGN INFORMATION

Building Code: NBCC 2015, Part9, BCBC 2018, ABC 2019, OBC 2012 (2019 Amendment)

Design Methodology: LSD

Service Condition: Dry

LL Deflection Limit: L/360,

TL Deflection Limit: L/240,

Lateral Restraint Requirements:

Both ends of the member and the outer supports must be laterally restrained. Top and bottom edges of the member must be fully restrained or have the following maximum unbraced length:

Top: 0' Bottom: 9'- 4 1/4"

Factored Resistance of Support Material:

- 615 psi Wall @ 0'- 2 1/2"
- 615 psi Wall @ 10'- 11 9/16"

PLY TO PLY CONNECTION:
4 ROWS OF 3.25" PNEUMATIC GUN NAILS (0.120"x3.25") @ 12" O/C

PLY TO PLY CONNECTION ASSUMES ANY SUPPORTED BEAM HANGERS ARE FASTENED TO THIS BEAM WITH MIN. 3.5" FASTENERS.



STRUCTURAL COMPONENT ONLY
DWG # TF22081035

ANALYSIS RESULTS

Design Criteria	Location	Load Combination	LDF	Design	Limit	Result
Factored Pos. Moment:	8'- 9 13/16"	1.25D + 1.5L	1.00	2125 lb ft	35345 lb ft	Passed - 6%
Factored Shear:	9'- 10 11/16"	1.25D + 1.5L	1.00	1587 lb	13815 lb	Passed - 11%
Live Load (LL) Pos. Defl.:	6'- 1"	L		0.018"	L/360	Passed - L/999
Total Load (TL) Pos. Defl.:	6'- 3/8"	D + L		0.032"	L/240	Passed - L/999

SUPPORT AND REACTION INFORMATION

ID	Input Bearing Length	Controlling Load Combination	LDF	Factored Downward Reaction	Factored Uplift Reaction	Factored Resistance of Member	Factored Resistance of Support	Result
1	3-08	1.25D + 1.5L	1.00	719 lb		12740 lb	7536 lb	Passed - 10%
2	4-15	1.25D + 1.5L	1.00	5005 lb		17862 lb	10566 lb	Passed - 47%

SPECIFIED LOADS

Type	Start Loc	End Loc	Source	Face	Dead (D)	Live (L)	Snow (S)	Wind (W)
Self Weight	0'	11'- 3 7/16"	Self Weight	Top	12 lb/ft	-	-	-
Uniform	0'	11'- 3 7/16"	FC1 Floor Decking (Plan View Fill)	Top	3 lb/ft	6 lb/ft	-	-
Uniform	0'	9'- 9 1/2"	FC1 Floor Decking (Plan View Fill)	Top	7 lb/ft	14 lb/ft	-	-
Uniform	9'- 7 1/16"	11'- 3 7/16"	6(i130)	Top	81 lb/ft	-	-	-
Uniform	9'- 9 1/2"	11'- 3 7/16"	FC1 Floor Decking (Plan View Fill)	Top	5 lb/ft	9 lb/ft	-	-
Uniform	10'- 5 5/16"	11'- 3 7/16"	6(i130)	Top	1 lb/ft	2 lb/ft	-	-
Point	9'- 8 5/8"	9'- 8 5/8"	B6(i569)	Front	359 lb	698 lb	-	-
Point	0'- 2 3/4"	0'- 2 3/4"	E10(i124)	Top	92 lb	66 lb	-	-
Point	10'- 11 5/16"	10'- 11 5/16"	6(i130)	Top	808 lb	1457 lb	-	-
Point	11'- 2 1/4"	11'- 2 1/4"	6(i130)	Top	3 lb	5 lb	-	-

UNFACTORED REACTIONS

ID	Start Loc	End Loc	Source	Dead (D)	Live (L)	Snow (S)	Wind (W)
1	0'	0'- 3 1/2"	W6(i14)	260 lb	254 lb	-	-
2	10'- 10 9/16"	11'- 3 7/16"	1(i22)	1383 lb	2192 lb	-	-

DESIGN NOTES

- The dead loads used in the design of this member were applied to the structure as sloped dead loads.
- Lateral stability factor (KL) was based on user preference to use the width of all plies. (Consult with manufacturer for guideline pertaining to this design option.)
- Analysis and Design has been performed using precision loading from actual modeled conditions. Some loads may have been modified to simplify reporting.
- Tributary Loads have been generated based on actual spacing between members in the model which may differ from the default system spacing. The actual loads applied to the member are shown in the Specified Loads table.
- Transfer reactions may differ from design results as allowed per building codes and standard load distribution practices.
- This report is based on modeled conditions input by the user. Source information for the loads and supports are provided for reference only. Verify that all loads and support conditions are correct.
- Review all loads and reactions to ensure that the member/bearing/connector/structure can resist adequately. Unless already specified on this report, anchorage for uplift reactions to be specified by others. Installation of member and accessories (if required) as per manufacturer's instruction.
- When the applied loads are coming from a member/post/wall above that does not sit directly on this beam, adequate load transfer elements, such as squash blocks, wall studs, or beveled plates are required to transfer the loads to this beam.
- Bearing capacity of member at support 1, 2 was verified for the effect of concentrated load applied near the support. At support 2. Required Load Area: L=1.500", W=3.500". LDF=1.00, Pf=3196 lb, Qr=5460 lb, Result=58.53%.

PLY TO PLY CONNECTION

- Member design assumed proper ply to ply connection by others. Fastener spacing along length of member must not exceed 4 times depth of member. Verify connection between plies according to code specification and follow the manufacturer's installation instruction. Loads assumed to be distributed equally to each ply.



BUILDER: **GREENPARK HOMES**
SITE: **BARLASSINA CONSTRUCTION**
MODEL: **CHERRY 3E**
CITY: **CAMBRIDGE**

Job Name: **CHERRY 3E EL 1,2**
Level: **1ST FLR FRAMING**
Label: **B3 - i584**
Type: **Beam**

2 Ply Member
1 3/4" x 11 7/8" (2.0E 3100)
WestFraser LVL

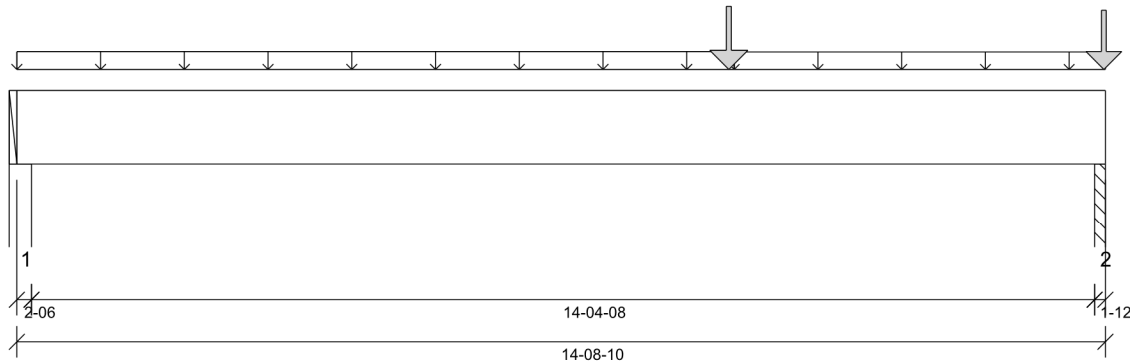
Status:
Design Passed

Illustration Not to Scale. Pitch: 0/12

Designed by Single Member Design Engine in MiTek® Structure Version 8.5.3.233.Update5.15

Report Version: 2021.03.26

08/17/2022 09:02



DESIGN INFORMATION

Building Code: NBCC 2015, Part9, BCBC 2018, ABC 2019, OBC 2012 (2019 Amendment)

Design Methodology: LSD

Service Condition: Dry

LL Deflection Limit: L/360,

TL Deflection Limit: L/240,

Lateral Restraint Requirements:

Both ends of the member and the outer supports must be laterally restrained. Top and bottom edges of the member must be fully restrained or have the following maximum unbraced length:

Top: 0' Bottom: 9'- 4 1/4"

Factored Resistance of Support Material:

- 615 psi Wall @ 0'- 1 3/8"
- 615 psi Column @ 14'- 7 7/8"

ANALYSIS RESULTS

Design Criteria	Location	Load Combination	LDF	Design	Limit	Result
Factored Pos. Moment:	9'- 7 1/2"	1.25D + 1.5L	1.00	6905 lb ft	35345 lb ft	Passed - 20%
Factored Shear:	13'- 7"	1.25D + 1.5L	1.00	1474 lb	13815 lb	Passed - 11%
Live Load (LL) Pos. Defl.:	7'- 9 15/16"	L		0.104"	L/360	Passed - L/999
Total Load (TL) Pos. Defl.:	7'- 9 9/16"	D + L		0.169"	L/240	Passed - L/999

SUPPORT AND REACTION INFORMATION

ID	Input Bearing Length	Controlling Load Combination	LDF	Factored Downward Reaction	Factored Uplift Reaction	Factored Resistance of Member	Factored Resistance of Support	Result
1	2-06	1.25D + 1.5L	1.00	1079 lb		8645 lb	5114 lb	Passed - 21%
2	1-12	1.25D + 1.5L	1.00	3039 lb		6370 lb	3767 lb	Passed - 81%

SPECIFIED LOADS

Type	Start Loc	End Loc	Source	Face	Dead (D)	Live (L)	Snow (S)	Wind (W)
Self Weight	0'	14'- 8 5/8"	Self Weight	Top	12 lb/ft	-	-	-
Uniform	0'	9'- 8 3/8"	FC1 Floor Decking (Plan View Fill)	Top	13 lb/ft	27 lb/ft	-	-
Uniform	9'- 8 3/8"	14'- 8 5/8"	FC1 Floor Decking (Plan View Fill)	Top	11 lb/ft	22 lb/ft	-	-
Point	9'- 7 1/2"	9'- 7 1/2"	B6(i569)	Back	388 lb	754 lb	-	-
Point	14'- 8 3/8"	14'- 8 3/8"	User Load	Top	350 lb	700 lb	-	-

UNFACTORED REACTIONS

ID	Start Loc	End Loc	Source	Dead (D)	Live (L)	Snow (S)	Wind (W)
1	0'	0'- 2 3/8"	W6(i14)	316 lb	451 lb	-	-
2	14'- 6 7/8"	14'- 8 5/8"	PBO1(i31)	783 lb	1378 lb	-	-

DESIGN NOTES

- The dead loads used in the design of this member were applied to the structure as sloped dead loads.
- Lateral stability factor (KL) was based on user preference to use the width of all plies. (Consult with manufacturer for guideline pertaining to this design option.)
- Analysis and Design has been performed using precision loading from actual modeled conditions. Some loads may have been modified to simplify reporting.
- Tributary Loads have been generated based on actual spacing between members in the model which may differ from the default system spacing. The actual loads applied to the member are shown in the Specified Loads table.
- Transfer reactions may differ from design results as allowed per building codes and standard load distribution practices.
- This report is based on modeled conditions input by the user. Source information for the loads and supports are provided for reference only. Verify that all loads and support conditions are correct.
- Review all loads and reactions to ensure that the member/bearing/connector/structure can resist adequately. Unless already specified on this report, anchorage for uplift reactions to be specified by others. Installation of member and accessories (if required) as per manufacturer's instruction.
- When the applied loads are coming from a member/post/wall above that does not sit directly on this beam, adequate load transfer elements, such as squash blocks, wall studs, or beveled plates are required to transfer the loads to this beam.

PLY TO PLY CONNECTION

- Member design assumed proper ply to ply connection by others. Fastener spacing along length of member must not exceed 4 times depth of member. Verify connection between plies according to code specification and follow the manufacturer's installation instruction. Loads assumed to be distributed equally to each ply.



STRUCTURAL COMPONENT ONLY
DWG # TF22081036



BUILDER: **GREENPARK HOMES**
SITE: **BARLASSINA CONSTRUCTION**
MODEL: **CHERRY 3E**
CITY: **CAMBRIDGE**

Job Name: **CHERRY 3E EL 1,2**
Level: **1ST FLR FRAMING**
Label: **B4 - i585**
Type: **Beam**

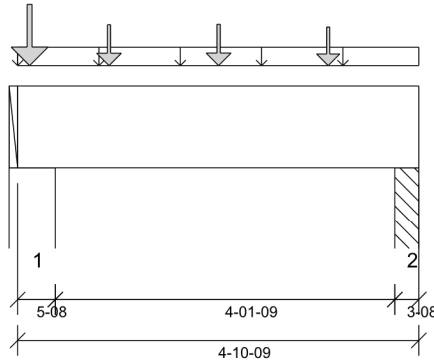
1 Ply Member
1 3/4" x 11 7/8" (2.0E 3100)
WestFraser LVL

Status:
**Design
Passed**

Illustration Not to Scale. Pitch: 0/12

Designed by Single Member Design Engine in MiTek® Structure Version
8.5.3.233.Update5.15

Report Version: 2021.03.26 08/17/2022 09:02



DESIGN INFORMATION

Building Code: NBCC 2015, Part9, BCBC 2018,
ABC 2019, OBC 2012 (2019
Amendment)

Design Methodology: LSD

Service Condition: Dry

LL Deflection Limit: L/360,

TL Deflection Limit: L/240,

Lateral Restraint Requirements:

Both ends of the member and the outer supports
must be laterally restrained. Top and bottom edges
of the member must be fully restrained or have the
following maximum unbraced length:

Top: 0' Bottom: 1'- 1 1/2"

Factored Resistance of Support Material:

- 615 psi Wall @ 0'- 4 1/2"
- 615 psi Column @ 4'- 8 1/16"

ANALYSIS RESULTS

Design Criteria	Location	Load Combination	LDF	Design	Limit	Result
Factored Pos. Moment:	2'- 5 3/8"	1.25D + 1.5L	1.00	1555 lb ft	17672 lb ft	Passed - 9%
Factored Neg. Moment:	0'- 4 1/2"	1.25D + 1.5L	1.00	347 lb ft	17672 lb ft	Passed - 2%
Factored Shear:	1'- 5 3/8"	1.25D + 1.5L	1.00	1447 lb	6908 lb	Passed - 21%

SUPPORT AND REACTION INFORMATION

ID	Input Bearing Length	Controlling Load Combination	LDF	Factored Downward Reaction	Factored Uplift Reaction	Factored Resistance of Member	Factored Resistance of Support	Result
1	5'-08"	1.25D + 1.5L	1.00	3054 lb		10010 lb	5921 lb	Passed - 52%
2	3'-08"	1.25D + 1.5L	1.00	1258 lb		6370 lb	3767 lb	Passed - 33%

SPECIFIED LOADS

Type	Start Loc	End Loc	Source	Face	Dead (D)	Live (L)	Snow (S)	Wind (W)
Self Weight	0'	4'- 10 9/16"	Self Weight	Top	6 lb/ft	-	-	-
Uniform	0'	4'- 10 9/16"	User Load	Top	60 lb/ft	-	-	-
Point	1'- 1 3/8"	1'- 1 3/8"	J3(i549)	Back	194 lb	389 lb	-	-
Point	2'- 5 3/8"	2'- 5 3/8"	J3(i543)	Back	199 lb	397 lb	-	-
Point	3'- 9 3/8"	3'- 9 3/8"	J3(i535)	Back	177 lb	354 lb	-	-
Point	0'- 1 3/4"	0'- 1 3/4"	User Load	Top	350 lb	700 lb	-	-

UNFACTORED REACTIONS

ID	Start Loc	End Loc	Source	Dead (D)	Live (L)	Snow (S)	Wind (W)
1	0'	0'- 5 1/2"	2(i26)	848 lb	1363 lb	-	-
2	4'- 7 1/16"	4'- 10 9/16"	PBO1(i31)	393 lb	477 lb	-	-

DESIGN NOTES

- The dead loads used in the design of this member were applied to the structure as sloped dead loads.
- Analysis and Design has been performed using precision loading from actual modeled conditions. Some loads may have been modified to simplify reporting.
- Tributary Loads have been generated based on actual spacing between members in the model which may differ from the default system spacing. The actual loads applied to the member are shown in the Specified Loads table.
- Transfer reactions may differ from design results as allowed per building codes and standard load distribution practices.
- This report is based on modeled conditions input by the user. Source information for the loads and supports are provided for reference only. Verify that all loads and support conditions are correct.
- Review all loads and reactions to ensure that the member/bearing/connector/structure can resist adequately. Unless already specified on this report, anchorage for uplift reactions to be specified by others. Installation of member and accessories (if required) as per manufacturer's instruction.
- When the applied loads are coming from a member/post/wall above that does not sit directly on this beam, adequate load transfer elements, such as squash blocks, wall studs, or beveled plates are required to transfer the loads to this beam.



STRUCTURAL COMPONENT ONLY
DWG # TF22081037



BUILDER: **GREENPARK HOMES**
SITE: **BARLASSINA CONSTRUCTION**
MODEL: **CHERRY 3E**
CITY: **CAMBRIDGE**

Job Name: **CHERRY 3E EL 1,2**
Level: **1ST FLR FRAMING**
Label: **B5 - i586**
Type: **Beam**

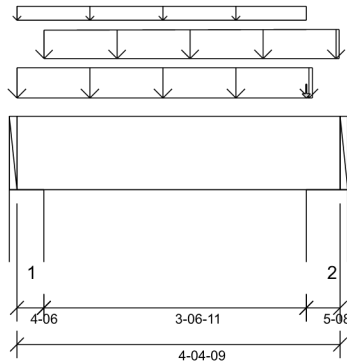
1 Ply Member
1 3/4" x 11 7/8" (2.0E 3100)
WestFraser LVL

Status:
Design Passed

Illustration Not to Scale. Pitch: 0/12

Designed by Single Member Design Engine in MiTek® Structure Version 8.5.3.233.Update5.15

Report Version: 2021.03.26 08/17/2022 09:02



DESIGN INFORMATION

Building Code: NBCC 2015, Part9, BCBC 2018, ABC 2019, OBC 2012 (2019 Amendment)

Design Methodology: LSD

Service Condition: Dry

LL Deflection Limit: L/360,

TL Deflection Limit: L/240,

Lateral Restraint Requirements:

Both ends of the member and the outer supports must be laterally restrained. Top and bottom edges of the member must be fully restrained or have the following maximum unbraced length:

Top: 0' Bottom: 1'- 1 1/2"

Factored Resistance of Support Material:

- 615 psi Wall @ 0'- 3 3/8"
- 615 psi Wall @ 4'- 1/16"

ANALYSIS RESULTS

Design Criteria	Location	Load Combination	LDF	Design	Limit	Result
Factored Pos. Moment:	2'- 4 7/16"	1.25D + 1.5L	1.00	1770 lb ft	17672 lb ft	Passed - 10%
Factored Shear:	2'- 11 3/16"	1.25D + 1.5L	1.00	1459 lb	6908 lb	Passed - 21%

SUPPORT AND REACTION INFORMATION

ID	Input Bearing Length	Controlling Load Combination	LDF	Factored Downward Reaction	Factored Uplift Reaction	Factored Resistance of Member	Factored Resistance of Support	Result
1	4-06	1.25D + 1.5L	1.00	1941 lb		7963 lb	4710 lb	Passed - 41%
2	5-08	1.25D + 1.5L	1.00	2025 lb		10010 lb	5921 lb	Passed - 34%

SPECIFIED LOADS

Type	Start Loc	End Loc	Source	Face	Dead (D)	Live (L)	Snow (S)	Wind (W)
Self Weight	0'	4'- 4 9/16"	Self Weight	Top	6 lb/ft	-	-	-
Uniform	0'	4'- 1/16"	User Load	Top	120 lb/ft	240 lb/ft	-	-
Uniform	0'	3'- 11 1/16"	FC1 Floor Decking (Plan View Fill)	Top	2 lb/ft	3 lb/ft	-	-
Tapered	0'- 4 7/16"	4'- 4 7/16"	Smoothed Load	Back	107 To 113 lb/ft	214 To 224 lb/ft	-	-
Point	3'- 11 1/16"	3'- 11 1/16"	FC1 Floor Decking (Plan View Fill)	Top	1 lb	1 lb	-	-

UNFACTORED REACTIONS

ID	Start Loc	End Loc	Source	Dead (D)	Live (L)	Snow (S)	Wind (W)
1	0'	0'- 4 3/8"	W14(i23)	466 lb	906 lb	-	-
2	3'- 11 1/16"	4'- 4 9/16"	2(i26)	486 lb	945 lb	-	-

DESIGN NOTES

- The dead loads used in the design of this member were applied to the structure as sloped dead loads.
- Analysis and Design has been performed using precision loading from actual modeled conditions. Some loads may have been modified to simplify reporting.
- Tributary Loads have been generated based on actual spacing between members in the model which may differ from the default system spacing. The actual loads applied to the member are shown in the Specified Loads table.
- Transfer reactions may differ from design results as allowed per building codes and standard load distribution practices.
- This report is based on modeled conditions input by the user. Source information for the loads and supports are provided for reference only. Verify that all loads and support conditions are correct.
- Review all loads and reactions to ensure that the member/bearing/connector/structure can resist adequately. Unless already specified on this report, anchorage for uplift reactions to be specified by others. Installation of member and accessories (if required) as per manufacturer's instruction.
- When the applied loads are coming from a member/post/wall above that does not sit directly on this beam, adequate load transfer elements, such as squash blocks, wall studs, or beveled plates are required to transfer the loads to this beam.



STRUCTURAL COMPONENT ONLY
DWG # TF22081038



BUILDER: **GREENPARK HOMES**
SITE: **BARLASSINA CONSTRUCTION**
MODEL: **CHERRY 3E**
CITY: **CAMBRIDGE**

Job Name: **CHERRY 3E EL 1,2**
Level: **1ST FLR FRAMING**
Label: **B6 - i569**
Type: **Beam**

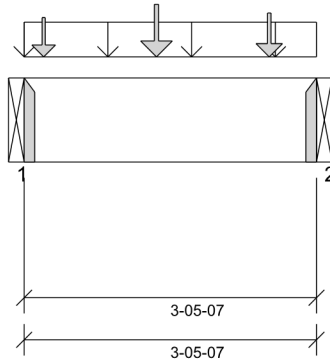
1 Ply Member
1 3/4" x 11 7/8" (2.0E 3100)
WestFraser LVL

Status:
Design Passed

Illustration Not to Scale. Pitch: 0/12

Designed by Single Member Design Engine in MiTek® Structure Version 8.5.3.233.Update5.15

Report Version: 2021.03.26 08/17/2022 09:02



DESIGN INFORMATION

Building Code: NBCC 2015, Part9, BCBC 2018, ABC 2019, OBC 2012 (2019 Amendment)

Design Methodology: LSD

Service Condition: Dry

LL Deflection Limit: L/360,

TL Deflection Limit: L/240,

Lateral Restraint Requirements:

Both ends of the member and the outer supports must be laterally restrained. Top and bottom edges of the member must be fully restrained or have the following maximum unbraced length:

Top: 0' Bottom: 1'- 1 1/2"

Factored Resistance of Support Material:

- 615 psi Beam @ 0'
- 615 psi Beam @ 3'- 5 7/16"

ANALYSIS RESULTS

Design Criteria	Location	Load Combination	LDF	Design	Limit	Result
Factored Pos. Moment:	1'- 6 3/4"	1.25D + 1.5L	1.00	1387 lb ft	17672 lb ft	Passed - 8%
Factored Shear:	0'- 11 7/8"	1.25D + 1.5L	1.00	728 lb	6908 lb	Passed - 11%

SUPPORT AND REACTION INFORMATION

ID	Input Bearing Length	Controlling Load Combination	LDF	Factored Downward Reaction	Factored Uplift Reaction	Factored Resistance of Member	Factored Resistance of Support	Result
1	1-08	1.25D + 1.5L	1.00	1593 lb		2730 lb	-	Passed - 58%
2	1-08	1.25D + 1.5L	1.00	1520 lb		2730 lb	-	Passed - 56%

CONNECTOR INFORMATION

ID	Part No.	Manufacturer	Nailing Requirements			Other Information or Requirement for Reinforcement Accessories
			Top	Face	Member	
1	HUS1.81/10		-	-	-	Connector manually specified by the user.
2	HUS1.81/10		-	-	-	Connector manually specified by the user.

* Connectors: Refer to manufacturer's specifications, fasteners requirements and installation instruction. Where header fasteners are longer than the width of the supporting member, install backer block or clinch header nails.

SPECIFIED LOADS

Type	Start Loc	End Loc	Source	Face	Dead (D)	Live (L)	Snow (S)	Wind (W)
Self Weight	0'	3'- 5 7/16"	Self Weight	Top	6 lb/ft	-	-	-
Uniform	0'	3'- 5 7/16"	User Load	Top	120 lb/ft	240 lb/ft	-	-
Point	0'- 2 3/4"	0'- 2 3/4"	J5(i525)	Back	83 lb	166 lb	-	-
Point	1'- 6 3/4"	1'- 6 3/4"	J5(i556)	Back	130 lb	259 lb	-	-
Point	2'- 10 3/4"	2'- 10 3/4"	J5(i550)	Back	99 lb	198 lb	-	-

UNFACTORED REACTIONS

ID	Start Loc	End Loc	Source	Dead (D)	Live (L)	Snow (S)	Wind (W)
1	0'	0'	B3(i584)	388 lb	754 lb	-	-
2	3'- 5 7/16"	3'- 5 7/16"	B1(i574)	359 lb	698 lb	-	-

DESIGN NOTES

- The dead loads used in the design of this member were applied to the structure as sloped dead loads.
- Analysis and Design has been performed using precision loading from actual modeled conditions. Some loads may have been modified to simplify reporting.
- Tributary Loads have been generated based on actual spacing between members in the model which may differ from the default system spacing. The actual loads applied to the member are shown in the Specified Loads table.
- Transfer reactions may differ from design results as allowed per building codes and standard load distribution practices.
- This report is based on modeled conditions input by the user. Source information for the loads and supports are provided for reference only. Verify that all loads and support conditions are correct.
- Review all loads and reactions to ensure that the member/bearing/connector/structure can resist adequately. Unless already specified on this report, anchorage for uplift reactions to be specified by others. Installation of member and accessories (if required) as per manufacturer's instruction.
- When the applied loads are coming from a member/post/wall above that does not sit directly on this beam, adequate load transfer elements, such as squash blocks, wall studs, or beveled plates are required to transfer the loads to this beam.



STRUCTURAL COMPONENT ONLY
DWG # TF22081039



BUILDER: **GREENPARK HOMES**
SITE: **BARLASSINA CONSTRUCTION**
MODEL: **CHERRY 3E**
CITY: **CAMBRIDGE**

Job Name: **CHERRY 3E EL 1,2**
Level: **2ND FLR FRAMING**
Label: **B7 - i131**
Type: **Beam**

2 Ply Member
1 3/4" x 11 7/8" (2.0E 3100)
WestFraser LVL

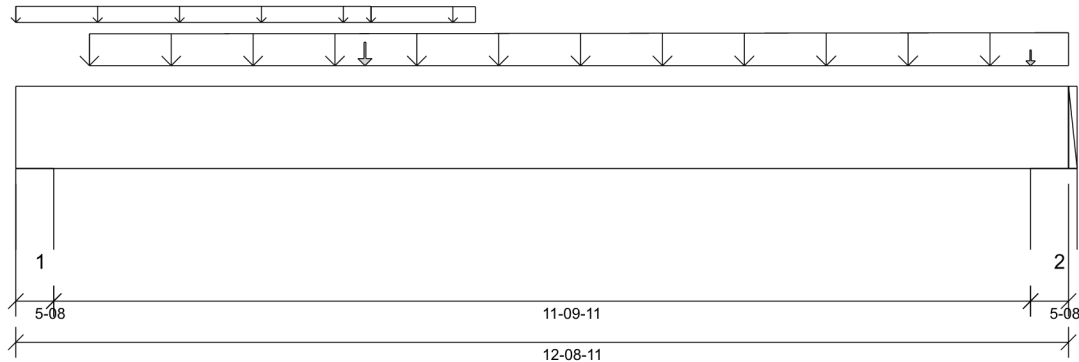
Status:
Design Passed

Illustration Not to Scale. Pitch: 0/12

Designed by Single Member Design Engine in MiTek® Structure Version
8.5.3.233.Update5.15

Report Version: 2021.03.26

08/17/2022 09:02



DESIGN INFORMATION

Building Code: NBCC 2015, Part9, BCBC 2018,
ABC 2019, OBC 2012 (2019
Amendment)

Design Methodology: LSD

Service Condition: Dry

LL Deflection Limit: L/360,

TL Deflection Limit: L/240,

Lateral Restraint Requirements:

Both ends of the member and the outer supports
must be laterally restrained. Top and bottom edges
of the member must be fully restrained or have the
following maximum unbraced length:

Top: 0' Bottom: 1'- 1 1/2"

Factored Resistance of Support Material:

- 615 psi Wall @ 0'- 4 1/2"
- 615 psi Wall @ 12'- 4 3/16"

ANALYSIS RESULTS

Design Criteria	Location	Load Combination	LDF	Design	Limit	Result
Factored Pos. Moment:	6'- 10 11/16"	1.25D + 1.5L	1.00	8833 lb ft	35345 lb ft	Passed - 25%
Factored Shear:	11'- 3 5/16"	1.25D + 1.5L	1.00	3156 lb	13815 lb	Passed - 23%
Live Load (LL) Pos. Defl.:	6'- 4 1/8"	L		0.110"	L/360	Passed - L/999
Total Load (TL) Pos. Defl.:	6'- 4 1/8"	D + L		0.171"	L/240	Passed - L/829

SUPPORT AND REACTION INFORMATION

ID	Input Bearing Length	Controlling Load Combination	LDF	Factored Downward Reaction	Factored Uplift Reaction	Factored Resistance of Member	Factored Resistance of Support	Result
1	5-08	1.25D + 1.5L	1.00	2746 lb		20020 lb	11843 lb	Passed - 23%
2	5-08	1.25D + 1.5L	1.00	3184 lb		20020 lb	11843 lb	Passed - 27%

SPECIFIED LOADS

Type	Start Loc	End Loc	Source	Face	Dead (D)	Live (L)	Snow (S)	Wind (W)
Self Weight	0'	12'- 8 11/16"	Self Weight	Top	12 lb/ft	-	-	-
Uniform	0'	4'- 3 1/2"	FC2 Floor Decking (Plan View Fill)	Top	5 lb/ft	10 lb/ft	-	-
Uniform	4'- 3 1/2"	5'- 6 11/16"	FC2 Floor Decking (Plan View Fill)	Top	3 lb/ft	6 lb/ft	-	-
Tapered	0'- 10 11/16"	12'- 8 11/16"	Smoothed Load	Back	106 To 114 lb/ft	211 To 226 lb/ft	-	-
Point	4'- 2 5/8"	4'- 2 5/8"	B9(i133)	Front	32 lb	55 lb	-	-
Point	12'- 3 3/16"	12'- 3 3/16"	FC2 Floor Decking (Plan View Fill)	Top	1 lb	3 lb	-	-

UNFACTORED REACTIONS

ID	Start Loc	End Loc	Source	Dead (D)	Live (L)	Snow (S)	Wind (W)
1	0'	0'- 5 1/2"	4(i129)	700 lb	1240 lb	-	-
2	12'- 3 3/16"	12'- 8 11/16"	6(i130)	808 lb	1457 lb	-	-

DESIGN NOTES

- The dead loads used in the design of this member were applied to the structure as sloped dead loads.
- Lateral stability factor (KL) was based on user preference to use the width of all plies. (Consult with manufacturer for guideline pertaining to this design option.)
- Analysis and Design has been performed using precision loading from actual modeled conditions. Some loads may have been modified to simplify reporting.
- Tributary Loads have been generated based on actual spacing between members in the model which may differ from the default system spacing. The actual loads applied to the member are shown in the Specified Loads table.
- Transfer reactions may differ from design results as allowed per building codes and standard load distribution practices.
- This report is based on modeled conditions input by the user. Source information for the loads and supports are provided for reference only. Verify that all loads and support conditions are correct.
- Review all loads and reactions to ensure that the member/bearing/connector/structure can resist adequately. Unless already specified on this report, anchorage for uplift reactions to be specified by others. Installation of member and accessories (if required) as per manufacturer's instruction.
- When the applied loads are coming from a member/post/wall above that does not sit directly on this beam, adequate load transfer elements, such as squash blocks, wall studs, or beveled plates are required to transfer the loads to this beam.

PLY TO PLY CONNECTION

- Member design assumed proper ply to ply connection by others. Fastener spacing along length of member must not exceed 4 times depth of member. Verify connection between plies according to code specification and follow the manufacturer's installation instruction. Loads assumed to be distributed equally to each ply.



STRUCTURAL COMPONENT ONLY
DWG # TF22081040



BUILDER: **GREENPARK HOMES**
SITE: **BARLASSINA CONSTRUCTION**
MODEL: **CHERRY 3E**
CITY: **CAMBRIDGE**

Job Name: **CHERRY 3E EL 1,2**
Level: **2ND FLR FRAMING**
Label: **B8 - i583**
Type: **Beam**

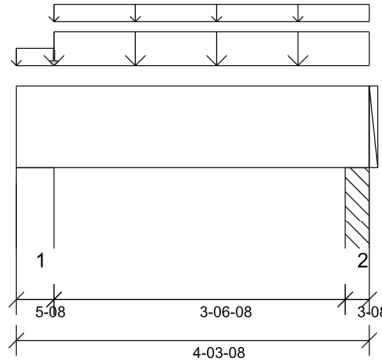
1 Ply Member
1 3/4" x 11 7/8" (2.0E 3100)
WestFraser LVL

Status:
Design Passed

Illustration Not to Scale. Pitch: 0/12

Designed by Single Member Design Engine in MiTek® Structure Version 8.5.3.233.Update5.15

Report Version: 2021.03.26 08/17/2022 09:02



DESIGN INFORMATION

Building Code: NBCC 2015, Part9, BCBC 2018, ABC 2019, OBC 2012 (2019 Amendment)

Design Methodology: LSD

Service Condition: Dry

LL Deflection Limit: L/360,

TL Deflection Limit: L/240,

Lateral Restraint Requirements:

Both ends of the member and the outer supports must be laterally restrained. Top and bottom edges of the member must be fully restrained or have the following maximum unbraced length:

Top: 0' Bottom: 3'- 8 1/4"

Factored Resistance of Support Material:

- 615 psi Wall @ 0'- 4 1/2"
- 615 psi Column @ 4'- 1"

ANALYSIS RESULTS

Design Criteria	Location	Load Combination	LDF	Design	Limit	Result
Factored Pos. Moment:	2'- 2 3/4"	1.25D + 1.5L	1.00	978 lb ft	17672 lb ft	Passed - 6%
Factored Shear:	3'- 1/8"	1.25D + 1.5L	1.00	807 lb	6908 lb	Passed - 12%

SUPPORT AND REACTION INFORMATION

ID	Input Bearing Length	Controlling Load Combination	LDF	Factored Downward Reaction	Factored Uplift Reaction	Factored Resistance of Member	Factored Resistance of Support	Result
1	5-08	1.25D + 1.5L	1.00	1045 lb		10010 lb	5921 lb	Passed - 18%
2	3-08	1.25D + 1.5L	1.00	1186 lb		6370 lb	3767 lb	Passed - 31%

SPECIFIED LOADS

Type	Start Loc	End Loc	Source	Face	Dead (D)	Live (L)	Snow (S)	Wind (W)
Self Weight	0'	4'- 3 1/2"	Self Weight	Top	6 lb/ft	-	-	-
Uniform	-0'	0'- 5 1/2"	FC2 Floor Decking (Plan View Fill)	Top	13 lb/ft	25 lb/ft	-	-
Uniform	0'- 5 1/2"	4'- 3 1/2"	User Load	Front	120 lb/ft	240 lb/ft	-	-
Uniform	0'- 5 1/2"	4'- 3 1/2"	FC2 Floor Decking (Plan View Fill)	Top	13 lb/ft	27 lb/ft	-	-
Point	0'- 5 1/2"	0'- 5 1/2"	FC2 Floor Decking (Plan View Fill)	Top	1 lb	1 lb	-	-

UNFACTORED REACTIONS

ID	Start Loc	End Loc	Source	Dead (D)	Live (L)	Snow (S)	Wind (W)
1	0'	0'- 5 1/2"	3(i128)	261 lb	496 lb	-	-
2	4'	4'- 3 1/2"	PBO2(i134)	282 lb	539 lb	-	-

DESIGN NOTES

- The dead loads used in the design of this member were applied to the structure as sloped dead loads.
- Analysis and Design has been performed using precision loading from actual modeled conditions. Some loads may have been modified to simplify reporting.
- Tributary Loads have been generated based on actual spacing between members in the model which may differ from the default system spacing. The actual loads applied to the member are shown in the Specified Loads table.
- Transfer reactions may differ from design results as allowed per building codes and standard load distribution practices.
- This report is based on modeled conditions input by the user. Source information for the loads and supports are provided for reference only. Verify that all loads and support conditions are correct.
- Review all loads and reactions to ensure that the member/bearing/connector/structure can resist adequately. Unless already specified on this report, anchorage for uplift reactions to be specified by others. Installation of member and accessories (if required) as per manufacturer's instruction.
- When the applied loads are coming from a member/post/wall above that does not sit directly on this beam, adequate load transfer elements, such as squash blocks, wall studs, or beveled plates are required to transfer the loads to this beam.



STRUCTURAL COMPONENT ONLY
DWG # TF22081041



BUILDER: **GREENPARK HOMES**
SITE: **BARLASSINA CONSTRUCTION**
MODEL: **CHERRY 3E**
CITY: **CAMBRIDGE**

Job Name: **CHERRY 3E EL 1,2**
Level: **2ND FLR FRAMING**
Label: **B9 - i133**
Type: **Beam**

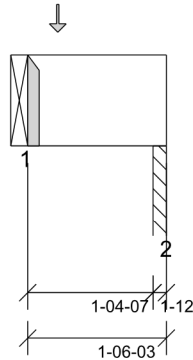
1 Ply Member
1 3/4" x 11 7/8" (2.0E 3100)
WestFraser LVL

Status:
Design Passed

Illustration Not to Scale. Pitch: 0/12

Designed by Single Member Design Engine in MiTek® Structure Version 8.5.3.233.Update5.15

Report Version: 2021.03.26 08/17/2022 09:02



DESIGN INFORMATION

Building Code: NBCC 2015, Part9, BCBC 2018, ABC 2019, OBC 2012 (2019 Amendment)

Design Methodology: LSD

Service Condition: Dry

LL Deflection Limit: L/360,

TL Deflection Limit: L/240,

Lateral Restraint Requirements:

Both ends of the member and the outer supports must be laterally restrained. Top and bottom edges of the member must be fully restrained or have the following maximum unbraced length:

Top: 0' Bottom: 1'- 1"

Factored Resistance of Support Material:

- 615 psi Beam @ 0'
- 615 psi Column @ 1'- 5 7/16"

ANALYSIS RESULTS

Design Criteria	Location	Load Combination	LDF	Design	Limit	Result
Factored Pos. Moment:	0'- 3 15/16"	1.25D + 1.5L	1.00	40 lb ft	17672 lb ft	Passed - 0%
Factored Shear:	0'- 11 7/8"	1.25D + 1.5L	1.00	115 lb	6908 lb	Passed - 2%

SUPPORT AND REACTION INFORMATION

ID	Input Bearing Length	Controlling Load Combination	LDF	Factored Downward Reaction	Factored Uplift Reaction	Factored Resistance of Member	Factored Resistance of Support	Result
1	1-08	1.25D + 1.5L	1.00	123 lb		2730 lb	-	Passed - 4%
2	1-12	1.25D + 1.5L	1.00	40 lb		3185 lb	1883 lb	Passed - 2%

CONNECTOR INFORMATION

ID	Part No.	Manufacturer	Nailing Requirements			Other Information or Requirement for Reinforcement Accessories
			Top	Face	Member	
1	HUS1.81/10		-	-	-	Connector manually specified by the user.
* Connectors: Refer to manufacturer's specifications, fasteners requirements and installation instruction. Where header fasteners are longer than the width of the supporting member, install backer block or clinch header nails.						

SPECIFIED LOADS

Type	Start Loc	End Loc	Source	Face	Dead (D)	Live (L)	Snow (S)	Wind (W)
Self Weight	0'	1'- 6 3/16"	Self Weight	Top	6 lb/ft	-	-	-
Point	0'- 3 15/16"	0'- 3 15/16"	J3(i191)	Front	36 lb	71 lb	-	-

UNFACTORED REACTIONS

ID	Start Loc	End Loc	Source	Dead (D)	Live (L)	Snow (S)	Wind (W)
1	0'	0'	B7(i131)	32 lb	55 lb	-	-
2	1'- 4 7/16"	1'- 6 3/16"	PBO2(i134)	13 lb	16 lb	-	-

DESIGN NOTES

- The dead loads used in the design of this member were applied to the structure as sloped dead loads.
- Analysis and Design has been performed using precision loading from actual modeled conditions. Some loads may have been modified to simplify reporting.
- Tributary Loads have been generated based on actual spacing between members in the model which may differ from the default system spacing. The actual loads applied to the member are shown in the Specified Loads table.
- Transfer reactions may differ from design results as allowed per building codes and standard load distribution practices.
- This report is based on modeled conditions input by the user. Source information for the loads and supports are provided for reference only. Verify that all loads and support conditions are correct.
- Review all loads and reactions to ensure that the member/bearing/connector/structure can resist adequately. Unless already specified on this report, anchorage for uplift reactions to be specified by others. Installation of member and accessories (if required) as per manufacturer's instruction.
- When the applied loads are coming from a member/post/wall above that does not sit directly on this beam, adequate load transfer elements, such as squash blocks, wall studs, or beveled plates are required to transfer the loads to this beam.



STRUCTURAL COMPONENT ONLY
DWG # TF22081042

Maximum Floor Spans – S2.1

Design Criteria

Spans:	Simple span
Loads:	Live load = 40 psf and dead load = 15 psf
Deflection limits:	L/480 under live load and L/240 under total load
Sheathing:	5/8 in. nailed-glued oriented strand board (OSB) sheathing

Maximum Floor Spans

Joist depth	Joist series	Bare On centre spacing				1/2 in. gypsum ceiling On centre spacing			
		12"	16"	19.2"	24"	12"	16"	19.2"	24"
9-1/2"	NI-20	15'-1"	14'-3"	13'-10"	-	15'-7"	14'-9"	14'-3"	-
	NI-40x	16'-2"	15'-3"	14'-8"	-	16'-7"	15'-8"	15'-1"	-
	NI-60	16'-4"	15'-4"	14'-10"	-	16'-9"	15'-9"	15'-3"	-
	NI-80	17'-3"	16'-3"	15'-8"	-	17'-8"	16'-7"	16'-0"	-
11-7/8"	NI-20	17'-0"	16'-0"	15'-6"	-	17'-6"	16'-7"	16'-0"	-
	NI-40x	18'-2"	17'-1"	16'-6"	-	18'-9"	17'-6"	16'-11"	-
	NI-60	18'-5"	17'-3"	16'-8"	-	19'-0"	17'-8"	17'-1"	-
	NI-80	19'-9"	18'-3"	17'-7"	-	20'-4"	18'-10"	18'-0"	-
	NI-90	20'-2"	18'-8"	17'-10"	-	20'-9"	19'-2"	18'-4"	-
14"	NI-40x	20'-1"	18'-8"	17'-10"	-	20'-10"	19'-4"	18'-6"	-
	NI-60	20'-6"	18'-11"	18'-2"	-	21'-2"	19'-8"	18'-9"	-
	NI-80	21'-11"	20'-3"	19'-4"	-	22'-7"	20'-11"	20'-0"	-
	NI-90	22'-5"	20'-8"	19'-9"	-	23'-0"	21'-4"	20'-4"	-
16"	NI-60	22'-4"	20'-8"	19'-9"	-	23'-1"	21'-5"	20'-6"	-
	NI-80	23'-11"	22'-1"	21'-1"	-	24'-8"	22'-10"	21'-9"	-
	NI-90	24'-5"	22'-6"	21'-6"	-	25'-1"	23'-2"	22'-2"	-

Joist depth	Joist series	Mid-span blocking with 1x4 inch strap On centre spacing				Mid-span blocking and 1/2 in. gypsum ceiling On centre spacing			
		12"	16"	19.2"	24"	12"	16"	19.2"	24"
9-1/2"	NI-20	16'-8"	15'-3"	14'-5"	-	16'-8"	15'-3"	14'-5"	-
	NI-40x	17'-11"	17'-0"	16'-1"	-	18'-5"	17'-1"	16'-1"	-
	NI-60	18'-2"	17'-1"	16'-4"	-	18'-8"	17'-4"	16'-4"	-
	NI-80	19'-5"	18'-0"	17'-5"	-	19'-10"	18'-5"	17'-8"	-
11-7/8"	NI-20	19'-7"	18'-2"	17'-3"	-	19'-11"	18'-3"	17'-3"	-
	NI-40x	21'-1"	19'-7"	18'-8"	-	21'-8"	20'-2"	19'-2"	-
	NI-60	21'-4"	19'-9"	18'-11"	-	21'-11"	20'-5"	19'-6"	-
	NI-80	22'-9"	21'-1"	20'-2"	-	23'-3"	21'-8"	20'-8"	-
	NI-90	23'-3"	21'-6"	20'-6"	-	23'-9"	22'-0"	21'-0"	-
14"	NI-40x	23'-8"	21'-11"	20'-11"	-	24'-4"	22'-8"	21'-8"	-
	NI-60	24'-0"	22'-3"	21'-3"	-	24'-8"	22'-11"	21'-11"	-
	NI-80	25'-7"	23'-9"	22'-7"	-	26'-2"	24'-4"	23'-3"	-
	NI-90	26'-1"	24'-2"	23'-0"	-	26'-8"	24'-9"	23'-7"	-
16"	NI-60	26'-5"	24'-6"	23'-5"	-	27'-2"	25'-3"	24'-2"	-
	NI-80	28'-2"	26'-1"	24'-10"	-	28'-10"	26'-9"	25'-6"	-
	NI-90	28'-8"	26'-6"	25'-3"	-	29'-3"	27'-2"	25'-11"	-

Notes:

1. The tabulated clear spans are based on CSA O86-14 and NBC 2015, and are applicable to residential floor construction meeting the above design criteria.
2. For multiple-span applications, the end spans shall be 40% or more of the adjacent span.
3. Minimum bearing length shall be 1-3/4 inch for end bearings, and 3-1/2 inches for intermediate bearings.
4. Bearing stiffeners are not required when I-joists are used in accordance with this table, except as required for hangers.
5. Nordic I-joists are listed in CCMC Evaluation Report 13032-R and APA Product Report PR-L274C.

Maximum Floor Spans – S4.1

Design Criteria

Spans:	Simple span
Loads:	Live load = 40 psf and dead load = 15 psf
Deflection limits:	L/480 under live load and L/240 under total load
Sheathing:	3/4 in. nailed-glued oriented strand board (OSB) sheathing

Maximum Floor Spans

Joist depth	Joist series	Bare On centre spacing				1/2 in. gypsum ceiling On centre spacing			
		12"	16"	19.2"	24"	12"	16"	19.2"	24"
9-1/2"	NI-20	15'-11"	15'-0"	14'-6"	13'-5"	16'-5"	15'-5"	14'-6"	13'-5"
	NI-40x	17'-0"	16'-0"	15'-5"	14'-10"	17'-5"	16'-5"	15'-10"	15'-2"
	NI-60	17'-2"	16'-2"	15'-7"	14'-11"	17'-7"	16'-7"	16'-0"	15'-4"
	NI-80	18'-3"	17'-1"	16'-5"	15'-9"	18'-8"	17'-5"	16'-9"	16'-1"
11-7/8"	NI-20	17'-11"	16'-11"	16'-3"	15'-8"	18'-7"	17'-5"	16'-10"	16'-2"
	NI-40x	19'-4"	17'-11"	17'-3"	16'-7"	19'-11"	18'-6"	17'-9"	17'-0"
	NI-60	19'-7"	18'-2"	17'-6"	16'-9"	20'-2"	18'-9"	17'-11"	17'-2"
	NI-80	21'-1"	19'-6"	18'-6"	17'-7"	21'-7"	20'-0"	19'-0"	18'-0"
	NI-90	21'-6"	19'-10"	18'-11"	17'-11"	22'-0"	20'-4"	19'-5"	18'-4"
14"	NI-40x	21'-5"	19'-11"	18'-11"	18'-0"	22'-1"	20'-7"	19'-7"	18'-7"
	NI-60	21'-10"	20'-2"	19'-3"	18'-3"	22'-6"	20'-10"	19'-11"	18'-10"
	NI-80	23'-5"	21'-7"	20'-7"	19'-5"	24'-0"	22'-3"	21'-2"	20'-0"
	NI-90	23'-10"	22'-1"	21'-0"	19'-10"	24'-5"	22'-7"	21'-6"	20'-4"
16"	NI-60	23'-9"	22'-0"	21'-0"	19'-10"	24'-6"	22'-9"	21'-8"	20'-7"
	NI-80	25'-6"	23'-7"	22'-5"	21'-2"	26'-2"	24'-3"	23'-1"	21'-10"
	NI-90	26'-0"	24'-0"	22'-10"	21'-6"	26'-7"	24'-8"	23'-5"	22'-2"

Joist depth	Joist series	Mid-span blocking with 1x4 inch strap On centre spacing				Mid-span blocking and 1/2 in. gypsum ceiling On centre spacing			
		12"	16"	19.2"	24"	12"	16"	19.2"	24"
9-1/2"	NI-20	16'-10"	15'-5"	14'-6"	13'-5"	16'-10"	15'-5"	14'-6"	13'-5"
	NI-40x	18'-8"	17'-2"	16'-3"	15'-2"	18'-10"	17'-2"	16'-3"	15'-2"
	NI-60	18'-11"	17'-6"	16'-6"	15'-5"	19'-2"	17'-6"	16'-6"	15'-5"
	NI-80	20'-3"	18'-10"	17'-11"	16'-10"	20'-8"	19'-3"	18'-2"	16'-10"
11-7/8"	NI-20	20'-1"	18'-5"	17'-5"	16'-2"	20'-1"	18'-5"	17'-5"	16'-2"
	NI-40x	21'-10"	20'-4"	19'-4"	17'-8"	22'-5"	20'-6"	19'-4"	17'-8"
	NI-60	22'-1"	20'-7"	19'-8"	18'-4"	22'-8"	20'-10"	19'-8"	18'-4"
	NI-80	23'-8"	22'-0"	20'-11"	19'-10"	24'-1"	22'-6"	21'-6"	20'-0"
	NI-90	24'-1"	22'-5"	21'-4"	20'-2"	24'-7"	22'-11"	21'-10"	20'-7"
14"	NI-40x	24'-5"	22'-9"	21'-9"	19'-5"	25'-1"	23'-2"	21'-9"	19'-5"
	NI-60	24'-10"	23'-2"	22'-1"	20'-10"	25'-6"	23'-8"	22'-4"	20'-10"
	NI-80	26'-6"	24'-8"	23'-6"	22'-2"	27'-1"	25'-3"	24'-1"	22'-9"
	NI-90	27'-0"	25'-1"	23'-11"	22'-7"	27'-6"	25'-8"	24'-6"	23'-2"
16"	NI-60	27'-3"	25'-5"	24'-3"	22'-11"	28'-0"	26'-2"	24'-9"	23'-1"
	NI-80	29'-1"	27'-1"	25'-9"	24'-4"	29'-8"	27'-9"	26'-5"	25'-0"
	NI-90	29'-7"	27'-6"	26'-2"	24'-9"	30'-2"	28'-2"	26'-10"	25'-5"

Notes:

1. The tabulated clear spans are based on CSA O86-14 and NBC 2015, and are applicable to residential floor construction meeting the above design criteria.
2. For multiple-span applications, the end spans shall be 40% or more of the adjacent span.
3. Minimum bearing length shall be 1-3/4 inch for end bearings, and 3-1/2 inches for intermediate bearings.
4. Bearing stiffeners are not required when I-joists are used in accordance with this table, except as required for hangers.
5. Nordic I-joists are listed in CCMC Evaluation Report 13032-R and APA Product Report PR-L274C.

Maximum Floor Spans – S6.1

Design Criteria

Spans:	Simple span
Loads:	Live load = 40 psf and dead load = 15 psf
Deflection limits:	L/480 under live load and L/240 under total load
Sheathing:	5/8 in. nailed-glued Canadian softwood plywood

Maximum Floor Spans

Joist depth	Joist series	Bare On centre spacing				1/2 in. gypsum ceiling On centre spacing			
		12"	16"	19.2"	24"	12"	16"	19.2"	24"
9-1/2"	NI-20	14'-11"	14'-1"	13'-7"	-	15'-4"	14'-6"	14'-1"	-
	NI-40x	15'-11"	15'-0"	14'-6"	-	16'-4"	15'-5"	14'-11"	-
	NI-60	16'-1"	15'-2"	14'-8"	-	16'-6"	15'-7"	15'-1"	-
	NI-80	17'-1"	16'-1"	15'-6"	-	17'-5"	16'-5"	15'-10"	-
11-7/8"	NI-20	16'-9"	15'-10"	15'-4"	-	17'-4"	16'-4"	15'-10"	-
	NI-40x	17'-10"	16'-10"	16'-3"	-	18'-6"	17'-4"	16'-9"	-
	NI-60	18'-1"	17'-0"	16'-5"	-	18'-9"	17'-6"	16'-11"	-
	NI-80	19'-6"	18'-0"	17'-4"	-	20'-1"	18'-7"	17'-9"	-
	NI-90	19'-11"	18'-4"	17'-8"	-	20'-5"	18'-11"	18'-1"	-
14"	NI-40x	19'-10"	18'-4"	17'-8"	-	20'-6"	19'-1"	18'-3"	-
	NI-60	20'-2"	18'-8"	17'-11"	-	20'-10"	19'-4"	18'-6"	-
	NI-80	21'-8"	20'-0"	19'-1"	-	22'-4"	20'-8"	19'-9"	-
	NI-90	22'-1"	20'-5"	19'-6"	-	22'-9"	21'-0"	20'-1"	-
16"	NI-60	22'-0"	20'-4"	19'-6"	-	22'-9"	21'-1"	20'-2"	-
	NI-80	23'-7"	21'-10"	20'-10"	-	24'-4"	22'-6"	21'-6"	-
	NI-90	24'-1"	22'-2"	21'-2"	-	24'-9"	22'-11"	21'-10"	-

Joist depth	Joist series	Mid-span blocking with 1x4 inch strap On centre spacing				Mid-span blocking and 1/2 in. gypsum ceiling On centre spacing			
		12"	16"	19.2"	24"	12"	16"	19.2"	24"
9-1/2"	NI-20	16'-6"	15'-1"	14'-3"	-	16'-6"	15'-1"	14'-3"	-
	NI-40x	17'-9"	16'-10"	15'-11"	-	18'-2"	16'-11"	15'-11"	-
	NI-60	17'-11"	16'-11"	16'-2"	-	18'-5"	17'-2"	16'-2"	-
	NI-80	19'-3"	17'-10"	17'-3"	-	19'-8"	18'-3"	17'-7"	-
11-7/8"	NI-20	19'-4"	18'-0"	17'-1"	-	19'-9"	18'-1"	17'-1"	-
	NI-40x	20'-10"	19'-4"	18'-6"	-	21'-5"	19'-11"	19'-0"	-
	NI-60	21'-1"	19'-7"	18'-8"	-	21'-8"	20'-2"	19'-3"	-
	NI-80	22'-6"	20'-10"	19'-11"	-	23'-1"	21'-5"	20'-5"	-
	NI-90	23'-0"	21'-3"	20'-4"	-	23'-6"	21'-10"	20'-10"	-
14"	NI-40x	23'-5"	21'-8"	20'-9"	-	24'-0"	22'-5"	21'-5"	-
	NI-60	23'-9"	22'-0"	21'-0"	-	24'-5"	22'-8"	21'-8"	-
	NI-80	25'-4"	23'-6"	22'-5"	-	25'-11"	24'-1"	23'-0"	-
	NI-90	25'-10"	23'-11"	22'-9"	-	26'-5"	24'-6"	23'-4"	-
16"	NI-60	26'-2"	24'-3"	23'-2"	-	26'-11"	25'-0"	23'-11"	-
	NI-80	27'-11"	25'-10"	24'-7"	-	28'-7"	26'-6"	25'-3"	-
	NI-90	28'-5"	26'-3"	25'-0"	-	29'-0"	26'-11"	25'-8"	-

Notes:

1. The tabulated clear spans are based on CSA O86-14 and NBC 2015, and are applicable to residential floor construction meeting the above design criteria.
2. For multiple-span applications, the end spans shall be 40% or more of the adjacent span.
3. Minimum bearing length shall be 1-3/4 inch for end bearings, and 3-1/2 inches for intermediate bearings.
4. Bearing stiffeners are not required when I-joists are used in accordance with this table, except as required for hangers.
5. Nordic I-joists are listed in CCMC Evaluation Report 13032-R and APA Product Report PR-L274C.

Maximum Floor Spans – S7.1

Design Criteria

Spans:	Simple span
Loads:	Live load = 40 psf and dead load = 15 psf
Deflection limits:	L/480 under live load and L/240 under total load
Sheathing:	3/4 in. nailed-glued Canadian softwood plywood

Maximum Floor Spans

Joist depth	Joist series	Bare On centre spacing				1/2 in. gypsum ceiling On centre spacing			
		12"	16"	19.2"	24"	12"	16"	19.2"	24"
9-1/2"	NI-20	15'-10"	15'-0"	14'-5"	13'-5"	16'-4"	15'-5"	14'-6"	13'-5"
	NI-40x	16'-11"	15'-11"	15'-4"	14'-9"	17'-4"	16'-4"	15'-9"	15'-1"
	NI-60	17'-1"	16'-1"	15'-6"	14'-10"	17'-6"	16'-6"	15'-11"	15'-3"
	NI-80	18'-1"	17'-0"	16'-4"	15'-8"	18'-7"	17'-4"	16'-8"	16'-0"
11-7/8"	NI-20	17'-10"	16'-10"	16'-2"	15'-7"	18'-5"	17'-4"	16'-9"	16'-1"
	NI-40x	19'-3"	17'-10"	17'-2"	16'-6"	19'-10"	18'-5"	17'-8"	16'-11"
	NI-60	19'-6"	18'-1"	17'-4"	16'-8"	20'-1"	18'-8"	17'-10"	17'-1"
	NI-80	20'-11"	19'-4"	18'-5"	17'-7"	21'-5"	19'-10"	18'-11"	17'-11"
	NI-90	21'-4"	19'-9"	18'-9"	17'-10"	21'-10"	20'-3"	19'-3"	18'-3"
14"	NI-40x	21'-4"	19'-9"	18'-10"	17'-11"	22'-0"	20'-5"	19'-6"	18'-6"
	NI-60	21'-8"	20'-1"	19'-2"	18'-2"	22'-4"	20'-9"	19'-9"	18'-9"
	NI-80	23'-3"	21'-6"	20'-5"	19'-4"	23'-10"	22'-1"	21'-0"	19'-11"
	NI-90	23'-9"	21'-11"	20'-10"	19'-8"	24'-3"	22'-6"	21'-5"	20'-3"
16"	NI-60	23'-7"	21'-10"	20'-10"	19'-9"	24'-4"	22'-7"	21'-7"	20'-5"
	NI-80	25'-4"	23'-5"	22'-3"	21'-1"	26'-0"	24'-1"	22'-11"	21'-8"
	NI-90	25'-10"	23'-10"	22'-8"	21'-5"	26'-5"	24'-6"	23'-4"	22'-0"

Joist depth	Joist series	Mid-span blocking with 1x4 inch strap On centre spacing				Mid-span blocking and 1/2 in. gypsum ceiling On centre spacing			
		12"	16"	19.2"	24"	12"	16"	19.2"	24"
9-1/2"	NI-20	16'-10"	15'-5"	14'-6"	13'-5"	16'-10"	15'-5"	14'-6"	13'-5"
	NI-40x	18'-7"	17'-2"	16'-3"	15'-2"	18'-10"	17'-2"	16'-3"	15'-2"
	NI-60	18'-10"	17'-6"	16'-6"	15'-5"	19'-1"	17'-6"	16'-6"	15'-5"
	NI-80	20'-2"	18'-9"	17'-11"	16'-10"	20'-7"	19'-2"	18'-2"	16'-10"
11-7/8"	NI-20	20'-1"	18'-5"	17'-5"	16'-2"	20'-1"	18'-5"	17'-5"	16'-2"
	NI-40x	21'-9"	20'-3"	19'-4"	17'-8"	22'-4"	20'-5"	19'-4"	17'-8"
	NI-60	22'-0"	20'-6"	19'-7"	18'-4"	22'-7"	20'-10"	19'-8"	18'-4"
	NI-80	23'-6"	21'-10"	20'-10"	19'-9"	24'-0"	22'-5"	21'-4"	20'-0"
	NI-90	24'-0"	22'-4"	21'-3"	20'-1"	24'-6"	22'-10"	21'-9"	20'-7"
14"	NI-40x	24'-4"	22'-8"	21'-8"	19'-5"	25'-0"	23'-2"	21'-9"	19'-5"
	NI-60	24'-9"	23'-0"	22'-0"	20'-9"	25'-5"	23'-8"	22'-4"	20'-10"
	NI-80	26'-5"	24'-6"	23'-4"	22'-1"	27'-0"	25'-2"	24'-0"	22'-8"
	NI-90	26'-11"	25'-0"	23'-10"	22'-6"	27'-5"	25'-7"	24'-5"	23'-1"
16"	NI-60	27'-2"	25'-4"	24'-2"	22'-10"	27'-11"	26'-1"	24'-9"	23'-1"
	NI-80	29'-0"	26'-11"	25'-8"	24'-3"	29'-7"	27'-7"	26'-4"	24'-11"
	NI-90	29'-6"	27'-5"	26'-1"	24'-8"	30'-1"	28'-1"	26'-9"	25'-4"

Notes:

1. The tabulated clear spans are based on CSA O86-14 and NBC 2015, and are applicable to residential floor construction meeting the above design criteria.
2. For multiple-span applications, the end spans shall be 40% or more of the adjacent span.
3. Minimum bearing length shall be 1-3/4 inch for end bearings, and 3-1/2 inches for intermediate bearings.
4. Bearing stiffeners are not required when I-joists are used in accordance with this table, except as required for hangers.
5. Nordic I-joists are listed in CCMC Evaluation Report 13032-R and APA Product Report PR-L274C.

Maximum Floor Spans – M2.1

Design Criteria

Spans:	Simple span
Loads:	Live load = 40 psf and dead load = 20 psf
Deflection limits:	L/480 under live load and L/240 under total load
Sheathing:	5/8 in. nailed-glued oriented strand board (OSB) sheathing

Maximum Floor Spans

Joist depth	Joist series	Bare On centre spacing				1/2 in. gypsum ceiling On centre spacing			
		12"	16"	19.2"	24"	12"	16"	19.2"	24"
9-1/2"	NI-20	15'-1"	14'-3"	13'-10"	-	15'-7"	14'-9"	14'-3"	-
	NI-40x	16'-2"	15'-3"	14'-8"	-	16'-7"	15'-8"	15'-1"	-
	NI-60	16'-4"	15'-4"	14'-10"	-	16'-9"	15'-9"	15'-3"	-
	NI-80	17'-3"	16'-3"	15'-8"	-	17'-8"	16'-7"	16'-0"	-
11-7/8"	NI-20	17'-0"	16'-0"	15'-6"	-	17'-6"	16'-7"	16'-0"	-
	NI-40x	18'-2"	17'-1"	16'-6"	-	18'-9"	17'-6"	16'-11"	-
	NI-60	18'-5"	17'-3"	16'-8"	-	19'-0"	17'-8"	17'-1"	-
	NI-80	19'-9"	18'-3"	17'-7"	-	20'-4"	18'-10"	18'-0"	-
	NI-90	20'-2"	18'-8"	17'-10"	-	20'-9"	19'-2"	18'-4"	-
14"	NI-40x	20'-1"	18'-8"	17'-10"	-	20'-10"	19'-4"	18'-6"	-
	NI-60	20'-6"	18'-11"	18'-2"	-	21'-2"	19'-8"	18'-9"	-
	NI-80	21'-11"	20'-3"	19'-4"	-	22'-7"	20'-11"	20'-0"	-
	NI-90	22'-5"	20'-8"	19'-9"	-	23'-0"	21'-4"	20'-4"	-
16"	NI-60	22'-4"	20'-8"	19'-9"	-	23'-1"	21'-5"	20'-6"	-
	NI-80	23'-11"	22'-1"	21'-1"	-	24'-8"	22'-10"	21'-9"	-
	NI-90	24'-5"	22'-6"	21'-6"	-	25'-1"	23'-2"	22'-2"	-

Joist depth	Joist series	Mid-span blocking with 1x4 inch strap On centre spacing				Mid-span blocking and 1/2 in. gypsum ceiling On centre spacing			
		12"	16"	19.2"	24"	12"	16"	19.2"	24"
9-1/2"	NI-20	16'-8"	15'-3"	14'-5"	-	16'-8"	15'-3"	14'-5"	-
	NI-40x	17'-11"	17'-0"	16'-1"	-	18'-5"	17'-1"	16'-1"	-
	NI-60	18'-2"	17'-1"	16'-4"	-	18'-8"	17'-4"	16'-4"	-
	NI-80	19'-5"	18'-0"	17'-5"	-	19'-10"	18'-5"	17'-8"	-
11-7/8"	NI-20	19'-7"	18'-2"	17'-3"	-	19'-11"	18'-3"	17'-3"	-
	NI-40x	21'-1"	19'-7"	18'-8"	-	21'-8"	20'-2"	19'-0"	-
	NI-60	21'-4"	19'-9"	18'-11"	-	21'-11"	20'-5"	19'-6"	-
	NI-80	22'-9"	21'-1"	20'-2"	-	23'-3"	21'-8"	20'-8"	-
	NI-90	23'-3"	21'-6"	20'-6"	-	23'-9"	22'-0"	21'-0"	-
14"	NI-40x	23'-8"	21'-11"	20'-11"	-	24'-4"	22'-8"	20'-11"	-
	NI-60	24'-0"	22'-3"	21'-3"	-	24'-8"	22'-11"	21'-11"	-
	NI-80	25'-7"	23'-9"	22'-7"	-	26'-2"	24'-4"	23'-3"	-
	NI-90	26'-1"	24'-2"	23'-0"	-	26'-8"	24'-9"	23'-7"	-
16"	NI-60	26'-5"	24'-6"	23'-5"	-	27'-2"	25'-3"	24'-2"	-
	NI-80	28'-2"	26'-1"	24'-10"	-	28'-10"	26'-9"	25'-6"	-
	NI-90	28'-8"	26'-6"	25'-3"	-	29'-3"	27'-2"	25'-11"	-

Notes:

1. The tabulated clear spans are based on CSA O86-14 and NBC 2015, and are applicable to residential floor construction meeting the above design criteria.
2. For multiple-span applications, the end spans shall be 40% or more of the adjacent span.
3. Minimum bearing length shall be 1-3/4 inch for end bearings, and 3-1/2 inches for intermediate bearings.
4. Bearing stiffeners are not required when I-joists are used in accordance with this table, except as required for hangers.
5. Nordic I-joists are listed in CCMC Evaluation Report 13032-R and APA Product Report PR-L274C.

Maximum Floor Spans – M4.1

Design Criteria

Spans:	Simple span
Loads:	Live load = 40 psf and dead load = 20 psf
Deflection limits:	L/480 under live load and L/240 under total load
Sheathing:	3/4 in. nailed-glued oriented strand board (OSB) sheathing

Maximum Floor Spans

Joist depth	Joist series	Bare On centre spacing				1/2 in. gypsum ceiling On centre spacing			
		12"	16"	19.2"	24"	12"	16"	19.2"	24"
9-1/2"	NI-20	15'-11"	15'-0"	14'-6"	13'-5"	16'-5"	15'-5"	14'-6"	13'-5"
	NI-40x	17'-0"	16'-0"	15'-5"	14'-10"	17'-5"	16'-5"	15'-10"	14'-11"
	NI-60	17'-2"	16'-2"	15'-7"	14'-11"	17'-7"	16'-7"	16'-0"	15'-4"
	NI-80	18'-3"	17'-1"	16'-5"	15'-9"	18'-8"	17'-5"	16'-9"	16'-1"
11-7/8"	NI-20	17'-11"	16'-11"	16'-3"	15'-8"	18'-7"	17'-5"	16'-10"	16'-1"
	NI-40x	19'-4"	17'-11"	17'-3"	16'-7"	19'-11"	18'-6"	17'-9"	17'-0"
	NI-60	19'-7"	18'-2"	17'-6"	16'-9"	20'-2"	18'-9"	17'-11"	17'-2"
	NI-80	21'-1"	19'-6"	18'-6"	17'-7"	21'-7"	20'-0"	19'-0"	18'-0"
	NI-90	21'-6"	19'-10"	18'-11"	17'-11"	22'-0"	20'-4"	19'-5"	18'-4"
14"	NI-40x	21'-5"	19'-11"	18'-11"	18'-0"	22'-1"	20'-7"	19'-7"	18'-7"
	NI-60	21'-10"	20'-2"	19'-3"	18'-3"	22'-6"	20'-10"	19'-11"	18'-10"
	NI-80	23'-5"	21'-7"	20'-7"	19'-5"	24'-0"	22'-3"	21'-2"	20'-0"
	NI-90	23'-10"	22'-1"	21'-0"	19'-10"	24'-5"	22'-7"	21'-6"	20'-4"
16"	NI-60	23'-9"	22'-0"	21'-0"	19'-10"	24'-6"	22'-9"	21'-8"	20'-7"
	NI-80	25'-6"	23'-7"	22'-5"	21'-2"	26'-2"	24'-3"	23'-1"	21'-10"
	NI-90	26'-0"	24'-0"	22'-10"	21'-6"	26'-7"	24'-8"	23'-5"	22'-2"

Joist depth	Joist series	Mid-span blocking with 1x4 inch strap On centre spacing				Mid-span blocking and 1/2 in. gypsum ceiling On centre spacing			
		12"	16"	19.2"	24"	12"	16"	19.2"	24"
9-1/2"	NI-20	16'-10"	15'-5"	14'-6"	13'-5"	16'-10"	15'-5"	14'-6"	13'-5"
	NI-40x	18'-8"	17'-2"	16'-3"	14'-11"	18'-10"	17'-2"	16'-3"	14'-11"
	NI-60	18'-11"	17'-6"	16'-6"	15'-5"	19'-2"	17'-6"	16'-6"	15'-5"
	NI-80	20'-3"	18'-10"	17'-11"	16'-10"	20'-8"	19'-3"	18'-2"	16'-10"
11-7/8"	NI-20	20'-1"	18'-5"	17'-5"	16'-1"	20'-1"	18'-5"	17'-5"	16'-1"
	NI-40x	21'-10"	20'-4"	19'-0"	17'-0"	22'-5"	20'-6"	19'-0"	17'-0"
	NI-60	22'-1"	20'-7"	19'-8"	18'-4"	22'-8"	20'-10"	19'-8"	18'-4"
	NI-80	23'-8"	22'-0"	20'-11"	19'-10"	24'-1"	22'-6"	21'-6"	20'-0"
	NI-90	24'-1"	22'-5"	21'-4"	20'-2"	24'-7"	22'-11"	21'-10"	20'-7"
14"	NI-40x	24'-5"	22'-9"	20'-11"	18'-8"	25'-1"	22'-11"	20'-11"	18'-8"
	NI-60	24'-10"	23'-2"	22'-1"	20'-10"	25'-6"	23'-8"	22'-4"	20'-10"
	NI-80	26'-6"	24'-8"	23'-6"	22'-2"	27'-1"	25'-3"	24'-1"	22'-9"
	NI-90	27'-0"	25'-1"	23'-11"	22'-7"	27'-6"	25'-8"	24'-6"	23'-2"
16"	NI-60	27'-3"	25'-5"	24'-3"	22'-11"	28'-0"	26'-2"	24'-9"	23'-1"
	NI-80	29'-1"	27'-1"	25'-9"	24'-4"	29'-8"	27'-9"	26'-5"	25'-0"
	NI-90	29'-7"	27'-6"	26'-2"	24'-9"	30'-2"	28'-2"	26'-10"	25'-5"

Notes:

1. The tabulated clear spans are based on CSA O86-14 and NBC 2015, and are applicable to residential floor construction meeting the above design criteria.
2. For multiple-span applications, the end spans shall be 40% or more of the adjacent span.
3. Minimum bearing length shall be 1-3/4 inch for end bearings, and 3-1/2 inches for intermediate bearings.
4. Bearing stiffeners are not required when I-joists are used in accordance with this table, except as required for hangers.
5. Nordic I-joists are listed in CCMC Evaluation Report 13032-R and APA Product Report PR-L274C.

Maximum Floor Spans – M6.1

Design Criteria

Spans:	Simple span
Loads:	Live load = 40 psf and dead load = 20 psf
Deflection limits:	L/480 under live load and L/240 under total load
Sheathing:	5/8 in. nailed-glued Canadian softwood plywood

Maximum Floor Spans

Joist depth	Joist series	Bare On centre spacing				1/2 in. gypsum ceiling On centre spacing			
		12"	16"	19.2"	24"	12"	16"	19.2"	24"
9-1/2"	NI-20	14'-11"	14'-1"	13'-7"	-	15'-4"	14'-6"	14'-1"	-
	NI-40x	15'-11"	15'-0"	14'-6"	-	16'-4"	15'-5"	14'-11"	-
	NI-60	16'-1"	15'-2"	14'-8"	-	16'-6"	15'-7"	15'-1"	-
	NI-80	17'-1"	16'-1"	15'-6"	-	17'-5"	16'-5"	15'-10"	-
11-7/8"	NI-20	16'-9"	15'-10"	15'-4"	-	17'-4"	16'-4"	15'-10"	-
	NI-40x	17'-10"	16'-10"	16'-3"	-	18'-6"	17'-4"	16'-9"	-
	NI-60	18'-1"	17'-0"	16'-5"	-	18'-9"	17'-6"	16'-11"	-
	NI-80	19'-6"	18'-0"	17'-4"	-	20'-1"	18'-7"	17'-9"	-
	NI-90	19'-11"	18'-4"	17'-8"	-	20'-5"	18'-11"	18'-1"	-
14"	NI-40x	19'-10"	18'-4"	17'-8"	-	20'-6"	19'-1"	18'-3"	-
	NI-60	20'-2"	18'-8"	17'-11"	-	20'-10"	19'-4"	18'-6"	-
	NI-80	21'-8"	20'-0"	19'-1"	-	22'-4"	20'-8"	19'-9"	-
	NI-90	22'-1"	20'-5"	19'-6"	-	22'-9"	21'-0"	20'-1"	-
16"	NI-60	22'-0"	20'-4"	19'-6"	-	22'-9"	21'-1"	20'-2"	-
	NI-80	23'-7"	21'-10"	20'-10"	-	24'-4"	22'-6"	21'-6"	-
	NI-90	24'-1"	22'-2"	21'-2"	-	24'-9"	22'-11"	21'-10"	-

Joist depth	Joist series	Mid-span blocking with 1x4 inch strap On centre spacing				Mid-span blocking and 1/2 in. gypsum ceiling On centre spacing			
		12"	16"	19.2"	24"	12"	16"	19.2"	24"
9-1/2"	NI-20	16'-6"	15'-1"	14'-3"	-	16'-6"	15'-1"	14'-3"	-
	NI-40x	17'-9"	16'-10"	15'-11"	-	18'-2"	16'-11"	15'-11"	-
	NI-60	17'-11"	16'-11"	16'-2"	-	18'-5"	17'-2"	16'-2"	-
	NI-80	19'-3"	17'-10"	17'-3"	-	19'-8"	18'-3"	17'-7"	-
11-7/8"	NI-20	19'-4"	18'-0"	17'-1"	-	19'-9"	18'-1"	17'-1"	-
	NI-40x	20'-10"	19'-4"	18'-6"	-	21'-5"	19'-11"	19'-0"	-
	NI-60	21'-1"	19'-7"	18'-8"	-	21'-8"	20'-2"	19'-3"	-
	NI-80	22'-6"	20'-10"	19'-11"	-	23'-1"	21'-5"	20'-5"	-
	NI-90	23'-0"	21'-3"	20'-4"	-	23'-6"	21'-10"	20'-10"	-
14"	NI-40x	23'-5"	21'-8"	20'-9"	-	24'-0"	22'-5"	20'-11"	-
	NI-60	23'-9"	22'-0"	21'-0"	-	24'-5"	22'-8"	21'-8"	-
	NI-80	25'-4"	23'-6"	22'-5"	-	25'-11"	24'-1"	23'-0"	-
	NI-90	25'-10"	23'-11"	22'-9"	-	26'-5"	24'-6"	23'-4"	-
16"	NI-60	26'-2"	24'-3"	23'-2"	-	26'-11"	25'-0"	23'-11"	-
	NI-80	27'-11"	25'-10"	24'-7"	-	28'-7"	26'-6"	25'-3"	-
	NI-90	28'-5"	26'-3"	25'-0"	-	29'-0"	26'-11"	25'-8"	-

Notes:

1. The tabulated clear spans are based on CSA O86-14 and NBC 2015, and are applicable to residential floor construction meeting the above design criteria.
2. For multiple-span applications, the end spans shall be 40% or more of the adjacent span.
3. Minimum bearing length shall be 1-3/4 inch for end bearings, and 3-1/2 inches for intermediate bearings.
4. Bearing stiffeners are not required when I-joists are used in accordance with this table, except as required for hangers.
5. Nordic I-joists are listed in CCMC Evaluation Report 13032-R and APA Product Report PR-L274C.

Maximum Floor Spans – M7.1

Design Criteria

Spans:	Simple span
Loads:	Live load = 40 psf and dead load = 20 psf
Deflection limits:	L/480 under live load and L/240 under total load
Sheathing:	3/4 in. nailed-glued Canadian softwood plywood

Maximum Floor Spans

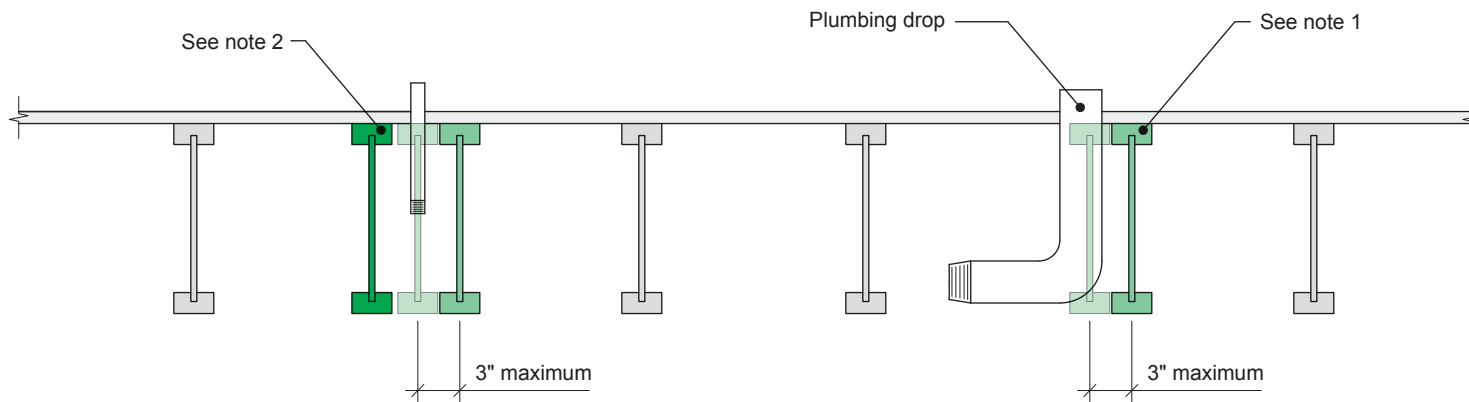
Joist depth	Joist series	Bare On centre spacing				1/2 in. gypsum ceiling On centre spacing			
		12"	16"	19.2"	24"	12"	16"	19.2"	24"
9-1/2"	NI-20	15'-10"	15'-0"	14'-5"	13'-5"	16'-4"	15'-5"	14'-6"	13'-5"
	NI-40x	16'-11"	15'-11"	15'-4"	14'-9"	17'-4"	16'-4"	15'-9"	14'-11"
	NI-60	17'-1"	16'-1"	15'-6"	14'-10"	17'-6"	16'-6"	15'-11"	15'-3"
	NI-80	18'-1"	17'-0"	16'-4"	15'-8"	18'-7"	17'-4"	16'-8"	16'-0"
11-7/8"	NI-20	17'-10"	16'-10"	16'-2"	15'-7"	18'-5"	17'-4"	16'-9"	16'-1"
	NI-40x	19'-3"	17'-10"	17'-2"	16'-6"	19'-10"	18'-5"	17'-8"	16'-11"
	NI-60	19'-6"	18'-1"	17'-4"	16'-8"	20'-1"	18'-8"	17'-10"	17'-1"
	NI-80	20'-11"	19'-4"	18'-5"	17'-7"	21'-5"	19'-10"	18'-11"	17'-11"
	NI-90	21'-4"	19'-9"	18'-9"	17'-10"	21'-10"	20'-3"	19'-3"	18'-3"
14"	NI-40x	21'-4"	19'-9"	18'-10"	17'-11"	22'-0"	20'-5"	19'-6"	18'-6"
	NI-60	21'-8"	20'-1"	19'-2"	18'-2"	22'-4"	20'-9"	19'-9"	18'-9"
	NI-80	23'-3"	21'-6"	20'-5"	19'-4"	23'-10"	22'-1"	21'-0"	19'-11"
	NI-90	23'-9"	21'-11"	20'-10"	19'-8"	24'-3"	22'-6"	21'-5"	20'-3"
16"	NI-60	23'-7"	21'-10"	20'-10"	19'-9"	24'-4"	22'-7"	21'-7"	20'-5"
	NI-80	25'-4"	23'-5"	22'-3"	21'-1"	26'-0"	24'-1"	22'-11"	21'-8"
	NI-90	25'-10"	23'-10"	22'-8"	21'-5"	26'-5"	24'-6"	23'-4"	22'-0"

Joist depth	Joist series	Mid-span blocking with 1x4 inch strap On centre spacing				Mid-span blocking and 1/2 in. gypsum ceiling On centre spacing			
		12"	16"	19.2"	24"	12"	16"	19.2"	24"
9-1/2"	NI-20	16'-10"	15'-5"	14'-6"	13'-5"	16'-10"	15'-5"	14'-6"	13'-5"
	NI-40x	18'-7"	17'-2"	16'-3"	14'-11"	18'-10"	17'-2"	16'-3"	14'-11"
	NI-60	18'-10"	17'-6"	16'-6"	15'-5"	19'-1"	17'-6"	16'-6"	15'-5"
	NI-80	20'-2"	18'-9"	17'-11"	16'-10"	20'-7"	19'-2"	18'-2"	16'-10"
11-7/8"	NI-20	20'-1"	18'-5"	17'-5"	16'-1"	20'-1"	18'-5"	17'-5"	16'-1"
	NI-40x	21'-9"	20'-3"	19'-0"	17'-0"	22'-4"	20'-5"	19'-0"	17'-0"
	NI-60	22'-0"	20'-6"	19'-7"	18'-4"	22'-7"	20'-10"	19'-8"	18'-4"
	NI-80	23'-6"	21'-10"	20'-10"	19'-9"	24'-0"	22'-5"	21'-4"	20'-0"
	NI-90	24'-0"	22'-4"	21'-3"	20'-1"	24'-6"	22'-10"	21'-9"	20'-7"
14"	NI-40x	24'-4"	22'-8"	20'-11"	18'-8"	25'-0"	22'-11"	20'-11"	18'-8"
	NI-60	24'-9"	23'-0"	22'-0"	20'-9"	25'-5"	23'-8"	22'-4"	20'-10"
	NI-80	26'-5"	24'-6"	23'-4"	22'-1"	27'-0"	25'-2"	24'-0"	22'-8"
	NI-90	26'-11"	25'-0"	23'-10"	22'-6"	27'-5"	25'-7"	24'-5"	23'-1"
16"	NI-60	27'-2"	25'-4"	24'-2"	22'-10"	27'-11"	26'-1"	24'-9"	23'-1"
	NI-80	29'-0"	26'-11"	25'-8"	24'-3"	29'-7"	27'-7"	26'-4"	24'-11"
	NI-90	29'-6"	27'-5"	26'-1"	24'-8"	30'-1"	28'-1"	26'-9"	25'-4"

Notes:

1. The tabulated clear spans are based on CSA O86-14 and NBC 2015, and are applicable to residential floor construction meeting the above design criteria.
2. For multiple-span applications, the end spans shall be 40% or more of the adjacent span.
3. Minimum bearing length shall be 1-3/4 inch for end bearings, and 3-1/2 inches for intermediate bearings.
4. Bearing stiffeners are not required when I-joists are used in accordance with this table, except as required for hangers.
5. Nordic I-joists are listed in CCMC Evaluation Report 13032-R and APA Product Report PR-L274C.

7c

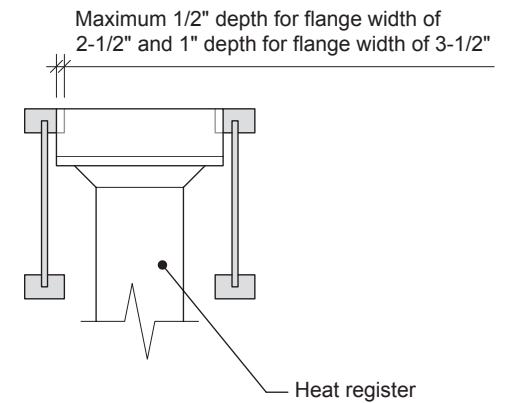
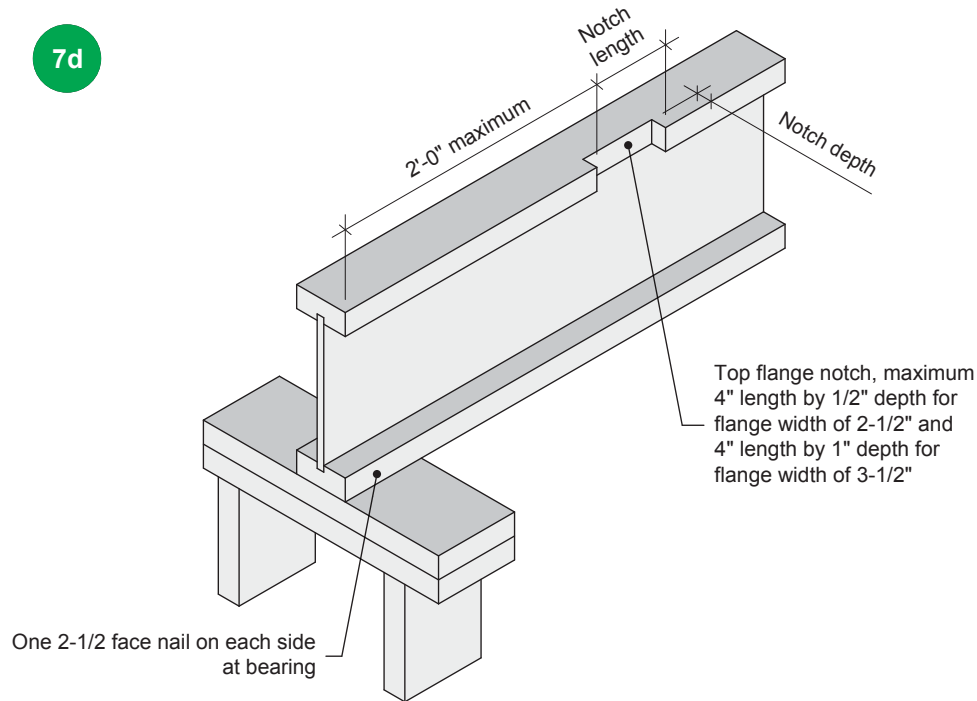


Notes:

1. To prevent interference with plumbing, a joist may be shifted up to 3 inches if the edge of the floor panel is supported and the span rating is not exceeded.
2. In all other cases, an additional joist is required.

All nails shown in the details are assumed to be common nails unless otherwise noted. Nails shall have a diameter not less than 0.128 inch for 2-1/2-inch nails, or 0.144 inch for 3-inch nails. Individual components not shown to scale for clarity.

7d



Notes:

1. Blocking required at bearing for lateral support, not shown for clarity.
2. The maximum dimensions for a notch on the side of the top flange are 4-inch length by 1/2-inch depth for flange width of 2-1/2 inches, and 4-inch length by 1-inch depth for flange width of 3-1/2 inches.
3. This detail applies to simple-span joists and multiple-span joists where the notch is located at the end half-span.
4. For other applications, contact Nordic Structures.

All nails shown in the details are assumed to be common nails unless otherwise noted. Nails shall have a diameter not less than 0.128 inch for 2-1/2-inch nails, or 0.144 inch for 3-inch nails. Individual components not shown to scale for clarity.