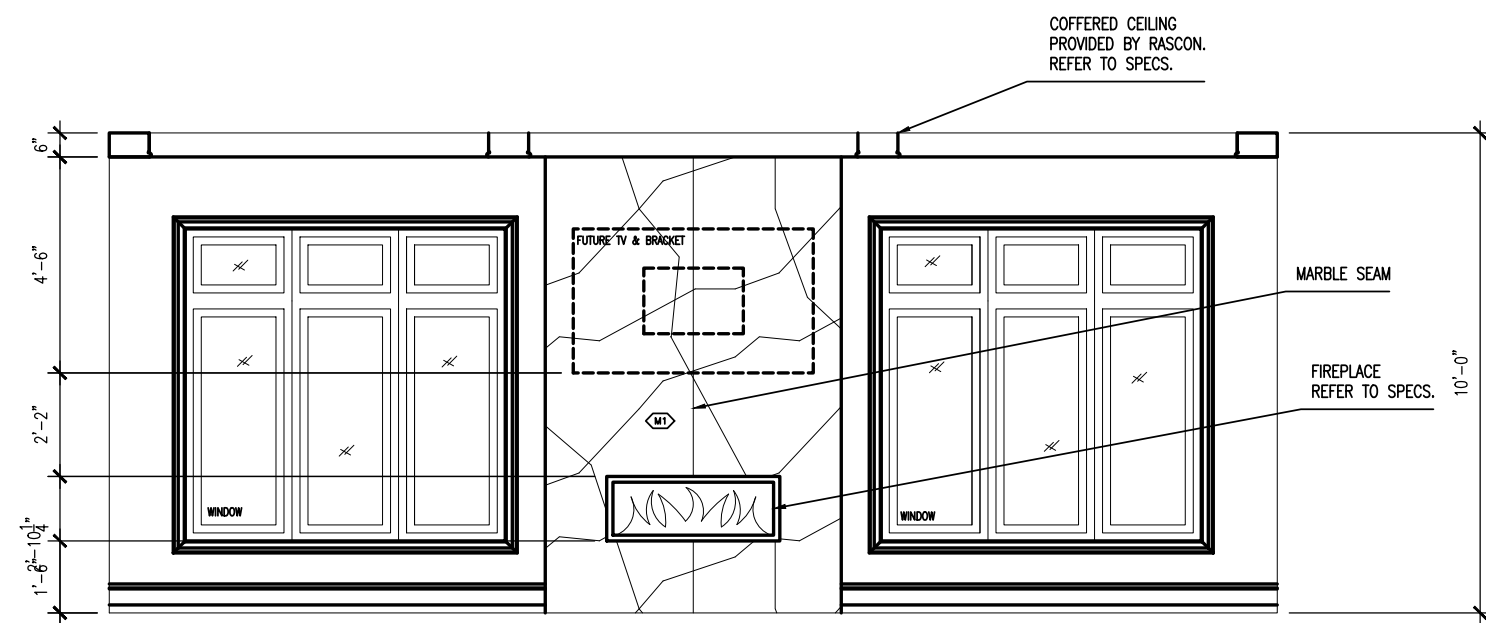
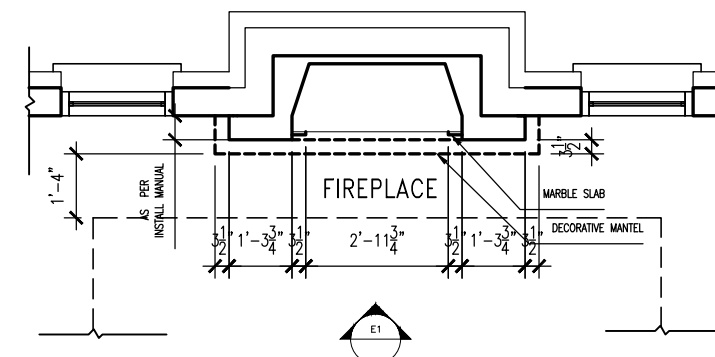


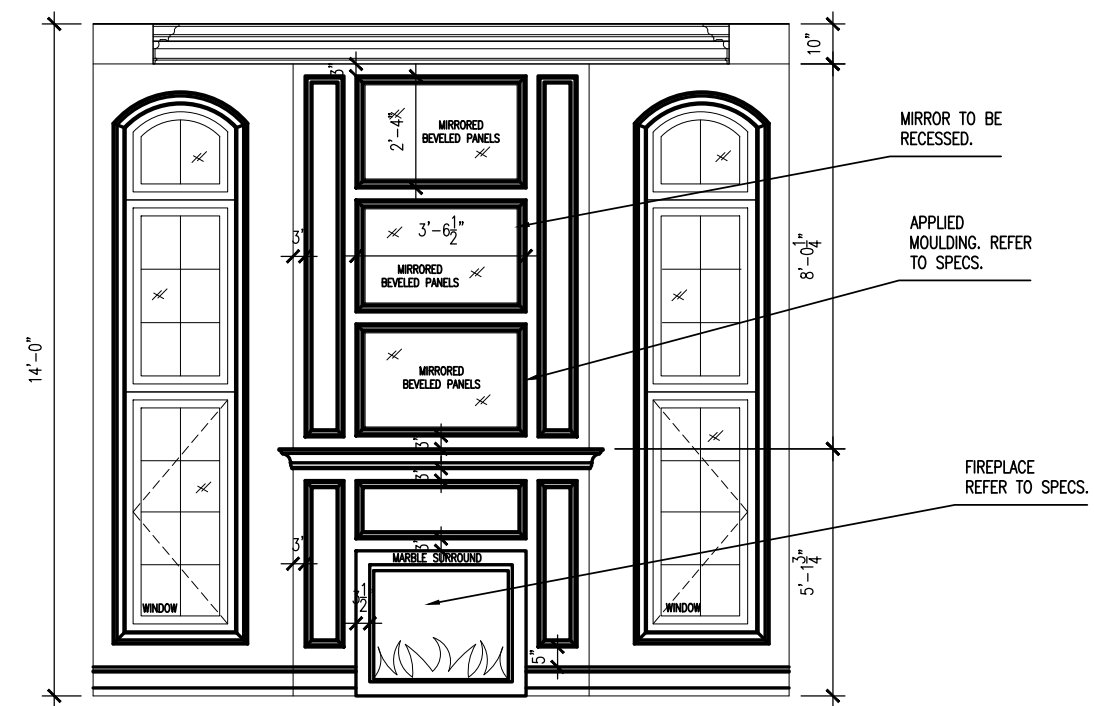
P1 FAMILY ROOM
ID1.5 1/4"=1'-0"



E1 FAMILY ROOM: ELEVATION
ID1.5 1/4"=1'-0"



P2 LIVING ROOM
ID1.5 1/4"=1'-0"



E1 LIVING ROOM: ELEVATION
ID1.5 1/4"=1'-0"

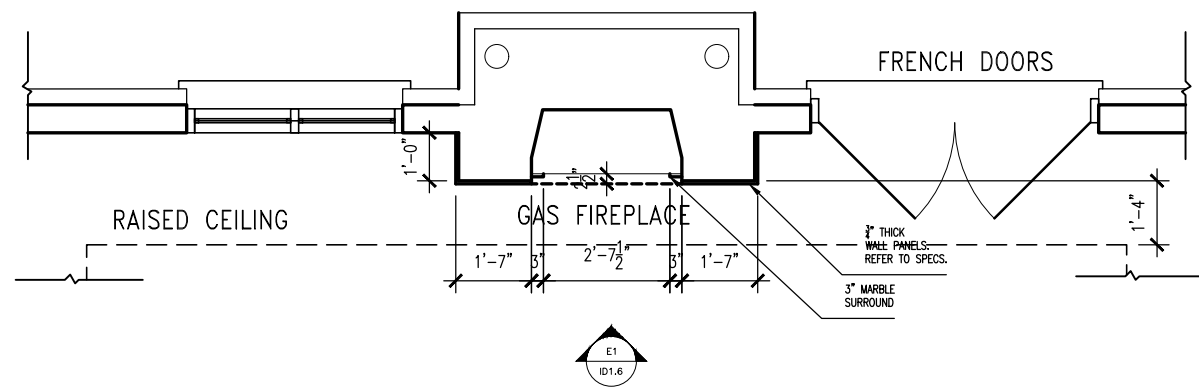
Contractor shall check all dimensions and elevations before commencing with work and report any discrepancies to the designer. Prints are not to be scaled.

Greenpark.

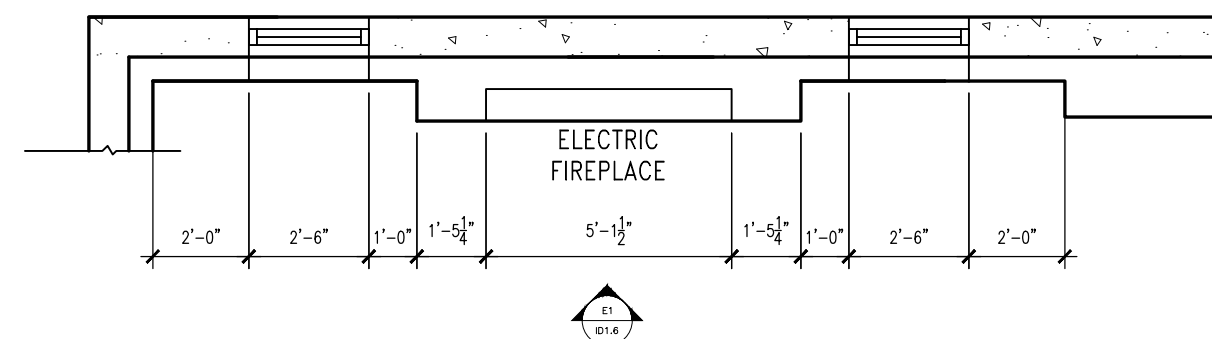
5.		
4.		
3.		
2.		
1.		
#:	DATE:	DESCRIPTION:

REVISIONS	
PROJECT NAME:	
CARLO B. (GREENYORK)	
LOT:	18 DENHAM
BY:	J.CELLI
DATE:	12AUG20
SCALE:	AS NOTED
SHEET TITLE:	
FIREPLACE ELEVATIONS	

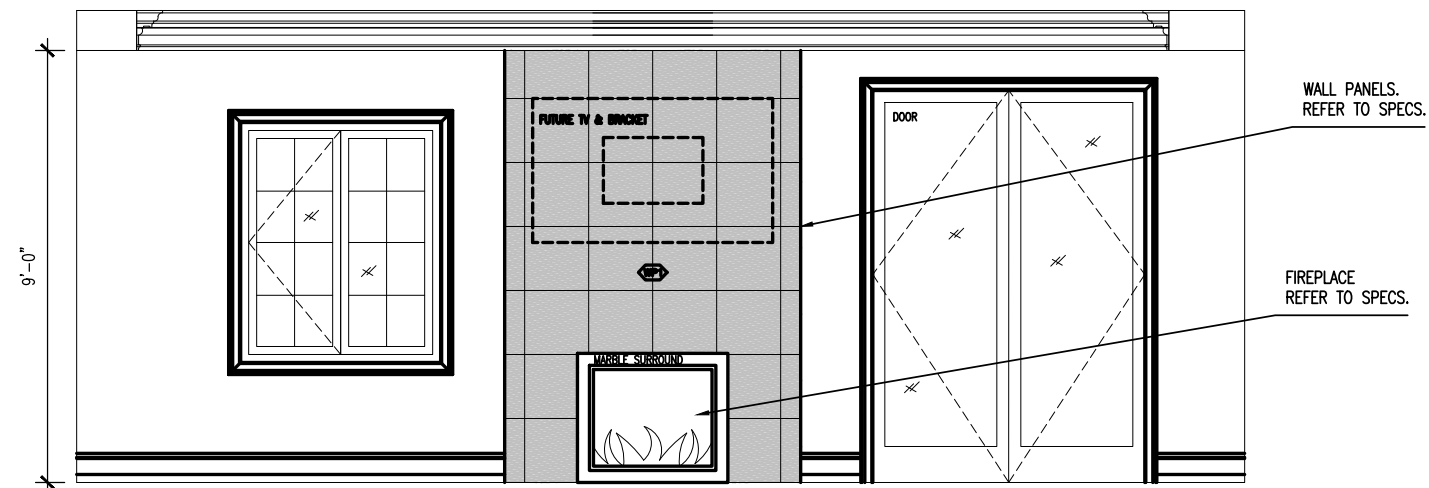
SHEET NUMBER:
ID1.5



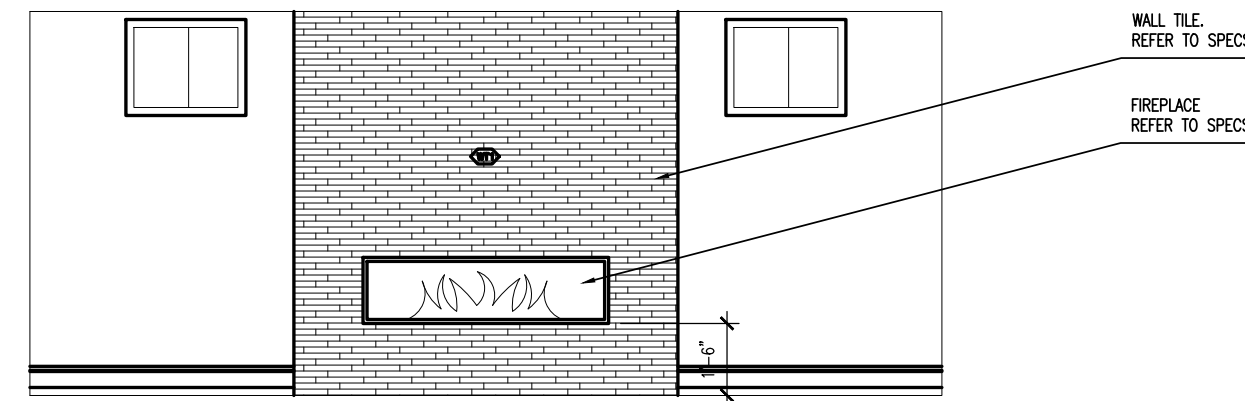
P3 MASTER BEDROOM
ID1.6 1/4"=1'-0"



P3 BASEMENT: REC. ROOM FIREPLACE
ID1.6 1/4"=1'-0"



E1 MASTER BEDROOM: ELEVATION
ID1.6 1/4"=1'-0"



E1 BASEMENT: REC. ROOM ELEVATION
ID1.6 1/4"=1'-0"

Contractor shall check all dimensions and elevations before commencing with work and report any discrepancies to the designer. Prints are not to be scaled.



5.		
4.		
3.		
2.		
1.		
#:	DATE:	DESCRIPTION:

REVISIONS	
PROJECT NAME:	
CARLO B. (GREENYORK)	
LOT:	18 DENHAM
BY:	J.CELLI
DATE:	12AUG20
SCALE:	AS NOTED
SHEET TITLE:	
FIREPLACE ELEVATIONS	

SHEET NUMBER:
ID1.6

GREENYORK HOMES	DATE: JULY 24 TH 2020
PROJECT: 18 DENHAM, RICHMOND HILL (CARLO B.)	REVISED: AUGUST 25 TH 2020 REVISED: 14SEPT20
MODEL: AVIGNON 3	REVISED: 25SEP20
SQ FOOTAGE: 8,505 SQ FT.	SITE SUPER: MIKE B (647) 212 2344

DETAILS SCHEDULE					
EXTERIOR					
LOCATION	REFERENCE	LEGEND	SPECIFICATIONS	SUPPLIER	NOTES
LANAI	1 ST FLOOR PLAN	N/A	FIREPLACE: AMANTII BI-50-DEEP ELECTRIC	MONTWEST	LANAI
1ST FLOOR					
LOCATION	REFERENCE	LEGEND	SPECIFICATIONS	SUPPLIER	NOTES
FAMILY ROOM	P1/SHEET ID.1.5	M1	VIRGINIA (Q) SLAB	MAJESTIC MARBLE	
			FIREPLACE: MARQUIS INFINITE 5143 MQRB5143	MONTWEST	
BAR & SERVERY (BESIDE DINING)	E15/SHEET ID1.3	M1	CALCATTI SM (Q)	MAJESTIC MARBLE	
LIVING ROOM	P2/SHEET ID1.5	NOTED	MIRROR INSERTS (x3) BEVELED EDGE	GLASS SHOWERS & MORE	
	E1/SHEET ID1.5	NOTED	MARBLE SURROUND VIRGINIA (Q) SLAB	MAJESTIC MARBLE	
			WALL PANELING -M327	VIA TRIM & DOORS	
			FIREPLACE: MARQUIS BENTLEY 42" ZCV42	MONTWEST	

CONTACT: JACK CELLI OFFICE: (4) 661 5329 CELL: (4) 737 6901 EMAIL: JCELLI@GREENPARK.COM	FOR ANY CONCERNS REGARDING THIS COLOUR CHART, PLEASE CONTACT DESIGN TEAM.
ASSISTANT CONTACT: ALEXANDRA AVERSA OFFICE: (4) 661 5329 CELL: (6) 338 9456 EMAIL: AAVERSA@GREENPARK.COM	

GREENYORK HOMES	DATE: JULY 24 TH 2020
PROJECT: 18 DENHAM, RICHMOND HILL (CARLO B.)	REVISED: AUGUST 25 TH 2020 REVISED: 14SEPT20
MODEL: AVIGNON 3	REVISED: 25SEP20
SQ FOOTAGE: 8,505 SQ FT.	SITE SUPER: MIKE B (647) 212 2344

DETAILS SCHEDULE					
2 ND FLOOR					
LOCATION	REFERENCE	LEGEND	SPECIFICATIONS	SUPPLIER	NOTES
MASTER BEDROOM	P3/SHEET ID.1.6	WP1	LACUNO ART LA-16 24” SQ	RASCON INC.	
		N/A	FIREPLACE: MARQUIS BENTLEY 42” ZCV42	MONTWEST	
BASEMENT					
BASEMENT	P4/SHEET ID.1.6	WT1	RON CUBICS COLOUR: WHITE 6”X24”	PREMIER CERAMICS	
		N/A	FIREPLACE: DIMPLEX IGNITE XL 60” LINEAR ELECTRIC FIREPLACE	MONTWEST	

CONTACT: JACK CELLI OFFICE: (4) 661 5329 CELL: (4) 737 6901 EMAIL: JCELLI@GREENPARK.COM	FOR ANY CONCERNS REGARDING THIS COLOUR CHART, PLEASE CONTACT DESIGN TEAM.
ASSISTANT CONTACT: ALEXANDRA AVERSA OFFICE: (4) 661 5329 CELL: (6) 338 9456 EMAIL: AAVERSA@GREENPARK.COM	

GREENYORK HOMES	DATE: JULY 24 TH 2020
PROJECT: 18 DENHAM, RICHMOND HILL (CARLO B.)	REVISED: AUGUST 25 TH 2020 REVISED: 14SEPT20
MODEL: AVIGNON 3	REVISED: 25SEP20
SQ FOOTAGE: 8,505 SQ FT.	SITE SUPER: MIKE B (647) 212 2344

GENERAL NOTES:

1.0 SHOP DRAWINGS

- 1.1 REFER TO SUB-CONTRACTOR SHOP DRAWINGS, IF REQUIRED.
- 1.2 CONTRACTOR TO REVIEW ALL SHOP DRAWINGS PRIOR TO COMPENCEMENT OF WORK.

2.0 SPECIFICATIONS

- 2.1 REFER TO FIREPLACE SPECIFICATIONS.
- 2.2 REFER TO PRODUCT SPECIFICATIONS.

CONTACT: JACK CELLI OFFICE: (4) 661 5329 CELL: (4) 737 6901 EMAIL: JCELLI@GREENPARK.COM	FOR ANY CONCERNS REGARDING THIS COLOUR CHART, PLEASE CONTACT DESIGN TEAM.
ASSISTANT CONTACT: ALEXANDRA AVERSA OFFICE: (4) 661 5329 CELL: (6) 338 9456 EMAIL: AAVERSA@GREENPARK.COM	

Unit Illustrated: MQRB4436N Infinite Linear Direct Vent Fireplace (Natural Gas), MQRB44BK Back Shield Kit (Single-Sided Viewing), MQRB4436PLB Porcelain Liner Back, MQRB5143PLE Porcelain Liner Ends.



INFINITE

ZERO CLEARANCE DIRECT VENT GAS FIREPLACE

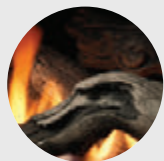
 marquis
COLLECTION

Model	MQRB4436N/NE MQRB4436NE2	MQRB4436LP/LPE MQRB4436LPE2	MQRB5143N/NE MQRB5143NE2	MQRB5143LP/LPE MQRB5143LPE2	MQRB6961N MQRB6961NE2	MQRB6961LP MQRB6961LPE2
Fuel	Natural	Propane	Natural	Propane	Natural	Propane
Milivolt	Yes	Yes	Yes	Yes	Yes	Yes
Input Max.	31,500 BTU	31,000 BTU	38,500 BTU	38,000 BTU	59,000 BTU	58,500 BTU
Input Min.	22,500 BTU	23,000 BTU	22,500 BTU	29,500 BTU	42,500 BTU	46,000 BTU
Glass Window	Ceramic	Ceramic	Ceramic	Ceramic	Ceramic	Ceramic
Glass Size	35" W x 15 1/4" H		42" W x 15 1/4" H		60" W x 15 1/4" H	
Venting	5"/7" Kingsman Flex Vent		5"/7" Kingsman Flex Vent / 5"/8" Hard Pipe*		7"/10" Kingsman Flex Vent	
FE (P.41-15)	53.19% / 54.87%	53.19% / 54.87%	58.71% / 59.94%	58.71% / 59.94%	52.42% / 53.21	52.42% / 53.21%

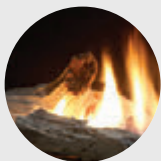
*With Adapter.

ACCESSORY OPTIONS

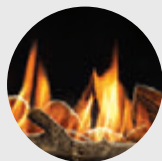
LOG SETS



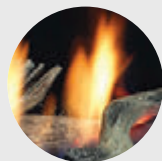
MQ46D
3-Piece Large
Driftwood Set
(5143/6961
Models only)



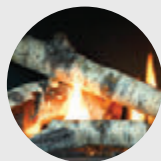
MQRBD1
4-Piece
Driftwood
Set with
4 Rocks



MQRBD2
3-Piece
Driftwood
Log Set

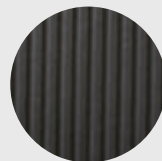


MQRBD3
(5-Piece) or
MQRBD4
(3-Piece)
Driftwood Set

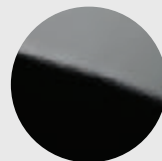


MQBRW
Birch

LINERS



Fluted Liner
(Single-Sided
Models only)



Porcelain
Reflective
Liner

MEDIA OPTIONS



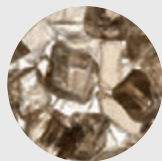
MQG5ZG
Zircon Glacier
Ice Glass



MQG5A
Cobalt
Ember Glass



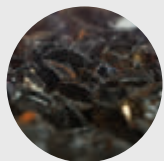
MQG5B
Black
Ember Glass



MQG5C
Bronze
Ember Glass



MQG5W
White
Ember Glass



MQEMBER
Ember
Chunks



MQSTONE
Decorative
Stones



MQROCK2
Natural
Rock Set



MQROCK3
Multi-Colored
Rock Set



RBCB1
Multi-Colored
Cannonballs

THERMOSTATS

Wall Mount Thermostat or
Programmable Thermostat



REMOTE CONTROLS

(Millivolt or IPI PF1) – On/Off,
Thermostat, Modulating



PF2



PF1
OR MV



GFRC

STANDARD FEATURES

- SIT Valve with Hi/Lo Flame and BTU adjustment
- Accent Lighting with Decorative Glass (White) Ember Bed
- Proflame II Models include Remote Control – Features flame, thermostat, smart thermostat, accent lighting (MQRB4436NE2, MQRB4436LPE2, MQRB5143NE2, MQRB5143LPE2, MQRB6961NE2 and MQRB6961LPE2 Models only)

OPTIONAL FEATURES

Choose Your View: Single-Sided or See-Through for your viewing pleasure

Choose Surround Trim Kit: Black or Stainless; Available in two sizes – Frame and Edge

Liner: Porcelain Reflective or Fluted

Media Options: Contemporary Rocks, Decorative Stones, Decorative Ember Glass (Glacier Ice, Cobalt Blue, Black, Bronze, White), Ember Chunks or Multi-Colored Cannonballs

Log Sets: 4 Piece Driftwood Set with 4 Rocks, 3 or 5 Piece Driftwood Set, 3 Piece Large Driftwood Set (5143/6961 Models only), or Birch Set.

Fan Kit: Heat activated with variable speed control (for Single-Sided Installation only)

TOP FLUE MODEL	Height		Front Width		Depth	
	Actual	Framing	Actual	Framing	Actual	Framing
Infinite – MQRB4436						
Single-Sided	37 5/8"	38"	46"	46 1/2"	16 1/2"	17"
See-Through	37 5/8"	38"	46"	46 1/2"	16 1/2"	15 3/8"
Infinite – MQRB5143						
Single-Sided	37 5/8"	38"	53"	53 1/2"	16 1/2"	17"
See-Through	37 5/8"	38"	53"	53 1/2"	16 1/2"	15 3/8"
Grand Infinite – MQRB6961						
Single-Sided	45 3/8"	45 1/2"	69 1/8"	71 1/2"	20 1/2"	21"
See-Through	45 3/8"	45 1/2"	69 1/8"	571 1/2"	20 1/2"	19 3/8"

* dependant of finishing material used.

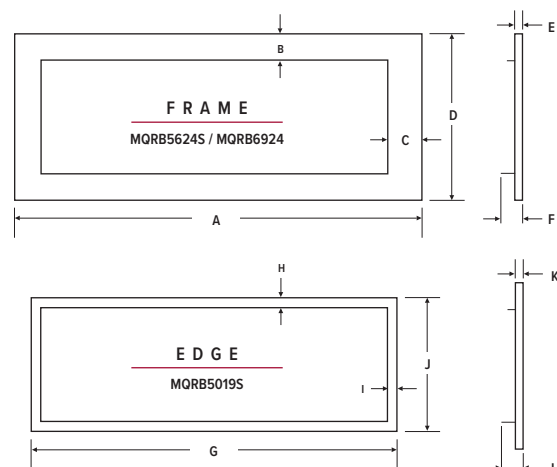
INFINITE Possibilities

A fabulously sleek stretch of dancing flames delivers infinite possibilities in this modern zero clearance gas fireplace by Marquis.

Visit www.marquisfireplaces.net to see the latest evolution in fireplaces.

Unit Illustrated: MQRB6961N Linear Multi-sided Direct Vent Fireplace (Natural Gas), MQRB69BK Back Shield Kit (for Single-Sided Viewing), MQRBD2 Driftwood Branches (3 Piece Set), MQROCK3 Rock Set (Contemporary Collection – Multi-Colored), MQEMBER Ember Chunks x2.

WALL SURROUND TRIM KIT



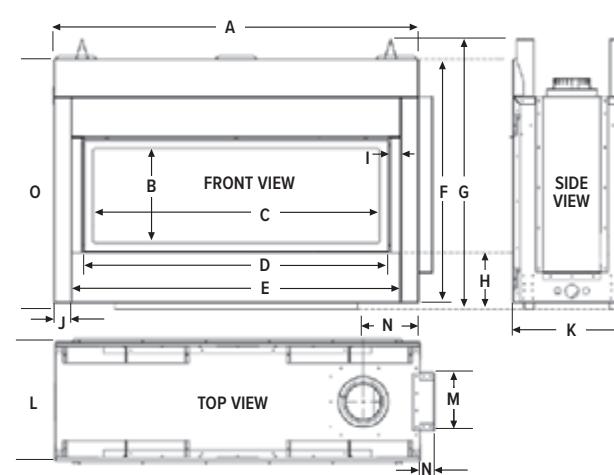
WALL SURROUND TRIM KIT DIMENSIONS

	MQRB4436	MQRB5143	MQRB6961
A	49 7/8"	56 7/8"	74 7/8"
B	3 7/8"	3 7/8"	3 7/8"
C	4 3/8"	4 3/8"	4 3/8"
D	23 3/4"	23 3/4"	23 3/4"
E	1"	1"	1"
F	2 3/8"	2 3/8"	2 3/8"

WALL SURROUND TRIM KIT DIMENSIONS

	MQRB4436	MQRB5143	MQRB6961
G	44 1/8"	51 1/8"	69 1/8"
H	1 1/2"	1 1/2"	1 1/2"
I	1 1/2"	1 1/2"	1 1/2"
J	19 1/8"	19 1/8"	19 1/8"
K	1"	1"	1"
L	2 3/8"	2 3/8"	2 3/8"

PRODUCT DIMENSIONS



PRODUCT DIMENSIONS

	MQRB4436	MQRB5143	MQRB6961
A	44 1/8"	51 1/8"	69 1/8"
B	13 1/4"	13 1/4"	13 1/4"
C	33 1/8"	40 1/8"	58 1/8"
D	36 1/4"	43 1/4"	61 1/4"
E	39"	46"	64 1/8"
F	34"	34"	38"
G	37 5/8"	37 5/8"	45 3/8"
H	7 7/8"	7 7/8"	7 7/8"
I	1 1/2"	1 1/2"	1 1/2"
J	2 1/2"	2 1/2"	2 1/2"
K	16 1/2"	16 1/2"	20 1/2"
L	16 1/2"	16 1/2"	20 1/2"
M	8 1/8"	8 1/8"	12 1/8"
N	2"	2"	2 7/8"
O	35"	35"	39"



Unit Illustrated: MQRB5143N Infinite Linear Direct Vent Fireplace (Natural Gas), MQRB51BK Single Side Kit, MQRB5143PLB Porcelain Back, MQRB5143PLE Porcelain Liner Ends, MQRB5019SB Surround Trim (Edge Black), MQRBRW Birch Log Set, MQSTONE10 Decorative Stones.



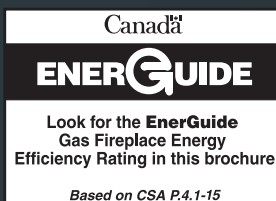
Unit Illustrated: MQRB5143N Infinite Linear Direct Vent Fireplace (Natural Gas), MQRB51SK See-Through Kit, MQRB5143PLE Porcelain Liner Ends, MQRB5019SSS Surround Trim (Edge Stainless Steel), MQG5A Glass Media Cobalt Blue.



Marquis Fireplaces maintains a program of continuous testing, refinement and improvements of all its products. Some aspect of units shown here may be changed at any time without notice or obligation.

Certification: ANSI Z21.88-2017 • CSA 2.33-2017, CSA 2.17-2017 Vented Gas Fireplace Heater.

Note: Components may have to be ordered separately to create a complete unit. Discuss with your local Marquis Dealer for clarification.



FOR CALIFORNIA RESIDENTS ONLY:
WARNING! This product can expose you to chemicals including Carbon Monoxide, that is an externally vented by-product of fuel consumption, which is [are] known to the State of California to cause birth defects or other reproductive harm. For more information, visit www.P65Warnings.ca.gov.

Crafted entirely in Canada, each Marquis fireplace is built to the highest standards and made to last.

LIMITED LIFETIME WARRANTY



2340 Logan Avenue
Winnipeg, Manitoba, CAN
R2R 2V3
Phone: 204.632.1962
Fax: 204.632.1960
marquisfireplaces.net

Printed in Canada
B066 - 06/2020

Installation Instructions

Model Numbers: MQRB4436N, MQRB4436NE, MQRB4436NE2, MQRB4436LP, MQRB4436LPE, MQRB4436LPE2
MQRB5143N, MQRB5143NE, MQRB5143NE2, MQRB5143LP, MQRB5143LPE, MQRB5143LPE2
MQRB6961N, MQRB6961NE, MQRB6961NE2, MQRB6961LP, MQRB6961LPE, MQRB6961LPE2

Certified to: ANSI Z21.88-2017 • CSA 2.33-2017 Vented Gas Fireplace Heaters, CSA 2.17-2017

ZERO CLEARANCE VENTED GAS FIREPLACE



WARNING:

FIRE OR EXPLOSION HAZARD

Failure to follow safety warnings exactly could result in serious injury, death, or property damage.

- Do not store or use gasoline or other flammable vapors and liquids in the vicinity of this or any other appliance.
- WHAT TO DO IF YOU SMELL GAS
 - Do not try to light any appliance.
 - Do not touch any electrical switch; do not use any phone in your building.
 - Leave the building immediately.
 - Immediately call your gas supplier from a neighbor's phone. Follow the gas supplier's instructions.
 - If you cannot reach your gas supplier, call the fire department.
- Installation and service must be performed by a qualified installer, service agency or the gas supplier.

INSTALLER: Leave this manual with the appliance.
CONSUMER: Retain this manual for future reference.

⚠ WARNING: If the information in these instructions is not followed exactly, a fire or explosion may result causing property damage, personal injury or loss of life.

VENTED GAS FIREPLACE HEATER:
NOT FOR USE WITH SOLID FUEL.



DANGER



**HOT GLASS WILL
CAUSE BURNS.**

**DO NOT TOUCH GLASS
UNTIL COOLED.**

**NEVER ALLOW CHILDREN
TO TOUCH GLASS.**

A barrier designed to reduce the risk of burns from the hot viewing glass is provided with this appliance and shall be installed for the protection of children and other at-risk individuals.

If the barrier becomes damaged, the barrier shall be replaced with the manufacturer's barrier for this appliance.

 **marquis**
COLLECTION by Kingsman



A Division of R-Co. Inc.
2340 Logan Ave.
Winnipeg, Manitoba Canada
R2R 2V3 Ph.: (204) 632-1962
Printed in Canada September 6, 2019
Part# 51MQ-MAN17

Table of Contents

Table of Contents.....	2-3
Child Safety Screen –Installation.....	4
Child Safety Screen – Removal.....	5
Recommendations for Finishing of Clean View Linear Products.....	6
Pre-installation Questions and Answers / Operating Instructions.....	7
Warnings, Installations and Operations.....	8
Installation Requirements for the Commonwealth of Massachusetts / Carbon Monoxide (CO) Detector.....	9
Fireplace Installations in Covered Outdoor Locations.....	10
Nailing Tab Guide for all Units	11
MQRB4436	
MQRB4436: Framing Your Gas Fireplace.....	12
MQRB4436 Locating Your Appliance / Fireplace Dimensions.....	13
MQRB4436 - Pre-existing Enclosures vs Framing Enclosure Around Fireplace.....	14
MQRB4436 -See Thru Framing.....	15-16
MQRB4436 Single Sided Framing.....	17-18
MQRB4436 Combustible Enclosure Heights.....	19
MQRB4436 Surround Dimensions / Surround Clearances.....	20
MQRB4436 Facing Material Requirements.....	21
MQRB4436 Mantel Clearances / Clearance to Combustibles.....	22
MQRB5143	
MQRB5143: Framing Your Gas Fireplace.....	23
MQRB5143 Locating Your Appliance / Fireplace Dimensions.....	24
MQRB5143 - Pre-existing Enclosures vs Framing Enclosure Around Fireplace.....	25
MQRB5143 -See Thru Framing.....	26-27
MQRB5143 Single Sided Framing.....	28-29
MQRB5143 Combustible Enclosure Heights.....	30
MQRB5143 Surround Dimensions / Surround Clearances.....	31
MQRB5143 Facing Material Requirements.....	32
MQRB5143 Mantel Clearances / Clearance to Combustibles.....	33
MQRB6961	
MQRB6961: Framing Your Gas Fireplace.....	34
MQRB6961 Locating Your Appliance / Fireplace Dimensions.....	35
MQRB6961 - Pre-existing Enclosures vs Framing Enclosure Around Fireplace.....	36
MQRB6961 -See Thru Framing.....	37-38
MQRB6961 Single Sided Framing.....	39-40
MQRB6961 Combustible Enclosure Heights.....	41
MQRB6961 Surround Dimensions / Surround Clearances.....	42
MQRB6961 Facing Material Requirements.....	43
MQRB6961 Mantel Clearances / Clearance to Combustibles.....	44
Kits and Accessories	
BK Kit Installation MQRB4436BK / MQRB5143BK / MQRB6961BK–Single View.....	45-46
BK Liner Installation.....	47
SK Kit Installation MQRB4436 / MQRB5143SK / MQRB6961SK -See Thru.....	48
SK Liner Installation.....	49
MQRB44RLF / MQRB51RLF / MQRB69RLF Fluted Liners.....	50
MQRB4436, MQRB5143 & MQRB6961 Finishing Options.....	51
MQRB4436 / MQRB5143 / MQRB6961 Surround Installation.....	52
Fan Installation MQRB4436 / MQRB5143 / MQRB6961.....	53
Fan Speed Control Outside of Fireplace.....	54
Optional Glass Ember Installation.....	55
Optional Driftwood & Rock Installation.....	56
MQ46D Driftwood / RCB1 Cannonballs.....	57
MQRBD3 Driftwood Log Set (5pcs).....	58
General Installation, Use, and Maintenance	
Door and Glass Information.....	59
Door Latch Tool.....	60

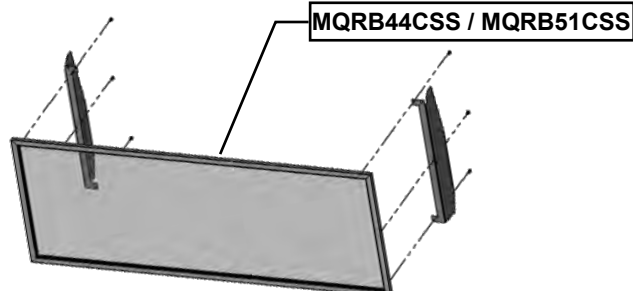
Valve Access Cover Removal / Removable Lower Face Panel.....	61
Gas Line Installation / Gas Specifications.....	62
Millivolt System, Lighting, and Burner Control.....	63
Troubleshooting the Millivolt Gas Control System.....	64
Annual Inspection List for Determining Safe Operation of a Direct Vent Gas Fireplace.....	65
Burner System Maintenance.....	66
Gas Conversion for Top Convertible Pilot.....	67
820 Nova mV Modulating Conversion Kit.....	68
MQRB4436 Burner Section: Gas Conversion.....	69
MQRB5143 Burner Section: Gas Conversion.....	70
MQRB4436 / MQRB5143 Burner Tube Removal / Burner System Removal/Installation Guide.....	71
MQRB4436 / 5143 / 6961 Moving Valve to Other Side of Fireplace.....	72
MQRB6961 Burner Section: Gas Conversion.....	73
MQRB6961 Burner Tube Removal / Burner System Removal/Installation Guide.....	74
LK2 Halogen Lamp Kit.....	75
LK3 Halogen Lamp Kit.....	76
Remote Receiver Location.....	77
UHS Box / Component Locations.....	78
Proflame 1 IPI Section	
IPI Electronic Ignition System.....	79
Remote Control Operation.....	80
IPI Electronic Ignition Parts List – Standard System.....	81
IPI Schematic Drawing #1: Basic Manual Hi / Lo – Manual On / Off.....	82
Configuration #2: Remote ON/OFF and Manual HI/LO Capabilities.....	83
Operating the Receiver Without Batteries For GT / EGT / GTM / EGTM Remote Controls.....	84
Configuration #3: Remote ON/OFF, variable HI/LO, and fan capabilities.....	85
Electronic Ignition Lighting Instructions.....	86
Proflame 2 IPI System	
Proflame 2 IPI System Parts List.....	87
Proflame 2 IFC Module and Remote Control.....	88
Cold Climates – CPI Setting - Proflame 2 Remote Control.....	89
Proflame 2 Remote Control.....	90-91
Proflame 2 Label Diagram.....	92
Venting	
Vent Terminal Clearances.....	93
General Vent Installation Information.....	94-95
Horizontal Vent Table.....	96
Venting Examples / Wall Thimble and Roof Support.....	97
Installation of Side Wall Venting.....	98
Z57ST24 / Z57ST36 Horizontal Snorkel Terminations MQRB4436 / MQRB5143.....	99
Venting Straight Up Through Roof.....	100-101
Flue Restrictor Adjustment MQRB4436 & MQRB5143.....	102
Approved for PVH58 / PVH58FM Power Vent.....	103
Power Vent Control Module Installation.....	104
Parts Lists	
PVH58 / PVH58FM Parts List.....	105-106
MQRB4436 -Parts List.....	107-108
MQRB5143 -Parts List.....	109-110
MQRB6961 -Parts List.....	111-112
Common Parts for MQRB4436, MQRB5143 and MQRB6961.....	113-114
Glass Safety / Termination Cap Safety –All Units-.....	115
Limited Lifetime Warranty.....	116

MQRB44CSS / MQRB51CSS**Contents of Kit:**

- [1] Child Safety Screen
- [2] Screen Mount Brackets
- [6] 3/8" x 1/2" Screws

Assembly Instructions:

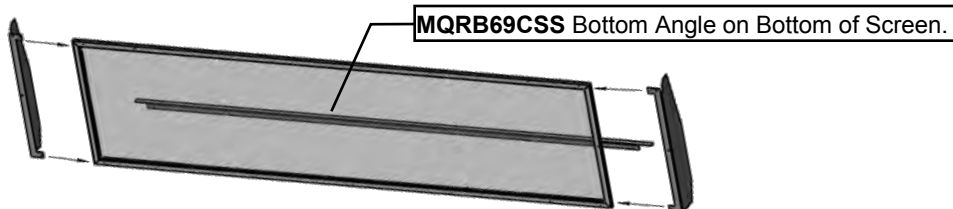
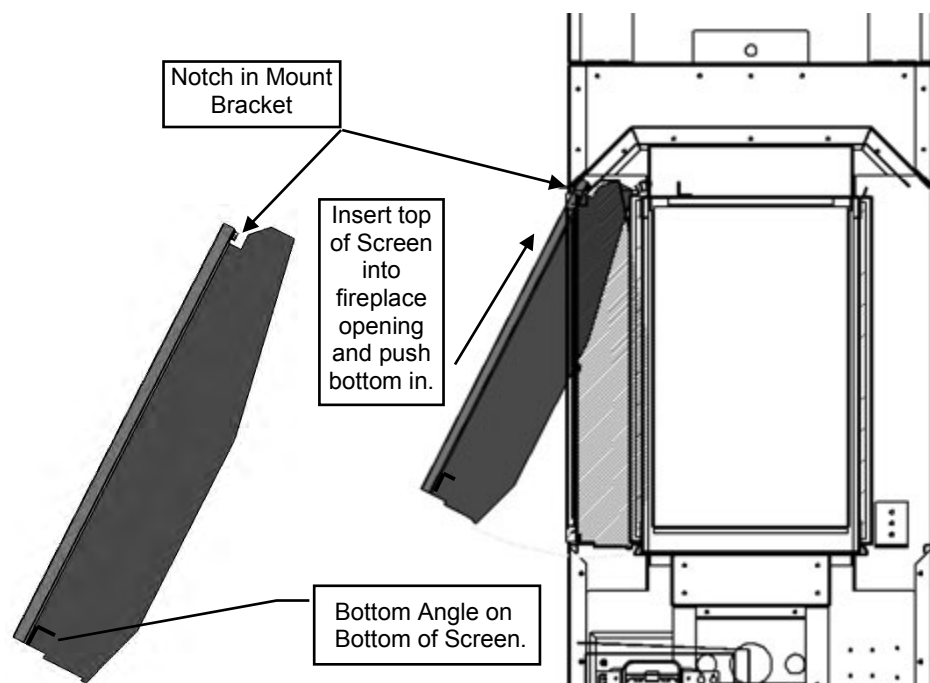
Fasten Screen Mount Brackets to Child Safety Screen with supplied screws.

**MQRB44CSS / MQRB51CSS****MQRB69CSS Contents of Kit:**

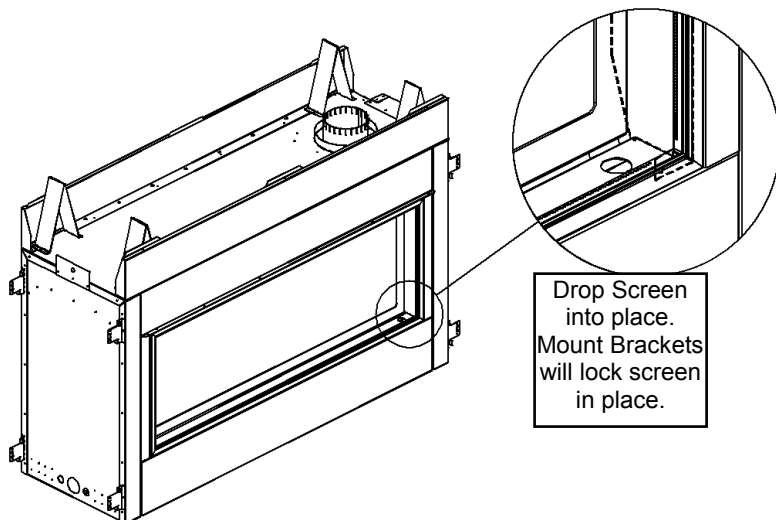
- [1] Child Safety Screen
- [1] Bottom Angle
- [2] Screen Mount Brackets
- [11] 3/8" x 1/2" Screws

Assembly Instructions:

Fasten Screen Mount Brackets to Child Safety Screen with supplied screws.

**MQRB69CSS Bottom Angle on Bottom of Screen.****Notch in Mount Bracket**

Insert top of Screen into fireplace opening and push bottom in.

Bottom Angle on Bottom of Screen.

Drop Screen into place. Mount Brackets will lock screen in place.

⚠ WARNING:

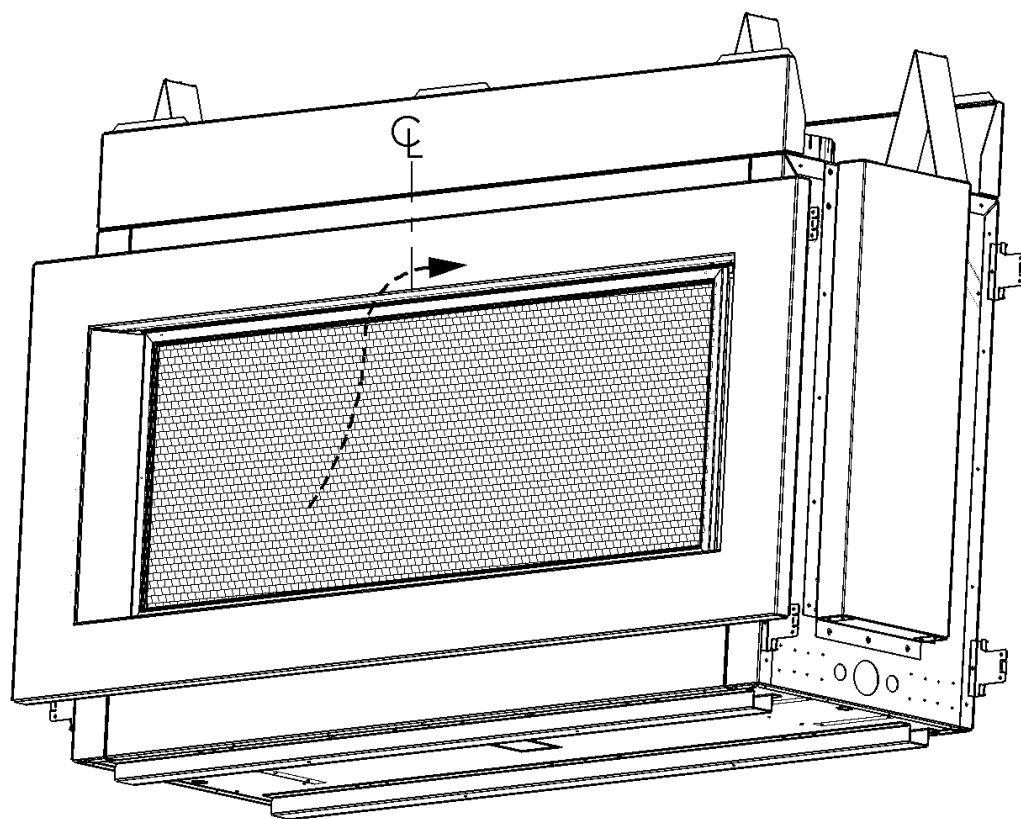
Wait until unit is **COMPLETELY** cool before touching glass or attempting to install or remove Child Safety Screen.

To remove Safety Screen, **WAIT UNTIL FIREPLACE IS COMPLETELY COOL.** Push up Screen Frame and pull bottom away from fireplace.

To remove Safety Screen, **WAIT UNTIL FIREPLACE IS COMPLETELY COOL.**

Locate approximate top center of screen. Push upward and inward in a rapid motion.

Bottom of screen will push out.



⚠ WARNING:

Wait until unit is
COMPLETELY cool
before touching glass
or attempting to install
or remove Child Safety
Screen.

Locate approximate top center of screen.



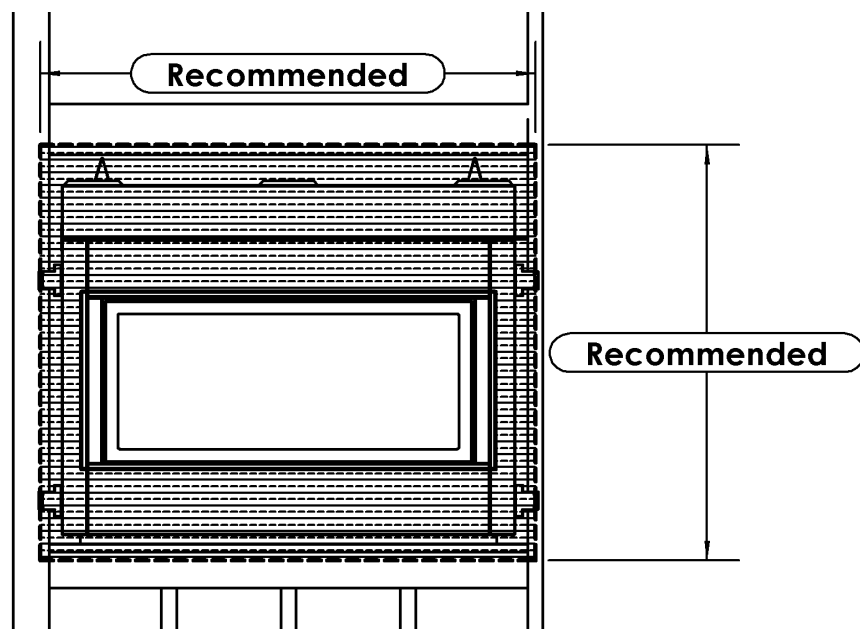
Push upward and inward in a rapid motion.



Recommendations for Finishing of Clean View Linear Products

When finishing the wall around the fireplace, it is critical that the wall covering be fastened properly. It is acceptable to pre-drill holes and use self-tapping screws which may be used to fasten a backer for tile, marble, etc. Screws being installed through non-combustible board should be self-tapping type with a maximum length of 2 inches. Wall covering fasteners, such as screws or nails, are not permitted in some locations. Do not drill or install longer screws which may penetrate into the lower cover panel area as this may damage internal components.

- Only **non-combustible** materials may be used over the face of the appliance.
- We recommend that CONCRETE BOARD (non-combustible material) be tied in to the entire perimeter of the fireplace for durability.



Finishing Recommendations (Obtained from professional construction contractors and finishers):

- Frame unit with metal studs (minimum 20 gauge). **Wooden studs may be used, but may cause drywall screws to pop or pull due to wood studs drying out.**
- Minimum of 1/2" CONCRETE BOARD cement board (this **non-combustible** panel is ULC listed as a wall shield/floor protector) and fasten to the entire perimeter framing.
- Use fiberglass (mesh) tape for all joints in area of the fireplace.
- Use Yellow joint mud (contains high amounts of glue) – two coats, finishing with one coat of green topping mud, sand and prep for painting.
- If not using a surround, a metal "L" Trim may be used to finish perimeter of CONCRETE BOARD.
- Refer to the following website for more information on using CONCRETE BOARD Cement Board: www.cgcinc.com

OTHER NOTES:

- A **full single sheet** of non-combustible board (no joints) above the unit is recommended if possible.
- It is preferred to attach the non-combustible board to **framing only** and not directly to the unit to allow for expansion and contraction during normal operation.
- Lighter colored painted surfaces may discolor due to heat exposure.

Pre-installation Questions and Answers

About curing of the paint

Your stove or fireplace has been painted with the highest quality silicone stove paint. This paint dries quickly in 15-20 minutes when first applied at the factory. However, due to the high temperature silicone components, the paint will cure when heat is applied to the appliance as it is first used. The following information applies to the curing process to get the paint fully hard and durable.

Fire the appliance four successive times for 10 minutes each firing and a 5 minute cool down between each. Be aware during log and firebox paint curing that a white deposit may be developing on the inside of the glass doors. It is important to remove this white deposit from the glass doors using a fireplace glass cleaner.

- Babies, small children, pregnant women and pets should leave the area during the cure phase.
- Ventilate well, open doors and windows.
- Do not touch during curing.

Why does my fireplace or stove give off odour?

It is normal for your fireplace to give off some odor at first. This is due to the curing of the paint, adhesives, silicones and any undetected oil from the manufacturing process as well as the finishing materials used with the installations (e.g. marble, tile and the adhesives used to adhere this product to the walls can react with heat and cause odours).

It is recommended that you burn your gas fireplace or stove for a minimum of four hours at a time with the fan off (if a fan is present) after the curing of the paint has been completed. These odours can last upward to 40 hours of burn time; keep burning at a minimum of four hours per use until odours dissipate.

Noise coming from the fireplace?

Noise is caused by the expansion and contraction of metal as the appliance heats up and cools down. This is normal and is similar to the sounds produced by a furnace or heating duct. This noise does not affect the operation or longevity of your fireplace.

It is also normal for the fan to make some noise when it comes on. This noise can be reduced somewhat by turning down the speed of the fan with the variable speed control. Be aware, however, that this will reduce the volume of heated air circulated into the room by the fan.

Note to the Installer:

Be sure appliance is working properly and its operation (including remote control operation, if included) is fully explained to and understood by the customer.

Operations and Maintenance Instructions

For safe installation and operation note the following:

- Be sure to read and understand all the instructions in this manual before operation of appliance.
- Ensure all wiring is correct and properly enclosed to prevent possible shock.
- Check for gas leaks.
- Make sure the glass door is properly installed before operation. Never operate the appliance with the glass door removed.
- Make sure venting and termination cap are installed and unobstructed.
- If brick or porcelain liners are used, ensure they are installed.
- Verify that the pilot can be seen when lighting the appliance. If not, the log or rock placement is incorrect.
- If the unit is turned off, you must wait a minimum of 60 seconds before re-lighting it.
- Venting systems should be periodically examined by a qualified agency.
- The flow of combustion and ventilation air must not be obstructed.
- The Burner/Log Assembly has been engineered and permanently adjusted for proper flame control.
- Periodically remove the logs from the grate assembly and vacuum any loose particles from the grate and burner areas. See Log Placement page to remove logs. Vacuum burner parts and replace logs.
- Never use your gas fireplace as a cooking device.
- Label all wires prior to disconnection when servicing controls. Wiring errors can cause improper and dangerous operation. Verify proper operation after servicing.
- Areas in and around the Chase Vent Openings should be cleaned annually.

Warnings, Installations and Operations - Installation Regulations

This gas appliance must be installed by a qualified installer in accordance with local building codes, or in the absence of local codes, with the current CAN/CSA-B149.1 or .2 Installation Code (in Canada) or the current National Fuel Gas Code Z223.1- NFPA 54 when installed in the United States.

This appliance, when installed, must be electrically connected and grounded in accordance with local codes, or in the absence of local codes, with the current CSA C22.1 Canadian Electrical Code or with the National Electrical Code; ANSI/NFPA 70 when installed in the United States.



FOR SAFE INSTALLATION AND OPERATION OF YOUR GAS FIREPLACE PLEASE NOTE THE FOLLOWING:

1. Do not clean when the glass is hot.
2. Do not use abrasive cleaners.
3. Using a substitute glass will void all product warranties.
4. For safe operation, glass doors must be closed.
5. When purging the gas line, the glass front must be removed.
6. Do not strike or abuse glass. Take care to avoid breakage.
7. Do not alter gas orifice.
8. No substitute materials may be used other than factory supplied components.
9. This appliance gives off high temperatures and should be located out of heavy traffic areas and away from furniture and draperies.
10. Children and adults should be alerted to the hazards of the high surface temperatures of this appliance and should stay away to avoid burns or ignition of clothing.
11. Young children should be carefully supervised when they are in the same room as the appliance. Toddlers, young children and others may be susceptible to accidental contact burns. A physical barrier is recommended if there are at risk individuals in the house. To restrict access to a fireplace or stove, install an adjustable safety gate to keep toddlers, young children and other at risk individuals out of the room and away from hot surfaces.
12. Under no circumstances should any solid fuels (wood, paper) be used in this appliance.
13. Under no circumstances should this appliance be modified. Any parts that have to be removed for servicing should be replaced prior to operating this appliance.
14. Any safety screen, guard, or barrier removed for servicing an appliance must be replaced prior to operating the appliance.
15. Installation and repair should be done by a qualified service person. The appliance should be inspected before use and at least annually by a professional service person. More frequent cleaning may be required due to excessive lint from carpeting, bedding material, et cetera. It is imperative that control compartments, burners and circulating air passageways of the appliance be kept clean. Make sure that the gas valve and pilot light are turned off before you attempt to clean this unit.
16. Clothing or other flammable material should not be placed on or near the appliance. This appliance should not be used as a drying rack for clothing nor should Christmas stockings or decorations be hung from it.
17. Do not use this heater if any part has been under water. Immediately call a qualified service technician to inspect the heater and to replace any part of the control system and any gas control which has been under water.
18. Do not operate appliance unless completely installed as per installation instructions.
19. Failure to position the parts in accordance with these diagrams or failure to use only parts specifically approved with this appliance may result in property damage or personal injury.
20. **WARNING: Do not operate appliance with the glass front removed, cracked or broken. Replacement of the glass should be done by a licensed or qualified service person.**
21. The appliance area must be kept clear and free from combustible materials, gasoline, and other flammable vapors and liquids.
22. The front of the fireplace gives off high temperatures that could ignite combustible material which is kept close to the front of the unit.
23. Ensure that power to the Fireplace is turned off before servicing.
24. Do not operate this Fireplace without the glass front or with a broken glass.
25. Improper installation, adjustment, alteration, service or maintenance can cause injury or property damage. Refer to the owner's information manual provided with this appliance. For assistance or additional information consult a qualified installer, service agency, or the gas supplier.
26. Operation of this appliance when not connected to a properly installed and maintained venting system or tampering with the blocked vent shutoff system can result in carbon monoxide (CO) poisoning and possible death.
27. This appliance is equipped with a three-prong (grounding) plug for your protection against shock hazard and should be plugged directly into a properly grounded three-prong receptacle. Do not cut or remove the grounding prong from this plug.
28. **NOT INTENDED FOR USE AS A PRIMARY HEAT SOURCE.** This appliance is tested and approved as either supplemental room heat or as a decorative appliance. It should not be factored as primary heat in residential heating calculations.
29. This appliance must not be connected to a chimney flue serving a separate solid-fuel burning appliance.

Installation Requirements for the Commonwealth of Massachusetts

In the Commonwealth of Massachusetts, the installer or service agent shall be a plumber or gas fitter licensed by the Commonwealth.

When installed in the Commonwealth of Massachusetts or where applicable codes; the unit shall be installed with a CO detector per the requirements listed below.

1. For direct-vent appliances, mechanical-vent heating appliances or domestic hot water equipment, where the bottom of the vent terminal and the air intake is installed below four feet above grade the following requirements must be satisfied:
 - A. If there is not one already present, on each floor level where there are bedroom(s), a carbon monoxide detector and alarm shall be placed in the living area outside the bedroom(s). The carbon monoxide detector shall comply with NFPA 720.
 - B. A carbon monoxide detector shall be located in the room that houses the appliance or equipment and shall:
 - Be powered by the same electrical circuit as the appliance or equipment such that only one service switch services both the appliance and the carbon monoxide detector;
 - Have battery back-up power;
 - Meet ANSI/UL 2034 Standards and comply with NFPA 720; and
 - Have been approved and listed by a Nationally Recognized Testing Laboratory as recognized under 527 CMR.
 - C. A Product-approved vent terminal must be used, and if applicable, a Product-approved air intake must be used. Installation shall be in strict compliance with the manufacturer's instructions. A copy of the installation instructions shall remain with the appliance or equipment at the completion of the installation.
 - D. A metal or plastic identification plate shall be mounted at the exterior of the building, four feet directly above the location of vent terminal. The plate shall be of sufficient size to be easily read from a distance of eight feet away, and read "Gas Vent Directly Below".
2. For direct-vent appliances, mechanical-vent heating appliances or domestic hot water equipment where the bottom of the vent terminal and the air intake is installed above four feet above grade the following requirements must be satisfied:
 - A. If there is not one already present, on each floor level where there are bedroom(s), a carbon monoxide detector and alarm shall be placed in the living area outside the bedroom(s). The carbon monoxide detector shall comply with NFPA 720.
 - B. A carbon monoxide detector shall:
 - Be located in the room that houses the appliance or equipment;
 - Be either hard-wired or battery powered or both; and
 - Shall comply with NFPA 720.

A Product-approved vent terminal must be used, and if applicable, a Product-approved air intake must be used. Installation shall be in strict compliance with the manufacturer instructions. A copy of the installation instructions shall remain with the appliance or equipment at the completion of the installation.

For the state of Massachusetts a **T-handle gas shut-off valve** must be used on a gas appliance. This T-handle gas shut-off valve must be listed and approved by the state of Massachusetts. This is in reference to the state of Massachusetts state code CMR238.

Carbon Monoxide (CO) Detector

NOTE: It is recommended that a Carbon Monoxide (CO) Detector be installed in or near bedrooms and on all levels of your home. Place a detector about 15ft [4.5m] outside the room that houses your gas appliance.

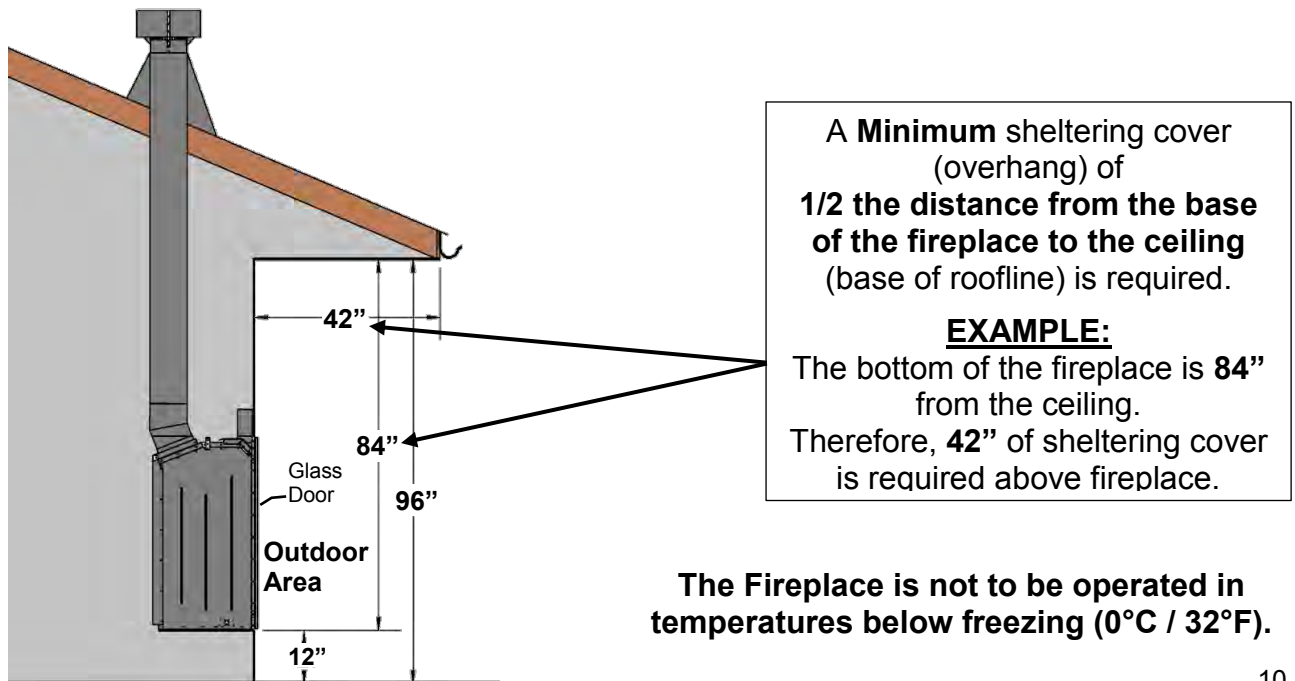
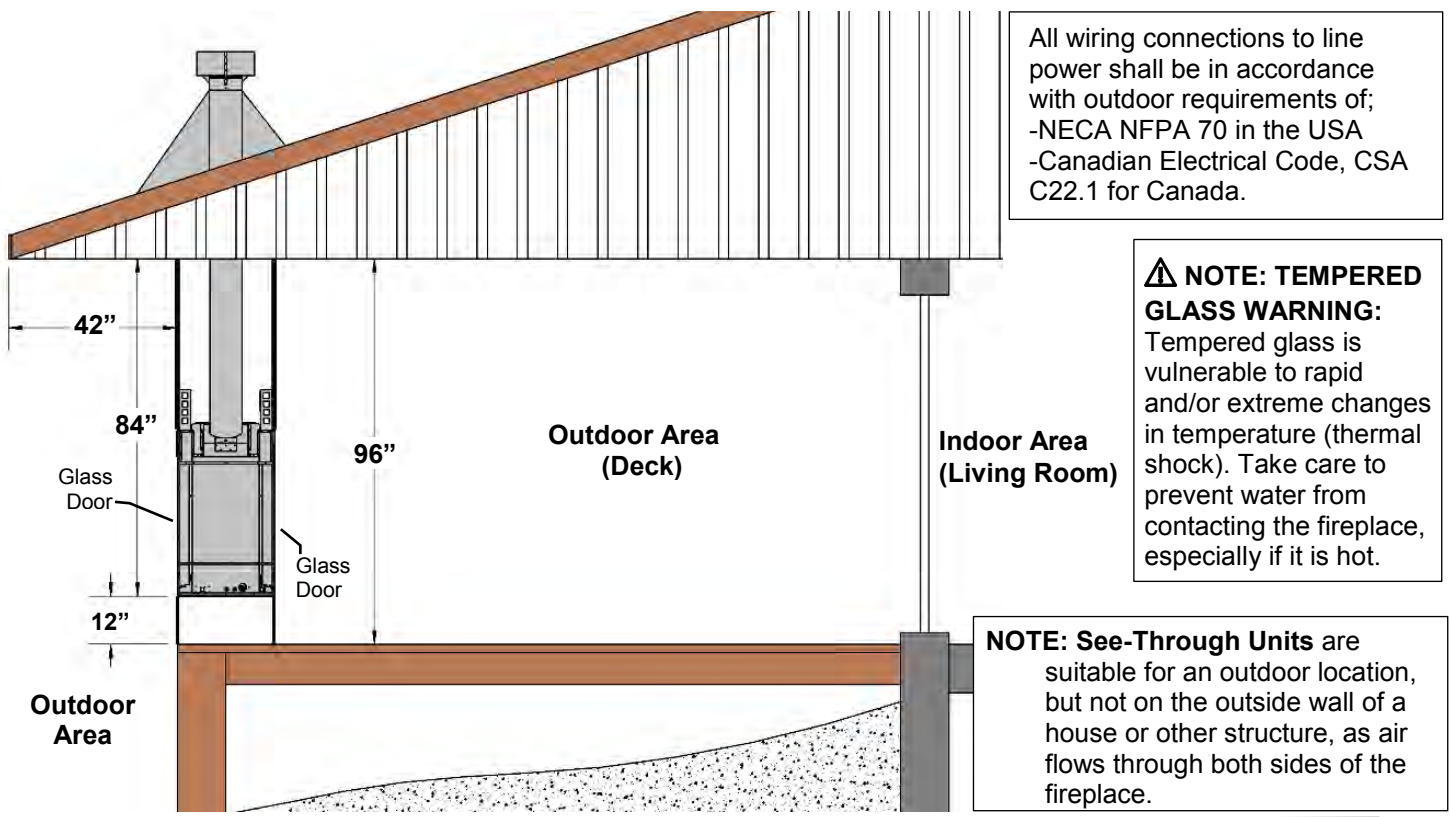
Certified for installation in a bedroom or bed/sitting room. In Canada must be installed with listed millivolt thermostat. In USA see local codes.

Fireplace Installations in Covered Outdoor Locations – FOR BASIC MILLIVOLT UNITS ONLY- NO FAN – NO LIGHTS-

CAUTION – Installation of an indoor gas fireplace with an outdoor exposure is not covered under the (ANSI Z21.88 – CSA 2.22 or ANSI Z21.50 – CSA 2.33) standard(s) used to certify the indoor gas-fired fireplace. The Intertek safety certification will not apply to this installation method. This installation method must be deemed acceptable by the Authority Having Jurisdiction (AHJ) prior to the indoor gas fireplace being installed.

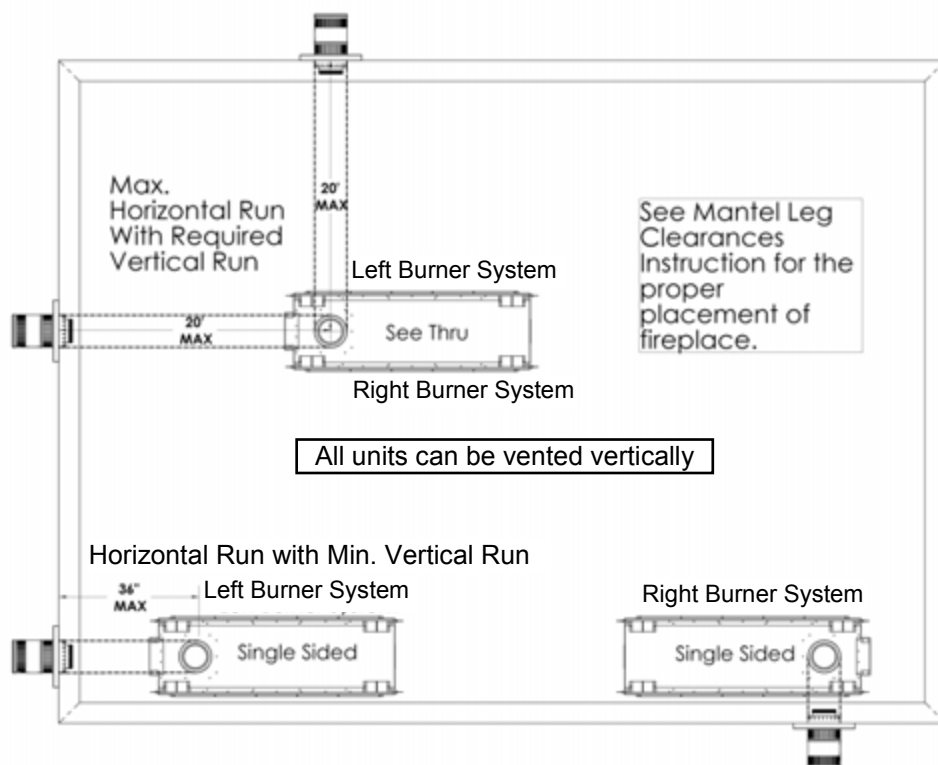
Kingsman and Marquis Direct Vent fireplaces may be installed into outdoor locations provided they are suitably protected from direct water impingement.

However, all installation clearances in the appliance manual must be observed. Framing, Clearances to Combustibles, Mantel Heights, Facing Requirements, Venting Installation, etc. **Use supplied Safety Screen.**

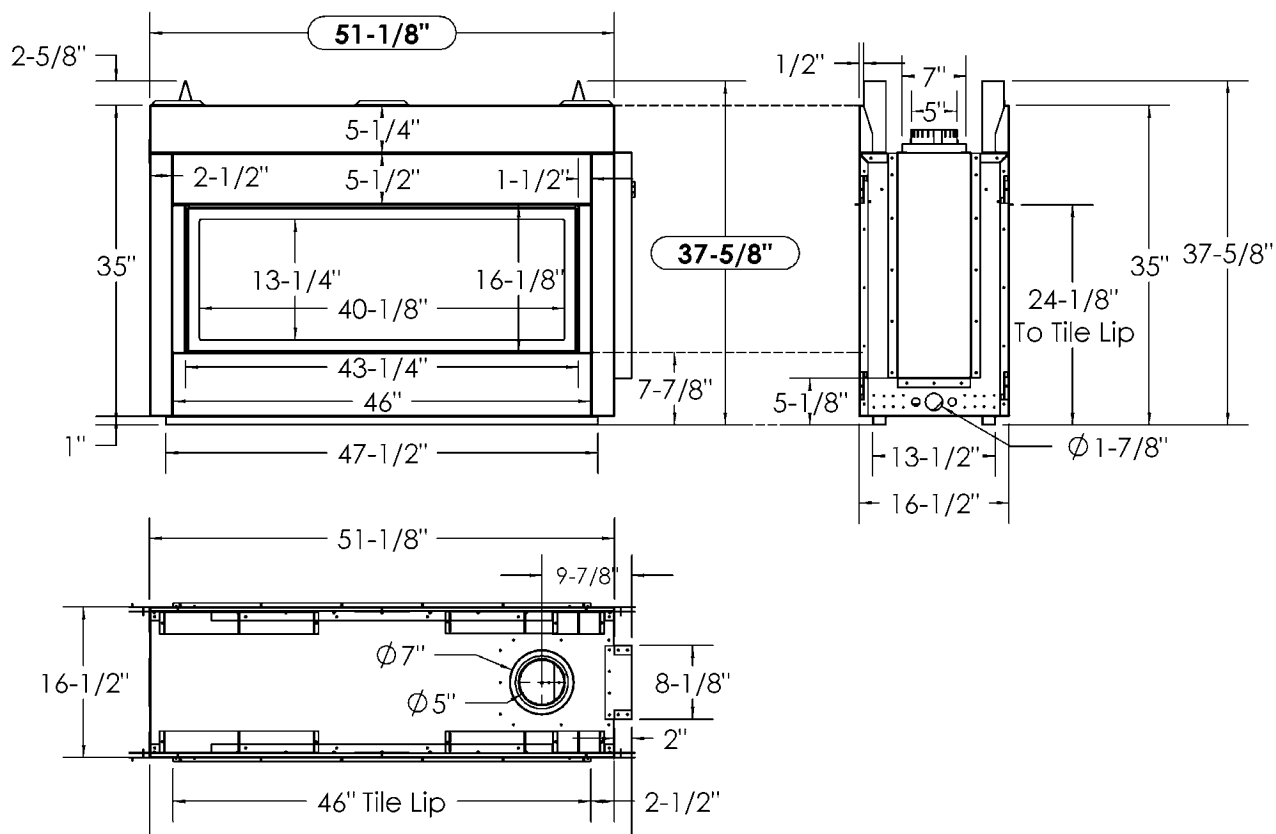


MQRB5143 Locating Your Appliance

All units are Factory Set for a Left Hand Burner System. Right Hand Burner System Requires Valve to be relocated to right side of unit.



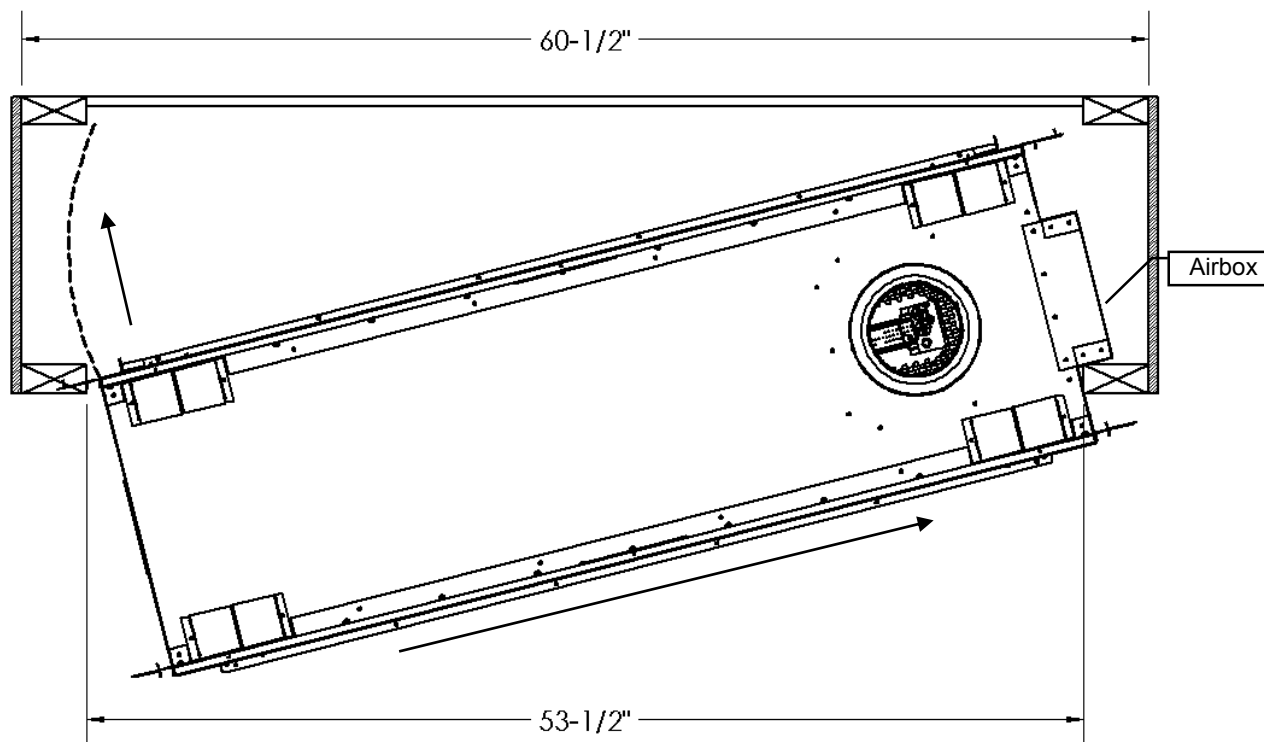
MQRB5143 Fireplace Dimensions



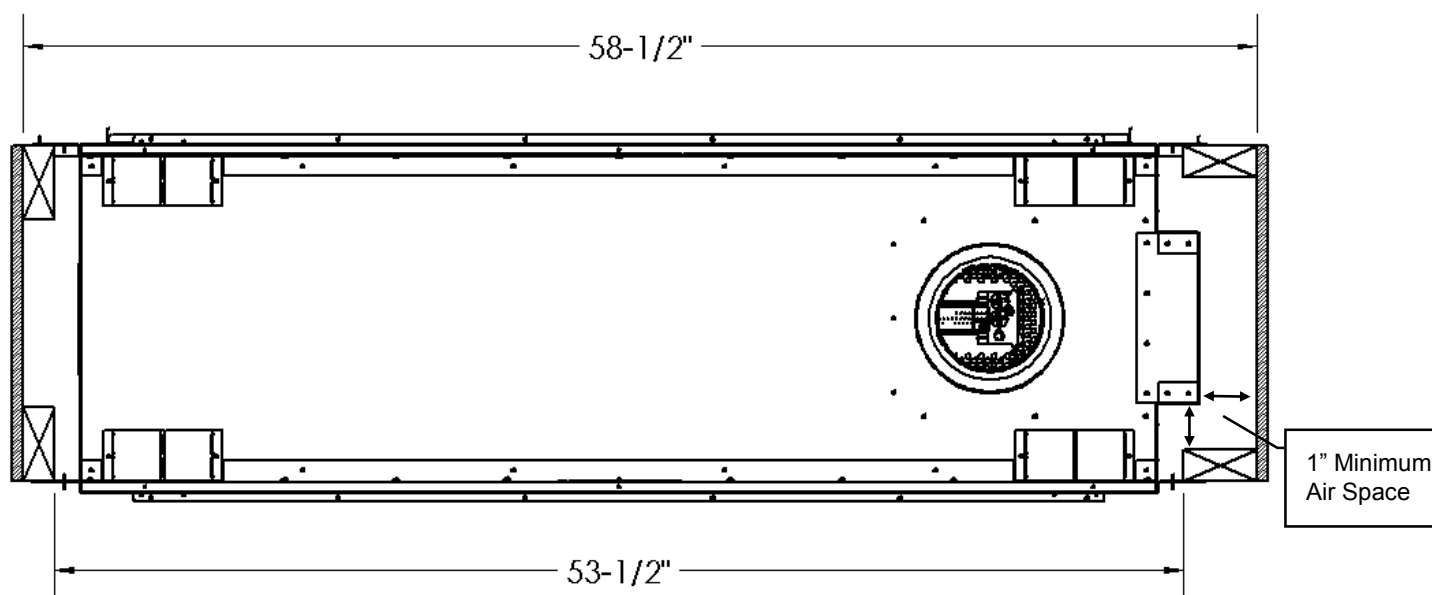
MQRB5143 - Pre-existing Enclosures vs Framing Enclosure Around Fireplace

Inserting Unit Into Pre-existing Enclosure: Enclosure must be 60-1/2" inside width.

Opening should be greater than 53-1/2" minimum. Insert airbox on side of unit first and swing into place.



Framing Enclosure Around Fireplace: If unit is in place before enclosure is built, minimum clearances for opening can be followed.

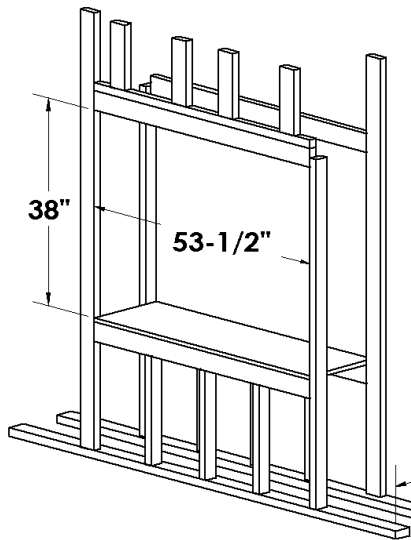


MQRB5143 -See Through Framing

An **MQRB5143SK** Kit is required for a See Thru Installation.

Before you begin Framing- Determine for both sides whether the **Wall Surface** will be flush with the face of the fireplace (Fireplace and wall to be covered with Non-Combustibles, such as tile), or the **Framing** will be flush with the face of the fireplace (Flat Wall appearance).

Note: If using Optional Surround, Maximum Thickness for Non-Combustible Material is 3/4".



Framing Style shown is for illustration purposes only.
This structure is NOT load bearing.
[Steel Stud Framing Shown]

Framed Opening 53-1/2" Wide x 38" Tall

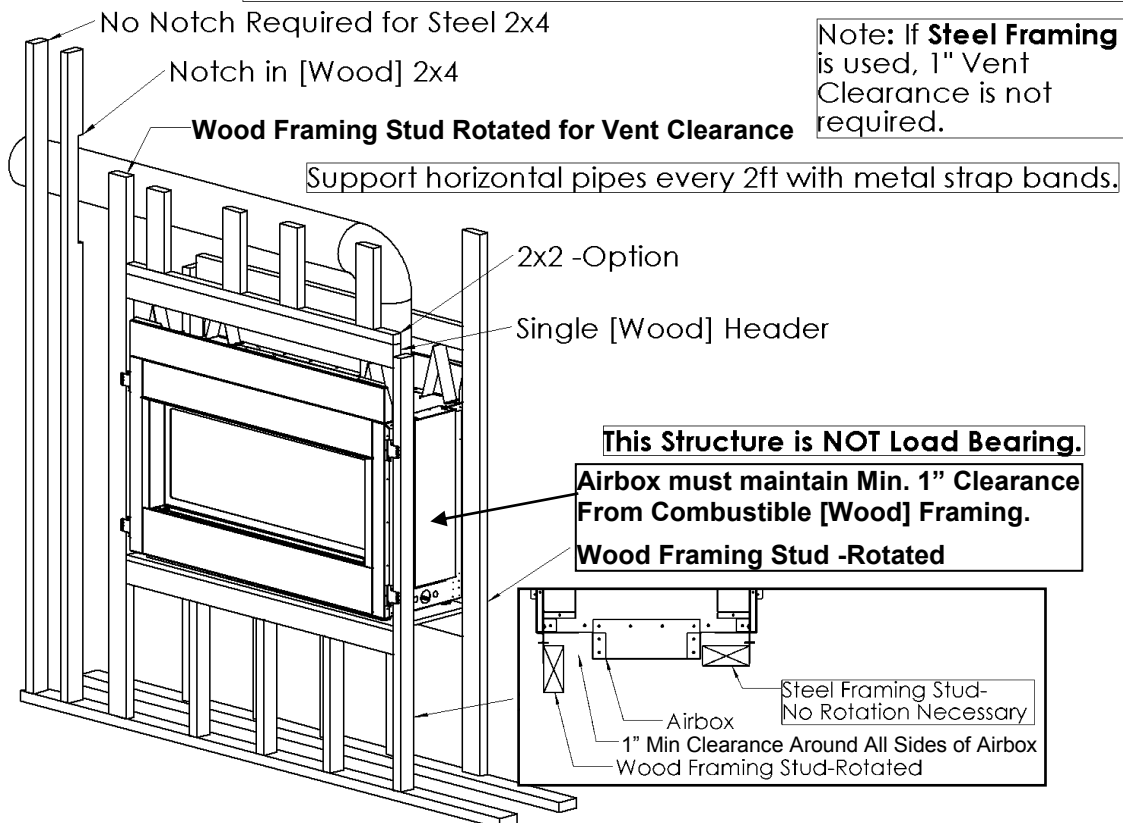
Dimension

15-3/8"

***15-3/8"** Dimension is for **Wall Surface Flush with Unit on Both Sides.**
Add 1/2" to this Dimension for each side where a non-combustible wall surface will cover the unit (see **Nailing Tab Guide** page also).

Fireplace Vent **Must** Maintain Min. 1" Clearance from Combustible [Wood] Framing.

Many Framing Options are possible. A few Ideas are shown here.



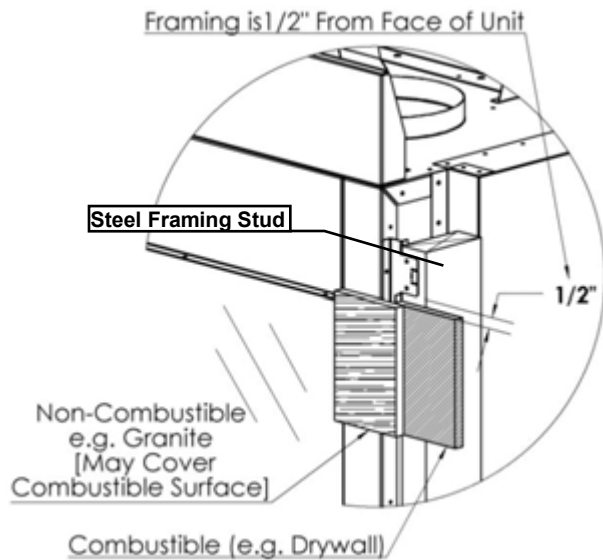
Also Refer to **Clearance to Combustibles, Enclosure Heights, and Venting** Sections of this Manual.

(Continued)

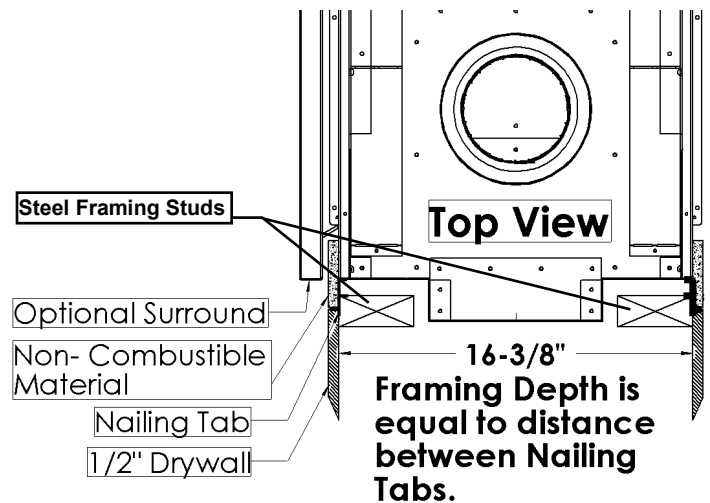
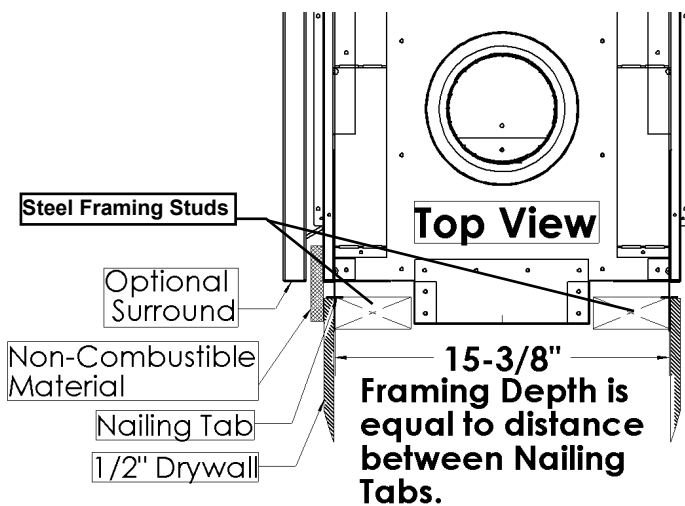
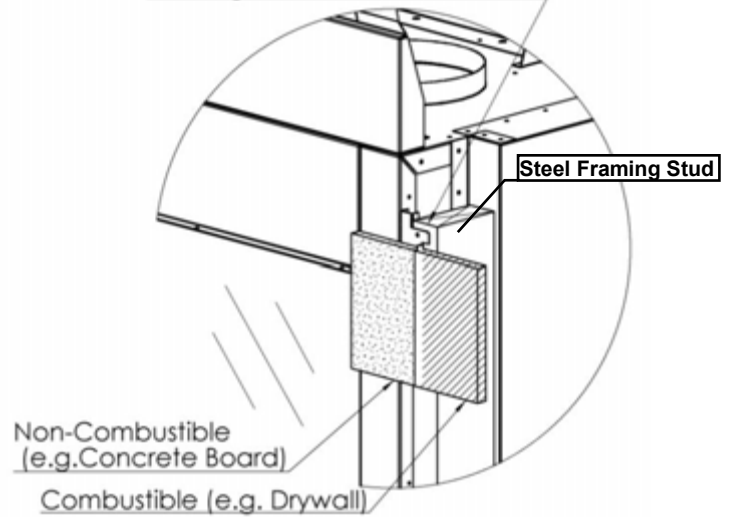
Wall Surface Flush With Face of Fireplace

Framing Flush With Face of Fireplace

[Steel Stud Framing Shown.]

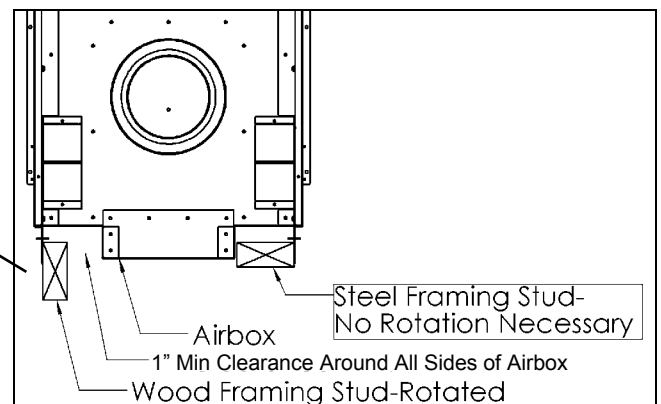


Framing is Flush with Face of Unit



Note: If using Optional Surround, Maximum Thickness for Non-Combustible Material is 3/4".

Note: If Combustible (Wood) Framing Studs are used, they must be Rotated to allow Min. 1" Clearance from Airbox.



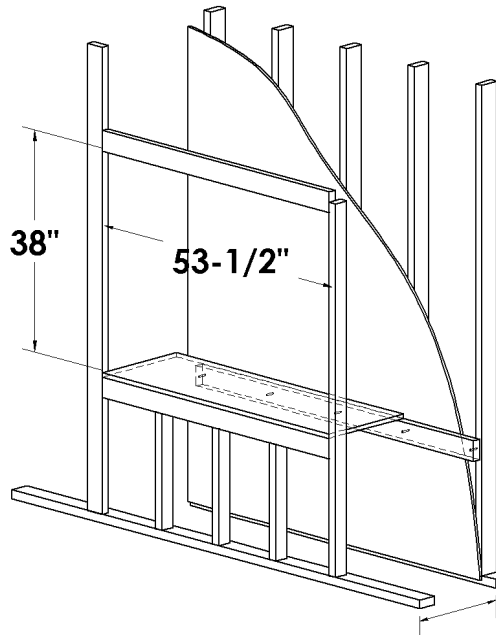
See "Nailing Tab Guide" and "MQRB4436SK / MQRB5143SK / MQRB6961SK" pages before placing unit into the framed opening.

MQRB5143 Single Sided Framing

An **MQRB5143BK** Kit is required for a Single Sided Installation.

Before you begin Framing- Determine whether the **Wall Surface** will be flush with the face of the fireplace (Fireplace and wall to be covered with Non-Combustibles, such as tile), or the **Framing** will be flush with the face of the fireplace (Flat Wall appearance).

Note: If using optional surround, maximum thickness for non-combustible material is 3/4".



Framing Style shown is for illustration purposes only.
This structure is NOT load bearing.
[Steel Stud Framing Shown]

FRAMED OPENING 53-1/2" WIDE x 38" TALL
CANTILEVER FINISHED MINIMUM OPENING IS 57-1/2" WIDE

Dimension

17" Min. *

*** 17" Min.** Dimension is for **Wall Surface Flush** with fireplace.
Add 1/2" to this Dimension where a non-combustible wall surface will cover the unit (see **Nailing Tab Guide** page also).

Fireplace Vent **Must** Maintain Min. 1" Clearance from Combustible [Wood] Framing.

Many Framing Options are possible. A few Ideas are shown here.

No Notch Required for Steel 2x4

Notch in [Wood] 2x4

Wood Framing Stud Rotated for Vent Clearance

Support horizontal pipes every 2ft with metal strap bands.

2x2 -Option

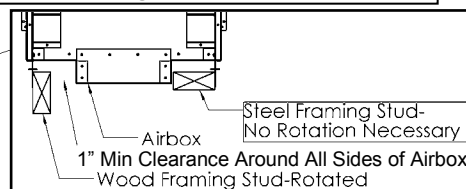
Single [Wood] Header

Note: If **Steel Framing** is used, 1" Vent Clearance is not required.

This Structure is NOT Load Bearing.

Airbox must maintain Min. 1" Clearance From Combustible [Wood] Framing.

Wood Framing Studs Must be Rotated



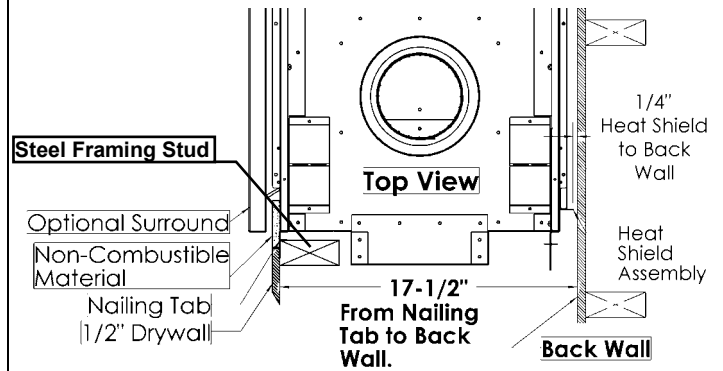
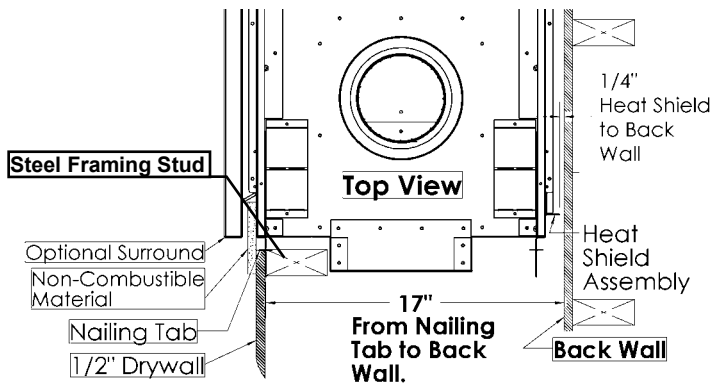
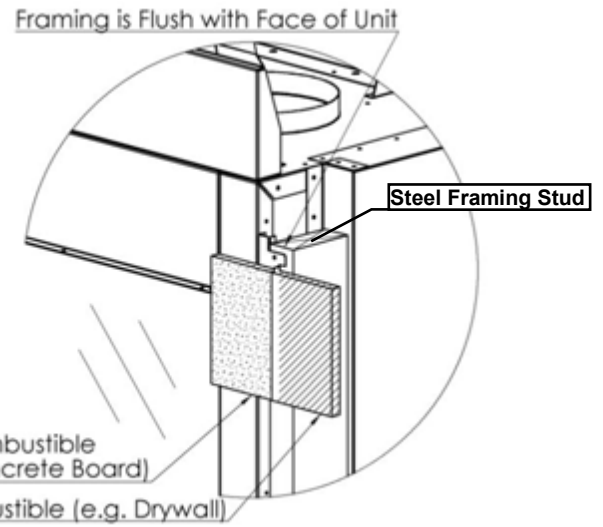
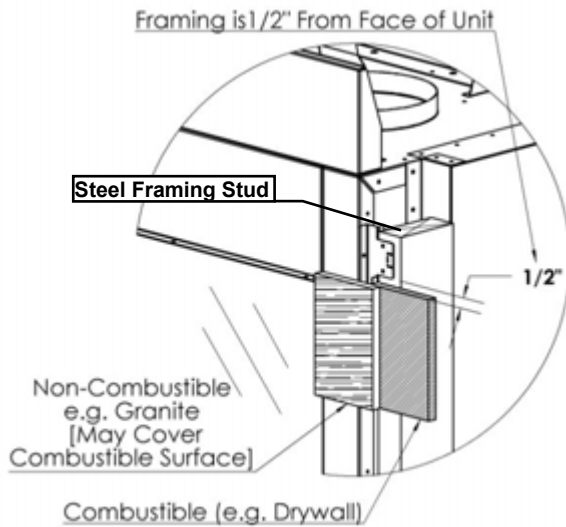
Also Refer to **Clearance to Combustibles, Enclosure Heights, and Venting** Sections of this Manual.

(Continued)

Wall Surface Flush With Face of Fireplace

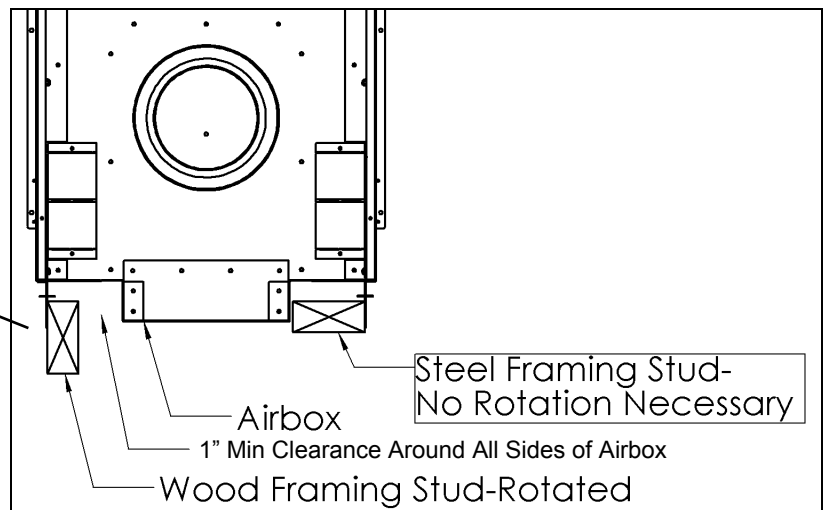
Framing Flush With Face of Fireplace

[Steel Stud Framing Shown.]



Note: If using Optional Surround, Maximum Thickness for Non-Combustible Material is 3/4".

Note: If Combustible (Wood) Framing Studs are used, they must be Rotated to allow Min. 1" Clearance from Airbox.



See "Nailing Tab Guide" and "MQRB4436BK / MQRB5143BK / MQRB6961BK" pages before placing unit into the framed opening.

MQRB5143 Combustible Enclosure Heights

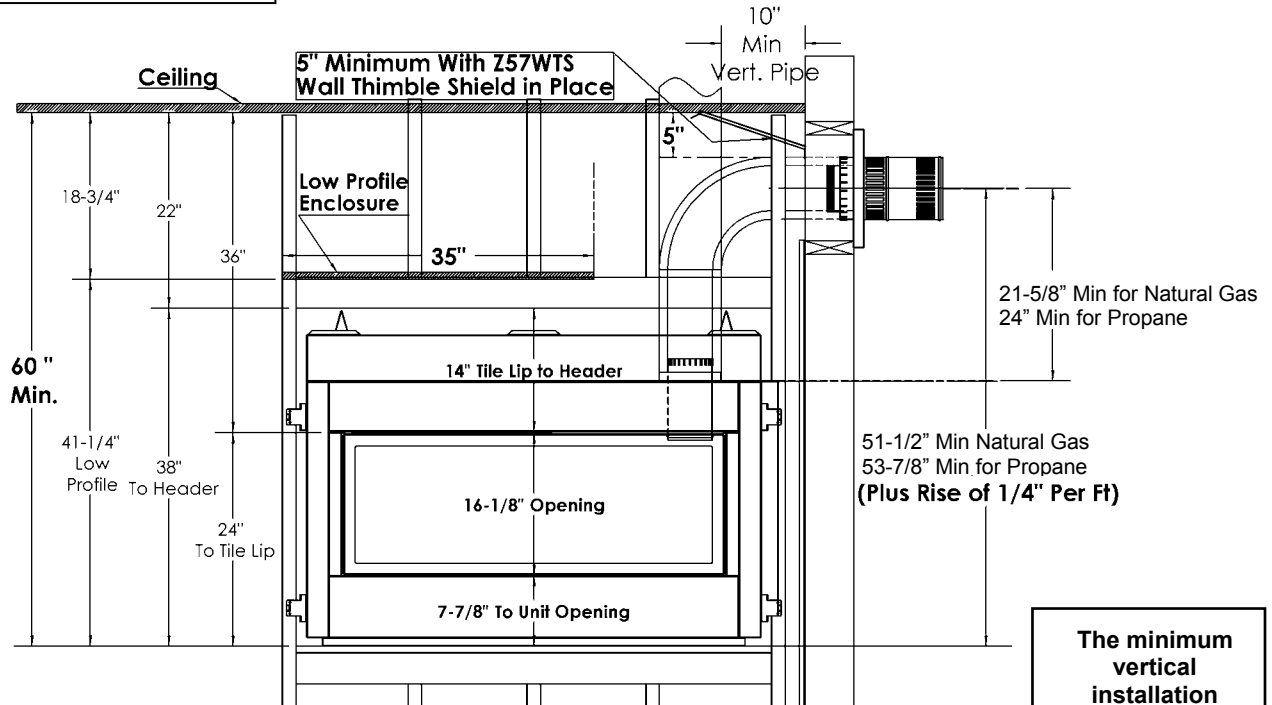
Cold Climate Recommendation

When installing this fireplace against an exterior wall or chase, it is recommended that the outer walls be insulated to conform to applicable insulation codes. Drywall must be installed over vapor barrier and insulation material to prevent direct contact with the appliance.

See Thru or Single Sided Installation

[Steel Stud Framing Shown]

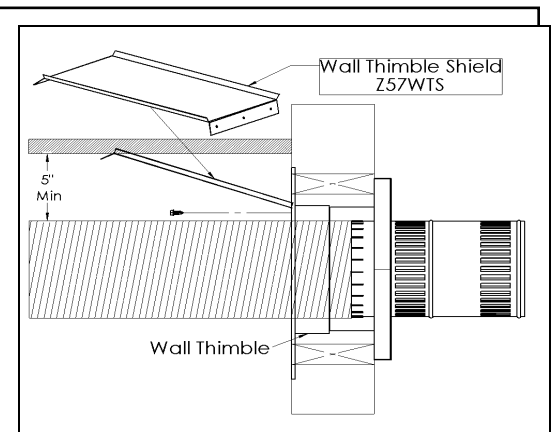
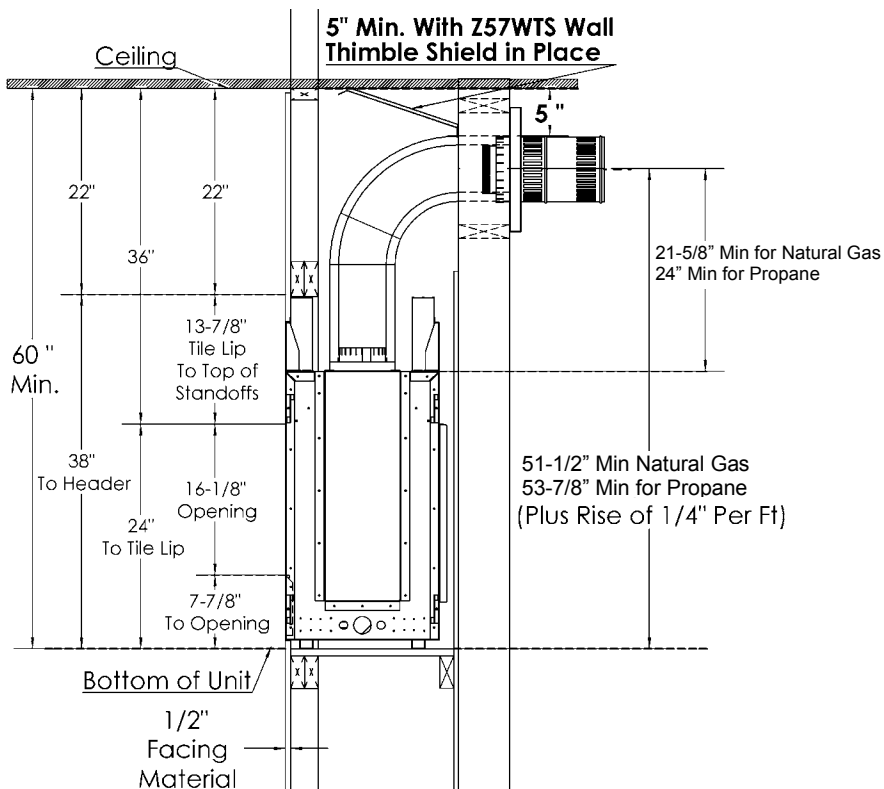
For Propane Horizontal installations the venting must be a minimum of two feet vertical off the flue before going horizontal.



The minimum vertical installation height must be adhered to.

Flex pipe venting must be fully stretched.

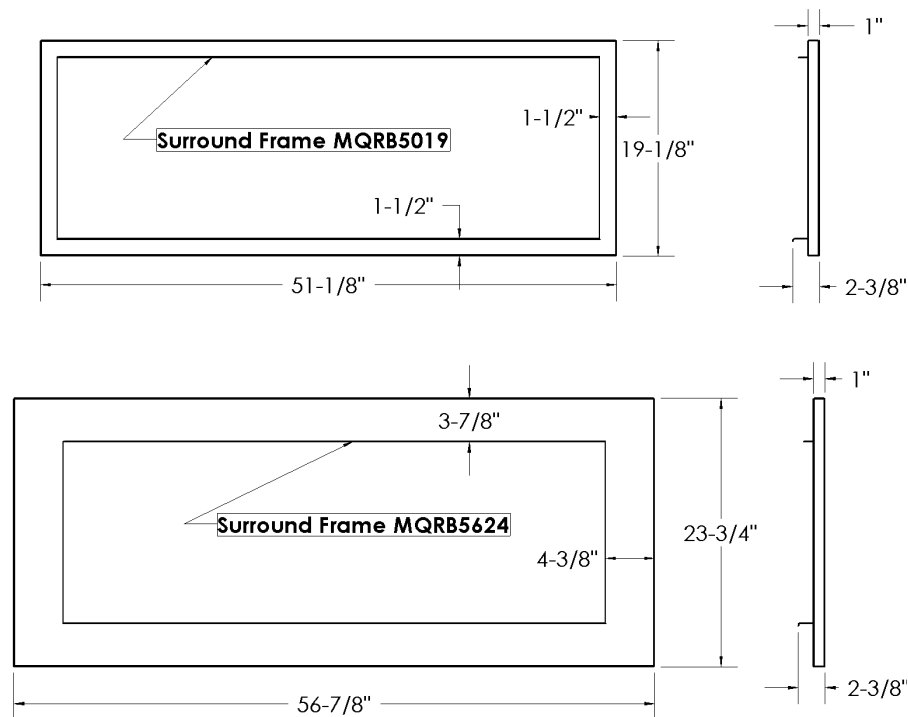
Single Side Installation Only [Steel Stud Framing Shown]



The Wall Thimble Shield Z57WTS is required in All Enclosures below 72" [Seventy-Two Inches].

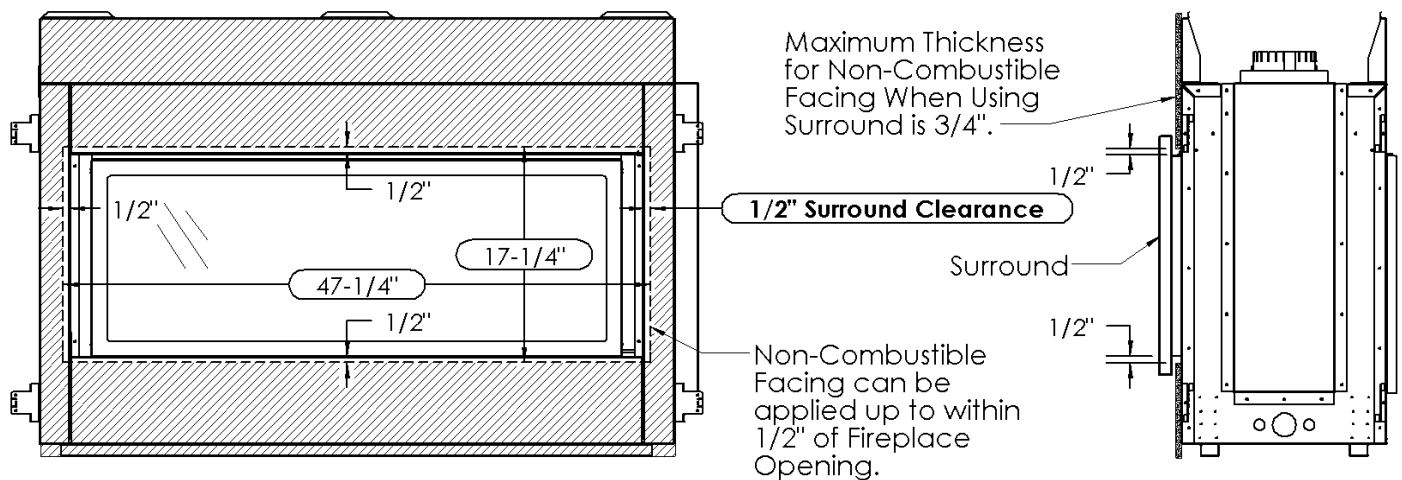
Place Wall Thimble Shield Z57WTS against the Wall Thimble Immediately above the Vent. Install the Wall Thimble Shield using [3] DT Screws.

Surround Dimensions MQRB5143



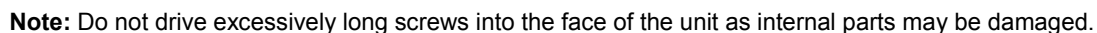
- The Surround Frames are 1" thick, with a 3/4" space behind the frame.
- When using Surrounds, Maximum Thickness for Non-Combustible Facing Materials is 3/4".
- The Fireplace may be covered up to within 1/2" of the opening with non-combustible materials.

Surround Clearances 5143



These specifications are the same for all Models (5143N, 5143NE, 5143LP, 5143LPE).

[Steel Stud Framing Shown.]



MQRB5143 Mantel Clearances

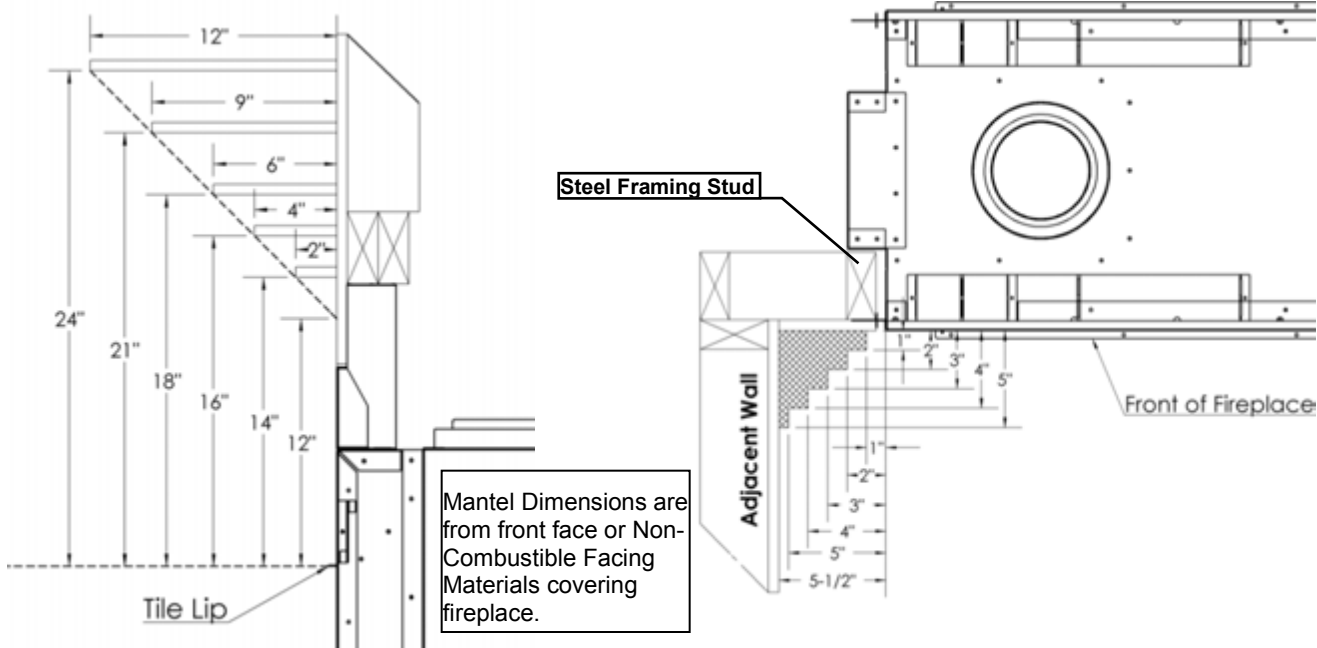
Before installing any mantels it is important to determine the combustibility of its material(s). There are two types of mantels to consider: Combustible and Non-Combustible.

A **Combustible Mantel** is one that consists of material(s) that may discolor, combust, or lose its integrity in the presence of heat. These types of mantels must strictly conform to the dimensional requirements shown below.

Conversely, a **Non-Combustible Mantel** is one that is constructed with material(s) that will not combust. Check your local codes and regulations to determine whether your mantel is Combustible or Non-Combustible.

The advantage to Non-Combustible Mantels is that it may extend right up to the tile lip of the fireplace. Combustible mantels must adhere to the dimensional restrictions shown below.

[Steel Stud Framing Shown.]



⚠️-Combustible Objects on Non-Combustible Mantel Warning-
Combustible objects must not be placed on a Non-combustible Mantel unless the mantel meets the dimensional requirements for a Combustible Mantel. Refer below to determine whether your mantel conforms to the requirements of a Combustible Mantel.

Clearance to Combustibles	MQRB5143
Front	24" [61cm]
Back Shield Kit to Wall	0" [0cm]
Side (from Stand-offs)	0" [0cm]
Floor*	0" [0cm]
Airbox on Flue Side of Unit	1" [25cm]
Minimum Ceiling Height (from bottom of fireplace)	60" [153cm]
Top (from Stand-offs)	0" [0cm]
Top of 90° Bend under 72" Enclosure	5" (With Wall Thimble Shield [Z57WTS]) All Vent Systems
Top of 90° Bend over 72" Enclosure	4" All Vent Systems
Top of Horizontal Pipe	2" All Vent Systems
Side & Bottom of Horizontal Pipe	1" All Vent Systems
Vertical Vent Pipe	1" All Vent Systems
Vertical Vent Pipe	1" DuraVent-DirectVent Pro / AmeriVent / Selkirk Direct Temp Systems

***Note:** If appliance is installed directly on carpeting or other combustible material other than wood flooring, a metal or wood panel extending the full width and depth of the appliance must be used. Carpet may extend 1 inch above the floor of the appliance.



Unit Illustrated: Model ZCV39NH Zero Clearance Direct Vent Gas
Fireplace Natural Gas, MQLOGF9 Log Set (10 Piece), ZCV39RLH
Refractory Brick Liner (3 Piece, Herringbone Brick), MQ39DD2BL
Designer Door (Series 2) Black c/w Safety Screen.

BENTLEY

ZERO CLEARANCE DIRECT VENT GAS FIREPLACE

 marquis
COLLECTION

Bring the **BIG VIEW** **INDOORS**

With an expansive glass viewing area and clever designer options for customizing the look to suit your personal style, the **Bentley** by Marquis is generating some serious attention.

Available in a range of sizes and styles, you can choose from our mid efficient rated fireplace for ambiance and taking the chill out of the room, or higher efficient version for additional warmth.

With so much style and attention to detail, it's no wonder people are focused on the view indoors!

Visit marquisfireplaces.net to see the latest evolution in fireplaces.

BENTLEY

STANDARD FEATURES

- Dedicated Clean View appliance
- Millivolt or IPI valve system allows operation during a power failure with Hi/Low heat and flame adjustment
- Pan burner with Realistic Flame Pattern
- Safety Screen Barrier
- Proflame II (PF2) Models* include Remote Control: features flame, fan, thermostat, smart thermostat. Bentley 48 (P2) models include accent lighting.



OPTIONAL FEATURES

Fan Kit:

Heat activated with variable speed control

Designer Doors:

Arch, Straight Black (2 options)

Surrounds:

Hearth Mount, Picture Frame, Slim Line Picture Frame

Liners:

Porcelain Reflective or Brick

Media Options:

Contemporary Rocks (2 options), Driftwood Set (2 options), Decorative Stones, Decorative Ember Glass (Glacier Ice, Cobalt Blue, Black, Bronze, White), Ember Chunks or Multi-Colored Cannonballs.

Log Sets:

Choose between Oak log sets, or driftwood log set.

Accent Lighting:

for use with the Glass Tray
(Dealer Installed Item)

Remotes Controls (Millivolt or IPI PF1):

Thermostat on/off, Thermostat on/off modulating, Thermostat on/off modulating and fan control

Thermostats:

Wall Mount or Programmable





Unit Illustrated: Model ZCV39NH Zero Clearance Direct Vent Gas Fireplace Natural Gas, ZCV39GT Glass Tray, MQ39D Driftwood Log Set (4 Piece), MQSTONE Decorative Stones, VLBIT6 Log Bits (Small, 6 Piece Kit), ZCV39PL Porcelain Reflective Panel Liner, ZCV39S1PFBL Surround (Picture Frame 4" Wide).

BENTLEY 39-42

BENTLEY 39 PRODUCT SPECIFICATIONS

MODEL	ZCV39N ZCV39NE ZCV39NE2 [†]	ZCV39LP ZCV39LPE ZCV39LPE2 [†]	ZCV39NH ZCV39NHE ZCV39NHE2 [†]	ZCV39LPH ZCV39LPHE ZCV39LPHE2 [†]
Fuel	Natural Gas	Propane	Natural Gas	Propane
Gas Control	Millivolt / IPI	Millivolt / IPI	Millivolt / IPI	Millivolt / IPI
Input Max.	25,000 BTU	25,000 BTU	28,000 BTU	29,000 BTU
Input Min.	16,750 BTU	20,000 BTU	19,000 BTU	23,000 BTU
FE (P.4.1-15)	52.35% / 52.24%	52.35% / 54.24%	63.81% / 66.17%	66.82% / 68.65%
Glass Size	33"W x 28 5/8"H	33"W x 28 5/8"H	33"W x 28 5/8"H	33"W x 28 5/8"H
Venting	4"/7" Flex or 4" x 6 5/8" Hard Pipe* or Power Vent	4"/7" Flex or 4" x 6 5/8" Hard Pipe* or Power Vent	4"/7" Flex or 4" x 6 5/8" Hard Pipe* or Power Vent	4"/7" Flex or 4" x 6 5/8" Hard Pipe* or Power Vent

**Approved with Kingsman Flex Vent, MG DuraVent-Direct Vent Pro Direct Vent System, Amerivent Direct Vent Pipe System, Selkirk Direct-Temp Venting, ICC Excel Direct Vent, BDM Pro-Form Direct Vent and Metal Fab Sure-Seal DV Pipe System. This appliance is approved with Kingsman (PVH58) Horizontal Power Vent Termination.*



ZCV39N, MQLOGF9 Log Set (10 Piece), ZCV39RLS Refractory Fiber Brick Liner (Stacked Brick), MQ39DD2BL Designer Door (Series 2, Black).



ZCV39N, MQLOGF9 Log Set (10 Piece), ZCV39RLT Refractory Fiber Brick Liner (Traditional Brick), MQ39DD3BL Designer Door (Series 3, Black)



ZCV39N, LOGF3 Log Set (5 Piece), ZCV39RLH Refractory Fiber Brick Liner (Herringbone Brick), MQ39DD1BL Designer Door (Series 1, Black).



ZCV39N, ZCV39GT Glass Tray, MQSTONE Decorative Stones, ZCV39PL Porcelain Reflective Panel Liner.



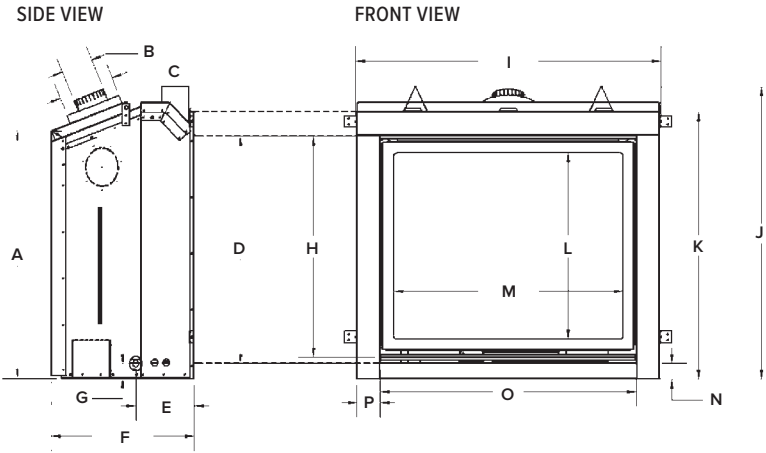
ZCV39N, MQLOGF9 Log Set (10 Piece), ZCV39PL Porcelain Reflective Liner.



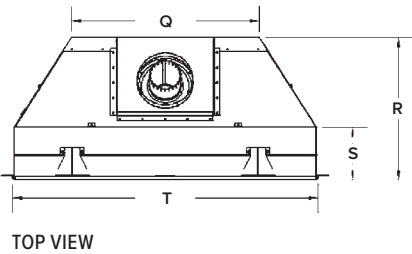
ZCV39N, ZCV39GT Glass Tray, MQROCK3 Contemporary Rock Collection (Multi-Colored), ZCV39PL Porcelain Reflective Panel Liner.

Unit Illustrated: Model ZCV39NH Zero Clearance Direct Vent Gas Fireplace Natural Gas, ZCV39GT Glass Tray, MQG5ZG Glass Media (ZIRCON Glacier Ice, 5 lbs. x3 Bags), ULK2 Universal Light Kit (2 Lamps), ZCV39PL Porcelain Reflective Panel Liner, ZCV39S2PFBL Surround (Picture Frame 1-5/8" Wide).

BENTLEY 39-42 PRODUCT DIMENSIONS



	ZCV39	ZCV42
A	32"	35 1/8"
B	4"	4"
C	7"	7"
D	29 3/8"	32 1/2"
E	7 1/2"	7 9/16"
F	18 3/8"	18 7/16"
G	1 15/16"	1 15/16"
H	28 9/16"	31 11/16"
I	39 3/8"	42 7/16"
J	37 11/16"	40 13/16"
K	34 1/2"	37 5/8"
L	24 1/16"	27 3/16"
M	29 5/8"	33 11/16"
N	2"	2"
O	33"	37 1/16"
P	3"	2 1/2"
Q	24 1/4"	27 7/8"
R	18 7/16"	18 7/16"
S	6 7/8"	6 7/8"
T	39 3/8"	42 7/16"



FRAMING DIMENSIONS

	ZCV39	ZCV42
HEIGHT		
Actual	37 3/4"	40 7/8"
Framing	37 7/8"	41"
FRONT WIDTH		
Actual	39 3/8"	42 3/8"
Framing	39 1/2"	42 1/2"
DEPTH		
Actual	18 3/8"	18 3/8"
Framing	18 1/2"***	18 1/2"***

***Dependent of finishing material used

SURROUNDS

	HEARTH MOUNT (4" WIDE)	PICTURE FRAME (4" WIDE)	PICTURE FRAME (1 5/8" WIDE)
ZCV39	40 5/8"W x 35"H	40 5/8"W x 37"H	36 1/8"W x 32 1/2"H
ZCV42	44 5/8"W x 38 1/8"H	44 5/8"W x 40 1/8"H	40 1/8"W x 35 5/8"H

BENTLEY 42 PRODUCT SPECIFICATIONS

MODEL	ZCV42N ZCV42NE ZCV42NE2 [†]	ZCV42LP ZCV42LPE ZCV42LPE2 [†]	ZCV42NH ZCV42NHE ZCV42NHE2 [†]	ZCV42LPH ZCV42LPHE ZCV42LPHE2 [†]
Fuel	Natural Gas	Propane	Natural Gas	Propane
Gas Control	Millivolt / IPI	Millivolt / IPI	Millivolt / IPI	Millivolt / IPI
Input Max.	25,000 BTU	25,000 BTU	29,500 BTU	29,000 BTU
Input Min.	16,500 BTU	19,500 BTU	20,000 BTU	23,000 BTU
FE (P.4.1-15)	52.86% / 54.95%	52.86% / 54.95%	64.53% / 66.48%	66.65% / 68.77%
Glass Size	37 1/8"W x 31 3/4"H	37 1/8"W x 31 3/4"H	37 1/8"W x 31 3/4"H	37 1/8"W x 31 3/4"H
Venting	4"/7" Flex or 4" x 6 5/8" Hard Pipe* or Power Vent	4"/7" Flex or 4" x 6 5/8" Hard Pipe* or Power Vent	4"/7" Flex or 4" x 6 5/8" Hard Pipe* or Power Vent	4"/7" Flex or 4" x 6 5/8" Hard Pipe* or Power Vent

*Approved with Kingsman Flex Vent, MG DuraVent-Direct Vent Pro Direct Vent System, Amerivent Direct Vent Pipe System, Selkirk Direct-Temp Venting, ICC Excel Direct Vent, BDM Pro-Form Direct Vent and Metal Fab Sure-Seal DV Pipe System. This appliance is approved with Kingsman (PVH58) Horizontal Power Vent Termination.

ZCV42N, MQ42D Driftwood Log Set, ZCV42GT Glass Tray, ZCV42PL Porcelain Reflective Panel Liner, ZCV42S1BL Surround (Hearth Mount 4" Wide).



BENTLEY 48

Go BIG

When the view is this big, it must be the **Bentley 48**. This big brother of the popular Bentley by Marquis is getting some serious attention and lots of second looks from home owners wanting to enjoy a statement fireplace. An expansive glass viewing area and beautiful designer options allow you to customize the look to your own style. Take the chill out of the room with this heater-rated fireplace, and bask in some serious warmth.

Wow – we made you look, didn't we?

Visit www.marquisfireplaces.net to see the latest evolution in fireplaces.

Unit Illustrated: MQZCV48NE2 Zero Clearance Direct Vent Natural Gas Fireplace, MQLOGF48B Burnt Oak Log Set, ZCV48RLH Herringbone Brick Liner.





BENTLEY 48 PRODUCT SPECIFICATIONS

MODEL	MQZCV48N	MQZCV48LP	MQZCV48NE MQZCV48NE2	MQZCV48LPE MQZCV48LPE2
Fuel	Natural Gas	Propane	Natural Gas	Propane
Gas Control	Millivolt	Millivolt	IPI	IPI
Input Max.	42,500 BTU	42,250 BTU	42,500 BTU	42,250 BTU
Input Min.	28,500 BTU	34,000 BTU	28,500 BTU	34,000 BTU
FE (P.4.1-15)	52.24%	54.52%	53.37%	55.71%
Glass Size	41 1/2"W x 34 7/16"H	41 1/2"W x 34 7/16"H	41 1/2"W x 34 7/16"H	41 1/2"W x 34 7/16"H
Venting	5/8" Hard Pipe* or Power Vent	5/8" Hard Pipe* or Power Vent	5/8" Hard Pipe* or Power Vent	5/8" Hard Pipe* or Power Vent

**Approved with Kingsman Flex Vent, MG DuraVent-Direct Vent Pro Direct Vent System, Amerivent Direct Vent Pipe System, Selkirk Direct-Temp Venting, ICC Excel Direct Vent, BDM Pro-Form Direct Vent and Metal Fab Sure-Seal DV Pipe System. This appliance is approved with Kingsman (PVH58) Horizontal Power Vent Termination.*



Unit Illustrated: MQZCV48NE2 Zero Clearance Direct Vent Natural Gas Fireplace, MQLOGF48D Driftwood Log Set, MQZCV48GT Glass Tray, MQSTONE10 Decorative Stone (10 Piece Set), MQZCV48RLF Fluted Brick Liner.

MQZCV48NE2 Zero Clearance Direct Vent Natural Gas Fireplace, MQLOGF48B Burnt Oak Log Set, ZCV48RLH Herringbone Brick Liner, and MQ48DD1BL Designer Door (Series 1).

MQZCV48NE2 Zero Clearance Direct Vent Natural Gas Fireplace, MQZCV48GT Glass Tray, MQG5C Bronze Glass Media (x5), ZCV48PL Porcelain Liner.

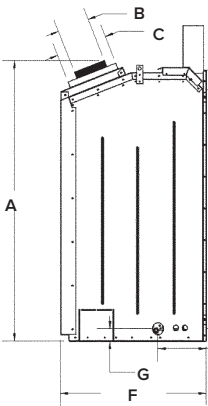
MQZCV48NE2 Zero Clearance Direct Vent Natural Gas Fireplace, MQLOGF48D Oak Log Set, ZCV48RLS Stacked Brick Liner, and MQ48DD3BL Designer Arch Door (Series 3).

BENTLEY 48

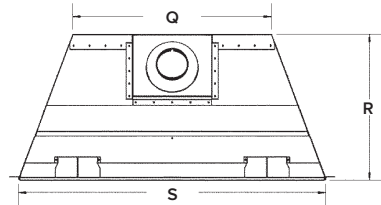
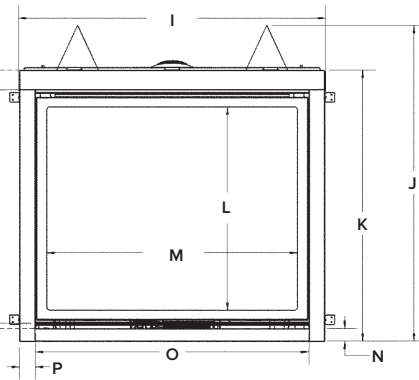
Unit Illustrated:
MQZCV48NE2 Zero Clearance
Direct Vent Natural Gas
Fireplace, MQLOGF48 Oak
Log Set, ZCV48RLT Traditional
Brick Liner, and MQ48DD2BL
Designer Door (Series 2).

BENTLEY 48 PRODUCT DIMENSIONS

SIDE VIEW



FRONT VIEW



TOP VIEW

ZCV48

- A 44 1/8"
- B 5"
- C 8"
- D 37 3/16"
- E 7 5/8"
- F 22 15/16"
- G 1 15/16"
- H 36 3/4"
- I 48 3/8"
- J 49 1 1/16"
- K 42 1 1/16"
- L 32"
- M 39 7/16"
- N 2"
- O 43"
- P 2 1/2"
- Q 31 5/16"
- R 23"
- S 48 3/8"

FRAMING DIMENSIONS

ZCV48

HEIGHT	
Actual	49 1 1/16"
Framing	49 3/4"
FRONT WIDTH	
Actual	48 3/8"
Framing	48 1/2"
DEPTH	
Actual	22 15/16"
Framing	24 3/16"***

SURROUNDS

HEARTH MOUNT (4" WIDE)

ZCV48 50 9/16"W x 43 3/16"H

**Dependent of finishing material used



Unit Illustrated: MQZCV48NE2 Zero Clearance Direct Vent
Natural Gas Fireplace, MQLOGF48D Driftwood Log Set,
MQZCV48GT Glass Tray, MQSTONE10 Decorative Stone
(10 Piece Set), MQZCV48RLF Fluted Brick Liner.

BENTLEY ACCESSORIES

BENTLEY 39-42 LOG SETS



MQ39D (4-Piece)
Driftwood Log Set
(Glass Tray Required)



MQ42D (6-Piece)
Driftwood Log Set
(Glass Tray Required)

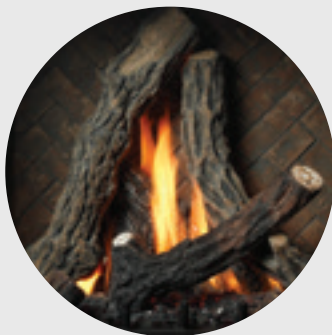


MQLOGF9 (10-Piece)
Split Oak Log Set



LOGF3 (5-Piece)
Split Oak Log Set

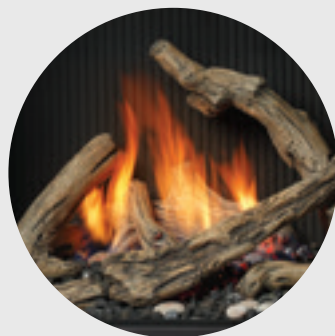
BENTLEY 48 LOG SETS



MQLOGF48
Split Oak Log Set

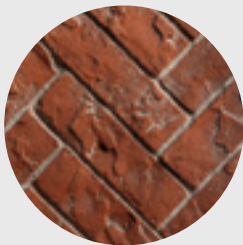


MQLOGF48B
Burnt Oak Log Set



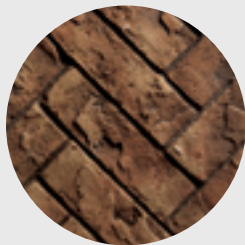
MQLOGF48D
Driftwood Log Set
(Glass Tray Required)

LINERS



Red
Herringbone
Brick Liner

39 / 42



Herringbone
Brick Liner

39 / 42 / 48



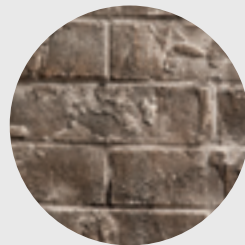
Stacked
Brick Liner

39 / 42 / 48



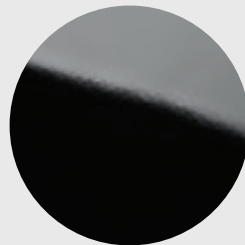
Fluted
Liner

39 / 42 / 48



Traditional
Brick Liner

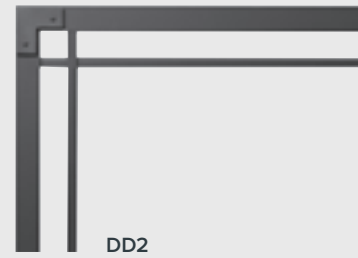
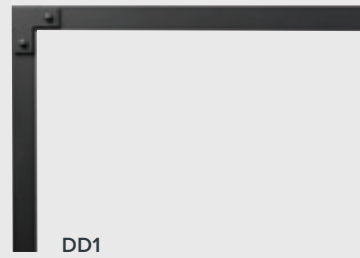
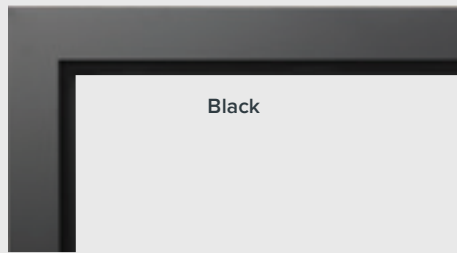
39 / 42 / 48



Porcelain
Reflective
Liner

39 / 42 / 48

WALL SURROUND



STONE MEDIA OPTIONS

(Glass Tray Required)



MQEMBER
Ember Chunks



MQSTONE
Decorative Stones



MQROCK2
Natural Rock Set



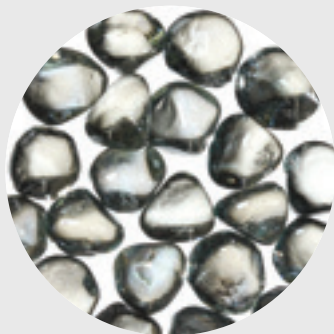
MQROCK3
Multi-Colored Rock Set



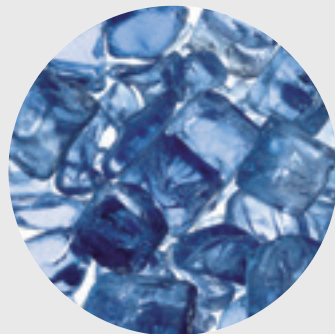
RBCB1
Multi-Colored Cannonballs

GLASS MEDIA OPTIONS

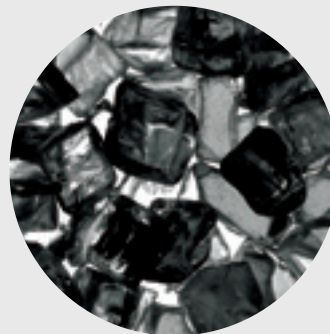
(Glass Tray Required)



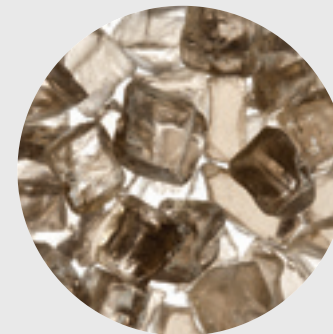
MQG5ZG
Zircon Glacier Ice Glass



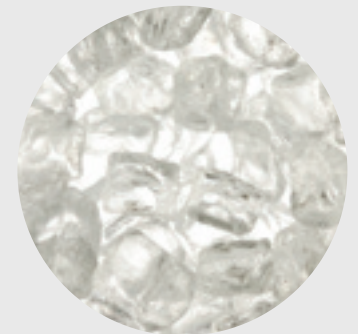
MQG5A
Cobalt Ember Glass



MQG5B
Black Ember Glass



MQG5C
Bronze Ember Glass



MQG5W
White Ember Glass



Unit Illustrated: ZCV39NE2 Zero Clearance Direct Vent Natural Gas Fireplace, MOZCV39GT Glass Tray, MOROCK3 Multi-Coloured Rocks, ZCV39PL Porcelain Liner



Marquis Fireplaces maintains a program of continuous testing, refinement and improvements of all its products. Some aspect of units shown here may be changed at any time without notice or obligation.

Certification: These Models are certified to ANSI Z21.88-2017 CSA 2.33-2017 Vented Gas Fireplace Heaters.

Note: Components may have to be ordered separately to create a complete unit. Discuss with your local Marquis Dealer for clarification.

Canada

ENERGUIDE

Look for the **EnergyGuide**
Gas Fireplace Energy
Efficiency Rating in this brochure

Based on CSA P.4.1-15



FOR CALIFORNIA RESIDENTS ONLY:
WARNING! This product can expose you to chemicals including Carbon Monoxide, that is an externally vented by-product of fuel consumption, which is [are] known to the State of California to cause birth defects or other reproductive harm. For more information, visit www.P65Warnings.ca.gov.

Crafted entirely in Canada, each Marquis fireplace is built to the highest standards and made to last.

LIMITED LIFETIME WARRANTY



2340 Logan Avenue
Winnipeg, Manitoba, CAN
R2R 2V3
Phone: 204.632.1962
Fax: 204.632.1960
marquisfireplaces.net

Printed in Canada
B106 - 02/2020

ZCV42

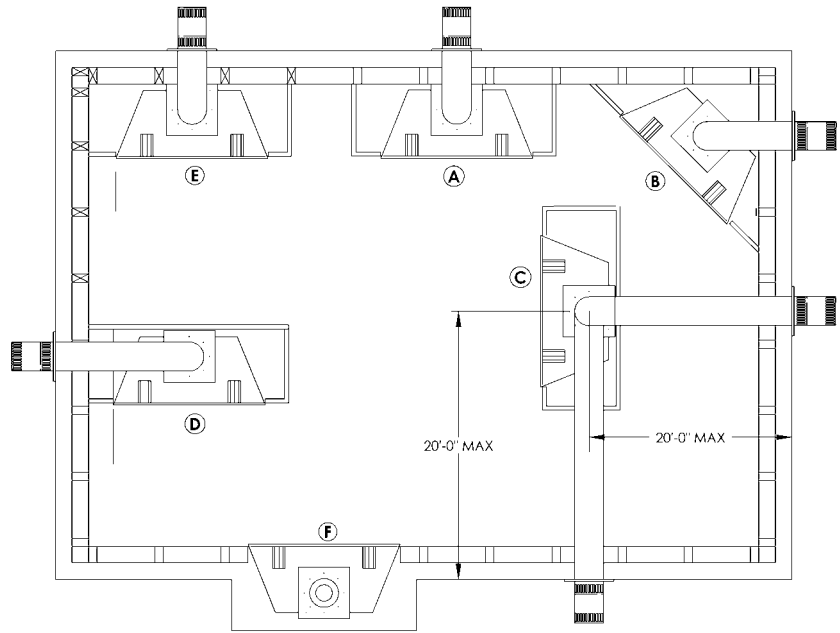
Locating Your Appliance

LOCATION KEY:

- A. Flat on Wall
- B. Across the Corner
- C. As an Island
- D. As a Room Divider
- E. Flat on Wall Corner
- F. Exterior Wall

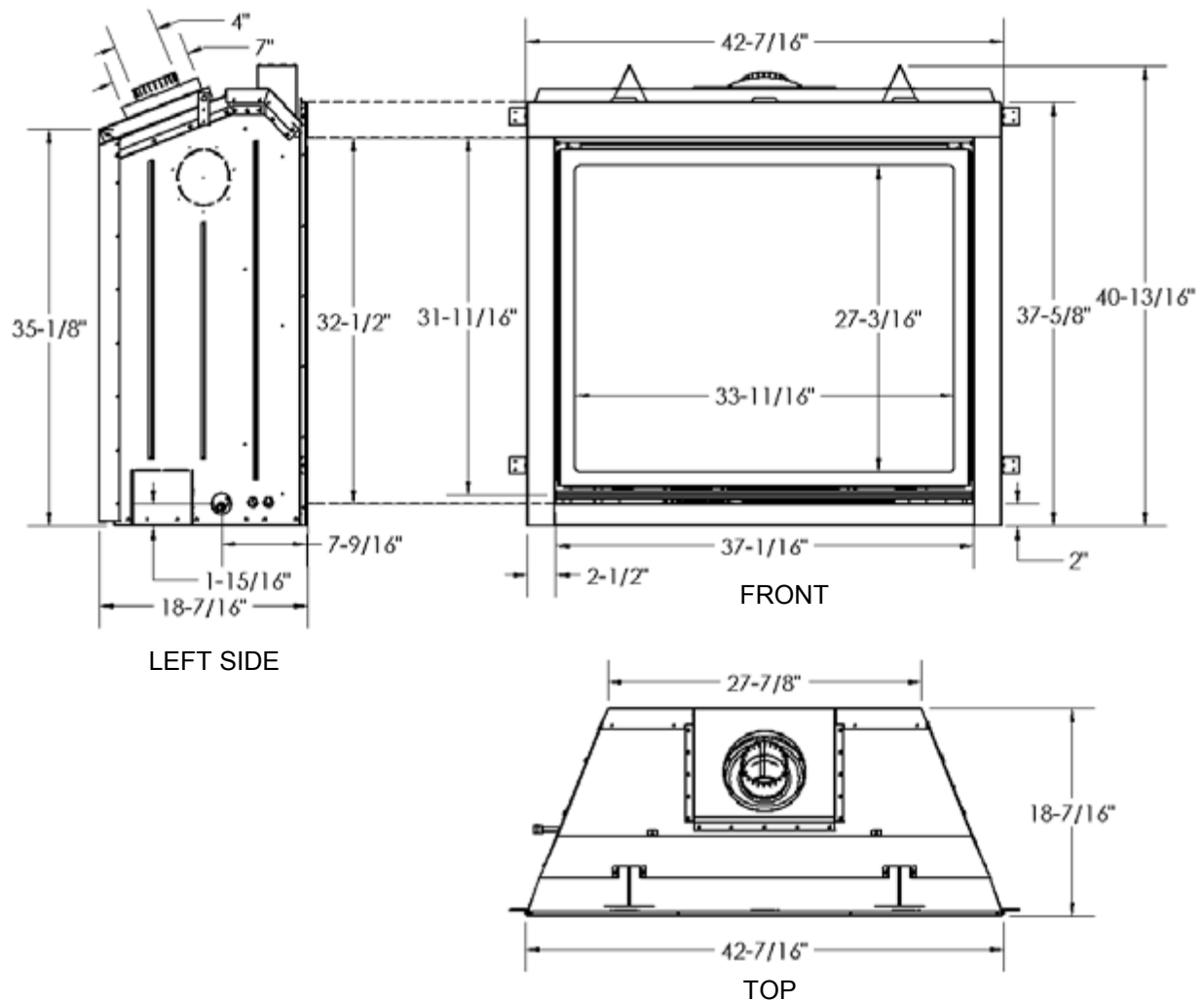
See Mantel Leg Clearances Instruction for the proper placement of fireplace.

Island installation with a top vent is possible as long as the horizontal portion of the vent system does not exceed 20 feet (6.1 m).



ZCV42

Fireplace Dimensions



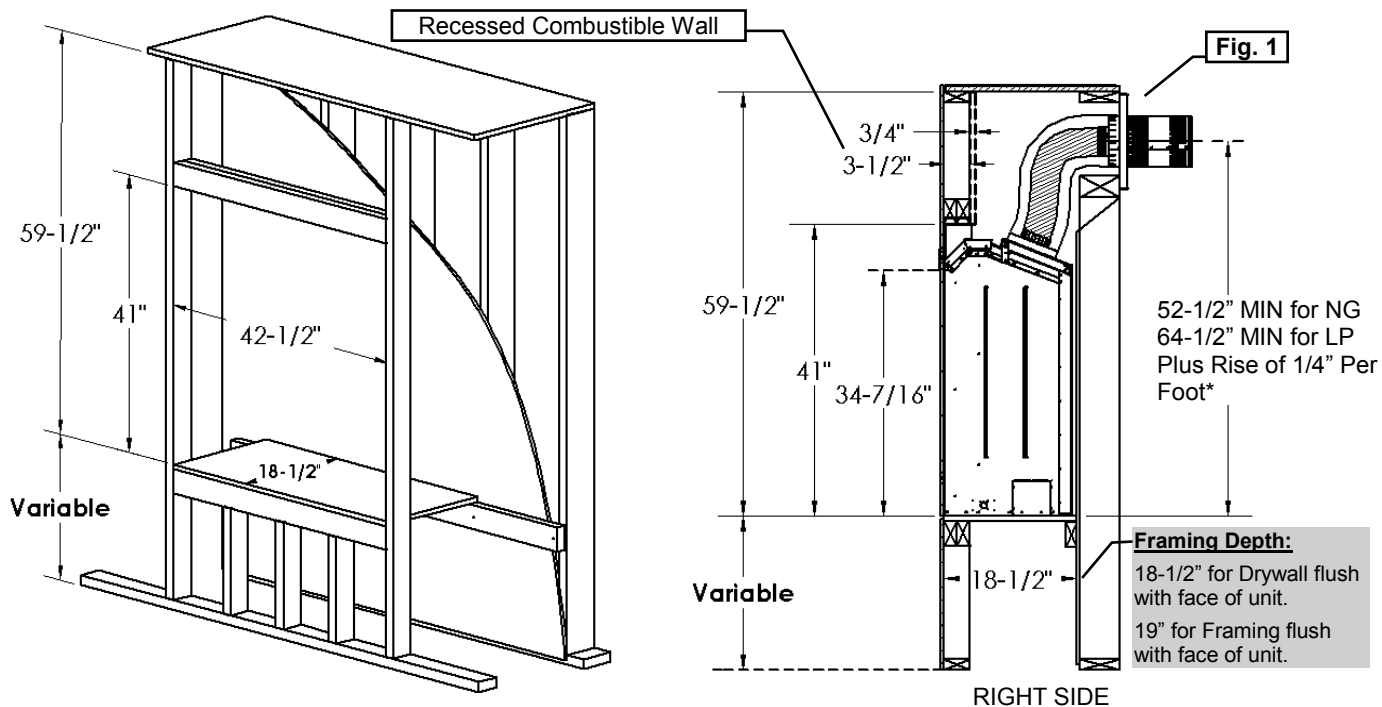
ZCV42

Framing Dimensions

Determine whether face of fireplace will be:

- Flush with finished wall (e.g., for surround, cultured stone or other non combustible covering).
- Flush with framing (to be covered with concrete board for a Flat Wall appearance).

Refer to Nailing Tab Guide section also. **These structures are not load bearing.**



***For Propane Horizontal installations the venting must be an additional one foot above the minimum vertical rise off the flue before going horizontal.**

Vertical Venting MUST maintain 1" clearance to combustibles.

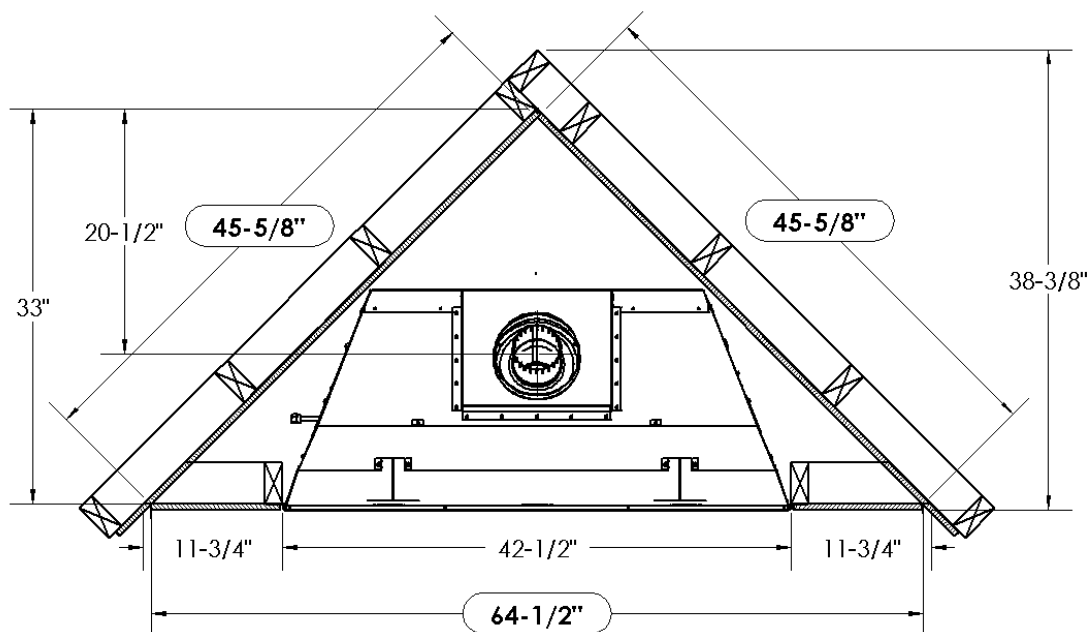
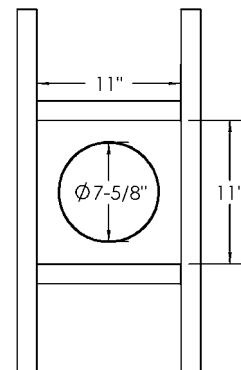
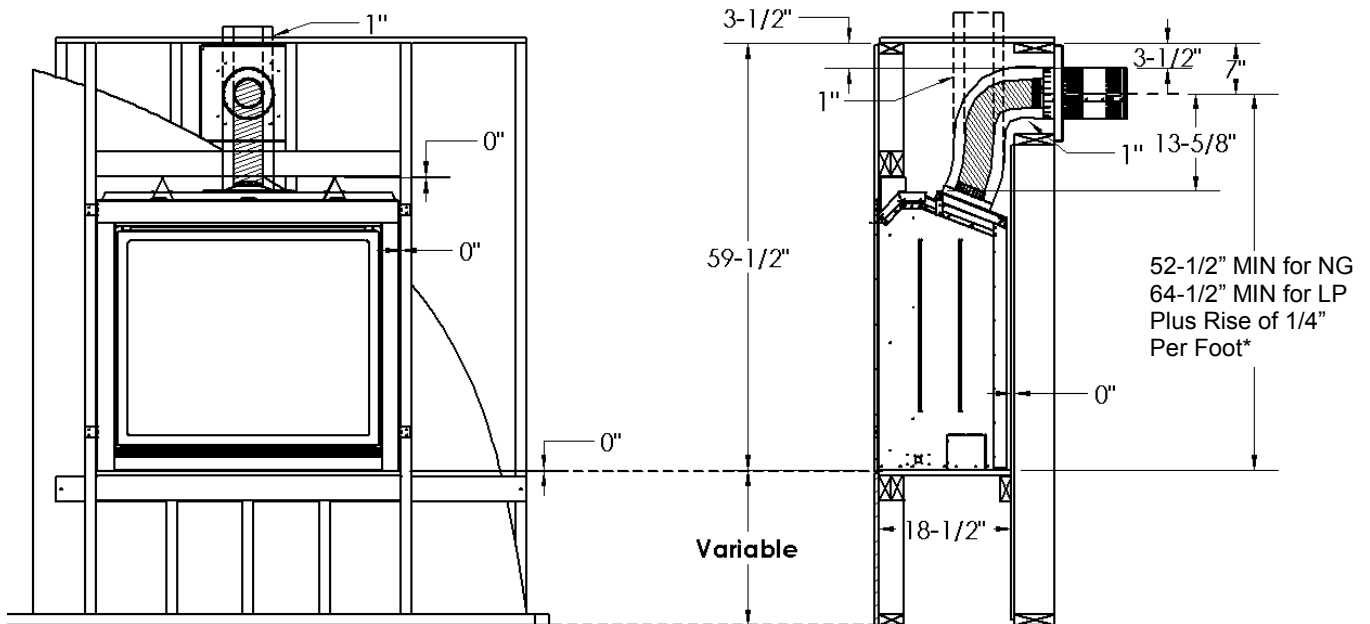


Fig.1
Framing for Horizontal Vent Termination
(See Installation of Side Wall Venting Section)



ZCV42 Clearance to Combustibles

Clearance to Combustibles ZCV42	
Front	36" [92cm]
Back (from Stand-offs)	0" [0cm]
Side (from Stand-offs)	0" [0cm]
Floor*	0" [0cm]
Minimum Ceiling Height (from bottom of fireplace)	59.5" [151cm]
Top (from Stand-offs)	0" [0cm]
Top of 90° Bend in minimum Enclosure of 59.5"	3-1/2" [8.9]
Top of 90° Bend in Enclosure over 59.5"	3-1/2" [8.9]
VENTING SYSTEMS	
Top of Horizontal Pipe	1-1/2" [3.8cm]
Side & Bottom of Horizontal Pipe	1" [2.5cm] All Vent Systems
Vertical Vent Pipe	1" [2.5cm] All Vent Systems



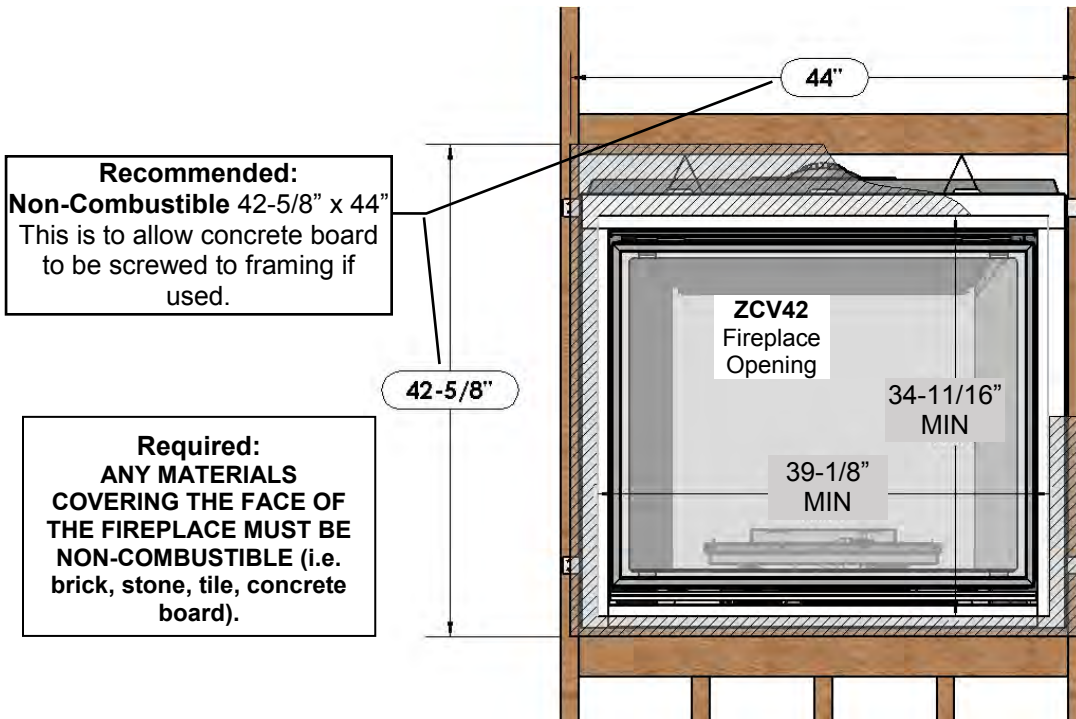
*Note: If appliance is installed directly on carpeting or other combustible material other than wood flooring, a metal or wood panel extending the full width and depth of the appliance must be used. Carpet may extend 1 inch above the floor of the appliance.

ZCV42 Facing Requirements

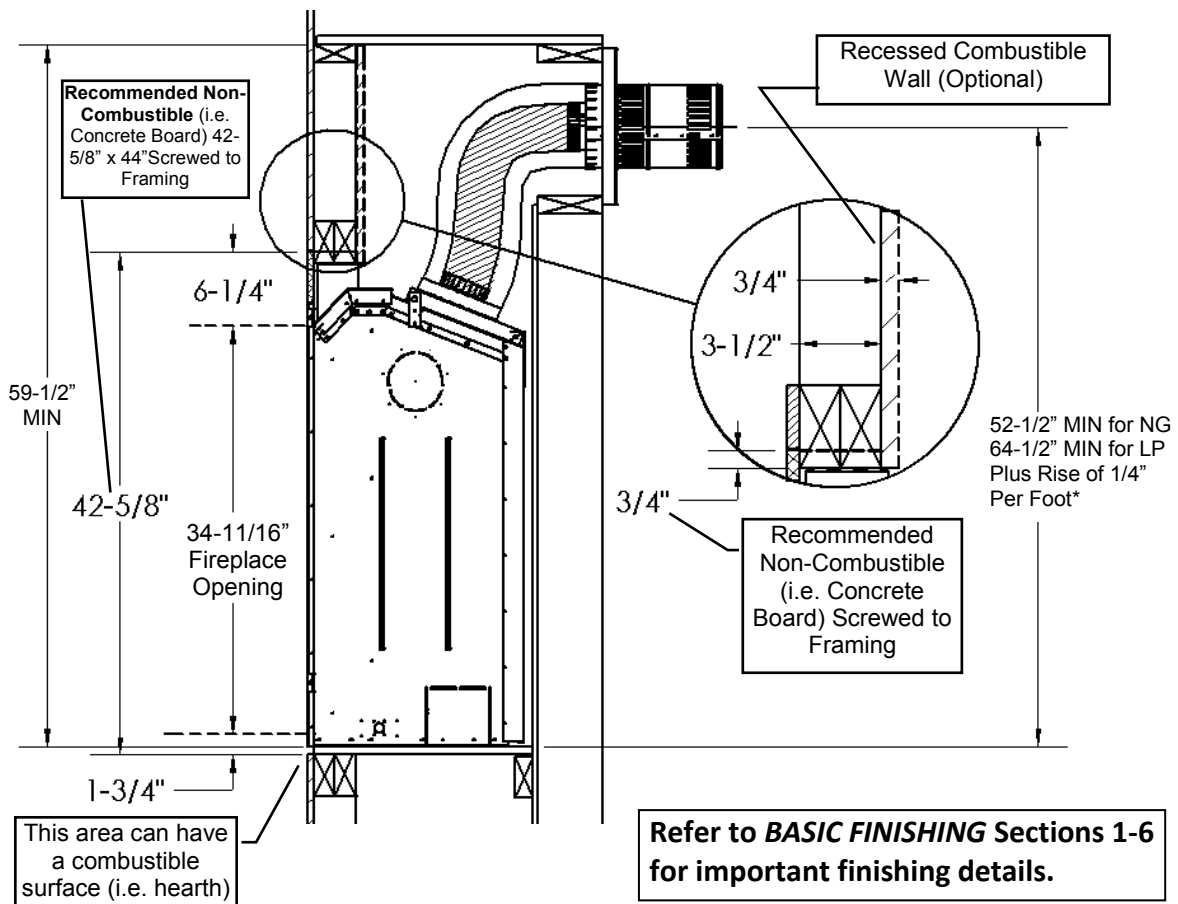
Required Non-Combustible Areas

FIREPLACE WITH SCREEN ONLY (AS SHIPPED) SHOWN HERE.

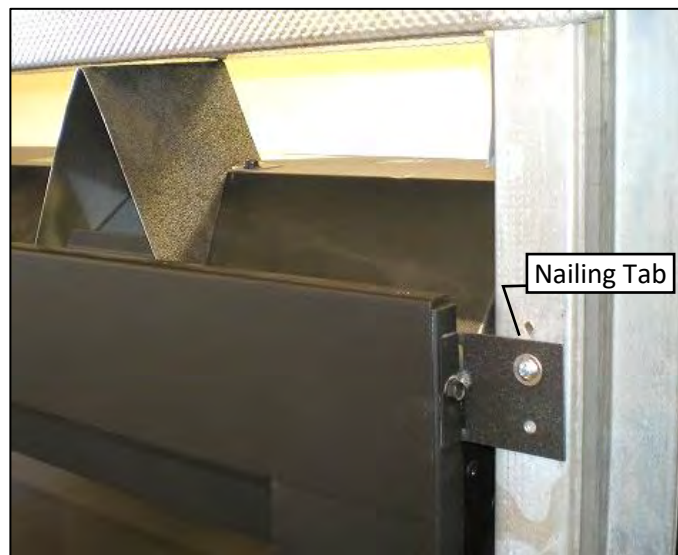
Refer to **BASIC FINISHING** Sections 1-6 for important finishing details.



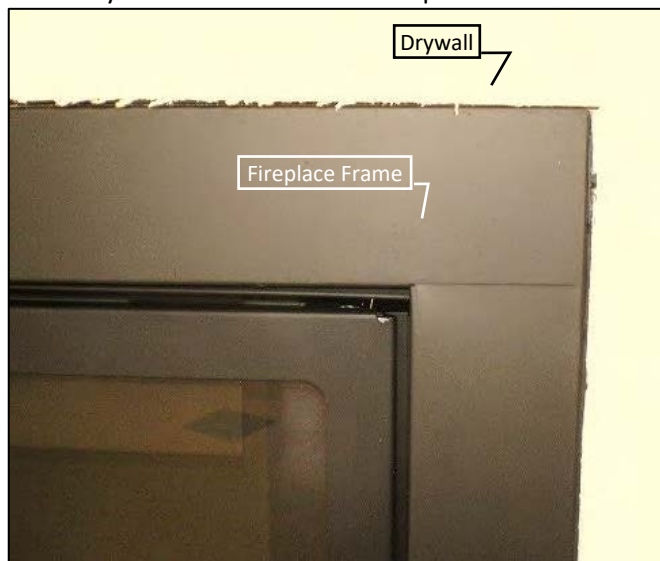
Note: Do not drive excessively long screws into the face of the unit as internal parts may be damaged.



Step One: Frame Fireplace with nailing tabs oriented as shown.



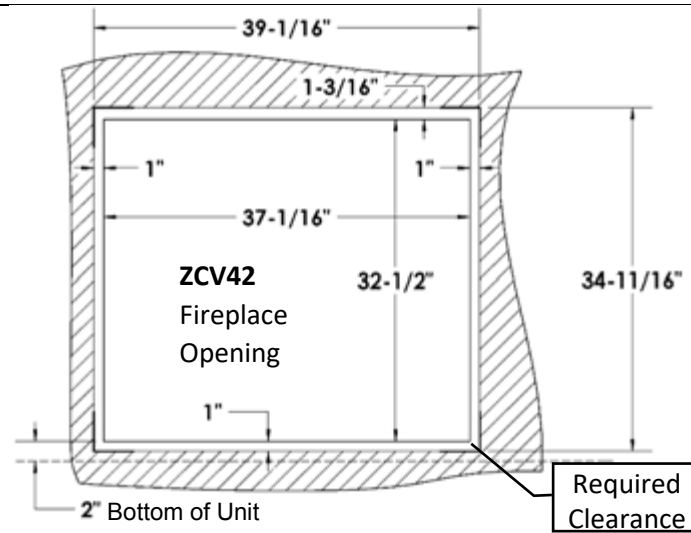
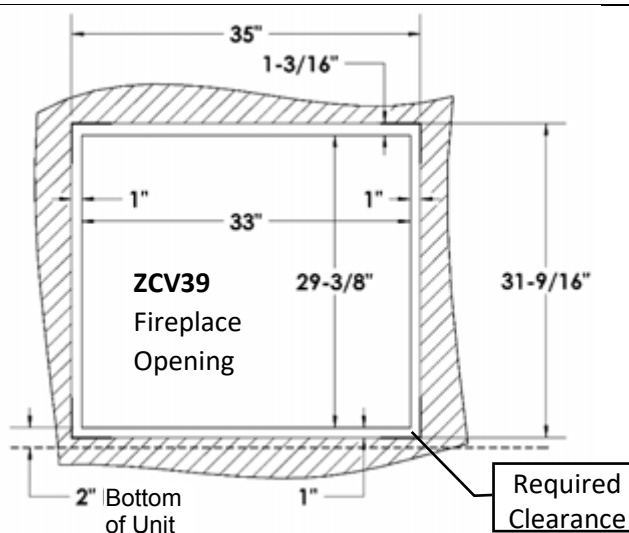
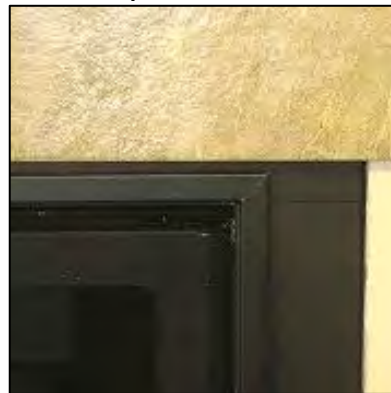
Step Two: Use Drywall to finish face of wall.
NOTE: Drywall will be flush with fireplace face.



Step 3: A brick, tile, or other non-combustible border may be applied over fireplace face to conceal border.



IMPORTANT NOTE!: If installing tile, brick, or other non-combustible material around the perimeter of the screen: you **MUST** Leave 1" of the face exposed around the fireplace opening on the Bottom and Sides, and 1-3/16" exposed on the top. This is to install and remove the safety screen. See drawings below. **A Tile Lip Kit is Available. Part No. ZCV-TLK**



BI-50-DEEP Electric Fireplace – Indoor / Outdoor

 amantii.com/product/bi-50-deep-electric-fireplace-indoor-outdoor/

Description

50" Deep Electric Fireplace Built-in only with black steel surround

50" wide and 12" deep – The BI-50-DEEP and the Panorama Series of built-in electric fireplaces have been designed to give you the maximum in flexibility in selecting a fireplace that perfectly suits your needs.

The stylish electric fireplace will be a focal point in any room, indoor or outdoor.

Panorama fireplaces are rated for Indoor or Outdoor use.

Full Frame Viewing Area

The Panorama Series give you multiple length and depth options as well as giving you the ability to install your fireplace with your choice of finishing material built right to the glass for a "clean face" design or using the provided black metal surround. ***Your choice – your design!***

A Kaleidoscope of colour

Featuring the vibrant Fire & Ice flame set, with just a click of your remote you can easily change the flame colour from blue to purple to violet to orange or yellow.

Note: Deep models come with the ICE media set and an 11 piece log set.

KEY FEATURES

FIRE & ICE® Flame

Presentation – Three light strips allow for yellow, orange, blue, violet & rose colored flames

Illuminate decorative media like never before with ambient canopy lighting in 13 colors

Heater & Fan

Flame operates with or without heat

Deep 12" comes with large glass chunks, clear & blue diamond fire glass media, an 11 piece log set, and black steel surround that can be installed if preferred

Perfect for zone heating approx.
400-500 sq ft.
4800 BTU

Thermostat hard-wire ready
Electrical hard-wire ready

FIRE & ICE® flame presentation

Vibrant multi-colored state-of-the-art FIRE & ICE® flame that is easily changed from blue to purple to rose to violet to orange or yellow with just a click of the remote. Three color strips generate more flame options that ever.

Ambient Canopy Lighting

Ambient canopy lighting illuminates media like never before. Cast a colorful glow over the supplied decorative media in the tray below. Cycle through a rainbow of 13 different colors. Blend flame colors with contrasting canopy lighting for a unique presentation – the combinations are limitless.

Log set with canopy lighting off and then on in red

INCLUDED ACCESSORIES

The BI-50-DEEP comes standard with large glass chunks, clear & blue diamond fire glass media, an 11 piece log set, as well as a black steel surround and a remote.

PANCOVER

Required for outdoor use. Additional purchase required.

OPTIONAL ACCESSORIES

Customize the look of your electric fireplace by purchasing from our selection of stylish decorative media.

LOOKING FOR A DIFFERENT SIZE?

[BI-40-DEEP](#) | [BI-50-DEEP](#) | [BI-60-DEEP](#) | [BI-72-DEEP](#) | [BI-88-DEEP](#)

Installation Support Center

View technical specification drawings, preview or download the most current manuals, brochures and repair guides.

[Manual](#) [Specifications](#) [Repair Guide](#) [Brochures](#) [FAQ's](#) [Technical Support](#)

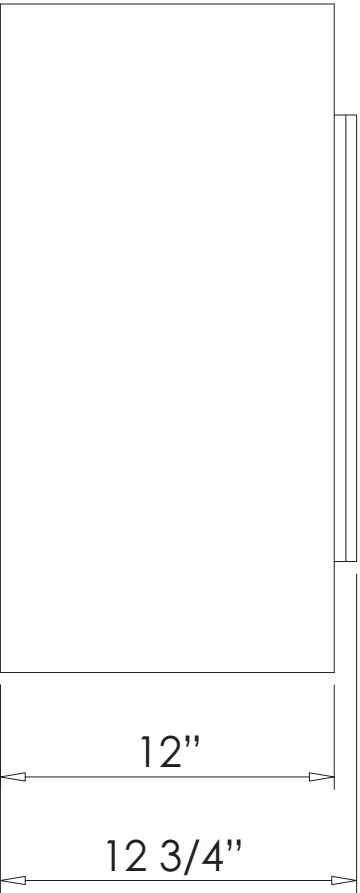
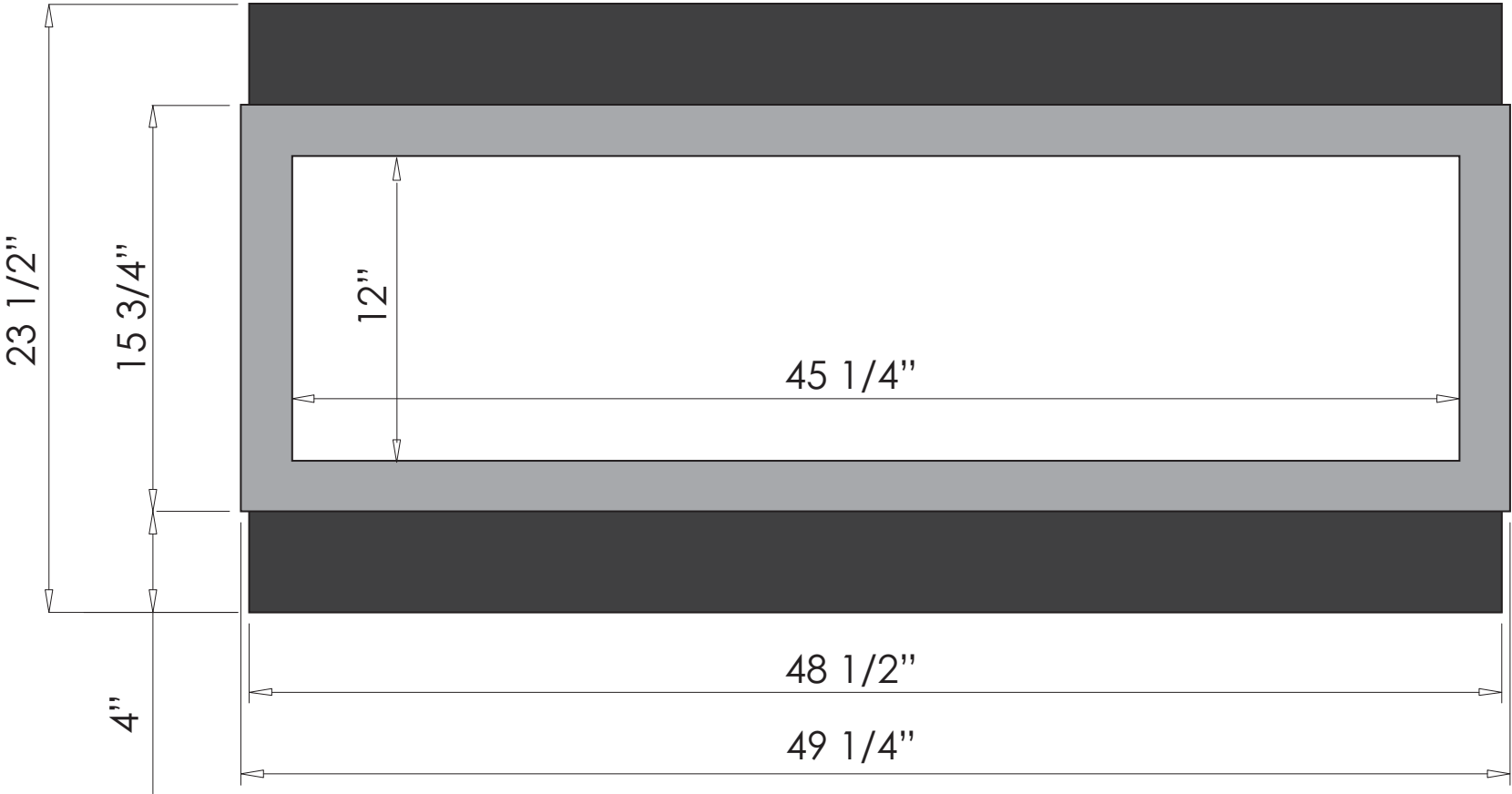
WARNING:

This product can expose you to chemicals including lead, that is found in some copper fittings, which is [are] know to the State of California to cause birth defects or other reproductive harm. For more information, visit www.P65Warnings.ca.gov More on California Proposition 65 – [CLICK HERE](#)

DISCLAIMER


Flames and flame colors on the website may appear differently in real life. To view the most accurate representation of the FIRE & ICE® flame and our regular flame sets, please visit your nearest dealer.

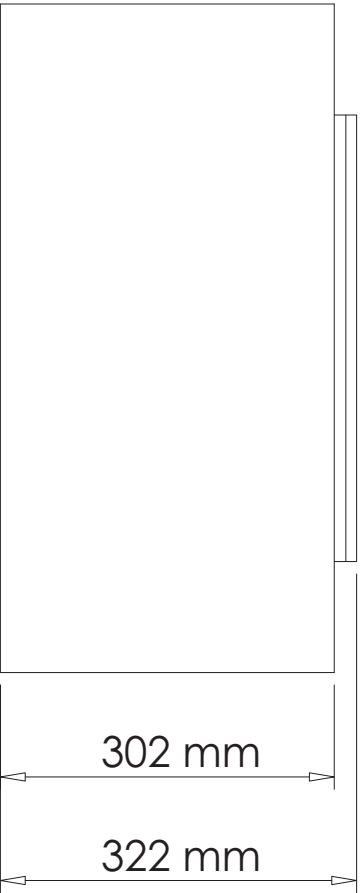
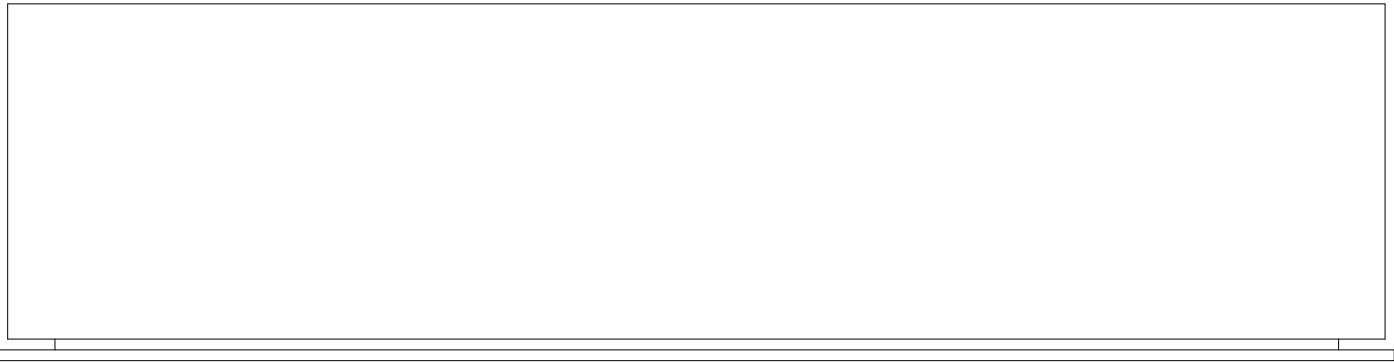
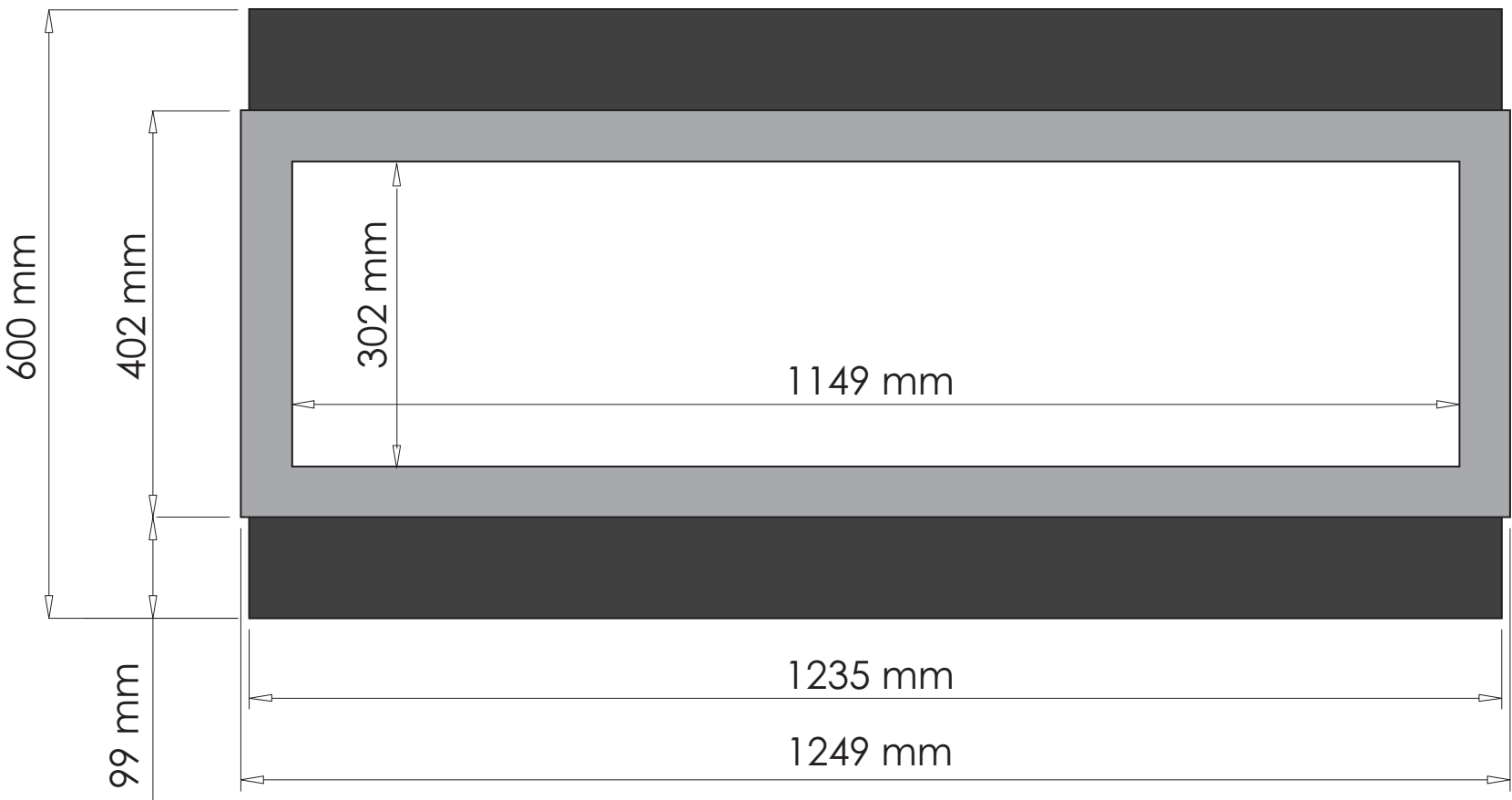
We reserve the right to update products, specifications and dimensions are subject to change. Please refer to the product manual to verify measurements and clearance requirements. All local building codes must be followed.



TECHNICAL SPECIFICATIONS		
VOLTS		120
AMPS		12.5
WATTS		1500
HEATER	HIGH	1500 watts
	LOW	750 watts
NO HEATER		22 watts
LAMPS	QUANTITY	LED
	WATTS	
	TOTAL WATTS	22 watts
ROTOR MOTOR		1 at 5 watts
HEIGHT, WIDTH, DEPTH		23 1/2 x 48 1/2 x 12
GLASS VIEWING OPENING		12" x 45 1/4"
SURROUND SIZE		15 3/4" x 49 1/4"
SHIPPING SIZE		25 3/4 x 58 x 14 1/2"
SHIPPING WEIGHT		111 lbs
	UNIT	
	GLASS FRONT	Included
PLUG LOCATION		Left Side
CORD LENGTH		76"
APPROX. HEATING AREA		400 sq ft



SERIES	MODEL		REV
BUILT IN	BI-50-DEEP		1
SCALE 1" = 1'-0"	DATE: 11/1/2013	SHEET 1 OF 1	



TECHNICAL SPECIFICATIONS	
VOLTS	120
AMPS	12.5
WATTS	1500
HEATER	HIGH 1500 watts
	LOW 750 watts
NO HEATER	22 watts
LAMPS	QUANTITY LED
	WATTS
	TOTAL WATTS 22 watts
ROTOR MOTOR	1 at 5 watts
HEIGHT, WIDTH, DEPTH	60 x 123.5 x 30.2 cm
GLASS VIEWING OPENING	30.2 x 114.9 cm
SURROUND SIZE	40.1 x 124.9 cm
SHIPPING SIZE	64 x 146.3 x 36.8 cm
SHIPPING WEIGHT	50 kg
	UNIT
	GLASS FRONT Included
PLUG LOCATION	Left Side
CORD LENGTH	193 cm
APPROX. HEATING AREA	37 sqm



SERIES BUILT IN	MODEL BI-50-DEEP		REV 1
SCALE 1:12	DATE: 11/1/2013		SHEET 1 OF 1



INSTALLATION AND OPERATION INSTRUCTIONS FOR BI-DEEP UNITS

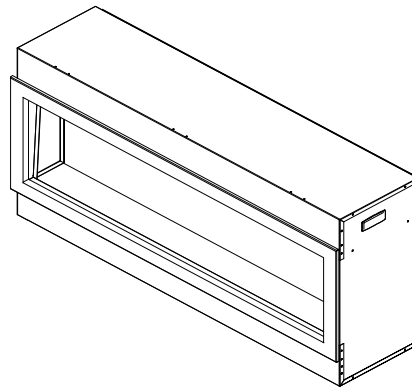
BI-40-DEEP

BI-50-DEEP

BI-60-DEEP

BI-72-DEEP

BI-88-DEEP



SAFETY INFORMATION



WARNING

If the information in these instructions are not followed exactly, a fire or explosion may result causing property damage, personal injury or loss of life.

Do not store or use gasoline or other flammable vapors and liquids in the vicinity of this or any other appliance.

INSTALLER: LEAVE THIS MANUAL WITH THE APPLIANCE.

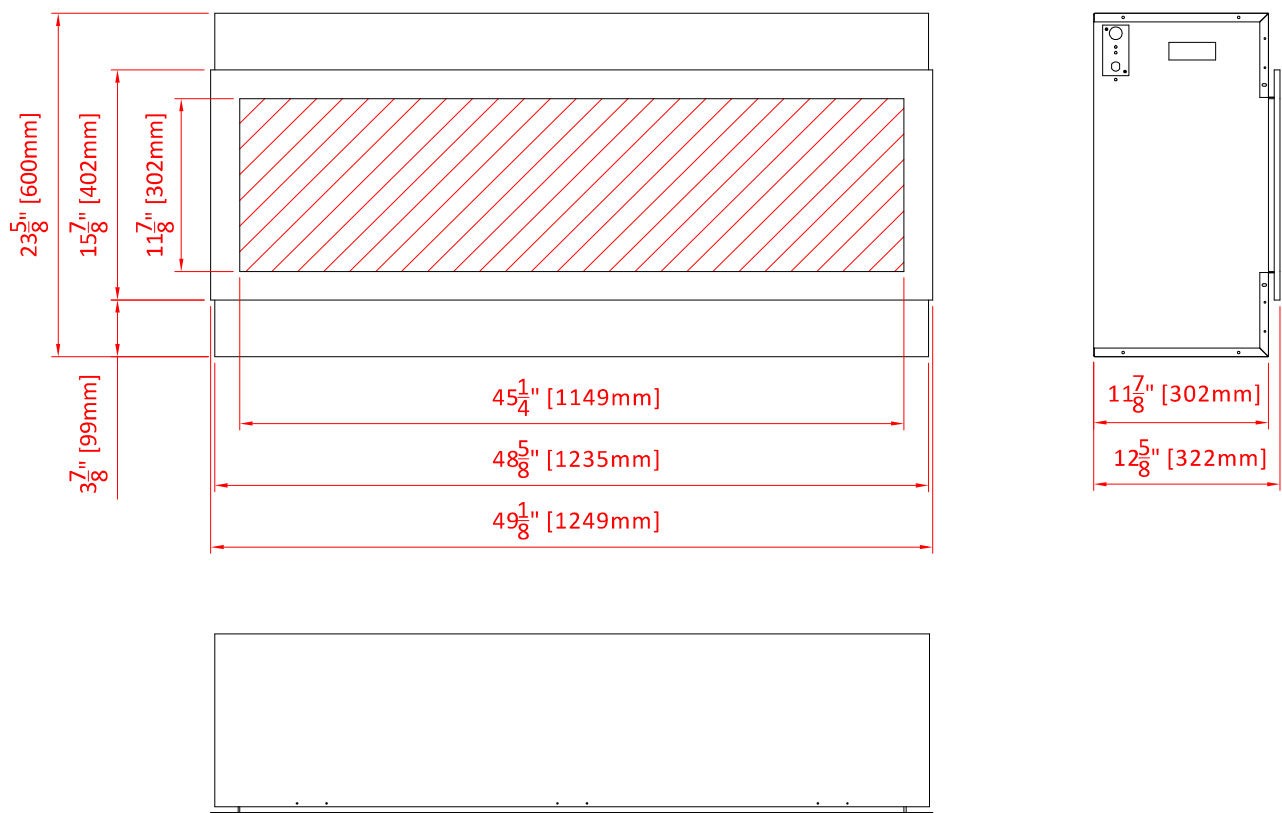
CONSUMER: RETAIN THIS MANUAL FOR FUTURE REFERENCE.

BI-50-DEEP

Model Number	BI-50-DEEP
Voltage	120V AC 60Hz
Watts	1500W Max
NO HEATER	25W
MOTOR HEATER	19W
Appliance Width	48 5/8" or 123.5 cm
Appliance Height	23 5/8" or 60 cm
Appliance Depth	12 5/8" or 32.2 cm
Gross Weight	110lbs or 50kg
Plug Location	Left side
Cord Length	70 7/8" or 180 cm
Rough Wall Opening Size	50" × 25" or 127 cm × 63.5 cm
BTU	4800

This appliance has been tested in accordance with the UL Standard 2021 for fixed and location dedicated electric room appliances in the United States and Canada. If you need assistance during installation, please contact your local dealer.

NOTE: This appliance must be electrically wired and grounded in accordance with local codes. In the absence of local codes, use the current CSA C22.1 Canadian Electrical Code in Canada or the ANSI/NFPA 70 National Electrical Code in the United States.



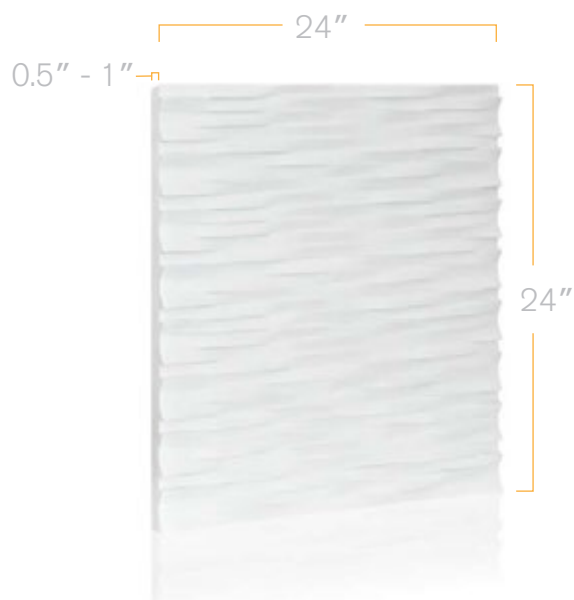


LACUNO ART™
LACUNO ART™

Panel Art for Living Spaces.

LA - 16

Size: 24" x 24"



www.lacunoart.com

39 Haist Avenue, Unit 1 Woodbridge ON L4L 5V5

T: 905.850.0542 ▪ F: 905.850.7659 ▪ E: info@lacunoart.com



IgniteXL®

60" Linear Electric Fireplace

XLF60

Designed to ignite
your passion.



IgniteXL® stands apart as more lifelike and visually stunning than anything that came before it. With new, patented flame and heat technology, IgniteXL transforms the look and feel of any room. Installation is simpler and more flexible than ever, making the possibilities almost endless. Enjoy flawless panoramic views that ignite the senses from any angle.

IGNITE XL®

IgniteXL® 60" Linear Electric Fireplace

XLF60



Color Themes



Accessories



74" Driftwood and River Rock Accessory Package (LF74DWS-KIT)



60" IgniteXL Trim Kit (XLFTRIM60)
Allows installation of IgniteXL in 2"x4" wall construction.
62-3/4" x 18-1/4" x 1-7/8"
(159.4 cm x 46.2 cm x 4.5 cm)

120 Volts | 1,500 Watts | 5,118 BTU
240 Volts | 2,500 Watts | 8,530 BTU

Model #	Description	Lbs / Kg	UPC	Wty ¹	Carton Dimensions (WxHxD)		Cube	
					Inches	cm	ft ³	m ³
XLF60	60" IgniteXL Linear Electric Fireplace	86.79 / 39.37	781052 118478	5 yr.	68-3/8 x 24-1/4 x 15	173.7 x 61.6 x 38.1	14.4	0.4
LF74DWS-KIT	74" Driftwood and River Rock Accessory Kit	9.8 / 4.44	781052 102859		34-1/4 x 7-1/8 x 8-1/8	87.2 x 18.03 x 20.57	1.12	0.03
XLFTRIM60	60" IgniteXL Linear Electric Fireplace Trim Kit	8.85 / 4.01	781052 120075	1 yr	66-3/4 x 3-5/8 x 6-7/8	169.4 x 9.3 x 17.5	0.97	0.03

Specifications, finishes and dimensions are subject to change. ¹Limited warranty. ©2020 Glen Dimplex Americas

Features

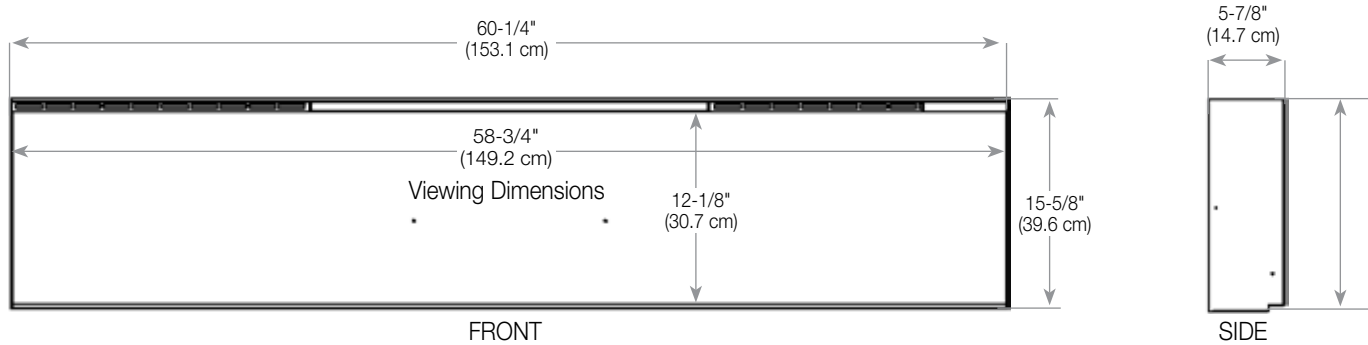
- Multi-Fire XD® Flame Effect**
Vivid flames that are brighter and more lifelike day or night.
- Less Frame, More Flame**
Clean front face with minimal trim makes the dazzling flames the focal point.
- ComfortSaver® Heating System**
Safe ceramic heat, plus 11% energy savings, warms up to 1,000 sq. ft.
- Heat Disable**
Disable the heater operation using the remote control or electrically inside the unit.
- Media Accent Colors**
Choose from a variety of brilliant color themes or cycle through a range of colors using the custom mode, freezing on the hue of your choice.
- Edgeless Design**
Installs without trim to stone, brick and other solid finish materials; includes trim for drywall and tile surfaces.
- Precision Thermostat**
Electronic thermostat maintains room temperature within 1/2°C (1°F) for perfect comfort and increased energy efficiency.
- Built-in Touch Controls**
Settings and temperature display are hidden when not in use.
- Heat Boost**
Quickly warms a room by delivering maximum heat output for a pre-determined amount of time.
- Mood-maker Remote**
Customize the light color and intensity for a fireplace that reflects your personality.
- Seamless Installation**
Low-profile design fully recesses in 2" x 6" wall construction and 2" x 4" with optional trim.
- Hardwire or Plug-in**
Includes 120V plug-in cord kit or hardwire to 120V / 240V power supply.
- Cool-touch Glass**
Glass remains cool making it safe for children and pets in any location.

SE-337-R062-022420

IgniteXL® 60" Linear Electric Fireplace

XLF60

Product Dimensions:

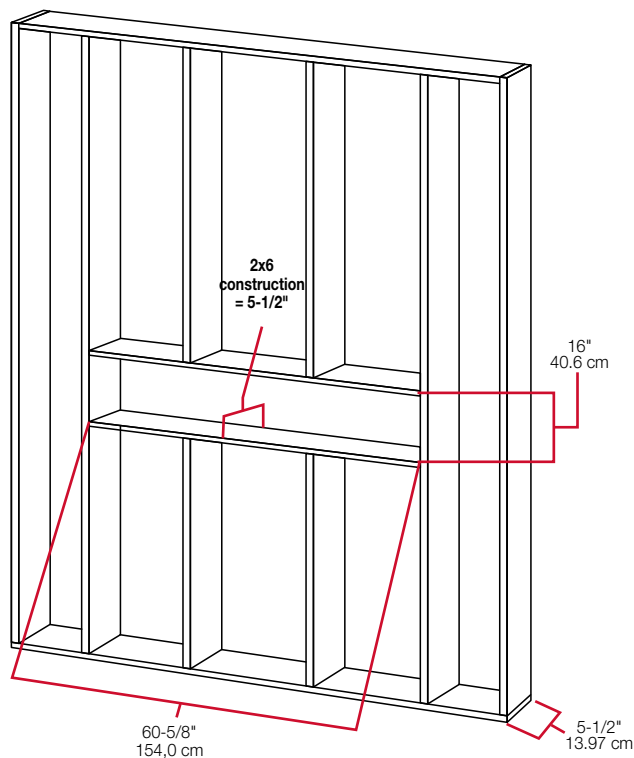


Framing Dimensions

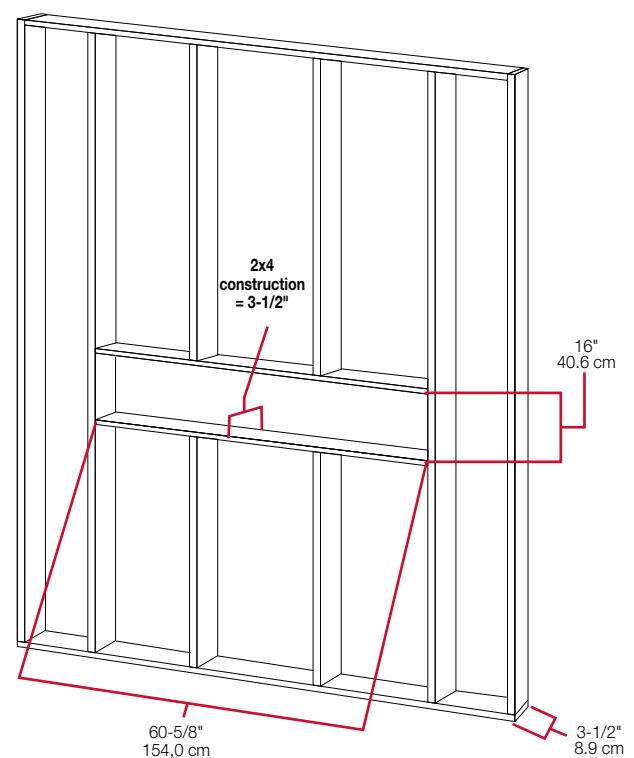
NOTE: The bottom sill needs to be a minimum of 3-1/2" (8.9 cm) deep. The sill can be constructed to support the front of the unit to allow the power supply wires to easily be run behind or flush with the back of the unit and a pass through hole drilled for electrical wire routing.

It is recommended that the bottom of the unit be mounted between 30" (76.2 cm) and 40" (102 cm) from the ground to maintain an optimized viewing angle of the flame.

2x6 framing



2x4 framing

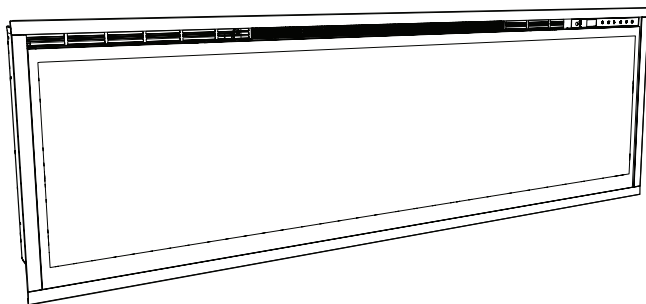




Better solutions through innovation

Owner's Manual

Model
XLF60



IMPORTANT SAFETY INFORMATION: Always read this manual first before attempting to install or use this fireplace. For your safety, always comply with all warnings and safety instructions contained in this manual to prevent personal injury or property damage.

To view the full line of Dimplex products, please visit
www.dimplex.com

7215520100R00



Quick Reference Guide

1. The electrical information regarding your electric fireplac can be found on the rating label located on the top of the unit.

Please use our convenient online registration page to record your model and serial numbers for future reference at:

www.dimplex.com/register

2. If you have any technical questions or concerns regarding the operation of your electric fireplace, or require servic contact customer service at 1-888-346-7539.
3. For dimensions of your fireplace, refer to Figure 1

Figure 1

