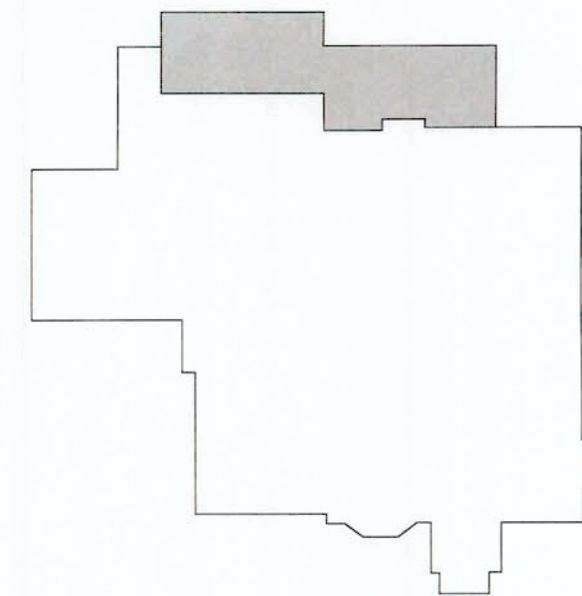


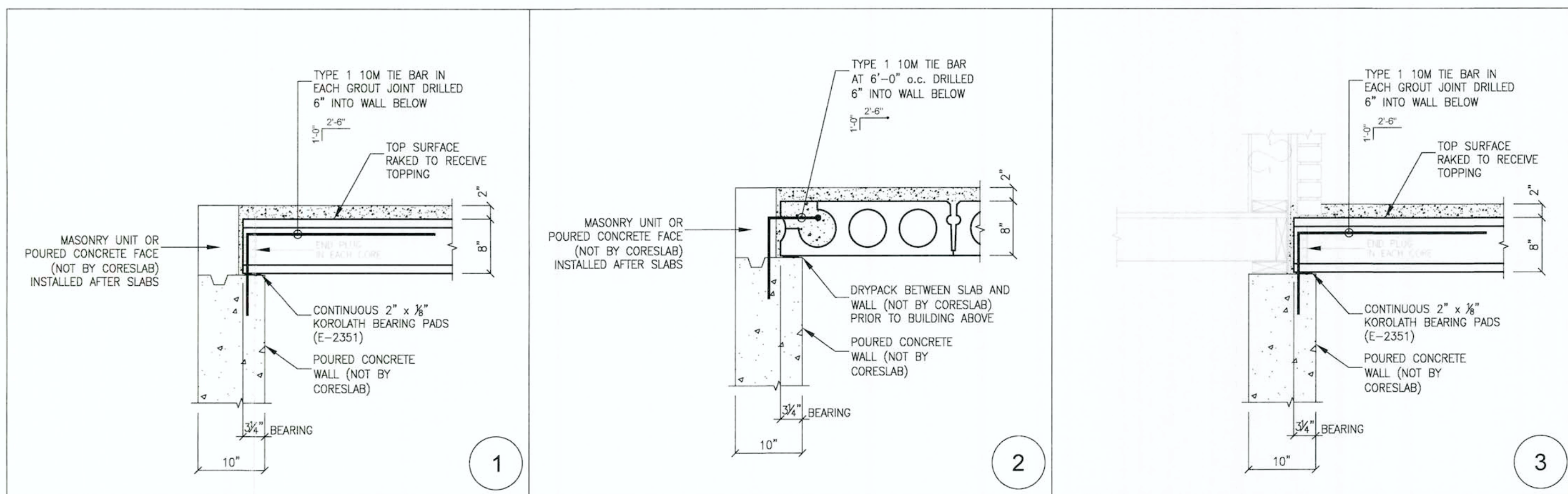
**NOTE:**  
OPENINGS LESS THAN 150mmØ  
ARE NOT SHOWN AND MUST BE  
LOCATED AND SPACED TO AVOID  
CUTTING STRAND.



**KEY PLAN**

**MAIN FLOOR PLAN**

LEVEL 1



**SECTIONS**

**THE USE OF FORKLIFTS  
ON THE PRECAST DECK(S)  
DURING CONSTRUCTION  
IS PROHIBITED BY  
CORESLAB STRUCTURES**

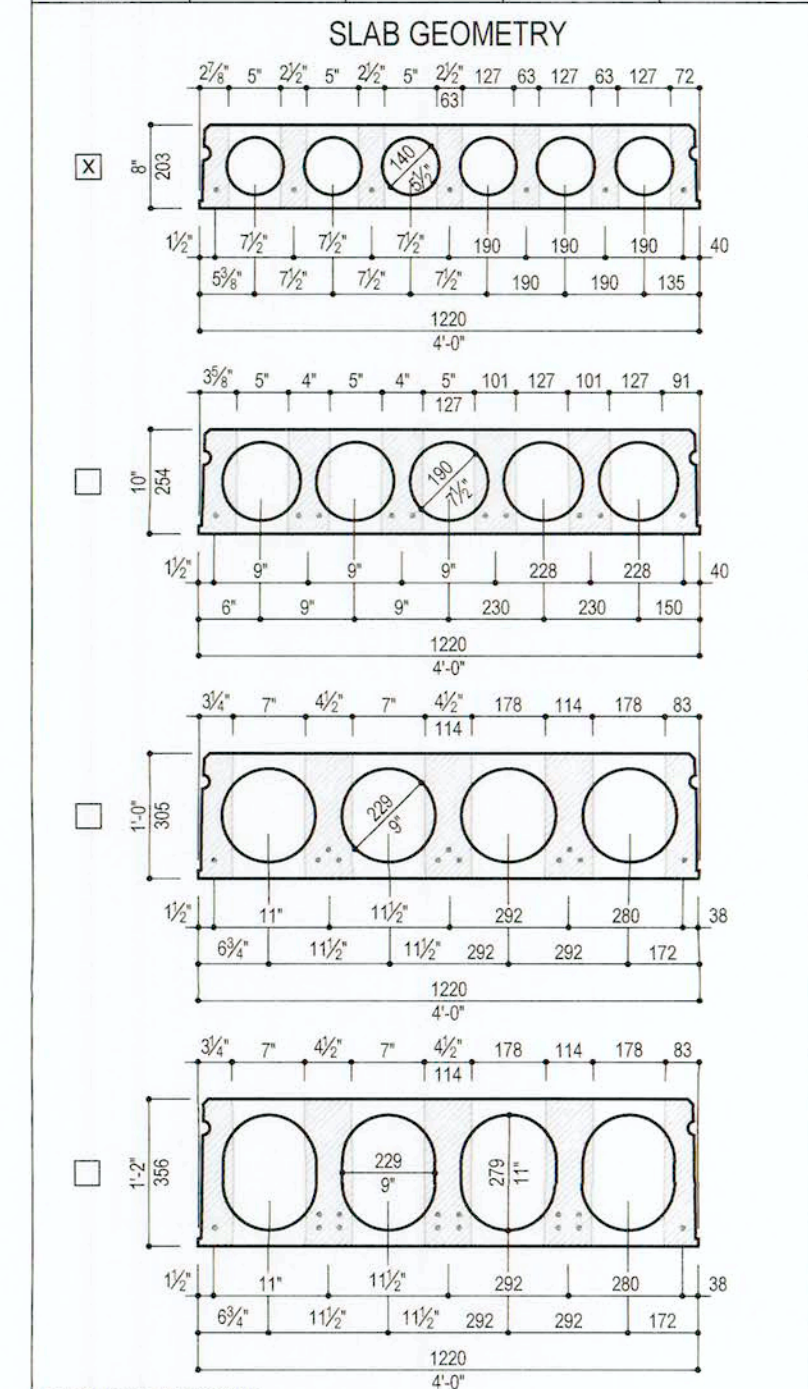
**REVIEW FOR FABRICATION**  
The General Contractor is required to ensure that all information requested on the shop drawings, (dimensions, details, openings, etc.) has been verified / provided.

Coreslab will only manufacture precast once all information requested on the drawings has been obtained and the General Contractor has indicated that the shop drawings have been "Reviewed" or "Reviewed as Noted".

Reviewed	Proceed with Fabrication (Send final production drawings)
Reviewed as Noted	Incorporate Comments and Proceed with Fabrication (Send final production drawings)
Revise & Resubmit	Incorporate Comments and Release for Review (DO NOT proceed with fabrication)

Signature: \_\_\_\_\_ Date: \_\_\_\_\_

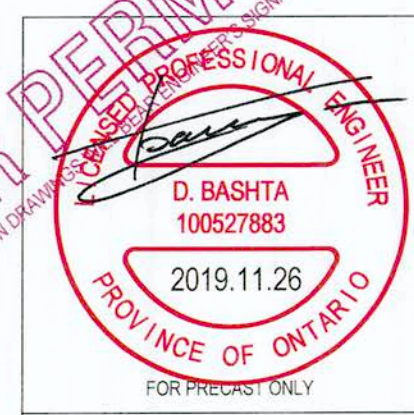
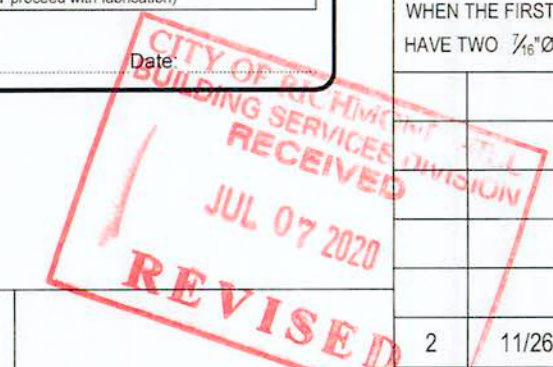
ITEM	INVENTORY			
	SUPPLIED		INSTALLED	
	OTHERS	CORESLAB	OTHERS	CORESLAB
HOLLOWCORE		✓		✓
SOLID SLABS		N/A		
BALCONIES		N/A		
LANDINGS		N/A		
STAIRS		N/A		
TIE STEEL		✓		✓
POINTING AND CAULKING		N/A		
BEARING PADS		KOROLATH		✓
GROUTING		✓		✓
PLUMB/MECH. OPENINGS		6" DIA MAX		
FLOOR FINISHING		N/A		
HANGERS & MISC. STEEL		N/A		



**PENETRATIONS:**  
OPENINGS 6" (152mm) AND LARGER MUST BE SHOWN ON PLAN  
OPENINGS SHOWN ON PLAN ARE ROUGH OPENING SIZES  
OPENINGS 5" (127mm) AND SMALLER NEED NOT BE SHOWN ON PLAN  
PROVIDED THEY DO NOT OCCUR WITHIN THE SHADED PORTIONS (SEE ABOVE).  
SLAB GEOMETRY (ABOVE) MUST BE REFERENCED TO CO-ORDINATE  
LOCATIONS AND SPACING OF OPENINGS TO AVOID SEVERING STRAND.  
APPROVAL MUST BE OBTAINED FROM CORESLAB ENGINEER WHEN:  
• MORE THAN TWO (2) OPENINGS OCCUR ACROSS SLAB AT ONE LOCATION  
• OPENINGS ARE LARGER THAN 5" (127mm)  
• WEBS/STRAND MUST BE CUT TO ACCOMMODATE OPENINGS  
• OPENINGS AND ADDITIONAL FORCES FROM ABOVE (EG. MASONRY PARTITION)  
OCCUR WITHIN THE FIRST 1/5 OF SLAB LENGTH MEASURED FROM BEARING ENDS

- GENERAL NOTES**
1. CONCRETE STRENGTH = 4000 PSI (28 MPa) MIN. @ TRANSFER
  2. CONCRETE STRENGTH = 6000 PSI (41 MPa) MIN. @ 28 DAYS
  3. FIRE RATING = 2 HOUR (CBC 2012: 88-2 CLAUSE 2.2.1) (UNO)
  4. WEIGHT = 18" @ 62 PSF (10" @ 74 PSF) (12" @ 88 PSF) (14" @ 96 PSF)
  5. DO NOT SCALE SHOP DRAWINGS
  6. CONTRACTOR TO VERIFY ALL DIMENSIONS AND DETAILS
  7. SUPPLEMENTAL SUPPORT MUST BE PROVIDED (NOT BY CORESLAB) AT LOCATIONS WHERE SLABS MUST BE TRIMMED AROUND COLUMNS. MOMENT CONNECTIONS, BRACING CONNECTIONS & OTHER SUCH INTERFERENCES THAT COMPROMISE SLAB BEARING (TYPICAL)
  8. GROUTING OF PRECAST SLAB GROUT KEYS ONLY. (U.N.)
  9. POINTING OF EXPOSED SLABS ONLY.
  10. CAULKING OF EXPOSED LONGITUDINAL JOINTS ONLY. (U.N.)
  11. PRECAST BALCONY SLAB JOINTS ARE NOT FEATHERED.
  12. PRECAST BALCONIES WILL RECEIVE STANDARD BROOM FINISH FOR TOP (U.N.)
  13. ALL DRYPACKING AND SOLID TOP COURSES BY OTHERS.
  14. DIMENSION TOLERANCES AS PER CLAUSE 12 OF A23.4
  15. FORMATION OF ICE INSIDE CORES DUE TO WATER INFILTRATION MAY CAUSE DAMAGE TO SLABS. THE GENERAL CONTRACTOR IS RESPONSIBLE FOR KEEPING THE CORES OF SLABS FREE OF WATER & ICE AT ALL TIMES.
  16. MANUFACTURED FINISH: ☐ STANDARD ☒ RAKED ☐ ROOF

**SLAB IDENTIFICATION & REINFORCEMENT**  
THE FIRST NUMERAL OF A SLABS MARK NUMBER REPRESENTS THE QUANTITY OF 1/2"Ø STRAND IN THE BOTTOM OF THE SLAB (EG. .001 = SIX STRAND & .1003 = TEN STRAND). THE REMAINING DIGITS ARE FOR IDENTIFICATION AND ARE NUMBERED SEQUENTIALLY. WHEN THE FIRST NUMERAL IS PRECEDED WITH AN "H", THAT INDICATES THE SLAB WILL HAVE ONE 1/2"Ø TOP STRAND FOR HANDLING PURPOSES (UNO). WHEN THE FIRST NUMERAL IS PRECEDED WITH A "T", THAT INDICATES THE SLAB WILL HAVE TWO 1/2"Ø TOP STRAND FOR CANTILEVER PURPOSES (UNO).



**SUPERIMPOSED LOADS**

FLOOR:	L.L.: = 50 PSF	D.L.: = 100 PSF
CORRIDOR:	L.L.: =	D.L.: =
ROOF:	L.L.: =	D.L.: =
	L.L.: =	D.L.: =
	L.L.: =	D.L.: =

PLUS ANY ADDITIONAL LOADS SHOWN ON THIS DRAWING

REV	DATE	REVISION
2	11/26/19	ISSUED FOR PERMIT
1	OCT 23, 2019	ISSUED FOR REVIEW

**CORESLAB TOTAL PRECAST.**  
205 Coreslab Drive, Dundas, Ontario, L9H 0B3  
PHONE: (905) 688-3993 FAX: (905) 688-0708

**QA**  
CPOA CERTIFIED PLANT

PROJECT: AVIGNON 3  
ADDRESS: 18 DENHAM DRIVE, RICHMOND HILL, ON  
TITLE: MAIN FLOOR PLAN  
CONTRACTOR: GREENPARK GROUP  
DRAWN: GBM  
CHECKED: \_\_\_\_\_  
SCALE: N.D.T.S.  
DATE: OCT. 22, 2019

DRAWING No.: **E.1.1**  
PROJECT No.: **19-895**  
OF: