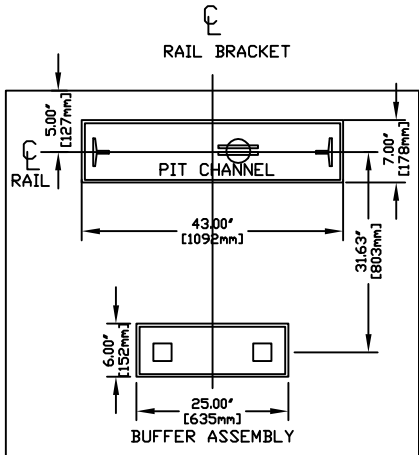
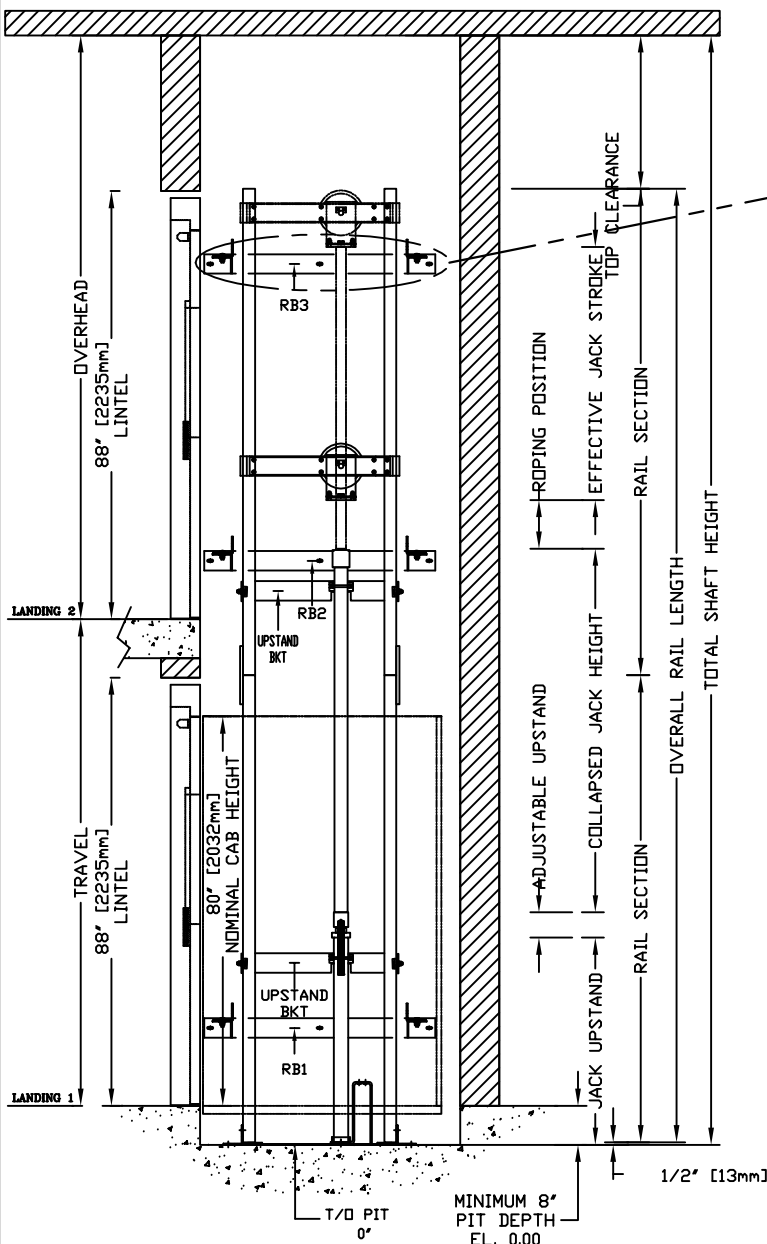


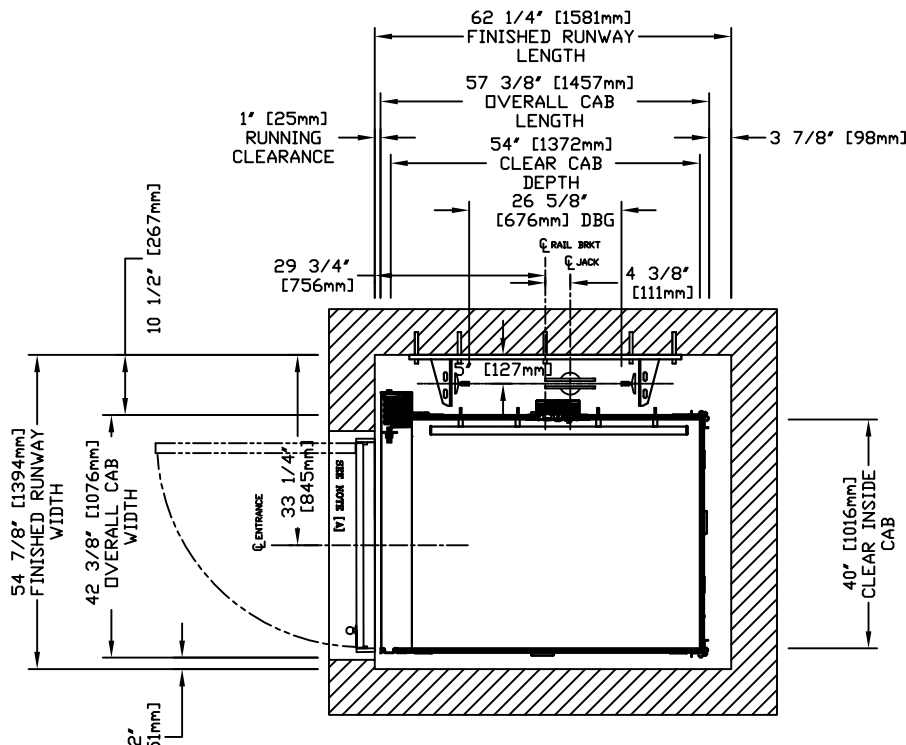
SECTIONAL VIEW -INFINITY Model 4054 TYPE 1L



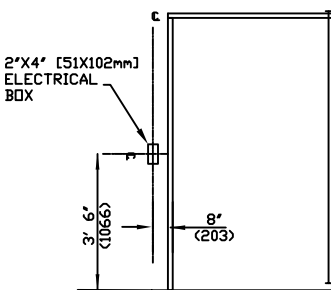
| RAIL FORCES | | R3 NOTE: |
|----------------------------|----------|---|
| | | PIT FLOOR TO SUPPORT LOAD OF: 5.6Klbs * (INCLUDES IMPACT) |
| *R1 | *R2 | FOR TOTAL PULL-OUT FORCE ON RAIL BRACKET, R1 MUST BE DOUBLED eg. |
| 304lb.f. | 194lb.f. | |
| RAIL WEIGHT : 8.0 lbs / ft | | |

RAIL BRACKET

PLAN VIEW - INFINITY Model 4054 TYPE 1L



NOTE [A]: PER ASME A17.1 AND CAN/CSA B44 RULE 5.3.1.7.2
THE CLEARANCE BETWEEN THE HOISTWAY DOORS OR GATES AND
THE HOISTWAY EDGE OF THE LANDING SILL SHALL NOT EXCEED
3 in. (75 mm). THE DISTANCE BETWEEN THE HOISTWAY FACE OF
THE LANDING DOOR OR GATE AND THE CAR DOOR OR GATE SHALL
NOT EXCEED 5 in. (125 mm).



HALL FIXTURE LOCATION
LEFT HAND AS SHOWN
RIGHT HAND OPPOSITE
1. HALL BUTTON AT ALL FLOORS RIGHT HAND SWING

PROVISIONS BY OTHERS

***GENERAL**
HOISTWAY- THE HOISTWAY MUST BE IN ACCORDANCE WITH
"SAFETY CODE FOR ELEVATORS" (B44 SECTION 5.3), "SAFETY CODE
FOR ELEVATORS AND ESCALATORS" (ASME A17.1) AND ALL
STATE/PROVINCIAL AND LOCAL CODES.

PLUMB HOISTWAY- DUE TO CLOSE RUNNING CLEARANCES OWNER/AGENT
MUST ENSURE THAT HOISTWAY AND PIT (WHERE PROVIDED) ARE
LEVEL, PLUMB AND SQUARE AND ARE IN ACCORDANCE WITH THE
DIMENSIONS ON THESE DRAWINGS.

MINIMUM OVERHEAD CLEARANCE- OWNER/AGENT MUST ENSURE MINIMUM
OVERHEAD CLEARANCE IS IN COMPLIANCE WITH CODES.

CONSTRUCTION SITE- OWNER/AGENT TO PROVIDE ALL MASONRY,
CARPENTRY AND DRYWALL WORK AS REQUIRED AND SHALL PATCH AND
MAKE GOOD (INCLUDING FINISH PAINTING) ALL AREAS WHERE
WALLS/FLOORS MAY REQUIRE TO BE CUT, DRILLED OR ALTERED IN
ANY WAY TO PERMIT THE PROPER INSTALLATION OF THE LIFT.

DIMENSIONS
CONTRACTOR/CUSTOMER TO VERIFY ALL DIMENSIONS AND REPORT ANY
DISCREPANCIES TO OUR OFFICE IMMEDIATELY.

***STRUCTURAL**
FLOOR/SUPPORT WALL LOADS- STRUCTURAL ENGINEER TO ASSURE
THAT BUILDING AND SHAFT WILL SAFELY SUPPORT ALL LOADS
IMPOSED BY THE LIFT EQUIPMENT. REFER TO THE TABLES ON THIS
DRAWING FOR LOADS IMPOSED BY THE EQUIPMENT.

WHERE DOORS ARE REQUIRED- SUITABLE LINTELS MUST BE PROVIDED
BY OWNER/AGENT. DOOR FRAMES ARE NOT DESIGNED TO SUPPORT
OVERHEAD WALL LOADS.

***MACHINE ROOM**
LOCATION / ACCESS- MACHINE ROOM LOCATED AT THE LOWEST
LEVEL ADJACENT TO HOISTWAY, UNLESS SHOWN OTHERWISE ON THE
LAYOUT DRAWINGS. FIELD ADJUSTMENT BY INSTALLER MAY BE
NECESSARY TO MEET JOB SITE CONDITIONS OR REGULATIONS. ACCESS
TO MACHINE ROOM TO BE THROUGH A SELF CLOSING LOCKING DOOR.

SLEEVES FOR OIL & ELECTRIC LINES- FROM MACHINE ROOM TO
RUNWAY AS REQUIRED. (POSITION PER INSTALLERS INSTRUCTIONS).

| | INPUT VOLTAGE (V/PH/CYCLE) | DISCONNECT SIZE (AMPS) | TIME DELAY FUSE (AMPS) | FULL LOAD CURRENT (AMPS) |
|------------|-------------------------------|---------------------------|---------------------------|-----------------------------|
| MOTOR INFO | | 30 | 20 | 10.6 |
| CAB LIGHTS | 115/1PH | 60 | 30 | 17.0 |

***ELECTRICAL**
POWER SUPPLY- (SEE SPECIFICATIONS) LOCKABLE FUSED DISCONNECT
WITH AUXILIARY CONTACT TO BREAK THE BATTERY FEED, OR CIRCUIT
BREAKERS WITH A 3-POLE BREAKER FOR BATTERY FEED REQUIRED,
IN COMPLIANCE WITH ELECTRICAL CODE, AS FOLLOWS:
(LOCATED ON WALL ON LOCK JAMB SIDE OF MACHINE ROOM DOOR)
PERMANENT POWER- BEFORE INSTALLATION CAN BEGIN, PERMANENT
POWER MUST BE SUPPLIED.
LIGHTING- OWNER/AGENT TO ENSURE AT LEAST 5 FTC OR 54 LUX
AMBIENT LIGHTING OVER LIFT AREA.

***ENTRANCES**
FASCIA PANEL BELOW UPPER LEVEL ENTRANCE- WHERE REQUIRED,
FASCIA PANEL MUST BE FASTENED TO A SOLID WALL AND BE
PERPENDICULAR TO THE FLOOR AND WALLS. HOISTWAY
FASCIA IS NOT SELF-SUPPORTING FOR LONG, CONTINUOUS
RUNS VOID OF ENTRANCES. ADEQUATE SUPPORT FOR THE
FASCIA MUST BE PROVIDED.
ENTRANCE ASSEMBLIES- ENTRANCE ASSEMBLIES MUST BE ADJUSTED
TO ALIGN WITH PLATFORM AND INTERLOCK EQUIPMENT. OTHERS TO
ALLOW AN ADEQUATE ROUGH OPENING.
RETURN WALLS- RETURN WALLS AT ENTRANCES MUST BE BUILT-IN
BY OTHERS AFTER ENTRANCE ASSEMBLIES ARE IN PLACE. ENTRANCE
ASSEMBLY MUST BE SECURELY FASTENED TO WALLS BY ELEVATOR
CONTRACTOR.

NOTE B
ALL INFORMATION IS SUBJECT TO CHANGE.
PLEASE REFERENCE OUR ON-LINE DRAWINGS AT
www.concordelevator.com FOR THE MOST RECENT UPDATES

| TOP RAIL BRACKET RB3 | AT TOP OF HOISTWAY CONSULT YOUR CONCORD REPRESENTATIVE FOR EXACT LOCATION | FLOOR No. | | FLOOR HEIGHT |
|--|---|-----------|-------|-----------------|
| | | REAR | FRONT | |
| INTERMEDIATE RAIL BRACKET RB2 | 96" [2438mm] INTERVALS ABOVE BOTTOM BRACKET | | | |
| BOTTOM RAIL BRACKET RB1 | 24" [610mm] ABOVE PIT FLOOR | | | |
| TOTAL RISE | | | | |

| PIT / OVERHEAD REQUIREMENTS | | | |
|-----------------------------|-------------|-----------------|---------------------|
| MAX. SPEED (ft/min) | MIN. PIT | TOTAL TRAVEL | MINIMUM OVERHEAD |
| 36 | 8" *** | | 92" (2337) |

*** NOTE: Additional pit equipment required
when over 36" [914.4mm] deep ,
consult your local dealer for details

DOCUMENT REVISION 001, DATE: 04/24/07

RESIDENTIAL ELEVATOR
INFINITY MODEL 4054 TYPE 1L

| | | |
|-----------|----------------|--|
| CUSTOMER: | DATE: | THE INFORMATION DISCLOSED HEREIN IS THE EXCLUSIVE PROPERTY OF savaria AND MAY NOT BE USED BY OTHERS WITHOUT PRIOR WRITTEN CONSENT |
| PROJECT: | REVISION DATE: | |
| LOCATION: | COMPLETED BY: | |

