

## CONSTRUCTION SUMMARY

Upside Towns - Firstgreen Corp

PURCHASERS: JOEL S WALDMAN and LAURIE M WALDMAN

*Applicant  
Spec's*

TEL:

LOT / PHASE Block 4 TH21 / 1	REG. PLAN #	HOUSE TYPE The Tannery Elev 1	RECEIVED
---------------------------------	-------------	----------------------------------	----------

JUL 29 2020

### CABINETRY

1 - KITCHEN CABINETRY UPGRADE 2 HARDWARE 06Jul20 Note:	
1 - KITCHEN CABINETRY UPGRADE 2 06Jul20 Note:	

### CABINETRY ACCESSORIES

1 - KITCHEN- ADD SOFT CLOSE DRAWERS- 06Jul20 Note:	
2 - KITCHEN CABINETRY BASE - POT/PAN DRAWERS (CABINET) - UPGRADE 2 06Jul20 Note:	
<b>MOVE BANK OF DRAWERS TO ISLAND-ADD 2 SETS OF DRAWERS-SEE SKETCH</b>	
1 - KITCHEN CABINETRY UPPER - FULL DEPTH ABOVE FRIDGE - WITH GABLES - 600MM - PRICE IS EACH - UPGRADE 2 06Jul20 Note:	

### CERAMIC TILE

1 - UPGRADE 3 FLOOR TILE - MASTER ENSUITE 06Jul20 Note:	
--	--

### CONSTRUCTION

1 - SMOOTH CEILINGS ON GROUND LEVEL FLOOR ONLY 06Jul20 Note:	
---	--

### COUNTER TOP

1 - KITCHEN BACKSPLASH - CAESAR STONE QUARTZ MATERIAL - STANDARD AREA 06Jul20 Note:	
1 - KITCHEN COUNTERTOP UPGRADE TO CAESAR STONE QUARTZ IN LIEU OF VENDOR STANDARD 06Jul20 Note:	
1 - MASTER ENSUITE COUNTERTOP UPGRADE TO HIGH QUARTZ IN LIEU OF VENDOR STANDARD 06Jul20 Note:	
1 - MAIN BATH COUNTERTOP UPGRADE TO HIGH QUARTZ IN LIEU OF VENDOR STANDARD 06Jul20 Note:	

### DOORS AND TRIM

1 - DOORS INTERIOR - - LINCON SMOOTH HALLOW IN LIEU OF STANDARD SERIES - PRICE IS PER DOOR 06Jul20 Note:	
---	--

### ELECTRICAL

2 - LIGHT AND SWITCH - NO FIXTURE INCLUDED- ADD ON ISLAND 06Jul20 Note:	
31 - PCT LIGHT - LED - FIRST FLOOR INSTALLATION 06Jul20 Note:	
<b>SEE SKETCH-</b>	

### FIREPLACE AND ACCESSORIES

## CONSTRUCTION SUMMARY

Upside Towns - Firstgreen Corp

PURCHASERS: JOEL S WALDMAN and LAURIE M WALDMAN

TEL:

LOT / PHASE	REG. PLAN #	HOUSE TYPE		
Block 4 TH21 / 1		The Tannery Elev 1		

1 - GAS LINE ROUGH-IN FOR STOVE (INCLUDES ELECTRICAL OUTLET) - SECOND FLOOR

06Jul20 Note:

### HARDWOOD FLOORING

1 - LAMINATE -UPGRADE TO LEXINGTON SERIES IN LIEU OF STANDARD LAMINATE

06Jul20 Note:

### PLASTER MOULDINGS

1 - FAMILY ROOM ADD PLASTER MOULDING

06Jul20 Note:

### PLUMBING

1 - MAIN BATH- ADD DRYDEN 551DST CHROME

06Jul20 Note:

2 - MASTER ENSUITE- ADD DRYDEN X2- 3551LF CHROME

06Jul20 Note:

1 - TERRACE -ADD HOSEBIB-

06Jul20 Note:

### PROMOTIONAL

1 - LESS CREDIT FROM PURCHASER EXTRA SHEET IN OFFER

06Jul20 Note:

### STAIRS AND RAILINGS

1 - VICTORIAN HANDRAIL

06Jul20 Note:

1 - EUROLINE VICTORIAN BLACK IRON PICKETS

06Jul20 Note:

This Document is Extremely Time Sensitive - Printed 27 Jul 20 at 11:59

06Jul20 Note:

06Jul20 Note:



**COAST**  
**APPLIANCES**  
*Brands You Want, Expertise You Need*

## **Lori Waldman Blk 4 Unit 21**

---

Prepared by  
Andrew Haidari  
COAST APPLIANCES  
[ahaidari@coastappliances.com](mailto:ahaidari@coastappliances.com)



# KitchenAid®

## 30-Inch 5-Burner Gas Convection Front Control Range

KSGG700ESS

This beautiful gas range produces flawless cooking results thanks to Even-Heat™ True Convection; the unique bow-tie design and convection fan ensure the inside of the entire oven is heated to, and stays at, the perfect temperature. This range also features a Steam Rack that offers the ability to add additional moisture to the inside of the oven, enhancing cooking results. The oven is 5.8 cu ft.



### Top Features

#### Even-Heat™ True Convection

Produces flawless results. The unique bow-tie design and convection fan ensure the inside of the entire oven is heated to, and stays at, the perfect temperature.

#### Steam Rack

Offers the ability to provide additional moisture to the inside of the oven, enhancing cooking results.

#### 5.8 cu ft. Oven Capacity

This gas slide-in range provides a large cooking capacity that's perfect for multiple dishes at once.

#### 5 burners (5k, 8k, 9.2k, 15k and 17k)

Provides the perfect range of cooking power from 5,000 to 17,000 BTU, so you can go from a rolling boil to a delicate simmer.

### Available Finishes/Colours

	KSGG700EBS Black Stainless Steel with PrintShield™ Finish		KSGG700ESS Stainless Steel
--	--	---	-------------------------------

### Manuals & Literature:

 <a href="#">Dimension Guide</a>	 <a href="#">Installation Instructions</a>
 <a href="#">Use and Care</a>	 <a href="#">Warranty</a>

### Dimensions

Height	36
Width	29 7/8

### Exterior

Handle Type	Towel Bar
Handle Color	Stainless Steel
Handle Material	Metal

### Configuration and Overview

Fuel Type	Gas
Range Type	Slide-in
Size (IN, inches)	30
LP Convertible	Yes

### Misc.

Accessory Relationships	Yes
Home Delivery	Yes
Will Call	Yes

### Configuration

Range Configuration	Slide-In
Oven Configuration	Single Oven

### Appearance

Oven Door	Metal & Glass
Handle Material	Metal

### Exterior

Drawer Type	Storage Drawer
Oven Door	Metal & Glass
Oven Window Size	Large

### Oven Details

Drawer Type	Storage Drawer
Automatic Convection Conversion Temperature Adjust	Yes



## 23.8 cu. ft. 36" Counter-Depth French Door Platinum Interior Refrigerator with PrintShield™ Finish

KRFC704FPS

The largest capacity counter-depth refrigerator in its class features PrintShield™ finish to resist fingerprints outside and flexible storage options inside. A slide-away shelf retracts to fit tall items, and full-extension self-close crispers and custom temperature pantry let you store more and find it easily.

### Top Features

**Under-Shelf Prep Zone**  
Utilizes empty space beneath the shelf to create a prep zone ideal for dough, desserts or marinating meats. 6" x 10" x 2" slide-out pan is oven- and dishwasher-safe, and easily transitions from fridge to oven so you can stay in the creative flow.





**Slide-Away Shelf**  
Features a versatile design that allows three-quarters of the shelf to retract to accommodate taller items, such as wine bottles, up to 16.75 inches. This flexibility offers the most tall-item storage space in its class and helps optimize organization.

**Full-Extension Self-Close FreshSeal™ Crispers**  
Maintain optimal humidity levels to help keep produce at peak freshness. Brightly lit drawers open fully so you can see and easily access all your items.

### Available Finishes/Colours

-  KRFC704FBS Black Stainless Steel with PrintShield™ Finish
-  KRFC704FPS Stainless Steel with PrintShield™ Finish
-  KRFC704FSS Stainless Steel

### Manuals & Literature:

-  [Dimension Guide](#)
-  [Energy Guide](#)
-  [Use and Care](#)
-  [Warranty](#)

Dimensions		Details	
Depth	31 1/2	Counter Depth	Yes
Height	71 7/8		
Width	35 13/16		

Configuration and Overview	
Advance Foam Insulation	99.9% lower Global Warming Potential and Better Energy Performance
Counter Depth	Yes
Number of Doors	3

Compatibility	
Connectivity	No
Works With	No

Details	
Cooling Type	Dual Evaporator
Advance Foam Insulation	99.9% lower Global Warming Potential and Better Energy Performance

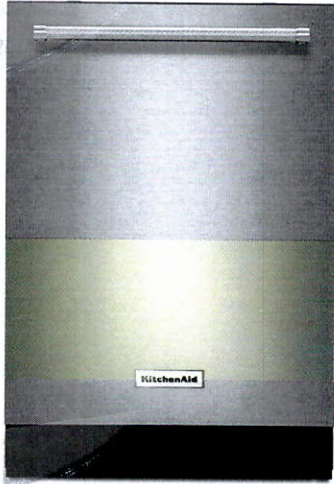
Controls	
Control Type	Electronic
Air Filter Indicator/Reset	Yes
Automatic Defrost	Yes
Verrouillage des commandes	Yes
LCD Touch Screen	No
Door Ajar/Open Alarm	Yes
Control Location	Exterior Dispenser, Side Door

# KitchenAid®

## 46 DBA Dishwasher with Third Level Rack and PrintShield™ Finish

KDTE234GPS

Take clean to new heights with features like a Third Level Rack that makes it easy to clean hard-to-place items. The intuitive, one-touch ProWash™ Cycle delivers exceptional results by making real-time cycle adjustments. The PrintShield™ Finish keeps the exterior fingerprint and smudge-resistant while the stainless steel interior and Heat Dry help improve drying performance.



### Top Features

#### Third Level Rack

Adds 35% more space and makes it easier to clean long and flat cooking tools like spatulas and serving utensils, as well as items like food processor blades and mixer beaters, while freeing up space in the lower two racks.

#### ProWash™ Cycle

Determines the ideal cycle for washing dishes based on soil level and then makes real-time adjustments to achieve the best cleaning performance.

#### PrintShield™ Finish

Resists smudges and fingerprints. The specialized coating for stainless steel is easy to clean with just water and a soft cloth, so you can spend more time cooking and less time cleaning up the kitchen.

#### Durable Stainless Steel Interior

Offers the beauty and benefits of stainless steel for the dishwasher interior. It resists streaks, stains and odors while retaining heat to help improve drying performance.

### Available Finishes/Colours



KDTE234GBS  
Black Stainless  
Steel with  
PrintShield™ Finish



KDTE234GPS  
Stainless Steel with  
PrintShield™ Finish

### Manuals & Literature:



[Dimension Guide](#)



[Energy Guide](#)



[Installation Instructions](#)



[Use and Care](#)



[Warranty](#)

### Dimensions

Depth	24 1/2
Height	34 1/2
Width	23 7/8

### Configuration and Overview

Dishwasher Type	Built-In
Decibel Level dBA	46

### Controls

Automatic Temperature Controls	Yes
Last Cycle Recall	No
Sensor	Yes
Status Light	White
Control Location	Top

### Controls

Control Type	Electronic Touch
--------------	------------------

### Compatibility

Connectivity	No
Works With	No

### Misc.

Accessory Relationships	Yes
Home Delivery	Yes
Will Call	Yes

### Details

Dispenser	Detergent and Rinse Aid
Rinse Aid Dispenser Level Indicator	Optical Level Indicator
True Hold Door	Yes

# KitchenAid®

## 30" Under-the-Cabinet, 4-Speed System

### KVUB600DSS

The power of a 4-speed motor adds to the precision of this under-the-cabinet ventilation system that pairs well with most 30-inch cooktops and ranges. The under-the-cabinet design allows you to hide ductwork inside cabinetry for a more built-in look.



#### Top Features

##### 600 CFM/65K BTU Threshold

Allows installation over any KitchenAid regular 36- or 30-inch range or cooktop, and some commercial-style cooking surfaces with outputs up to 65K BTU.

##### Perimeter Ventilation

Increases ventilation system efficiency by pulling air from the edges of the hood and speeding up the movement of air at the center, allowing it to efficiently handle up to a 65K BTU total output.

##### Programmable Off Function

Can be set to automatically turn off after a period of time.

##### LED Task Lights


Provide extra lighting over the cooking surface to help in the cooking process.


#### Available Finishes/Colours

 KVUB600DSS  
Stainless Steel

#### Manuals & Literature:

 [Dimension Guide](#)

 [Installation Instructions](#)

 [Use and Care](#)

 [Warranty](#)

#### Available Finishes/Color

 KVUB600DSS

#### Available Finishes/Color

 KVUB600DSS

#### Dimensions

Depth	19 3/4
Height	9
Width	30

#### Details

Task Light Type	LED
Task Lighting	Yes
Material	Stainless Steel
Night Light	Yes

#### Configuration and Overview

Hood Type	Under-the-Cabinet
Size (IN, inches)	30

#### Details

Material (2)	Stainless Steel
Night Light Type	N/A
Number of Night Light Settings	0
Number of Task Light Settings	1

#### Misc.

Accessory Relationships	Yes
Home Delivery	Yes
Will Call	Yes

#### Features

Night Light Type	N/A
Number of Night Light Settings	0



## 5.2 cu. ft. I.E.C. Closet-Depth Front Load Washer with Load & Go™ XL Dispenser

WFW6620HC

Skip adding detergent to every load with a Whirlpool® closet-depth front load washing machine. The Load & Go™ XL dispenser holds enough laundry soap for 40 loads and automatically adds the right amount. Intuitive Controls let you create customized washing machine cycles, and the ENERGY STAR® certified front load washer will even help you save on your utility bills.



### Top Features

#### Load & Go™ XL Dispenser

Skip steps with the Load & Go™ XL dispenser. Simply add detergent once and skip refills for 40 loads.

#### ENERGY STAR® Certified

ENERGY STAR® certified models exceed government standards to help conserve natural resources and save money on your utility bills.

#### 5.2 cu. ft. I.E.C. Capacity

Wash over three baskets of clothing in a single load and finish laundry fast with 5.2 cu. ft. I.E.C. washer capacity that offers enough space to handle larger loads.

#### Intuitive Controls

Let the washer guide you to the right cycle combinations or customize up to 35 of your own to get the right type of fabric care for whatever you're washing.

### Available Finishes/Colours



### Manuals & Literature:

- [Energy Guide](#)
- [Installation Instructions](#)
- [Use and Care](#)
- [Warranty](#)

### Dimensions

Depth	31 9/16
Width	27

### Controls

End of Cycle Signal	Yes
LCD Touch Screen	No
LED Color	Blue

### Exterior

Lid/Door Lock	Yes
Lid/Door Swing	Left
Window	Yes

### Compatibility

Connectivity	No
Works With	No

### Controls

Automatic Temperature Controls	Yes
Control Type	Tap Touch
Control Location	Front
Electronic Display Type	Cycle Indicator Lights with Digital Time Remaining

### Appearance

Window	Yes
LCD Touch Screen	No

### Details

Advanced Vibration Control™	No
Automated Dispenser	Load&Go™

### Available Finishes/Color

WFW6620HC

### Available Finishes/Color

WFW6620HW

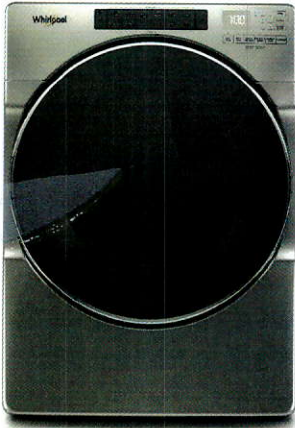




## 7.4 cu. ft. Front Load Electric Dryer with Steam Cycles

YWED6620HC

Give your family's clothes the care they deserve with a front load electric dryer with the Wrinkle Shield™ Plus option with Steam. Advanced Moisture Sensing helps prevent overdrying by using three moisture sensors to end the cycle at just the right time. The ENERGY STAR® certified electric dryer even includes a Static Reduce option to help decrease static after drying.



### Top Features

#### Wrinkle Shield™ Plus Option with Steam

Help keep wrinkles from setting into clean, dry fabrics. The Wrinkle Shield™ Plus option with Steam uses tumbling and steam for up to 150 minutes after the cycle ends or until you open the dryer door for improved wrinkle-fighting performance.

#### 7.4 cu. ft. Capacity

Get plenty of room to dry the large loads you washed in the matching front load washer. This 7.4 cu. ft. dryer easily handles bulky items like comforters and sleeping bags.

#### Intuitive Controls

Let the dryer guide you to the right cycle combinations or customize up to 36 of your own to get the right type of fabric care for whatever you're drying.

#### Steam Refresh Cycle

Release wrinkles and reduce odors with the Steam Refresh cycle. It uses water and heat to get clothes ready to wear without rewashing.

### Available Finishes/Colours



### Manuals & Literature:

- [Energy Guide](#)      [Installation Instructions](#)
- [Use and Care](#)      [Warranty](#)

### Dimensions

Depth	31
Height	38 3/4
Width	27

### Controls

Electronic Display Type	Cycle Indicator Lights
Feedback-Status Indicators	Check Vent, Cool Down, Damp, Sensing, We
End of Cycle Signal	Yes
Control Type	Electronic Touch

### Configuration and Overview

Fuel Type	Electric
-----------	----------

### Appearance

Door Style	Side Swing
Window	Yes
Reversible Door	Yes

### Misc.

Accessory Relationships	Yes
Home Delivery	Yes
Will Call	Yes

### Exterior

Door Style	Side Swing
Window	Yes
Door Opening	Right
Reversible Door	Yes

### Details

Maytag Commercial Components	No
------------------------------	----

### Controls

Control Location	Front
------------------	-------



# 15.5" Pedestal for Front Load Washer and Dryer with Storage

(Fit) cannot open door

WFP2715HC

Raise your Laundry Pair for easier loading and unloading. Optional laundry pedestal also provides space-saving storage for detergent, fabric softener, dryer sheets and other supplies.



### Top Features

Laundry Pedestal  
Laundry Pedestal

### Dimensions

Depth	27 5/16
Height	15 1/2
Width	27

### Misc.

UPS Shippable	UPS1
Home Delivery	Yes
Will Call	Yes

### Available Finishes/Colours

- WFP2715HC Chrome Shadow
- WFP2715HW White

### Manuals & Literature:

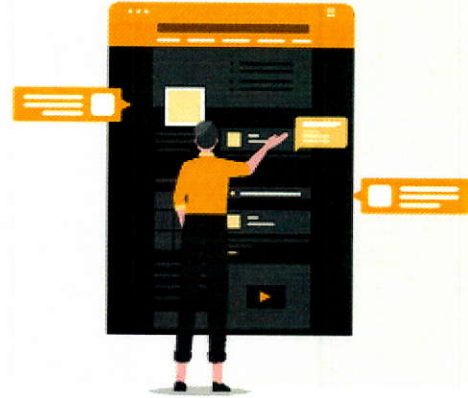
[Installation Instructions](#)

[Installation Instructions](#)



# WHIRLPOOL OWNER SUPPORT

Whirlpool is dedicated to providing resources and tools that will make sure you love your appliances and know how to get the most out of them when you get home.



## RESOURCES AVAILABLE TO ALL OWNERS

We've ensured that you can easily access info related to your appliances when and where you need it.



### WEBSITES:

Our sites are constantly updated with relevant content and resources to help answer questions. The Product Help section is a great tool to help you drill down on FAQs and DIY.



[Whirlpool product help >](#)



[Maytag product help >](#)



[KitchenAid product help >](#)



### YOUTUBE:

Our videos help you with unboxing, installation and early use of your appliances, and we are working to add more! Check out our Youtube channels - we've organized our playlists to help you find what you need!





## CUSTOMIZED INFO & TIPS SENT DIRECTLY TO YOUR INBOX

Register your appliance today. It only takes 3 minutes, and when you opt-in to receive emails, we'll send you personalized content based on your new appliance. You'll also gain exclusive access to great promotions. Click below to get started.

[Whirlpool register >](#)

[Maytag register >](#)

[KitchenAid register >](#)

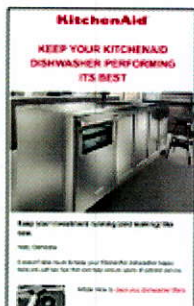


### BUILDING AN OWNER PROFILE:

Upon signing up for emails, we will ask you to take a short, fun quiz (if you'd like). This helps us know what appliances you own, the type of content you want / don't want to receive and how often.



[Check out the experience >](#)



### ONBOARDING EMAILS:

Our Onboarding program helps you with early use of the appliance, provides ongoing tips as well as points you to where you can find great videos, FAQs and resources on our websites.



### ONGOING PERSONALIZED CONTENT:

Based on your profile preferences, we'll make sure to send only what is relevant and helpful to you. These emails range from promos, cooking and cleaning tips, to recipes and more.



**OUR GOAL IS TO HELP YOU HAVE THE BEST EXPERIENCE WITH YOUR APPLIANCE AND BE HERE WHEN YOU NEED US!**  
**REMEMBER TO REGISTER YOUR APPLIANCE AND OPT-IN TO RECEIVE PERSONALIZED CONTENT BY EMAIL.**

Upon signing up for emails, we will ask you to take a short, fun quiz (if you'd like). This helps us know what appliances you own, the type of content you want / don't want to receive and how often.