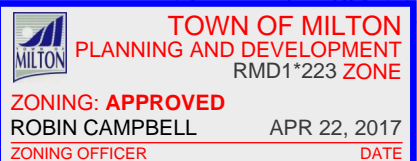
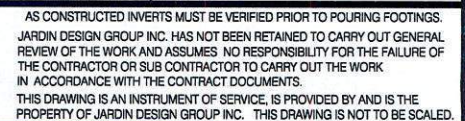


-

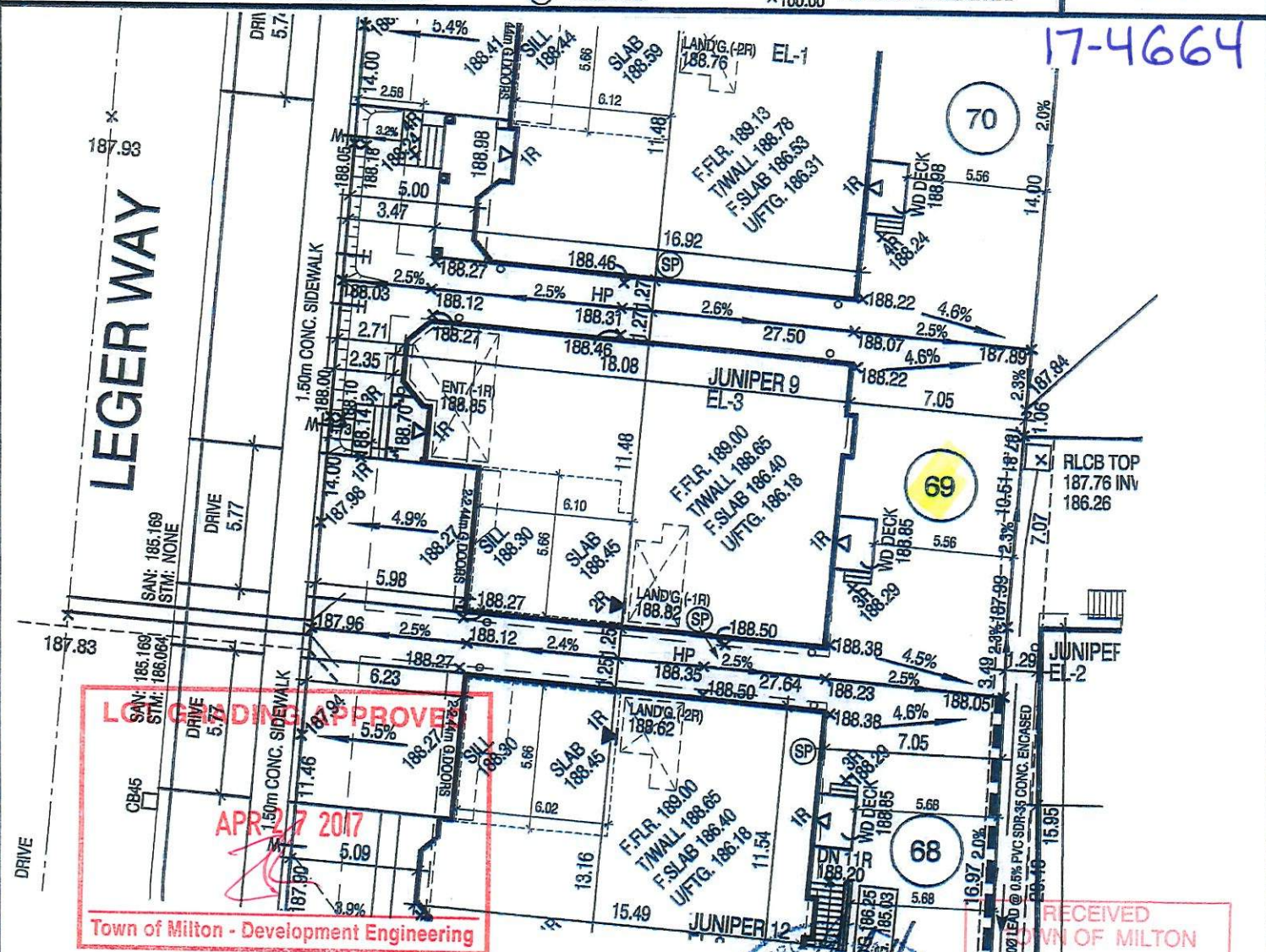


REVISIONS:

John G. Williams Limited, Architect



- | | | | | | | | |
|-----|---------------------|------|------------------------|---|-----------------------|---------------|-----------------------------|
| --- | STORM CONNECTION | △ | ENTRANCE DOOR LOCATION | ● | STREET LIGHT | F.FLR. | FINISHED FLOOR ELEVATION |
| --- | SANITARY CONNECTION | ▲ | GARAGE DOOR LOCATION | ▲ | TRANSFORMER | T/WALL | TOP OF FOUNDATION WALL |
| W | WATER CONNECTION | * | ENGINEERED FILL LOT | ☒ | CABLE TV PEDESTAL | F.SLAB | FIN. BASEMENT FLOOR SLAB |
| H | HYDRO CONNECTION | ● | SANITARY MANHOLE | ■ | BELL PEDESTAL | U/FTG. | UNDERSIDE FOOTING ELEVATION |
| □ | DOUBLE CATCH BASIN | ○ | STORM MANHOLE | Ⓜ | HYDRO METER | TTT | PROPOSED 3:1 SLOPE |
| □ | CATCH BASIN | MAIL | COMMUNITY MAILBOX | ◇ | GAS METER | 100.00 | PROPOSED GRADE |
| ⊕ | HYDRANT | ○ | DOWNSPOUT LOCATION | ☒ | AIR-CONDITIONING UNIT | (100.00) | EXISTING GRADE |
| ⊗ | VALVE AND CHAMBER | ← | SWALE DIRECTION | Ⓢ | SUMP PUMP | SW
×100.00 | PROPOSED SWALE GRADE |



The MUNICIPAL INFRASTRUCTURE Group Ltd.