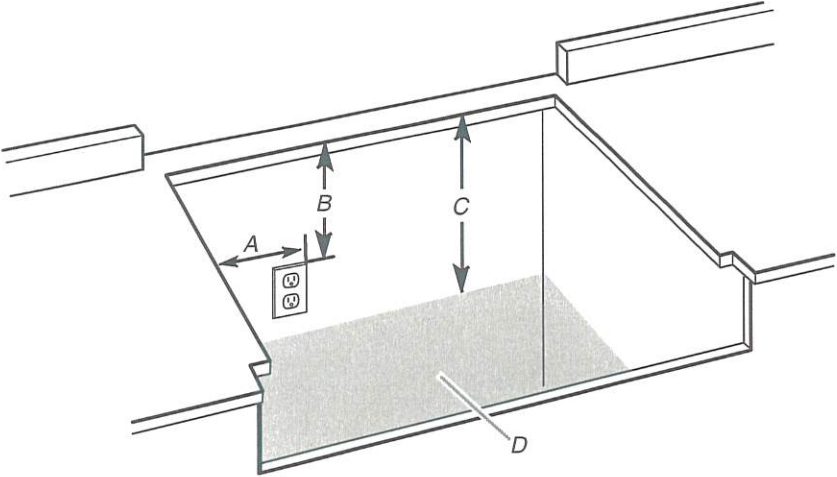


PV2-11 O  
MAY 9 2025

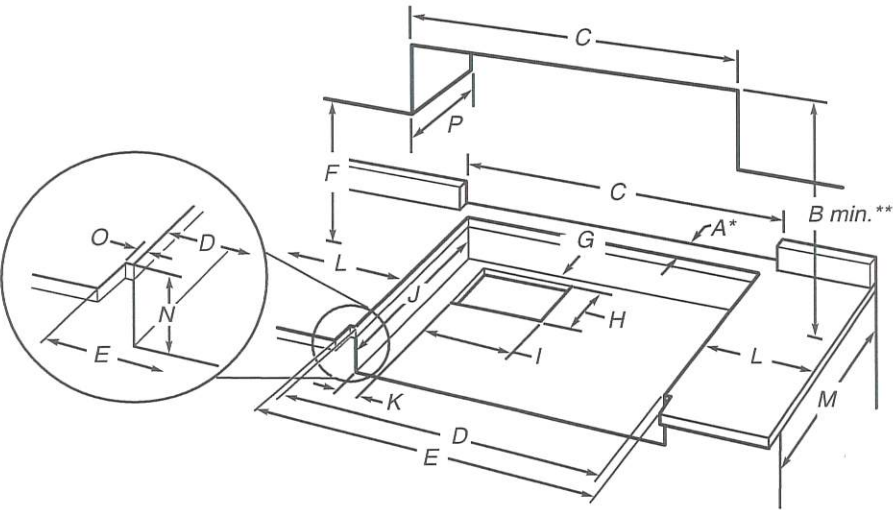
Gas and Electric Connection Locations



- A. Grounded 3 prong outlet should be located on left-hand side of the cutout 16" (40.6 cm) max. from enclosure sidewall
  - B. 10" (25.4 cm) min. clearance from countertop to top of the outlet
  - C. 14" (35.6 cm) countertop to the gas supply line
  - D. Gas supply line should be located in this area on rear or side walls or the supply line can come up through the floor.
- NOTE:** Solid side and bottom of cutout enclosure not shown.

Cabinet Requirements

**IMPORTANT:** If installing a range hood or microwave hood combination above the cooking surface, follow the range hood or microwave hood combination installation instructions for dimensional clearances above the cooktop surface.



- A. See chart.
- B. See chart.
- C. See chart.
- D. See chart.
- E. See chart.
- F. 18" (45.7 cm) min. clearance upper cabinet to countertop
- G. 3/4" (19 mm) back of cabinet cutout to gas opening cutout
- H. 6 7/8" (16.1 cm) gas opening cutout depth
- I. 12 1/2" (31.7 cm) gas opening cutout width
- J. 22 1/4" (56.5 cm) cabinet cutout depth
- K. 2" (5.1 cm) cabinet side to gas cutout
- L. 6" (15.2 cm) min. distance on both sides of the cooktop to the side wall or other combustible material above cooking surface
- M. 24" (61.0 cm) cabinet depth
- N. 7 1/4" (18.4 cm) cabinet depth to countertop
- O. Notch to be equal on both sides
- P. 13" (33.0 cm) upper cabinet depth

Size	A* Cooktop Cutout to Back Wall	B** Cooktop to Cabinet	C Optional Backguard and Upper Cabinet Opening	D Cabinet and Countertop	E Countertop Only
30" (76.2 cm)	1 3/4" (4.4 cm)*	42" (106.7 cm)	30" (76.2 cm)	29 1/4" (74.3 cm)	29 7/8" (75.9 cm) for zero clearance
36" (91.4 cm)	1 3/4" (4.4 cm)*	58" (147.3 cm)	36" (91.4 cm)	35 1/4" (89.5 cm)	35 3/4" (90.8 cm) for zero clearance
48" (121.9 cm)	1 3/4" (4.4 cm)*	58" (147.3 cm)	48" (121.9 cm)	47 1/4" (120.0 cm)	47 7/8" (121.6 cm) for zero clearance

\* **NOTE:** If back wall is constructed of a combustible material and a backguard is not installed, a minimum clearance of dimension A + 6" (15.2 cm) is required for all models.

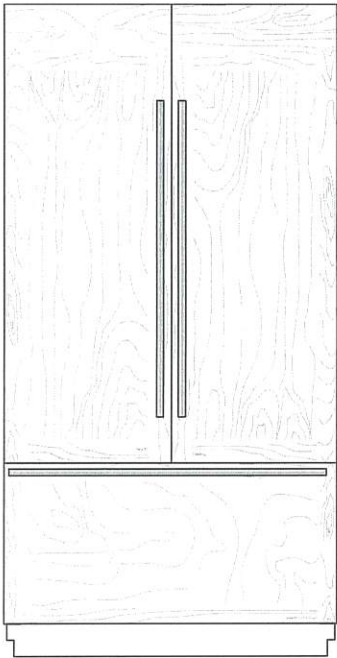
\*\* **NOTES:** Dimension "B" can be reduced by 6" (15.2 cm) when bottom of wood or metal cabinet is covered by not less than 0.25" (6.4 mm) flame retardant millboard covered with not less than No. 28 MSG sheet metal, 0.015" (0.4 mm) stainless steel, 0.024" (0.6 mm) aluminum, or 0.020" (0.5 mm) copper.

If installing a range hood above the cooktop, follow the range hood instructions for dimensional clearances above the cooktop surface.

**NOTE:** Due to manufacturing factory tolerances, these are nominal dimensions. You may need to readjust to meet your clearance.

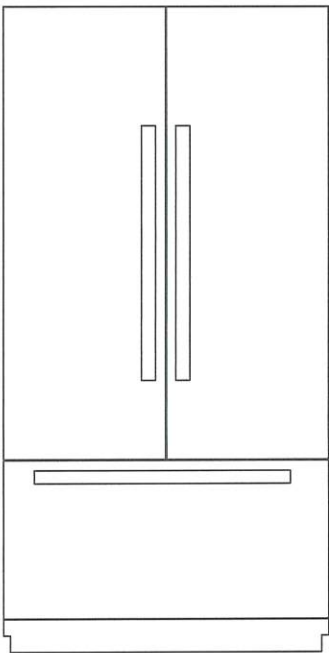
PJZ-11  
MAY 9 2025

36" AND 42" FRENCH DOOR MODELS



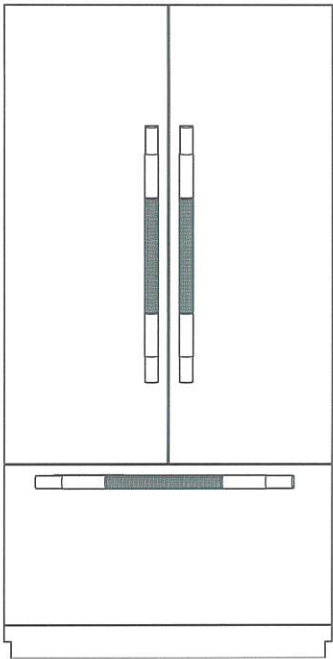
Custom-Made Panel Design

Features custom-made panels and custom hardware provided by the cabinetmaker for a seamless appearance designed to blend with existing kitchen cabinetry.  
**Base Model Numbers:** JF42NXXFXDE, JF36NXXFXDE  
**ARMOIRE KIT NUMBER:** W10663562, W10663564



NOIR™ Stainless Design

Features stainless steel wrapped doors and new NOIR™ handles.  
**Base Model Numbers:** JF42NXXFXDE, JF36NXXFXDE  
**Panel Kit Model Number:** JBFFS42NHL, JBFFS36NHL



RISE™ Stainless Design

Features stainless steel wrapped doors and new RISE™ handles.  
**Base Model Numbers:** JF42NXXFXDE, JF36NXXFXDE  
**Panel Kit Model Number:** JBFFS42NHL, JBFFS36NHL

ACCESSORIES

All factory parts are available through JennAir dealer or by calling JennAir® at **1-800-JENNAIR (1-800-536-6247)**. In Canada, call **1-800-536-6247**.

DOOR HANDLE KITS

For custom wood overlay panels only, handle kits can be ordered. Follow the kit instructions for installation.  
Handle Kits contain 3 handles per Kit.

**IMPORTANT:** These handle kits are not intended for use with stainless steel door panel kits.

RISE™ Stainless Steel—36" FDBM—W11231247

NOIR™ Stainless Steel—36" FDBM—W11194768

RISE™ Stainless Steel—42" FDBM—W11296021

NOIR™ Stainless Steel—42" FDBM—W11194769

ARMOIRE-STYLE DOOR PANEL KIT

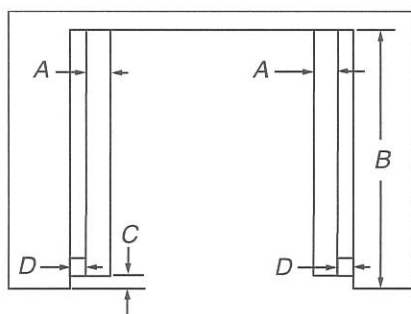
Refer to the installation instructions that come with the Armoire kit, for custom wood overlay panel dimensions and installation details.

36" Model — W10663562

42" Model — W10663564



702-11  
May 9 2025



Top View

**27" (68.6 cm) models**

- A. 2" (5.1 cm) spacer the entire depth of the cutout\*
- B. 25" (63.5 cm) depth of cutout
- C. 1 1/2" (3.5 cm) recess from front of cabinet
- D. 7/8" (2.2 cm) side cleat\*

**30" (76.2 cm) models**

- A. 2" (5.1 cm) spacer the entire depth of the cutout\*
- B. 25" (63.5 cm) depth of cutout
- C. 1 1/2" (3.5 cm) recess from front of cabinet
- D. 7/8" (2.2 cm) side cleat\*

\*Cleats and spacers must be recessed 1 3/8" (3.5 cm) from the front of the cabinet.

## Electrical Requirements

### ⚠ WARNING



#### Electrical Shock Hazard

Electrically ground appliance.

Failure to do so could result in death, fire, or electrical shock.

If codes permit and a separate ground wire is used, it is recommended that a qualified electrical installer determine that the ground path and the wire gauge are in accordance with local codes.

Check with a qualified electrical installer if you are not sure the oven is properly grounded.

This oven must be connected to a grounded metal, permanent wiring system.

Be sure that the electrical connection and wire size are adequate and in conformance with the National Electrical Code, ANSI/NFPA 70-latest edition or CSA Standards C22.1-94, Canadian Electrical Code, Part 1 and C22.2 No. O-M91-latest edition, and all local codes and ordinances.

A copy of the above code standards can be obtained from:

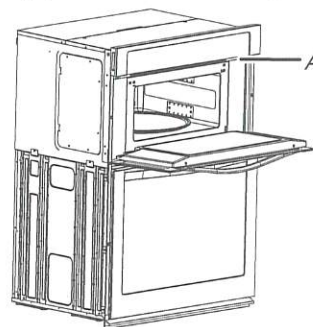
National Fire Protection Association  
1 Batterymarch Park  
Quincy, MA 02169-7471

CSA International  
8501 East Pleasant Valley Road  
Cleveland, OH 44131-5575

## Electrical Connection

To properly install your oven, you must determine the type of electrical connection you will be using and follow the instructions provided for it here.

- Oven must be connected to the proper electrical voltage, amperage, and frequency as specified on the model/serial/rating plate. See the following illustration.



A. Model/serial/rating plate


- Models rated from 7.3 to 9.6 kW at 240 V (6.3 to 8.3 kW at 208 V) require a separate 40 A circuit. Models rated from 4.9 to 7.2 kW at 240 V (4.3 to 6.2 kW at 208 V) require a separate 30 A circuit. Models rated at 4.8 kW and below at 240 V (4.2 kW and below at 208 V) require a separate 20 A circuit.
- A circuit breaker is recommended.
- Connect directly to the fused disconnect (or circuit breaker box) through flexible, armored or nonmetallic sheathed, copper cable (with grounding wire). See the "Make Electrical Connection" section.
- Flexible conduit from the oven should be connected directly to the junction box.
- Do not cut the conduit. The length of conduit provided is for serviceability of the oven.
- A UL listed or CSA approved conduit connector must be provided.
- If the house has aluminum wiring, follow the procedure below:  
Connect the aluminum wiring using special connectors and/or tools designed and UL listed for joining copper to aluminum.

Follow the electrical connector manufacturer's recommended procedure. Aluminum/copper connection must conform with local codes and industry accepted wiring practices.

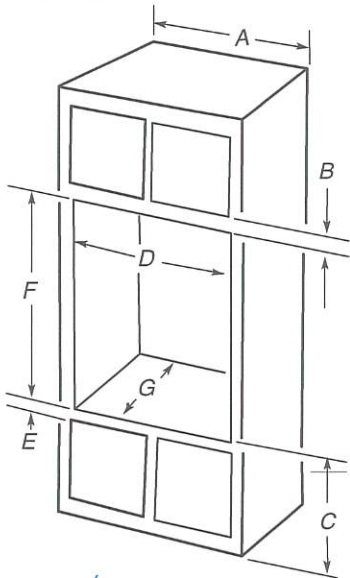
Be sure that the electrical connection and wire size are adequate and in conformance with the National Electrical Code, ANSI/NFPA 70-latest edition or CSA Standards C22.1-94, Canadian Electrical Code, Part 1 and C22.2 No. O-M91-latest edition, and all local codes and ordinances. A copy of the above code standards can be obtained from:

National Fire Protection Association  
1 Batterymarch Park  
Quincy, MA 02169-7471

CSA International  
8501 East Pleasant Valley Road  
Cleveland, OH 44131-5575

PJZ-11   
May 9 2025

## Cabinet Dimensions — Built-in Microwave/Oven Combination Standard Installation



### 27" (68.6 cm) models

- A. 27" (68.6 cm) minimum cabinet width
- B. 2 1/4" (5.7 cm) top of cutout to bottom of upper cabinet door
- C. 19 1/4" (48.9 cm) bottom of cutout to floor is recommended. 7"-19 1/4" (17.8-48.9 cm) bottom of cutout to floor is acceptable.
- D. 25 1/2" (64.8 cm) minimum cutout width
- E. 1 1/2" (3.8 cm) minimum bottom of cutout to top of cabinet door
- F. 41 5/16" (105 cm)\* recommended cutout height
- G. 24" (60.7 cm) cutout depth

### 30" (76.2 cm) models

- A. 30" (76.2 cm) minimum cabinet width
- B. 2 1/4" (5.7 cm) top of cutout to bottom of upper cabinet door
- C. 19 1/4" (48.9 cm) bottom of cutout to floor is recommended. 7"-19 1/4" (17.8-48.9 cm) bottom of cutout to floor is acceptable.
- D. 28 1/2" (72.4 cm) minimum cutout width
- E. 1 1/2" (3.8 cm) minimum bottom of cutout to top of cabinet door
- F. 41 5/16" (105 cm)\* recommended cutout height
- G. 24" (60.7 cm) cutout depth

**\*NOTE:** The cutout height can be between 41 1/8" (104.5 cm) and 41 7/8" (106.3 cm) for microwave/oven combination.

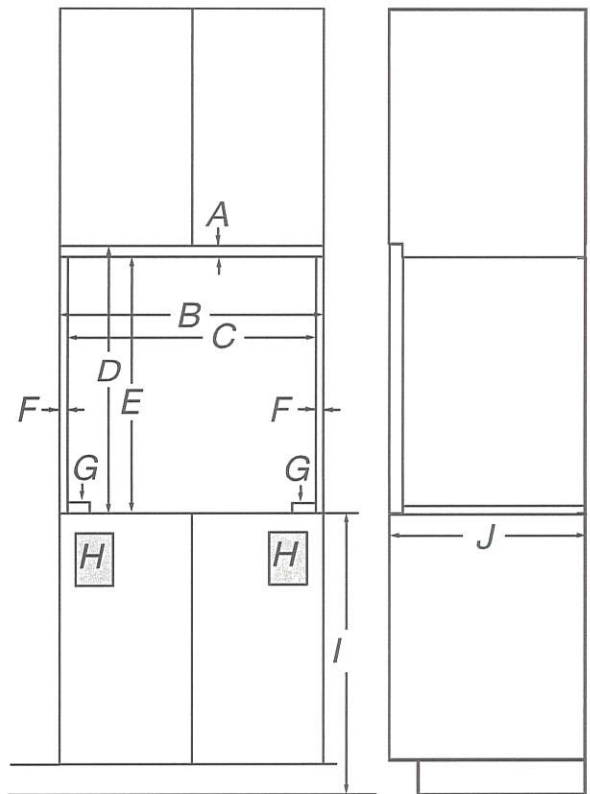
## \* Flush Installation

A 25" (63.5 cm) minimum cutout depth is required.

The front face of the cleats and platform will be visible and should be treated as a finished surface.

Front View

Side View



### 27" (68.6 cm) models

- A. 3/4" (1.9 cm) top cleat\*
- B. 27 1/4" (69.2 cm) minimum width of flush inset cutout\*
- C. 25 7/8" (65.7 cm) minimum width of opening
- D. 44 5/16" (112.5 cm) minimum height of flush inset cutout
- E. 43 9/16" (110.6 cm) recommended cutout height
- F. 11/16" (1.7 cm) side cleat\*
- G. 1/4" (0.6 cm) recommended with foot. 15/16" to 1 5/16" (2.3 cm to 3.5 cm) allowable without foot.\*\*
- H. Recommended junction box location
- I. 45 5/8"-19 1/4" (11.7-48.9 cm) bottom of cutout to floor
- J. 25" (63.5 cm) minimum depth of cutout

### 30" (76.2 cm) models

- A. 3/4" (1.9 cm) top cleat\*
- B. 30 1/4" (76.8 cm) minimum width of flush inset cutout\*
- C. 28 7/8" (73.3 cm) minimum width of opening
- D. 44 5/16" (112.5 cm) minimum height of flush inset cutout
- E. 43 9/16" (110.6 cm) recommended cutout height
- F. 11/16" (1.7 cm) side cleat\*
- G. 1/4" (0.6 cm) recommended with foot. 15/16" to 1 5/16" (2.3 cm to 3.5 cm) allowable without foot.\*\*
- H. Recommended junction box location
- I. 45 5/8"-19 1/4" (11.7-48.9 cm) bottom of cutout to floor
- J. 25" (63.5 cm) minimum depth of cutout

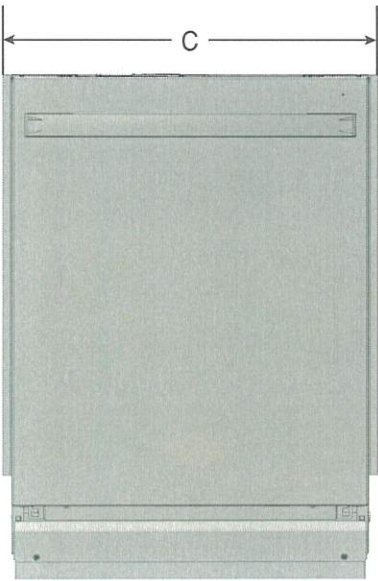
\*These dimensions will lead to side gaps of 1/4" (0.6 cm).

\*\*Top and bottom gaps will be 3/8" (0.9 cm) gap above the 1/8" (0.3 cm) gap below the product. Top and bottom gaps not required for Installation. Expose areas of the cabinet should be finished to match.

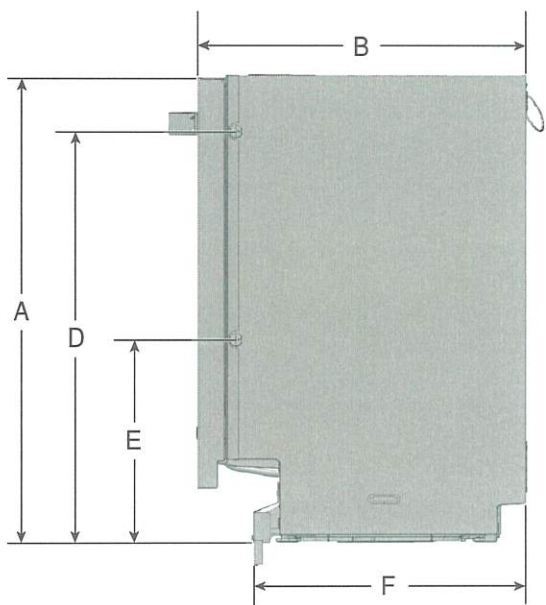


PVZ-11 ○  
May 9 2025

PRODUCT DIMENSIONS

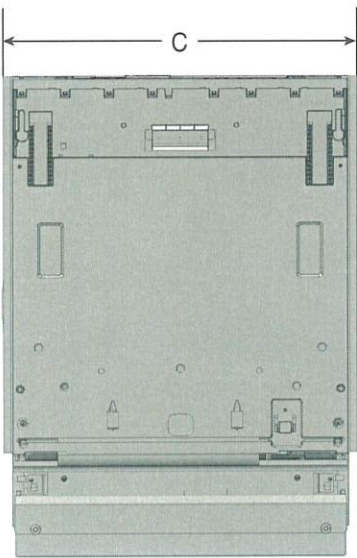


C. 23<sup>9</sup>/<sub>16</sub>" (599 mm)

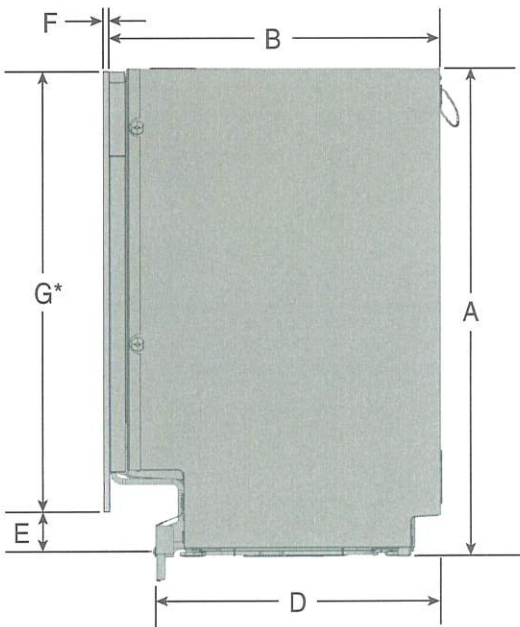


A. 32<sup>1</sup>/<sub>4</sub>"-35<sup>7</sup>/<sub>16</sub>" (820-900 mm)      E. 14<sup>1</sup>/<sub>16</sub>" (358 mm)  
B. 22<sup>5</sup>/<sub>8</sub>" (574 mm)      F. 18<sup>3</sup>/<sub>4</sub>" (477 mm)  
D. 28<sup>3</sup>/<sub>8</sub>" (721 mm)

PRODUCT DIMENSIONS (FOR PANEL READY MODELS)



C. 23<sup>9</sup>/<sub>16</sub>" (599 mm)



A. 32<sup>1</sup>/<sub>4</sub>"-35<sup>7</sup>/<sub>16</sub>" (820-900 mm)      E. E = A - G  
B. 21<sup>7</sup>/<sub>8</sub>" (555 mm)      F. 11<sup>1</sup>/<sub>16</sub>"-1<sup>3</sup>/<sub>4</sub>" (18-45 mm)  
D. 18<sup>3</sup>/<sub>4</sub>" (477 mm)      G. 28<sup>3</sup>/<sub>8</sub>"-29<sup>15</sup>/<sub>16</sub>" (720-760 mm)

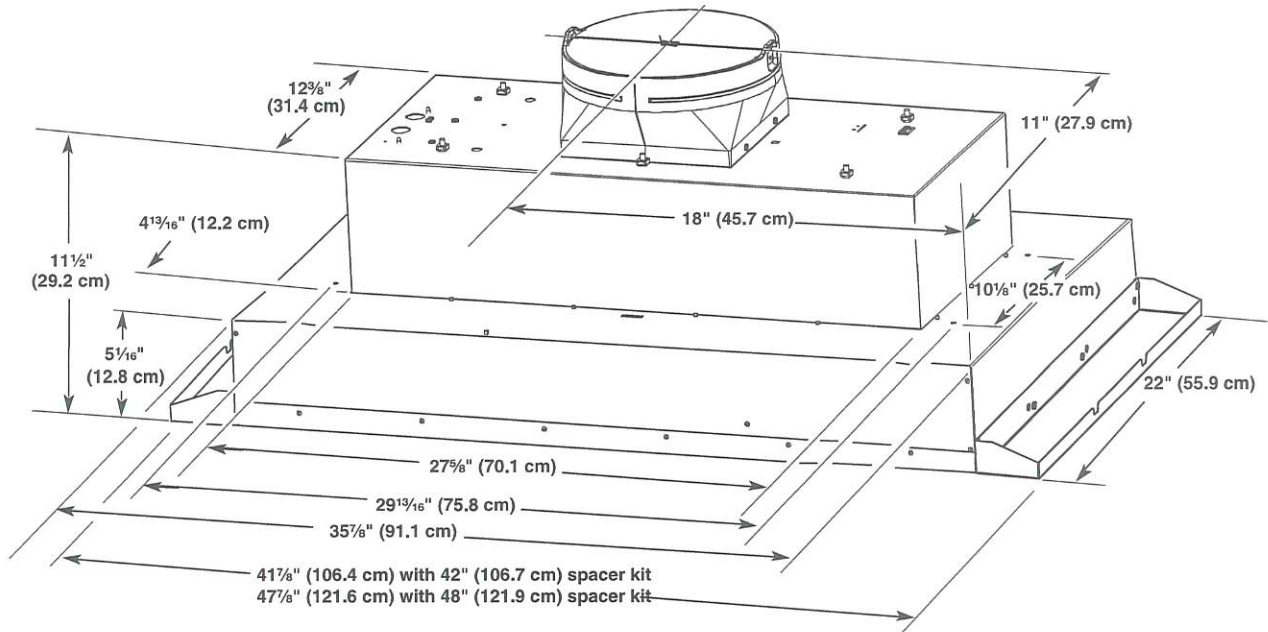
**\*NOTE:** If a custom toe kick is desired to be installed, adjust the thickness of the custom panel to make it flush with the cabinet toe kick. Product's original metal toe kick must remain even if custom toe kick is installed.

Because Whirlpool Corporation policy includes a continuous commitment to improve our products, we reserve the right to change materials and specifications without notice.

Dimensions are for planning purposes only. For complete details, see Installation Instructions packed with product. Specifications subject to change without notice.

PJZ-11    
 MAY 9 2025

## Installation Dimensions



## Venting Requirements

- Vent system must terminate to the outdoors.
- Do not terminate the vent system in an attic or other enclosed area.
- Do not use 4" (10.2 cm) laundry-type wall caps.
- Use metal vent only. Rigid metal vent is recommended. Plastic or metal foil vent is not recommended.
- The length of vent system and number of elbows should be kept to a minimum to provide efficient performance.

### For the most efficient and quiet operation:

- Use no more than three 90° elbows.
- Make sure there is a minimum of 24" (61.0 cm) of straight vent between the elbows if more than 1 elbow is used.
- Do not install 2 elbows together.
- Use vent clamps to seal all joints in the vent system.
- Use caulking to seal exterior wall or roof opening around the cap.
- The size of the vent should be uniform.

### Cold weather installations

An additional back draft damper should be installed to minimize backward cold air flow and a thermal break should be installed to minimize conduction of outside temperatures as part of the vent system. The damper should be on the cold air side of the thermal break.

The break should be as close as possible to where the vent system enters the heated portion of the house.

### Makeup air

Local building codes may require the use of makeup air systems when using ventilation systems greater than specified CFM of air movement. The specified CFM varies from locale to locale. Consult your HVAC professional for specific requirements in your area.

## Venting Methods

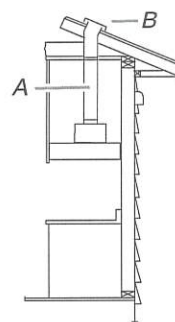
### Typical Internal Blower Motor System Venting Installations

A 10" (25.4 cm) round vent system is needed for installation (not included). The hood exhaust opening is 10" (25.4 cm) round.

**NOTE:** Flexible vent is not recommended. Flexible vent creates back pressure and air turbulence that greatly reduce performance.

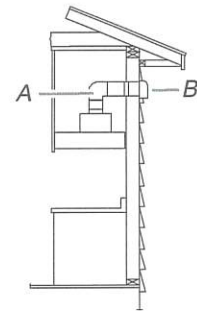
Vent system can terminate either through the roof or wall. To vent through the wall, a 90° elbow is needed.

### Roof Venting



A. 10" (25.4 cm) round vent  
 B. Roof cap

### Wall Venting



A. 10" (25.4 cm) round vent  
 B. Wall cap



PJ2-11  
MAY 9 2025



Front Load Perfect Steam™ Electric Dryer with Predictive Dry™ and Instant Refresh – 8.0 Cu. Ft.

Dryer
Available Products: ELFE753CAT, ELFE753CAW
Available Colors: Titanium, White
Version: 04/24

Product Specifications

Dryer

Air Flow	200 CFM
Drum Back Type	Painted Steel
Drum Material	Painted Steel
Dryness Level Selections	Yes
Lint Filter	Yes
Predictive Dry	Yes

Dryer Options

Anti Static	Yes
Delay Start Time	1-12 Hours
Drum Light	Yes
Dry Boost	Yes
Extended Tumble	Yes
Perfect Steam	Yes
Wrinkle Release	Yes

Dryness Level

Max	Yes
High	Yes
Normal	Yes
Low	Yes
Damp	Yes

Exterior

Door Latch	Yes
Reversible Door	Yes

Electrical Specifications

Minimum Circuit Required	30 Amps
Voltage Rating	208/240v

Installation

Optional Pedestal	Yes
Power Cord Included	Yes
Ventilation Type	Vented

Performance Certifications and Approvals

ENERGY STAR Certified	Yes
-----------------------	-----

Dryer Cycles

Cycle Count	10
Activewear	Yes
Allergen	Yes
Delicates	Yes
Séchage rapide	Yes
Heavy Duty	Yes
Instant Refresh	Yes
Mixed Load	Yes
Normal	Yes
Timed Dry Time	Yes
Towels	Yes

Drying Temperatures

Low	Yes
Normal	Yes
High	Yes
Sanitize	Yes
Eco Dry	Yes

Controls

Cancel	Yes
Cycle Status Lights	Yes
Delay Start	Yes
Estimated Time Remaining	Yes
Control Lock	Yes
Pause Function	Yes
Power On/Off	Yes
Start	Yes

Dimensions and Volume

Height	38"
Width	27"
Depth	32"
Dryer Drum Capacity	8 Cu. Ft.
Dry Linen Capacity Tested Amount	11.5 kg

Energy Data

Combined Energy Factor (CEF)	3.48
kWh/cycle	2.5 kWh
kWh/year	620 kWh

We reserve the right to change specifications or discontinue models without notice.  
Electrolux Major Appliances, N.A.  
CANADA • 5855 Terry Fox Way • Mississauga, ON L5V 3E4 • 1-800-265-8352 • electrolux.ca



PU2-11 ○  
MAY 9 2025



Front Load Perfect Steam™ Washer with LuxCare® Plus Wash - 5.2 Cu. Ft.  
I.E.C  
Front Load Washer  
Available Products: ELFW7537AT, ELFW7537AW  
Available Colors: Titanium, White  
Version: 10/24

Product Specifications

Washer

Drum Light	Yes
Drum Material	Stainless Steel
Maximum Spin Speed	1300 RPM
Water Heater	Yes
Water Level Adjustment	Yes

Washer Options

Allergen	Yes
Delay Start Time	1-12 Hours
Extended Refresh	Yes
Extra Rinse	Yes
Perfect Steam	Yes
Pure Rinse	Yes
Stain Treat II	Yes
Steam	Yes

Washer Spin Speeds

Spin Speed Selections	5
Max	Yes
High	Yes
Medium	Yes
Low	Yes
No Spin	Yes

Temperature Settings

Eco Cold	Yes
Cool	Yes
Warm	Yes
Hot	Yes
Sanitize	Yes

Dispenser

Bleach Dispenser	Yes
Detergent Dispenser	Yes
Fabric Softener Dispenser	Yes
Prewash Detergent Dispenser	Yes
PODs Dispenser	Yes

Exterior

Door Latch	Yes
Reversible Door	Yes

Washer Cycles

Cycle Count	10
Activewear	Yes
Clean Washer	Yes
Colors	Yes
Delicates	Yes
Fast Wash	Yes
Heavy Duty	Yes
Normal	Yes
Rinse and Spin	Yes
Towels	Yes
Whitest Whites	Yes

Soil Levels

Extra Light	Yes
Light	Yes
Normal	Yes
Heavy	Yes
Solid Soil	Yes

Controls

Cancel	Yes
Control Lock	Yes
Cycle Status Lights	Yes
Delay Start	Yes
Pause Function	Yes
Power On/Off	Yes
Start	Yes

Dimensions and Volume

Height	38"
Width	27"
Depth	32"
Washer Drum Capacity I.E.C.	5.2 Cu. Ft.
Dry Linen Capacity Tested Amount	11.5 kg

Energy Data

Integrated Water Factor	3.2
kWh/cycle	0.29 kWh
kWh/year	85 kWh
Modified Energy Factor	2.92
Water Usage/Year	4248 Gallons

We reserve the right to change specifications or discontinue models without notice.  
Electrolux Major Appliances, N.A.  
CANADA • 5855 Terry Fox Way • Mississauga, ON L5V 3E4 • 1-800-265-8352 • electrolux.ca