

**DRYWALL**

Invoice	Qty.	Description
3059	1	GREAT ROOM: ADD 9-BOX WAFFLE CEILING #CTR-B07
04Oct23 NoCat		GREAT ROOM: ADD 6 BOX WAFFLE CEILING #CTR-B59+B60 MODERN STYLE

**ELECTRICAL**

Invoice	Qty.	Description
3059 164,749 04Oct23	8	BASEMENT: S/1 4" E/S LED INTERIOR POT LIGHT - GROUND FLOOR - EACH. WHITE  IN LIEU OF STANDARD CEILING LIGHTS, USE STANDARD SWITCHES. SEE PLAN FOR LOCATION.
3059 164,749 04Oct23	3	BASEMENT: S/1 4" E/S LED INTERIOR POT LIGHT - GROUND FLOOR - EACH. WHITE  IN LIEU OF STANDARD CEILING LIGHTS, USE STANDARD SWITCHES. SEE PLAN FOR LOCATION.
3059 164,749 04Oct23	5	KITCHEN: S/1 4" E/S LED INTERIOR POT LIGHT - GROUND FLOOR - EACH. WHITE  IN LIEU OF STANDARD CEILING LIGHTS, USE STANDARD SWITCHES. SEE PLAN FOR LOCATION.
3059 164,752 04Oct23	1	KITCHEN: S/1 ADDITIONAL INTERIOR SWITCH. SINGLE POLE  FOR POTLIGHTS
3059 164,741 04Oct23	1	KITCHEN: RELOCATE STANDARD CEILING MOUNT FIXTURE  LOCATE APPROX CENTERED ABOVE ISLAND, SEE PLAN FOR LOCATION.
3059 164,753 04Oct23	1	KITCHEN: S/1 ADDITIONAL REINFORCED CEILING OUTLET. SUPPORTS UP TO APPROX. 40 LBS.  LOCATE APPROX CENTERED ABOVE ISLAND, AS SAME SWITCH AS STANDARD LIGHT. SEE PLAN FOR LOCATION.
3059 164,747 04Oct23	1	KITCHEN: S/1 240V (50 AMP) RECEPTACLE ON A SEPARATE CIRCUIT  FOR FUTURE WALL OVEN. SEE PLAN FOR LOCATION
3059 164,743 04Oct23	1	KITCHEN: S/1 110V WALL RECEPTACLE ON SEPARATE CIRCUIT  FOR GAS APPLIANCE
3059 164,749 04Oct23	6	GREAT ROOM: S/1 4" E/S LED INTERIOR POT LIGHT - GROUND FLOOR - EACH. WHITE  INCLUDED IN APS. IN LIEU OF STANDARD CEILING LIGHTS. USE STANDAR SWITCH. SEE PLAN FOR LOCATION.
3059 164,749 04Oct23	2	MAIN HALL: S/1 4" E/S LED INTERIOR POT LIGHT - GROUND FLOOR - EACH. WHITE  INCLUDED IN APS
3059 164,749 04Oct23	1	MAIN HALL: S/1 4" E/S LED INTERIOR POT LIGHT - GROUND FLOOR - EACH. WHITE  SEE PLAN FOR LOCATION

**ELECTRICAL**

Invoice	Qty.	Description
3059 164,749 04Oct23	5	UPPER HALL: S/I 4" E/S LED INTERIOR POT LIGHT - GROUND FLOOR - EACH. WHITE  IN LIEU OF STANDARD CEILING LIGHTS, USE STANDARD SWITCHES. SEE PLAN FOR LOCATION.
3059 164,752 04Oct23	1	PRINCIPAL BEDROOM: S/I ADDITIONAL INTERIOR SWITCH. SINGLE POLE  FOR PTOLIGHTS
3059 164,749 04Oct23	4	PRINCIPAL BEDROOM: S/I 4" E/S LED INTERIOR POT LIGHT - GROUND FLOOR - EACH. WHITE  IN ADDITION TO STANDARD CEILING LIGHTS. SEE PLAN FOR LOCATION.
3059 164,749 04Oct23	5	PRINCIPAL BEDROOM WIC: S/I 4" E/S LED INTERIOR POT LIGHT - GROUND FLOOR - EACH. WHITE  IN LIEU OF STANDARD CEILING LIGHTS, USE STANDARD SWITCHES. SEE PLAN FOR LOCATION.
3059 164,747 04Oct23	1	GARAGE: S/I 240V (50 AMP) RECEPTACLE ON A SEPARATE CIRCUIT  FOR FUTURE CAR CHARGER

**FRAMING**

Invoice	Qty.	Description
3059 164,770 04Oct23	1	KITCHEN: DELETE KITCHEN BULKHEAD, IF POSSIBLE, SITE APPROVAL REQUIRED AND IF MECHANICAL LAYOUTS ALLOW. GAP ABOVE UPPER KITCHEN CABINETS WILL BE PRESENT UNLESS ADDITIONAL CABINetry IS PURCHASED.
3059 164,775 04Oct23	1	KITCHEN: S/I TALLER UPPER, FURRING PANEL WITH CROWN MOULDING TO CEILING. OPTION ONLY AVAILABLE WITH DELETED BULKHEAD.
3059 164,774 04Oct23	1	PRINCIPAL ENSUITE: S/I RECESSED SHOWER NICHE [SHAMPOO SHELF] - COMPLETE WITH MATCHING STONE ON 4 SIDES, STANDARD TILE, APPROX. 12 X 42 INSTALLED VERTICALLY WITH STONE SHELF DIVIDERS - MUST SPECIFY LOCATION. BASED ON STANDARD FINISHES.

**HVAC**

Invoice	Qty.	Description
3059 164,780 04Oct23	1	GAS LINE ROUGH-IN - MAIN FLOOR FOR COOKTOP

**INTERIOR DOORS AND TRIM**

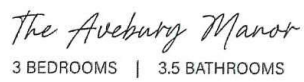
Invoice	Qty.	Description
3059 164,784 04Oct23	15	2ND FLOOR: S/I 8FT HIGH DOOR THROUGHOUT SECOND FLOOR IN LIEU OF STANDARD HEIGHT DOOR. PRICE IS PER DOOR

**NETWORK AND WIRING**

Invoice	Qty.	Description
3059 164,789 04Oct23	1	GREAT ROOM: S/I CONDUIT PIPE FOR WALL MOUNT TV   LOCATED APPROX. 66" A.F.F. ABOVE FIREPLACE THROUGH BASEMENT TO CABLE LOCATION. SEE PLAN FOR LOCATION.
3059 164,787 04Oct23	1	GREAT ROOM: S/I ADDITIONAL CAT6 ETHERNET OUTLET  SEE PLAN FOR LOCATION
3059 164,794 04Oct23	1	EXTERIOR: S/I SECURITY PACKAGE - ROUGH - IN WIRING FOR: 1 RING DOOR BELL + 2 CAMERAS - 1 AT FRONT AND 1 AT REAR. COMPONENTS NOT INCLUDED. (CAT6)

**PLUMBING**

Invoice	Qty.	Description
3059 164,798 04Oct23	1	KITCHEN: S/I ROUGH-IN 1/4" COLD WATER LINE TO FRIDGE
3059 04Oct23 NoCat	1	PRINCIPAL ENSUITE: UPGRADE TO MOEN 'ALIGN' SUITE INCLUDING RAIN SHOWER + TUB FILLER + LAV FAUCET x2



**END 2 A 2357 SQ.FT.**  
INCLUDES 471 SQ.FT. OF FINISHED BASEMENT

 **END 2 B 2353 SQ.FT.**  
INCLUDES 471 SQ.FT. OF FINISHED BASEMENT

The image displays two architectural floor plans for the lower level of a house, with handwritten red annotations. The top plan is labeled 'Part Lower Level ELEV K - UPGRADED CUPPER' and the bottom plan is labeled 'Part Lower Level ELEV K'. Both plans show a layout with a Great Room, Kitchen, Dining Room, and various porches. Handwritten red notes include 'Waffle' pointing to a kitchen area, 'East Entry' pointing to an entryway, 'Oven' pointing to a kitchen area, and 'Sound' pointing to a living area. A vertical section on the right shows the relationship between the 'Part Lower Level' and the 'Part Second Floor'.

RENDERINGS ARE ARTIST'S CONCEPT. FIGURES, ILLUSTRATIONS, SIZES, FEATURES AND FINISHES ARE SUBJECT TO CHANGE WITHOUT NOTICE. AREAS AND DIMENSIONS ARE APPROXIMATE AND ACTUAL USABLE FLOOR SPACE MAY VARY FROM THE STATED AREA. LAYOUT MAY BE REVERSE OF THE UNIT PURCHASED. E. & O.E. 3101



# The Avebury Manor

3 BEDROOMS | 3.5 BATHROOMS

ELEV. A 2330 SQ.FT.  
INCLUDES 466 SQ.FT. OF FINISHED BASEMENT

ELEV. B 2327 SQ.FT.  
INCLUDES 466 SQ.FT. OF FINISHED BASEMENT

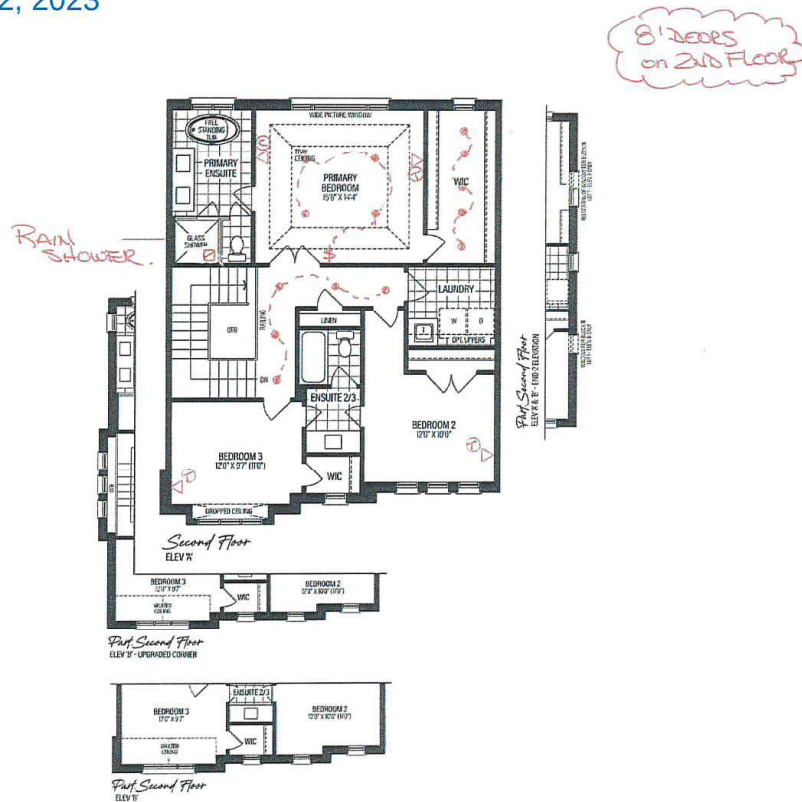
END 1 A 2366 SQ.FT.  
INCLUDES 499 SQ.FT. OF FINISHED BASEMENT

END 1 B 2362 SQ.FT.  
INCLUDES 488 SQ.FT. OF FINISHED BASEMENT

END 2 A 2357 SQ.FT.  
INCLUDES 471 SQ.FT. OF FINISHED BASEMENT

END 2 B 2353 SQ.FT.  
INCLUDES 471 SQ.FT. OF FINISHED BASEMENT

TM-9-1  
October 2, 2023



VENDOR

PURCHASER

PURCHASER

## SCHEDULE 'F'

**GOLDPARK**  
WORTH MORE

RENDERINGS ARE ARTIST'S CONCEPT. FIGURES, ILLUSTRATIONS, SIZES, FEATURES AND FINISHES ARE SUBJECT TO CHANGE WITHOUT NOTICE. AREAS AND DIMENSIONS ARE APPROXIMATE AND ACTUAL USABLE FLOOR SPACE MAY VARY FROM THE STATED AREA. LAYOUT MAY BE REVERSE OF THE UNIT PURCHASED. E. & O.E. 3101



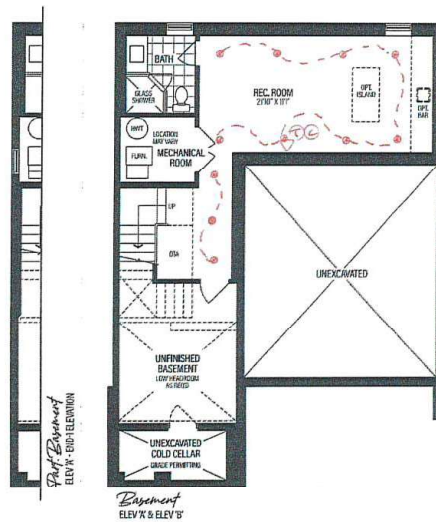
The Avebury Manor  
3 BEDROOMS | 3.5 BATHROOMS

ELEV. A 2330 SQ.FT.  
INCLUDES 466 SQ.FT. OF FINISHED BASEMENT  
ELEV. B 2327 SQ.FT.  
INCLUDES 466 SQ.FT. OF FINISHED BASEMENT

END 1 A 2366 SQ.FT.  
INCLUDES 469 SQ.FT. OF FINISHED BASEMENT  
END 1 B 2362 SQ.FT.  
INCLUDES 468 SQ.FT. OF FINISHED BASEMENT

END 2 A 2357 SQ.FT.  
INCLUDES 471 SQ.FT. OF FINISHED BASEMENT  
END 2 B 2353 SQ.FT.  
INCLUDES 471 SQ.FT. OF FINISHED BASEMENT

TM-9-1  
October 2, 2023



VENDOR	
PURCHASER	
PURCHASER	

SCHEDULE 'F'

**GOLD PARK**  
WORTH MORE

RENDERINGS ARE ARTIST'S CONCEPT, FIGURES, ILLUSTRATIONS, SIZES, FEATURES AND FINISHES ARE SUBJECT TO CHANGE WITHOUT NOTICE. AREAS AND DIMENSIONS ARE APPROXIMATE AND ACTUAL USABLE FLOOR SPACE MAY VARY FROM THE STATED AREA. LAYOUT MAY BE REVERSE OF THE UNIT PURCHASED. E. & O.E. 3101



THE MANORS  
AT FINE VALLEY

## PLUMBING UPGRADES

### ALIGN

Ceiling Mount: 226651 (12" Arm) ☒



Brushed Gold ☐  
Brushed Nickel ☐  
Chrome ☐  
Matte Black ☒

Date: <b>October 2, 2023</b>	Lot: <b>TM-B9-1</b>
------------------------------	---------------------

Location: <b>Principal Ensuite</b>
------------------------------------

Signature:	Signature:
------------	------------

**Shower with 3-Function Transfer Valve/Trim  
and Slide Bar with Hand Shower + 7" Rain  
Showerhead From Ceiling on 12" Arm**  
(includes plumbing provision for ceiling mount showerhead)  
Model T2192EP/UT4191/3887EP/226651/S176/U361CI/  
62320/A725

**GOLDPARK**  
WORTH MORE™

PLUMBING UPGRADES

ALIGN



- Brushed Gold ☐
- Brushed Nickel ☐
- Chrome ☐
- Matte Black ☒ x2

Date: <b>October 2, 2023</b>	Lot: <b>TM-B9-1</b>
------------------------------	---------------------

Location: <b>Principal Ensuite</b>
------------------------------------

Signature:	Signature:
------------	------------

Two Handle 8" Widespread Lav  
Model T6193/69000

**GOLDPARK**  
WORTH MORE™



ALIGN



\*includes Tub Drain Half Kit

- Brushed Gold ☐
- Brushed Nickel ☐
- Chrome ☐
- Matte Black ☒

Date: <b>October 2, 2023</b>	Lot: <b>TM-B9-1</b>
------------------------------	---------------------

Location: <b>Principal Ensuite</b>
------------------------------------

Signature:	Signature:
------------	------------