



The Ashton Manor

3-4 BEDROOMS | 4.5 BATHROOMS

ELEV. A 2825 SQ.FT.
INCLUDES 583 SQ.FT. OF FINISHED BASEMENT

ELEV. B 2813 SQ.FT.
INCLUDES 583 SQ.FT. OF FINISHED BASEMENT

END 1 A 2866 SQ.FT.
INCLUDES 587 SQ.FT. OF FINISHED BASEMENT

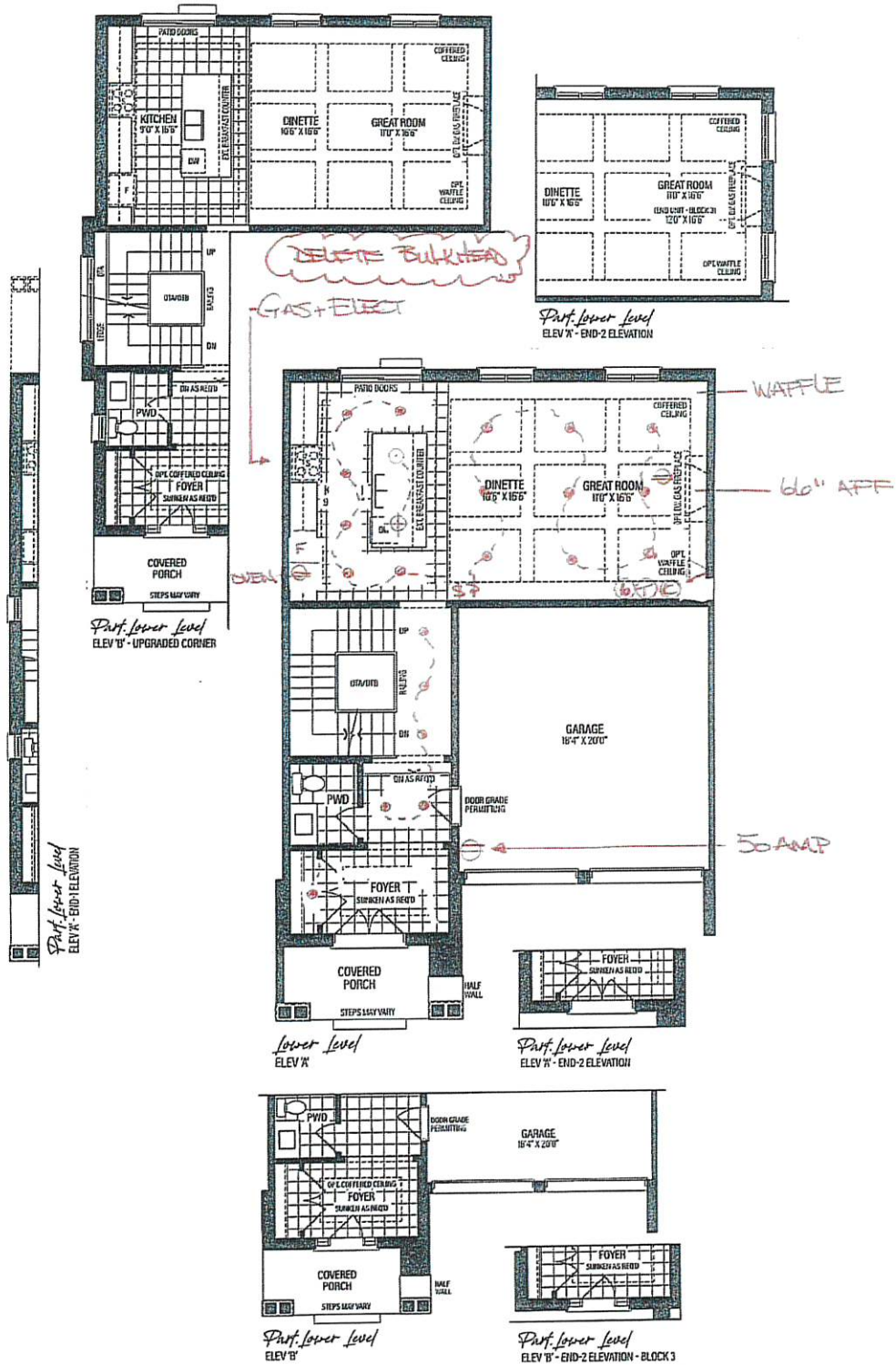
END 1 B 2855 SQ.FT.
INCLUDES 587 SQ.FT. OF FINISHED BASEMENT

END 2 A 2858 SQ.FT.
INCLUDES 590 SQ.FT. OF FINISHED BASEMENT

→ END 2 B 2846 SQ.FT.
INCLUDES 590 SQ.FT. OF FINISHED BASEMENT

TN-8-3

SEPT 28, 2023



| | |
|-----------|--|
| VENDOR | |
| PURCHASER | |
| PURCHASER | |

SCHEDULE 'F'

RENDERINGS ARE ARTIST'S CONCEPT. FIGURES, ILLUSTRATIONS, SIZES, FEATURES AND FINISHES ARE SUBJECT TO CHANGE WITHOUT NOTICE. AREAS AND DIMENSIONS ARE APPROXIMATE AND ACTUAL USABLE FLOOR SPACE MAY VARY FROM THE STATED AREA. LAYOUT MAY BE REVERSE OF THE UNIT PURCHASED. E. & O.E. 3103

GOLD PARK
WORTH MORE™



The Ashton Manor

3-4 BEDROOMS | 4.5 BATHROOMS

ELEV. A 2825 SQ.FT.
INCLUDES 583 SQ.FT. OF FINISHED BASEMENT

ELEV. B 2813 SQ.FT.
INCLUDES 583 SQ.FT. OF FINISHED BASEMENT

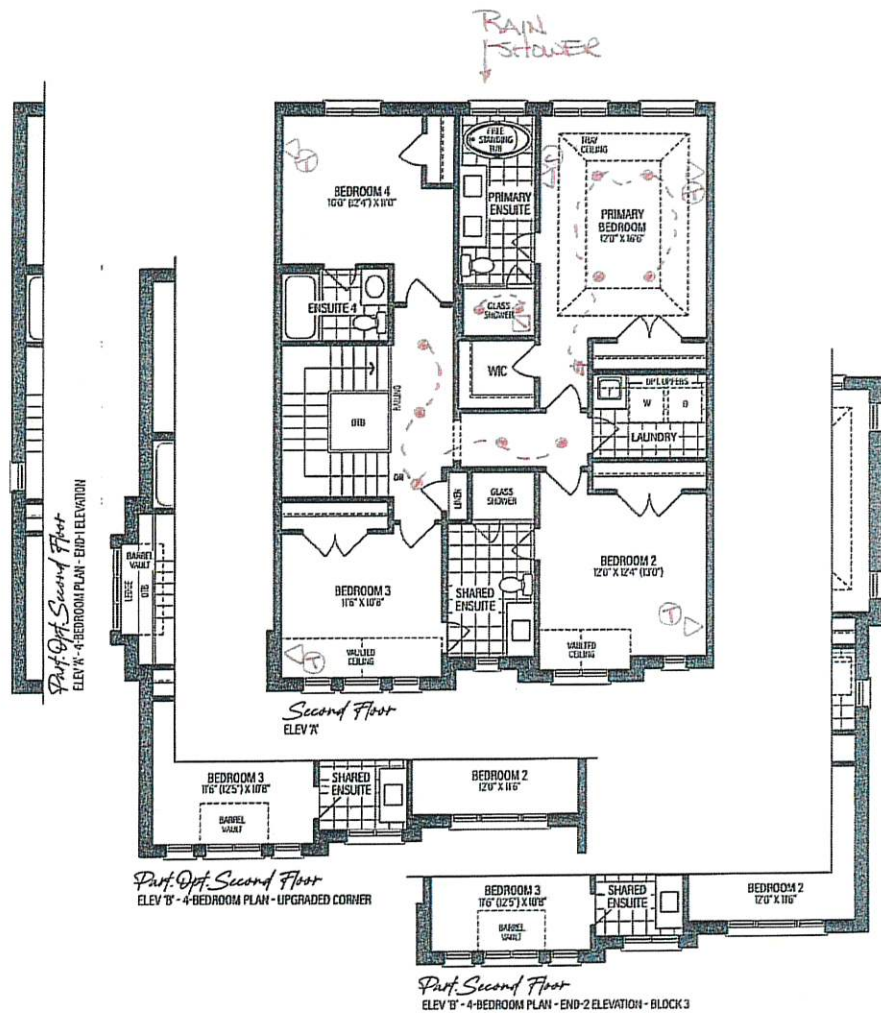
END 1 A 2866 SQ.FT.
INCLUDES 587 SQ.FT. OF FINISHED BASEMENT

END 1 B 2855 SQ.FT.
INCLUDES 587 SQ.FT. OF FINISHED BASEMENT

END 2 A 2858 SQ.FT.
INCLUDES 590 SQ.FT. OF FINISHED BASEMENT

END 2 B 2846 SQ.FT.
INCLUDES 590 SQ.FT. OF FINISHED BASEMENT

TM-8 -3
SEPT 28 2023



VENDOR

PURCHASER

PURCHASER

SCHEDULE 'F'

RENDERINGS ARE ARTIST'S CONCEPT. FIGURES, ILLUSTRATIONS, SIZES, FEATURES AND FINISHES ARE SUBJECT TO CHANGE WITHOUT NOTICE. AREAS AND DIMENSIONS ARE APPROXIMATE AND ACTUAL USABLE FLOOR SPACE MAY VARY FROM THE STATED AREA. LAYOUT MAY BE REVERSE OF THE UNIT PURCHASED. E. & O.E. 3103





The Ashton Manor

3-4 BEDROOMS | 4.5 BATHROOMS

ELEV. A 2825 SQ.FT.
INCLUDES 583 SQ.FT. OF FINISHED BASEMENT

ELEV. B 2813 SQ.FT.
INCLUDES 583 SQ.FT. OF FINISHED BASEMENT

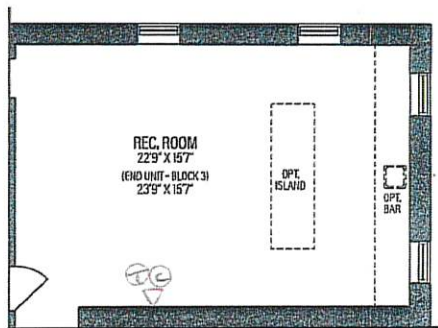
END 1 A 2866 SQ.FT.
INCLUDES 587 SQ.FT. OF FINISHED BASEMENT

END 1 B 2855 SQ.FT.
INCLUDES 587 SQ.FT. OF FINISHED BASEMENT

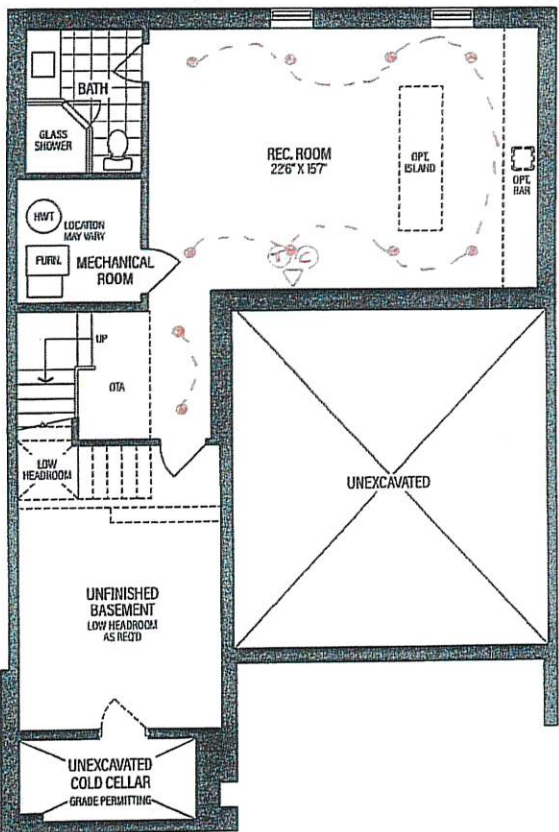
END 2 A 2858 SQ.FT.
INCLUDES 590 SQ.FT. OF FINISHED BASEMENT

→END 2 B 2846 SQ.FT.
INCLUDES 590 SQ.FT. OF FINISHED BASEMENT

TM-8 -3
SEPT 28, 2023



Part. Basement
ELEV 'A' & 'B' - END-2 ELEVATION



Basement
ELEV 'A' & 'B'

VENDOR

PURCHASER

PURCHASER

SCHEDULE 'F'

RENDERINGS ARE ARTIST'S CONCEPT. FIGURES, ILLUSTRATIONS, SIZES, FEATURES AND FINISHES ARE SUBJECT TO CHANGE WITHOUT NOTICE. AREAS AND DIMENSIONS ARE APPROXIMATE AND ACTUAL USABLE FLOOR SPACE MAY VARY FROM THE STATED AREA. LAYOUT MAY BE REVERSE OF THE UNIT PURCHASED. E. & O.E. 3103





THE MANORS
AT PINE VALLEY

PLUMBING UPGRADES

ALIGN

Ceiling Mount: 226651 (12" Arm)



Brushed Gold



Brushed Nickel



Chrome



Matte Black



Date: September 12, 2023

Lot: TM-B8-3

Location: Principal Ensuite

Signature:

Signature:

**Shower with 3-Function Transfer Valve/Trim
and Slide Bar with Hand Shower + 7" Rain
Showerhead From Ceiling on 12" Arm**

(includes plumbing provision for ceiling mount showerhead)
Model T2192EP/UT4191/3887EP/226651/S176/U361CI/
62320/A725

GOLD PARK
WORTH MORE™



THE MANORS
AT PINE VALLEY

PLUMBING UPGRADES

ALIGN



- Brushed Gold ☒ x2
- Brushed Nickel ☐
- Chrome ☐
- Matte Black ☐

| | |
|-----------------------------|--------------|
| Date: September 12, 2023 | Lot: TM-38-3 |
| Location: Principal Ensuite | |
| Signature: | Signature: |

Two Handle 8" Widespread Lav
Model T6193/69000

GOLD PARK
WORTH MORE™



THE MANORS
AT PINE VALLEY

PLUMBING UPGRADES

ALIGN



*includes Tub Drain Half Kit

- Brushed Gold☒
- Brushed Nickel☐
- Chrome☐
- Matte Black☐

| | |
|-----------------------------|--------------|
| Date: September 12, 2023 | Lot: TM-B8-3 |
| Location: Principal Ensuite | |
| Signature: | Signature: |

Two Handle Roman Tub
Model T393/4796

GOLDPARK
WORTH MORE™