









**ELEV. A 2825** SQ.FT.  
INCLUDES 583 SQ.FT. OF FINISHED BASEMENT

**ELEV. B 2813** SQ.FT.  
INCLUDES 583 SQ.FT. OF FINISHED BASEMENT

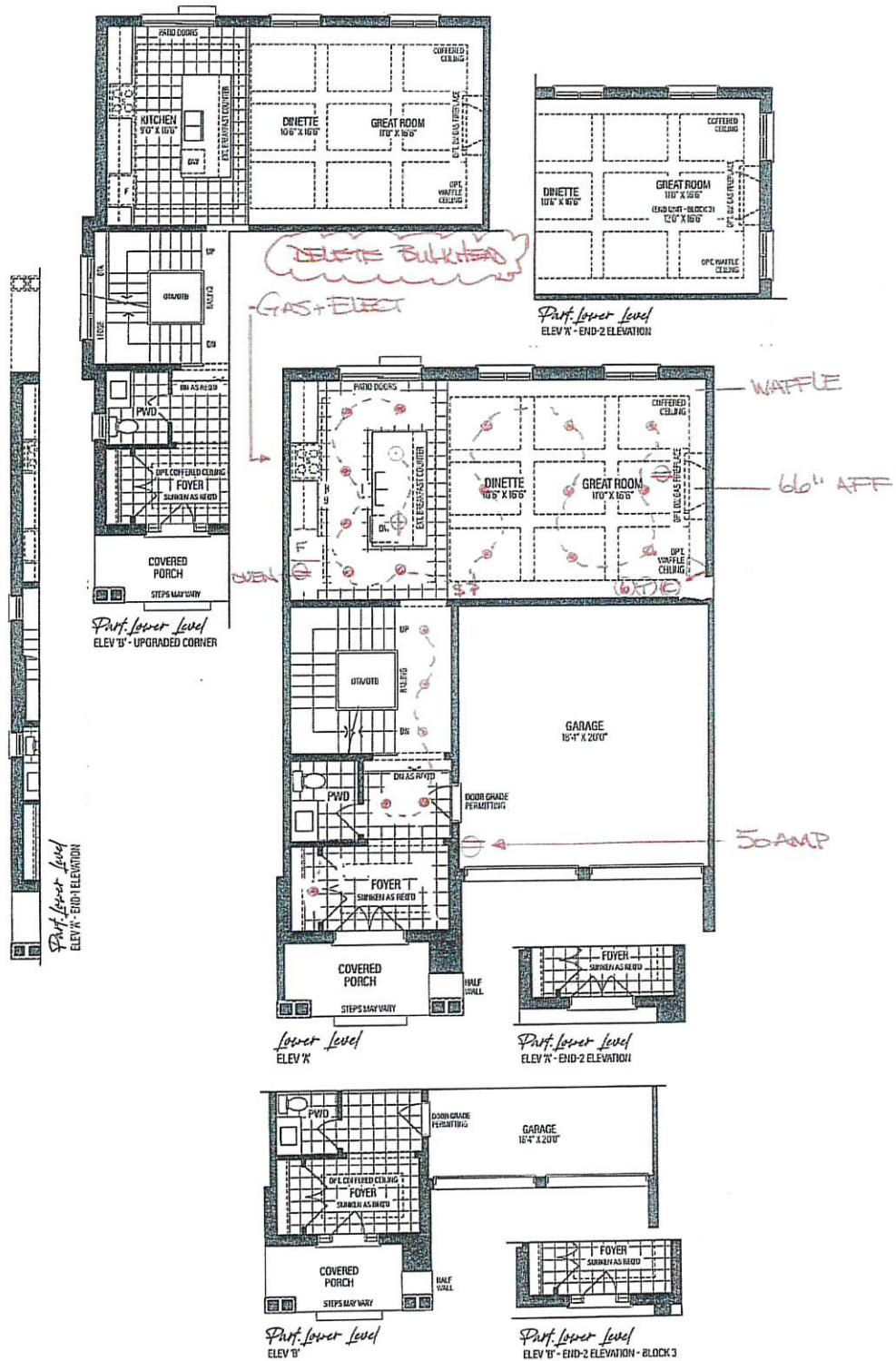
**END 1 A 2866** SQ.FT.  
INCLUDES 587 SQ.FT. OF FINISHED BASEMENT

**END 1 B 2855** SQ.FT.  
INCLUDES 587 SQ.FT. OF FINISHED BASEMENT

**END 2 A 2858** SQ.FT.  
INCLUDES 590 SQ.FT. OF FINISHED BASEMENT

**END 2 B 2846** SQ.FT.  
INCLUDES 590 SQ.FT. OF FINISHED BASEMENT

TM-3-4  
SEPT 28, 2023



VENDOR

PURCHASER

PURCHASER

SCHEDULE 'F'

RENDERINGS ARE ARTIST'S CONCEPT. FIGURES, ILLUSTRATIONS, SIZES, FEATURES AND FINISHES ARE SUBJECT TO CHANGE WITHOUT NOTICE. AREAS AND DIMENSIONS ARE APPROXIMATE AND ACTUAL USABLE FLOOR SPACE MAY VARY FROM THE STATED AREA. LAYOUT MAY BE REVERSE OF THE UNIT PURCHASED. E. & O.E. 3103



The Ashton Manor  
3-4 BEDROOMS | 4.5 BATHROOMS

ELEV. A 2825 SQ.FT.  
INCLUDES 583 SQ.FT. OF FINISHED BASEMENT

ELEV. B 2813 SQ.FT.  
INCLUDES 583 SQ.FT. OF FINISHED BASEMENT

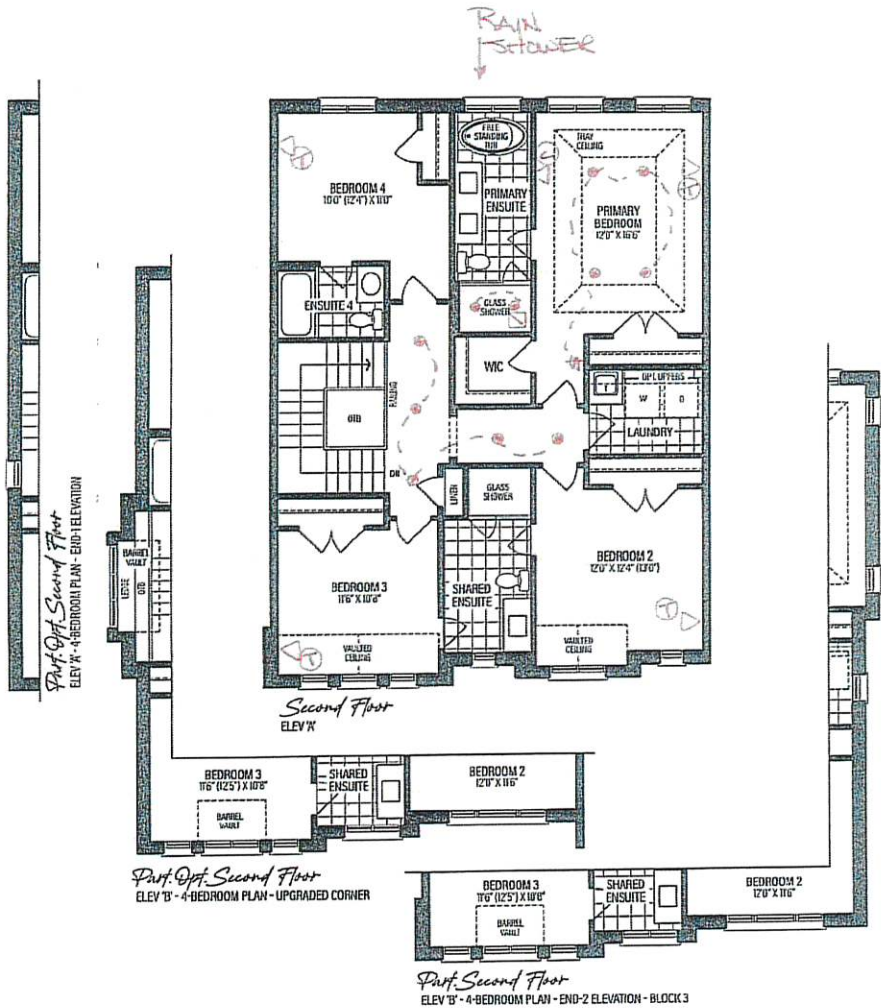
END 1 A 2866 SQ.FT.  
INCLUDES 587 SQ.FT. OF FINISHED BASEMENT

END 1 B 2855 SQ.FT.  
INCLUDES 587 SQ.FT. OF FINISHED BASEMENT

END 2 A 2858 SQ.FT.  
INCLUDES 590 SQ.FT. OF FINISHED BASEMENT

→ END 2 B 2846 SQ.FT.  
INCLUDES 590 SQ.FT. OF FINISHED BASEMENT

TM-3 - 4  
SEPT 28, 2023



VENDOR

PURCHASER

PURCHASER

SCHEDULE 'F'

RENDERINGS ARE ARTIST'S CONCEPT. FIGURES, ILLUSTRATIONS, SIZES, FEATURES AND FINISHES ARE SUBJECT TO CHANGE WITHOUT NOTICE. AREAS AND DIMENSIONS ARE APPROXIMATE AND ACTUAL USABLE FLOOR SPACE MAY VARY FROM THE STATED AREA. LAYOUT MAY BE REVERSE OF THE UNIT PURCHASED. E. & O.E. 3103





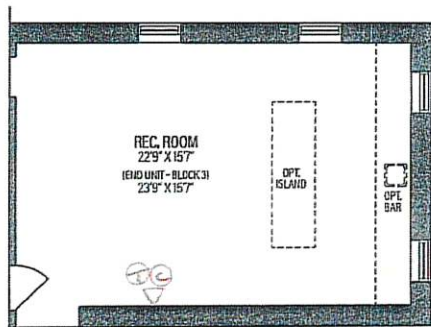
The Ashton Manor  
3-4 BEDROOMS | 4.5 BATHROOMS

ELEV. A 2825 SQ.FT.  
INCLUDES 583 SQ.FT. OF FINISHED BASEMENT  
ELEV. B 2813 SQ.FT.  
INCLUDES 583 SQ.FT. OF FINISHED BASEMENT

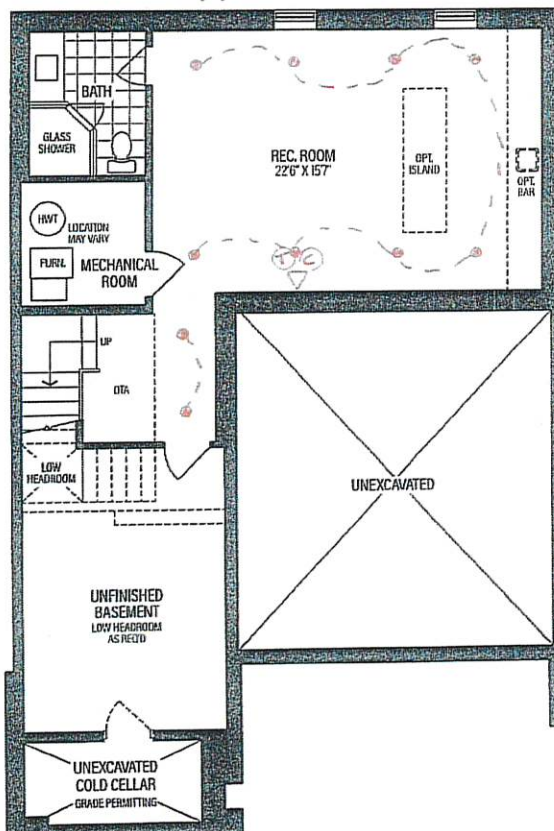
END 1 A 2866 SQ.FT.  
INCLUDES 587 SQ.FT. OF FINISHED BASEMENT  
END 1 B 2855 SQ.FT.  
INCLUDES 587 SQ.FT. OF FINISHED BASEMENT

END 2 A 2858 SQ.FT.  
INCLUDES 590 SQ.FT. OF FINISHED BASEMENT  
→END 2 B 2846 SQ.FT.  
INCLUDES 590 SQ.FT. OF FINISHED BASEMENT

TM-3-4  
28, 2023



Part. Basement  
ELEV 'A' & 'B' - END-2 ELEVATION



Basement  
ELEV 'A' & 'B'

VENDOR

PURCHASER

PURCHASER

SCHEDULE 'F'

RENDERINGS ARE ARTIST'S CONCEPT. FIGURES, ILLUSTRATIONS, SIZES, FEATURES AND FINISHES ARE SUBJECT TO CHANGE WITHOUT NOTICE. AREAS AND DIMENSIONS ARE APPROXIMATE AND ACTUAL USABLE FLOOR SPACE MAY VARY FROM THE STATED AREA. LAYOUT MAY BE REVERSE OF THE UNIT PURCHASED. E. & O.E. 3103







THE MANORS  
AT PINE VALLEY

## PLUMBING UPGRADES

### ALIGN

Ceiling Mount: 226651 (12" Arm)



Brushed Gold



Brushed Nickel



Chrome



Matte Black



Date: September 12, 2023

Lot: TM-B3-4

Location: Principal Ensuite

Signature:

Signature:

**Shower with 3-Function Transfer Valve/Trim  
and Slide Bar with Hand Shower + 7" Rain  
Showerhead From Ceiling on 12" Arm**

(includes plumbing provision for ceiling mount showerhead)  
Model T2192EP/UT4191/3887EP/226651/S176/U361CI/  
62320/A725

**GOLDPARK**  
WORTH MORE™



THE MANORS  
AT PINE VALLEY

## PLUMBING UPGRADES

### ALIGN



Brushed Gold

Brushed Nickel

Chrome

Matte Black



Date: September .2023

Lot: TM-B3-4

Location: Principal Ensuite

Signature:

Signature:

Two Handle 8" Widespread Lav  
Model T6193/69000

GOLD PARK  
WORTH MORE™





THE MANORS  
AT PINE VALLEY

PLUMBING UPGRADES

ALIGN



\*includes Tub Drain Half Kit

- Brushed Gold
- Brushed Nickel
- Chrome
- Matte Black
- ☐
- ☐
- ☐
- ☒

Date: September 12, 2023	Lot: TM-B3-4
Location: Principal Ensuite	
Signature:	Signature:

Two Handle Roman Tub  
Model T393/4796

GOLDPARK  
WORTH MORE™