

NETWORK AND WIRING

Invoice	Qty.	Description
3004 164,787 28Sep23	1	GREAT ROOM: S/I ADDITIONAL CAT6 ETHERNET OUTLET SEE PLAN FOR LOCATION
3004 164,789 28Sep23	1	GREAT ROOM: S/I CONDUIT PIPE FOR WALL MOUNT TV LOCATED APPROX. 66" A.F.F. ABOVE FIREPLACE TO CABLE LOCATION. SEE PLAN FOR LOCATION.
3004 164,794 28Sep23	1	EXTERIOR: S/I SECURITY PACKAGE - ROUGH - IN WIRING FOR: 1 RING DOOR BELL + 2 CAMERAS - 1 AT FRONT AND 1 AT REAR. COMPONENTS NOT INCLUDED. (CAT6)

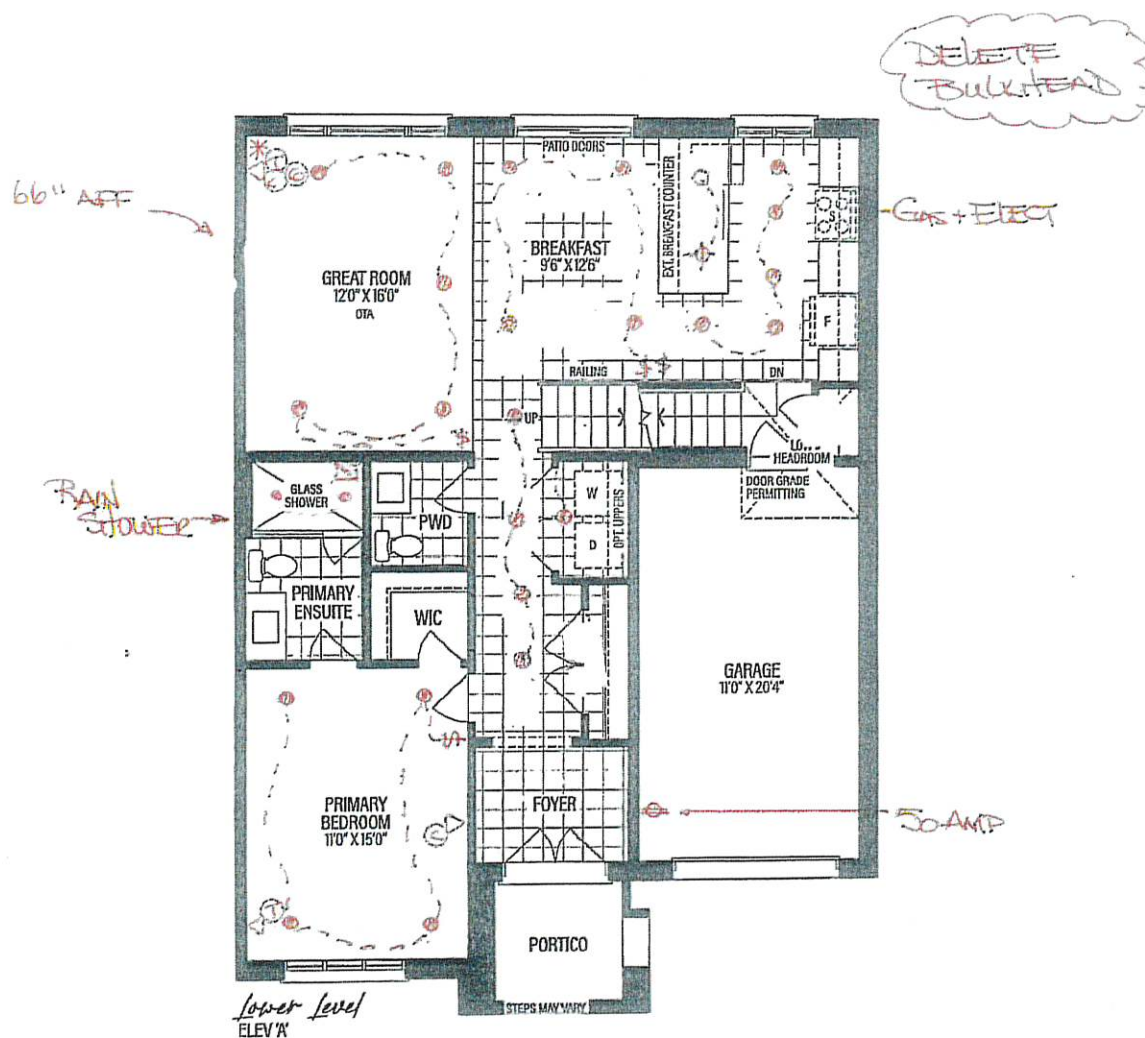
PLUMBING

Invoice	Qty.	Description
3004 164,798 28Sep23	1	KITCHEN: S/I ROUGH-IN 1/4" COLD WATER LINE TO FRIDGE
3004 28Sep23 NoCat	1	PRINCIPAL ENSUITE: UGPRADE TO MOEN 'ALIGN' SUITE - RAIN SHOWER + LAV FAUCET

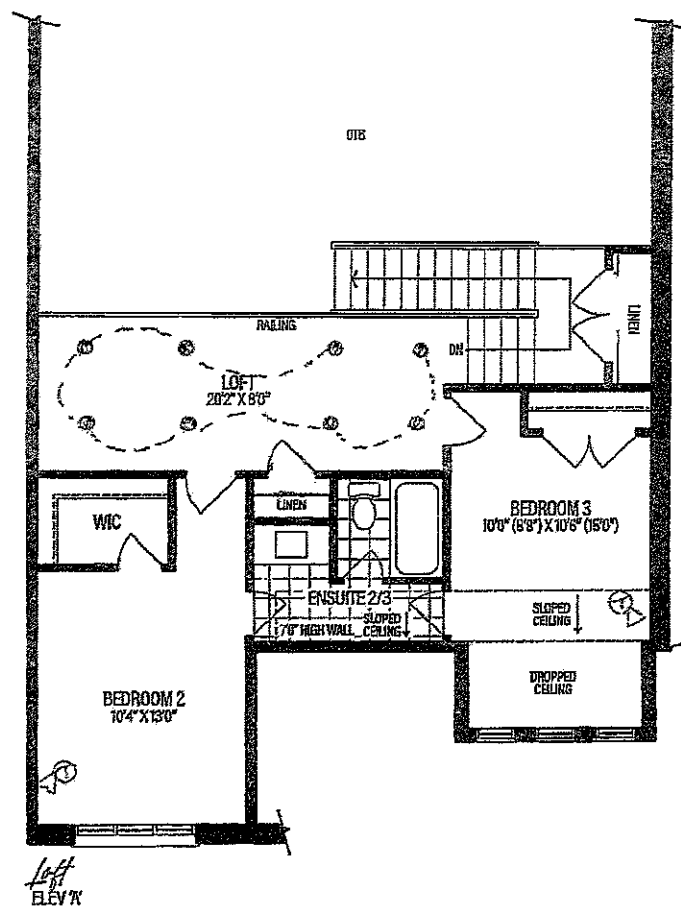
The Somerton Manor
3 BEDROOMS | 3.5 BATHROOMS

2767 SQ.FT. ELEV. A
INCLUDES 918 SQ.FT. OF FINISHED BASEMENT

TAM-16-1
SEPT 25, 2023

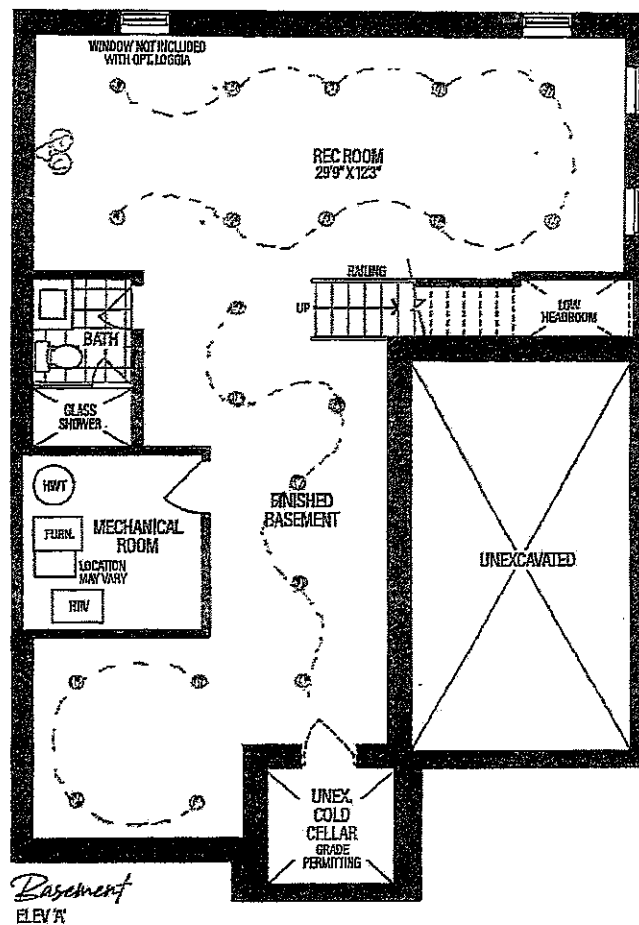


TM-16-1
SEPT 25 2023



8' doors
on 2nd Floor

TM-16-1
SEPT 23, 2023





THE MANORS
AT PINE VALLEY

PLUMBING UPGRADES

ALIGN

Ceiling Mount: 226651 (12" Arm)



Brushed Gold



Brushed Nickel



Chrome



Matte Black



Date: Sept 25, 2023

Lot: TM-8161

Location: Principal Ensuite

Signature:

Signature:

**Shower with 3-Function Transfer Valve/Trim
and Slide Bar with Hand Shower + 7" Rain
Showerhead From Ceiling on 12" Arm**
(includes plumbing provision for ceiling mount showerhead)
Model T2192EP/UT4191/3887EP/226651/S176/U361CI/
62320/A725

GOLDPARK
WORTH MORE™



THE MANORS
AT PINE VALLEY

PLUMBING UPGRADES

ALIGN



- Brushed Gold☐
- Brushed Nickel☐
- Chrome☐
- Matte Black☒

Date: Sept 25, 2023	Lot: TM-B161
Location: Principal Ensuite	
Signature:	Signature:

Two Handle 8" Widespread Lav
Model T6193/69000

GOLDPARK
WORTH MORE™