

Spec Lot Addendum(s)

Project: Pine Valley Forevergreen - Ph 2, Model: 5005-COR(B) - KNIGHTSWOOD B  
(Corner), Lot: 0170  
3, Arbordale Drive, Vaughan, ONTARIO

Addendum 03/[03] | PRE-STRUCTURAL ORDER

TIME OF SALE

Exterior		
Category	Attribute	Opt. Quantity
Exterior Brick Packages		1.00
Opt. Description		
Exterior Package Br1		
Notes		

STRUCTURAL EXTRA'S

General		
Category	Attribute	Opt. Quantity
INTERIOR DOORS AND TRIM		19.00
Opt. Description		
S/I 8FT HIGH DOOR THROUGHOUT SECOND FLOOR IN LIEU OF STANDARD HEIGHT DOOR. PRICE IS PER DOOR		
Notes		
2ND FLOOR		
NETWORK AND WIRING		1.00
Opt. Description		
S/I CONDUIT PIPE FROM ATTIC TO BASEMENT   APPROX. LOCATION FROM CENTER OF ATTIC TO ELECTRICAL PANEL.		
Notes		
GASLINE		1.00
Opt. Description		
GAS LINE ROUGH-IN - MAIN FLOOR FOR APPLIANCE		
Notes		
FOR FUTURE GAS APPLIANCE		
Basement (Unfinished) Area		
Category	Attribute	Opt. Quantity
CONCRETE AND DRAIN		1.00
Opt. Description		
S/I BACK -FLOW PREVENTER VALVE (BASEMENT)		
Notes		
BASEMENT WINDOWS		3.00
Opt. Description		
S/I BASEMENT WINDOW SIZE 30" X 24" IN LIEU OF STANDARD 10" - WHITE. WINDOW WELLS MAY BE REQUIRED.		
Notes		
Principal Ensuite		
Category	Attribute	Opt. Quantity
FRAMING		2.00
Opt. Description		
S/I RECESSED SHOWER NICHE [SHAMPOO SHELF] - COMPLETE WITH QUARTZ ON 4 SIDES, STANDARD TILE, APPROX. 12 X 42 INSTALLED VERTICALLY WITH QUARTZ SHELF DIVIDERS. BASED ON STANDARD FINISHES		
Notes		

Spec Lot Addendum(s)

Project: Pine Valley Forevergreen - Ph 2, Model: 5005-COR(B) - KNIGHTSWOOD B  
(Corner), Lot: 0170  
3, Arbordale Drive, Vaughan, ONTARIO

Exterior		
Category	Attribute	Opt. Quantity
EXT, WINDOWS AND DOORS		3.00
Opt. Description		
INCREASE EXSITING REAR GARDEN DOOR OR FRENCH GARDEN DOOR HEIGHT TO APPROX. 96" - NO TRANSOM IF APPLICABLE.		
Notes		
***96" SLIDING PATIO DOORS		
Foyer		
Category	Attribute	Opt. Quantity
FRAMING		1.00
Opt. Description		
S/I COFFERED CEILING (OPTIONAL PER HALLWAY)		
Notes		
Great Room		
Category	Attribute	Opt. Quantity
WAFFLE CEILING		1.00
Opt. Description		
WAFFLE CEILING, BEAM DETAIL AS PER PLAN (6 BOXES) OPTION # 1 CTRB07		
Notes		
FRAMING		1.00
Opt. Description		
S/I COFFERED CEILING (OPTIONAL PER ROOM)		
Notes		
NETWORK AND WIRING		1.00
Opt. Description		
S/I CONDUIT PIPE FOR WALL MOUNT TV   LOCATED APPROX. 66" A.F.F. ABOVE FIREPLACE THROUGH BASEMENT TO CABLE LOCATION. SEE PLAN FOR LOCATION.		
Notes		
Library		
Category	Attribute	Opt. Quantity
FRAMING		1.00
Opt. Description		
S/I COFFERED CEILING (OPTIONAL PER ROOM)		
Notes		
WAFFLE CEILING		1.00
Opt. Description		
WAFFLE CEILING , BEAM DETAIL AS PER PLAN ( 4 BOXES) OPTION # 1 CTRB07		
Notes		

PLUMBING / FIXTURES

Principal Ensuite		
Category	Attribute	Opt. Quantity
FIXTURES		2.00
Opt. Description		

Spec Lot Addendum(s)

Project: Pine Valley Forevergreen - Ph 2, Model: 5005-COR(B) - KNIGHTSWOOD B  
(Corner), Lot: 0170  
3, Arbordale Drive, Vaughan, ONTARIO

Category	Attribute	Opt. Quantity
Align 2-Handle Widespread Lav - BL		
Notes		
FIXTURES		1.00
Opt. Description		
Align 3-Function Rain Shwr/Hand Shwr/S.Bar - BL		
Notes		
FIXTURES		1.00
Opt. Description		
Align Free Standing Tub Filler - BL		
Notes		

ELECTRICAL

Principal Bedroom		
Category	Attribute	Opt. Quantity
ELECTRICAL		4.00
Opt. Description		
S/I 4" E/S LED INTERIOR POT LIGHT - EACH. WHITE		
Notes		
IN ADDITION TO STANDARD CEILING LIGHT, SEE PLAN FOR LOCATION.		
ELECTRICAL SWITCHES		1.00
Opt. Description		
S/I ADDITIONAL INTERIOR SWITCH. SINGLE POLE		
Notes		
FOR POTLIGHT		
Breakfast Room		
Category	Attribute	Opt. Quantity
ELECTRICAL		3.00
Opt. Description		
S/I 4" E/S LED INTERIOR POT LIGHT - EACH. WHITE		
Notes		
IN ADDITION TO STANDARD CEILING LIGHT, SEE PLAN FOR LOCATION.		
ELECTRICAL SWITCHES		1.00
Opt. Description		
S/I ADDITIONAL INTERIOR SWITCH. SINGLE POLE		
Notes		
FOR POTLIGHTS		
Dining Room		
Category	Attribute	Opt. Quantity
ELECTRICAL		4.00
Opt. Description		
S/I 4" E/S LED INTERIOR POT LIGHT - EACH. WHITE		
Notes		
IN ADDITION TO STD CEILING LIGHT, SEE PLAN FOR LOCATION.		

Spec Lot Addendum(s)

Project: Pine Valley Forevergreen - Ph 2, Model: 5005-COR(B) - KNIGHTSWOOD B  
(Corner), Lot: 0170  
3, Arbordale Drive, Vaughan, ONTARIO

Category	Attribute	Opt. Quantity
ELECTRICAL SWITCHES		1.00
Opt. Description		
S/I ADDITIONAL INTERIOR SWITCH. SINGLE POLE		
Notes		
FOR POTLIGHTS		
Dressing Room		
Category	Attribute	Opt. Quantity
ELECTRICAL		8.00
Opt. Description		
S/I 4" E/S LED INTERIOR POT LIGHT - EACH. WHITE		
Notes		
IN ADDITION TO STD CEILING LIGHT, SEE PLAN FOR LOCATION.		
ELECTRICAL SWITCHES		1.00
Opt. Description		
S/I 3-WAY SWITCH (LIGHT OPERATED BY 2 DIFFERENT SWITCHES)		
Notes		
Principal Ensuite		
Category	Attribute	Opt. Quantity
ELECTRICAL SWITCHES		1.00
Opt. Description		
S/I ADDITIONAL INTERIOR SWITCH. SINGLE POLE		
Notes		
FOR THE LIGHT OVER THE TUB. SEE PLAN FOR LOCATION.		
ELECTRICAL		7.00
Opt. Description		
S/I 4" E/S LED INTERIOR POT LIGHT - EACH. WHITE		
Notes		
IN LIEU OF STD CEILING LIGHT, SEE PLAN FOR LOCATION.		
ELECTRICAL		1.00
Opt. Description		
S/I 4" E/S LED INTERIOR POT LIGHT - EACH. WHITE		
Notes		
IN LIEU OF STD CEILING LIGHT, USE STD SWITCH. SEE PLAN FOR LOCATION.		
ELECTRICAL		1.00
Opt. Description		
S/I 4" E/S LED INTERIOR POT LIGHT - EACH. WHITE		
Notes		
IN LIEU OF STD CEILING LIGHT, USE STD SWITCH. SEE PLAN FOR LOCATION.		
ELECTRICAL		1.00
Opt. Description		
S/I 4" E/S LED INTERIOR POT LIGHT - EACH. WHITE		
Notes		
FOR LIGHT IN SHOWER, ON SAME SWITCH AS STD. SEE PLAN FOR LOCATION.		

Spec Lot Addendum(s)

Project: Pine Valley Forevergreen - Ph 2, Model: 5005-COR(B) - KNIGHTSWOOD B  
(Corner), Lot: 0170  
3, Arbordale Drive, Vaughan, ONTARIO

Great Room		
Category	Attribute	Opt. Quantity
ELECTRICAL		6.00
Opt. Description		
S/I 4" E/S LED INTERIOR POT LIGHT - EACH. WHITE		
Notes		
IN LIEU OF STD CEILING LIGHT, USE STD SWITCH. SEE PALN FOR LOCATION.		
ELECTRICAL OUTLETS		1.00
Opt. Description		
S/I 110V WALL RECEPTACLE (NOT ON SEPARATE CIRCUIT)		
Notes		
LOCATE ABOVE FIREPLACE, APPROX 66" A.F.F. SEE PLAN FOR LOCATION.		
Hall Main Floor		
Category	Attribute	Opt. Quantity
ELECTRICAL		6.00
Opt. Description		
S/I 4" E/S LED INTERIOR POT LIGHT - EACH. WHITE		
Notes		
IN LIEU OF STD CEILING LIGHT, USE STD SWITCH. SEE PLAN FOR LOCATION.		
ELECTRICAL SWITCHES		1.00
Opt. Description		
S/I HINGE SWITCH - EACH INCLUDES 1 LED POTLIGHT (DOOR ACTIVATED)		
Notes		
Hall 2nd Level		
Category	Attribute	Opt. Quantity
ELECTRICAL		6.00
Opt. Description		
S/I 4" E/S LED INTERIOR POT LIGHT - EACH. WHITE		
Notes		
IN LIEU OF STD CEILING LIGHT, USE STD SWITCH. SEE PLAN FOR LOCATION.		
Kitchen		
Category	Attribute	Opt. Quantity
ELECTRICAL		1.00
Opt. Description		
BASE STND - 8 INCLUDED 4" WHITE E/S LED POT LIGHTS with (1) SWITCH. TO BE LOCATED ON MAIN FLOOR IN (1) ROOM ONLY.		
Notes		
ELECTRICAL OUTLETS		1.00
Opt. Description		
S/I 240V (50 AMP) RECEPTACLE ON A SEPARATE CIRCUIT		
Notes		
FOR FUTURE WALL OVEN		
ELECTRICAL OUTLETS		1.00
Opt. Description		
Capped Ceiling Outlet		
Notes		

Spec Lot Addendum(s)

Project: Pine Valley Forevergreen - Ph 2, Model: 5005-COR(B) - KNIGHTSWOOD B  
(Corner), Lot: 0170  
3, Arbordale Drive, Vaughan, ONTARIO

Category	Attribute	Opt. Quantity
RELOCATE STD CEILING FIXTURE. SEE PLAN FOR LOCATION.		
ELECTRICAL OUTLETS		2.00
Opt. Description		
Capped Ceiling Outlet		
Notes		
LOCATE APPROX CENTERED ABOVE ISLAND, USE SAME AS STD SWITCH. SEE PLAN FOR LOCATION.		
Library		
Category	Attribute	Opt. Quantity
ELECTRICAL		4.00
Opt. Description		
S/I 4" E/S LED INTERIOR POT LIGHT - EACH. WHITE		
Notes		
IN LIEU OF STD CEILING LIGHT, USE STD SWITCH. SEE PLAN FOR LOCATION.		

## Spec Lot Addendum(s)

Project: Pine Valley Forevergreen - Ph 2, Model: 5005-COR(B) - KNIGHTSWOOD B  
(Corner), Lot: 0170  
3, Arbordale Drive, Vaughan, ONTARIO

---

**This is your direction to install the above extras in accordance with the following terms and conditions:**

1. In the event the work on the house has progressed beyond the point where the items covered by this extra agreement cannot be installed without entailing any unusual expense, this order is to be cancelled and any deposit paid in connection with same is to be refunded to the purchaser.
2. The Vendor will undertake to incorporate the work covered by the sales extra in the construction of the house but will not be liable to the purchaser in anyway, if for any reason the work covered by the extra is not carried out. In that event, any monies paid in connection with same shall be returned to the purchaser.
3. It is understood and agreed that if for any reason whatsoever the transaction of the Purchase and Sale is not completed by the purchaser, the total cost of the extras ordered are not refundable to the Purchaser(s).
4. Extras or changes will not be processed unless signed by the Vendor.
5. These extras may not be amended without the written consent of Gold Park Homes.
6. The purchaser(s) and the builder acknowledge and agree that this "Purchaser Extra" form shall not be part of the Agreement of Purchase and Sale entered into between them, nor an addendum thereto.
7. Prices are estimates only and guaranteed for a period of 5 business days.
8. Post-dated cheques with NOT be accepted.
9. Estimates or orders will NOT be accepted once construction has commenced.
10. All extras/selections are final, checked and approved by purchaser. Purchaser has reviewed and confirmed there are no missing or outstanding items.
11. Any inquiry to re-open a file and/or request a change to any extra or selection is subject to a minimum fee of \$1500.00 (fifteen hundred dollars).
12. No estimates will be considered an official order until submitted as a signed Purchaser Extra order, accompanied by payment in full.
13. Purchaser has reviewed this addendum for accuracy. There are no outstanding items.
14. Once extras/selections are signed, they are considered final. Absolutely no changes or deletions will be accepted regardless of when selections are finalized or the stage of construction.

SCHEDULE 'F'

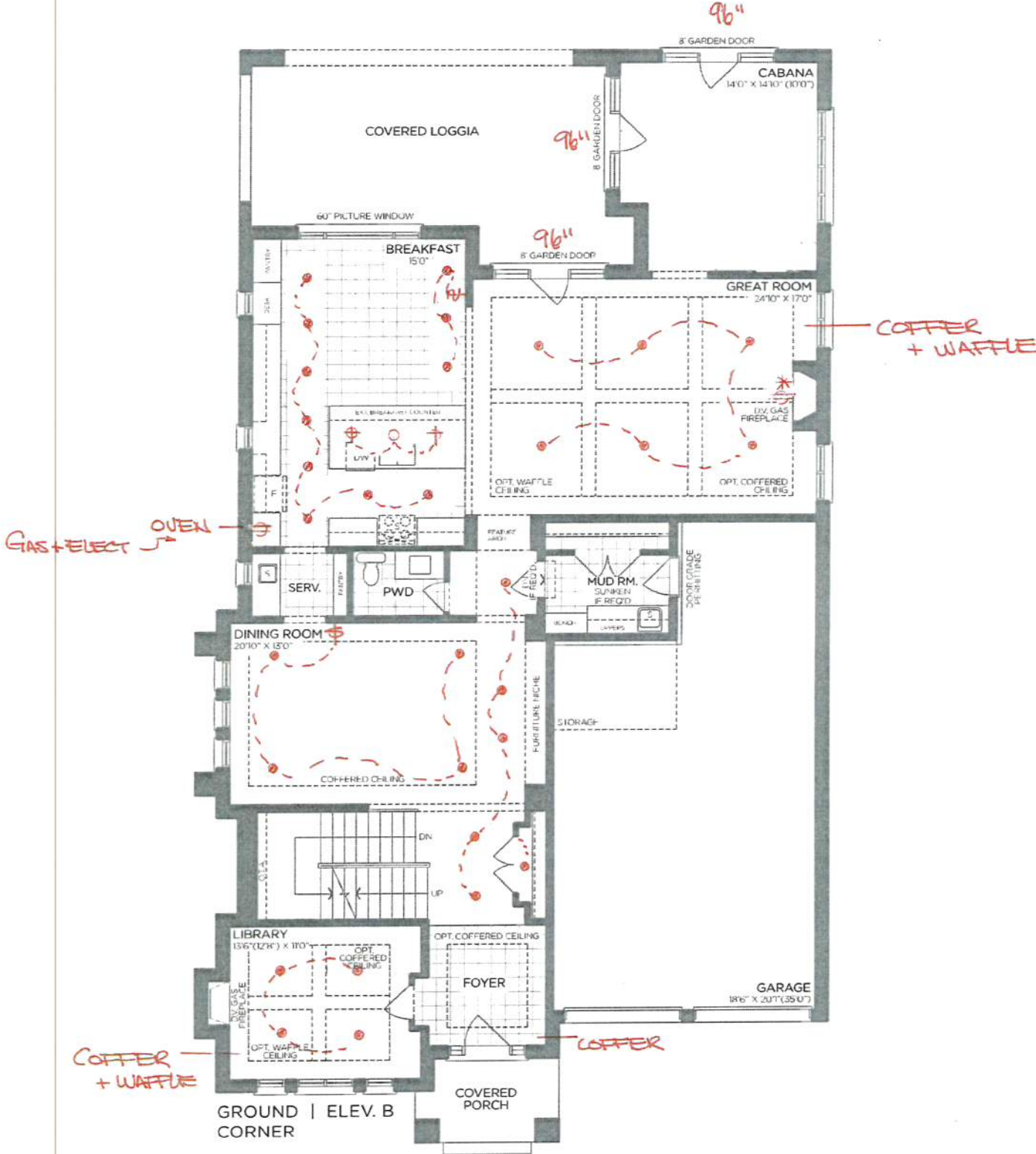


PJ2-170  
MAY 5 2023

The  
Knightswood  
50' SERIES

Lot Specific for Lot 170

Elevation B • 4,532sq.ft. Plus 94  
sq.ft. Fin. Foyer Basement



VENDOR

PURCHASER

PURCHASER

GOLDPARK  
WORTH MORE™

Prices, figures, illustrations, sizes, features and finishes are subject to change without notice. Areas and dimensions are approximate and actual usable floor space may vary from the stated area. Layout may be reverse of the unit purchased. E. & O.E. 5005



SCHEDULE 'F'



PV2-170  
MAY 5 2023

The  
Knightswood  
50' SERIES

Lot Specific for Lot 170

Elevation B • 4,532sq.ft. Plus 94  
sq.ft. Fin. Foyer Basement

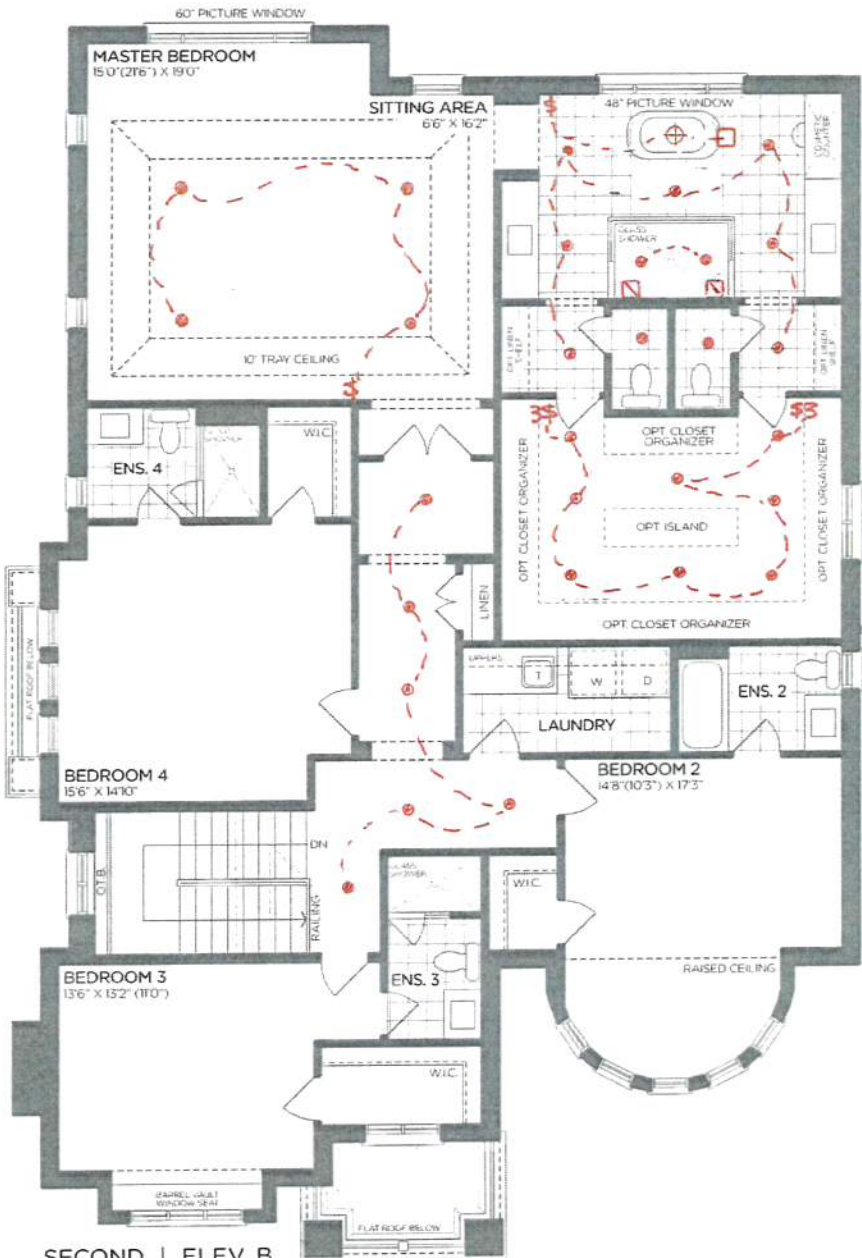
8' DOORS  
thru out  
2nd floor



PART. OPT. ENSUITE



PART. OPT. WETBAR  
SITTING AREA



SECOND | ELEV. B  
CORNER

VENDOR

PURCHASER

PURCHASER

GOLDPARK  
WORTH MORE™

Prices, figures, illustrations, sizes, features and finishes are subject to change without notice. Areas and dimensions are approximate and actual usable floor space may vary from the stated area. Layout may be reverse of the unit purchased. E. & O.E. 5005

SCHEDULE 'F'

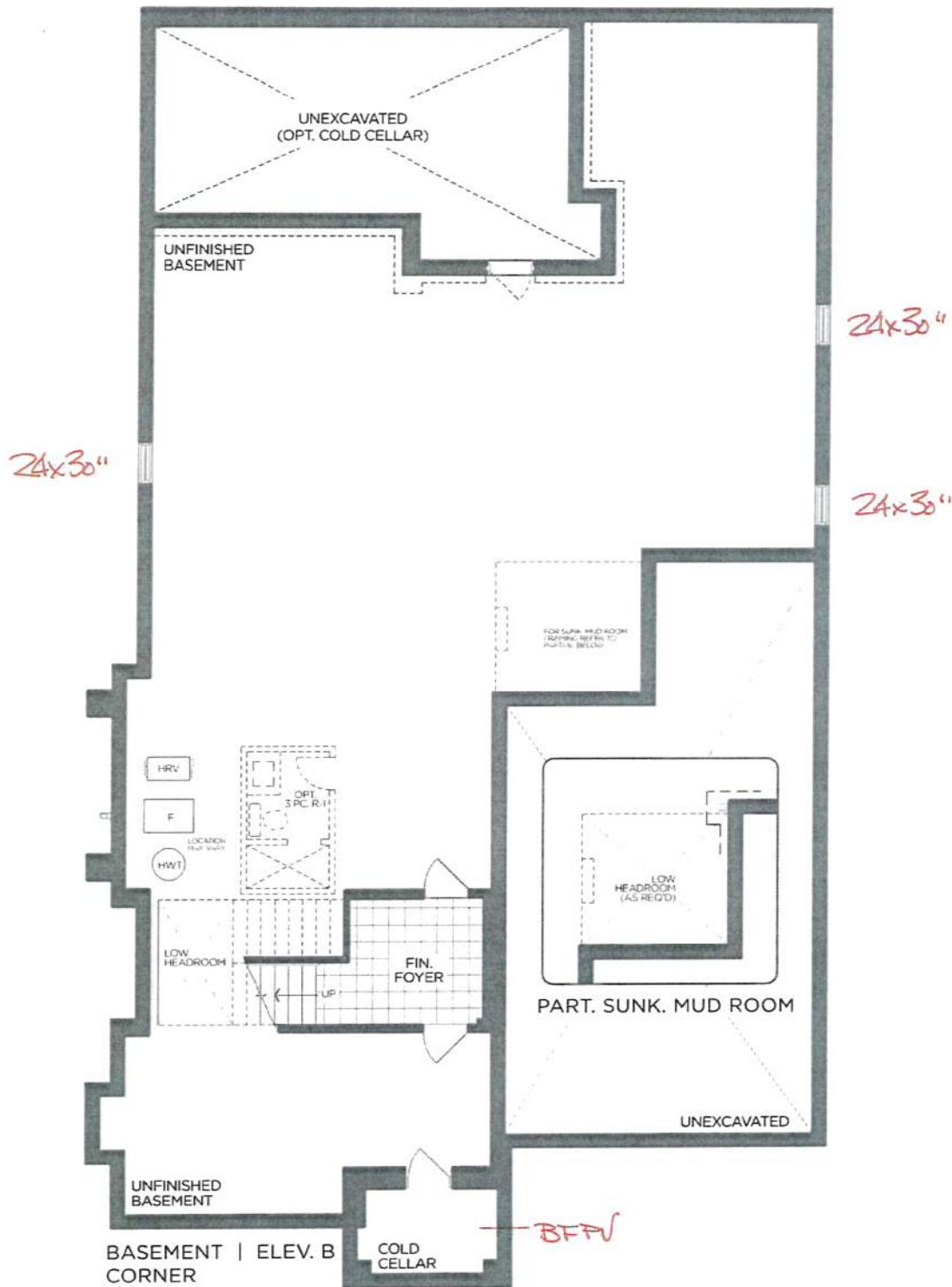


PV2-170  
MAY 5 2023

The  
Knightswood  
50' SERIES

Lot Specific for Lot 170

Elevation B • 4,532 sq.ft. *Plus 94 sq.ft. Fin. Foyer Basement*



VENDOR

PURCHASER

PURCHASER

GOLDPARK  
WORTH MORE™

Prices, figures, illustrations, sizes, features and finishes are subject to change without notice. Areas and dimensions are approximate and actual usable floor space may vary from the stated area. Layout may be reverse of the unit purchased. E. & O.E. 5005

PLUMBING UPGRADES

ALIGN

Ceiling Mount: 226651 (12" Arm)



- Brushed Gold☐
- Brushed Nickel☐
- Chrome☐
- Matte Black☒

Date: May 05, 2023	Lot: 170
Location: Principal Gnsuite	
Signature:	Signature:

Shower with 3-Function Transfer Valve/Trim  
and Slide Bar with Hand Shower + 7" Rain  
Showerhead From Ceiling on 12" Arm  
(includes plumbing provision for ceiling mount showerhead)  
Model T2192EP/UT4191/3887EP/226651/S176/U361CI/  
62320/A725



PINE VALLEY  
FOREVERGREEN

## PLUMBING UPGRADES

### ALIGN



Brushed Gold

Brushed Nickel

Chrome

Matte Black

☐☐☐☒ x 2

Date: May 05, 2023	Lot: 170
Location: Principal Ensuite	
Signature:	Signature:

Two Handle 8" Widespread Lav  
Model T6193/69000

GOLDPARK  
WORTH MORE™





PINE VALLEY  
FOREVERGREEN

PLUMBING UPGRADES

ALIGN



- Brushed Gold ☐
- Brushed Nickel ☐
- Chrome ☐
- Matte Black ☒

Date: May 05, 2023	Lot: 170
Location: Principal Gnsuite	
Signature:	Signature:

Freestanding Floor-Mounted Tub Filler  
Model 395/TS50100

GOLDPARK  
WORTH MORE™

