

Spec Lot Addendum(s)

Project: Pine Valley Forevergreen - Ph 2, Model: 5003(C) - OAKGROVE, Lot: 0055
30, Nick Deluca Court, Vaughan, ONTARIO

Addendum 02/[02] | STRUCTURAL ORDER

STRUCTURAL EXTRA'S

General		
Category	Attribute	Opt. Quantity
INTERIOR DOORS AND TRIM		20.00
Opt. Description		
S/I 8FT HIGH DOOR THROUGHOUT SECOND FLOOR IN LIEU OF STANDARD HEIGHT DOOR. PRICE IS PER DOOR		
Notes		
THRU OUT 2ND FLOOR		
Basement (Unfinished) Area		
Category	Attribute	Opt. Quantity
BASEMENT WINDOWS		4.00
Opt. Description		
S/I BASEMENT WINDOW SIZE 30" X 24" IN LIEU OF STANDARD 10" - WHITE. WINDOW WELLS MAY BE REQUIRED.		
Notes		
CONCRETE AND DRAIN		1.00
Opt. Description		
S/I BACK -FLOW PREVENTER VALVE (BASEMENT)		
Notes		
Principal Ensuite		
Category	Attribute	Opt. Quantity
FRAMING		2.00
Opt. Description		
S/I RECESSED SHOWER NICHE [SHAMPOO SHELF] - COMPLETE WITH QUARTZ ON 4 SIDES, STANDARD TILE, APPROX. 12 X 42 INSTALLED VERTICALLY WITH QUARTZ SHELF DIVIDERS. BASED ON STANDARD FINISHES		
Notes		
SEE PLAN FOR LOCATION		
Exterior		
Category	Attribute	Opt. Quantity
NETWORK AND WIRING		1.00
Opt. Description		
S/I ROUGH - IN WIRING: PACKAGE OFFERING FOR 5 CAMERAS + (1) DOOR BELL (CAMERAS & DOOR BELL FIXTURES NOT INCLUDED)		
Notes		
Foyer		
Category	Attribute	Opt. Quantity
FRAMING		1.00
Opt. Description		
S/I COFFERED CEILING (OPTIONAL PER HALLWAY)		
Notes		
Great Room		
Category	Attribute	Opt. Quantity
FRAMING		1.00
Opt. Description		
S/I COFFERED CEILING (OPTIONAL PER ROOM)		

Spec Lot Addendum(s)

Project: Pine Valley Forevergreen - Ph 2, Model: 5003(C) - OAKGROVE, Lot: 0055
30, Nick Deluca Court, Vaughan, ONTARIO

Category	Attribute	Opt. Quantity
Notes		
NETWORK AND WIRING		1.00
Opt. Description		
S/I ADDITIONAL CAT6 ETHERNET OUTLET		
Notes		
NETWORK AND WIRING		1.00
Opt. Description		
S/I CONDUIT PIPE FOR WALL MOUNT TV LOCATED APPROX. 66" A.F.F. ABOVE FIREPLACE THROUGH BASEMENT TO CABLE LOCATION. SEE PLAN FOR LOCATION.		
Notes		
SEE PLAN FOR LOCATION		
Kitchen		
Category	Attribute	Opt. Quantity
GASLINE		1.00
Opt. Description		
GAS LINE ROUGH-IN - MAIN FLOOR FOR APPLIANCE		
Notes		
Living Room		
Category	Attribute	Opt. Quantity
FRAMING		1.00
Opt. Description		
S/I COFFERED CEILING (OPTIONAL PER ROOM)		
Notes		
NETWORK AND WIRING		1.00
Opt. Description		
S/I ADDITIONAL CAT6 ETHERNET OUTLET		
Notes		
Prin Bedroom Sitting Room		
Category	Attribute	Opt. Quantity
NETWORK AND WIRING		1.00
Opt. Description		
S/I ADDITIONAL CAT6 ETHERNET OUTLET		
Notes		

COLOURS & SELECTIONS

Great Room		
Category	Attribute	Opt. Quantity
Selection		1.00
Opt. Description		
Selection Option		
Notes		
GREAT ROOM ADD 'MODERN' 6 BOX WAFFLE		
FIREPLACE		1.00
Opt. Description		

Spec Lot Addendum(s)

Project: Pine Valley Forevergreen - Ph 2, Model: 5003(C) - OAKGROVE, Lot: 0055
30, Nick Deluca Court, Vaughan, ONTARIO

Category	Attribute	Opt. Quantity
S/I MAIN FLOOR QUARTZ 42" DIRECT VENT GAS FIREPLACE . NOT INCLUSIVE OF MANTEL. INCLUDES FIREPLACE BOX-OUT INTO ROOM		
Notes		
Living Room		
Category	Attribute	Opt. Quantity
Selection		1.00
Opt. Description		
Selection Option		
Notes		
ADD 'MODERN' 4-BOX WAFFLE CEILING		

PLUMBING / FIXTURES

Principal Ensuite		
Category	Attribute	Opt. Quantity
FIXTURES		2.00
Opt. Description		
Align 2-Handle Widespread Lav - BL		
Notes		
FIXTURES		1.00
Opt. Description		
Align 3-Function Rain Shwr/Hand Shwr/S.Bar - BL		
Notes		
FIXTURES		1.00
Opt. Description		
Align Free Standing Tub Filler - BL		
Notes		

ELECTRICAL

Principal Bedroom

Category	Attribute	Opt. Quantity
ELECTRICAL		4.00
Opt. Description		
S/I 4" E/S LED INTERIOR POT LIGHT - EACH. WHITE		
Notes		
IN ADDITION TO STANDARD CEILING LIGHT, SEE PLAN FOR LOCATION		
ELECTRICAL SWITCHES		1.00
Opt. Description		
S/I ADDITIONAL INTERIOR SWITCH. SINGLE POLE		
Notes		
FOR POTLIGHTS		

Dining Room

Category	Attribute	Opt. Quantity
ELECTRICAL		4.00
Opt. Description		

Spec Lot Addendum(s)

Project: Pine Valley Forevergreen - Ph 2, Model: 5003(C) - OAKGROVE, Lot: 0055
30, Nick Deluca Court, Vaughan, ONTARIO

Category	Attribute	Opt. Quantity
S/I 4" E/S LED INTERIOR POT LIGHT - EACH. WHITE		
Notes		
IN ADDITION TO STANDARD CEILING LIGHT. SEE PLAN FOR LOCATION		
ELECTRICAL SWITCHES		1.00
Opt. Description		
S/I ADDITIONAL INTERIOR SWITCH. SINGLE POLE		
Notes		
FOR POTLIGHTS		
Principal Ensuite		
Category	Attribute	Opt. Quantity
ELECTRICAL		1.00
Opt. Description		
S/I TUB/SHOWER POT LIGHT: 4 INCH RECESSED POT LIGHT COMPLETE WITH SWITCH		
Notes		
IN ADDITION TO STANDARD, ON SAME SWITCH AS STANDARD SHOWER LIGHT		
ELECTRICAL		1.00
Opt. Description		
S/I 4" E/S LED INTERIOR POT LIGHT - EACH. WHITE		
Notes		
IN ADDITION TO STANDARD VANITY LIGHT, USE STANDARD SWITCH. SEE PLAN FOR LOCATION		
Garage		
Category	Attribute	Opt. Quantity
ELECTRICAL OUTLETS		1.00
Opt. Description		
S/I 240V (50 AMP) RECEPTACLE ON A SEPARATE CIRCUIT		
Notes		
FOR FUTURE CAR CHARGER		
Great Room		
Category	Attribute	Opt. Quantity
ELECTRICAL		6.00
Opt. Description		
S/I 4" E/S LED INTERIOR POT LIGHT - EACH. WHITE		
Notes		
IN LIEU OF STANDARD CEILING LIGHT, USE STANDARD SWITCH. SEE PLAN FOR LOCATION		
ELECTRICAL OUTLETS		1.00
Opt. Description		
S/I 110V WALL RECEPTACLE (NOT ON SEPARATE CIRCUIT)		
Notes		
LOCATE APPROX 66" A.F.F. ABOVE FIREPLACE, FOR FUTURE TV		
Hall Main Floor		
Category	Attribute	Opt. Quantity
ELECTRICAL		5.00
Opt. Description		
S/I 4" E/S LED INTERIOR POT LIGHT - EACH. WHITE		
Notes		

Spec Lot Addendum(s)

Project: Pine Valley Forevergreen - Ph 2, Model: 5003(C) - OAKGROVE, Lot: 0055
30, Nick Deluca Court, Vaughan, ONTARIO

Category	Attribute	Opt. Quantity
IN LIEU OF STANDARD CEILING LIGHT, USE STANDARD SWITCH. SEE PLAN FOR LOCATION		
Hall 2nd Level		
Category	Attribute	Opt. Quantity
ELECTRICAL		8.00
Opt. Description		
S/I 4" E/S LED INTERIOR POT LIGHT - EACH. WHITE		
Notes		
IN LIEU OF STANDARD CEILING LIGHT, USE STANDARD SWITCH. SEE PLAN FOR LOCATION		
Kitchen		
Category	Attribute	Opt. Quantity
ELECTRICAL		1.00
Opt. Description		
RELOCATE STANDARD CEILING MOUNT FIXTURE		
Notes		
LOCATE APPROX CENTRED TO ISLAND, SEE PLAN FOR LOCATION		
ELECTRICAL OUTLETS		1.00
Opt. Description		
S/I 220V (40 AMP) RECEPTACLE ON A SEPARATE CIRCUIT		
Notes		
FOR FUTURE WALL OVEN COMBO - SEE PLAN FOR LOCATION		
ELECTRICAL OUTLETS		1.00
Opt. Description		
S/I 110V WALL RECEPTACLE ON SEPARATE CIRCUIT		
Notes		
FOR FUTURE GAS COOKTOP		
ELECTRICAL OUTLETS		1.00
Opt. Description		
Capped Ceiling Outlet		
Notes		
LOCATE APPROX CENTERED ABOVE ISLAND, USE SAME SWITCH AS STANDARD CEILING LIGHT. SEE PLAN FOR LOCATION		
ELECTRICAL		1.00
Opt. Description		
BASE STND - 8 INCLUDED 4" WHITE E/S LED POT LIGHTS with (1) SWITCH. TO BE LOCATED ON MAIN FLOOR IN (1) ROOM ONLY.		
Notes		
SEE PLAN FOR LOCATION		
Living Room		
Category	Attribute	Opt. Quantity
ELECTRICAL		4.00
Opt. Description		
S/I 4" E/S LED INTERIOR POT LIGHT - EACH. WHITE		
Notes		
IN LIEU OF STANDARD CEILING LIGHT, USE STANDARD SWITCH. SEE PLAN FOR LOCATION		
Prin Bedroom Sitting Room		
Category	Attribute	Opt. Quantity
ELECTRICAL		4.00

Spec Lot Addendum(s)

Project: Pine Valley Forevergreen - Ph 2, Model: 5003(C) - OAKGROVE, Lot: 0055
30, Nick Deluca Court, Vaughan, ONTARIO

Category	Attribute	Opt. Quantity
Opt. Description		
S/I 4" E/S LED INTERIOR POT LIGHT - EACH. WHITE		
Notes		
IN LIEU OF STANDARD CEILING LIGHT, USE STANDARD SWITCH. SEE PLAN FOR LOCATION		

Spec Lot Addendum(s)

Project: Pine Valley Forevergreen - Ph 2, Model: 5003(C) - OAKGROVE, Lot: 0055
30, Nick Deluca Court, Vaughan, ONTARIO

This is your direction to install the above extras in accordance with the following terms and conditions:

1. In the event the work on the house has progressed beyond the point where the items covered by this extra agreement cannot be installed without entailing any unusual expense, this order is to be cancelled and any deposit paid in connection with same is to be refunded to the purchaser.
2. The Vendor will undertake to incorporate the work covered by the sales extra in the construction of the house but will not be liable to the purchaser in anyway, if for any reason the work covered by the extra is not carried out. In that event, any monies paid in connection with same shall be returned to the purchaser.
3. It is understood and agreed that if for any reason whatsoever the transaction of the Purchase and Sale is not completed by the purchaser, the total cost of the extras ordered are not refundable to the Purchaser(s).
4. Extras or changes will not be processed unless signed by the Vendor.
5. These extras may not be amended without the written consent of Gold Park Homes.
6. The purchaser(s) and the builder acknowledge and agree that this "Purchaser Extra" form shall not be part of the Agreement of Purchase and Sale entered into between them, nor an addendum thereto.
7. Prices are estimates only and guaranteed for a period of 5 business days.
8. Post-dated cheques with NOT be accepted.
9. Estimates or orders will NOT be accepted once construction has commenced.
10. All extras/selections are final, checked and approved by purchaser. Purchaser has reviewed and confirmed there are no missing or outstanding items.
11. Any inquiry to re-open a file and/or request a change to any extra or selection is subject to a minimum fee of \$1500.00 (fifteen hundred dollars).
12. No estimates will be considered an official order until submitted as a signed Purchaser Extra order, accompanied by payment in full.
13. Purchaser has reviewed this addendum for accuracy. There are no outstanding items.
14. Once extras/selections are signed, they are considered final. Absolutely no changes or deletions will be accepted regardless of when selections are finalized or the stage of construction.

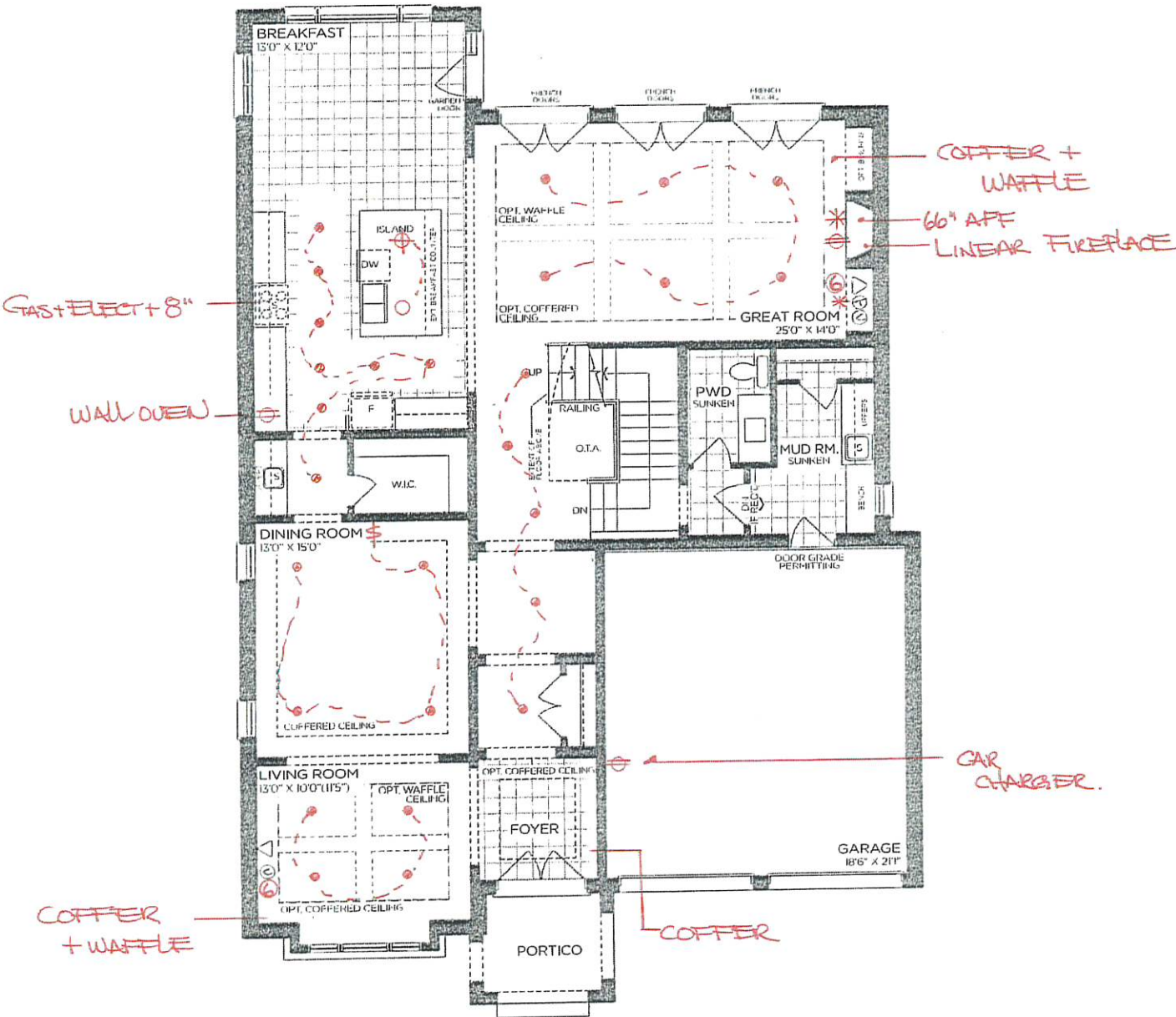
SCHEDULE 'F'



PJ2-55
June 21 2023

The
Oakgrove
EAGLE'S RIDGE COLLECTION

Elevation A - 4,021 sq.ft.
Plus 102 sq.ft. Fin. Basement Foyer
Elevation B - 4,004 sq.ft.
Plus 102 sq.ft. Fin. Basement Foyer
— Elevation C - 4,013 sq.ft.
Plus 102 sq.ft. Fin. Basement Foyer



GROUND FLOOR | ELEV. A

VENDOR

PURCHASER

PURCHASER

GOLD PARK
WORTH MORE™

Prices, figures, illustrations, sizes, features and finishes are subject to change without notice. Areas and dimensions are approximate and actual usable floor space may vary from the stated area. Layout may be reverse of the unit purchased. E. & O.E. 5003

SCHEDULE 'F'

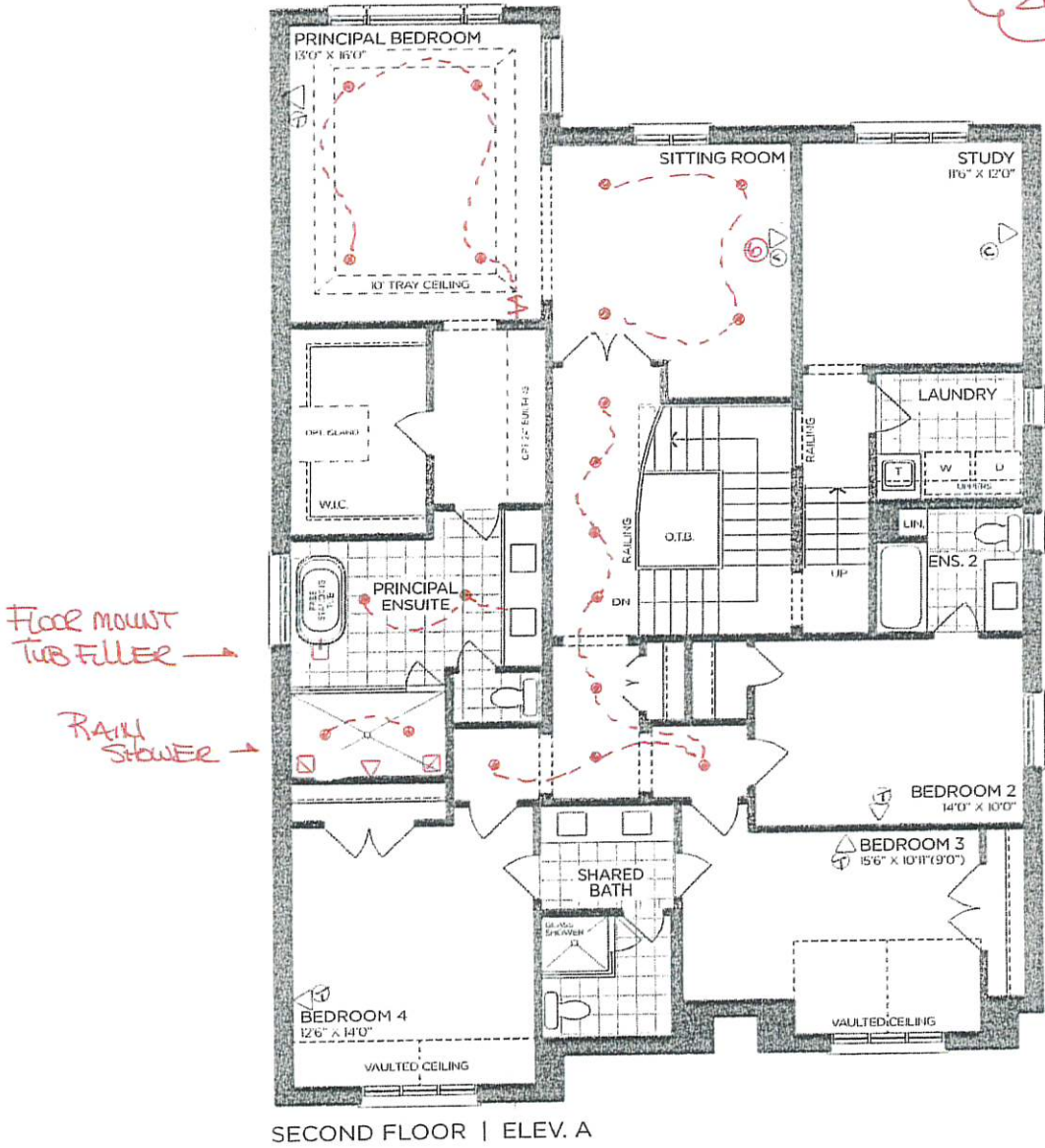


PV2-55
JUNE 21 2023

The
Oakgrove
EAGLE'S RIDGE COLLECTION

Elevation A - 4,021 sq.ft.
Plus 102 sq.ft. Fin. Basement Foyer
Elevation B - 4,004 sq.ft.
Plus 102 sq.ft. Fin. Basement Foyer
Elevation C - 4,013 sq.ft.
Plus 102 sq.ft. Fin. Basement Foyer

8' doors
THRU OUT
2nd FLOOR



VENDOR

PURCHASER

PURCHASER

GOLD PARK
WORTH MORE™

Prices, figures, illustrations, sizes, features and finishes are subject to change without notice. Areas and dimensions are approximate and actual usable floor space may vary from the stated area. Layout may be reverse of the unit purchased. E. & O.E. 5003

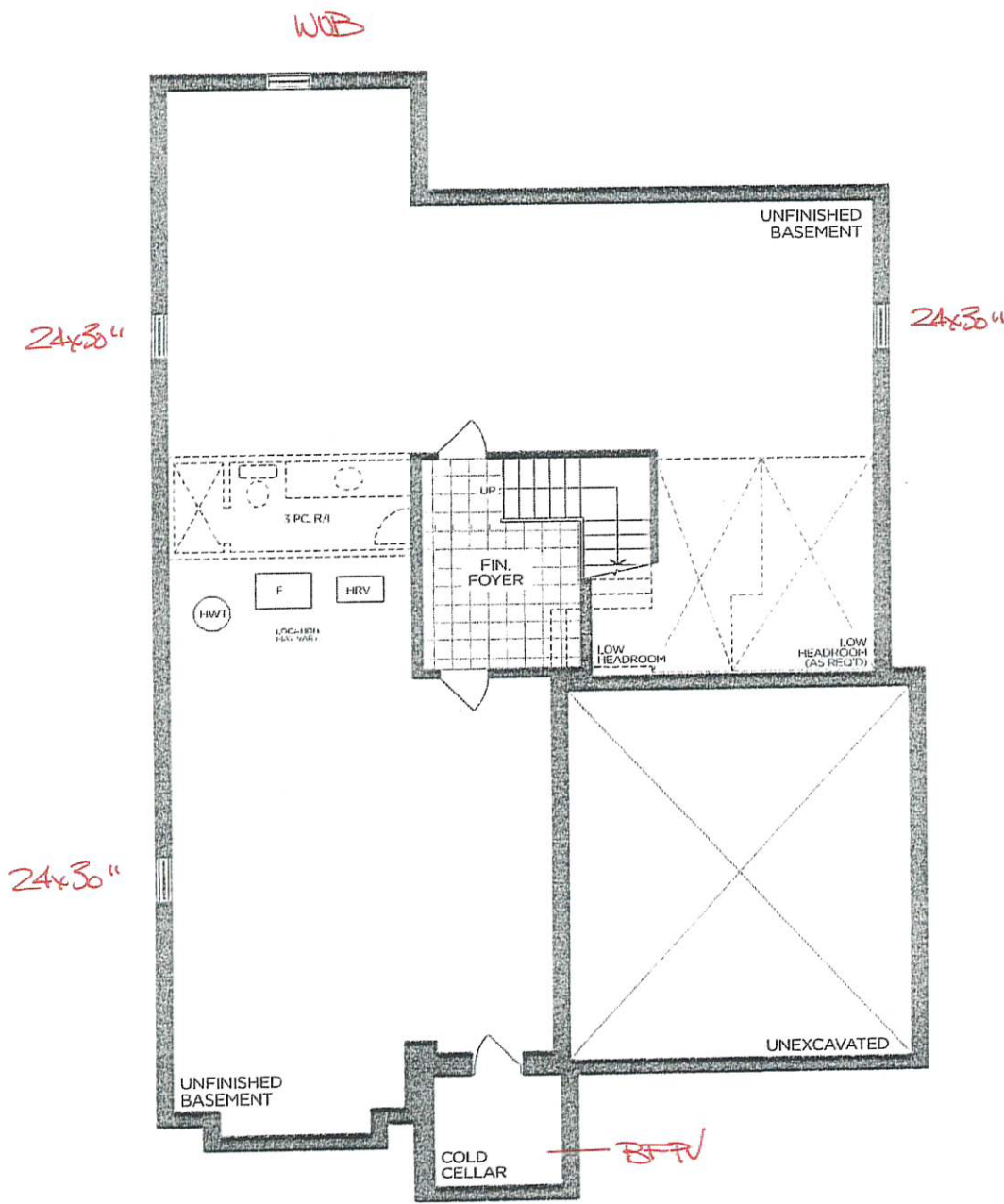
SCHEDULE 'F'



PJ2-55
JUNE 21 2023

The
Oakgrove
EAGLE'S RIDGE COLLECTION

Elevation A - 4,021 sq.ft.
Plus 102 sq.ft. Fin. Basement Foyer
Elevation B - 4,004 sq.ft.
Plus 102 sq.ft. Fin. Basement Foyer
Elevation C - 4,013 sq.ft.
Plus 102 sq.ft. Fin. Basement Foyer



BASEMENT | ELEV. A

VENDOR

PURCHASER

PURCHASER



Prices, figures, illustrations, sizes, features and finishes are subject to change without notice. Areas and dimensions are approximate and actual usable floor space may vary from the stated area. Layout may be reverse of the unit purchased. E. & O.E. 5003

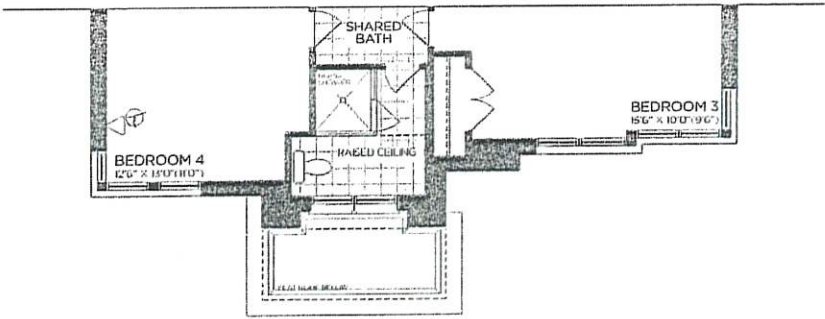
SCHEDULE 'F'



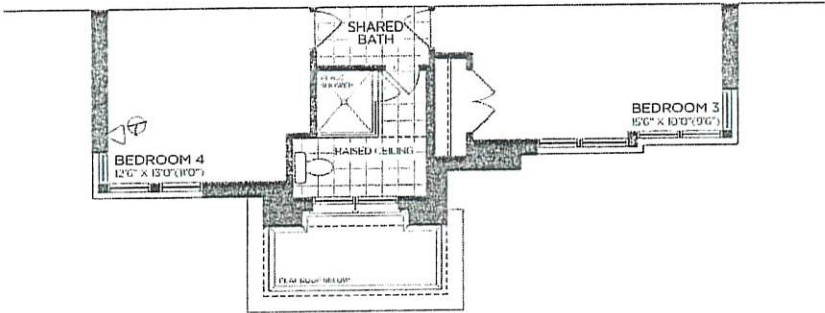
PV2-55
June 21 2023

The
Oakgrove
EAGLE'S RIDGE COLLECTION

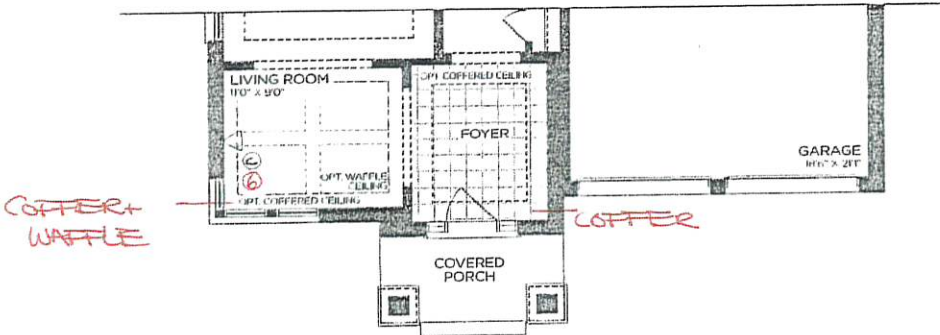
Elevation A - 4,021 sq.ft.
Plus 102 sq.ft. Fin. Basement Foyer
Elevation B - 4,004 sq.ft.
Plus 102 sq.ft. Fin. Basement Foyer
— Elevation C - 4,013 sq.ft.
Plus 102 sq.ft. Fin. Basement Foyer



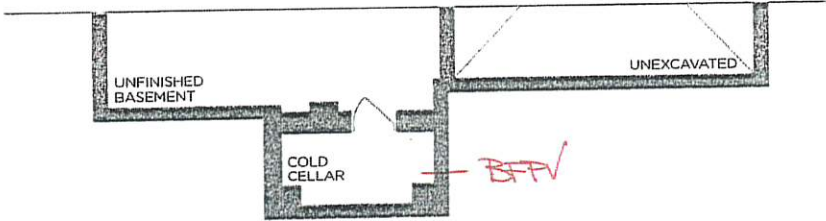
PART. OPT. SECOND FLOOR | ELEV. C
5 BEDROOM



PART. SECOND FLOOR | ELEV. C



PART. GROUND FLOOR | ELEV. C



PART. BASEMENT | ELEV. C

VENDOR

PURCHASER

PURCHASER

GOLD PARK
WORTH MORE™

Prices, figures, illustrations, sizes, features and finishes are subject to change without notice. Areas and dimensions are approximate and actual usable floor space may vary from the stated area. Layout may be reverse of the unit purchased. E. & O.E. 5003



PINE VALLEY
FOREVERGREEN

PLUMBING UPGRADES

ALIGN



- Brushed Gold☐
- Brushed Nickel☐
- Chrome☐
- Matte Black☒ x2

Date: JUNE 21 2023	Lot: 55
Location: PRINCIPAL ENSUITE	
Signature:	Signature:

Two Handle 8" Widespread Lav
Model T6193/69000

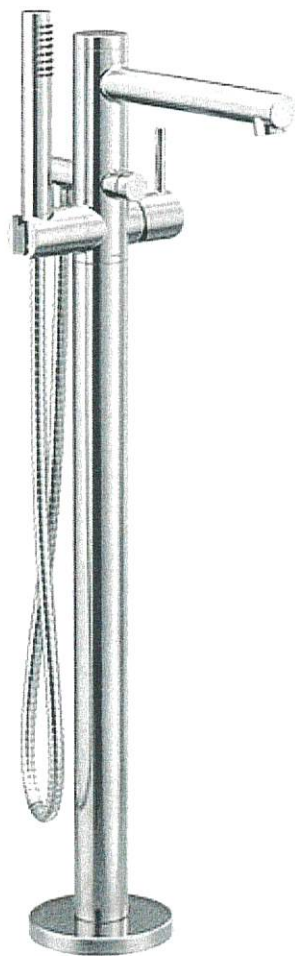
GOLDPARK
WORTH MORE™



PINE VALLEY
FOREVERGREEN

PLUMBING UPGRADES

ALIGN



- Brushed Gold ☐
- Brushed Nickel ☐
- Chrome ☐
- Matte Black ☒

Date: JUNE 21 2023	Lot: 55
Location: PRINCIPAL ENSUITE	
Signature:	Signature:

Freestanding Floor-Mounted Tub Filler
Model 395/TS50100

GOLDPARK
WORTH MORE™



PINE VALLEY
FOREVERGREEN

PLUMBING UPGRADES

ALIGN

Ceiling Mount: 226651 (12" Arm)



Brushed Gold



Brushed Nickel



Chrome



Matte Black



Date:

JUNE 21 2023

Lot:

55

Location:

PRINCIPAL ENSUITE

Signature:

Signature:

**Shower with 3-Function Transfer Valve/Trim
and Slide Bar with Hand Shower + 7" Rain
Showerhead From Ceiling on 12" Arm**

(includes plumbing provision for ceiling mount showerhead)
Model T2192EP/UT4191/3887EP/226651/S176/U361CI/
62320/A725

GOLD PARK
WORTH MORE™