

Spec Lot Addendum(s)

Project: Pine Valley Forevergreen - Ph 2, Model: 5009(B) - ASPEN, Lot: 0052
14, Nick Deluca Court, Vaughan, ONTARIO

Addendum 03/[03] | STRUCTURAL

STRUCTURAL EXTRA'S

Principal Bedroom		
Category	Attribute	Opt. Quantity
ELECTRICAL		6.00
Opt. Description		
S/I 4" E/S LED INTERIOR POT LIGHT - EACH. WHITE		
Notes		
SEE PLAN FOR LOCATION		
ELECTRICAL SWITCHES		1.00
Opt. Description		
S/I ADDITIONAL INTERIOR SWITCH. SINGLE POLE		
Notes		
FOR POTLIGHTS		
Breakfast Room		
Category	Attribute	Opt. Quantity
ELECTRICAL		4.00
Opt. Description		
S/I 4" E/S LED INTERIOR POT LIGHT - EACH. WHITE		
Notes		
IN LIEU OF STANDARD, USE STANDARD SWITCH. SEE PLAN FOR LOCATION		
FRAMING		1.00
Opt. Description		
S/I COFFERED CEILING (OPTIONAL PER ROOM)		
Notes		
WAFFLE CEILING		1.00
Opt. Description		
WAFFLE CEILING , BEAM DETAIL AS PER PLAN (4 BOXES) OPTION # 1 CTRB07		
Notes		
EXT, WINDOWS AND DOORS		1.00
Opt. Description		
INCREASE EXSITING REAR GARDEN DOOR OR FRENCH GARDEN DOOR HEIGHT TO APPROX. 96" - TRANSOM MAY BE REQUIRED		
Notes		
INCREASE HEIGHT OF *SLIDING PATIO DOORS*, AS PER PLAN		
Principal Ensuite		
Category	Attribute	Opt. Quantity
ELECTRICAL OUTLETS		1.00
Opt. Description		
Capped Ceiling Outlet		
Notes		
LOCATE APPROX CENTERED ABOVE TUB		
ELECTRICAL SWITCHES		1.00

Spec Lot Addendum(s)

Project: Pine Valley Forevergreen - Ph 2, Model: 5009(B) - ASPEN, Lot: 0052
14, Nick Deluca Court, Vaughan, ONTARIO

Category	Attribute	Opt. Quantity
Opt. Description		
S/I ADDITIONAL INTERIOR SWITCH. SINGLE POLE		
Notes		
FOR CEILING LIGHT		
FRAMING		1.00
Opt. Description		
S/I RECESSED SHOWER NICHE [SHAMPOO SHELF]. COMPLETE WITH QUARTZ ON 4 SIDES, APPROX. 12 X 18 INSTALLED VERTICALLY. BASED ON STANDARD FINISHES.		
Notes		
FIXTURES		1.00
Opt. Description		
Align 3-Function Rain Shwr/Hand Shwr/S.Bar - BL		
Notes		
FIXTURES		2.00
Opt. Description		
Align 2-Handle Widespread Lav - BL		
Notes		
FIXTURES		1.00
Opt. Description		
Align Free Standing Tub Filler - BL		
Notes		
Exterior		
Category	Attribute	Opt. Quantity
ELECTRICAL		1.00
Opt. Description		
Exterior Hanging Pendant Light		
Notes		
FRONT PORTICO, IN LIEU OF STANDARD COACH LIGHT, USE STANDARD SWITCH. SEE PLAN FOR LOCATION		
Great Room		
Category	Attribute	Opt. Quantity
ELECTRICAL		6.00
Opt. Description		
S/I 4" E/S LED INTERIOR POT LIGHT - EACH. WHITE		
Notes		
IN LIEU OF STANDARD, USE STANDARD SWITCH. SEE PLAN FOR LOCATION		
ELECTRICAL OUTLETS		1.00
Opt. Description		
S/I 110V WALL RECEPTACLE (NOT ON SEPARATE CIRCUIT)		
Notes		
LOCATE APPROX 66" A.F.F. ABOVE FIREPLACE FOR FUTURE TV.		
FRAMING		1.00
Opt. Description		
S/I COFFERED CEILING (OPTIONAL PER ROOM)		
Notes		

Spec Lot Addendum(s)

Project: Pine Valley Forevergreen - Ph 2, Model: 5009(B) - ASPEN, Lot: 0052
14, Nick Deluca Court, Vaughan, ONTARIO

Category	Attribute	Opt. Quantity
NETWORK AND WIRING		1.00
Opt. Description		
S/I CONDUIT PIPE FOR WALL MOUNT TV LOCATED APPROX. 66" A.F.F. ABOVE FIREPLACE THROUGH BASEMENT TO CABLE LOCATION. SEE PLAN FOR LOCATION.		
Notes		
WAFFLE CEILING		1.00
Opt. Description		
WAFFLE CEILING, BEAM DETAIL AS PER PLAN (6 BOXES) OPTION # 1 CTRB07		
Notes		
Hall Main Floor		
Category	Attribute	Opt. Quantity
ELECTRICAL		1.00
Opt. Description		
BASE STND - 8 INCLUDED 4" WHITE E/S LED POT LIGHTS with (1) SWITCH. TO BE LOCATED ON MAIN FLOOR IN (1) ROOM ONLY.		
Notes		
SEE PLAN FOR LOCATION, IN LIEU OF STANDARD CEILING LIGHTS		
ELECTRICAL SWITCHES		1.00
Opt. Description		
S/I HINGE SWITCH - EACH INCLUDES 1 LED POTLIGHT (DOOR ACTIVATED)		
Notes		
IN REACH-IN CLOSET, SEE PLAN FOR LOCATION		
Hall 2nd Level		
Category	Attribute	Opt. Quantity
ELECTRICAL SWITCHES		1.00
Opt. Description		
S/I HINGE SWITCH - EACH INCLUDES 1 LED POTLIGHT (DOOR ACTIVATED)		
Notes		
IN REACH-IN CLOSET, SEE PLAN FOR LOCATION		
Kitchen		
Category	Attribute	Opt. Quantity
ELECTRICAL OUTLETS		1.00
Opt. Description		
S/I 110V WALL RECEPTACLE (NOT ON SEPARATE CIRCUIT)		
Notes		
FOR FUTURE COOKTOP, SEE PLAN FOR LOCATION		
ELECTRICAL OUTLETS		1.00
Opt. Description		
S/I 240V (40 AMP) RECEPTACLE ON A SEPARATE CIRCUIT		
Notes		
FOR FUTURE WALL OVEN, SEE PLAN FOR LOCATION		
ELECTRICAL OUTLETS		1.00
Opt. Description		
Capped Ceiling Outlet		
Notes		

Spec Lot Addendum(s)

Project: Pine Valley Forevergreen - Ph 2, Model: 5009(B) - ASPEN, Lot: 0052
14, Nick Deluca Court, Vaughan, ONTARIO

Category	Attribute	Opt. Quantity
LOCATE APPROX CENTERED ABOVE ISLAND, SAME SWITCH AS STANDARD LIGHT. SEE PLAN FOR LOCATION		
ELECTRICAL		9.00
Opt. Description		
S/I 4" E/S LED INTERIOR POT LIGHT - EACH. WHITE		
Notes		
SEE PLAN FOR LOCATION		
ELECTRICAL		2.00
Opt. Description		
RELOCATE KITCHEN APPLIANCE FROM STANDARD LOCATION - APPROX. "NEW" LOCATION AS PER ATTACHED DRAWINGS		
Notes		
RELOCATE FRIDGE AND STOVE, SEE PLAN FOR LOCATION		
ELECTRICAL		1.00
Opt. Description		
RELOCATE STANDARD CEILING MOUNT FIXTURE		
Notes		
RELOCATE TO APPROX CENTERED ABOVE ISLAND, SEE PLAN FOR LOCATION		
ELECTRICAL SWITCHES		1.00
Opt. Description		
S/I ADDITIONAL INTERIOR SWITCH. SINGLE POLE		
Notes		
FOR POTLIGHTS		
GASLINE		1.00
Opt. Description		
GAS LINE ROUGH-IN - MAIN FLOOR FOR APPLIANCE		
Notes		
FOR FUTURE COOKTOP		
Custom Changes		1.00
Opt. Description		
Custom Option		
Notes		
S/I POTFILLER		
ELECTRICAL		1.00
Opt. Description		
Kit/Serv Led Valance Fixture - 50/60" Series only		
Notes		
INCLUDES SERVERY		
Living Room		
Category	Attribute	Opt. Quantity
ELECTRICAL OUTLETS		1.00
Opt. Description		
Capped Ceiling Outlet		
Notes		
ADD CAPPED CEILING OUTLET IN APPROX CENTER OF LIVING ROOM, SEE PLAN FOR LOCATION		
ELECTRICAL		6.00

Spec Lot Addendum(s)

Project: Pine Valley Forevergreen - Ph 2, Model: 5009(B) - ASPEN, Lot: 0052
14, Nick Deluca Court, Vaughan, ONTARIO

Category	Attribute	Opt. Quantity
Opt. Description		
S/I 4" E/S LED INTERIOR POT LIGHT - EACH. WHITE		
Notes		
SEE PLAN FOR LOCATION - LIVING/DINING		
ELECTRICAL SWITCHES		1.00
Opt. Description		
S/I DIMMER SWITCH: DECORA DIMMER SWITCH - EACH		
Notes		
FOR POTLIGHTS		
ELECTRICAL SWITCHES		1.00
Opt. Description		
S/I ADDITIONAL INTERIOR SWITCH. SINGLE POLE		
Notes		
FOR CEILING LIGHT		
Mud Room		
Category	Attribute	Opt. Quantity
ELECTRICAL SWITCHES		1.00
Opt. Description		
S/I HINGE SWITCH - EACH INCLUDES 1 LED POTLIGHT (DOOR ACTIVATED)		
Notes		
IN REACH-IN CLOSET, SEE PLAN FOR LOCATION		
Whole House		
Category	Attribute	Opt. Quantity
INTERIOR DOORS AND TRIM		19.00
Opt. Description		
S/I 8FT HIGH DOOR THROUGHOUT SECOND FLOOR IN LIEU OF STANDARD HEIGHT DOOR. PRICE IS PER DOOR		
Notes		
THRU OUT 2ND FLOOR		

Spec Lot Addendum(s)

Project: Pine Valley Forevergreen - Ph 2, Model: 5009(B) - ASPEN, Lot: 0052
14, Nick Deluca Court, Vaughan, ONTARIO

Addendum 02/[02] | PRE-STRUCTURAL

STRUCTURAL EXTRA'S

Basement (Unfinished) Area		
Category	Attribute	Opt. Quantity
BASEMENT WINDOWS		5.00
Opt. Description		
S/I BASEMENT WINDOW SIZE 30" X 24" IN LIEU OF STANDARD - 10" WHITE. WINDOW WELLS MAY BE REQUIRED. 50'S & 60'S		
Notes		
CONCRETE AND DRAIN		1.00
Opt. Description		
S/I BACK -FLOW PREVENTER VALVE (BASEMENT)		
Notes		
Hall 2nd Level		
Category	Attribute	Opt. Quantity
EXT, WINDOWS AND DOORS		1.00
Opt. Description		
ADD SKYLIGHT - FIXED (AS PER PLAN)		
Notes		

SCHEDULE 'F'

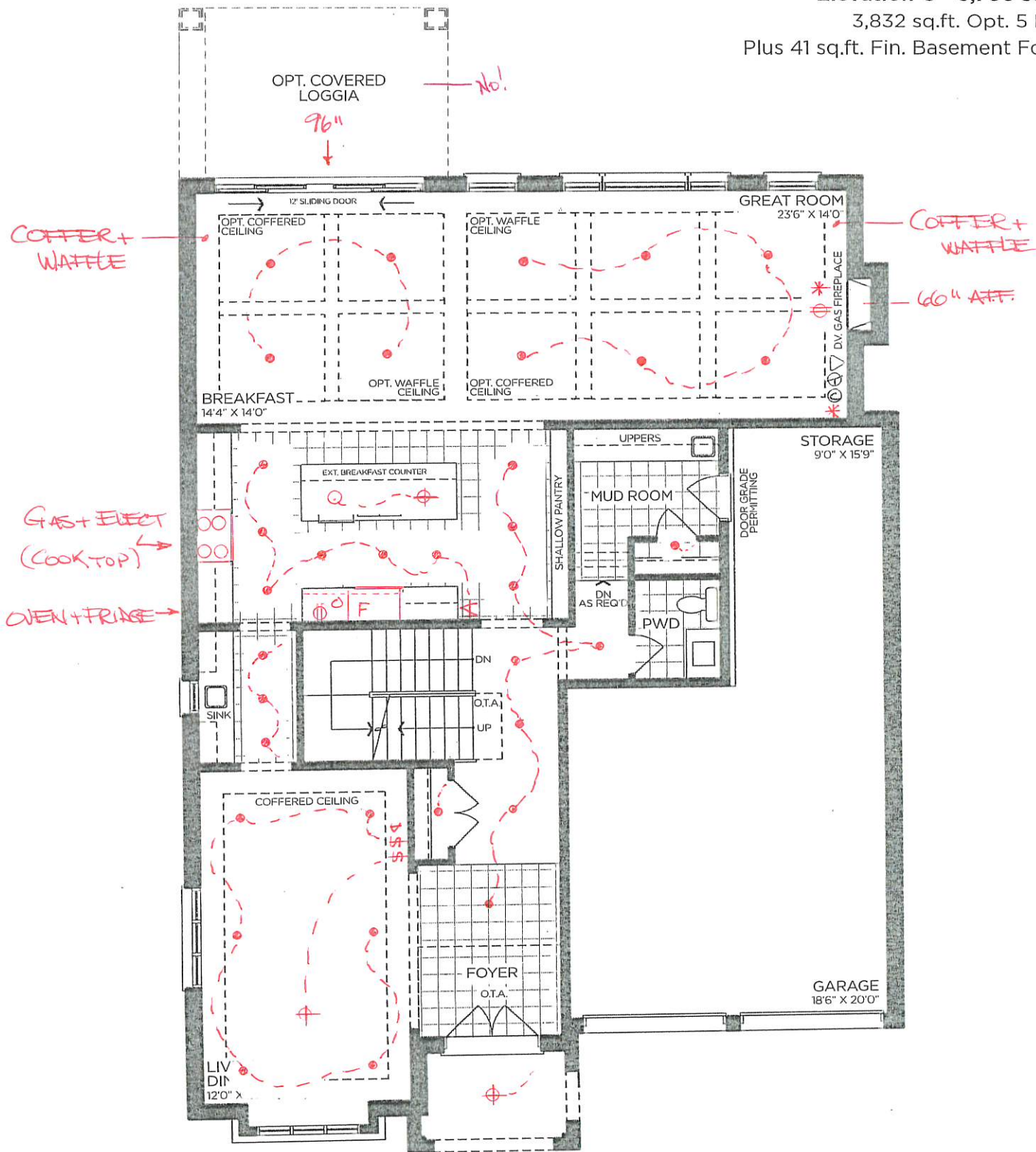


PV2-52
SEPT 15 2022
SEPT 30 2022

The Aspen

EAGLE'S RIDGE COLLECTION

Elevation A - 3,795 sq.ft.
3,841 sq.ft. Opt. 5 Bed
Plus 41 sq.ft. Fin. Basement Foyer
→ Elevation B - 3,768 sq.ft.
3,813 sq.ft. Opt. 5 Bed
Plus 41 sq.ft. Fin. Basement Foyer
Elevation C - 3,786 sq.ft.
3,832 sq.ft. Opt. 5 Bed
Plus 41 sq.ft. Fin. Basement Foyer



GROUND FLOOR | ELEV. A

VENDOR

PURCHASER

PURCHASER

GOLDPARK
WORTH MORE™

Prices, figures, illustrations, sizes, features and finishes are subject to change without notice. Areas and dimensions are approximate and actual usable floor space may vary from the stated area. Layout may be reverse of the unit purchased. E. & O.E. 5009

SCHEDULE 'F'



PV2-52
SEPT 30 2022

The Aspen
EAGLE'S RIDGE COLLECTION

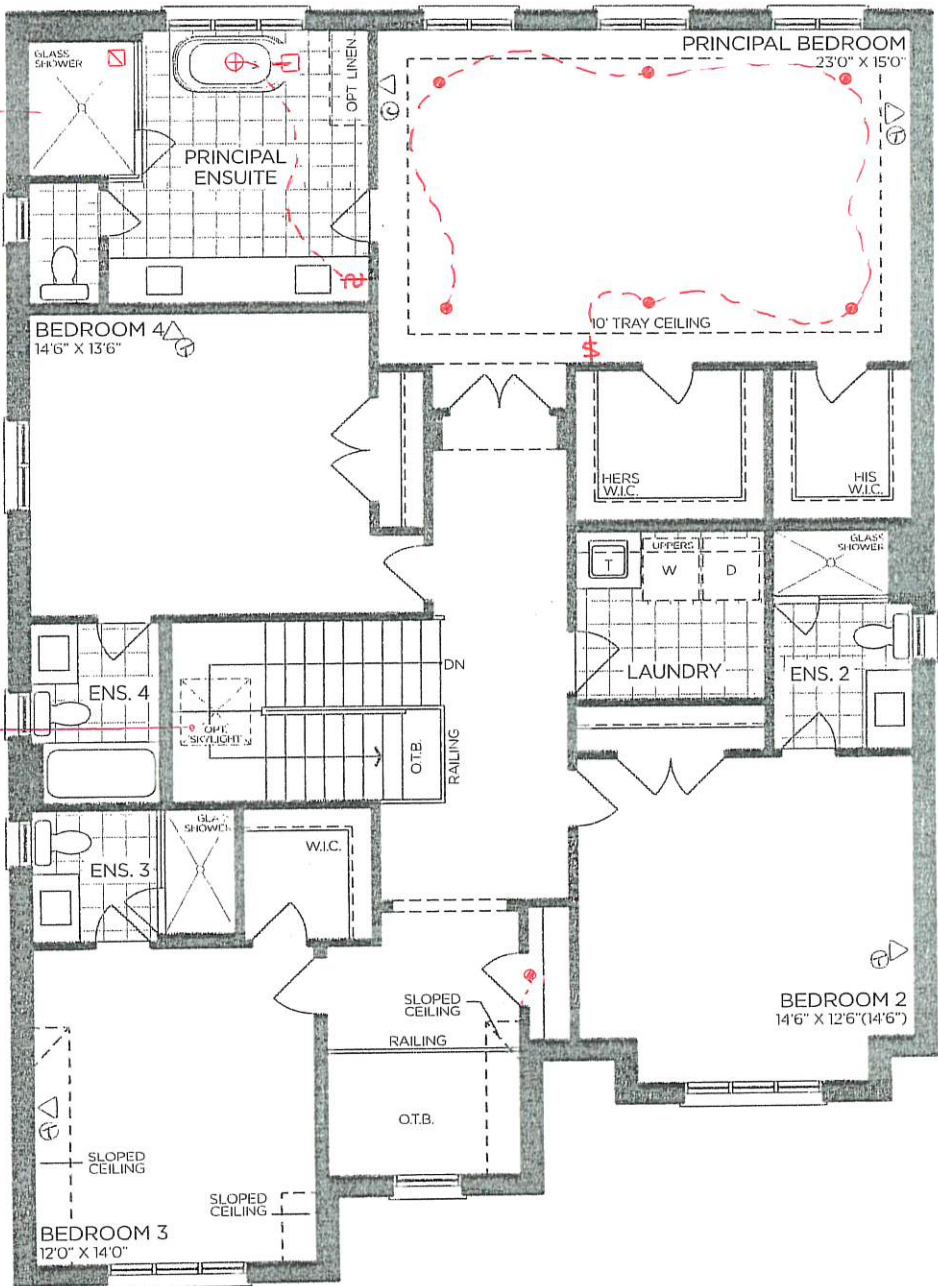
Elevation A - 3,795 sq.ft.
3,841 sq.ft. Opt. 5 Bed
Plus 41 sq.ft. Fin. Basement Foyer
→ Elevation B - 3,768 sq.ft.
3,813 sq.ft. Opt. 5 Bed
Plus 41 sq.ft. Fin. Basement Foyer
Elevation C - 3,786 sq.ft.
3,832 sq.ft. Opt. 5 Bed
Plus 41 sq.ft. Fin. Basement Foyer

8' DOORS
THRU OUT

FLOOR MOUNT
FAUCET

RAIN
SHOWER

SKY LIGHT
YES!



SECOND FLOOR | ELEV. A

VENDOR

PURCHASER

PURCHASER

GOLD PARK
WORTH MORE™

Prices, figures, illustrations, sizes, features and finishes are subject to change without notice. Areas and dimensions are approximate and actual usable floor space may vary from the stated area. Layout may be reverse of the unit purchased. E. & O.E. 5009

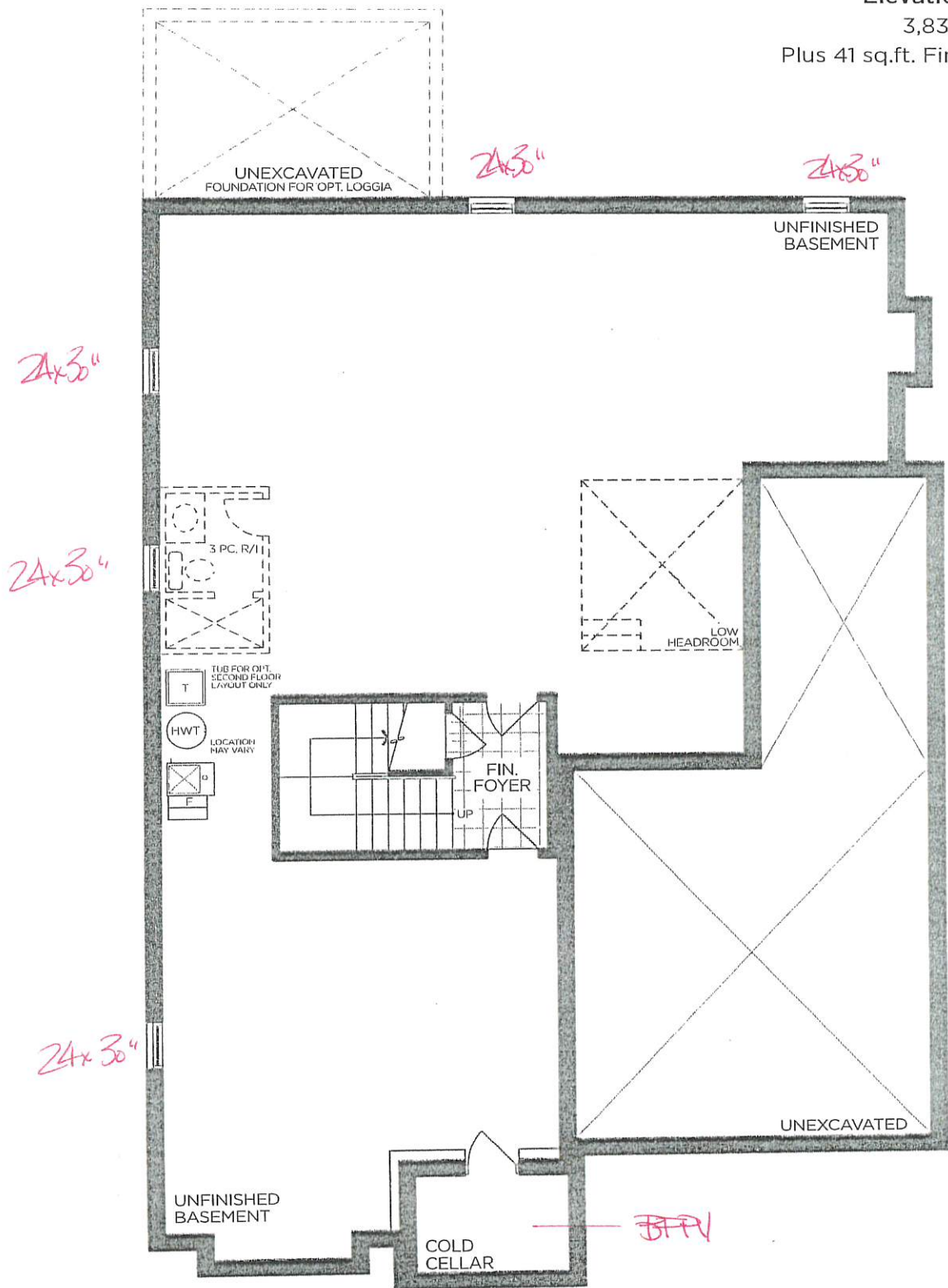
SCHEDULE 'F'



PV2-52
SEPT 15 2022
SEPT 30 2022

The Aspen
EAGLE'S RIDGE COLLECTION

- Elevation A - 3,795 sq.ft.
3,841 sq.ft. Opt. 5 Bed
Plus 41 sq.ft. Fin. Basement Foyer
- Elevation B - 3,768 sq.ft.
3,813 sq.ft. Opt. 5 Bed
Plus 41 sq.ft. Fin. Basement Foyer
- Elevation C - 3,786 sq.ft.
3,832 sq.ft. Opt. 5 Bed
Plus 41 sq.ft. Fin. Basement Foyer



BASEMENT | ELEV. A

VENDOR

PURCHASER

PURCHASER



Prices, figures, illustrations, sizes, features and finishes are subject to change without notice. Areas and dimensions are approximate and actual usable floor space may vary from the stated area. Layout may be reverse of the unit purchased. E. & O.E. 5009

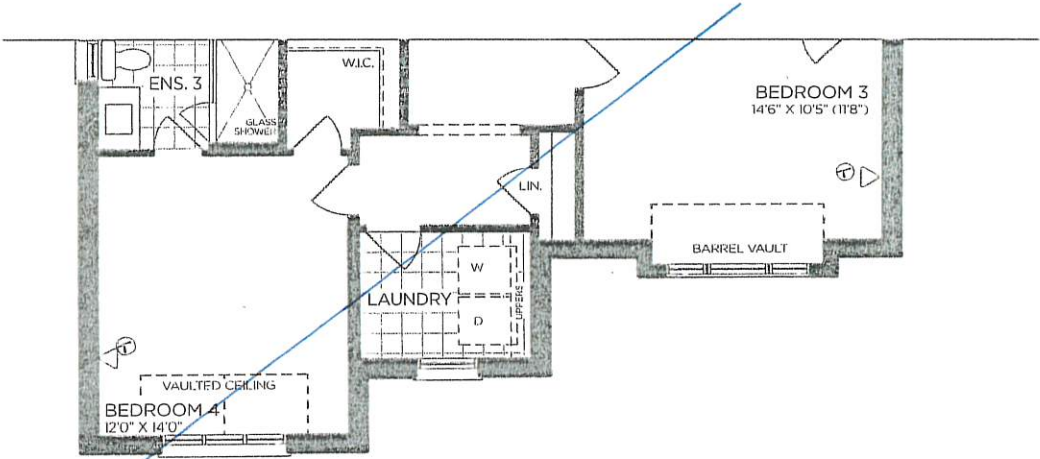
SCHEDULE 'F'



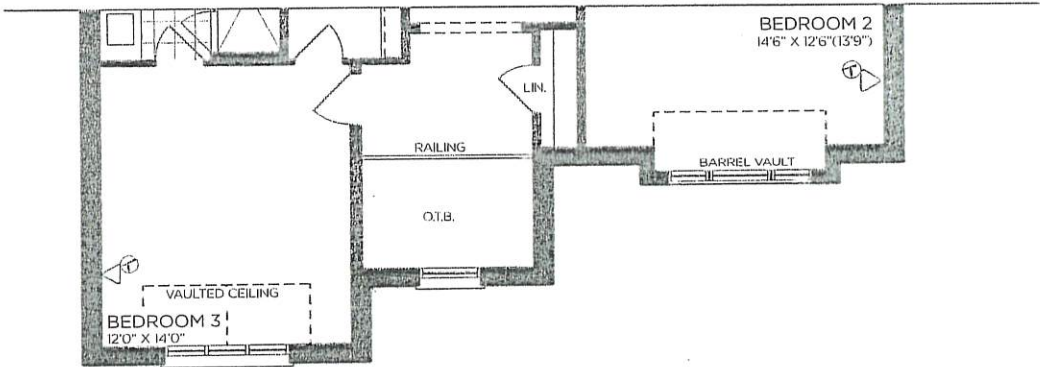
PV2-52
SEPT 15 2022
SEPT 30 2022

The Aspen
EAGLE'S RIDGE COLLECTION

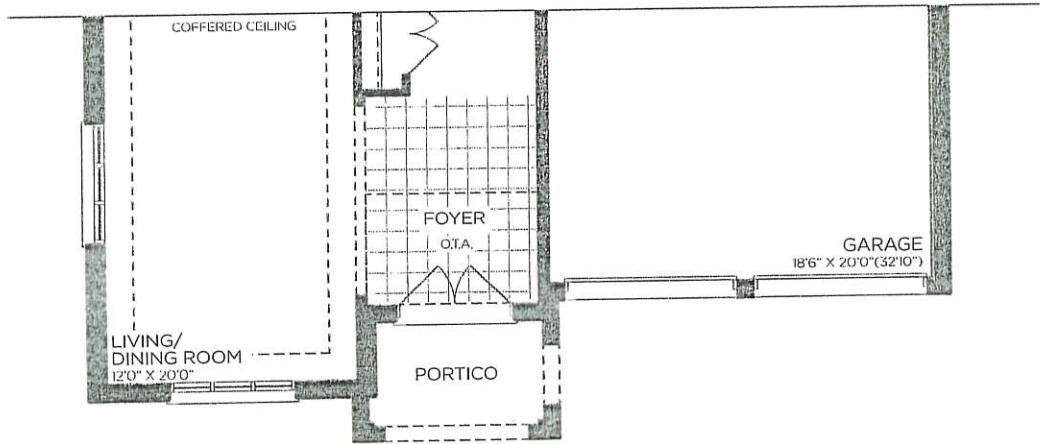
Elevation A - 3,795 sq.ft.
3,841 sq.ft. Opt. 5 Bed
Plus 41 sq.ft. Fin. Basement Foyer
→ Elevation B - 3,768 sq.ft.
3,813 sq.ft. Opt. 5 Bed
Plus 41 sq.ft. Fin. Basement Foyer
Elevation C - 3,786 sq.ft.
3,832 sq.ft. Opt. 5 Bed
Plus 41 sq.ft. Fin. Basement Foyer



PART. SECOND FLOOR
ALT. 5-BEDROOM | ELEV. B



PART. SECOND FLOOR | ELEV. B



PART. GROUND FLOOR | ELEV. B

VENDOR

PURCHASER

PURCHASER

GOLDPARK
WORTH MORE™

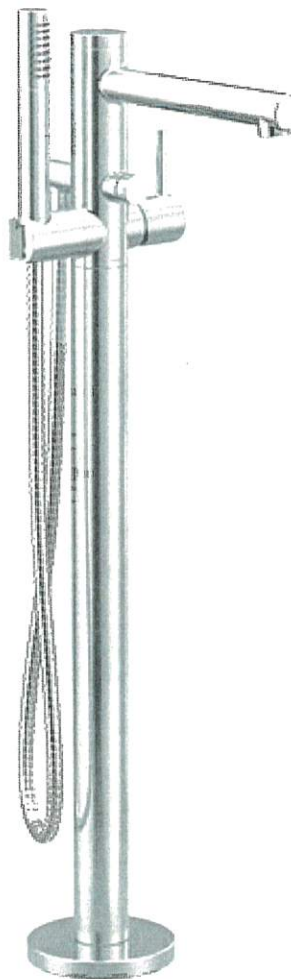
Prices, figures, illustrations, sizes, features and finishes are subject to change without notice. Areas and dimensions are approximate and actual usable floor space may vary from the stated area. Layout may be reverse of the unit purchased. E. & O.E. 5009



PINE VALLEY
FOREVERGREEN

PLUMBING UPGRADES

ALIGN



- Brushed Gold
- Brushed Nickel
- Chrome
- Matte Black
- ☐
- ☐
- ☐
- ☒

Date:	SEPT. 30, 2023	Lot:	PV2-52
Location:			
PRINCIPAL ENSUITE			
Signature:		Signature:	



PINE VALLEY
FOREVERGREEN

PLUMBING UPGRADES

ALIGN

Ceiling Mount: 226651 (12" Arm)



Brushed Gold ☐
Brushed Nickel ☐
Chrome ☐
Matte Black ☒

Date: SEPT. 30, 2000	Lot: PVS-50
Location: PRINCIPAL ENSUITE	
Signature:	Signature:

**Shower with 3-Function Transfer Valve/Trim
and Slide Bar with Hand Shower + 7" Rain
Showerhead From Ceiling on 12" Arm**
(includes plumbing provision for ceiling mount showerhead)
Model T2192EP/UT4191/3887EP/226651/S176/U361CI/
62320/A725

GOLD PARK
WORTH MORE™

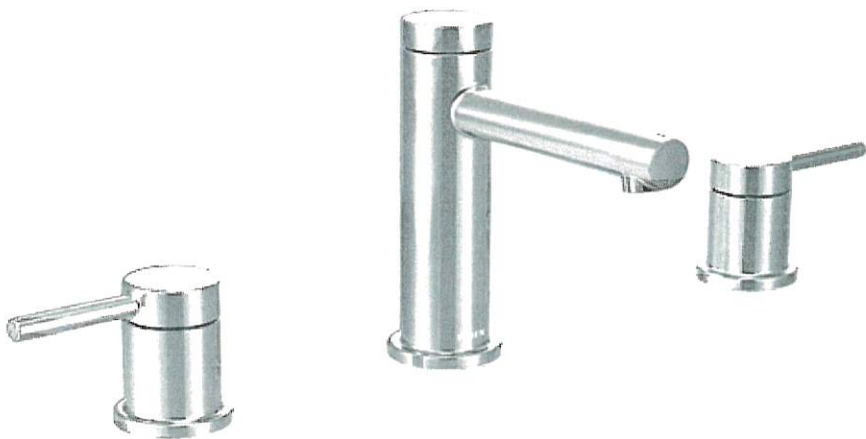


PINE VALLEY

FOREVERGREEN

PLUMBING UPGRADES

ALIGN



- Brushed Gold ☐
- Brushed Nickel ☐
- Chrome ☐
- Matte Black ☒

Date: SEPT. 30 2020	Lot: PVD-52
Location: PRINCIPAL ENSUITE	
Signature:	Signature:

Two Handle 8" Widespread Lav
Model T6193/69000

GOLDPARK
WORTH MORE™



PINE VALLEY

FOREVERGREEN

UPGRADE KITCHEN EXTRA

MOEN - MODERN

Pot Filler



Brushed Gold

Chrome

Matte Black

Spot Resistant Stainless

☐☐☒☐

Date: SEPT. 30, 2022	Lot: PV2-52
Location: KITCHEN	
Signature:	Signature:

Model S665 Chrome / S665BL Matte Black /
S665SRS Spot Resist Stainless / S665BG Brushed Gold

GOLD PARK
WORTH MORE™

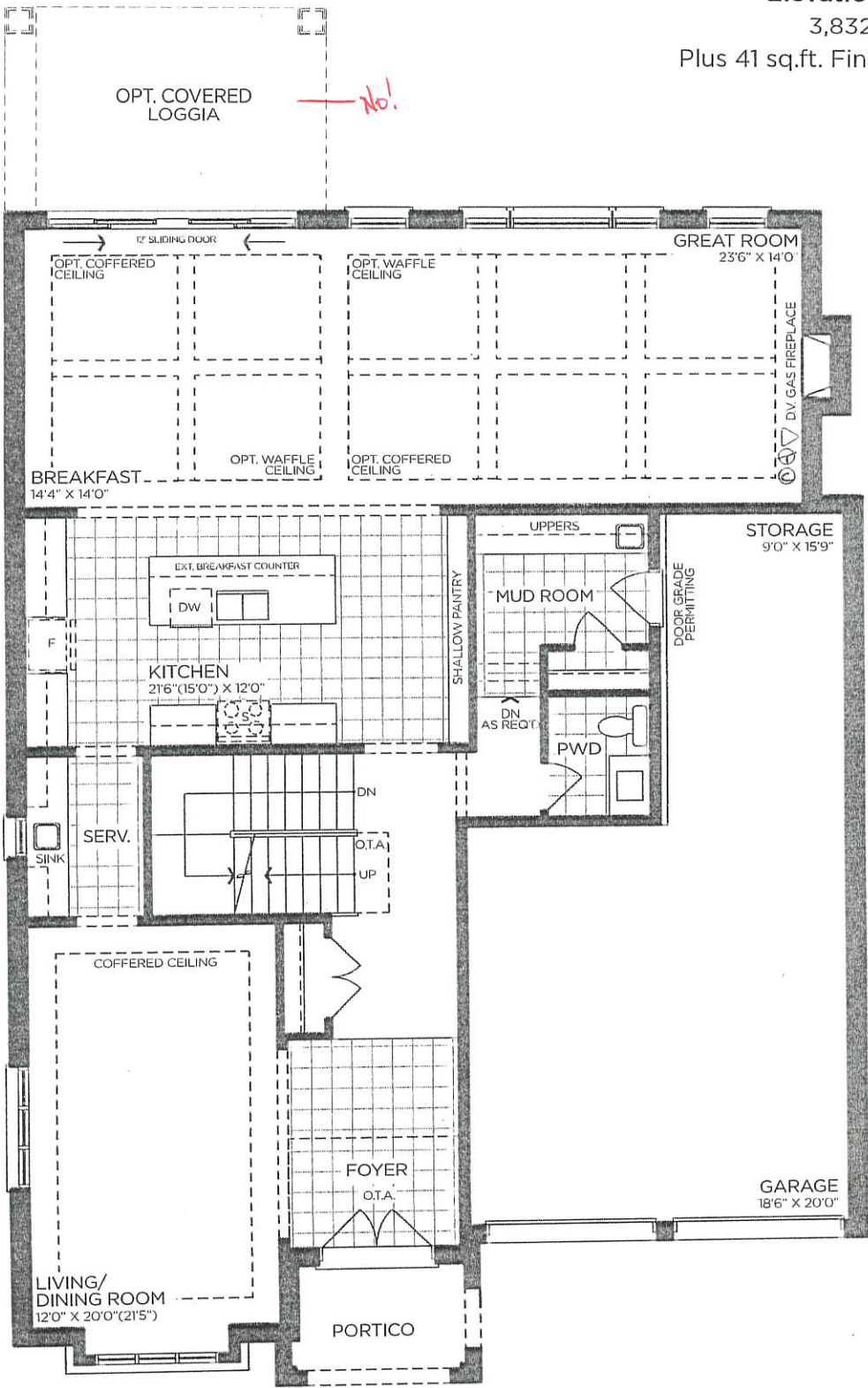
SCHEDULE 'F'



PV2-52
SEPT 15 2022

The Aspen
EAGLE'S RIDGE COLLECTION

Elevation A - 3,795 sq.ft.
3,841 sq.ft. Opt. 5 Bed
Plus 41 sq.ft. Fin. Basement Foyer
→ Elevation B - 3,768 sq.ft.
3,813 sq.ft. Opt. 5 Bed
Plus 41 sq.ft. Fin. Basement Foyer
Elevation C - 3,786 sq.ft.
3,832 sq.ft. Opt. 5 Bed
Plus 41 sq.ft. Fin. Basement Foyer



GROUND FLOOR | ELEV. A

VENDOR

PURCHASER

PURCHASER

GOLDPARK
WORTH MORE™

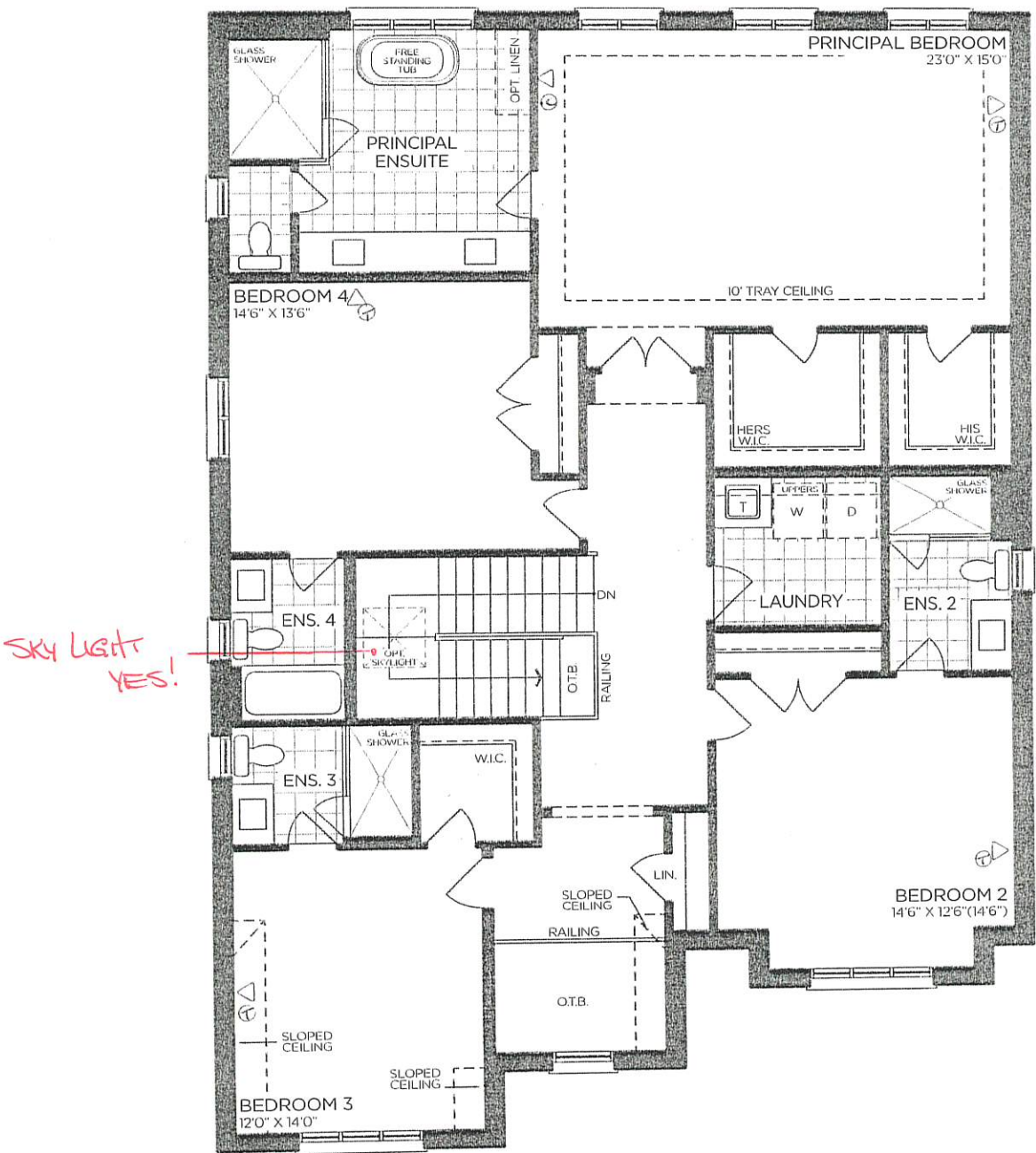
Prices, figures, illustrations, sizes, features and finishes are subject to change without notice. Areas and dimensions are approximate and actual usable floor space may vary from the stated area. Layout may be reverse of the unit purchased. E. & O.E. 5009

SCHEDULE 'F'



The Aspen
EAGLE'S RIDGE COLLECTION

Elevation A - 3,795 sq.ft.
3,841 sq.ft. Opt. 5 Bed
Plus 41 sq.ft. Fin. Basement Foyer
Elevation B - 3,768 sq.ft.
3,813 sq.ft. Opt. 5 Bed
Plus 41 sq.ft. Fin. Basement Foyer
Elevation C - 3,786 sq.ft.
3,832 sq.ft. Opt. 5 Bed
Plus 41 sq.ft. Fin. Basement Foyer



SECOND FLOOR | ELEV. A

VENDOR

PURCHASER

PURCHASER



Prices, figures, illustrations, sizes, features and finishes are subject to change without notice. Areas and dimensions are approximate and actual usable floor space may vary from the stated area. Layout may be reverse of the unit purchased. E. & O.E. 5009

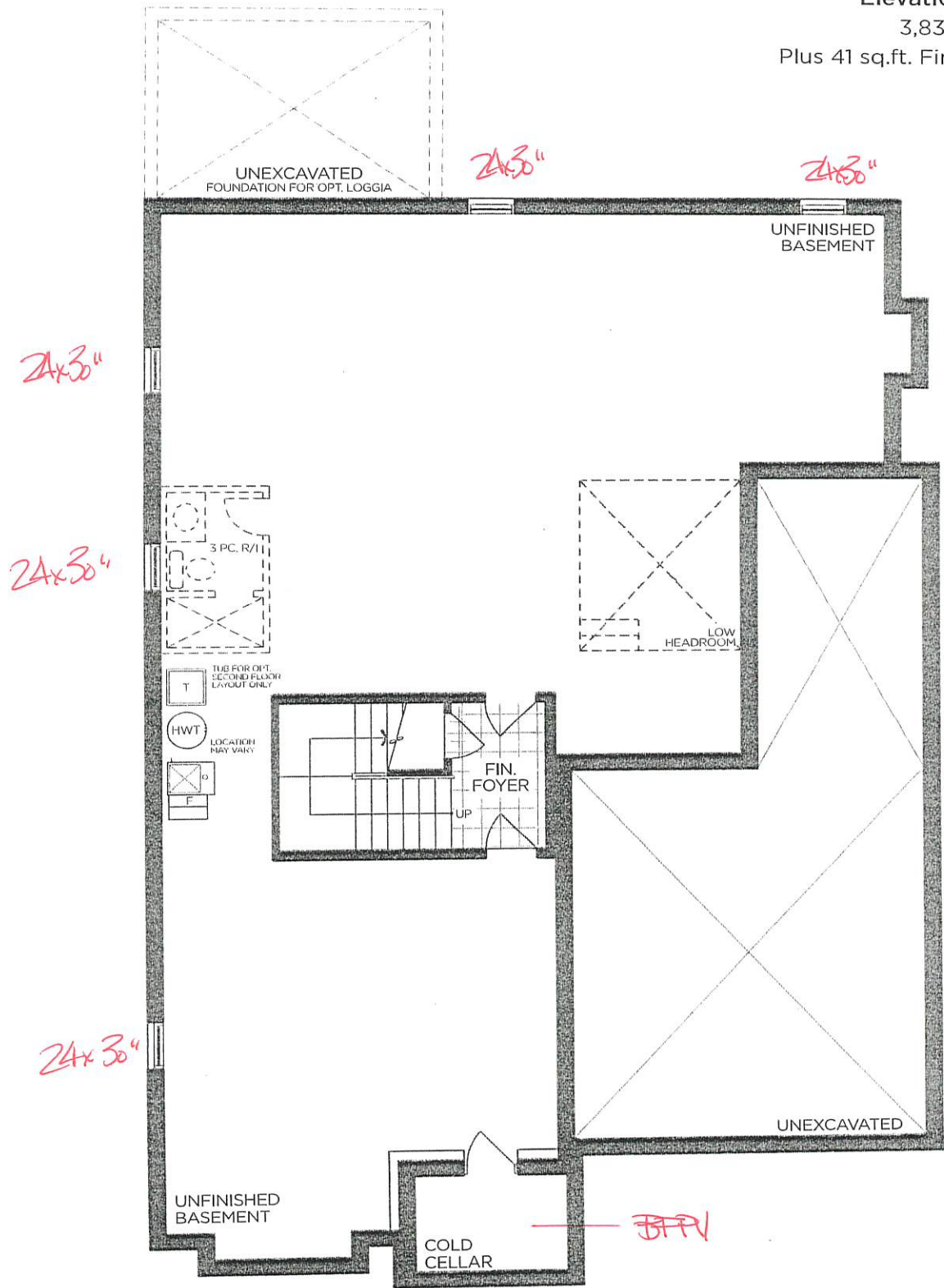
SCHEDULE 'F'



PVZ-52
SEPT 15 2022

The
Aspen
EAGLE'S RIDGE COLLECTION

- Elevation A - 3,795 sq.ft.
3,841 sq.ft. Opt. 5 Bed
Plus 41 sq.ft. Fin. Basement Foyer
→ Elevation B - 3,768 sq.ft.
3,813 sq.ft. Opt. 5 Bed
Plus 41 sq.ft. Fin. Basement Foyer
Elevation C - 3,786 sq.ft.
3,832 sq.ft. Opt. 5 Bed
Plus 41 sq.ft. Fin. Basement Foyer



BASEMENT | ELEV. A

VENDOR

PURCHASER

PURCHASER

GOLD PARK
WORTH MORE™

Prices, figures, illustrations, sizes, features and finishes are subject to change without notice. Areas and dimensions are approximate and actual usable floor space may vary from the stated area. Layout may be reverse of the unit purchased. E. & O.E. 5009

SCHEDULE 'F'

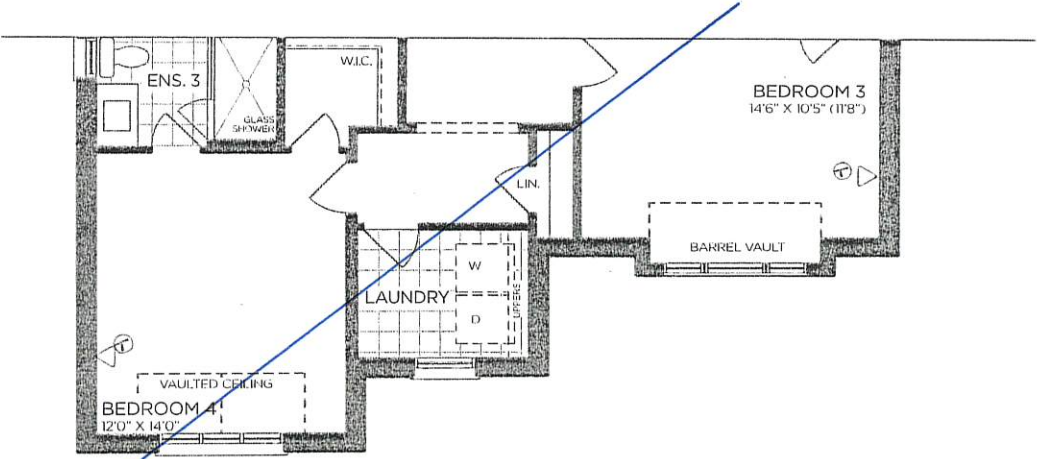


PV2-52
SEPT 15 2022

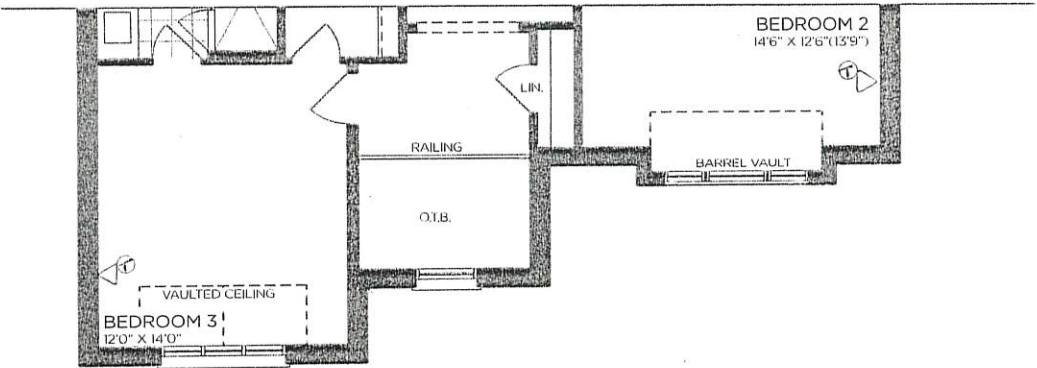
The Aspen

EAGLE'S RIDGE COLLECTION

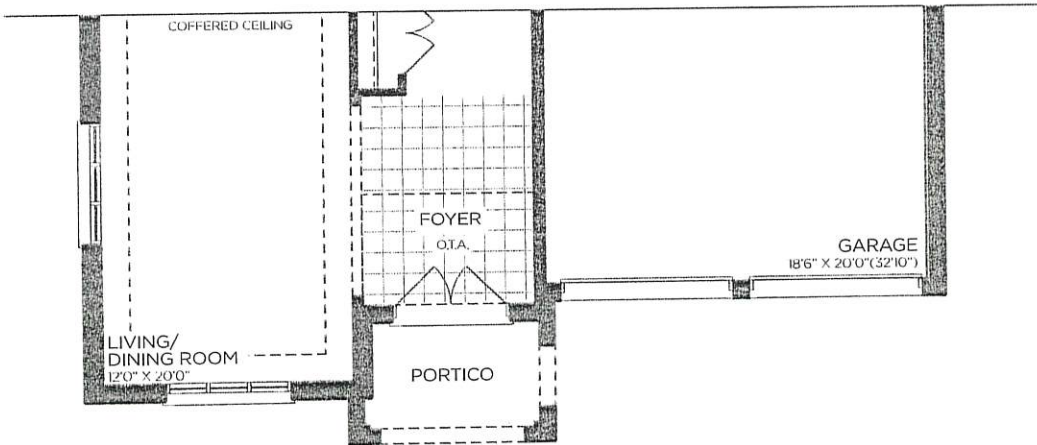
- Elevation A - 3,795 sq.ft.
3,841 sq.ft. Opt. 5 Bed
Plus 41 sq.ft. Fin. Basement Foyer
- ➡ Elevation B - 3,768 sq.ft.
3,813 sq.ft. Opt. 5 Bed
Plus 41 sq.ft. Fin. Basement Foyer
- Elevation C - 3,786 sq.ft.
3,832 sq.ft. Opt. 5 Bed
Plus 41 sq.ft. Fin. Basement Foyer



PART. SECOND FLOOR
ALT. 5-BEDROOM | ELEV. B



PART. SECOND FLOOR | ELEV. B



PART. GROUND FLOOR | ELEV. B

VENDOR

PURCHASER

PURCHASER



Prices, figures, illustrations, sizes, features and finishes are subject to change without notice. Areas and dimensions are approximate and actual usable floor space may vary from the stated area. Layout may be reverse of the unit purchased. E. & O.E. 5009